

MARS/60M MOD FOR IC-756PROII

The usual disclaimers apply! Damage is your responsibility, not that of the author. Rig chassis should be grounded for static protection.

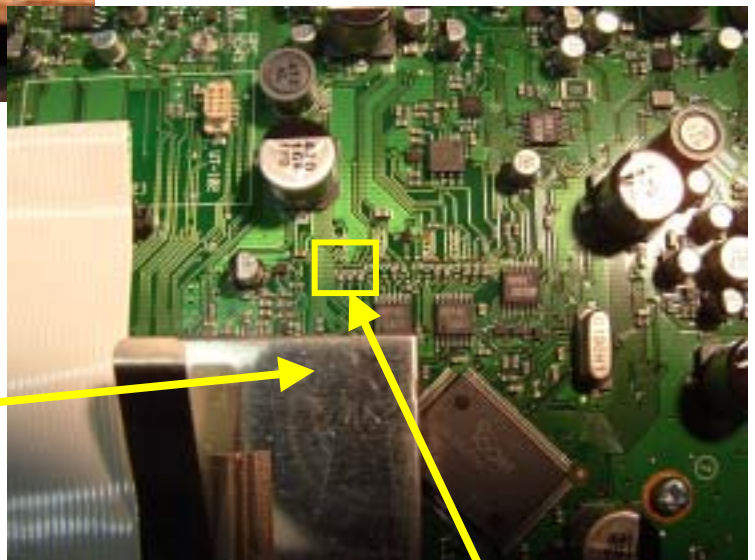
Radio upside down, facing you. Remove bottom cover.

Observe control unit on right side with plug-in DSP unit. Carefully unplug DSP unit and set aside (see orientation picture 1.)

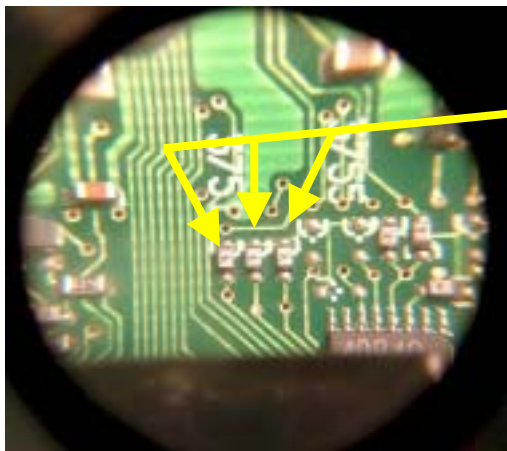


Picture 1. DSP unit.
Unplug and set aside.

After removing the DSP unit, locate the smaller silver-colored shield at the front-left of the control unit. See picture 2. Three SMD diodes to be removed are just to the rear of the shield



Picture 2. Location of
smaller silver shield



SMD diodes (3) to be
removed