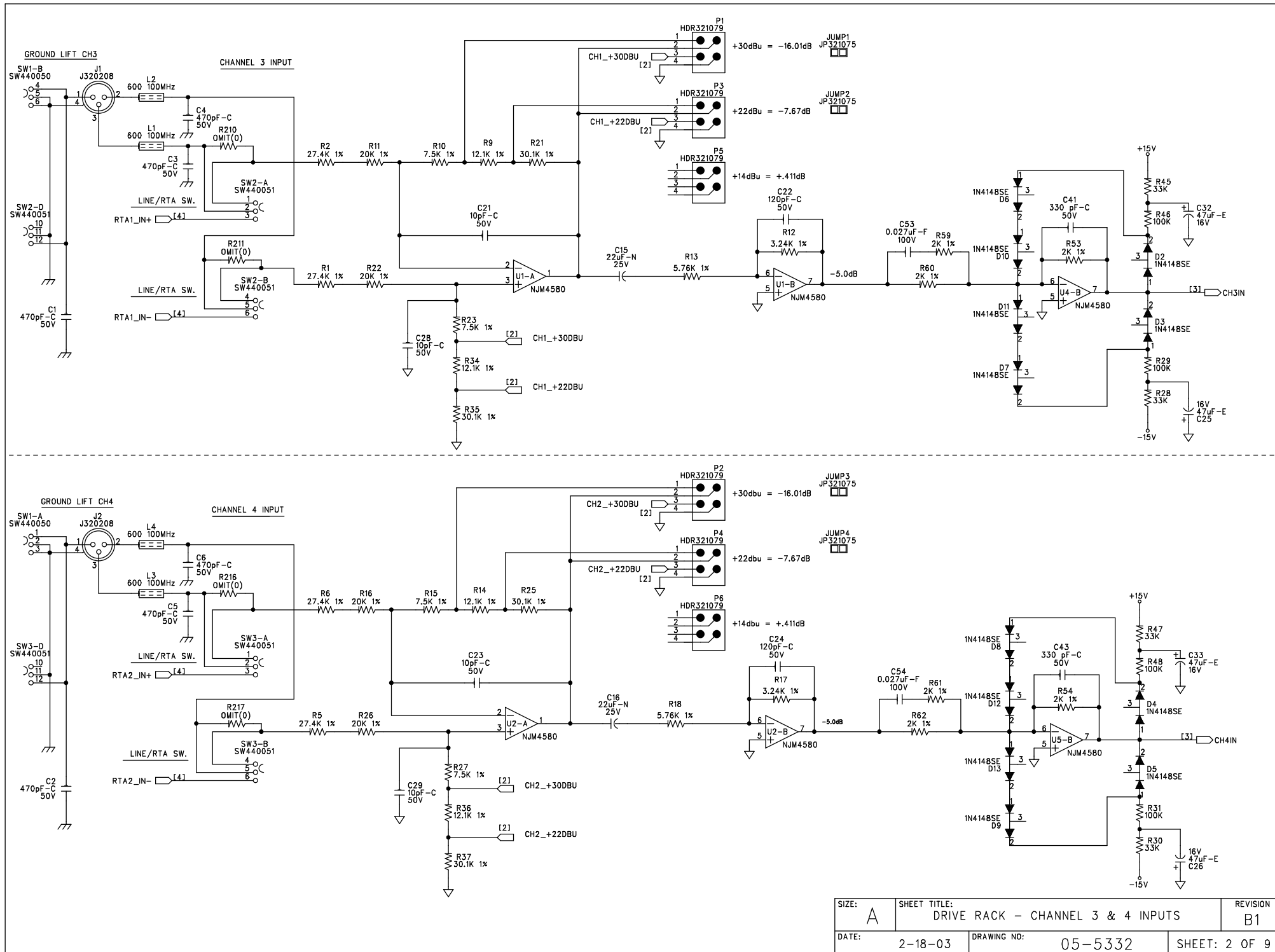
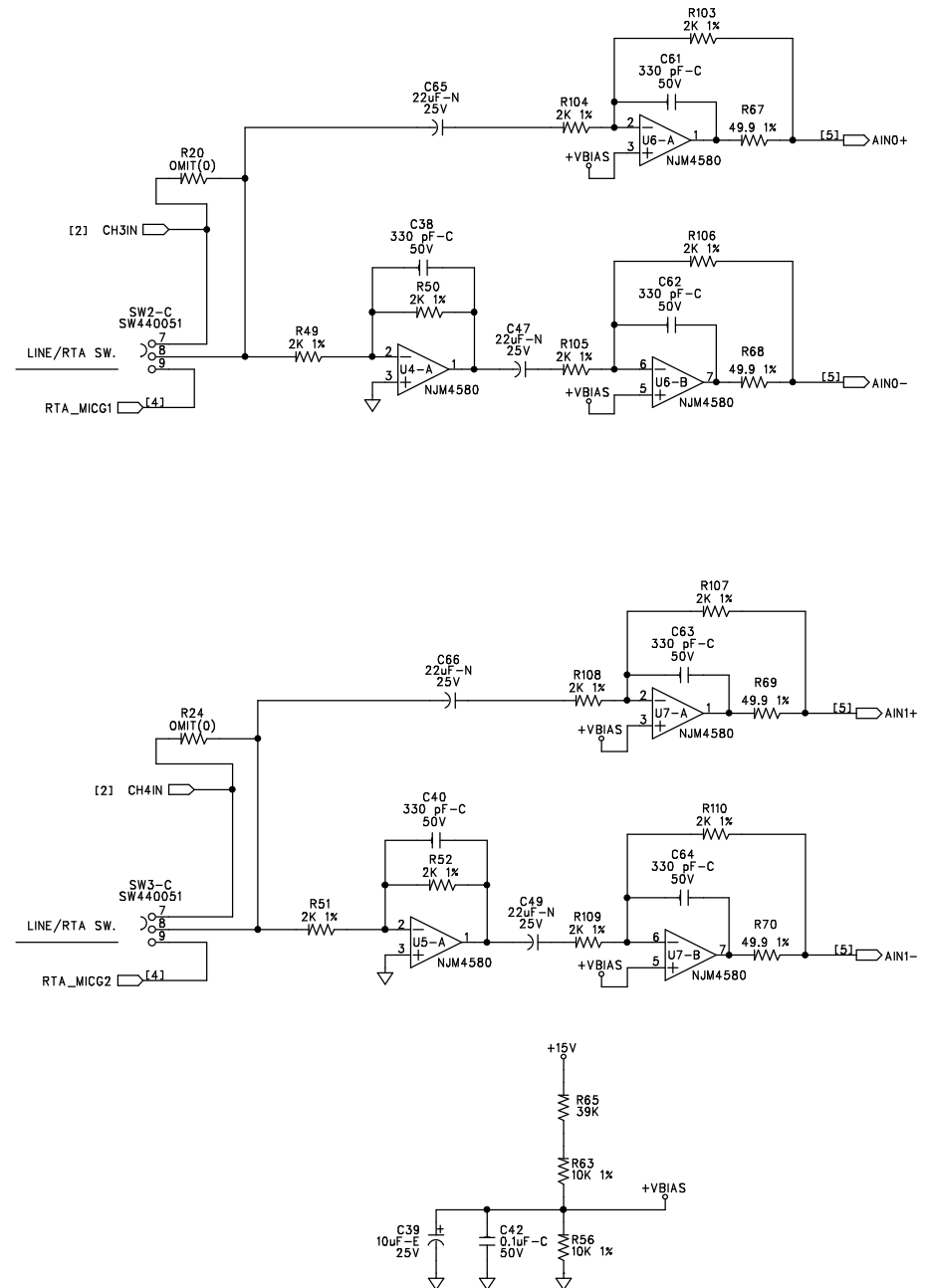


B1	CHANGE R264 TO 100K (50-1504)	2431	MTB	2-18-03
B0	ADDED MFG LABEL, NO REV CHANGE.	2090	MTB	8-6-02
B0	Changed Relays and associated circuitry	1350	MRC	7/21/00
A0	RELEASED TO PRODUCTION	XXXX	MRC	03/21/00
REV	DESCRIPTION	ECN #	INIT	DATE
REVISION HISTORY				
dbx Professional Products 8760 South Sandy Parkway Sandy Utah 84070				
TITLE: dbx Drive Rack CH3&4, RTA Analog PCB				
DESIGNER: DOUG PECTOL		ENGINEER: Don Burdette		
SIZE: A	DRAWING NO: 05-5332			REVISION B1
DATE: 2-18-03	FILENAME: 055332B1.SCH		SHEET: 1 OF 9	

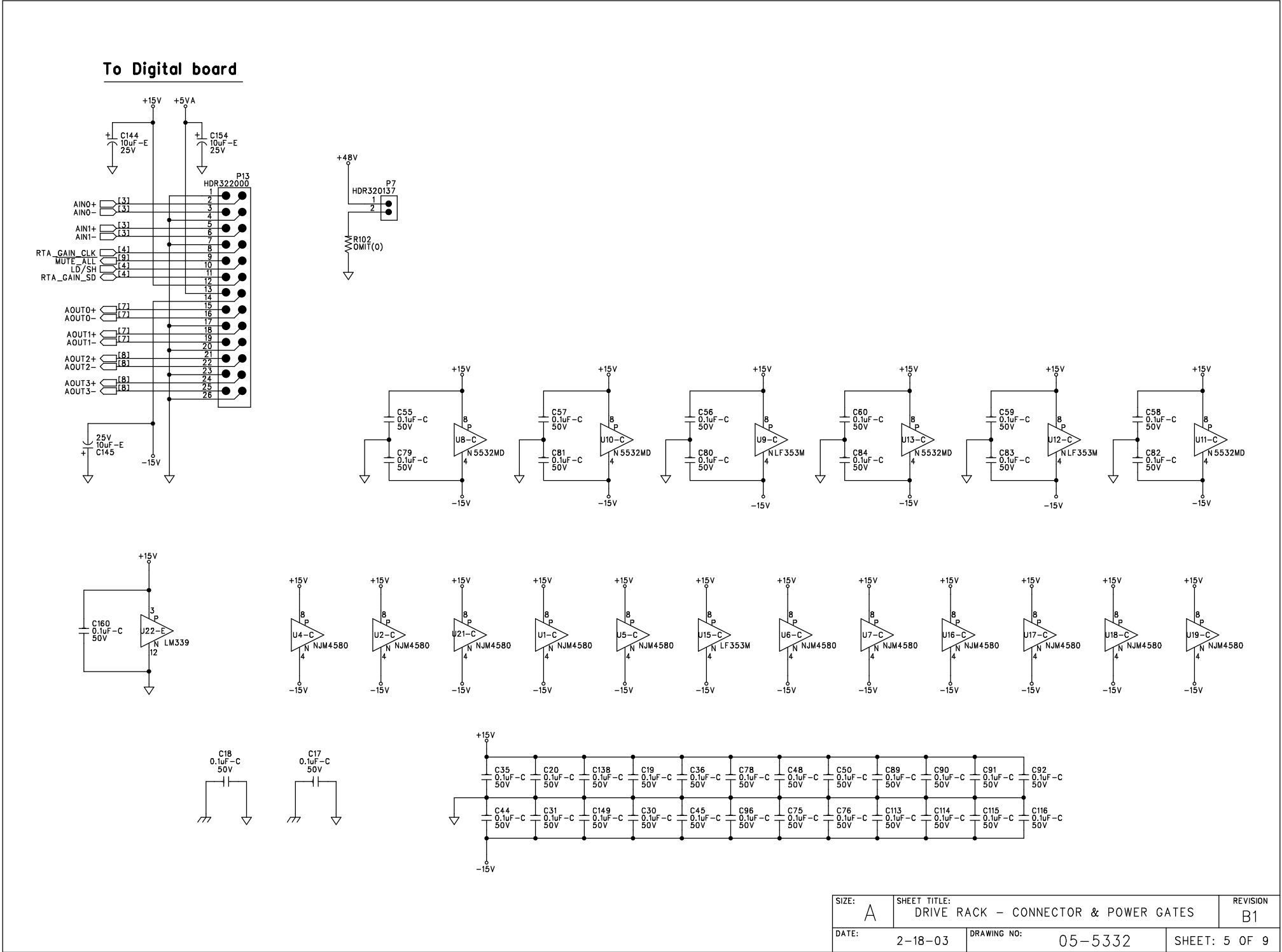


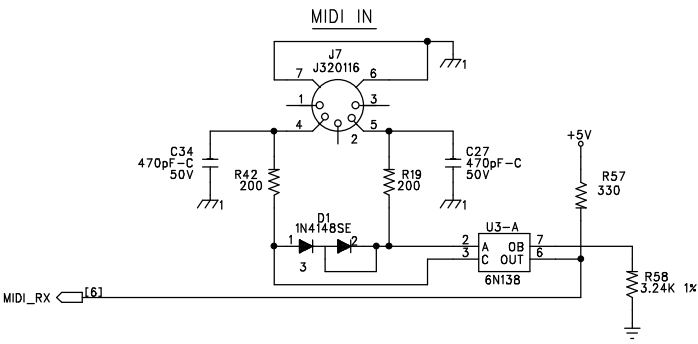
SIZE: A	SHEET TITLE: DRIVE RACK - CHANNEL 3 & 4 INPUTS	REVISION B1
DATE: 2-18-03	DRAWING NO: 05-5332	SHEET: 2 OF 9



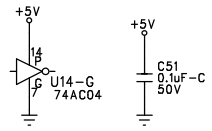
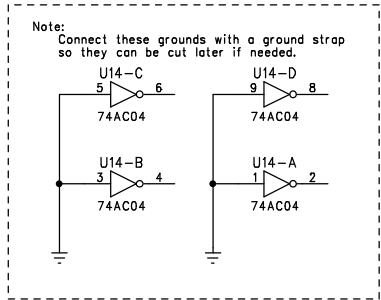
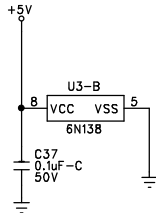
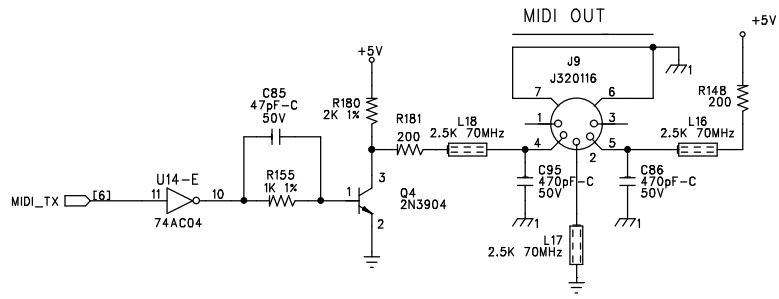
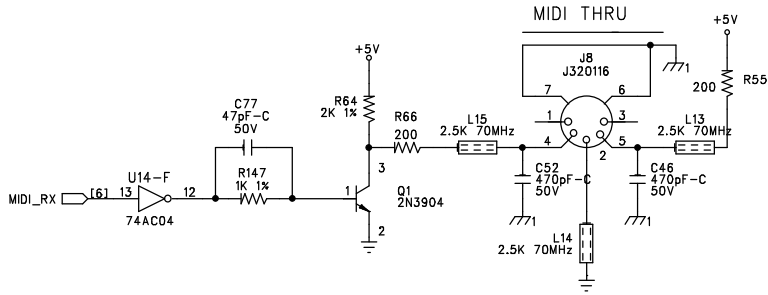
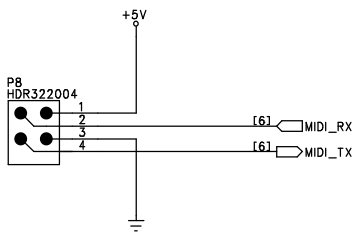
SIZE: A	SHEET TITLE: DRIVE RACK - A/D DRIVE	REVISION B1
DATE: 2-18-03	DRAWING NO: 05-5332	SHEET: 3 OF 9

SIZE: A	SHEET TITLE: DRIVE RACK - RTA INPUT		REVISION: B1
DATE: 2-18-03	DRAWING NO: 05-5332	SHEET: 4 OF 9	



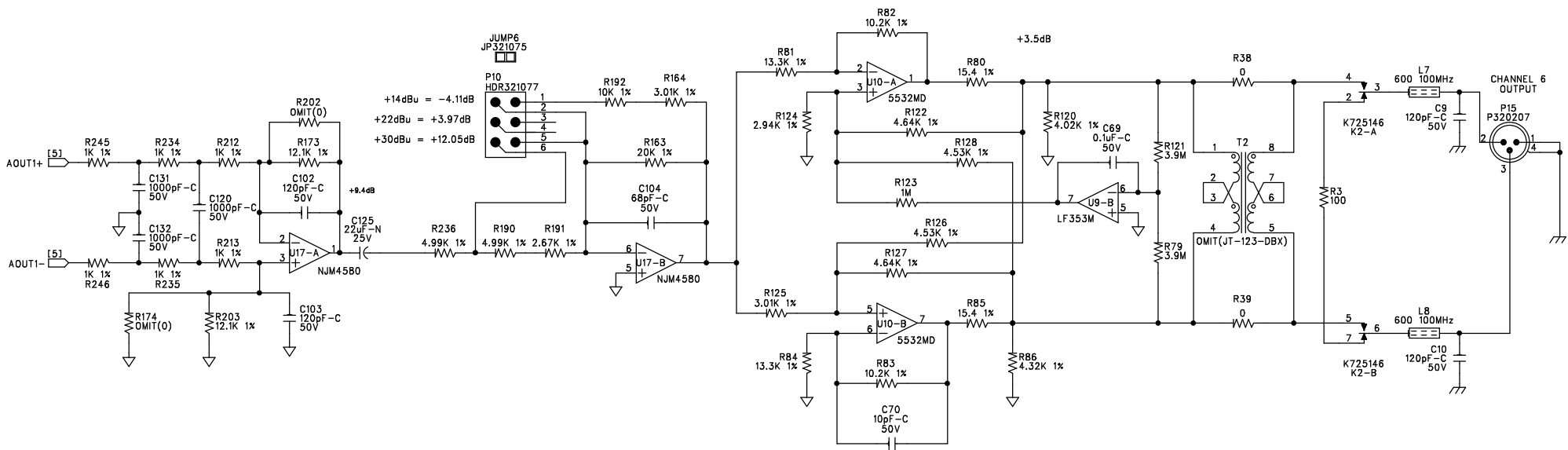
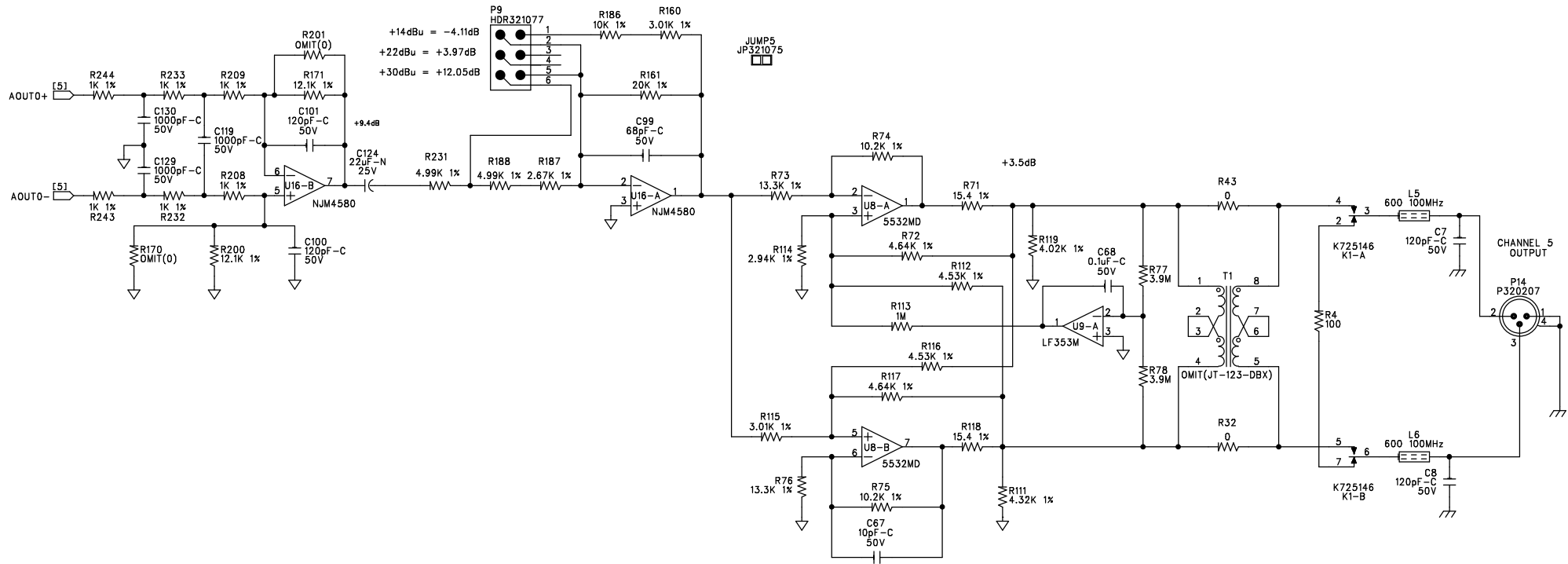


To Digital Board

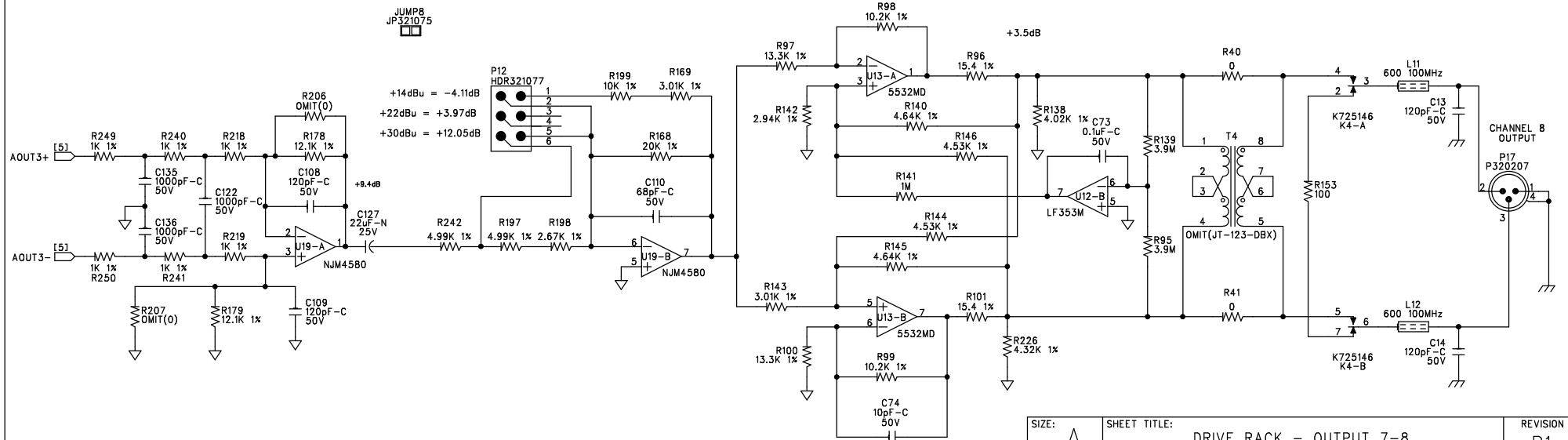
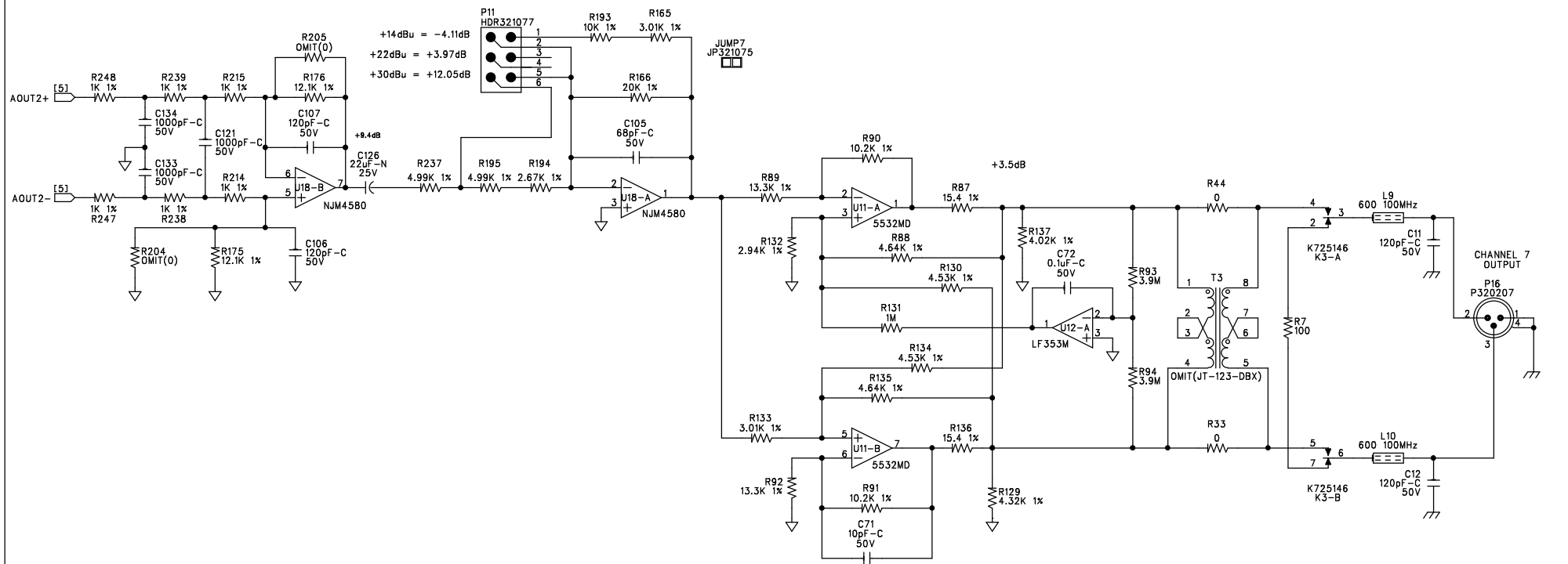


Note:
Connect these grounds with a ground strap
so they can be cut later if needed.

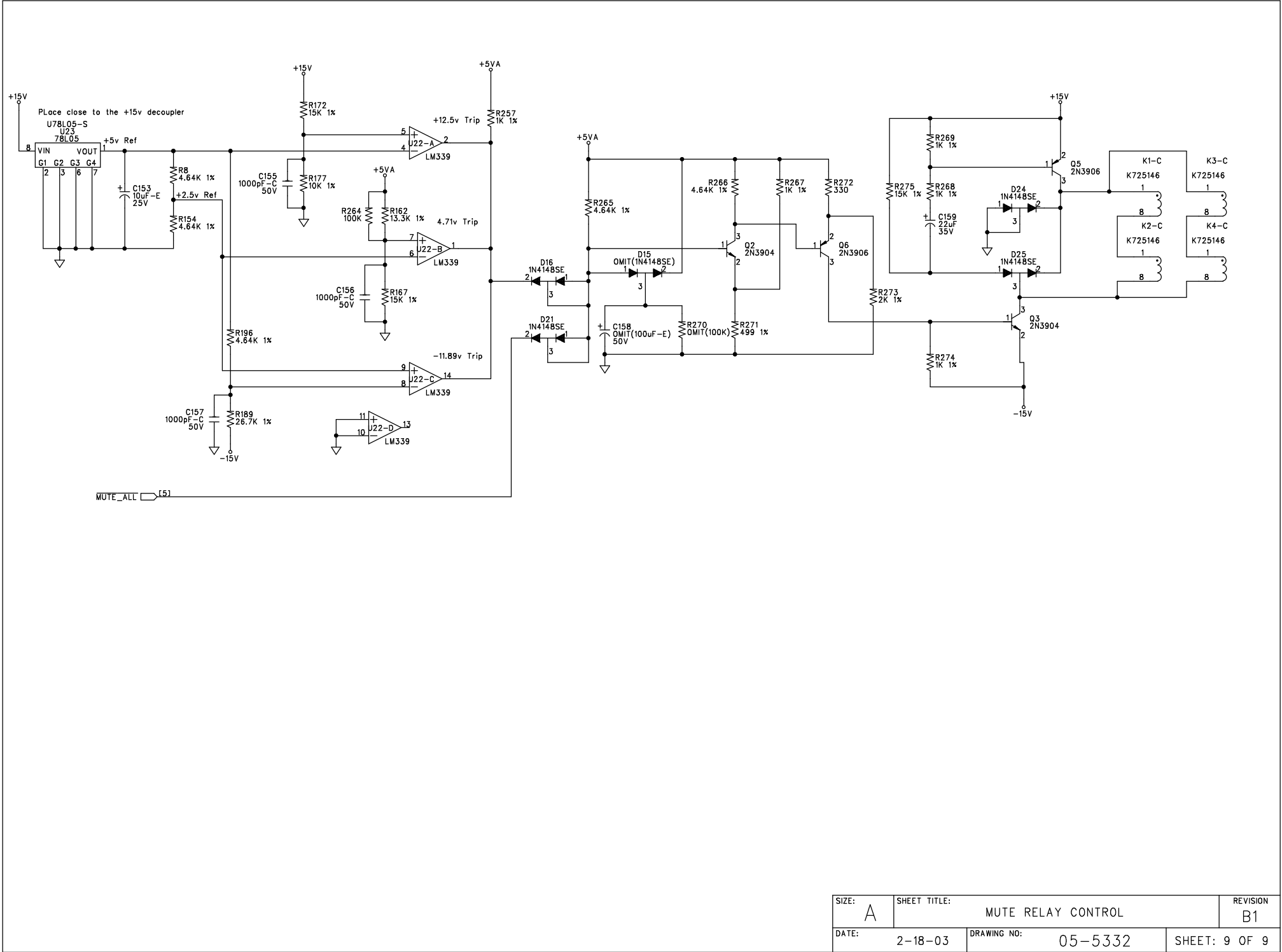
SIZE: A	SHEET TITLE: DRIVE RACK - MIDI	REVISION: B1
DATE: 2-18-03	DRAWING NO: 05-5332	SHEET: 6 OF 9



SIZE: A	SHEET TITLE: DRIVE RACK - OUTPUT 5-6		REVISION B1
DATE: 2-18-03		DRAWING NO: 05-5332	SHEET: 7 OF 9



SIZE: A	SHEET TITLE: DRIVE RACK - OUTPUT 7-8		REVISION: B1
DATE: 2-18-03	DRAWING NO: 05-5332	SHEET: 8 OF 9	



Bill Of Materials for 055332b1.sch on Tue Feb 18 15:58:32 2003

Qty	Reference	HMG#	Description	Audit	Schematic Part	PCB Decal
1	PCB1	80-5332	PCB 80-5332 dbx DRIDVE RACK ANALOG BOARD	PT2044	80XXXXXY	BARCODE
6	A1 A3-7	NON-PART	NON-PART, PCB ONLY, BREAKOFF PART	PT1481	BRKOFF	BRKOFF
2	C53-54	56-0033	CAP, 0.027uF, FILM, 100V, 5%, RFEF200, AMMO	PT1282	C0.027UF100JR	RFEF200
4	C140 C143 C147 C151	62-3129	CAP, 0.047uF, CER, 50V, 20%, 0805, T&R	PT1202	C0.047UC50M0805	0805
48	C17-20 C30-31 C35-37 C42 C44-45 C48 C50-51 C55-60 C68-69 C72-73 C75-76 C78-84 C89-92 C96-97 C113-116 C123 C138 C149 C160	62-3139	CAP, 0.1uF, CER, 50V, 20%, 0805, T&R	PT1087	C0.1UC50M0805	0805
19	C111-112 C117-122 C129-136 C155-157	62-3136	CAP, 1000pF, CER, 50V, 20%, 0805, T&R	PT1109	C1000PC50M0805	0805
4	C137 C139 C146 C152	60-1013	CAP, 100uF, ELEC, 50V, 20%, REJ200P, AMMO	PT1408	C100UE50MR	REJ200P
1	C158	OMIT	OMIT, CAP, 100uF, ELEC, 50V, 20%, REJ200P, AMMO, (60-1013)	PT1409	C100UE50MRO	REJ200P
2	C93-94	60-1034	CAP, 100uF, ELEC, 63V, 20%, REM200P, AMMO	PT1777	C100UE63MR	REM200P
8	C21 C23 C28-29 C67 C70-71 C74	62-3140	CAP, 10pF, CER, 50V, 5%, 0805, T&R	PT1088	C10PC50J0805	0805
7	C39 C98 C128 C144-145 C153-154	60-0050-01	CAP, 10uF, ELEC, 25V, 20%, RED200P, AMMO	PT1205	C10UE25MR	RED200P
20	C7-14 C22 C24 C100-103 C106-109 C141-142	62-3135	CAP, 120pF, CER, 50V, 5%, 0805, T&R	PT1440	C120PC50J0805	0805
1	C159	60-0010	CAP 22uF ELEC 35V 20% AMMO	PT2110	C22UE35MR	REE200P
10	C15-16 C47 C49 C65-66 C124-127	60-0402	CAP, 22uF, ELEC, NON-POL, 25V, 20%, REG200, AMMO	PT1084	C22UN25MR	REG200
10	C38 C40-41 C43 C61-64 C87-88	62-3131	CAP, 330pF, CER, 50V, 10%, 0805, T&R	PT1284	C330PC50K0805	0805
14	C1-6 C27 C34 C46 C52 C86 C95 C148 C150	62-3133	CAP, 470pF, CER, 50V, 10%, 0805, T&R	PT1086	C470PC50K0805	0805
2	C77 C85	62-3132	CAP, 47pF, CER, 50V, 5%, 0805, T&R	PT1085	C47PC50J0805	0805
4	C25-26 C32-33	60-0054-01	CAP, 47uF, ELEC, 16V, 20%, REE200P, AMMO	PT1108	C47UE16MR	REE200P
4	C99 C104-105 C110	62-3137	CAP, 68pF, CER, 50V, 5%, 0805, T&R	PT1285	C68PC50J0805	0805
23	D1-14 D16-17 D19-25	70-0113	DIO, MMBD4148SE, DUAL DIODE, 75V, 600mA, SOT-23, T&R	PT1326	D1N4148SE-S	SOT-23
1	D15	OMIT	OMIT, DIO, MMBD4148SE, DUAL DIODE, 75V, 600mA, SOT-23, T&R, (70-0113)	PT1327	D1N4148SE-S-O	SOT-23
1	D18	72-3601	DIODE, TL431, PROGRAMMABLE PRECISION REFERENCE, TO92(RAC)-V, AMMO	PT1469	DTL431-R	TO92(RAC)-V
2	A2 A8	NON-PART	NON-PART, FIDUCIAL, TARGET FOR AUTO INSERTION	PT1271	FIDUCIAL	FIDUCIAL
1	P7	32-0137	HDR, 2 PIN, .098 SPC, 2X1, SHROUDED, VERTICAL MT.	PT1854	HDR320137	HC21V98SP
4	P9-12	32-1077	HDR, 6 PIN, 0.1" SPC, 2 X 3, VERT, MALE	PT1683	HDR321077	HC32
6	P1-6	32-1079	HDR, 4 PIN, 0.1" SPC, 2 X 2, VERT, MALE	PT1414	HDR321079	HC22
1	P13	32-2000	HDR, 26 PIN, 0.1" SPC, 2 X 13, VERT, MALE	PT1298	HDR322000	HC132
1	P8	32-2004	HDR, 4 PIN, 0.118" SPC, 2 X 2, LKG, SHD, POL, VERT, MALE	PT1461	HDR322004	HC22118LSPM
3	J7-9	32-0116	CON, JACK, SHIELDED 5 PIN DIN, PCB MOUNT	PT1319	J320116	J320116
2	J1-2	32-0208	CON, JACK, XLR, CHASSIS PCB MOUNT, HORIZONTAL, B SERIES	PT1220	J320208	XLRF-1
8	JUMP1-8	32-1075	JUMPER, MINI, .100 SPC	PT1415	JP321075	PCBNUL
4	K1-4	72-5146	RELAY DPDT 12VDC POL SM	PT2219	K725146	KSLIM-8P
1	LBL1	30-0121	LABEL BARCODE AUTOINSERTABLE RAW	PT2790	LABEL300121	LABEL300121
6	L13-18	26-0217	IND, FERRITE BEAD, 2.5K OHM @ 70MHz, 0805, T&R	PT1261	LFB260217	0805
13	L1-12 L19	26-0219	INDUCTOR, FERRITE BEAD, 600 OHM @ 100MHz, 0805, T&R	PT1453	LFB260219	0805
4	MH1-3 MH5	NON-PART	NON-PART, MOUNTING HOLE, 0.156" NON-PLATED,#6	PT1044	MH156	MH156
2	MH4 MH6	NON-PART	NON-PART, TOOLING PIN HOLE, 156MIL HOLE	PT1416	MH156-TOOL	MH156-TOOL
1	MP1	NON-PART	NON-PART, MECHANICAL PLATED HOLE, 300 PAD, 156 HOLE, #6	PT1045	MP300H156	MP300H156
4	P14-17	32-0207	CON, PLUG, XLR, CHASSIS PCB MOUNT, HORIZONTAL, B SERIES	PT1217	P320207	XLRM-1
4	Q1-4	70-1058	XSTR, 2N3904, NPN, SOT-23, T&R	PT1203	Q2N3904-S	SOT-23
2	Q5-6	70-1059	XSTR, 2N3906, PNP, SOT-23, T&R	PT1057	Q2N3906-S	SOT-23
12	R32-33 R38-41 R43-44 R252 R255	50-1531	RES 0 5% 1/10W SM 0805 TA	PT1099	R0-C5-0805	0805

15	R259 R262 R20 R24 R102 R170 R174 R201-202 R204-207 R210-211 R216-217	OMIT	OMIT RES 0 5% 1/10W SM 0805 TA (50-1531)	PT1006 R0-C5-08050	0805
2	R151-152	52-4538	RES 1.21K 1% 1/10W SM 0805 TA	PT1810 R1.21KC1-0805	0805
8	R74-75 R82-83 R90-91 R98-99	52-4562	RES 10.2K 1% 1/10W SM 0805 TA	PT1831 R10.2KC1-0805	0805
4	R3-4 R7 R153	50-1515	RES 100 5% 1/10W SM 0805 TA	PT1018 R100-C5-0805	0805
7	R29 R31 R46 R48 R156 R159 R264	50-1504	RES 100K 5% 1/10W SM 0805 TA	PT1096 R100KC5-0805	0805
1	R270	OMIT	OMIT RES 100K 5% 1/10W SM 0805 TA (50-1504)	PT1576 R100KC5-08050	0805
7	R56 R63 R177 R186 R192-193 R199	52-4500	RES 10K 1% 1/10W SM 0805 TA	PT1034 R10KC1-0805	0805
12	R9 R14 R34 R36 R171 R173 R175-176 R178-179 R200 R203	52-3234	RES 12.1K 1% 1/10W SM 0805 TA	PT1707 R12.1KC1-0805	0805
9	R73 R76 R81 R84 R89 R92 R97 R100 R162	52-3227	RES 13.3K 1% 1/10W SM 0805 TA	PT1714 R13.3KC1-0805	0805
8	R71 R80 R85 R87 R96 R101 R118 R136	52-4563	RES 15.4 1% 1/10W SM 0805 TA	PT1832 R15.4C1-0805	0805
3	R167 R172 R275	52-3233	RES 15K 1% 1/10W SM 0805 TA	PT1708 R15KC1-0805	0805
35	R147 R155 R208-209 R212-215 R218-219 R232-235 R238-241 R243-251 R256-258 R263 R267-269 R274	52-4505	RES 1K 1% 1/10W SM 0805 TA	PT1037 R1KC1-0805	0805
4	R113 R123 R131 R141	50-1506	RES 1M 5% 1/10W SM 0805 TA	PT1011 R1MC5-0805	0805
4	R187 R191 R194 R198	52-4507	RES 2.67K 1% 1/10W SM 0805 TA	PT1039 R2.67KC1-0805	0805
4	R114 R124 R132 R142	52-4564	RES 2.94K 1% 1/10W SM 0805 TA	PT1833 R2.94KC1-0805	0805
6	R19 R42 R55 R66 R148 R181	50-1510	RES 200 5% 1/10W SM 0805 TA	PT1013 R200-C5-0805	0805
8	R11 R16 R22 R26 R161 R163 R166 R168	52-4501	RES 20K 1% 1/10W SM 0805 TA	PT1035 R20KC1-0805	0805
1	R189	52-0329	RES 26.7K 1% 1/10W SM 0805 TA	PT2115 R26.7KC1-0805	0805
4	R1-2 R5-6	52-3249	RES 27.4K 1% 1/10W SM 0805 TA	PT1701 R27.4KC1-0805	0805
25	R49-54 R59-62 R64 R103-110 R180 R222-223 R228 R230 R273	52-4506	RES 2K 1% 1/10W SM 0805 TA	PT1038 R2KC1-0805	0805
8	R115 R125 R133 R143 R160 R164-165 R169	52-3252	RES 3.01K 1% 1/10W SM 0805 TA	PT1704 R3.01KC1-0805	0805
3	R12 R17 R58	52-4509	RES 3.24K 1% 1/10W SM 0805 TA	PT1040 R3.24KC1-0805	0805
8	R77-79 R93-95 R121 R139	50-1537	RES 3.9M 5% 1/10W SM 0805 TA	PT1585 R3.9MC5-0805	0805
4	R21 R25 R35 R37	52-3220	RES 30.1K 1% 1/10W SM 0805 TA	PT1721 R30.1KC1-0805	0805
2	R57 R272	50-1517	RES 330 5% 1/10W SM 0805 TA	PT1020 R330-C5-0805	0805
4	R28 R30 R45 R47	50-1512	RES 33K 5% 1/10W SM 0805 TA	PT1015 R33KC5-0805	0805
1	R65	50-1528	RES 39K 5% 1/10W SM 0805 TA	PT1028 R39KC5-0805	0805
4	R119-120 R137-138	52-4524	RES 4.02K 1% 1/10W SM 0805 TA	PT1838 R4.02KC1-0805	0805
4	R86 R111 R129 R226	52-4520	RES 4.32K 1% 1/10W SM 0805 TA	PT1835 R4.32KC1-0805	0805
8	R112 R116 R126 R128 R130 R134 R144 R146	52-4510	RES 4.53K 1% 1/10W SM 0805 TA	PT1130 R4.53KC1-0805	0805
13	R8 R72 R88 R117 R122 R127 R135 R140 R145 R154 R196 R265-266	52-4565	RES 4.64K 1% 1/10W SM 0805 TA	PT1834 R4.64KC1-0805	0805
12	R188 R190 R195 R197 R231 R236-237 R242 R253-254 R260-261	52-4511	RES 4.99K 1% 1/10W SM 0805 TA	PT1041 R4.99KC1-0805	0805
8	R67-70 R157-158 R227 R229	52-4502	RES 49.9 1% 1/10W SM 0805 TA	PT1036 R49.9-C1-0805	0805
7	R149-150 R182 R185	52-4504	RES 499 1% 1/10W SM 0805 TA	PT1102 R499-C1-0805	0805

2	R220 R225 R271						
2	R13 R18	52-4512	RES 5.76K 1% 1/10W SM 0805 TA		PT1131 R5.76KC1-0805	0805	
4	R183-184 R221 R224	52-4515	RES 6.81K 1% 1/10W SM 0805 TA		PT1281 R6.81KC1-0805	0805	
4	R10 R15 R23 R27	52-4517	RES 7.5K 1% 1/10W SM 0805 TA		PT1790 R7.5KC1-0805	0805	
3	SC1-3	34-0125	SWITCH CAP, BLACK, ROUND		PT1354 SC340125	SC340125-FPE	
1	SW1	44-0050	SWITCH DPDT MINI IN-OUT 6 PIN E-SWITCH		PT1256 SW440050	SW440050	
2	SW2-3	44-0051	SWITCH, 4PDT, MINI IN-OUT, 12 PIN, E-SWITCH		PT1257 SW440051	SW440051	
4	T1-4	OMIT	OMIT, TRANSFORMER, OUTPUT, JT-123-DBX SAME AS RE-123-DBX (26-0112)		PT1215 TR260112-O	XFR-1	
4	U8 U10-11 U13	72-1439	IC, 5532MD, DUAL BIPOLAR OPAMP, SO8-200		PT1306 U5532MD-S	SO8-200	
1	U3	70-2146	IC, 6N138, OPTO ISOLATOR, DIP8-300-S		PT1492 U6N138-S1	DIP8-300-S	
1	U14	72-5426	IC, 74AC04, HEX INVERTER, SO14, T&R		PT1325 U74AC04-S	SO14	
1	U23	70-4143	REG 78L05 +5V 100ma 3-TERM POS SM TA		PT2220 U78L05-S	SO8	
3	U9 U12 U15	72-4032	IC, LF353M, DUAL,WIDE BANDWIDTH JFET INPUT OPAMP, SO8		PT1252 ULF353M-S	SO8	
1	U20	72-4038	IC LM1972 uPOT 2-CHANNEL 78db AUDIO ATTEN W/MUTE		PT1872 ULM1972-S	SO20W	
1	U22	72-4034	IC, LM339, QUAD COMPARATOR, SO14, T&R		PT1048 ULM339-S	SO14	
11	U1-2 U4-7 U16-19 U21	72-1480	IC, NJM4580, DUAL OP-AMP, SO8		PT1374 UNJM4580-S	SO8	