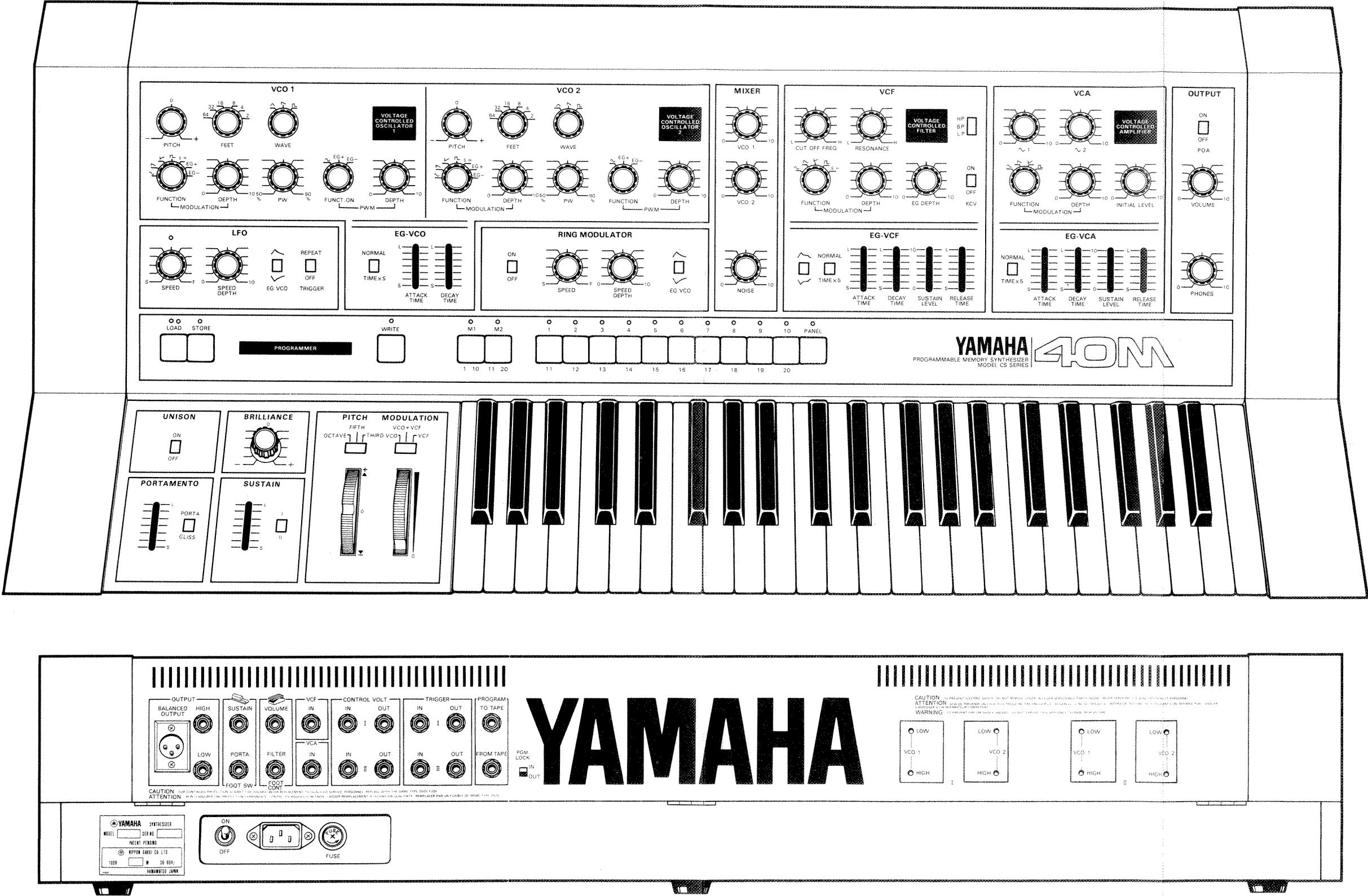
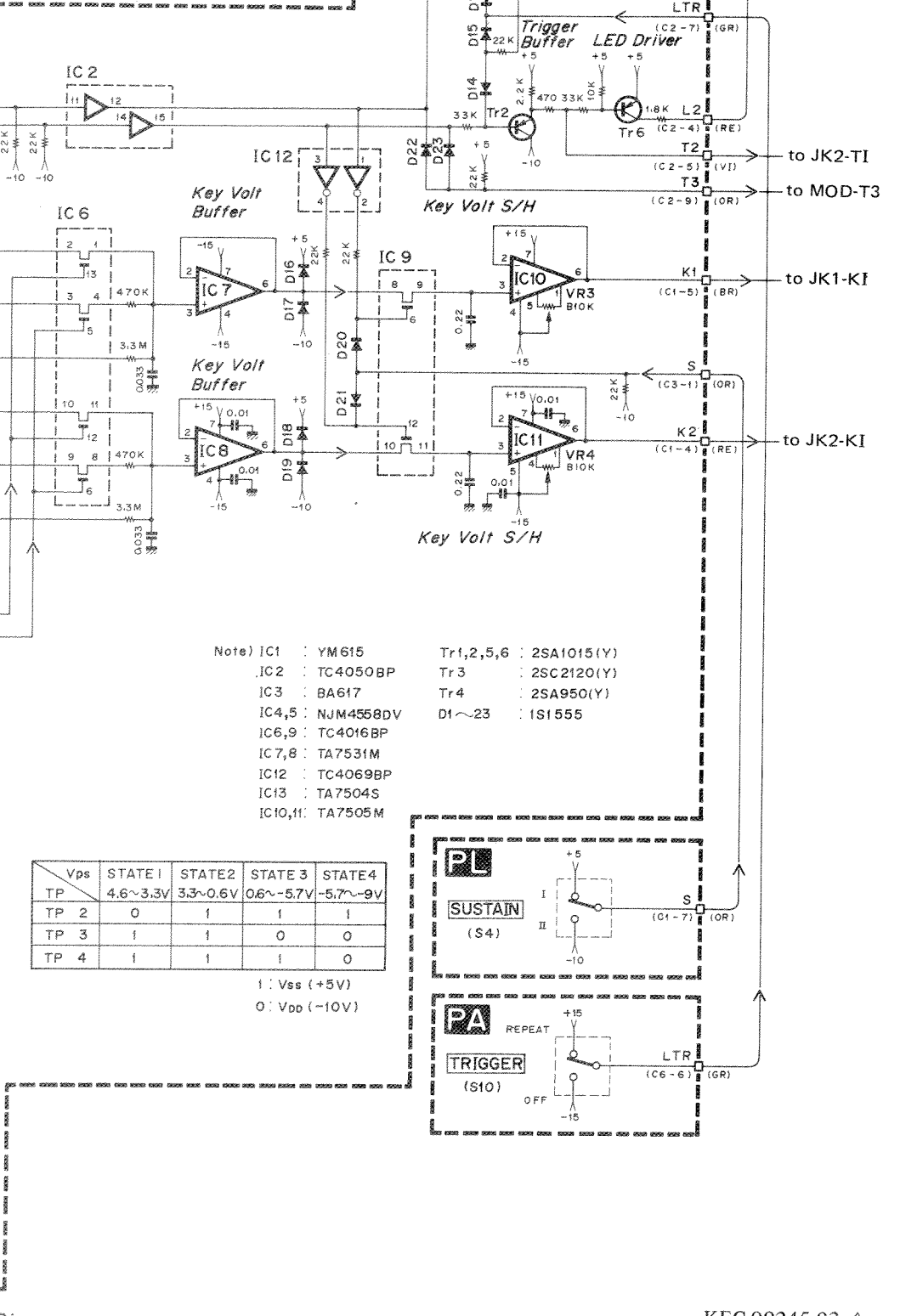
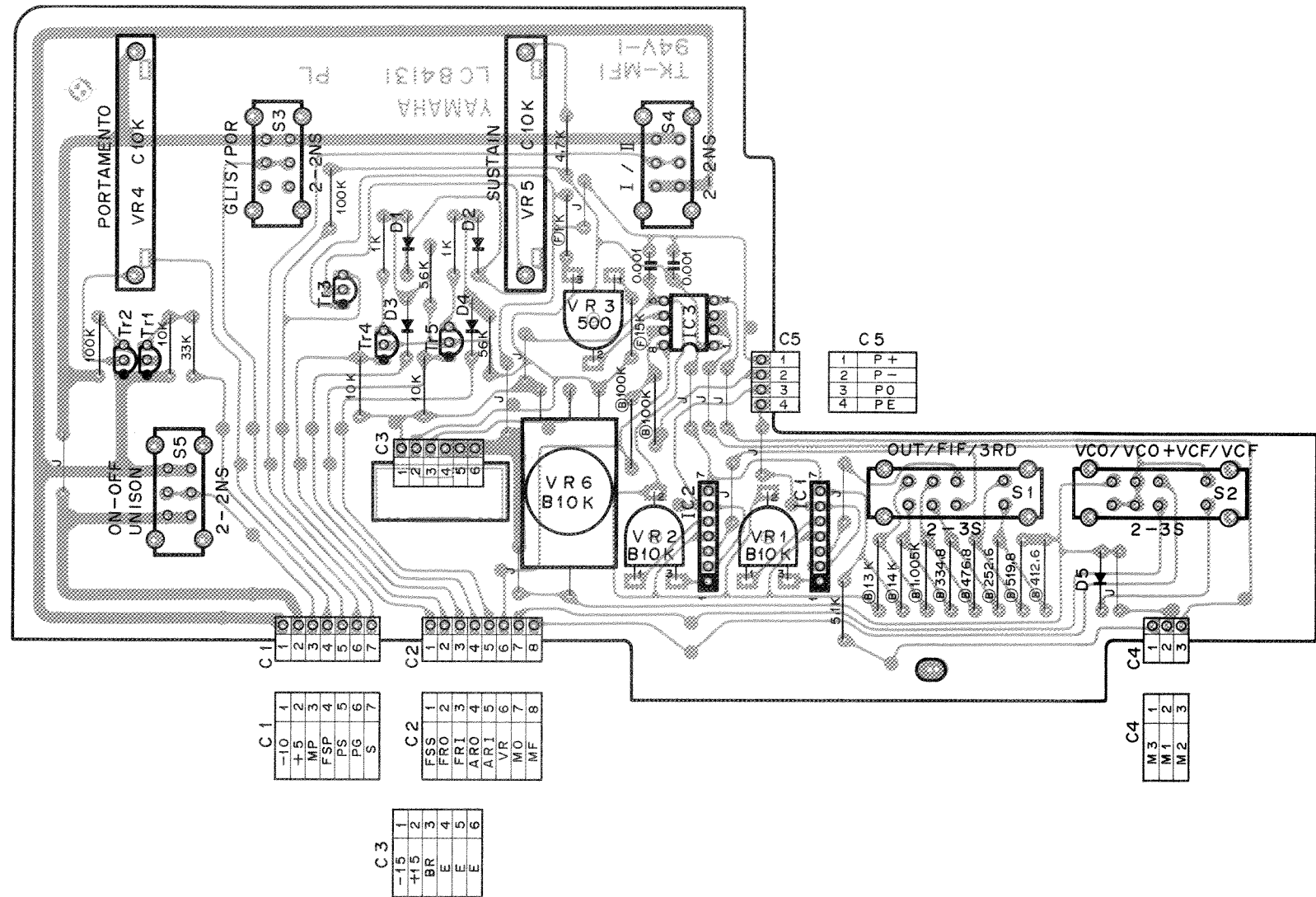


PANEL LAYOUT





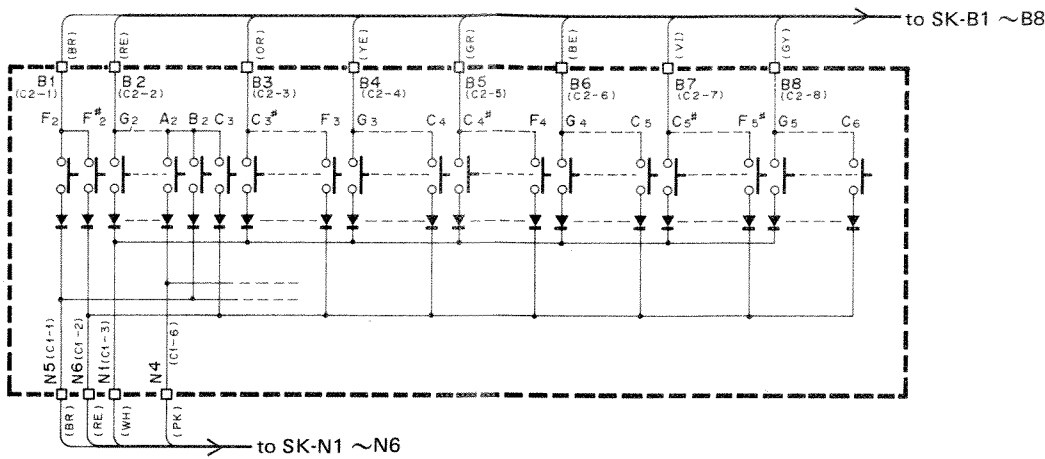


View from the printed pattern side of the circuit board

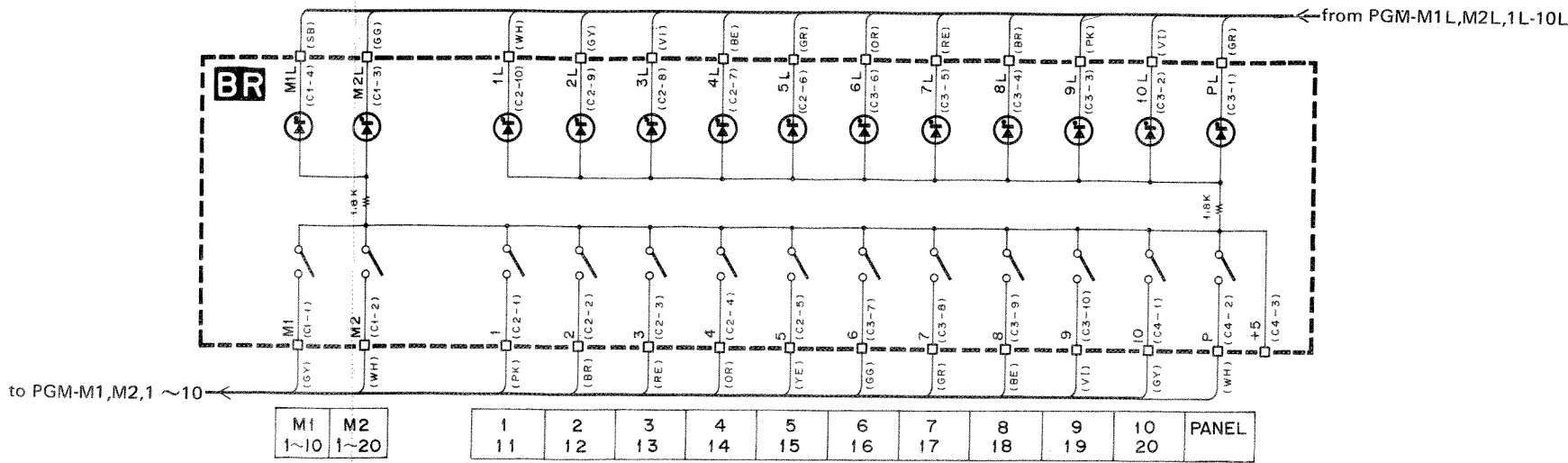
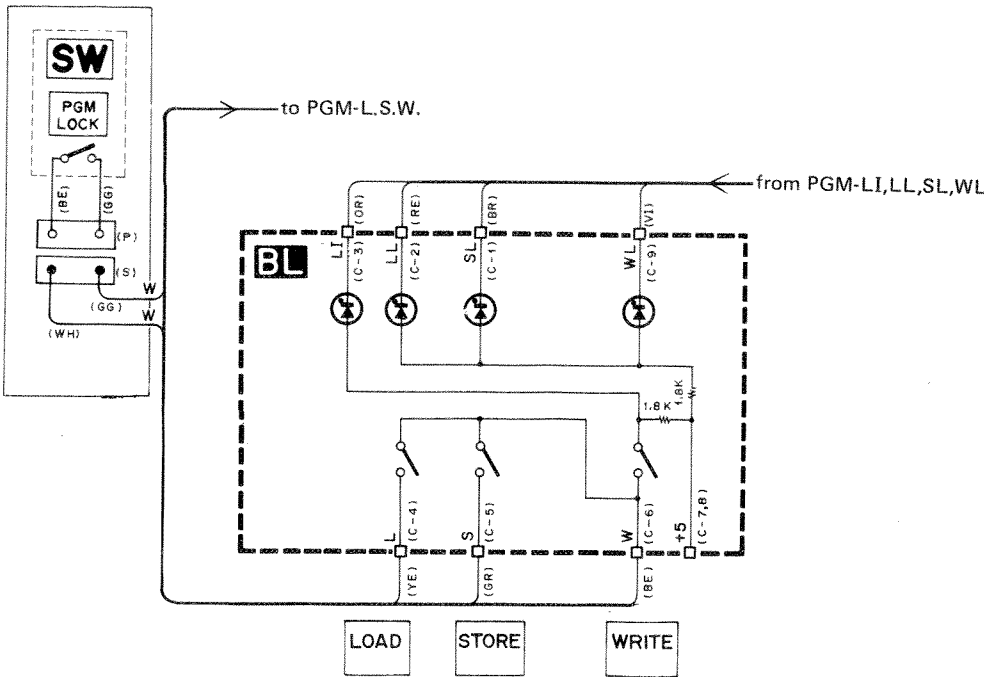
C1				C2				C3				C4				C5			
Pin No.	Pin Name	Wire Color	Destination	Pin No.	Pin Name	Wire Color	Destination	Pin No.	Pin Name	Wire Color	Destination	Pin No.	Pin Name	Wire Color	Destination	Pin No.	Pin Name	Wire Color	Destination
1	-10	BE	SK-10 (C3-4)	1	FSS	SB	JK1-FSS (C1-3)	1	-15	YE	DC-15 (C1-6)	1	M3	RE	W1-1	1	P	BR	W2-1
2	+5	GR	SK+5 (C3-3)	2	FRO	VI	FA-FR (C3-1)	2	+15	BR	DC+15 (C1-2)	2	M1	BL	W1-1	2	P	OR	W2-3
3	MP	YE	SK-MP (C3-2)	3	FRI	BE	DM-30 (C4-6)	3	BR	YE	FA-BR (C5-4)	3	M2	BR	W1-2	3	PO	RE	W2-2
4	FSP	PK	JK2-FSP (C1-3)	4	ARO	GR	FA-AR (C1-1)	4	E	BL	DC-AE (C1-4)					4	PE	BL	W2-4
5	PS	GR	SK-PS (C6-3)	5	ARI	YE	DM-39 (C8-5)	5	E	BL	PA-EK (C3-3)								
6	PG	YE	SK-PG (C6-2)	6	VR	OR	SK-VR (C6-1)	6	E	BL	SK-EK (C1-1)								
7	S	OR	SK-S (C3-1)	7	MO	GG	MOD-MW (C9-2)												
				8	MF	SB	IF-FW (C5-2)												

- Note)
- 1. Circuit Board : LC84132
 - 2. IC
 - IC1, 2 : TA7504S
 - IC3 : NJM4558DV
 - 3. Diode
 - D1 ~ 4 : 1S1555
 - 4. Transistor
 - Tr1 ~ 5 : 2SC1815 (Y)

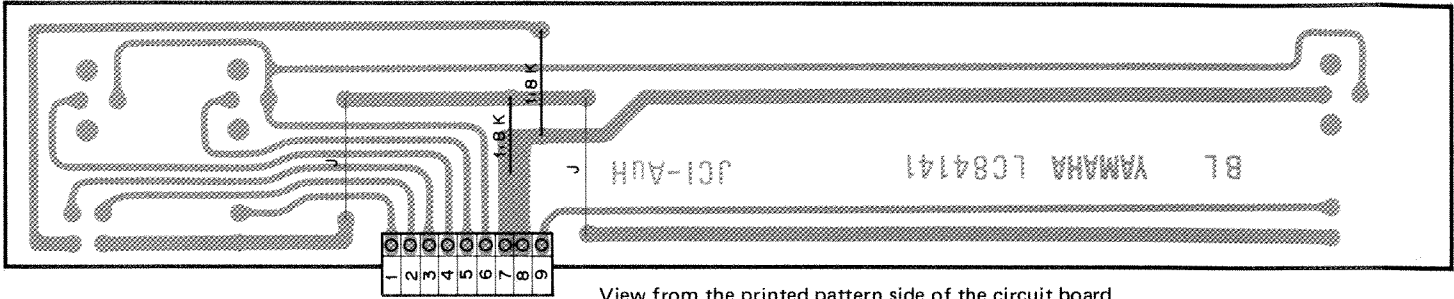
KS Circuit Diagram



BL, BR Circuit Diagram



BL, BR Circuit Board & Wiring



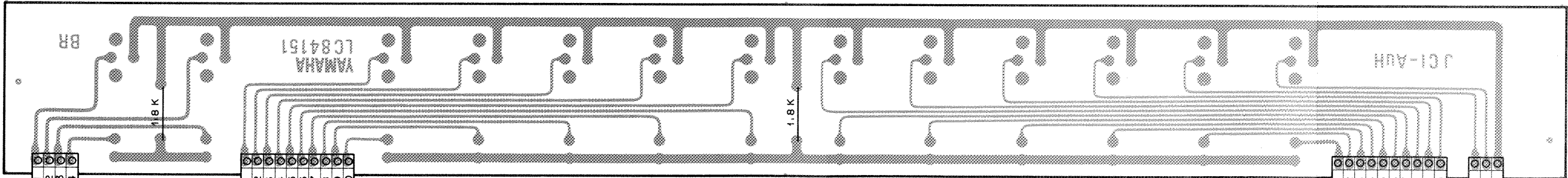
View from the printed pattern side of the circuit board

1	2	3	4	5	6	7	8	9
SL	LL	LI	L	S	W	+5	WL	

C1

Pin No.	Pin Name	Wire Color	Destination
1	SL	BR	PGM-SL (C14-10)
2	LL	RE	PGM-LL (C14-9)
3	LI	OR	PGM-LI (C2-5)
4	L	YE	PGM-L (C10-9)
5	S	GR	PGM-S (C10-8)
6	W	BE	SW-I (C-1)
7	+5	GR	PGM+5 (C1-2)
8	+5	GR	BR+5 (C4-3)
9	WL	VI	PGM-WL (C14-8)

Note)
1. Circuit Board : LC84141



View from the printed pattern side of the circuit board

1	2	3	4
M1	M2	M2L	M1L

1	2	3	4	5	6	7	8	9	10
1	2	3	4	5	6	7	8	9	10

1	2	3	4	5	6	7	8	9	10
PL	10L	9L	8L	7L	6L	5L	4L	3L	2L

1	2	3
10	P	+5

C1

Pin No.	Pin Name	Wire Color	Destination
1	M1	GY	GPM-M1 (C11-2)
2	M2	WH	PGM-M2 (C11-3)
3	M2L	GG	PGM-M2L (C14-5)
4	M1L	SB	PGM-M1L (C14-7)

C2

Pin No.	Pin Name	Wire Color	Destination
1	1	PK	PGM-1 (C11-4)
2	2	BR	PGM-2 (C11-5)
3	3	RE	PGM-3 (C11-6)
4	4	OR	PGM-4 (C12-4)
5	5	YE	PGM-5 (C12-3)
6	5L	GR	PGM-5L (C13-5)
7	4L	BE	PGM-4L (C14-3)
8	3L	VI	PGM-3L (C13-3)
9	2L	GY	PGM-2L (C14-2)
10	1L	WH	PGM-1L (C13-2)

C3

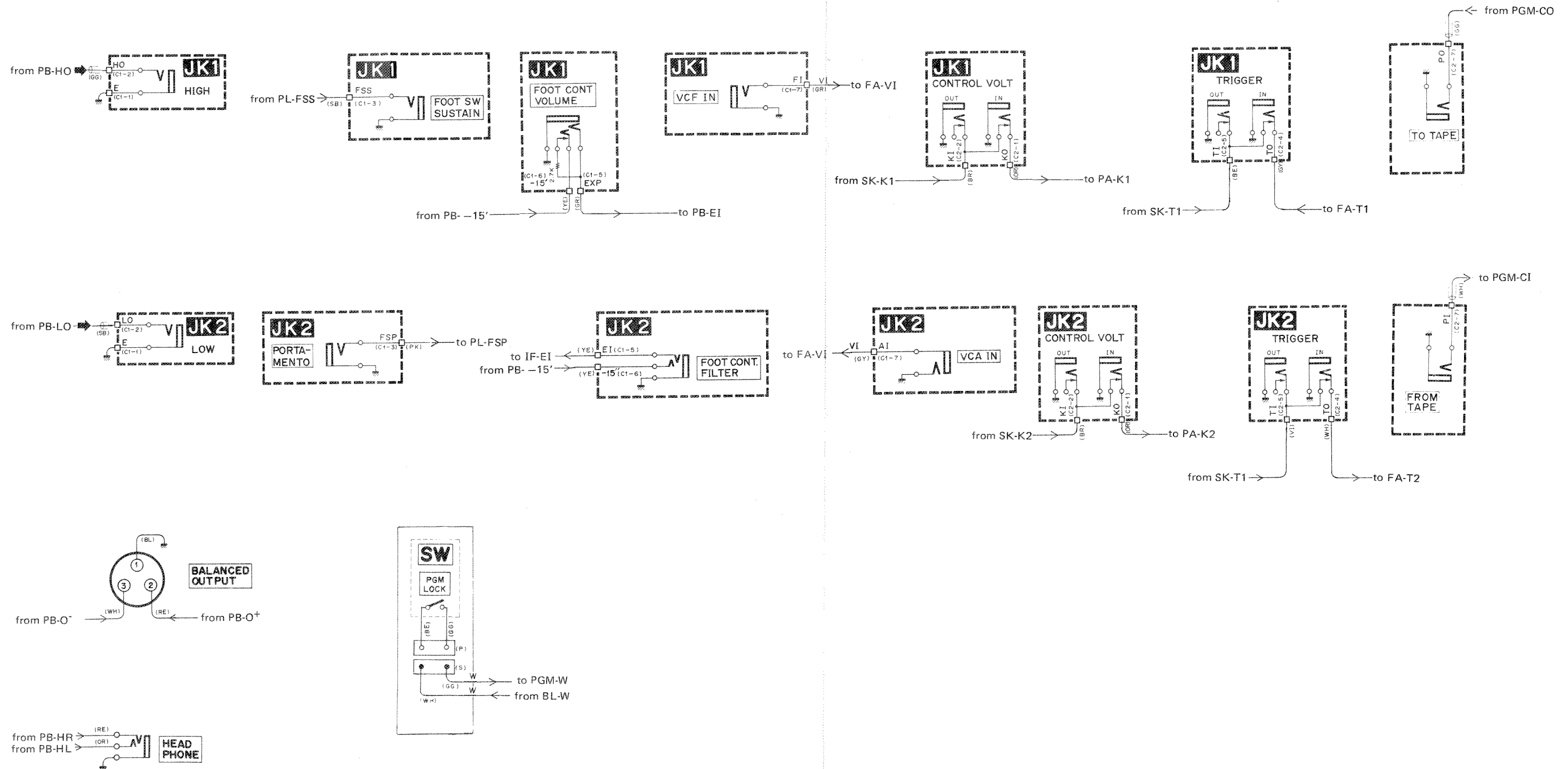
Pin No.	Pin Name	Wire Color	Destination
1	PL	GR	PGM-PL (C14-6)
2	10L	VI	PGM-10L (C14-4)
3	9L	PK	PGM-9L (C13-6)
4	8L	BR	PGM-8L (C13-1)
5	7L	RE	PGM-7L (C14-1)
6	6L	OR	PGM-6L (C13-4)
7	6	GG	PGM-6 (C12-2)
8	7	GR	PGM-7 (C12-1)
9	8	BE	PGM-8 (C12-5)
10	9	VI	PGM-9 (C12-6)

C4

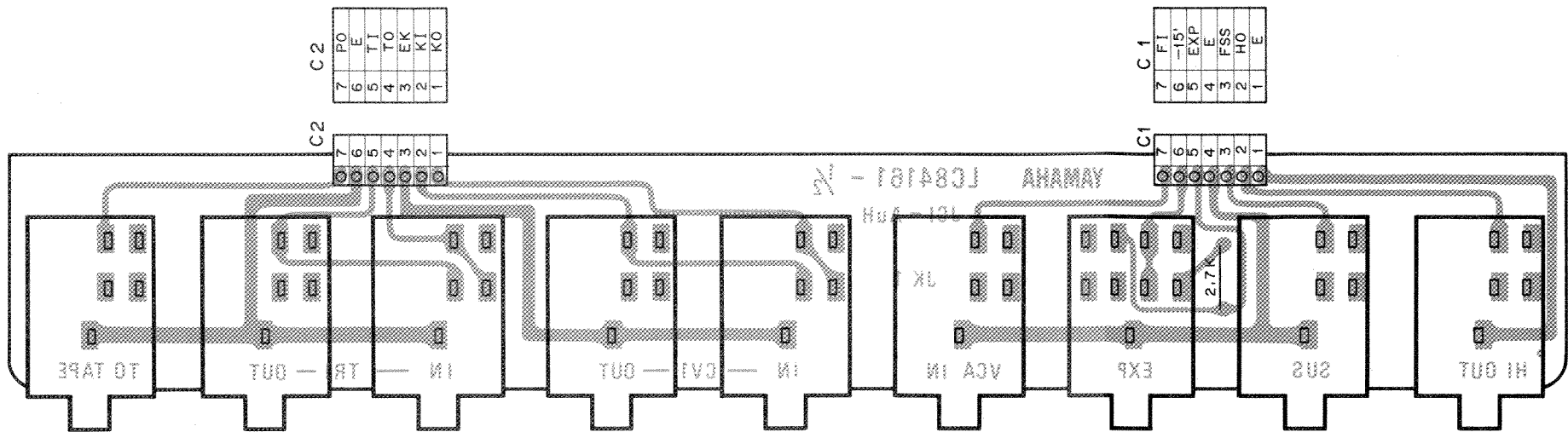
Pin No.	Pin Name	Wire Color	Destination
1	10	GY	PGM-10 (C12-7)
2	P	WH	PGM-P (C10-6)
3	+5	GR	BL+5 (C-8)

Note)
1. Circuit Board : LC84151

JK, SW Circuit Diagram



JK1 Circuit Board & Wiring

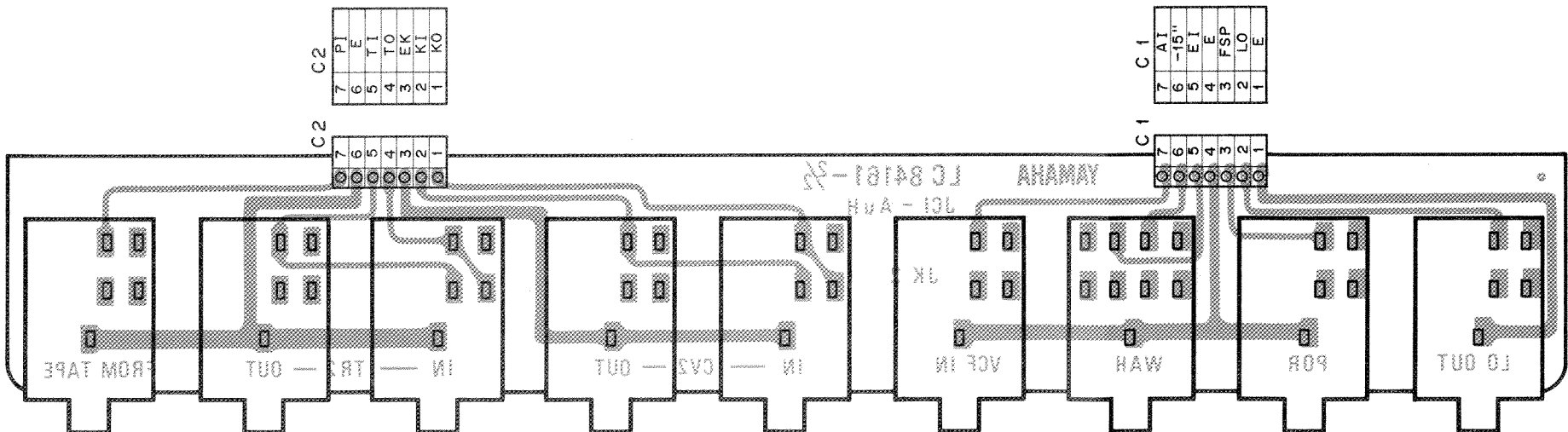


C1			
Pin No.	Pin Name	Wire Color	Destination
1	E	S-GG-S	
2	HO	S-GG	PB-HO (C6-7)
3	FSS	SB	PL-FSS (C2-1)
4	E	-	-
5	EXP	GR	PB-EI (C5-9)
6	-15'	YE	PB.-15' (C2-9)
7	FI	GR	FA-VI (C5-5)

C2			
Pin No.	Pin Name	Wire Color	Destination
1	KO	OR	PA-K1 (C5-3)
2	KI	BR	SK-K1 (C1-5)
3	EK	BL	PA-EK (C3-4)
4	TO	GY	FA-T1 (C10-1)
5	TI	BE	SK-T1 (C2-6)
6	E	S-GG-S	
7	PO	S-GG	PGM-CO (C2-4)

Note)
1. Circuit Board : LC84161

JK2 Circuit Board & Wiring



C1			
Pin No.	Pin Name	Wire Color	Destination
1	E	S-SB-S	
2	LO	S-SB	PB-LO (C6-9)
3	FSP	PK	PL-FSP (C1-4)
4	E	BL	FA-E (C8-2)
5	EI	YE	IF-EI (C7-1)
6	-15"	YE	PB.-15" (C2-10)
7	AI	GY	FA-VI (C1-7)

C2			
Pin No.	Pin Name	Wire Color	Destination
1	KO	YE	PA-K2 (C5-1)
2	KI	RE	SK-K2 (C1-4)
3	EK	BL	PA-EK (C3-5)
4	TO	WH	FA-T2 (C10-4)
5	TI	VI	SK-T2 (C2-5)
6	E	-	-
7	PI	S-WH	PGM-CI (C2-1)

Note)
1. Circuit Bor Board : LC84161

DC Circuit Diagram

