

# ThinkRecovery



## Infrastructure Recovery Software Solution

### Solutions for:

- Disaster Recovery



ThinkRecovery enables organizations to **extend** their disaster recovery solution to provide **rapid recovery** for **complex distributed applications** without the expense of deploying dedicated redundant infrastructure. In the event of a complete production application failure, ThinkRecovery **commandeers** existing remote resources from low-priority environments and **automatically rebuilds the application** infrastructure quickly and accurately.

By **leveraging** existing low-priority infrastructure such as test environments, ThinkRecovery makes rapid remote recovery **economical** for all of your production applications. Automatically responding with the **best practices** of your top IT staff, ThinkRecovery rapidly recovers specified production application environments at your remote location accurately and efficiently, without the need for human intervention. And if a return to the primary site is delayed, ThinkRecovery **enables** you to easily scale your recovery infrastructure to meet increasing demand.

## ThinkRecovery Capabilities

Disaster Recovery without the expense.

- **Reduces Cost:**  
By automatically repurposing existing low priority infrastructure, ThinkRecovery provides disaster recovery environments for all of your production applications without the high cost of dedicated remote infrastructure.
- **Increases Agility:**  
With ThinkRecovery, disaster recovery infrastructure is no longer off-limits when a new project demands infrastructure – application priorities allow infrastructure to be used for other purposes with comfort in the knowledge that it will be automatically recalled if needed to rebuild a high priority application environment.
- **Improves Service Levels:**  
ThinkRecovery minimizes costly downtime by automatically starting the remote recovery of your application infrastructure immediately after a fault is recognized.
- **Improves Business/IT Alignment:**  
By only using infrastructure for disaster recovery when a disaster has actually occurred, ThinkRecovery creates a visible alignment between resource allocation and business benefit.

**Don't place additional strain on your IT budget and resources. Do more with your existing network, system, storage and software assets. Do more with ThinkRecovery.**

## ThinkRecovery Key Features

**Pool** – ThinkRecovery leverages your underutilized data center resources by ‘pooling’ similar servers. This pool of generic server resources can be used to provision application servers and may be shared among multiple applications. Because ThinkRecovery pools your resources, you need fewer servers overall.

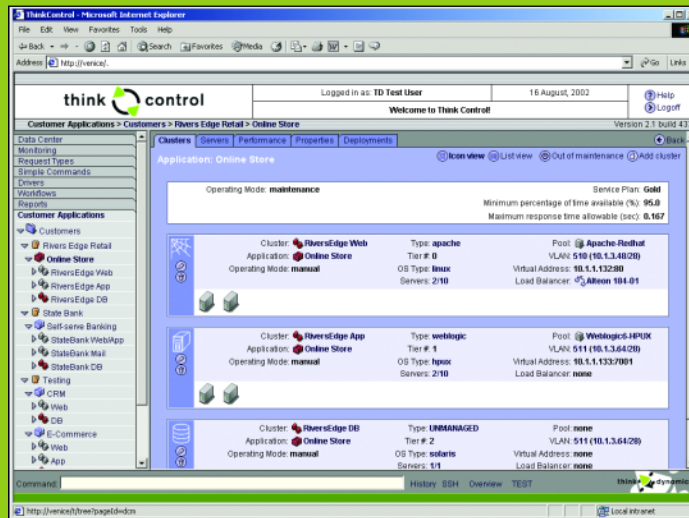
**Define** – ThinkRecovery captures your best practices on how to build and deploy an entire application – with application environment definitions spanning multiple servers and multiple clusters, multiple networking devices, etc.

**Automate** – ThinkRecovery automates the construction of entire applications. With a single click, you can install operating systems and applications and change networking configurations.

**Measure** – ThinkRecovery monitors application availability at production site. By integrating with existing network and systems management packages, ThinkRecovery avoids deploying duplicate agents on your network.

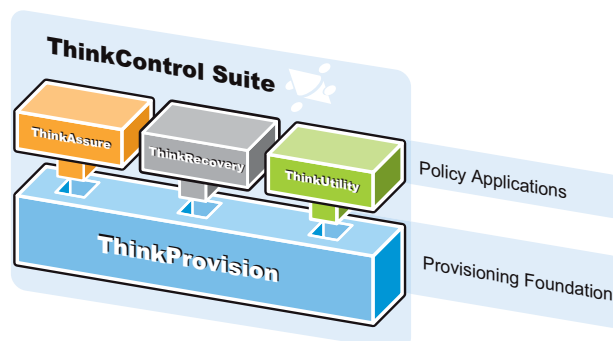
**Recover** – ThinkRecovery enables you to define application service levels and classes of service. You can prioritize which applications may possess access to additional computing power and which users take precedence.

## ThinkRecovery Overview



ThinkRecovery can recover complex application environments by building and redeploying from a generic pool of resources.

## Think Dynamics Solution Suite



## Supported environments

**Server architectures:**  
Traditional and blade server architectures

**Operating systems:**  
Solaris, AIX, Linux, Windows 2000

**Application servers:**  
BEA Weblogic, IBM Websphere

**Web servers:**  
Microsoft IIS, Apache

**Networking equipment:**  
Cisco, F5, Foundry, Extreme, Alteon