

xbiohazardx's Easy Crackme

Solution By COSTY

First of all... I tried to type something in the Password textbox. When I had typed the first letter the crackme showed me the message "NOOOOO!!!!!" and the the program closed.

So I opened the crackme in Reflector.
And Have a look...

```
Private Sub TextBox1_TextChanged(ByVal sender As Object, ByVal e As EventArgs)
    If (MyProject.Computer.Registry.LocalMachine.OpenSubKey("SOFTWARE\biohazard\User") Is Nothing) Then
        Interaction.MsgBox("NOOOOO!!!!!", MsgBoxStyle.OkOnly, Nothing)
        Me.Close
    ElseIf Me.Timer1.Enabled Then
        Interaction.MsgBox("You cant put text here yet...", MsgBoxStyle.OkOnly, Nothing)
        Me.Close
    End If
End Sub
```

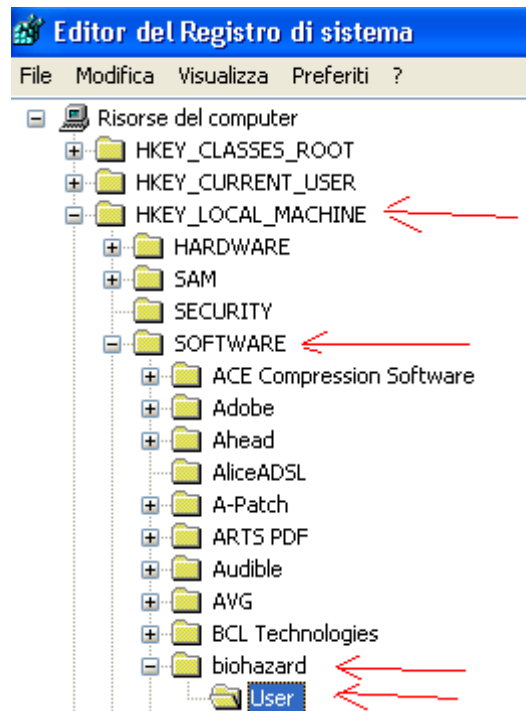
In this routine there are 2 checks:

If the registry key "SOFTWARE\biohazard\User" in Local Machine doesn't exist It display a Message saying "NOOOOO!!!!!" and then it terminates the program.

Else if Timer1 is enabled it displays "You cant put text here yet..." and then terminates the program.

So I have to create the registry key.

I used regedit.exe.



Now I have to disable timer 1.

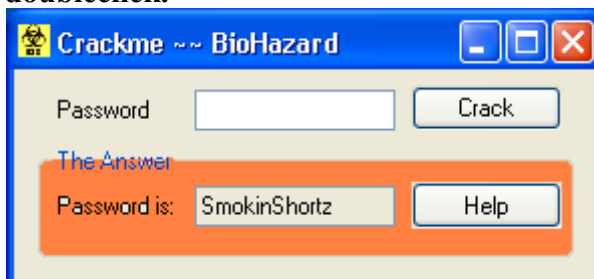
So I searched inside the crackme the string timer1.enabled = False and...

```

Private Sub GroupBox1_DoubleClick(ByVal sender As Object, ByVal e As EventArgs)
    Me.Timer1.Enabled = False
    Interaction.MsgBox("Good. Good. Good. You have disabled the timer.", MsgBoxStyle.OkOnly, Nothing)
End Sub

```

So I have to doubleclick the GroupBox1. The GroupBox is a Group of different objects in a rectangle. The Orange area is where i have to doubleclick.



Now have a look at this routine:

```

Private Sub Button1_Click(ByVal sender As Object, ByVal e As EventArgs)
    If (MyProject.Computer.Registry.LocalMachine.OpenSubKey("SOFTWARE\biohazard\User") Is Nothing) Then
        Interaction.MsgBox("Not yet.", MsgBoxStyle.OkOnly, Nothing)
        Me.Close
    ElseIf (Me.TextBox1.Text <> Me.TextBox2.Text) Then
        Interaction.MsgBox("Please enter a password.", MsgBoxStyle.OkOnly, Nothing)
    ElseIf (Me.TextBox1.Text = Me.TextBox2.Text) Then
        Interaction.MsgBox("Congrats. even though it was easy, you cracked me.", MsgBoxStyle.DefaultButtons1, Nothing)
        Me.Close
    End If
End Sub

```

Button1 is the button labeled "Crack".

It controls if the key "SOFTWARE\biohazard\User" in LocalMachine exists. If it doesn't exist it closes the crackme. Else It checks if the text in textbox1 is equal to the text in textbox2.

So the right password is "SmokinShortz".

So I tried to type this password in the Password checkbox but the program doesn't let me to type anything. It displays "STOP TYPING OMGGG".

The problem is this routine:

```

Private Sub TextBox1_KeyDown(ByVal sender As Object, ByVal e As KeyEventArgs)
    Interaction.MsgBox("STOP TYPING OMGGG", MsgBoxStyle.OkOnly, Nothing)
    Me.Close
End Sub

```

It checks if I press any key trying to type in the textbox1. But I don't need to type: I used the mouse.

I selected the word in the textbox2.

I clicked with the right button and I clicked "copy".

The I pasted with the mouse in the password textbox.

The I clicked "Check"... It works correctly.

So...

1) Create The key SOFTWARE\biohazard\User" in LocalMachine.

2) Double click in the GroupBox1

3) Copy the text from textbox2 and paste it in textbox1 using the mouse.