

Engine & Cooling	Fuel	Ignition	Electrical	Running gear	Torque settings	Capacities	Notes & Illustrations
------------------	------	----------	------------	--------------	-----------------	------------	-----------------------



## Automotive Technical DATA BOOK

Click on one of the buttons above to view data for this car. To return to this screen and make another choice, click anywhere on the data screen.

MENU

HELP

### Engine and cooling system CX 20 1982 to 1988

Type	829A500 / 501	
Capacity (cm <sup>3</sup> ) / number of cylinders	1995 / 4	
Compression ratio / pressure	bar	9.2 / _
Oil pressure	bar	1.4 [4.4]
Oil temperature	°C	90
Valve clearance - inlet	mm	0.10
Valve clearance - exhaust	mm	0.25
Firing order	1-3-4-2	
No 1 cylinder position	FE	
Thermostat opening temperature	°C	78
Radiator cap pressure	bar	1.0

### Fuel system CX 20 1982 to 1988

Idle speed - manual [auto]	rpm	750 to 800
Fast idle speed - manual [auto]	rpm	_
CO @ idle speed [3000 rpm] - see page VI	%	≤0.5 N/A
HC @ idle speed [3000 rpm] - see page VI	ppm	≤100
CO <sub>2</sub> @ idle speed [3000 rpm] - see page VI	%	_
O <sub>2</sub> @ idle speed [3000 rpm] - see page VI	%	_
Carburettor / fuel injection	Weber/Solex	
Type / ref	W: 34 DMTR 46. S: 34 CICF 214	
Main jet / needle	W: 112, 120. S: 127.5, 115	
Injection pressure	bar	_
Pump pressure	bar	≤0.33
Octane rating	RON	97[RA] <sup>1</sup>

### Ignition system CX 20 1982 to 1988

Type	Electronic	
Ignition coil	Bosch, Ducellier	
Primary resistance	ohms	0.70 to 0.94
Ballast resistor	ohms	_
Voltage - Tmnl 15(+) to earth	V	_
Distributor	Ducellier	
Points gap (air gap)	mm	_
Dwell angle	° (%)	_
Condenser capacity	µF	_
Rotation	Anticlockwise	
Ignition timing - basic [static	° Crankshaft @ rpm	10±1 BTDC @ 750 to 800 <sup>1</sup>
V = Vacuum NV = No Vacuum	NV	
Total ignition advance	° Crankshaft @ rpm	R303-D59
	° Crankshaft @ rpm	_
	° Crankshaft @ rpm	_
Centrifugal check.	° Crankshaft @ rpm	0 @ 1000 to 1400
	° Crankshaft @ rpm	11 to 15 @ 3000
	° Crankshaft @ rpm	20 to 24 @ 5000
Vacuum range check	mbar	67 to 480
Maximum vacuum advance	° Crankshaft	12 to 16
Spark plugs	AC/Champion	
Type	42LTS / S9YCC	
Electrode gap	mm	0.60 to 0.70

### Electrical system CX 20 1982 to 1988

Battery	V / CC / RC	12 / 250 / 45, 70Ah
Alternator voltage / full load current / engine rpm	_	
Starter motor current / voltage - cranking	A / V	130 to 160 / _
- locked	A / V	355 to 380 / 6.8 to 7.2

### Running gear CX 20 1982 to 1988

<b>Brakes -</b>		
Front (min. friction material thickness)	mm	3.0
Rear (min. friction material thickness)	mm	2.0

<b>Tyres</b>		
Saloon	Size	185x14: 185/70x14: 195/70x14
Estate / Van	Size	185x14: 195/70x14
Pressure - front / rear - Saloon	bar	2.0 / 2.1 <sup>2</sup>
- Estate / Van	bar	2.0 / 2.2 <sup>3</sup>

<b>Front suspension / wheel alignment</b>		
Toe-in (+) / Toe-out (-)	mm [°]	+1.0 to 4.0
Camber	0-29'+13'	
Castor	-25' to -1°15'	
King pin inclination	_	

<b>Rear suspension / wheel alignment</b>		
Toe-in (+) / Toe-out (-)	mm [°]	0 to +4.0
Camber	0+0-24'	

### Torque wrench settings CX 20 1982 to 1988

Cylinder head - stage 1	Nm	50
- stage 2	Nm	80
Cylinder head - stage 3	Nm	- 90°
- stage 4	Nm	93
Big-end bearings	Nm	45 to 50
Main bearings	Nm	88 to 98
Clutch cover	Nm	23
Flywheel [driveplate]	Nm	60 to 65 locked
Front hubs	Nm	350 to 400
Rear hubs	Nm	_
Wheel nuts / bolts	Nm	70 to 90
Spark plugs	Nm	15 to 20

### Capacities CX 20 1982 to 1988

Engine oil & filter	litres	4.5
Gearbox - 4-speed [5-speed]	litres	1.6
Automatic transmission - refill	litres	_
Final drive	litres	WT
Cooling system	litres	9.0
Fuel tank	litres	68

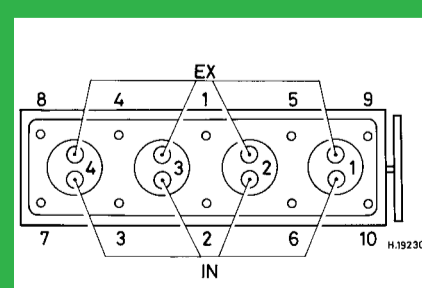
### Notes and Illustrations

<sup>1</sup>[E 95 RON]: 8 BTDC @ 900

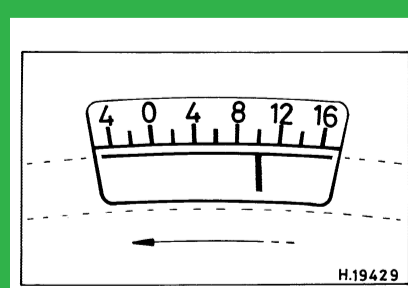
<sup>2</sup>1986 ▶: 2.2 / 2.1

<sup>3</sup>PAS: 1.9 / 2.1. 195/70x14: 2.4 / 2.0, 1986 ▶: 2.5 / 2.3

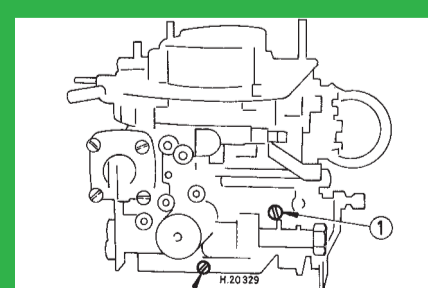
1: Idle speed 2: CO / Mixture



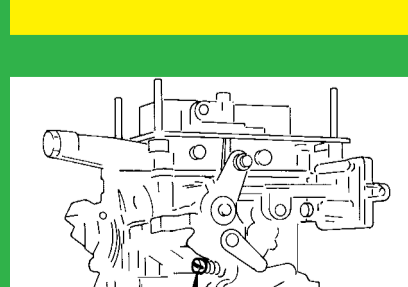
1995 cm<sup>3</sup>



1995 cm<sup>3</sup>



Weber DMTR



Solex CICF