

Engine & Cooling	Fuel	Ignition	Electrical	Running gear	Torque settings	Capacities	Notes & Illustrations
------------------	------	----------	------------	--------------	-----------------	------------	-----------------------



Automotive Technical DATA BOOK

Click on one of the buttons above to view data for this car. To return to this screen and make another choice, click anywhere on the data screen.

MENU

HELP

Engine and cooling system CX 22 1985 to 1991

Type		J6TA500
Capacity (cm ³) / number of cylinders		2165 / 4
Compression ratio / pressure	bar	9.8 / _
Oil pressure	bar	1.4 [4.4]
Oil temperature	°C	90
Valve clearance - inlet	mm	0.10
Valve clearance - exhaust	mm	0.25
Firing order		1-3-4-2
No 1 cylinder position		FE
Thermostat opening temperature	°C	86
Radiator cap pressure	bar	1.0

Fuel system CX 22 1985 to 1991

Idle speed - manual [auto]	rpm	800±50
Fast idle speed - manual [auto]	rpm	1400 to 1500
CO @ idle speed [3000 rpm] - see page VI	%	≤0.5 N/A
HC @ idle speed [3000 rpm] - see page VI	ppm	≤100
CO ₂ @ idle speed [3000 rpm] - see page VI	%	≥9.0
O ₂ @ idle speed [3000 rpm] - see page VI	%	_
Carburettor / fuel injection		Weber
Type / ref		34 DMTR 110 / 100 W 145-50
Main jet / needle		115, 97'
Injection pressure	bar	_
Pump pressure	bar	≤0.33
Octane rating	RON	98[E 95 RON]

Ignition system CX 22 1985 to 1991

Type		Electronic
Ignition coil		Bosch, Ducellier
Primary resistance	ohms	0.70 to 0.94
Ballast resistor	ohms	_
Voltage - Tmnl 15(+) to earth	V	_
Distributor		Ducellier
Points gap (air gap)	mm	_
Dwell angle	° (%)	_
Condenser capacity	µF	_
Rotation		Anticlockwise
Ignition timing - basic [static	° Crankshaft @ rpm	10±1 BTDC @ 800
V = Vacuum NV = No Vacuum		NV
Total ignition advance	° Crankshaft @ rpm	C022-D017
Centrifugal check.	° Crankshaft @ rpm	0 @ 1000 to 1400
Vacuum range check	mbar	90 to 430
Maximum vacuum advance	° Crankshaft	18 to 22
Spark plugs		Eyquem/Champion
Type		C72LJS / S7YCC
Electrode gap	mm	0.80

Electrical system CX 22 1985 to 1991

Battery	V / CC / RC	12 / 250 / 45, 70Ah
Alternator voltage / full load current / engine rpm		13.5 / _ / 4000
Starter motor current / voltage - cranking	A / V	130 to 160 / _
- locked	A / V	355 to 380 / 6.8 to 7.2

Running gear CX 22 1985 to 1991

Brakes -		
Front (min. friction material thickness)	mm	3.0
Rear (min. friction material thickness)	mm	2.0
Tyres		
Saloon	Size	185/70x14: 195/70x14
Estate / Van	Size	195/70x14
Pressure - front / rear - Saloon	bar	2.2 / 2.1
- Estate / Van	bar	2.5 / 2.3
Front suspension / wheel alignment		
Toe-in (+) / Toe-out (-)	mm [°]	+1.0 to 4.0
Camber		0-29'+13'
Castor		-25' to -1°15'
King pin inclination		_
Rear suspension / wheel alignment		
Toe-in (+) / Toe-out (-)	mm [°]	0 to +4.0
Camber		0+0-24'

Torque wrench settings CX 22 1985 to 1991

Cylinder head - stage 1	Nm	50
- stage 2	Nm	80
Cylinder head - stage 3	Nm	93, warm up
- stage 4	Nm	Cool for 2 hours, 93
Big-end bearings	Nm	65
Main bearings	Nm	88 to 98
Clutch cover	Nm	23
Flywheel [driveplate]	Nm	60 to 65 locked
Front hubs	Nm	375
Rear hubs	Nm	400
Wheel nuts / bolts	Nm	90
Spark plugs	Nm	10 to 13

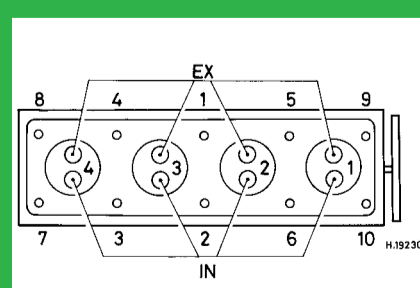
Capacities CX 22 1985 to 1991

Engine oil & filter	litres	5.3
Gearbox - 4-speed [5-speed]	litres	1.8
Automatic transmission - refill	litres	_
Final drive	litres	WT
Cooling system	litres	12.0
Fuel tank	litres	68

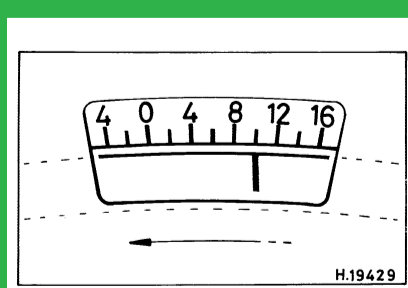
Notes and Illustrations

30.10.85 ▶: 115, 117

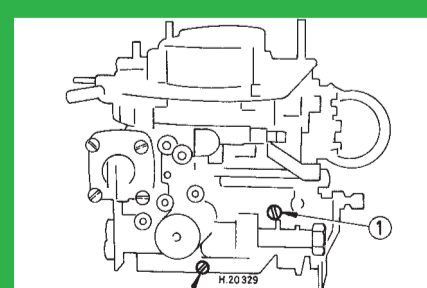
1: Idle speed 2: CO / Mixture



2165 cm³



2165 cm³



Weber DMTR