

[Engine & Cooling](#)
[Fuel](#)
[Ignition](#)
[Electrical](#)
[Running gear](#)
[Torque settings](#)
[Capacities](#)
[Notes & Illustrations](#)



Automotive Technical DATA BOOK

Click on one of the buttons above to view data for this car. To return to this screen and make another choice, click anywhere on the data screen.

MENU

HELP

Engine and cooling system Fiorino 1100 1991 to 1992

Type	146 A9.000 SOHC 40kW	
Capacity (cm ³) / number of cylinders	1116 / 4	
Compression ratio / pressure	bar	9.35±0.15 / _
Oil pressure	bar	[3.4 to 4.9]
Oil temperature	°C	100
Valve clearance - inlet	mm	0.30±0.05
Valve clearance - exhaust	mm	0.40±0.05
Firing order	1-3-4-2	
No 1 cylinder position	TBE	
Thermostat opening temperature	°C	80 to 84
Radiator cap pressure	bar	0.98

Fuel system Fiorino 1100 1991 to 1992

Idle speed - manual [auto]	rpm	850±50
Fast idle speed - manual [auto]	rpm	_
CO @ idle speed [3000 rpm] - see page VI	%	1.0±0.5
HC @ idle speed [3000 rpm] - see page VI	ppm	≤1200
CO ₂ @ idle speed [3000 rpm] - see page VI	%	_
O ₂ @ idle speed [3000 rpm] - see page VI	%	_
Carburettor / fuel injection	Weber	
Type / ref	32 ICEV 62/250	
Main jet / needle	127	
Injection pressure	bar	_
Pump pressure	bar	0.15 to 0.20
Octane rating	RON	95[E 95 RON]

Ignition system Fiorino 1100 1991 to 1992

Type	Electronic	
Ignition coil	Marelli BAE 506 A	
Primary resistance	ohms	0.756 to 0.924
Ballast resistor	ohms	_
Voltage - Tmnl 15(+) to earth	V	_
Distributor	Marelli	
Points gap (air gap)	mm	[0.30 to 0.40]
Dwell angle	° (%)	_
Condenser capacity	µF	_
Rotation	Clockwise	
Ignition timing - basic [static	° Crankshaft @ rpm	10 BTDC @ idle
V = Vacuum NV = No Vacuum	NV	
Total ignition advance	° Crankshaft @ rpm	_
	° Crankshaft @ rpm	_
	° Crankshaft @ rpm	_
Centrifugal check.	° Crankshaft @ rpm	0 @ 1400 to 1800
	° Crankshaft @ rpm	7 to 11 @ 3000
	° Crankshaft @ rpm	20 to 24 @ 5200
Vacuum range check	mbar	132 to 400
Maximum vacuum advance	° Crankshaft	12 to 16
Spark plugs	Bosch/Champion	
Type	WR7DC / RN9YC	
Electrode gap	mm	0.70 to 0.80

Electrical system Fiorino 1100 1991 to 1992

Battery	V / CC / RC	12 / 140 / 34
Alternator voltage / full load current / engine rpm	14.0 to 14.3 / 45 / 3500	
Starter motor current / voltage - cranking	A / V	170 / 9.4
- locked	A / V	330 to 350 / 6.7 to 7.1

Running gear Fiorino 1100 1991 to 1992

Brakes -		
Front (min. friction material thickness)	mm	1.5
Rear (min. friction material thickness)	mm	1.5

Tyres		
Saloon	Size	_
Estate / Van	Size	165/70x13
Pressure - front / rear - Saloon	bar	_
- Estate / Van	bar	1.9 / 1.9

Front suspension / wheel alignment

Toe-in (+) / Toe-out (-)	mm [°]	-3.0±1.0
Camber	+35'±30'	
Castor	+30'±30'. Pick-up: +25'±30' ¹	
King pin inclination	_	

Rear suspension / wheel alignment

Toe-in (+) / Toe-out (-)	mm [°]	+5.0±2.0
Camber	Van: -1°±30' ²	

Torque wrench settings Fiorino 1100 1991 to 1992

Cylinder head - stage 1	Nm	65 ³
- stage 2	Nm	+ 90 ³
Cylinder head - stage 3	Nm	+ 90 ³
- stage 4	Nm	_
Big-end bearings	Nm	51
Main bearings	Nm	80
Clutch cover	Nm	16
Flywheel [driveplate]	Nm	83
Front hubs	Nm	216
Rear hubs	Nm	216
Wheel nuts / bolts	Nm	86
Spark plugs	Nm	25 to 30

Capacities Fiorino 1100 1991 to 1992

Engine oil & filter	litres	3.5
Gearbox - 4-speed [5-speed]	litres	2.95
Automatic transmission - refill	litres	_
Final drive	litres	WT
Cooling system	litres	5.0
Fuel tank	litres	54

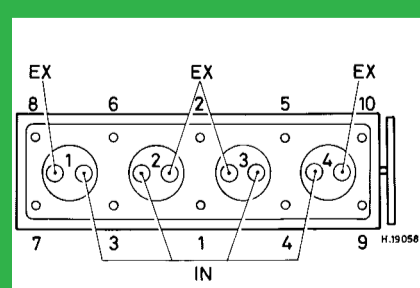
Notes and Illustrations

¹Combi: +35'±30'

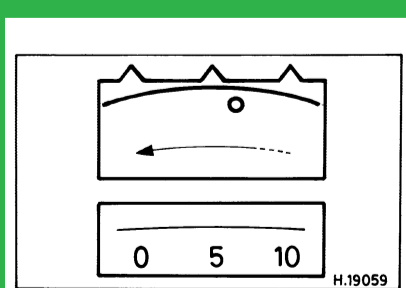
²Combi: -1°10'±30'. PU: -40'±30'

³NUTS: 65 + 40° + 40°

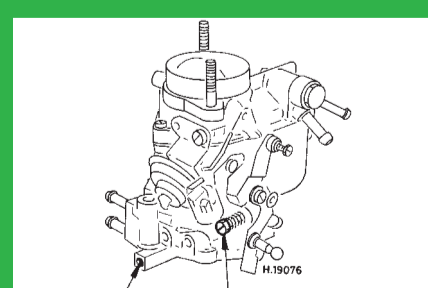
1: Idle speed 2: CO / Mixture



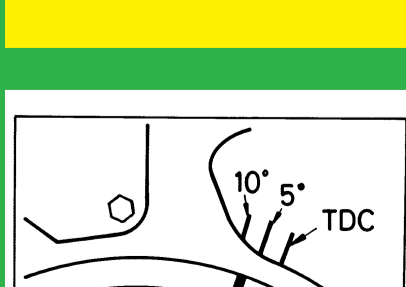
1116 cm³



1116 cm³



Weber ICEV



1116 cm³, alternative