

Engine & Cooling	Fuel	Ignition	Electrical	Running gear	Torque settings	Capacities	Notes & Illustrations
------------------	------	----------	------------	--------------	-----------------	------------	-----------------------



Automotive Technical DATA BOOK

Click on one of the buttons above to view data for this car. To return to this screen and make another choice, click anywhere on the data screen.

MENU

HELP

Engine and cooling system Panda 750 & Van 1986 to 1992

Type		156 A4.000 (FIRE) OHC 25kW
Capacity (cm ³) / number of cylinders		769 / 4
Compression ratio / pressure	bar	9.4±0.2 / _
Oil pressure	bar	[2.9 to 3.9]
Oil temperature	°C	100
Valve clearance - inlet	mm	0.30±0.05
Valve clearance - exhaust	mm	0.40±0.05
Firing order		1-3-4-2
No 1 cylinder position		TBE
Thermostat opening temperature	°C	85 to 89
Radiator cap pressure	bar	0.98

Fuel system Panda 750 & Van 1986 to 1992

Idle speed - manual [auto]	rpm	750 to 800
Fast idle speed - manual [auto]	rpm	_
CO @ idle speed [3000 rpm] - see page VI	%	1.5±0.5
HC @ idle speed [3000 rpm] - see page VI	ppm	≤1200
CO ₂ @ idle speed [3000 rpm] - see page VI	%	_
O ₂ @ idle speed [3000 rpm] - see page VI	%	_
Carburettor / fuel injection		Weber
Type / ref		32 TLF 11/250. Van: 11/253
Main jet / needle		105
Injection pressure	bar	_
Pump pressure	bar	≥0.20
Octane rating	RON	98[E 95 RON]

Ignition system Panda 750 & Van 1986 to 1992

Type		Contact breaker - CIS
Ignition coil		Marelli. Bosch. Klitz. Iskra.
Primary resistance	ohms	2.6 to 3.4 (typical)
Ballast resistor	ohms	_
Voltage - Tmnl 15(+) to earth	V	_
Distributor		Marelli
Points gap (air gap)	mm	0.45
Dwell angle	° (%)	53±2
Condenser capacity	µF	0.20 to 0.25
Rotation		Clockwise
Ignition timing - basic [static	° Crankshaft @ rpm	15±1 [AT: 2] BTDC @ idle
V = Vacuum NV = No Vacuum		V
Total ignition advance	° Crankshaft @ rpm	_
	° Crankshaft @ rpm	_
	° Crankshaft @ rpm	_
Centrifugal check.	° Crankshaft @ rpm	0 @ 800 to 1200
	° Crankshaft @ rpm	17 to 21 @ 3000
	° Crankshaft @ rpm	26 to 30 @ 4300
Vacuum range check	mbar	133 to 307
Maximum vacuum advance	° Crankshaft	12 to 14
Spark plugs		Bosch/Champion
Type		FR7DC / RC9YC
Electrode gap	mm	0.70 to 0.80

Electrical system Panda 750 & Van 1986 to 1992

Battery	V / CC / RC	12 / 175 / 60 (30Ah)
Alternator voltage / full load current / engine rpm		14.0 to 14.3 / 45 / 3500
Starter motor current / voltage - cranking	A / V	180 / 9.1
- locked	A / V	320 / 7

Running gear Panda 750 & Van 1986 to 1992

Brakes -		
Front (min. friction material thickness)	mm	1.5
Rear (min. friction material thickness)	mm	1.5

Tyres		
Saloon	Size	135x13: 155/65x13
Estate / Van	Size	135x13
Pressure - front / rear - Saloon	bar	1.8 / 2.0'
- Estate / Van	bar	1.8 / 2.0

Front suspension / wheel alignment

Toe-in (+) / Toe-out (-)	mm [°]	-2.0±2.0
Camber		+1°±30'
Castor		+2°30'±30'
King pin inclination		_

Rear suspension / wheel alignment

Toe-in (+) / Toe-out (-)	mm [°]	0
Camber		0

Torque wrench settings Panda 750 & Van 1986 to 1992

Cylinder head - stage 1	Nm	30
- stage 2	Nm	+ 90°
Cylinder head - stage 3	Nm	+ 90°
- stage 4	Nm	_
Big-end bearings	Nm	41
Main bearings	Nm	40 + 90°
Clutch cover	Nm	16
Flywheel [driveplate]	Nm	44
Front hubs	Nm	216
Rear hubs	Nm	216
Wheel nuts / bolts	Nm	86
Spark plugs	Nm	25 to 30

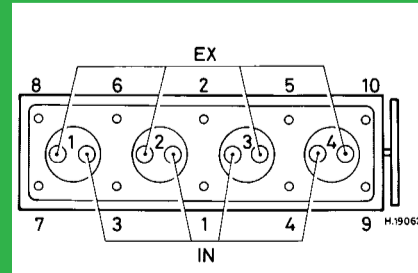
Capacities Panda 750 & Van 1986 to 1992

Engine oil & filter	litres	3.9
Gearbox - 4-speed [5-speed]	litres	2.4
Automatic transmission - refill	litres	_
Final drive	litres	WT
Cooling system	litres	5.2
Fuel tank	litres	40

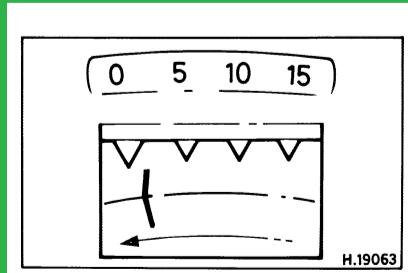
Notes and Illustrations

¹155/65x13: 2.2 / 2.2

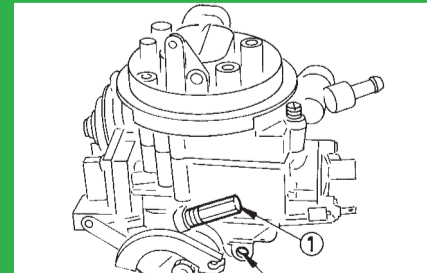
1: Idle speed 2: CO / Mixture



769 cm³OHC



769 cm³OHC



Weber 32 TLF