

Engine & Cooling	Fuel	Ignition	Electrical	Running gear	Torque settings	Capacities	Notes & Illustrations
------------------	------	----------	------------	--------------	-----------------	------------	-----------------------



Automotive Technical DATA BOOK

Click on one of the buttons above to view data for this car. To return to this screen and make another choice, click anywhere on the data screen.

MENU

HELP

Engine and cooling system Mini 1000 (LC) 1989 to 1992

Type		99HE22 OHV
Capacity (cm ³) / number of cylinders		998 / 4
Compression ratio / pressure	bar	8.3 / _
Oil pressure	bar	1.0 [4.1]
Oil temperature	°C	_
Valve clearance - inlet	mm	0.28 to 0.33
Valve clearance - exhaust	mm	0.28 to 0.33
Firing order		1-3-4-2
No 1 cylinder position		TCE
Thermostat opening temperature	°C	88
Radiator cap pressure	bar	1.04

Fuel system Mini 1000 (LC) 1989 to 1992

Idle speed - manual [auto]	rpm	750±50
Fast idle speed - manual [auto]	rpm	1100±50
CO @ idle speed [3000 rpm] - see page VI	%	2.5±1.0
HC @ idle speed [3000 rpm] - see page VI	ppm	≤1200
CO ₂ @ idle speed [3000 rpm] - see page VI	%	_
O ₂ @ idle speed [3000 rpm] - see page VI	%	_
Carburettor / fuel injection		SU
Type / ref		HS4 / FZX 1146
Main jet / needle		0.090 / ADE
Injection pressure	bar	_
Pump pressure	bar	_
Octane rating	RON	95[E 91 RON]

Ignition system Mini 1000 (LC) 1989 to 1992

Type		Contact breaker - CIS
Ignition coil		Unipart GCL 144
Primary resistance	ohms	1.4±0.1
Ballast resistor	ohms	1.5
Voltage - Tmnl 15(+) to earth	V	6.0 to 8.0
Distributor		Lucas
Points gap (air gap)	mm	0.38±0.03
Dwell angle	° (%)	54±5
Condenser capacity	µF	0.18 to 0.25
Rotation		Anticlockwise
Ignition timing - basic [static	° Crankshaft @ rpm	8+0-2 BTDC @ 1500
V = Vacuum NV = No Vacuum		NV
Total ignition advance	° Crankshaft @ rpm	_
	° Crankshaft @ rpm	_
	° Crankshaft @ rpm	_
Centrifugal check.	° Crankshaft @ rpm	8 to 12 @ 1600
	° Crankshaft @ rpm	16 to 20 @ 2500
	° Crankshaft @ rpm	23 to 27 @ 4800
Vacuum range check	mbar	68 to 440
Maximum vacuum advance	° Crankshaft	24
Spark plugs		Unipart/Champion
Type		GSP 4382 / N12YC
Electrode gap	mm	0.65

Electrical system Mini 1000 (LC) 1989 to 1992

Battery	V / CC / RC	12 / 30,40Ah
Alternator voltage / full load current / engine rpm		13.6 to 14.4 / _ / 3000
Starter motor current / voltage - cranking	A / V	50 / 12
- locked	A / V	360 / 7.0

Running gear Mini 1000 (LC) 1989 to 1992

Brakes -		
Front (min. friction material thickness)	mm	3.0
Rear (min. friction material thickness)	mm	3.0
Tyres		
Saloon	Size	145/70x12
Estate / Van	Size	_
Pressure - front / rear - Saloon	bar	1.9 / 1.9
- Estate / Van	bar	_
Front suspension / wheel alignment		
Toe-in (+) / Toe-out (-)	mm [°]	-1.6
Camber		+2°±1°
Castor		+3°±1°
King pin inclination		_
Rear suspension / wheel alignment		
Toe-in (+) / Toe-out (-)	mm [°]	+3.2
Camber		+1°+1°30'-30'

Torque wrench settings Mini 1000 (LC) 1989 to 1992

Cylinder head - stage 1	Nm	34
- stage 2	Nm	68
Cylinder head - stage 3	Nm	_
- stage 4	Nm	_
Big-end bearings	Nm	Bolts: 50. Nuts: 45
Main bearings	Nm	85
Clutch cover	Nm	25
Flywheel [driveplate]	Nm	Centre bolt: 152
Front hubs	Nm	2 hole shaft: 203 ¹
Rear hubs	Nm	81
Wheel nuts / bolts	Nm	63
Spark plugs	Nm	25

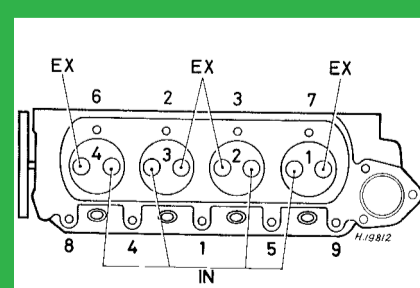
Capacities Mini 1000 (LC) 1989 to 1992

Engine oil & filter	litres	4.8
Gearbox - 4-speed [5-speed]	litres	With engine
Automatic transmission - refill	litres	_
Final drive	litres	With engine
Cooling system	litres	3.6
Fuel tank	litres	34

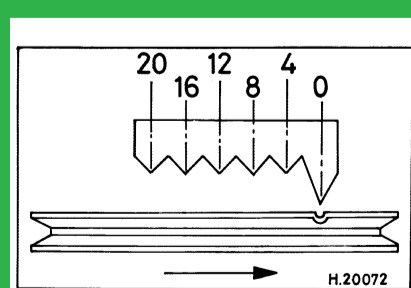
Notes and Illustrations

¹1 hole shaft: 262

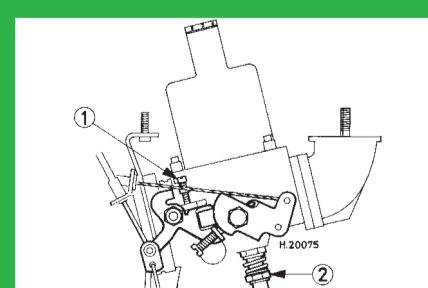
1: Idle speed 2: CO / Mixture



998 cm³



998 cm³



SU HS4