

Engine & Cooling   Fuel   Ignition   Electrical   Running gear   Torque settings   Capacities   Notes & Illustrations



# Automotive Technical DATA BOOK

Click on one of the buttons above to view data for this car. To return to this screen and make another choice, click anywhere on the data screen.

MENU

HELP

## Engine and cooling system 900i 16V CAT 1990 to 1993

Type	B202i DOHC 16V	
Capacity (cm <sup>3</sup> ) / number of cylinders	1985 / 4	
Compression ratio / pressure	bar	10.0 / _
Oil pressure	bar	[3.0]
Oil temperature	°C	80
Valve clearance - inlet	mm	0: Hyd.
- exhaust	mm	0: Hyd.
Firing order	1-3-4-2	
No 1 cylinder position	R	
Thermostat opening temperature	°C	89±2
Radiator cap pressure	bar	0.9 to 1.2

## Fuel system 900i 16V CAT 1990 to 1993

Idle speed - manual [auto]	rpm	850±50
Fast idle speed - manual [auto]	rpm	_
CO @ idle speed [3000 rpm] - see page VI	%	0.5 to 1.5
HC @ idle speed [3000 rpm] - see page VI	ppm	≤1200
CO <sub>2</sub> @ idle speed [3000 rpm] - see page VI	%	_
O <sub>2</sub> @ idle speed [3000 rpm] - see page VI	%	_
Carburettor / fuel injection	Bosch	
Type / ref	LH-Jetronic	
Main jet / needle	_	
Injection pressure	bar	_
Pump pressure	bar	2.5
Octane rating	RON	91[U]

## Ignition system 900i 16V CAT 1990 to 1993

Type	Electronic - Hall effect	
Ignition coil	Bosch	
Primary resistance	ohms	0.52 to 0.76
Ballast resistor	ohms	_
Voltage - Tmnl 15(+) to earth	V	_
Distributor	Bosch	
Points gap (air gap)	mm	[≥0.25]
Dwell angle	° (%)	_
Condenser capacity	µF	_
Rotation	Anticlockwise	
Ignition timing - basic [static	° Crankshaft @ rpm	14 BTDC @ 850
V = Vacuum NV = No Vacuum	NV	
Total ignition advance	° Crankshaft @ rpm	_
	° Crankshaft @ rpm	_
	° Crankshaft @ rpm	_
Centrifugal check.	° Crankshaft @ rpm	Computer control
	° Crankshaft @ rpm	_
	° Crankshaft @ rpm	_
Vacuum range check	mbar	Computer control
Maximum vacuum advance	° Crankshaft	_
Spark plugs	NGK/Champion	
Type	BCP5EV / C7GY	
Electrode gap	mm	0.60

## Electrical system 900i 16V CAT 1990 to 1993

Battery	V / CC / RC	12 / 60Ah
Alternator voltage / full load current / engine rpm	14.0 / 70, 80 / 2700	
Starter motor current / voltage - cranking	A / V	205 to 315 / 9.0
- locked	A / V	450 to 750 / 4.0 to 6.0

## Running gear 900i 16V CAT 1990 to 1993

<b>Brakes -</b>		
Front (min. friction material thickness)	mm	1.0
Rear (min. friction material thickness)	mm	1.0

<b>Tyres</b>		
Saloon	Size	185/65x15
Estate / Van	Size	_
Pressure - front / rear - Saloon	bar	2.2 / 2.2
- Estate / Van	bar	_

<b>Front suspension / wheel alignment</b>		
Toe-in (+) / Toe-out (-)	mm [°]	+2.0±1.0
Camber	+0.5°±0.5°	
Castor	+2°±0.5°	
King pin inclination	+11.5°±1°	

<b>Rear suspension / wheel alignment</b>		
Toe-in (+) / Toe-out (-)	mm [°]	+4.0±2.0
Camber	-0.5°±0.25°	

## Torque wrench settings 900i 16V CAT 1990 to 1993

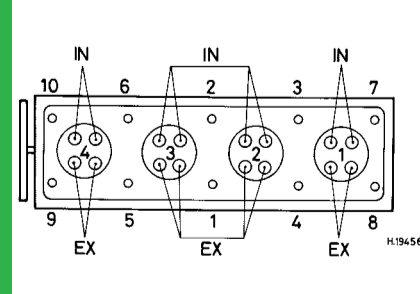
Cylinder head - stage 1	Nm	60
- stage 2	Nm	80
- stage 3	Nm	+ 90°
- stage 4	Nm	_
Big-end bearings	Nm	55
Main bearings	Nm	110
Clutch cover	Nm	22±2
Flywheel [driveplate]	Nm	60
Front hubs	Nm	290 to 310
Rear hubs	Nm	290 to 310
Wheel nuts / bolts	Nm	105 to 125
Spark plugs	Nm	28

## Capacities 900i 16V CAT 1990 to 1993

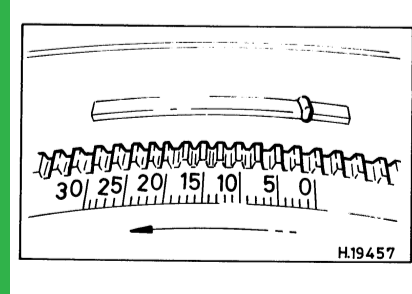
Engine oil & filter	litres	3.8
Gearbox - 4-speed [5-speed]	litres	3.0
Automatic transmission - refill	litres	2.5 to 3.0
Final drive	litres	AT: 1.4
Cooling system	litres	10.0
Fuel tank	litres	68

## Notes and Illustrations

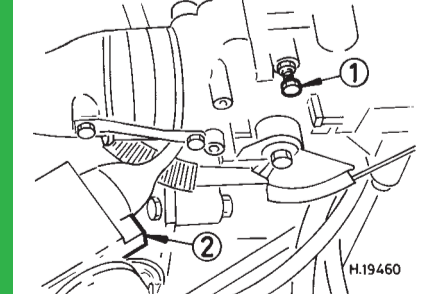
1: Idle speed    2: CO / Mixture



1985 cm<sup>3</sup>, 16V



1985 cm<sup>3</sup>, 16V



LH-Jetronic