

Engine & Cooling	Fuel	Ignition	Electrical	Running gear	Torque settings	Capacities	Notes & Illustrations
------------------	------	----------	------------	--------------	-----------------	------------	-----------------------



# Automotive Technical DATA BOOK

Click on one of the buttons above to view data for this car. To return to this screen and make another choice, click anywhere on the data screen.

MENU

HELP

## Engine and cooling system 9000 Turbo 16 1985 to 1993

Type	B202 DOHC 16V turbo 129kW	
Capacity (cm <sup>3</sup> ) / number of cylinders	1985 / 4	
Compression ratio / pressure	bar	9.0 / _
Oil pressure	bar	[2.7]
Oil temperature	°C	80
Valve clearance - inlet	mm	0: Hyd.
- exhaust	mm	0: Hyd.
Firing order	1-3-4-2	
No 1 cylinder position	TCE	
Thermostat opening temperature	°C	89±2
Radiator cap pressure	bar	0.9 to 1.2

## Fuel system 9000 Turbo 16 1985 to 1993

Idle speed - manual [auto]	rpm	850±75
Fast idle speed - manual [auto]	rpm	_
CO @ idle speed [3000 rpm] - see page VI	%	0.9 to 1.6
HC @ idle speed [3000 rpm] - see page VI	ppm	≤1200
CO <sub>2</sub> @ idle speed [3000 rpm] - see page VI	%	_
O <sub>2</sub> @ idle speed [3000 rpm] - see page VI	%	_
Carburettor / fuel injection	Bosch	
Type / ref	LH2.2-Jetronic. 91 ▶: 2.4.2	
Main jet / needle	_	
Injection pressure	bar	2.5±0.15: 87 ▶: 2.8
Pump pressure	bar	_
Octane rating	RON	91[E] <sup>1</sup>

## Ignition system 9000 Turbo 16 1985 to 1993

Type	Electronic - Hall effect	
Ignition coil	Bosch	
Primary resistance	ohms	0.52 to 0.76
Ballast resistor	ohms	_
Voltage - Tmnl 15(+) to earth	V	_
Distributor	Bosch	
Points gap (air gap)	mm	_
Dwell angle	° (%)	_
Condenser capacity	µF	_
Rotation	Anticlockwise	
Ignition timing - basic [static	° Crankshaft @ rpm	16 BTDC @ 850
V = Vacuum NV = No Vacuum	NV	
Total ignition advance	° Crankshaft @ rpm	_
	° Crankshaft @ rpm	_
	° Crankshaft @ rpm	_
Centrifugal check.	° Crankshaft @ rpm	Computer control
	° Crankshaft @ rpm	_
	° Crankshaft @ rpm	_
Vacuum range check	mbar	Computer control
Maximum vacuum advance	° Crankshaft	_
Spark plugs	NGK/Champion	
Type	BCP7EV / C7GY	
Electrode gap	mm	0.60 to 0.70

## Electrical system 9000 Turbo 16 1985 to 1993

Battery	V / CC / RC	12 / 60Ah
Alternator voltage / full load current / engine rpm	14.0 to 14.5 /70, 80 / 2500	
Starter motor current / voltage - cranking	A / V	315 / 9.0
- locked	A / V	650 to 750 / 4.0

## Running gear 9000 Turbo 16 1985 to 1993

<b>Brakes -</b>		
Front (min. friction material thickness)	mm	4.0
Rear (min. friction material thickness)	mm	4.0

<b>Tyres</b>		
Saloon	Size	205/55x15:195/65x15:195/60x15
Estate / Van	Size	_
Pressure - front / rear - Saloon	bar	WSM
- Estate / Van	bar	_

## Front suspension / wheel alignment

Toe-in (+) / Toe-out (-)	mm [°]	+1.5±0.5
Camber		-0.65°±0.5°
Castor		+1.65°±0.5°
King pin inclination		+11.3°±0.5°

## Rear suspension / wheel alignment

Toe-in (+) / Toe-out (-)	mm [°]	+2.5±1.5
Camber		-0.25°±0.25°

## Torque wrench settings 9000 Turbo 16 1985 to 1993

Cylinder head - stage 1	Nm	60
- stage 2	Nm	80
- stage 3	Nm	+90°
- stage 4	Nm	_
Big-end bearings	Nm	55
Main bearings	Nm	110
Clutch cover	Nm	22±2
Flywheel [driveplate]	Nm	60 <sup>1</sup>
Front hubs	Nm	270 to 290
Rear hubs	Nm	270 to 290
Wheel nuts / bolts	Nm	90 to 110
Spark plugs	Nm	25 to 29

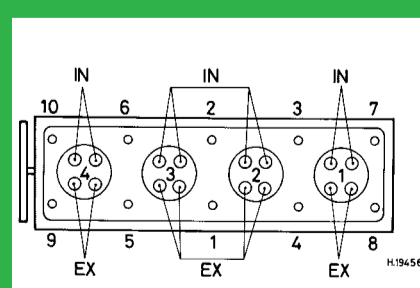
## Capacities 9000 Turbo 16 1985 to 1993

Engine oil & filter	litres	4.2
Gearbox - 4-speed [5-speed]	litres	2.5
Automatic transmission - refill	litres	3.0 to 3.5
Final drive	litres	WT
Cooling system	litres	9.0
Fuel tank	litres	68

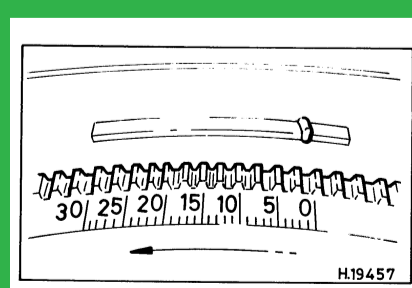
## Notes and Illustrations

<sup>1</sup>19mm head bolts: 85

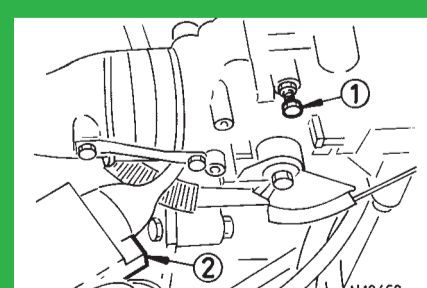
1: Idle speed 2: CO / Mixture



1985 cm<sup>3</sup>, 16V



1985 cm<sup>3</sup>, 16V



LH2.2 / 2.4-Jetronic