

Engine & Cooling	Fuel	Ignition	Electrical	Running gear	Torque settings	Capacities	Notes & Illustrations
------------------	------	----------	------------	--------------	-----------------	------------	-----------------------



Automotive Technical DATA BOOK

Click on one of the buttons above to view data for this car. To return to this screen and make another choice, click anywhere on the data screen.

MENU

HELP

Engine and cooling system 90 & 900 1984 to 1989

Type	B201C (1 carb). B201T (2 carb)	
Capacity (cm ³) / number of cylinders	1985 / 4	
Compression ratio / pressure	bar	9.5 / _
Oil pressure	bar	[3.0]
Oil temperature	°C	80
Valve clearance - inlet	mm	0.20 to 0.25
- exhaust	mm	0.40 to 0.45
Firing order	1-3-4-2	
No 1 cylinder position	R	
Thermostat opening temperature	°C	88
Radiator cap pressure	bar	0.9 to 1.2

Fuel system 90 & 900 1984 to 1989

Idle speed - manual [auto]	rpm	850±50
Fast idle speed - manual [auto]	rpm	1100±50 (175CD: 1350±50)
CO @ idle speed [3000 rpm] - see page VI	%	0.2 to 1.0 ¹
HC @ idle speed [3000 rpm] - see page VI	ppm	≤1200
CO ₂ @ idle speed [3000 rpm] - see page VI	%	_
O ₂ @ idle speed [3000 rpm] - see page VI	%	_
Carburettor / fuel injection	Zenith/Pierburg ²	
Type / ref	2x 150 CD2, 175 CD or SEVX	
Main jet / needle	175CD: B1 DS. 150: B5 EQ ²	
Injection pressure	bar	_
Pump pressure	bar	0.17 to 0.25
Octane rating	RON	97[R]

Ignition system 90 & 900 1984 to 1989

Type	Electronic - Hall effect	
Ignition coil	Bosch	
Primary resistance	ohms	0.52 to 0.76
Ballast resistor	ohms	_
Voltage - Tmnl 15(+) to earth	V	_
Distributor	Bosch	
Points gap (air gap)	mm	_
Dwell angle	° (%)	_
Condenser capacity	µF	_
Rotation	Anticlockwise	
Ignition timing - basic [static	° Crankshaft @ rpm	20 BTDC @ 2000
V = Vacuum NV = No Vacuum	NV	
Total ignition advance	° Crankshaft @ rpm	_
	° Crankshaft @ rpm	_
	° Crankshaft @ rpm	_
Centrifugal check.	° Crankshaft @ rpm	0 to 3 @ 1200
	° Crankshaft @ rpm	14 to 18 @ 3000
	° Crankshaft @ rpm	24 to 28 @ 4200
Vacuum range check	mbar	160 to 480
Maximum vacuum advance	° Crankshaft	18 to 22
Spark plugs	NGK/Champion	
Type	BP6ES / N7YC	
Electrode gap	mm	0.70

Electrical system 90 & 900 1984 to 1989

Battery	V / CC / RC	12 / 62Ah
Alternator voltage / full load current / engine rpm	14.0 / _ / 2700	
Starter motor current / voltage - cranking	A / V	205 to 315 / 9.0
- locked	A / V	450 to 750 / 4.0 to 6.0

Running gear 90 & 900 1984 to 1989

Brakes -		
Front (min. friction material thickness)	mm	1.0
Rear (min. friction material thickness)	mm	1.0

Tyres		
Saloon	Size	165x15: 175/70x15: 185/65x15
Estate / Van	Size	_
Pressure - front / rear - Saloon	bar	2.1 / 2.2 ³
- Estate / Van	bar	_

Front suspension / wheel alignment

Toe-in (+) / Toe-out (-)	mm [°]	+2.0±1.0
Camber	+0.5°±0.5°	
Castor	+1°±0.5° [PAS: +2°±0.5°]	
King pin inclination	+11.5°±1°	

Rear suspension / wheel alignment

Toe-in (+) / Toe-out (-)	mm [°]	+4.0±2.0
Camber	-0.5°±0.25°	

Torque wrench settings 90 & 900 1984 to 1989

Cylinder head - stage 1	Nm	M15 / Torx bolts: 60 ⁴
- stage 2	Nm	90 ⁴
- stage 3	Nm	Warm up, then cool, slacken ⁴
- stage 4	Nm	80 + 90 ⁴
Big-end bearings	Nm	55
Main bearings	Nm	110
Clutch cover	Nm	22±2
Flywheel [driveplate]	Nm	60
Front hubs	Nm	290 to 310
Rear hubs	Nm	290 to 310
Wheel nuts / bolts	Nm	90 to 110
Spark plugs	Nm	28

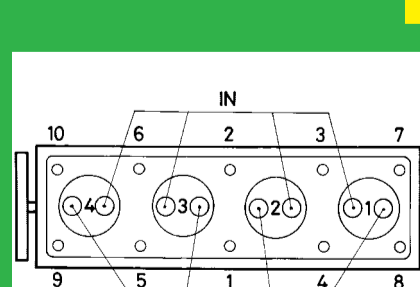
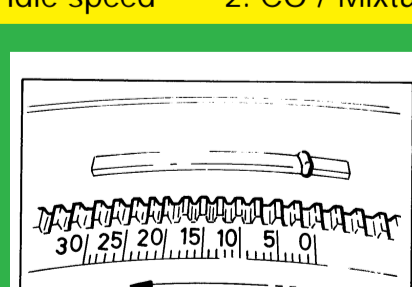
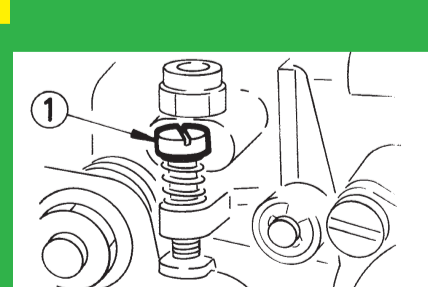
Capacities 90 & 900 1984 to 1989

Engine oil & filter	litres	3.8
Gearbox - 4-speed [5-speed]	litres	2.5 [3.0]
Automatic transmission - refill	litres	2.5 to 3.0
Final drive	litres	AT: 1.4
Cooling system	litres	10.0
Fuel tank	litres	63

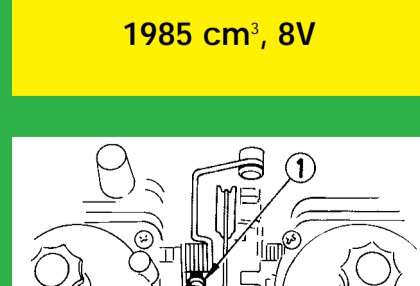
Notes and Illustrations

- ¹1986 ►: 1.4 to 2.0 @ 2000 rpm
²1987 ►: Pierburg 175 CDUS, with YC needle
³185 tyres: 2.0 / 2.1
⁴M15 hex head or M12 Torx head bolts only. M17 bolts: 1) 60, 2) 95, 3) Warm up, then cool down and slacken each bolt in turn, 4) 95

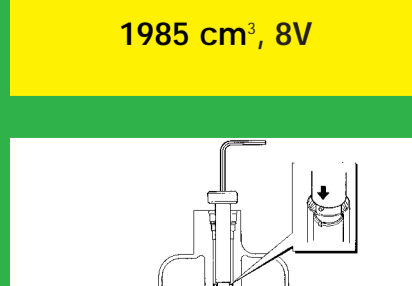
1: Idle speed 2: CO / Mixture

1985 cm³, 8V1985 cm³, 8V

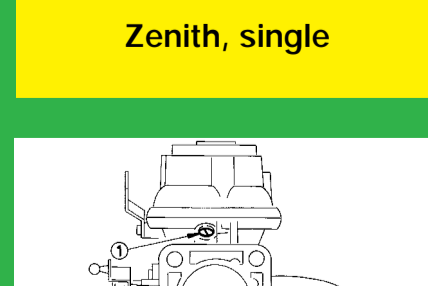
Zenith, single



Zenith, twin



Zenith



Pierburg