

Engine & Cooling

Fuel

Ignition

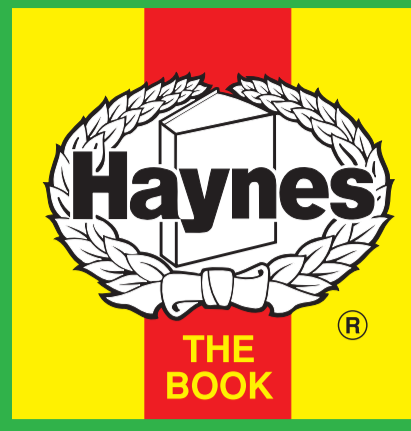
Electrical

Running gear

Torque settings

Capacities

Notes & Illustrations



Automotive Technical DATA BOOK

Click on one of the buttons above to view data for this car. To return to this screen and make another choice, click anywhere on the data screen.

MENU

HELP

Engine and cooling system

Penza 1.3 1991 to 1994

Type		B3 SOHC 48kW
Capacity (cm ³) / number of cylinders		1324 / 4
Compression ratio / pressure	bar	9.4 / ≥9.7
Oil pressure	bar	[3.5 to 4.4]
Oil temperature	°C	80
Valve clearance - inlet	mm	0: Hyd.
- exhaust	mm	0: Hyd.
Firing order		1-3-4-2
No 1 cylinder position		TBE
Thermostat opening temperature	°C	82
Radiator cap pressure	bar	0.76 to 1.04

Fuel system

Penza 1.3 1991 to 1994

Idle speed - manual [auto]	rpm	850±50
Fast idle speed - manual [auto]	rpm	—
CO @ idle speed [3000 rpm] - see page VI	%	≤0.5 WSM
HC @ idle speed [3000 rpm] - see page VI	ppm	≤200
CO ₂ @ idle speed [3000 rpm] - see page VI	%	—
O ₂ @ idle speed [3000 rpm] - see page VI	%	—
Carburettor / fuel injection		Aisan
Type / ref		28-32 2V downdraught
Main jet / needle		91, 156
Injection pressure	bar	—
Pump pressure	bar	0.28 to 0.35
Octane rating	RON	91[E 91 RON]

Ignition system

Penza 1.3 1991 to 1994

Type		Electronic
Ignition coil		—
Primary resistance	ohms	3.1
Ballast resistor	ohms	—
Voltage - Tmnl 15(+) to earth	V	—
Distributor		—
Points gap (air gap)	mm	—
Dwell angle	° (%)	—
Condenser capacity	µF	—
Rotation		Anticlockwise
Ignition timing - basic [static	° Crankshaft @ rpm	0±1 BTDC @ idle
V = Vacuum NV = No Vacuum		NV
Total ignition advance	° Crankshaft @ rpm	—
	° Crankshaft @ rpm	—
	° Crankshaft @ rpm	—
Centrifugal check.	° Crankshaft @ rpm	0 @ 1300
	° Crankshaft @ rpm	20 @ 3500
	° Crankshaft @ rpm	19 @ 6000
Vacuum range check	mbar	240 to 640
Maximum vacuum advance	° Crankshaft	22
Spark plugs		NGK/Champion
Type		BPR5ES / RN9YC
Electrode gap	mm	0.75 to 0.85

Electrical system

Penza 1.3 1991 to 1994

Battery	V / CC / RC	12 / 150 / 55
Alternator voltage / full load current / engine rpm		14.1 to 14.7 / 55 / 2500
Starter motor current / voltage - cranking	A / V	60 / 11.5 (no load)
- locked	A / V	—

Running gear

Penza 1.3 1991 to 1994

Brakes -		
Front (min. friction material thickness)	mm	2.0
Rear (min. friction material thickness)	mm	1.0

Tyres		
Saloon	Size	155x13: 175/70x13
Estate / Van	Size	—
Pressure - front / rear - Saloon	bar	1.9 / 1.9
- Estate / Van	bar	—

Front suspension / wheel alignment		
Toe-in (+) / Toe-out (-)	mm [°]	+2.0±3.0
Camber		+48'±45'
Castor		+1°35'±45'
King pin inclination		+12°22'

Rear suspension / wheel alignment		
Toe-in (+) / Toe-out (-)	mm [°]	0±3.0
Camber		0±45'

Torque wrench settings

Penza 1.3 1991 to 1994

Cylinder head - stage 1	Nm	76 to 81
- stage 2	Nm	—
- stage 3	Nm	—
- stage 4	Nm	—
Big-end bearings	Nm	50 to 55
Main bearings	Nm	54 to 59
Clutch cover	Nm	18 to 26
Flywheel [driveplate]	Nm	96 to 103
Front hubs	Nm	157 to 236
Rear hubs	Nm	WSM
Wheel nuts / bolts	Nm	118
Spark plugs	Nm	15 to 23

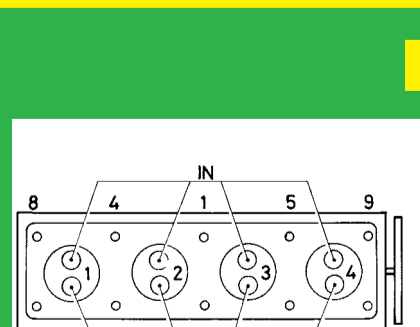
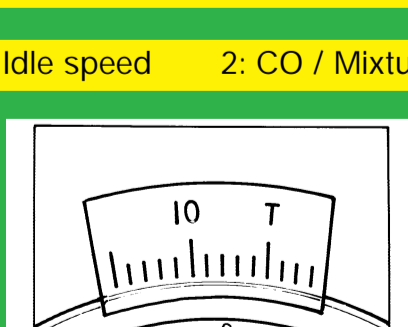
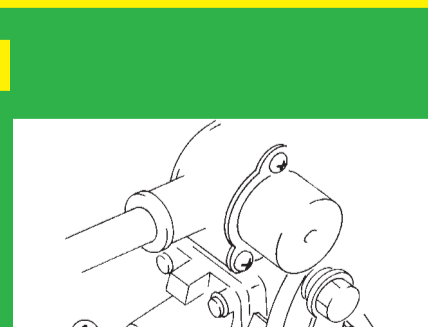
Capacities

Penza 1.3 1991 to 1994

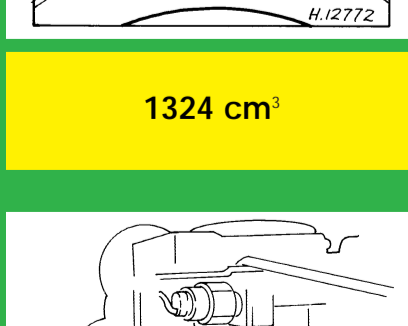
Engine oil & filter	litres	3.4
Gearbox - 4-speed [5-speed]	litres	3.2
Automatic transmission - refill	litres	—
Final drive	litres	WT
Cooling system	litres	5.0
Fuel tank	litres	57

Notes and Illustrations

1: Idle speed 2: CO / Mixture

1324 cm³1324 cm³

Aisan 28-32



Aisan 28-32