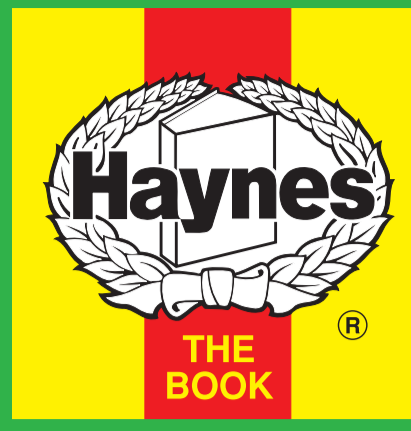


Engine & Cooling	Fuel	Ignition	Electrical	Running gear	Torque settings	Capacities	Notes & Illustrations
------------------	------	----------	------------	--------------	-----------------	------------	-----------------------



# Automotive Technical DATA BOOK

Click on one of the buttons above to view data for this car. To return to this screen and make another choice, click anywhere on the data screen.

MENU

HELP

## Engine and cooling system Marbella 900 1988 to 1992

Type		09NCA
Capacity (cm <sup>3</sup> ) / number of cylinders		903 / 4
Compression ratio / pressure	bar	8.5 / _
Oil pressure	bar	[2.9 to 3.9]
Oil temperature	°C	100
Valve clearance - inlet	mm	0.15±0.05
- exhaust	mm	0.20±0.05
Firing order		1-3-4-2
No 1 cylinder position		TCE
Thermostat opening temperature	°C	85
Radiator cap pressure	bar	1.0

## Fuel system Marbella 900 1988 to 1992

Idle speed - manual [auto]	rpm	850±50
Fast idle speed - manual [auto]	rpm	_
CO @ idle speed [3000 rpm] - see page VI	%	2.0 to 3.0
HC @ idle speed [3000 rpm] - see page VI	ppm	≤1200
CO <sub>2</sub> @ idle speed [3000 rpm] - see page VI	%	_
O <sub>2</sub> @ idle speed [3000 rpm] - see page VI	%	_
Carburettor / fuel injection		Bressel-Weber/Solex
Type / ref		B-W: 32 ICEV. Sol: C32 DISA
Main jet / needle		B-W: 112. Solex: 117
Injection pressure	bar	_
Pump pressure	bar	0.2 to 0.3
Octane rating	RON	92[E 95 RON]

## Ignition system Marbella 900 1988 to 1992

Type		Contact breaker - CIS
Ignition coil		Marelli BE200B. Femsa K12V
Primary resistance	ohms	2.6 to 3.3 (typical)
Ballast resistor	ohms	_
Voltage - Tmnl 15(+) to earth	V	_
Distributor		Ducellier/Marelli <sup>1</sup>
Points gap (air gap)	mm	0.40
Dwell angle	° (%)	55±3 (61±3)
Condenser capacity	µF	0.25±0.025
Rotation		Clockwise
Ignition timing - basic [static	° Crankshaft @ rpm	5 BTDC @ 850±50
V = Vacuum NV = No Vacuum		NV
Total ignition advance	° Crankshaft @ rpm	44±4 BTDC @ 4750
	° Crankshaft @ rpm	_
	° Crankshaft @ rpm	_
Centrifugal check.	° Crankshaft @ rpm	10±2 @ 2000
	° Crankshaft @ rpm	20±2 @ 3000
	° Crankshaft @ rpm	32±2 @ 4750
Vacuum range check	mbar	133 to 333
Maximum vacuum advance	° Crankshaft	12±2
Spark plugs		Bosch/Champion
Type		WR7DC / RN9YC
Electrode gap	mm	0.70 to 0.80

## Electrical system Marbella 900 1988 to 1992

Battery	V / CC / RC	12 / 32Ah
Alternator voltage / full load current / engine rpm		14.0 / _ / 3000
Starter motor current / voltage - cranking	A / V	_
- locked	A / V	310 to 360 / 6.6 to 7.2

## Running gear Marbella 900 1988 to 1992

<b>Brakes -</b>		
Front (min. friction material thickness)	mm	1.5
Rear (min. friction material thickness)	mm	1.5

<b>Tyres</b>		
Saloon	Size	135x13: 145/70x13
Estate / Van	Size	_
Pressure - front / rear - Saloon	bar	GL: 1.8 / 2.0 <sup>2</sup>
- Estate / Van	bar	_

## Front suspension / wheel alignment

Toe-in (+) / Toe-out (-)	mm [°]	0 to -4.0
Camber		+1°30'±30'
Castor		+3°±30'
King pin inclination		_

## Rear suspension / wheel alignment

Toe-in (+) / Toe-out (-)	mm [°]	_
Camber		_

## Torque wrench settings Marbella 900 1988 to 1992

Cylinder head - stage 1	Nm	30
- stage 2	Nm	59
- stage 3	Nm	_
- stage 4	Nm	_
Big-end bearings	Nm	51
Main bearings	Nm	80
Clutch cover	Nm	16
Flywheel [driveplate]	Nm	85
Front hubs	Nm	196
Rear hubs	Nm	57
Wheel nuts / bolts	Nm	86
Spark plugs	Nm	32

## Capacities Marbella 900 1988 to 1992

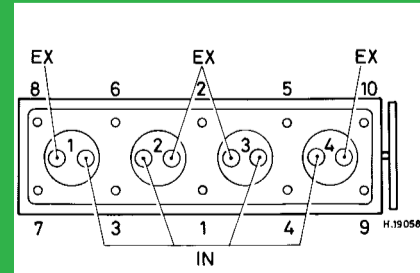
Engine oil & filter	litres	3.6
Gearbox - 4-speed [5-speed]	litres	2.4
Automatic transmission - refill	litres	_
Final drive	litres	WT
Cooling system	litres	5.2
Fuel tank	litres	35

## Notes and Illustrations

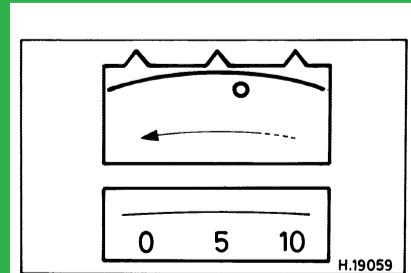
<sup>1</sup>Femsa may also be fitted

<sup>2</sup>GLX: 1.9 / 2.0

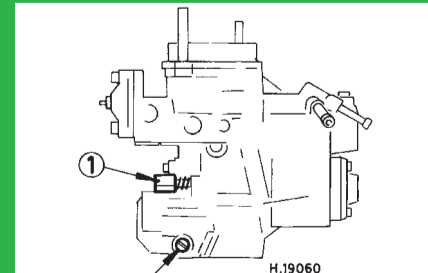
1: Idle speed      2: CO / Mixture



903 cm<sup>3</sup>



903 cm<sup>3</sup>



32 ICEV / C32 DISA