

Engine & Cooling	Fuel	Ignition	Electrical	Running gear	Torque settings	Capacities	Notes & Illustrations
------------------	------	----------	------------	--------------	-----------------	------------	-----------------------



Automotive Technical DATA BOOK

Click on one of the buttons above to view data for this car. To return to this screen and make another choice, click anywhere on the data screen.

MENU

HELP

Engine and cooling system L-Series 1600 DL 1985 to 1993

Type		EA71 OHV
Capacity (cm ³) / number of cylinders		1595 / 4
Compression ratio / pressure	bar	9.0 / 10.8
Oil pressure	bar	2.5 [3.9]
Oil temperature	°C	75 to 85
Valve clearance - inlet	mm	0.23 to 0.27
- exhaust	mm	0.33 to 0.37
Firing order		1-3-2-4
No 1 cylinder position		FR
Thermostat opening temperature	°C	83.5 to 86.5
Radiator cap pressure	bar	0.88±0.10

Fuel system L-Series 1600 DL 1985 to 1993

Idle speed - manual [auto]	rpm	800±50
Fast idle speed - manual [auto]	rpm	—
CO @ idle speed [3000 rpm] - see page VI	%	1.0±0.5
HC @ idle speed [3000 rpm] - see page VI	ppm	≤1200
CO ₂ @ idle speed [3000 rpm] - see page VI	%	—
O ₂ @ idle speed [3000 rpm] - see page VI	%	—
Carburettor / fuel injection		Hitachi
Type / ref		DCX 328 or DCZ 328
Main jet / needle		109, 150
Injection pressure	bar	—
Pump pressure	bar	0.18 to 0.23
Octane rating	RON	91[E 91 RON]

Ignition system L-Series 1600 DL 1985 to 1993

Type		Electronic
Ignition coil		Diamond Electric E019
Primary resistance	ohms	1.035 to 1.265
Ballast resistor	ohms	—
Voltage - Tmnl 15(+) to earth	V	—
Distributor		Hitachi
Points gap (air gap)	mm	[0.30 to 0.50]
Dwell angle	° (%)	—
Condenser capacity	µF	—
Rotation		Anticlockwise
Ignition timing - basic [static	° Crankshaft @ rpm	8 BTDC @ 800
V = Vacuum NV = No Vacuum		NV
Total ignition advance	° Crankshaft @ rpm	—
	° Crankshaft @ rpm	—
	° Crankshaft @ rpm	—
Centrifugal check.	° Crankshaft @ rpm	0 @ 1200
	° Crankshaft @ rpm	23 @ 5000
	° Crankshaft @ rpm	—
Vacuum range check	mbar	133 to 533
Maximum vacuum advance	° Crankshaft	22
Spark plugs		NGK/Champion
Type		BPR6ES / RN9YC
Electrode gap	mm	0.70 to 0.80

Electrical system L-Series 1600 DL 1985 to 1993

Battery	V / CC / RC	12 / 306 / 78
Alternator voltage / full load current / engine rpm		12.0 / _ / 2500
Starter motor current / voltage - cranking	A / V	270 / 9.5
- locked	A / V	600 / 7.7

Running gear L-Series 1600 DL 1985 to 1993

Brakes -		
Front (min. friction material thickness)	mm	—
Rear (min. friction material thickness)	mm	—
Tyres		
Saloon	Size	155x13: 175/70x13
Estate / Van	Size	155x13: 175/70x13
Pressure - front / rear - Saloon	bar	2.0 / 2.0
- Estate / Van	bar	2.0 / 2.0
Front suspension / wheel alignment		
Toe-in (+) / Toe-out (-)	mm [°]	+2.0±3.0
Camber		+45'. Estate: +1°±45'
Castor		+2°30'. Estate +2°5'±45'
King pin inclination		+12°50'
Rear suspension / wheel alignment		
Toe-in (+) / Toe-out (-)	mm [°]	0±3.0
Camber		0±45'

Torque wrench settings L-Series 1600 DL 1985 to 1993

Cylinder head - stage 1	Nm	29
- stage 2	Nm	59
- stage 3	Nm	64
- stage 4	Nm	—
Big-end bearings	Nm	22 to 27
Main bearings	Nm	34 to 44
Clutch cover	Nm	16
Flywheel [driveplate]	Nm	41 to 45 ¹
Front hubs	Nm	196
Rear hubs	Nm	WSM
Wheel nuts / bolts	Nm	78 to 98
Spark plugs	Nm	20 to 29

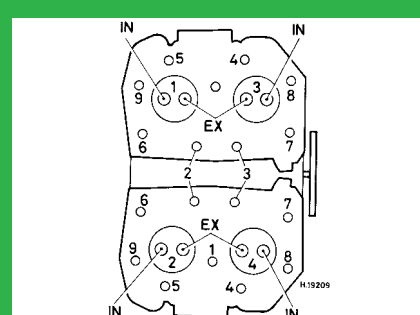
Capacities L-Series 1600 DL 1985 to 1993

Engine oil & filter	litres	3.5
Gearbox - 4-speed [5-speed]	litres	2.6
Automatic transmission - refill	litres	—
Final drive	litres	WT
Cooling system	litres	5.3
Fuel tank	litres	60

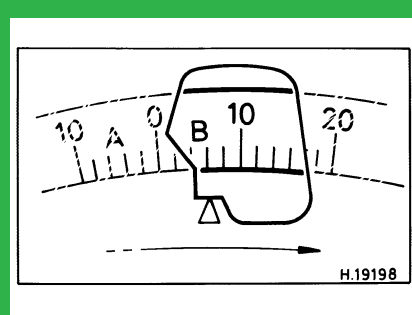
Notes and Illustrations

¹Use locking compound

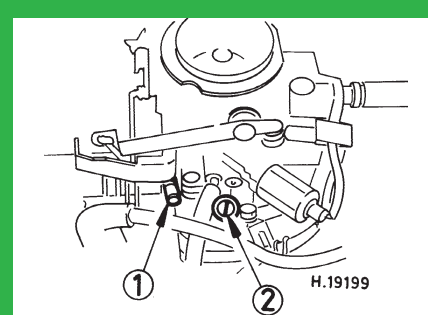
1: Idle speed 2: CO / Mixture



1595 cm³



1595 cm³



Hitachi DCX / DCZ