

Engine & Cooling

Fuel

Ignition

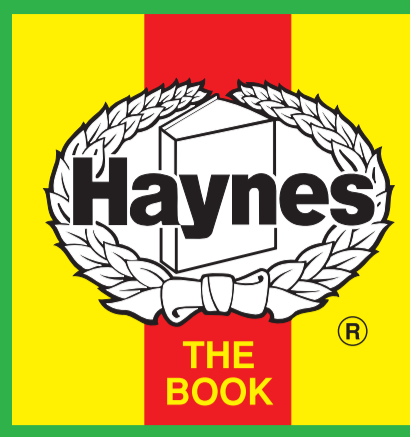
Electrical

Running gear

Torque settings

Capacities

Notes & Illustrations



Automotive Technical DATA BOOK

Click on one of the buttons above to view data for this car. To return to this screen and make another choice, click anywhere on the data screen.

MENU

HELP

Engine and cooling system

Baleno 1.3 1995 to 1997

Type	G13BB SOHC 16V	
Capacity (cm ³) / number of cylinders	1298 / 4	
Compression ratio / pressure	bar	9.5 / ≥11.0
Oil pressure	bar	(3.3 to 4.3)
Oil temperature	°C	80
Valve clearance - inlet	mm	0.13 to 0.17
- exhaust	mm	0.13 to 0.17
Firing order	1-3-4-2	
No 1 cylinder position	TBE	
Thermostat opening temperature	°C	88
Radiator cap pressure	bar	0.90

Fuel system

Baleno 1.3 1995 to 1997

Idle speed - manual [auto]	rpm	750±50
Fast idle speed - manual [auto]	rpm	—
CO @ idle speed [3000 rpm] - see page VI	%	≤0.3 N/A
HC @ idle speed [3000 rpm] - see page VI	ppm	≤200
CO ₂ @ idle speed [3000 rpm] - see page VI	%	—
O ₂ @ idle speed [3000 rpm] - see page VI	%	—
Carburettor / fuel injection	_Suzuki	
Type / ref	MPI	
Main jet / needle	—	
Injection pressure	bar	2.0 to 2.4
Pump pressure	bar	—
Octane rating	RON	95[U]

Ignition system

Baleno 1.3 1995 to 1997

Type	Electronic	
Ignition coil	—	
Primary resistance	ohms	0.86 to 1.06
Ballast resistor	ohms	—
Voltage - Tmnl 15(+) to earth	V	—
Distributor	—	
Points gap (air gap)	mm	[0.2 to 0.4]
Dwell angle	° (%)	—
Condenser capacity	µF	—
Rotation	—	
Ignition timing - basic [static V = Vacuum NV = No Vacuum]	° Crankshaft @ rpm	5° BTDC @ 750±50
Total ignition advance	° Crankshaft @ rpm	Computer control
	° Crankshaft @ rpm	—
	° Crankshaft @ rpm	—
Centrifugal check.	° Crankshaft @ rpm	Computer control
	° Crankshaft @ rpm	—
	° Crankshaft @ rpm	—
Vacuum range check	mbar	Computer control
Maximum vacuum advance	° Crankshaft	—
Spark plugs	Nippon Denso/NGK	
Type	K20PR-U / BKR6E	
Electrode gap	mm	0.70 to 0.80

Electrical system

Baleno 1.3 1995 to 1997

Battery	V / CC / RC	12 / 28Ah
Alternator voltage / full load current / engine rpm	14.4 / 70	
Starter motor current / voltage - cranking	A / V	300 / 7.7
- locked	A / V	/ 4.0

Running gear

Baleno 1.3 1995 to 1997

Brakes -		
Front (min. friction material thickness)	mm	1.0
Rear (min. friction material thickness)	mm	1.0

Tyres		
Saloon	Size	155/80x13: 175/70x13
Estate / Van	Size	—
Pressure - front / rear - Saloon	bar	2.2:2.0 / 2.2:2.0
- Estate / Van	bar	—

Front suspension / wheel alignment

Toe-in (+) / Toe-out (-)	mm [°]	0.0±2.0
Camber	0°±1°	
Castor	2°42'±2°	
King pin inclination	12°36'±3°	

Rear suspension / wheel alignment

Toe-in (+) / Toe-out (-)	mm [°]	2.0±2.0
Camber	—	

Torque wrench settings

Baleno 1.3 1995 to 1997

Cylinder head - stage 1	Nm	35
- stage 2	Nm	55
- stage 3	Nm	68
- stage 4	Nm	—
Big-end bearings	Nm	35
Main bearings	Nm	54
Clutch cover	Nm	23
Flywheel [driveplate]	Nm	78 (95)
Front hubs	Nm	175
Rear hubs	Nm	175
Wheel nuts / bolts	Nm	85
Spark plugs	Nm	25

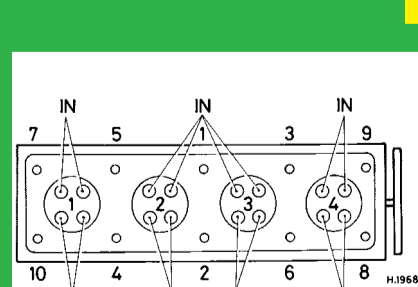
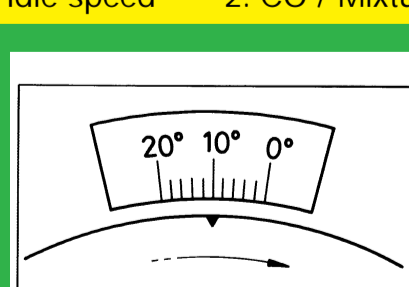
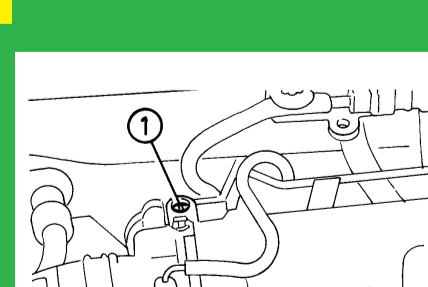
Capacities

Baleno 1.3 1995 to 1997

Engine oil & filter	litres	3.3
Gearbox - 4-speed [5-speed]	litres	2.4
Automatic transmission - refill	litres	—
Final drive	litres	WT Rear: 0.7
Cooling system	litres	3.6
Fuel tank	litres	51

Notes and Illustrations

1: Idle speed 2: CO / Mixture

1298 cm³ 16V1298 cm³ 16V

MPI