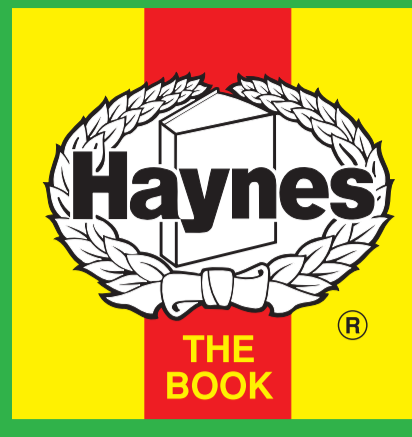


Engine & Cooling	Fuel	Ignition	Electrical	Running gear	Torque settings	Capacities	Notes & Illustrations
------------------	------	----------	------------	--------------	-----------------	------------	-----------------------



Automotive Technical DATA BOOK

Click on one of the buttons above to view data for this car. To return to this screen and make another choice, click anywhere on the data screen.

MENU

HELP

Engine and cooling system Hi-Lux 2WD (YN85) 1989 to 1991

Type		2Y
Capacity (cm ³) / number of cylinders		1812 / 4
Compression ratio / pressure	bar	8.8 / ≥8.8
Oil pressure	bar	[2.5 to 4.9]
Oil temperature	°C	–
Valve clearance - inlet	mm	0: Hyd.
- exhaust	mm	0: Hyd.
Firing order		1-3-4-2
No 1 cylinder position		TCE
Thermostat opening temperature	°C	80 to 84
Radiator cap pressure	bar	0.70 to 1.00

Fuel system Hi-Lux 2WD (YN85) 1989 to 1991

Idle speed - manual [auto]	rpm	700±50. PAS: 800±50
Fast idle speed - manual [auto]	rpm	2600
CO @ idle speed [3000 rpm] - see page VI	%	1.5±0.5
HC @ idle speed [3000 rpm] - see page VI	ppm	≤1200
CO ₂ @ idle speed [3000 rpm] - see page VI	%	–
O ₂ @ idle speed [3000 rpm] - see page VI	%	–
Carburettor / fuel injection		Aisan
Type / ref		2V. 21100-72270
Main jet / needle		–
Injection pressure	bar	–
Pump pressure	bar	–
Octane rating	RON	91[E 95 RON]

Ignition system Hi-Lux 2WD (YN85) 1989 to 1991

Type		Electronic
Ignition coil		–
Primary resistance	ohms	1.3 to 1.6
Ballast resistor	ohms	–
Voltage - Tmnl 15(+) to earth	V	–
Distributor		Toyo Denso
Points gap (air gap)	mm	[0.20 to 0.40]
Dwell angle	° (%)	–
Condenser capacity	µF	–
Rotation		–
Ignition timing - basic [static	° Crankshaft @ rpm	8 BTDC @ idle
V = Vacuum NV = No Vacuum		NV
Total ignition advance	° Crankshaft @ rpm	–
	° Crankshaft @ rpm	–
	° Crankshaft @ rpm	–
Centrifugal check.	° Crankshaft @ rpm	0 @ 1400
	° Crankshaft @ rpm	5.6 @ 2200
	° Crankshaft @ rpm	19 @ 3900
Vacuum range check	mbar	107 to 329
Maximum vacuum advance	° Crankshaft	19
Spark plugs		NGK/Champion
Type		BPR5EY / RN9YC
Electrode gap	mm	0.80

Electrical system Hi-Lux 2WD (YN85) 1989 to 1991

Battery	V / CC / RC	12 / 60Ah
Alternator voltage / full load current / engine rpm		13.8 to 14.8 / _ / 3000
Starter motor current / voltage - cranking	A / V	90 / 11.5 (no load)
- locked	A / V	–

Running gear Hi-Lux 2WD (YN85) 1989 to 1991

Brakes -		
Front (min. friction material thickness)	mm	1.0
Rear (min. friction material thickness)	mm	1.0

Tyres		
Saloon	Size	–
Estate / Van	Size	185x14
Pressure - front / rear - Saloon	bar	–
- Estate / Van	bar	1.8 / 1.8

Front suspension / wheel alignment

Toe-in (+) / Toe-out (-)	mm [°]	+14.4±1.0 ¹
Camber		+41'±30' ²
Castor		+35'±30' ³
King pin inclination		+9°48'±45' ⁴

Rear suspension / wheel alignment

Toe-in (+) / Toe-out (-)	mm [°]	–
Camber		–

Torque wrench settings Hi-Lux 2WD (YN85) 1989 to 1991

Cylinder head - stage 1	Nm	12mm bolt: 19
- stage 2	Nm	14mm bolt: 88
- stage 3	Nm	–
- stage 4	Nm	–
Big-end bearings	Nm	49
Main bearings	Nm	78
Clutch cover	Nm	19
Flywheel [driveplate]	Nm	83 [74]
Front hubs	Nm	WSM
Rear hubs	Nm	–
Wheel nuts / bolts	Nm	103
Spark plugs	Nm	18

Capacities Hi-Lux 2WD (YN85) 1989 to 1991

Engine oil & filter	litres	3.5
Gearbox - 4-speed [5-speed]	litres	G40: 2.2 ⁵
Automatic transmission - refill	litres	2.4
Final drive	litres	1.8
Cooling system	litres	7.0
Fuel tank	litres	65

Notes and Illustrations

¹Models TRKRS, TRMRS only. PRMRS, PRKRS: +13.3±1.0 TRMDSW, TRKRSQ: +12.8±1.0

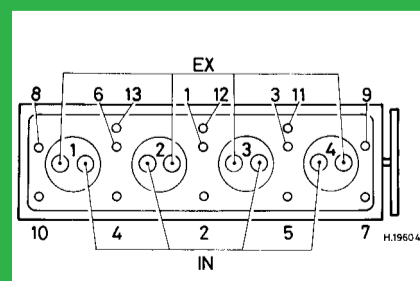
²Models TRKRS, TRMRS only. PRMRS, PRKRS, TRMDSW, TRKRSQ: -40'±30'

³Models TRKRS, TRMRS only. PRMRS, PRKRS, TRKRSQ: +41'±30'. TRMDSW: +45'±30'

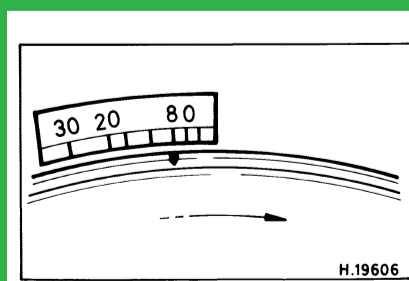
⁴Models PRMRS, PRKRS, TRMDSW, TRKRSQ: +9°49'±45'

⁵L40: 1.9. G52, 54, 58: 2.4

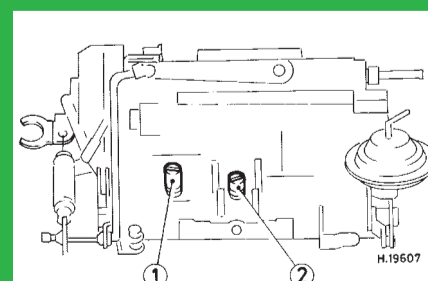
1: Idle speed 2: CO / Mixture



1812 cm³



1812 cm³



Aisan 2V