

| | | | | | | | |
|------------------|------|----------|------------|--------------|-----------------|------------|-----------------------|
| Engine & Cooling | Fuel | Ignition | Electrical | Running gear | Torque settings | Capacities | Notes & Illustrations |
|------------------|------|----------|------------|--------------|-----------------|------------|-----------------------|



Automotive Technical DATA BOOK

Click on one of the buttons above to view data for this car. To return to this screen and make another choice, click anywhere on the data screen.

MENU

HELP

Engine and cooling system 740, 2.0 1987 to 1988

| | | |
|---|-----|--------------|
| Type | | B200K |
| Capacity (cm ³) / number of cylinders | | 1986 / 4 |
| Compression ratio / pressure | bar | 10.0 / ≥8.8 |
| Oil pressure | bar | [2.5 to 6.0] |
| Oil temperature | °C | H |
| Valve clearance - inlet | mm | 0.30 to 0.40 |
| - exhaust | mm | 0.30 to 0.40 |
| Firing order | | 1-3-4-2 |
| No 1 cylinder position | | TBE |
| Thermostat opening temperature | °C | 91 to 93 |
| Radiator cap pressure | bar | 1.0 |

Fuel system 740, 2.0 1987 to 1988

| | | |
|---|-----|--------------|
| Idle speed - manual [auto] | rpm | 900 |
| Fast idle speed - manual [auto] | rpm | — |
| CO @ idle speed [3000 rpm] - see page VI | % | 1.0 to 2.5 |
| HC @ idle speed [3000 rpm] - see page VI | ppm | ≤1200 |
| CO ₂ @ idle speed [3000 rpm] - see page VI | % | — |
| O ₂ @ idle speed [3000 rpm] - see page VI | % | — |
| Carburettor / fuel injection | | Solex |
| Type / ref | | CISAC |
| Main jet / needle | | 120, 135 |
| Injection pressure | bar | — |
| Pump pressure | bar | 0.15 to 0.28 |
| Octane rating | RON | 98[R] |

Ignition system 740, 2.0 1987 to 1988

| | | |
|---------------------------------|--------------------|------------------------------|
| Type | | Renix - AEI |
| Ignition coil | | Bosch |
| Primary resistance | ohms | 0.6 to 0.8 |
| Ballast resistor | ohms | — |
| Voltage - Tmnl 15(+) to earth | V | — |
| Distributor | | Bosch |
| Points gap (air gap) | mm | — |
| Dwell angle | ° (%) | — |
| Condenser capacity | µF | — |
| Rotation | | Clockwise |
| Ignition timing - basic [static | ° Crankshaft @ rpm | 15 BTDC @ 750 |
| V = Vacuum NV = No Vacuum | | NV |
| Total ignition advance | ° Crankshaft @ rpm | 22 to 26 @ 2500 |
| | ° Crankshaft @ rpm | Non-adjustable, Renix system |
| | ° Crankshaft @ rpm | — |
| Centrifugal check. | ° Crankshaft @ rpm | Computer control |
| | ° Crankshaft @ rpm | — |
| | ° Crankshaft @ rpm | — |
| Vacuum range check | mbar | Computer control |
| Maximum vacuum advance | ° Crankshaft | — |
| Spark plugs | | Bosch/Champion |
| Type | | WR7DC / N7YC |
| Electrode gap | mm | 0.70 to 0.80 |

Electrical system 740, 2.0 1987 to 1988

| | | |
|---|-------------|--------------------------------------|
| Battery | V / CC / RC | 12 / 450 / 90 |
| Alternator voltage / full load current / engine rpm | | 13.8 to 14.6 / _ / 3000 |
| Starter motor current / voltage - cranking | A / V | 1.1kW: 70 / 11.5 ¹ |
| - locked | A / V | 1.1kW: 480 to 560 / 7.4 ² |

Running gear 740, 2.0 1987 to 1988

| | | |
|--|----|-----|
| Brakes - | | |
| Front (min. friction material thickness) | mm | 3.0 |
| Rear (min. friction material thickness) | mm | 2.0 |

Tyres

| | | |
|----------------------------------|------|----------------------|
| Saloon | Size | 185/70x14 |
| Estate / Van | Size | 185/70x14: 185/65x15 |
| Pressure - front / rear - Saloon | bar | 1.9 / 1.9 |
| - Estate / Van | bar | 1.9 / 2.1 |

Front suspension / wheel alignment

| | | |
|--------------------------|--------|----------------|
| Toe-in (+) / Toe-out (-) | mm [°] | +3.5±1.0 |
| Camber | | -0.2° to +0.8° |
| Castor | | +4.5° to 5.5° |
| King pin inclination | | — |

Rear suspension / wheel alignment

| | | |
|--------------------------|--------|---|
| Toe-in (+) / Toe-out (-) | mm [°] | — |
| Camber | | — |

Torque wrench settings 740, 2.0 1987 to 1988

| | | |
|-------------------------|----|----------|
| Cylinder head - stage 1 | Nm | 20 |
| - stage 2 | Nm | 60 |
| - stage 3 | Nm | + 90° |
| - stage 4 | Nm | — |
| Big-end bearings | Nm | 20 + 90° |
| Main bearings | Nm | 110 |
| Clutch cover | Nm | — |
| Flywheel [driveplate] | Nm | 70 N |
| Front hubs | Nm | WSM |
| Rear hubs | Nm | WSM |
| Wheel nuts / bolts | Nm | 85 |
| Spark plugs | Nm | 25 |

Capacities 740, 2.0 1987 to 1988

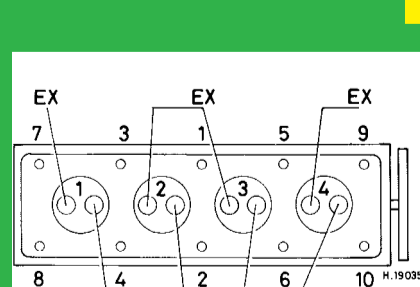
| | | |
|---------------------------------|--------|-----------------|
| Engine oil & filter | litres | 3.9 |
| Gearbox - 4-speed [5-speed] | litres | 1.3. Later: 1.6 |
| Automatic transmission - refill | litres | 3.9 |
| Final drive | litres | 1.6 |
| Cooling system | litres | 8.5 |
| Fuel tank | litres | 60 |

Notes and Illustrations

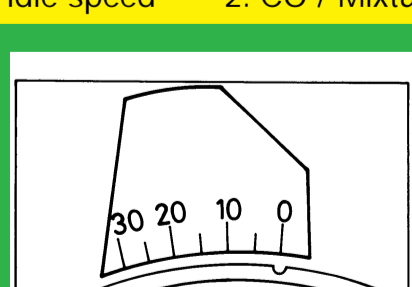
¹1.4kW: 75 / 11.5. 2kW: 65 to 95 / 11.5. Hitachi: 300 / 8.8

²1.4kW: 625 to 800 / 4.5. 2kW: 700 to 880 / 4.5. Hitachi: 880 / 3

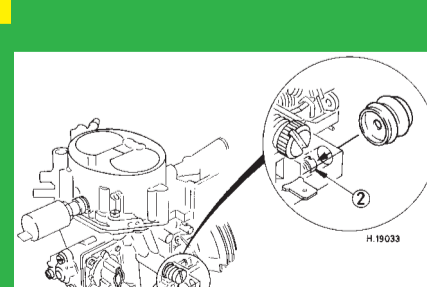
1: Idle speed 2: CO / Mixture



1986 cm³



1986 cm³



Solex CISAC