

Engine & Cooling	Fuel	Ignition	Electrical	Running gear	Torque settings	Capacities	Notes & Illustrations
------------------	------	----------	------------	--------------	-----------------	------------	-----------------------



Automotive Technical DATA BOOK

Click on one of the buttons above to view data for this car. To return to this screen and make another choice, click anywhere on the data screen.

MENU

HELP

Engine and cooling system 45A & Tempo, 903 cm³ 1986 to 1993

Type		100GL 064
Capacity (cm ³) / number of cylinders		903 / 4
Compression ratio / pressure	bar	9.0 / _
Oil pressure	bar	[2.8 to 4.2]
Oil temperature	°C	100
Valve clearance - inlet	mm	0.15
- exhaust	mm	0.20
Firing order		1-3-4-2
No 1 cylinder position		TCE
Thermostat opening temperature	°C	87±2
Radiator cap pressure	bar	0.8

Fuel system 45A & Tempo, 903 cm³ 1986 to 1993

Idle speed - manual [auto]	rpm	850±50
Fast idle speed - manual [auto]	rpm	_
CO @ idle speed [3000 rpm] - see page VI	%	≤0.5
HC @ idle speed [3000 rpm] - see page VI	ppm	≤200
CO ₂ @ idle speed [3000 rpm] - see page VI	%	_
O ₂ @ idle speed [3000 rpm] - see page VI	%	_
Carburettor / fuel injection		IPM
Type / ref		32 MG V 33 / 34 (Weber type)
Main jet / needle		112
Injection pressure	bar	_
Pump pressure	bar	0.20 to 0.30
Octane rating	RON	97[RA] ¹

Ignition system 45A & Tempo, 903 cm³ 1986 to 1993

Type		Contact breaker - CIS
Ignition coil		Iskra. Bosch
Primary resistance	ohms	2.6 to 3.5 (typical)
Ballast resistor	ohms	_
Voltage - Tmnl 15(+) to earth	V	_
Distributor		Rudi Cajavec
Points gap (air gap)	mm	0.37 to 0.43
Dwell angle	° (%)	55±3
Condenser capacity	µF	0.22 to 0.27
Rotation		Clockwise
Ignition timing - basic [static	° Crankshaft @ rpm	10 BTDC @ 850±50 ¹
V = Vacuum NV = No Vacuum		NV
Total ignition advance	° Crankshaft @ rpm	_
	° Crankshaft @ rpm	_
	° Crankshaft @ rpm	_
Centrifugal check.	° Crankshaft @ rpm	0 @ 1000 to 1400
	° Crankshaft @ rpm	22 to 26 @ 3500
	° Crankshaft @ rpm	30 to 34 @ 4750
Vacuum range check	mbar	133 to 333
Maximum vacuum advance	° Crankshaft	10 to 14
Spark plugs		Bosch/Champion
Type		W7D / RN9YC
Electrode gap	mm	0.50 to 0.60

Electrical system 45A & Tempo, 903 cm³ 1986 to 1993

Battery	V / CC / RC	12 / 370 / 45Ah
Alternator voltage / full load current / engine rpm		14.0 / _ / 2500
Starter motor current / voltage - cranking	A / V	198 / 9.1
- locked	A / V	315 / 7±0.3

Running gear 45A & Tempo, 903 cm³ 1986 to 1993

Brakes -		
Front (min. friction material thickness)	mm	2.0
Rear (min. friction material thickness)	mm	2.0

Tyres		
Saloon	Size	145x13
Estate / Van	Size	145x13
Pressure - front / rear - Saloon	bar	1.9 / 2.0
- Estate / Van	bar	1.9 / 2.0

Front suspension / wheel alignment

Toe-in (+) / Toe-out (-)	mm [°]	0±1.0 L
Camber		+1°25'±30'
Castor		+2°15'±30'
King pin inclination		_

Rear suspension / wheel alignment

Toe-in (+) / Toe-out (-)	mm [°]	+3.0 to 7.0
Camber		-3°±30'

Torque wrench settings 45A & Tempo, 903 cm³ 1986 to 1993

Cylinder head - stage 1	Nm	60
- stage 2	Nm	_
- stage 3	Nm	_
- stage 4	Nm	_
Big-end bearings	Nm	41
Main bearings	Nm	69
Clutch cover	Nm	16
Flywheel [driveplate]	Nm	49
Front hubs	Nm	137
Rear hubs	Nm	137
Wheel nuts / bolts	Nm	86
Spark plugs	Nm	32

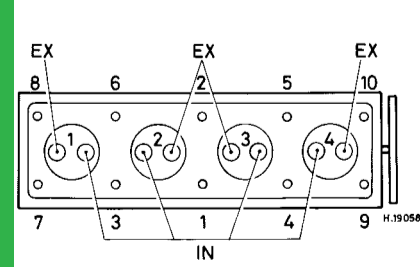
Capacities 45A & Tempo, 903 cm³ 1986 to 1993

Engine oil & filter	litres	4.0
Gearbox - 4-speed [5-speed]	litres	3.2
Automatic transmission - refill	litres	_
Final drive	litres	WT
Cooling system	litres	5.0
Fuel tank	litres	30

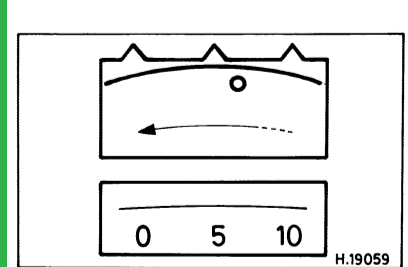
Notes and Illustrations

¹[E 95 RON]: 5° BTDC

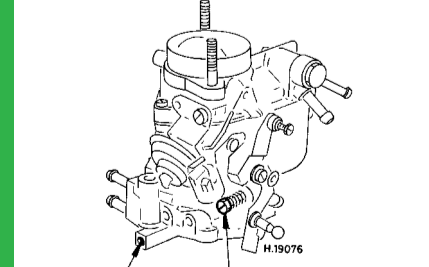
1: Idle speed 2: CO / Mixture



903 cm³



903 cm³



IPM 32 MG V 33/34