

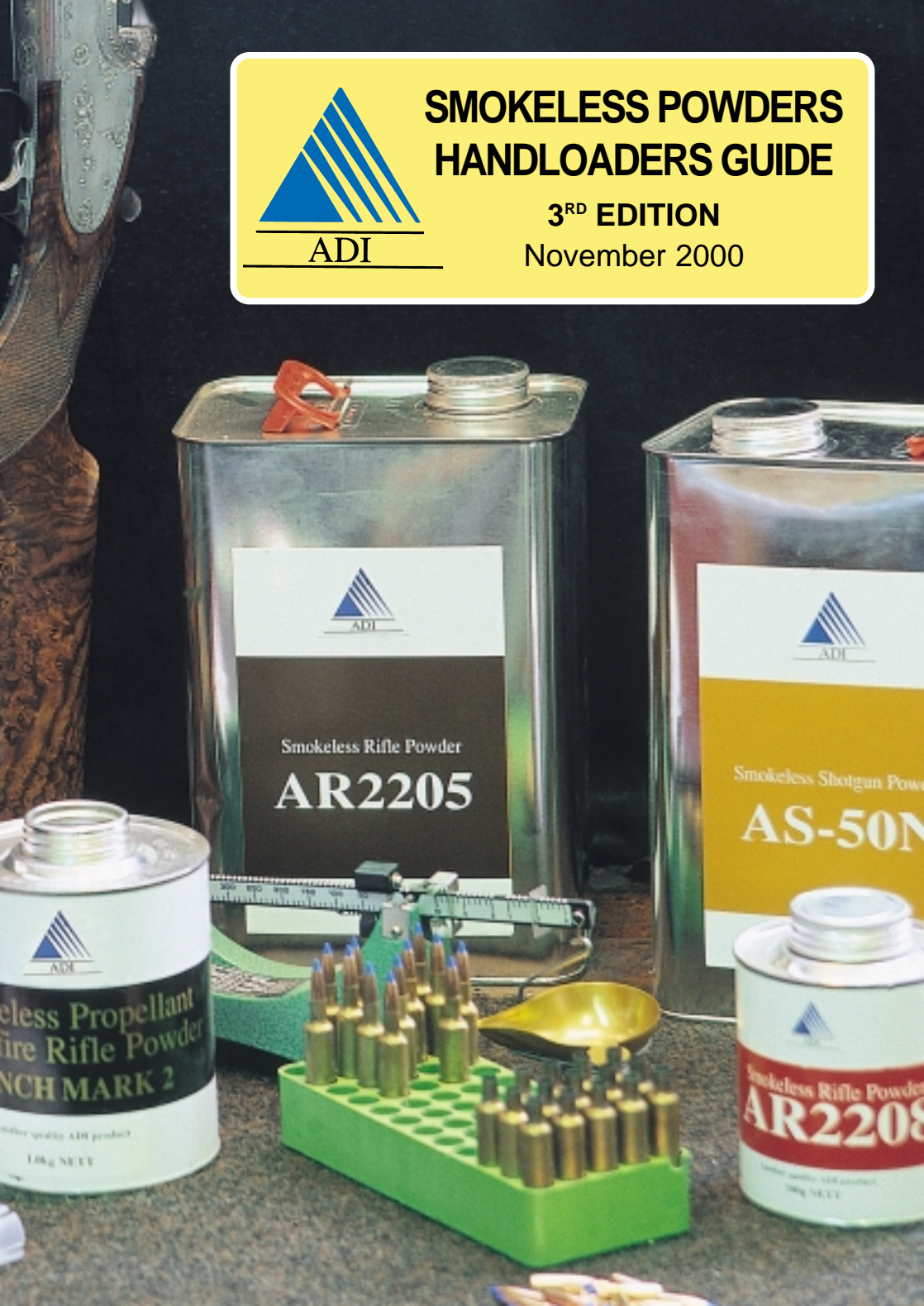


ADI

# SMOKELESS POWDERS HANDLOADERS GUIDE

3<sup>RD</sup> EDITION

November 2000





**ADI Limited** is one of Australia's foremost defence companies, employing some 3,000 people. ADI's businesses run the gamut of defence support activities, from ammunition production through to the installation and commissioning of complex ship management and radar systems. ADI is proud of its position in the Australian market, and constantly strives to improve its performance through investment and innovation.

In the year 2000 ADI is nearing 115 years of experience in ammunition manufacture and 90 years of powder production. The company can trace its roots to the Colonial Ammunition Company (1888, Footscray, Victoria) and "the Cordite Factory" (1911, Maribyrnong, Victoria). In the time since we have seen many changes, but one constant has been a commitment to providing quality ammunition and components for use in the defence of our country.

ADI's ammunition and propellant capabilities have kept pace with rapid developments in applied technology. Now extending to production of insensitive rocket motor propellant and motor filling, insensitive warhead filling and development of a quality Australian propellant for the Australian Army's 25mm Bushmaster cannon ammunition, ADI's expertise and capability in energetic materials is second-to-none in our region.

Australia's sporting shooters have for some years now enjoyed using ADI sporting powders. Products on the Australian market are a direct result of our defence commitment, and our partnership with the Hodgdon Powder Co. Inc. of the USA. ADI powders are now used by discerning shooters across the globe, and we like to think that our commitment to quality and innovation will see us at the forefront of powder development and manufacture for many years to come.



ADI



**ADI Sporting Powders** cover the full range of burning rate requirements from the fast burning handgun and shotgun powders right down to the very slow big-bore magnum rifle powders.

The shotgun powders are all large diameter disc powders, double base in composition, covering a wide range of applications in 12,20 and 28 gauge loads. All the shotgun powders are exceptionally clean burning.

The handgun powders are all smaller diameter disc powders manufactured for very uniform metering through powder loaders. The faster burning powders are double base in composition for increased energy. The slower burning powders for use in heavy loads are single base. All the handgun powders are exceptionally clean burning when loaded correctly. Note that the three fastest handgun powders are all matched with the nominal burning rates and bulk densities of the three shotgun powders but, because of their smaller size, they offer superior ability to be metered for small charge weights from standard powder loaders. Reloaders should endeavour to use the AS series powders in shotgun and the AP series powders in pistol where possible.

All the rifle powders are single perforated tubular propellants of single base composition based on ADI's experience in developing powders for the Australian Defence Forces' use in extreme climatic conditions. As a consequence all the rifle powders have, as a feature, low ballistic temperature coefficients – i.e. velocities and pressures do not vary with ambient temperature like most of the other powders available for reloading. In addition, the powders all have good loading characteristics with respect to bulk density and uniformity of metering through powder loaders. They are also very clean burning at normal loads.

All ADI sporting powders are packaged as UN class 1, Hazard Division 1.3C. (mass fire risk).

ADI powders are packed in 500 grams, 1kg, 2kg, or 4kg containers, depending upon type of powder.

## ADI Smokeless Sporting Powders



Powder	Type	Can Size
AS-30N	SHOTGUN/PISTOL	0.5 kg / 2 kg
AP-30N (Discontinued)	PISTOL	
AS-50N	SHOTGUN	0.5 kg / 2 kg
AP-50N	PISTOL	0.5 kg / 2 kg
AS-70N (Discontinued)	SHOTGUN	
AP-70N	SHOTGUN/PISTOL	0.5 kg / 2 kg
AP-90 (Discontinued)	PISTOL	
AP-100	PISTOL	0.5 kg / 2 kg
AR2205	RIFLE/PISTOL	0.5 kg / 4kg
AR2207	RIFLE	0.5 kg / 4kg
BM1	RIFLE	1 kg
AR2206	RIFLE	0.5 kg / 4kg
BM2	RIFLE	1 kg
AR2208	RIFLE	0.5 kg / 4kg
AR2209	RIFLE	0.5 kg / 4kg
AR2213 (Discontinued)	RIFLE	
AR2213SC (New)	RIFLE	0.5 kg / 4kg
AR2214 (Discontinued)	RIFLE	
AR2217 (Coming soon)	RIFLE	0.5 kg / 4kg
AR2218	RIFLE	0.5 kg / 4kg

# SHOOT WITH THE BEST!

ADI's range of powders offers the sporting shooter all the reliability, consistency and high performance they demand. Tested under the most rigorous conditions, this state-of-the-art (and development and production of quality powders *is* an art) range of powders offers the right burning rates for every weapon type – from shotguns to big-bore rifles.

All ADI powders are manufactured to the highest international standards. And they are backed by a comprehensive technical support service.

If you care enough to reload, you'll use ADI powders. And shoot with the best.

## Pistol and Shotgun Powders

ADI shotgun powders are available in a range of burning rates for 12, 20 and 28 gauge cartridges. Exceptionally clean burning, these unique sporting powders offer great repeatability under a wide range of ambient temperatures.

For sporting pistol shooters, ADI offers a range of powders with clean burning properties similar to shotgun powders. Covering the range of calibres from .25 ACP to .50 Action Express, ADI's pistol powders perform with ultimate repeatability and reliability.

## Rifle Powders

For rifles, the ADI sporting powders range is a product of our extensive experience in developing propellants for the Australian Defence Force. ADI offers a range of powders for most calibres from .17 Remington to 0.50 BMG.

## CONTENTS

Shotgun Powders .....	4
Handgun Powders .....	5
Rifle Powders .....	6
Warnings .....	9
Reloading Safety .....	11
Shotshell Data .....	13
Pistol Data .....	21
Rifle Data .....	29
Cowboy Action Data .....	57
Shotshell Bushing Chart .....	64
ADI Power Equivalent .....	69
Burning Rates .....	70

**Cover photo** by Ben Eu (Gunsmith/Photographer) of Mialls Gunshop, Frankston Vic. Ph: 9783 1576



**Darryl Page**

*Dear Shooter,*

*Whilst it has been some time in the making, it is with pleasure that I present the 3rd Edition of our reloading guide. You will certainly notice some differences in this edition, the least of which is ADI's new blue logo, one result of the recent purchase of ADI by the Transfield/Thomson-CSF Joint Venture. With these new owners, ADI is now part of a strong and focussed international business and looks forward to a long future.*

*Secondly, you will notice more data! Through our strong partnership with Hodgdon Powder Co. Inc. of the USA, we can now offer a reliable, much expanded range of data in this guide. Data for many obscure and unusual cartridges, as well as new cartridges has been included. The data has been fired under controlled conditions to ensure safety and repeatability.*

*Finally, you will notice changes to the range of powders offered. We have, and will continue, to add new powders to our product range as they are developed, and discontinue powders for which demand has almost ceased or duplication exists.*

*I hope you find this guide a valuable tool, and wish to thank you for your support over the years through continued purchase of ADI Sporting Powders. If you keep buying them, we'll keep making them. Happy shooting*

*Darryl Page  
Director of Ordnance  
ADI Limited*

# SHOTGUN POWDERS

*In approximate order of burning rate from fastest to slowest.*

## AS-30N

An effective low bulk density, high burning rate shotgun powder very suitable for 24 gram loads up to 1350 ft/sec and its burning rate and bulk density are comparable with those for powders such as Hercules Red Dot®.

**TYPICAL LOAD:** Winchester compression formed case – 12 gauge. 70mm length  
Winchester WAA1224 wad  
Winchester W209 Primer  
SHOT WEIGHT 24 grams lead shot  
CHARGE WEIGHT 18.50 grains  
VELOCITY 1300 ft/sec  
PRESSURE 9500 psi

---

## AS-50N

An effective intermediate bulk density, fast/medium burning rate shotgun powder very suitable for 28 gram loads up to 1350 ft/sec in 12 gauge and 24 gram loads up to 1200 ft/sec in 20 gauge. Its burning rate and bulk density are in the region of those for powders such as Hercules Green Dot®.

**TYPICAL LOAD:** Winchester compression formed case – 12 gauge. 70mm length  
Winchester WAA12SL wad  
Winchester W209 Primer  
SHOT WEIGHT 28 grams lead shot  
CHARGE WEIGHT 21.5 grains  
VELOCITY 1300 ft/sec  
PRESSURE 10,450 psi

---

## AP-70N

An effective, moderately high bulk density, slow/medium burning rate shotgun powder, very suitable for 32 gram loads up to 1310 ft/sec and 36 gram loads up to 1275 ft/sec in 12 gauge, for 28 gram loads up to 1165 ft/sec in 20 gauge and for 21 gram loads up to 1200 ft/sec in 28 gauge. Its burning rate and bulk density are in the region of those for powders such as Hercules Unique® or Herco®.

**TYPICAL LOAD:** Winchester compression formed case – 12 gauge. 70mm length  
Winchester WAA12F114 wad  
Winchester W209 Primer  
SHOT WEIGHT 36 grams lead shot  
CHARGE WEIGHT 22.7 grains  
VELOCITY 1255 ft/sec  
PRESSURE 10,600 psi



# HANDGUN POWDERS

*In approximate order of burning rate from fastest to slowest.*

## AP-30N **DISCONTINUED**

An effective low bulk density, high burning rate handgun powder very suitable for light target loads in calibres such as .38 special and .45 ACP. Its burning rate, bulk density and clean burning properties are similar to those of AS-30N shotgun powder but it has superior metering characteristics for small charge weights.

**TYPICAL LOAD:** 38 special with 148 grain lead BBWC projectile  
CHARGE WEIGHT 2.5 grains  
APPROX VELOCITY 650 ft/sec

---

## AP-50N

An effective intermediate bulk density medium/fast burning rate handgun powder very suitable for medium target loads in calibres such as .38 special and .45 ACP. It has proven its usefulness in equipment such as "Ammo Load" for the automated reloading of ammunition for police and paramilitary applications in these calibres. Its burning rate, bulk density and clean burning properties are similar to those of AS-50N shotgun powder but it has superior metering characteristics for small charge weights.

**TYPICAL LOAD:** .45 ACP with 200 grain lead SWC projectile  
CHARGE WEIGHT 5.0 grains  
APPROX VELOCITY 960 ft/sec

---

## AP-70N

A very versatile medium bulk density medium burning rate handgun powder useable for loading over almost the full range of handgun cartridges (but not necessarily top performance loads for which specialised burning rate powders must be used). Its burning rate, bulk density and clean burning properties are similar to those of AS-70N shotgun powder but it has superior metering characteristics for small charge weights in powder loaders.

**TYPICAL LOAD:** .44 Special with 200 grain jacketed projectile.  
CHARGE WEIGHT 6.8 grains  
APPROX VELOCITY 967 ft/sec

---

## AP-90 **DISCONTINUED**

An effective single base medium bulk density, medium slow burning rate powder suitable for medium loads in cartridges such as 9mm, .38 super. Its bulk density is slightly lower than AP-70N and its burning rate is approximately 10% slower. It shares the same clean burning and superior metering characteristics with the other ADI handgun powders.

**TYPICAL LOAD:** 9mm Luger with 125 grain lead RN projectile  
CHARGE WEIGHT 5.2 grains  
VELOCITY 1135 ft/sec

# HANDGUN POWDERS

*In approximate order of burning rate from fastest to slowest.*

## AP-100

An effective single base high bulk density, slow burning handgun powder suitable for major power factor loads in .38 super and similar cartridges. Its bulk density is a little lower than that of Hercules Blue Dot® while its burning rate is approximately 7% faster. It shares the same clean burning and superior metering characteristics with the other ADI handgun powders.

**TYPICAL LOAD:** .40 S&W with 180 grain lead CN projectile

CHARGE WEIGHT 6.5 grains

APPROX VELOCITY 1050 ft/sec

# RIFLE POWDERS

*In approximate order of burning rate from fastest to slowest.*

## AR2205

A very fine grained, very fast burning rifle powder suited to .22 Hornet loads but also useful in some Magnum pistol loads. Its burning rate is close to that of IMR 4227.

**TYPICAL LOAD:** .22 Hornet with 45 grain jacketed projectile.

CHARGE WEIGHT 9.8 grains

APPROX VELOCITY 2,484 ft/sec

---

## AR2207

A very useful fine grained fast burning rifle powder for cartridges such as the 7.62mm x 39 Russian, 6mm PPC. Its burning rate is close to that of IMR 4198 although it meters significantly better through standard powder loaders.

**TYPICAL LOAD:** .222 Remington with 50 grain jacketed projectile

CHARGE WEIGHT 20.5 grains

APPROX VELOCITY 3200 ft/sec

---

## BENCH MARK 1

A very fine grained powder with very high bulk density and superior metering characteristics for use by bench rest shooters in cartridges such as .22 PPC. It is intermediate in burning rate between AR2207 and AR2206.

**TYPICAL LOAD:** .223 Remington with 55 grain jacketed projectile

CHARGE WEIGHT 24.0 grains

APPROX VELOCITY 3175 ft/sec



# RIFLE POWDERS

*In approximate order of burning rate from fastest to slowest.*

## BENCH MARK 2

A fine grained powder with very high bulk density and superior metering characteristics for use in national rifle association match loads such as 5.56mm with 62 grain projectiles. It is similar in burning rate close to AR2206, but can be faster depending on the calibre used.

**TYPICAL LOAD:** .22-250 Remington with 52 grain jacketed projectile  
CHARGE WEIGHT 34.0 grains  
APPROX VELOCITY 3775 ft/sec

---

## AR 2206

A very versatile medium burning rifle powder suitable for use in .308 Winchester. It can also be used in a wide range of other cartridges. Its burning rate is close to that of IMR 3031 but its bulk density is higher.

**TYPICAL LOAD:** .308 Winchester with 155 grain jacketed projectile  
CHARGE WEIGHT 44.5 grains  
APPROX VELOCITY 2825 ft/sec

---

## AR2208

A useful fine grained medium/slow burning rifle powder for medium sized cartridges such as .308 Winchester and 25-06. Its burning rate is close to that of IMR 4064 but its bulk density is higher.

**TYPICAL LOAD:** 30-30 Winchester with 150 grain jacketed projectile  
CHARGE WEIGHT 34.5 grains  
APPROX VELOCITY 2349 ft/sec

---

## AR2209

A useful fine grained, moderately slow burning rifle powder for cartridges such as 22-250, .243 Winchester, .270 Winchester, 30-06 and 300 Winchester Magnum. Its burning rate is close to that of IMR 4350 but its bulk density is a little higher and its metering through a powder loader is better.

**TYPICAL LOAD:** 30-06 Springfield with 165 grain jacketed projectile  
CHARGE WEIGHT 59.0 compressed  
APPROX VELOCITY 2835 ft/sec

---

## AR2213 **DISCONTINUED**

A versatile fine grained, slow burning rifle powder for larger capacity cartridges such as .270 Winchester, 7mm Remington Magnum, 300 Winchester Magnum and .300 Weatherby Magnum. Its burning rate is in between that of IMR 4831 and H4831 with similar bulk density but better metering characteristics with standard powder loaders.

**TYPICAL LOAD:** .270 Winchester with 140 grain jacketed projectile  
CHARGE WEIGHT 57.0 grains  
APPROX VELOCITY 3005 ft/sec

# RIFLE POWDERS

*In approximate order of burning rate from fastest to slowest.*

## AR2213SC **NEW**

AR2213SC will replace AR2213 in the Australian reloading market. AR2213 has been produced by ADI only for supply to the Australian reloading market and is only manufactured every three to four years due to low consumption versus the lot size. As a result, the powder that reaches the shooter may not be of recent manufacture and stockout situations occasionally occur.

ADI produces AR2213SC for the North American reloading market in much higher quantities than AR2213. AR2213SC is in regular production and ADI will be in a better position to guarantee supply. AR2213SC is repackaged and distributed by Hodgdon Powder Co. in the US under the brand name of "Hodgdon H4831SC." ADI also produce AR2213H for Hodgdon, being "Hodgdon H4831" in North America and Europe. AR2213SC and AR2213H have the same burning rate and bulk density (charge weights), but AR2213SC has improved metering characteristics through a shorter cut length of grain.

**TYPICAL LOAD:** 300 Winchester Magnum with 165 grain jacketed projectile

CHARGE WEIGHT 75.5 grains

APPROX VELOCITY 3055 ft/sec

---

## AR2217 **COMING SOON**

A fine grained, very slow burning rifle powder, suited for use in most large calibre magnums. Its burning rate is about 5% faster than AR2214.

**TYPICAL LOAD:** 300 Remington UltraMag with 180 grain jacketed projectile

CHARGE WEIGHT 96.0 grains

APPROX VELOCITY 3220 ft/sec

---

## AR2214 **DISCONTINUED**

A fine grained, very slow burning rifle powder with specialised applications for some large magnum cartridges. Its burning rate is about 10% below that of AR2213 (a few percent below that of IMR 7828).

**TYPICAL LOAD:** 7mm Remington Magnum with 175 grain jacketed projectile

CHARGE WEIGHT 69.0 grains

APPROX VELOCITY 2650 ft/sec

---

## AR2218

An extremely slow burning rifle propellant, initially developed for 0.50 cal and is perfect for over-bore, large capacity magnums. Its burning rate is about 5% below that of AR2214.

**TYPICAL LOAD:** 30-378 Weatherby Magnum with 220 grain jacketed projectile

CHARGE WEIGHT 118.5 grains

APPROX VELOCITY 3145 ft/sec

# WARNINGS

## ADI SMOKELESS PROPELLANTS

1. For the safety of purchaser and others, ADI powders **must be used in accordance with the latest edition of the ADI Smokeless Powders Handloader's Guide**. Overloading, incorrect storage or improper use can result in personal injury or death to the user and/or other persons as well as damage to property.  
It is **essential** that users of ADI powders:
  - Follow the recommendations of the ADI Smokeless Powders Handloader's Guide by not exceeding the maximum loads.
  - Use only the latest reloading data, issued free of charge by ADI.
  - Keep the powders out of reach of children and those persons unfamiliar with the properties of smokeless powders.
  - Store the powders in a cool, dry and safe place with the lid tightly closed.
  - Check the powders at least once per year for any signs of deterioration as described below.
  - Store all powders in the original containers.
  - Do not smoke in areas where ADI powders are stored and used.
  - Do not have loaded firearms in areas where ADI powders are stored and used.
2. Loading data provided within the ADI Smokeless Powders Handloader's Guide has been compiled from many sources including actual ballistic testing by ADI under controlled conditions and published loading/ballistic information available in the literature. The ballistic performance of smokeless powders varies considerably depending upon factors such as the type of firearm being used and its condition, the particular components being used in a cartridge with a powder, the reloading techniques used, the actual batch of the powder being loaded, weather conditions at the time of firing, etc. Therefore, it is not possible for the loading data in the ADI Smokeless Powders Handloader's Guide (or any other similar manual) to be other than a guide to a safe load for any particular application. Exceeding the recommended loading data will increase the chance of obtaining unsafe pressures and may result in damage and/or personal injury or even death.
3. While ADI controls the burning rate of its various smokeless powders within tight limits at the time of manufacture all other factors affecting the ballistic performance of these powders at the time of use are outside ADI's control. ADI therefore disclaims any and all warranties concerning the use of its various smokeless powders for any particular application. ADI does not assume, nor does it authorise any person to assume for it, any liability in connection with the use of any product or data.
4. The buyer of ADI Smokeless Powders assumes the risk of having to follow safe loading practices otherwise damage and/or severe personal injury (including death) may occur.
5. NEVER substitute ADI Smokeless Powders for black powder or Pyrodex® or mix smokeless powders with these materials. NEVER use ADI smokeless powders in black powder firearms, saluting cannons or similar devices. Any of these practices may result in the firearm blowing apart resulting in property damage, personal injury or even death.
6. Store smokeless powders in a cool dry place separate from solvents, flammable gases and other combustible materials. Ensure that the storage area selected is free from any possible source of excess heat and is isolated from open flame, hot water heaters, furnaces, chimneys, flue pipes, etc. Avoid storing smokeless powders in areas which may be heated by the sun or where electrical, electronic or mechanical equipment is operated.  
  
Do not allow containers of powder to contact walls of storage areas which are exposed on the other side to sunlight or other form of heating. Any such form of heating or ignition may result in a fire, either immediately or after some time due to accelerated chemical deterioration and subsequent spontaneous ignition. An average storage temperature below 25°C is recommended to obtain a safe shelf life of at least 10 years from the date of packing. Increased storage temperature will reduce the safe shelf life significantly – by approximately one-third for every 10°C above 25°C.

# WARNINGS

7. All smokeless powders deteriorate chemically as they get older. This rate of deterioration can be accelerated by such things as storage in warm conditions, exposure to other chemicals and exposure to direct sunlight. Any such deterioration may ultimately lead to a fire through spontaneous ignition of the powder.

CHECK containers of smokeless powder regularly for possible deterioration through age or inadequate storage. Yearly checks are recommended wherever average daily summer temperatures exceed 30°C. Where average daily summer temperatures are usually below 30°C checks should be made every two years.

CHECK containers of smokeless powder for possible chemical deterioration through age or inadequate storage. Such deterioration may ultimately lead to spontaneous ignition of the powder. Chemical deterioration of smokeless powder can be recognised by carefully smelling the contents of the container – any deterioration produces an acrid, acidic odour quite different from the normal sweet smelling odours of ethanol or ether which are usually present. Rusting of metal surfaces exposed to smokeless powder can also indicate deterioration.
8. Deteriorated smokeless powder should be disposed of by carefully burning it in thin layers (not more than 10mm deep) in small quantities (never more than 500 gram) in an isolated location (at least 10 metres from any other combustible material). **DO NOT LIGHT THE POWDER DIRECTLY.** Always use an ignition train of slow burning combustible material so that you are able to retreat to a safe distance before the powder ignites.
9. Store ADI Smokeless Powders in their original containers which have been approved for that purpose. Storage cabinets used for storage of containers of Smokeless powders should be constructed of insulating materials with weak walls, seams or joints to provide easy venting in the event of a fire. Such storage cabinets should not be located on walls where heating on the other side (by the sun or other heating arrangement) will occur.
10. **DO NOT SMOKE** in areas where smokeless powder is stored or used.
11. **DO NOT HAVE LOADED FIREARMS** in areas where ADI Smokeless Powders are stored or used – accidental or intended operation of the firearm may cause ignition of smokeless powder, either by direct ignition of powder in the open or through bullet impact on containers of powders.
12. Do not cut, pierce or puncture powder containers.
13. ADI rifle powders are designed to give less ballistic variation with temperature changes than regular smokeless powders. This does not mean that ballistics will never change with temperature. The extent to which change is minimised depends upon many factors including the calibre, primer brand and projectile weight. Care should always be taken to ensure that any particular load is safe at the extreme temperatures at which it will be used.
14. Smokeless powders can change their moisture reasonably quickly if exposed to the atmosphere. Any change of moisture can affect the powder burning rate and the effectiveness or safety of a particular load. Always minimise the exposure of any smokeless powder to the atmosphere during loading. Use minimum quantities of powder at any time in powder loaders and keep lids on containers tightly closed at all times. Do not keep powders in loaders for long periods of time. In this way you are more likely to preserve the appropriate level of moisture for the lot of the powder in use and obtain consistent reliable ballistic performances from every load.
15. Follow the hints on Reloading Safety given in the ADI Smokeless Powders Reloader's Guide. Remember that smokeless powders and ammunition are explosive and that firearms are only designed to operate within safe working limits and are not indestructible. The wrong combination of powder burning rate, charge weight, cartridge components and weapon can be disastrous. **ALWAYS TAKE EXTREME CAUTION** when you are reloading.
16. Never mix any varieties of powder, regardless of their type, brand or source.
17. Do not salvage powder from old cartridges, and do not mix new and salvaged powder.
18. Always store powder in the smallest practical quantities. If you have large quantities of powder, do not maintain it all in one place only. Spread your containers, and remember that small containers are safer than large containers.

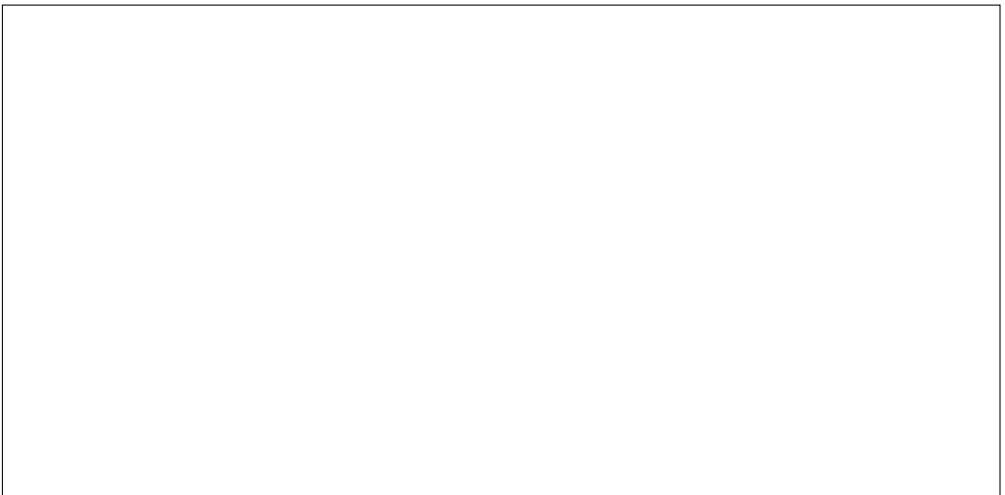
# RELOADING SAFETY

## ADI SMOKELESS PROPELLANTS

1. These instructions on Reloading Safety should be read in conjunction with the Warnings section on pages 9 and 10.
2. Take care at all times – items and equipment used for reloading can all be dangerous if mishandled or abused.
3. Keep reloading components out of the reach of children – in particular powder, primers and lead projectiles.
4. Keep powder away from other combustible material and from possible sources of ignition.
5. Do not keep old powders, salvaged powders or powders of uncertain origins.
6. Do not smoke in areas where powder is stored or while handling powder or primers.
7. Only store powder in its original container to avoid the risk of the powder being mislabelled.
8. Do not leave any powder or primers in reloading press or in powder/primer dispensers after handloading is completed.
9. Clean up spilled powder promptly. Use a brush and dustpan – do not use a vacuum cleaner. Keep the waste powder under water in a suitable container until it can be disposed of safely. Do not accumulate large amounts of waste powder.
10. Each ADI Smokeless Powder has specific burning rate and bulking characteristics determined by its composition, geometry and manufacturing process. The factors are carefully controlled during manufacture to ensure consistent ballistic performance. Do not attempt to mix or blend different powders as such mixtures may produce dangerous and erratic velocities and pressures.
11. Develop a strict routine for reloading operations and avoid distraction such as television, visitors, etc.
12. Recheck each operation for safety and uniformity.
13. Double check critical points like powder type, projectile weight and diameter before starting.
14. Only have one powder type and one projectile type in the actual working area while reloading.
15. Do not trim cases below the minimum design length for any calibre.
16. Ensure that cases are not deformed and are free of body splits, mouth cracks, enlarged primer pockets, enlarged flash holes and any foreign matter. Only use cases which are dry (but do not dry cases by direct heating or in an oven above 150°C).
17. Check Projectiles for damage and ensure that lead projectiles are free from casting defects.
18. Always wear safety glasses or goggles while reloading and wear gloves while handling lead projectiles.
19. Owing to the effect of variations within allowable manufacturing tolerances for cartridge components made by different manufacturers, weapon variations and conditions, operating temperatures etc, pressures developed by any given rifle or pistol load can vary significantly from that applying to our recommended loads. It is therefore **essential** that loads be worked up from a charge weight lower than the recommended maximum, watching for any signs of excessive pressure (difficult extraction, gas leaks, flattened or blown primers, unusual recoil or expanded case heads). Loads can then be worked up to safe comfortable levels providing signs of excessive pressure are not observed. If signs of excessive pressure are noticed then loads must be reduced until they are at least 5% lower than the load at which the excessive pressure signs were first noted.

# RELOADING SAFETY

20. Take special care when working up trial loads with slow burning powders in large calibre cartridges. Light loads in some calibres may produce occasional dangerously high pressures. It is suggested that minimum loads in large calibre cartridges should not be reduced below about 75% case capacity.
  21. Keep detailed records of your safe loads for your weapons and consult them before reloading. However, be prepared to work them up again whenever you change the lot of powder or alter the weapon. Normally a starting reduction of 5% in charge weight is all that should be necessary when you change lots of powder.
  22. Never exceed maximum recommended loads.
  23. Carry out frequent check weighing of powder charges thrown either by a hand operated powder measure or reloading press to ensure the setting has not changed. At least five charges should be used for each check using a good set of powder scales.
  24. Because many recommended loads (especially for pistols) do not fill the cartridge case it is essential that, prior to bullet seating, each filled case is individually inspected to ensure that it contains only a single charge. Never load a cartridge with a double charge as excessively dangerous pressures are certain to occur. After bullet seating, the cartridge overall length must be individually checked to ensure that it has not fallen below the minimum design value where excessive dangerous pressures may be experienced.
  25. Ensure that all reloaded cartridges are free from oil, grease, excess lead bullet lubricant and any other foreign matter prior to firing.
  26. Never attempt to decap live primers from a cartridge case. Primed cases or cartridges should always be fired in a firearm to destroy the primer.
- NOTE:** Whenever practicable, avoid loading to maximum possible velocity. Experienced shooters know that velocities which are somewhat lower than maximum will usually give the best accuracy while helping to prolong weapon and barrel life and making shooting more comfortable.
- Any questions or concerns related to the use of ADI Smokeless Powders should be directed to the ADI Ordnance, Propellants, Explosives and Chemicals on (03) 5742 2200.



# Shotshell Data

Loads listed here should be followed as they are printed. These loads are for use with lead shot only, no larger than #2 size.

They must not be used with steel shot under any circumstances.

For loading data for BB's through to slugs, contact ADI Limited, PE & C on (03) 5742 2200.

**NEVER EXCEED THE  
MAXIMUM RECOMMENDED  
LOADS OR SHOT WEIGHTS.**





# SHOT GUN DATA

12 Gauge 2<sup>3</sup>/<sub>4</sub>" (70mm) Plastic compression-formed cases (Winchester AA12; Mk 5 Super X; Supreme; Beretta)

SHOT WEIGHT (ounces)	NOMINAL VELOCITY (ft/sec)	APPROX. DRAM EQUIV.	WAD TYPE	PRIMER TYPE	AS-30N		AS-50N		AP-70N	
					WEIGHT (grain)	PRESS (psi)	WEIGHT (grain)	PRESS (psi)	WEIGHT (grain)	PRESS (psi)
<b>7/8</b>	1200		WAA1224	WIN209 CC1209 Fiocchi 616	16.8	7000				
	1255		WAA1224	WIN209 CC1209 Fiocchi 616	17.5	8350				
	1300		WAA1224	WIN209 CC1209 Fiocchi 616	18.5	9500	21.0	7800		
	1350		WAA1224	WIN209 CC1209 Fiocchi 616	19.2	10600	22.0	8300		
<b>1</b>	1180	2 <sup>3</sup> / <sub>4</sub>	WAA12SL	WIN209 CC1209 Fiocchi 616	17.0	8450	19.5	8000		
	1250	3	WAA12SL	WIN209 CC1209 Fiocchi 616	18.5	9750	20.4	9200		
	1300	3 <sup>1</sup> / <sub>4</sub>	WAA12SL	WIN209 CC1209 Fiocchi 616	19.5	11000	21.5	10450		
	1350		WAA12SL	WIN209 CC1209 Fiocchi 616	NR	NR	22.5	11250		

NR = Not Recommended

# SHOT GUN DATA

12 Gauge 2<sup>3</sup>/<sub>4</sub>" (70mm) Plastic compression-formed cases (Winchester AA12; Mk 5 Super X; Supreme; Beretta)

SHOT WEIGHT (ounces)	NOMINAL VELOCITY (ft/sec)	APPROX. DRAM EQUIV.	WAD TYPE	PRIMER TYPE	AS-30N		AS-50N		AP-70N	
					WEIGHT (grain)	PRESS (psi)	WEIGHT (grain)	PRESS (psi)	WEIGHT (grain)	PRESS (psi)
1 <sup>1</sup> / <sub>8</sub>	1090	2 <sup>1</sup> / <sub>2</sub>	WAA12	WIN209 CCI209 Fiocchi 616	16.3	7500				
	1145	2 <sup>3</sup> / <sub>4</sub>	WAA12	WIN209 CCI209 Fiocchi 616	17.0	10000	19.0	9000		
	1200	3	WAA12	WIN209 CCI209 Fiocchi 616	NR	NR	19.5	9850	23.0	9750
	1250	3 <sup>1</sup> / <sub>4</sub>	WAA12	WIN209 CCI209 Fiocchi 616	NR	NR	NR	NR	23.5	10100
	1300		WAA12	WIN209 CCI209 Fiocchi 616	NR	NR	NR	NR	24.50	11200
1 <sup>1</sup> / <sub>4</sub>	1220		WAA12F114	WIN209 CCI209M					23.0	10900
									22.5	11400

# SHOT GUN DATA

## 12 Gauge 2<sup>3</sup>/<sub>4</sub>" (70mm) Plastic Reiffenhauser style cases (Fiocchi Cheddite)

SHOT WEIGHT (ounces)	NOMINAL VELOCITY (ft/sec)	APPROX. DRAM EQUIV.	WAD TYPE	PRIMER TYPE	AS-30N		AS-50N		AP-70N	
					WEIGHT (grain)	PRESS (psi)	WEIGHT (grain)	PRESS (psi)	WEIGHT (grain)	PRESS (psi)
7/8	1200	2 <sup>3</sup> / <sub>4</sub>	Gualandi	WIN209 Fiocchi 616	19.0	6150				
	1250	3	Gualandi	WIN209 Fiocchi 616	20.0	6600				
	1300	3 <sup>1</sup> / <sub>4</sub>	Gualandi	WIN209 Fiocchi 616	20.5	7150				
	1350		Gualandi	WIN209 Fiocchi 616	21.5	7700				
	1400		Gualandi	WIN209 Fiocchi 616	22.5	8250				
1	1200	2 <sup>3</sup> / <sub>4</sub>	Gualandi	WIN209 Fiocchi 616	19.5	7750	21.5	6600		
	1250	3	Gualandi	WIN209 Fiocchi 616	20.0	8200	22.5	7250		
	1300	3 <sup>1</sup> / <sub>4</sub>	Gualandi	WIN209 Fiocchi 616	21.0	9050	23.5	8050		
	1350		Gualandi	WIN209 Fiocchi 616	22.0	9800	23.5	9500		
1 <sup>1</sup> / <sub>8</sub>	1200	2 <sup>3</sup> / <sub>4</sub>	Gualandi	WIN209 Fiocchi 616			22.0	8500		
	1255	3	Gualandi	WIN209 Fiocchi 616			22.8	9500		
	1300	3 <sup>1</sup> / <sub>4</sub>	Gualandi	WIN209 Fiocchi 616	NR	NR	23.5	11000		

NR = Not Recommended

# SHOT GUN DATA

12 Gauge 2<sup>3</sup>/<sub>4</sub>" (70mm) Plastic Reiffenhauser style cases (Fiocchi Cheddite)

SHOT WEIGHT (ounces)	NOMINAL VELOCITY (ft./sec)	APPROX. DRAM EQUIV.	WAD TYPE	PRIMER TYPE	AS-30N		AS-50N		AP-70N	
					WEIGHT (grain)	PRESS (psi)	WEIGHT (grain)	PRESS (psi)	WEIGHT (grain)	PRESS (psi)
1	1200		WAA12SL	WIN209	16.8	6200				
	1250		WAA12SL	WIN209	18.0	7200				
	1300		WAA12SL	WIN209	19.0	8000				
	1180		WAA12SL	WIN209	17.1	7800	19.0	7100		
	1235		WAA12SL	WIN209	18.5	9200	20.0	8600		
	1290		WAA12SL	WIN209	19.3	1060	21.1	9600		
1 <sup>1</sup> / <sub>8</sub>	1090		WAA12	WIN209	NR	NR	19.2	7000		
	1145		WAA12	WIN209	NR	NR	19.7	7400		
	1200		WAA12	WIN209	NR	NR	21.0	8500		
	1200		WAA12	WIN209	NR	NR			23.3	9100
	1255		WAA12	WIN209	NR	NR			24.0	9600
	1310		WAA12	WIN209	NR	NR			25.0	10800
1 <sup>1</sup> / <sub>4</sub>	1220		WAA12F114	Fiocchi 616					24.0	10900

# SHOT GUN DATA

## 12 Gauge 2<sup>3</sup>/<sub>4</sub>" (70mm) ACTIV Plastic Cases

SHOT WEIGHT (ounces)	NOMINAL VELOCITY (ft/sec)	APPROX. DRAM EQUIV.	WAD TYPE	PRIMER TYPE	AS-30N		AS-50N		AP-70N	
					WEIGHT (grain)	PRESS (psi)	WEIGHT (grain)	PRESS (psi)	WEIGHT (grain)	PRESS (psi)
<b>7/8</b>	1200		Gualandi	WIN209 Fiocchi 616	19.0	6150				
	1250		Gualandi	WIN209 Fiocchi 616	20.0	6600				
	1300		Gualandi	WIN209 Fiocchi 616	20.5	7150				
	1350		Gualandi	WIN209 Fiocchi 616	21.5	7700				
	1400		Gualandi	WIN209 Fiocchi 616	22.5	8250				
<b>1</b>	1200	2 <sup>3</sup> / <sub>4</sub>	Gualandi	WIN209 Fiocchi 616	19.0	8100	21.0	7050		
	1250	3	Gualandi	WIN209 Fiocchi 616	19.8	9000	21.6	7850		
	1300	3 <sup>1</sup> / <sub>4</sub>	Gualandi	WIN209 Fiocchi 616	21.0	10200	22.6	8700		
<b>1<sup>1</sup>/<sub>8</sub></b>	1200	3	Gualandi	WIN209 Fiocchi 616	18.7	11250	21.0	7050		
	1250	2 <sup>3</sup> / <sub>4</sub>	Gualandi	WIN209 Fiocchi 616	21.6	8550	21.0	6500	26.0	8800
	1300	3 <sup>1</sup> / <sub>4</sub>	Gualandi	WIN209 Fiocchi 616	NR	NR	22.6	8850	27.0	9850
<b>1<sup>1</sup>/<sub>4</sub></b>	1200		Gualandi	WIN209 Fiocchi 616	NR	NR	NR	NR	25.5	9200
	1250		Gualandi	WIN209 Fiocchi 616	NR	NR	NR	NR	26.4	10150
	1300		Gualandi	WIN209 Fiocchi 616	NR	NR	NR	NR	27.5	10900

NR = Not Recommended

# SHOT GUN DATA

## 16 Gauge 2<sup>3</sup>/<sub>4</sub>" (70mm) Winchester AA Plastic Compression-Formed Cases

SHOT WEIGHT (ounces)	NOMINAL VELOCITY (ft./sec)	APPROX. DRAM EQUIV.	WAD TYPE	PRIMER TYPE	AS-30N		AS-50N		AP-70N	
					WEIGHT (grain)	PRESS (psi)	WEIGHT (grain)	PRESS (psi)	WEIGHT (grain)	PRESS (psi)
1	1165	2 <sup>1</sup> / <sub>2</sub>	WAA16	WIN209	NR	NR	NR	NR	19.0	9200
	1220	2 <sup>3</sup> / <sub>4</sub>	WAA16	WIN209	NR	NR	NR	NR	20.0	10300
	1275		WAA16	WIN209	NR	NR	NR	NR	20.7	11000

## 20 Gauge 2<sup>3</sup>/<sub>4</sub>" (70mm) Winchester AA Plastic Compression-Formed Cases

SHOT WEIGHT (ounces)	NOMINAL VELOCITY (ft./sec)	APPROX. DRAM EQUIV.	WAD TYPE	PRIMER TYPE	AS-50N		AP-70N	
					WEIGHT (grain)	PRESS (psi)	WEIGHT (grain)	PRESS (psi)
3/4	1180		WAA20	WIN209 CC1209	NR	NR	15.0	8700
	1245		WAA20	WIN209 CC1209	NR	NR	16.0	9820
	1320		WAA20	WIN209 CC1209	NR	NR	17.0	11050
7/8	1125	2 <sup>1</sup> / <sub>4</sub>	WAA20	WIN209 CC1209	NR	NR	15.0	10100
	1160		WAA20	WIN209 CC1209	NR	NR	15.5	10700
	1200	Skeet	WAA20	WIN209 CC1209	NR	NR	16.0	11400

# SHOT GUN DATA

## 20 Gauge 2<sup>3</sup>/<sub>4</sub>" (70mm) ACTIV Plastic Cases

SHOT WEIGHT (ounces)	NOMINAL VELOCITY (ft/sec)	APPROX. DRAM EQUIV.	WAD TYPE	PRIMER TYPE	AS-30N		AS-50N		AP-70N	
					WEIGHT (grain)	PRESS (psi)	WEIGHT (grain)	PRESS (psi)	WEIGHT (grain)	PRESS (psi)
7/8	1200		WAA20	WIN209	NR	NR	NR	NR	18.5	8300
1	1165		WAA20F1	CCI209	NR	NR	NR	NR	18.5	8700
	1220		WAA20F1	CCI209	NR	NR	NR	NR	19.0	9600
3/4	<b>28 Gauge 2<sup>3</sup>/<sub>4</sub>" (70mm) Winchester AA Plastic Compression-Formed Cases</b>									
	1200	Skeet	WWAA28	WIN209	NR	NR	NR	NR	13.0	10800

NR = Not Recommended

## 410 Bore 2<sup>1</sup>/<sub>2</sub>" Winchester AA Plastic Compression-Formed Cases

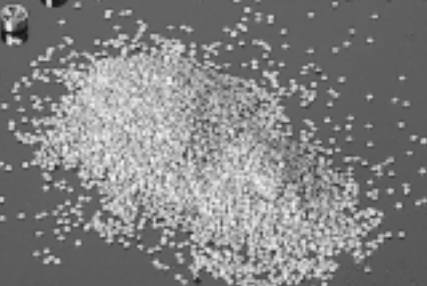
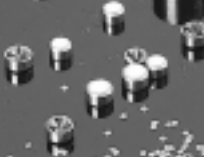
SHOT WEIGHT (ounces)	NOMINAL VELOCITY (ft/sec)	APPROX. DRAM EQUIV.	WAD TYPE	PRIMER TYPE	AR2205	
					WEIGHT (grain)	PRESS (psi)
1/2	1200		WWAA41	WIN209	14.0	10500
				CCI209M	14.0	10500



# Pistol Data

The loads shown here are maximums. Pressure variations due to different components, weapons, weapon condition and powder lots are relatively greater for pistols than for rifles. Therefore, it is essential that the initial load used in working up your safe load with your components must be 20% less than listed here. Any increases on the starting load should not be more than 2% at a time. The pistol loads shown are for jacketed projectiles unless otherwise specified.

**NEVER EXCEED  
THE MAXIMUM  
RECOMMENDED LOADS.**



# PISTOL DATA

CALIBRE	BULLET WEIGHT (Grains)	POWDER TYPE	MAX. CHARGE WEIGHT (Grains)	NOM. VELOCITY	CALIBRE	BULLET WEIGHT (Grains)	POWDER TYPE	MAX. CHARGE WEIGHT (Grains)	NOM. VELOCITY
<b>.17 Bumble Bee</b> 10" Barrel	25	AR2205	7	2,331		75	AR2205	15	2,120
						87	AR2205	14	2,040
<b>.22 Hornet (TCU)</b> 10" Barrel	45	AR2205	11	2,250		87	AR2207	15	2,007
					<b>7mm (TCU)</b>	100	AR2207	24	2,176
<b>.22 Remington Jet (TCU)</b> 10" Barrel	40	AP-100	8	1,800	14 "Wichita" Barrel	115-120	AR2205	18	1,914
	40	AR2205	13	2,400		115-120	AR2207	23	2,075
	45	AP-100	7.5	1,700		130	AR2205	17	1,675
	45	AR2205	12.5	2,300		130	AR2207	22	1,935
<b>.221 Remington Fireball</b> 10 3/4 (XP-100)" Barrel	40	AR2205	17	3,033		139-140	AR2205	16.5	1,635
	45	AR2205	16	2,697		139-140	AR2207	21	1,904
	45	AR2207	17	2,632		145-150	AR2205	16	1,597
	50	AR2205	16	2,672		145-150	AR2207	20.5	1,835
	50	AR2207	16.5	2,539		154-162	AR2205	15	1,474
	52-53	AR2205	16	2,603		154-162	AR2207	19.5	1,729
	52-53	AR2207	16.5	2,537		168	AR2207	18.5	1,699
	55	AR2205	15.5	2,503		175	AR2207	18	1,522
	55	AR2207	16	2,441	<b>7mm BR Remington</b>	100	AR2207	26	2,429
	60-63	AR2205	15	2,414	14 "Wichita" Barrel	168	AR2207	21	1,799
60-63	AR2207	16	2,399	175		AR2207	20	1,684	
<b>.222 Remington (TCU)</b> 10" Barrel	45	AR2207	20.5	2,575		115-120	AR2207	24.5	2,250
	50	AR2207	20	2,525		139-140	AR2207	23	1,977
	55	AR2207	19.2	2,325		145-150	AR2207	22	1,882
	52-53	AR2207	19.6	2,425		154-162	AR2207	22	1,805
	55	AR2207	19.2	2,325	<b>7mm-08 (Silhouette)</b>	100	AR2208	45.7	2,931
<b>.25 ACP</b> 2" Barrel	35	AP-70N	1.7	922	15" Barrel	130	AR2208	43.5	2,710
	50	AP-30N	1.05	750		139	AR2208	43.5	2,612
	50	AP-50N	1.2	750		139	AR2209	50.00C	2,581
	50	AP-70N	1.4	751		150	AR2208	41.3	2,508
						150	AR2209	48.50C	2,552
<b>.256 Winchester Magnum</b> 10" Barrel	60	AR2205	16	2,386		162	AR2208	41	2,468
	60	AR2207	18	1,704		162	AR2209	48.00C	2,472

(C) = Compressed load

Sequence of numbers is correct in order of decreasing burning rates.

# PISTOL DATA

CALIBRE	BULLET WEIGHT (Grains)	POWDER TYPE	MAX. CHARGE WEIGHT (Grains)	NOM. VELOCITY	CALIBRE	BULLET WEIGHT (Grains)	POWDER TYPE	MAX. CHARGE WEIGHT (Grains)	NOM. VELOCITY
<b>7mm-08 (Silhouette)</b>	168	AR2208	40	2,380	<b>.32 Smith &amp; Wesson</b>	85	AP-70N	3	865
15" Barrel (cont)	168	AR2209	47.20C	2,404	<b>Long</b>	L 90	AP-70N	2.7	844
	175	AR2208	37.5	2,236	5.32" Barrel	90	AP-70N	2.9	838
	175	AR2209	45.00C	2,325		L 98	AP-70N	2.2	830
<b>.30 Luger (7.65mm Parabellum)</b>	85	AP-30N	3.6	1,000	<b>.32 H &amp; R Magnum</b>	85	AP-70N	4.3	1,123
	85	AP-50N	4	1,000	5" Barrel	85	AR2205	9.5	1,151
4 1/2" Barrel	95	AP-30N	3.3	925		L 90	AP-70N	3.2	908
	95	AP-50N	3.8	925		90	AP-70N	4	1,072
<b>.30 M1 Carbine (pistol)</b>	85	AR2205	15.5C	1,745		90	AR2205	10	1,079
	100	AR2205	14.50C	1,621		100	AP-70N	3.7	973
7" Barrel	110	AR2205	14.50C	1,602		100	AR2205	10	1,060
<b>.30 Herrett</b>	100	AR2205	23	2,360	<b>.32-20 (Pistol)</b>	L 115	AP-70N	3.2	869
10 T-C" Barrel	110	AR2205	22	2,321	5 1/2" Barrel				
	125	AR2205	20	2,004	<b>.380 Auto (9mm Kurz)</b>	90	AP-30N	2.7	850
	130	AR2205	19	1,960	3 3/4" Barrel	90	AP-50N	3	800
	150	AR2205	18	1,752		90	AP-70N	3.6	955
	150	AR2207	22	1,797		90	AP-100	5.1	850
	165	AR2207	18.5	1,710		100	AP-30N	2.5	750
<b>.30 Mauser (7.6mm Mauser)</b>	85	AP-30N	4.1	1,200		100	AP-50N	2.8	725
5 1/2" Barrel	85	AP-50N	4.5	1,225		100	AP-70N	3.4	889
	95	AP-30N	3.4	1,075		100	AP-100	4.7	775
	95	AP-50N	3.8	1,100		115	AP-30N	2.1	700
<b>.30-30 Winchester (TCU)</b>	130	AR2208	36.00C	2,238		115	AP-50N	2.3	725
	150	AR2208	34.5	2,119		115	AP-70N	2.6	725
14" Barrel	170	AR2208	33	2,023		115	AP-100	4.4	750
<b>.32 ACP (7.65mm Browning)</b>	71	AS-30N	1.7	830	<b>9mm Luger (9mm Parabellum)</b>	90	AP-70N	5.5	1,266
4" Barrel	71	AP-70N	2.4	881	4" Barrel	100	AP-70N	5.3	1,212
<b>.32 Smith &amp; Wesson</b>	85	AS-30N	1.2	600		115	AP-70N	5	1,149
4" Barrel	85	AP-50N	1.4	650		L 120	AP-50N	3.5	1,075
	85	AP-70N	1.8	730		L 120	AP-100	6	1,180
						124	AP-70N	4.9	1,118
						L 125	AP-50N	3.2	1,000

(C) = Compressed load L = Lead Projectile

Sequence of numbers is correct in order of decreasing burning rates.

# PISTOL DATA

CALIBRE	BULLET WEIGHT (Grains)	POWDER TYPE	MAX. CHARGE WEIGHT (Grains)	NOM. VELOCITY	CALIBRE	BULLET WEIGHT (Grains)	POWDER TYPE	MAX. CHARGE WEIGHT (Grains)	NOM. VELOCITY	
<b>9mm Luger</b> <b>(9mm Parabellum)</b> 4" Barrel	L 125	AP-70N	3.8	1,055		L 158	AP-50N	2.8	700	
	L 125	AP-90	5.2	1,135		L 158	AP-70N	3.3	700	
	L 125	AP-100	6.2	1,135		L 158	AP-90	3.8	700	
	130	AP-70N	4.7	1,058		L 158	AP-100	4.1	700	
	L 135	AP-30N	2.9	905		<b>.38 Special</b> 7.7" Barrel	110	AS-30N	4.2	1,073
	L 135	AP-50N	3.3	955			110	AP-70N	5.6	1,143
	L 135	AP-70N	4.2	1,050			L 125	AS-30N	3.5	978
	L 135	AP-90	5.2	1,080			125	AS-30N	3.9	937
	L 135	AP-100	6	1,100			L 125	AP-70N	4.7	1,036
	147	AP-70N	3.3	869			125	AP-70N	5.2	1,019
<b>.38 ACP</b> 3.75" Barrel	L 90	AP-70N	3.6	955	L 135	AS-30N	3.3	910		
	L 95	AP-70N	3.5	901	L 135	AP-70N	4.6	1,025		
	L 100	AP-70N	3.4	889	140	AS-30N	3.7	869		
<b>.38 Super Auto</b> 5" Barrel	90	AP-70N	6.3	1,352	140	AP-70N	4.8	939		
	100	AP-70N	6	1,327	146	AP-70N	4.5	933		
	115	AP-70N	5.5	1,225	146	AR2205	10.7	979		
	L 125	AP-70N	5.3	1,171	L 148	AS-30N	2.5	836		
	125	AP-70N	5.5	1,179	L 148	AP-70N	3.8	940		
	130	AP-70N	5.3	1,124	L 158	AS-30N	3.1	871		
	147	AP-70N	4.8	1,017	158	AS-30N	3.1	721		
<b>.38 Smith &amp; Wesson</b> 4" Barrel	110	AP-30N	3.1	950	L 158	AP-70N	4.5	974		
	110	AP-50N	3.5	1,000	158	AP-70N	4.4	778		
	110	AP-70N	4.1	1,000	L 158	AR2205	10	983		
	110	AP-90	5.1	975	158	AR2205	10	864		
	125	AP-30N	3	900	170	AP-70N	4.2	823		
	125	AP-50N	3.4	950	170	AR2205	9.8	888		
	125	AP-70N	4	950	<b>.38 Special + P</b> 7.7" Barrel	110	AP-70N	6	1,204	
	125	AP-90	5	925		125	AP-70N	5.4	1,072	
	L 148	AP-50N	2.9	750		140	AP-70N	5.1	1,022	
	L 148	AP-70N	3.4	750	140	AR2205	12.4	1,121		
	L 148	AP-90	4	750	146	AP-70N	4.7	987		
	L 148	AP-100	4.3	750	146	AR2205	12	1,085		
						158	AP-70N	4.7	837	

(C) = Compressed load L = Lead Projectile

**WARNING: 38 Special + P Loads are for use in modern arms (not aluminium frame) in good condition.**

Sequence of numbers is correct in order of decreasing burning rates.

# PISTOL DATA

CALIBRE	BULLET WEIGHT (Grains)	POWDER TYPE	MAX. CHARGE WEIGHT (Grains)	NOM. VELOCITY	CALIBRE	BULLET WEIGHT (Grains)	POWDER TYPE	MAX. CHARGE WEIGHT (Grains)	NOM. VELOCITY	
<b>.38 Special + P</b> 7.7" Barrel <i>See Warning</i>	158	AR2205	11	964		140	AR2205	24	1,985	
	170	AP-70N	4.3	847		150	AR2205	23	1,923	
	170	AR2205	10.6	950		160	AR2205	22.5	1,814	
<b>.357 SIG</b> 4" Barrel	90	AP-70N	7	1,511		170	AR2205	21	1,748	
	115	AP-70N	6.1	1,300		180	AR2205	20	1,645	
	124	AP-70N	5.8	1,235		200	AR2205	18	1,440	
	147	AP-70N	4.9	1,062		<b>.357 Herrett (TCU)</b> 10" Barrel	110	AR2205	33	2,380
<b>.357 Magnum</b> 10" Barrel	110	AP-70N	8	1,536			125	AR2205	32	2,329
	110	AR2205	21	1,900			140	AR2205	30	2,198
	L 125	AS-30N	5.3	1,260			150	AR2205	29	2,142
	L 125	AP-70N	6.8	1,401	158		AR2205	28	2,022	
	125	AP-70N	7.6	1,453	<b>.375 JDJ</b> 4" Barrel	220	AR2207	44	2,115	
	125	AR2205	20	1,839		<b>.38/40 Winchester</b> 5 1/2" Barrel	L 180	AS-30N	5.5	890
	L 135	AS-30N	5.1	1,207	L 180		AP-70N	7.5	955	
L 135	AP-70N	6.5	1,314	<b>.40 Smith &amp; Wesson</b> 4" Barrel	L 140	AS-30N	4	1,035		
140	AP-70N	7	1,299		L 140	AP-50N	4.5	1,105		
140	AR2205	18	1,685		L 140	AP-70N	5.5	1,145		
146	AP-70N	6.5	1,261		L 155	AS-30N	4	970		
146	AR2205	16	1,566		L 155	AP-50N	4.6	1,015		
L 148	AP-70N	4	989		L 155	AP-70N	5.6	1,100		
150	AP-70N	6.7	1,255		L 155	AP-90	6.8	1,140		
150	AR2205	16.5	1,583		L 155	AP-100	8.1	1,180		
L 158	AS-30N	4.6	1,079		L 170	AS-30N	3.4	865		
L 158	AP-70N	6.2	1,247		L 170	AP-50N	3.8	895		
158	AP-70N	6.3	1,133		L 170	AP-70N	4.8	1,005		
158	AR2205	16	1,520		L 170	AP-90	5.9	1,045		
170	AR2205	14.5	1,395	L 170	AP-100	6.9	1,070			
180	AR2205	13.7	1,308	L 180	AP-70N	4.8	1,010			
<b>.357 Remington Maximum</b> 10 Ruger" Barrel	110	AR2205	28	2,314	L 180	AP-100	6.7	1,065		
	125	AR2205	27	2,126						

(C) = Compressed load L = Lead Projectile

**WARNING: 38 Special + P Loads are for use in modern arms (not aluminium frame) in good condition.**

Sequence of numbers is correct in order of decreasing burning rates.

# PISTOL DATA

CALIBRE	BULLET WEIGHT (Grains)	POWDER TYPE	MAX. CHARGE WEIGHT (Grains)	NOM. VELOCITY	CALIBRE	BULLET WEIGHT (Grains)	POWDER TYPE	MAX. CHARGE WEIGHT (Grains)	NOM. VELOCITY	
<b>.40 Smith &amp; Wesson</b> 4" Barrel <i>See Warning</i>	135	AS-30N	4.5	1,071		220	AR2205	20	1,433	
	135	AP-70N	7.5	1,324		L 245	AP-70N	8	1,164	
	155	AS-30N	4	937		L 245	AR2205	20	1,444	
	155	AP-70N	6.6	1,186		<b>.44/40 Winchester</b> 7 Test" Barrel	L 200	AS-30N	5.5	890
	180	AS-30N	3.5	847			L 200	AP-50N	6.5	920
	180	AP-70N	5.8	1,046			L 200	AP-70N	7.3	777
200	AP-70N	4.7	903	200	AR2205		18	910		
				L 200	AR2205		20	1,030		
<b>10mm Auto</b> 5" Barrel	135	AP-70N	8	1,416	L 215	AP-50N	6.4	940		
	155	AP-70N	7.5	1,279	<b>.44 Special</b> 8" Barrel	L 165	AS-30N	4.6	1,009	
	170	AP-70N	6.7	1,187		L 165	AP-70N	6.3	1,042	
	180	AP-70N	6.4	1,122		L 185	AS-30N	4.2	930	
	200	AP-70N	5.9	1,015		L 185	AP-70N	6.4	1,031	
				L 200		AS-30N	4.5	891		
<b>.41 Action Express</b> 5" Barrel	150	AP-70N	6.5	1,025	L 200	AP-70N	6.5	960		
	L 150	AP-70N	6.3	1,125	200	AP-70N	6.8	967		
	150	AP-90	8.3	1,050	L 200	AR2205	15	1,051		
	L 150	AP-90	8	1,175	200	AR2205	15	1,021		
	150	AP-100	9.2	1,075	L 240	AS-30N	4	771		
	L 150	AP-100	9.0	1,200	L 240	AP-70N	5.6	873		
	170	AP-70N	5.1	900	L 240	AR2205	13.2	947		
	L 170	AP-70N	4.9	1,000	<b>.44 Remington Magnum</b> 8.275" Barrel	L 165	AS-30N	5.5	1,064	
	170	AP-90	6.1	925		L 165	AP-70N	7.2	1,059	
	L 170	AP-90	5.9	1,050		180	AP-70N	11.3	1,463	
	170	AP-100	6.7	925		180	AR2205	29	1,708	
	L 170	AP-100	6.5	1,050		L 185	AS-30N	6	1,043	
	L 200	AP-70N	4.4	875	L 185	AP-70N	7.4	1,070		
	L 200	AP-90	5.5	900	L 200	AS-30N	6.4	1,028		
	L 200	AP-100	6	925	L 200	AP-70N	7.8	1,045		
<b>.41 Magnum</b> 10.125" Barrel	170	AP-70N	10.3	1,488	200	AP-70N	11.1	1,398		
	170	AR2205	24.9	1,745	200	AR2205	27	1,686		
	210	AP-70N	8.9	1,243	210	AP-70N	11	1,365		
	210	AR2205	21.5	1,518	210	AR2205	27	1,624		
	220	AP-70N	8.5	1,178						

(C) = Compressed load L = Lead Projectile

**WARNING: This data is only for use in firearms with barrels which fully support the cartridge in the chamber.**

Sequence of numbers is correct in order of decreasing burning rates.

# PISTOL DATA

CALIBRE	BULLET WEIGHT (Grains)	POWDER TYPE	MAX. CHARGE WEIGHT (Grains)	NOM. VELOCITY	CALIBRE	BULLET WEIGHT (Grains)	POWDER TYPE	MAX. CHARGE WEIGHT (Grains)	NOM. VELOCITY
<b>.44 Remington Magnum</b> 8.275" Barrel (cont)	225	AP-70N	10.5	1,291		L 200	AS-30N	4.3	888
	225	AR2205	25.5	1,537		L 200	AP-50N	5	960
	L 240	AS-30N	6.2	940		200	AP-70N	6.7	930
	L 240	AP-70N	10.2	1,276		L 200	AP-70N	6.5	1,020
	240	AP-70N	10.2	1,246		230	AS-30N	4	732
	240	AR2205	24	1,458		230	AP-70N	6	853
	270	AP-70N	9.5	1,128		L 230	AP-70N	6.1	965
	270	AR2205	22.5	1,425	<b>.45 Colt</b> 7.25" Barrel	160	AS-30N	6.4	1,083
	280	AP-70N	9.7	1,090		160	AP-70N	9.5	1,197
	280	AR2205	22	1,373		180	AS-30N	6	1,016
	300	AP-70N	9.6	1,113		180	AP-70N	9.2	1,161
	300	AR2205	20	1,312		L 200	AS-30N	5.9	931
<b>.44 Magnum (TCU)</b> 14" Barrel	180	AP-100	19	1,750		L 200	AP-70N	8.8	1,067
	180	AR2205	28.5	1,825		200	AP-70N	9	1,068
	200	AP-100	18.5	1,700		L 215	AS-30N	5.7	889
	200	AR2205	27	1,750		L 215	AP-70N	8.6	1,001
	225	AP-100	17.2	1,675		230	AS-30N	5.4	865
	225	AR2205	15	1,675		230	AP-70N	8.1	975
	240	AP-100	16.5	1,625		250	AS-30N	5.1	817
	240	AR2205	23.5	1,625		250	AP-70N	7.8	941
	265	AP-100	15.5	1,450	<b>.45 Winchester Magnum</b> 5" Barrel	225-230	AR2205	25	1,259
	265	AR2205	22	1,475		240	AR2205	25	1,266
<b>.44 Auto Magnum</b> 6 TDE" Barrel	180	AR2205	27	1,478		250	AR2205	24	1,239
	200	AR2205	26	1,427		260	AR2205	23	1,209
	225	AR2205	22	1,269	<b>.45 Winchester Magnum (TCU)</b> 14" Barrel	185	AP-90	15.4	1,625
	240	AR2205	21	1,183		185	AP-100	17	1,650
<b>.45 ACP</b> 5" Barrel	L 155	AS-30N	5.2	1,080		185	AR2205	26	1,600
	L 155	AP-50N	6.2	1,175		200	AP-90	14.8	1,500
	L 155	AP-70N	7.6	1,195		200	AP-100	16.4	1,525
	185	AS-30N	4.9	981		200	AR2205	25	1,500
	185	AP-50N	5.8	1,030		230	AP-90	14.2	1,400
	185	AP-70N	7.2	993					
	200	AS-30N	4.3	785					

(C) = Compressed load L = Lead Projectile  
Sequence of numbers is correct in order of decreasing burning rates.



# PISTOL DATA

CALIBRE	BULLET WEIGHT (Grains)	POWDER TYPE	MAX. CHARGE WEIGHT (Grains)	NOM. VELOCITY	CALIBRE	BULLET WEIGHT (Grains)	POWDER TYPE	MAX. CHARGE WEIGHT (Grains)	NOM. VELOCITY
<b>.45 Winchester Magnum (TCU)</b> 14" Barrel	230	AP-100	15.6	1,425		250	AP-70N	12	1,290
	230	AR2205	24	1,400		250	AR2205	28.50C	1,685
	250	AP-90	13	1,300		260	AP-70N	11.5	1,245
	250	AP-100	14.5	1,325		260	AR2205	33.00C	1,762
	250	AR2205	23	1,325		300	AR2205	31.00C	1,702
<b>.454 Casull Magnum</b> 9.37" Barrel	240	AP-70N	11.5	1,325	<b>.50 Action Express</b> 6" Barrel	325	AR2205	30.8	1,294
	240	AR2205	34.00C	1,834					

(C) = Compressed load

Sequence of numbers is correct in order of decreasing burning rates.

# Rifle Data

The loads shown here are maximum. Initial loads for working up your safe load with your components in your weapon should be 10% less than shown with subsequent increases of about 3% at a time.

The rifle loads shown are for jacketed projectiles unless otherwise specified.

**NEVER EXCEED  
THE MAXIMUM  
RECOMMENDED LOADS.**



# RIFLE DATA

CALIBRE	BULLET WEIGHT (Grains)	POWDER TYPE	MAX. CHARGE WEIGHT (Grains)	NOM. VELOCITY	CALIBRE	BULLET WEIGHT (Grains)	POWDER TYPE	MAX. CHARGE WEIGHT (Grains)	NOM. VELOCITY
<b>17 Hornet (Ackley)</b>	25	AR2205	10	3,100		55	AR2205	10.5	2,400
24" Barrel	25	AR2207	11	3,100		55	AR2207	11	2,400
<b>17 Bee (Ackley)</b>	25	AR2205	11	3,131	<b>218 Bee</b>	40	AR2205	12	2,760
22" Barrel	25	AR2207	13.5	3,365		40	AR2207	14	2,792
<b>17 Mach IV</b>	25	AR2207	16	3,700	26" Barrel	45	AR2207	14	2,779
24" Barrel	25	AR2206	18.5	3,700		50	AR2207	13.5	2,582
<b>17 - 222</b>	25	AR2207	17.2	3,601		55	AR2207	13.5	2,567
24" Barrel	25	AR2206	20	3,625	<b>222 Remington</b>	40	AR2205	19	3,455
	25	AR2208	21	3,675	24" Barrel	40	AR2207	22	3,605
<b>17 Remington</b>	25	AR2207	18.5	3,900		40	BM-1	23.5	3,525
24" Barrel	25	BM1	20.5	3,965		40	BM-2	25.5C	3,535
	25	BM2	21.5	3,985		40	AR2206	24.5C	3,365
	25	AR2206	22	4,000		40	AR2208	25.00C	3,195
	25	AR2208	23	4,025		45	AR2205	17.8	3,225
	25	AR2209	25.50C	3,765		45	AR2207	21.5	3,395
<b>17-223</b>	25	AR2206	22.2	3,975		45	BM-1	24	3,405
24" Barrel	25	AR2207	23.5	3,995		45	BM-2	25.0C	3,340
<b>22 Hornet</b>	40	AR2205	10.2	2,567		50	AR2207	20.8	3,250
24" Barrel	40	AR2207	11.50C	2,488		50	BM-1	22.8	3,265
	45	AR2205	9.8	2,484		50	BM-2	24.4	3,250
	45	AR2207	11.50C	2,400		50	AR2206	24.5C	3,265
	50	AR2205	9.4	2,256		50	AR2208	25.00C	3,155
	50	AR2207	11.50C	2,296		52	AR2207	20.3	3,185
	53	AR2205	8.7	2,062		52	BM1	22	3,130
	53	AR2207	11	2,165		52	BM2	23.4	3,135
	55	AR2205	9	2,095		52	AR2206	23	3,065
	55	AR2207	11.5	2,273		52	AR2208	25.00C	3,140
<b>22 K Hornet</b>	40	AR2205	11.5	2,900		53	AR2205	17	2,990
24" Barrel	40	AR2207	12.5	2,900		53	BM1	21.6	3,060
	45	AR2205	11	2,750		53	BM2	22	2,965
	45	AR2207	12	2,750		55	AR2207	19.5	3,045
	50	AR2205	10.5	2,600		55	BM1	22	3,055
	50	AR2207	11.5	2,600		55	AR2206	23.7	3,125
						55	AR2208	24.5C	3,075

(C) = Compressed load

Sequence of numbers is correct in order of decreasing burning rates.

# RIFLE DATA

CALIBRE	BULLET WEIGHT (Grains)	POWDER TYPE	MAX. CHARGE WEIGHT (Grains)	NOM. VELOCITY	CALIBRE	BULLET WEIGHT (Grains)	POWDER TYPE	MAX. CHARGE WEIGHT (Grains)	NOM. VELOCITY
<b>223 Remington</b> 24" Barrel (cont)	60	BM2	23.5	3,100	<b>222 Remington Magnum</b> 26" Barrel	40	AR2205	17	3,062
	60-63	AR2207	18.5	2,850		40	AR2207	24.5	3,760
	60-63	AR2206	23	2,925		45	AR2207	24	3,641
<b>223 Remington</b> <b>(5.56mm x 45)</b> 24" Barrel	40	AR2205	20	3,545		50	AR2207	23.5	3,379
	40	AR2207	24	3,755		52-53	AR2207	23	3,282
	40	BM1	26	3,695		55	AR2207	23	3,222
	40	BM2	27.50C	3,690		60-64	AR2207	20.5	3,019
	40	AR2206	27.50C	3,690		70	AR2209	27	2,570
	40	AR2208	27.50C	3,460		70	AR2213SC	27	2,359
	50	AR2207	22.5	3,380		<b>22 Waldog</b> 24" Barrel	52-53	AR2207	21
	50	BM1	24.8	3,385	52-53		AR2206	23.5	3,000
	50	BM2	26.3	3,410	52-53		AR2208	24.5	3,000
	50	AR2206	26.5C	3,455	<b>22 PPC</b> 24" Barrel	40	AR2208	29.5C	3,560
	50	AR2208	27.5C	3,410		50	AR2207	24.0	3,325
	52	AR2207	22.5	3,315		50	BM1	26	3,350
	52	BM1	24.5	3,340		50	BM2	29	3,430
	52	BM2	26.2	3,365		50	AR2206	27.5	3,350
52	AR2206	26	3,405	50		AR2208	29.5C	3,408	
52	AR2208	27.00C	3,330	52-53		AR2207	23.5	3,300	
55	AR2207	22	3,190	52-53		BM1	25.5	3,300	
55	BM1	24	3,175	52-53		BM2	28.5	3,368	
55	BM2	25.5	3,240	52-53		AR2208	28.5	3,363	
<b>1 in 10 twist or</b>	62	BM2	23.5	3,000	55	AR2208	28.5	3,317	
<b>faster required</b>	62	AR2206	24.5	3,075	<b>5.6mm x 50 Magnum</b> 24" Barrel	40	AR2206	29	3,630
<b>for this projectile.</b>	62	AR2208	25	3,055		45	AR2206	28.5	3,550
<b>1 in 10 twist or</b> <b>faster required</b> <b>for this projectile.</b>	69	BM2	23.5	2,870		45	AR2208	30	3,550
	69	AR2206	24	2,920		50	AR2206	28	3,500
	69	AR2208	25	2,920		50	AR2208	29.5	3,500
<b>1 in 8 twist or</b> <b>faster required</b> <b>for this projectile.</b>	80	BM-2	22	2,670		55	AR2206	27	3,300
	80	AR2206	22.2	2,690		55	AR2208	28.5	3,300
	80	AR2208	23.5	2,715		60	AR2208	27.5	3,250
						70	AR2208	26.5	3,100

(C) = Compressed load

Sequence of numbers is correct in order of decreasing burning rates.

# RIFLE DATA

CALIBRE	BULLET WEIGHT (Grains)	POWDER TYPE	MAX. CHARGE WEIGHT (Grains)	NOM. VELOCITY	CALIBRE	BULLET WEIGHT (Grains)	POWDER TYPE	MAX. CHARGE WEIGHT (Grains)	NOM. VELOCITY		
<b>219 Donaldson Wasp</b> 24" Barrel	40	AR2207	24	3,500		55	BM2	28	3,250		
	40	AR2206	27	3,500		55	AR2206	29	3,250		
	40	AR2208	28.5	3,500		55	AR2208	30	3,250		
	50	AR2207	23.5	3,400		55	AR2209	37	3,189		
	50	AR2206	26.5	3,400		55	AR2213SC	37	3,112		
	50	AR2208	28	3,400		60-63	BM2	27	3,180		
	52-53	AR2207	23	3,300		60-63	AR2206	28	3,180		
	52-53	AR2206	26	3,300		60-63	AR2208	29	3,180		
	52-53	AR2208	27.5	3,300		60-63	AR2209	36	3,120		
	55	AR2207	22.5	3,200		60-63	AR2213SC	36	3,068		
	55	AR2206	25.5	3,200		68-70	BM2	27	2,750		
	55	AR2208	27	3,200		68-70	AR2206	26	2,750		
	<b>219 Zipper</b> 24" Barrel	45	AR2207	22		3,200	68-70	AR2208	28	2,800	
		45	AR2206	25		3,200	68-70	AR2209	35	2,949	
45		AR2208	26	3,200	68-70	AR2213SC	35	2,831			
50		AR2207	21	3,000	<b>22/303 Sprinter</b> 24" Barrel	45	AR2206	31.5	3,450		
50		AR2206	24	3,000		45	AR2208	34	3,450		
50		AR2208	25	3,000		50	AR2206	30.5	3,200		
52-53		AR2207	20.5	2,900		50	AR2208	33	3,200		
52-53		AR2206	23.5	2,900		55	AR2206	29.5	3,000		
52-53		AR2208	24.5	2,900		55	AR2208	32	3,000		
55		AR2207	20	2,800		<b>22/303 Swift</b> 24" Barrel	45	AR2206	32	3,500	
55		AR2206	23	2,800			45	AR2208	36	3,500	
55		AR2208	24	2,800			50	AR2206	31	3,250	
<b>225 Winchester</b> 24" Barrel		40	AR2206	31			3,780	50	AR2208	35	3,250
		40	AR2208	33			3,760	55	AR2206	30	3,050
	45	AR2206	30	3,400			55	AR2208	34	3,050	
	45	AR2208	32	3,480			<b>22/303 Falcon</b> (Full Length) 24" Barrel	45	AR2206	33.5	3,600
	50	BM2	29	3,400				45	AR2208	37.5	3,600
	50	AR2206	30	3,450	50	AR2206		32.5	3,350		
	50	AR2208	32	3,450	50	AR2208		35.5	3,350		
	52-53	BM2	28.5	3,280	55	AR2206		31.5	3,100		
	52-53	AR2206	29	3,280	55	AR2208		34.5	3,100		
	52-53	AR2208	30.5	3,280							

(C) = Compressed load

Sequence of numbers is correct in order of decreasing burning rates.

# RIFLE DATA

CALIBRE	BULLET WEIGHT (Grains)	POWDER TYPE	MAX. CHARGE WEIGHT (Grains)	NOM. VELOCITY	CALIBRE	BULLET WEIGHT (Grains)	POWDER TYPE	MAX. CHARGE WEIGHT (Grains)	NOM. VELOCITY
224 Weatherby Magnum 24" Barrel	45	AR2206	30.5	3,500	22-250 Improved (Ackley) 26" Barrel	60-64	AR2208	34	3,426
	45	AR2208	31.5	3,500		60-64	AR2209	38	3,391
	50	AR2206	30.5	3,450		60-64	AR2213SC	41	3,441
	50	AR2208	31.5	3,450		68-70	AR2206	30	3,215
	52-53	AR2206	30	3,400		68-70	AR2209	36	3,129
	52-53	AR2208	31	3,400		68-70	AR2213SC	38	3,189
	55	AR2206	29.5	3,300		68-70	AR2217	38	3,187
	55	AR2208	30.5	3,300		50	AR2206	36.5	3,800
	55	AR2209	34	3,240		50	AR2208	39	3,800
	55	AR2213SC	34	3,200		50	AR2209	42.5	3,800
	60-63	AR2206	28.5	3,100		52-53	AR2206	35.5	3,750
	60-63	AR2208	29.5	3,100		52-53	AR2208	38	3,750
	60-63	AR2209	34	3,240		52-53	AR2209	41	3,750
	60-63	AR2213SC	33.5	3,041		55	AR2206	34.5	3,650
	68-70	AR2206	27	2,900		55	AR2208	37	3,650
	68-70	AR2208	28.5	2,900		55	AR2209	40	3,650
68-70	AR2209	32	2,777	60-63	AR2206	32.5	3,500		
68-70	AR2213SC	32	2,486	60-63	AR2208	35	3,500		
22-250 Remington 24" Barrel	40	BM2	37	4,165	60-63	AR2209	38	3,500	
	40	AR2206	37.5	4,250	68-70	AR2206	31.5	3,400	
	40	AR2208	38.8	4,225	68-70	AR2208	34	3,400	
	50	BM2	34	3,770	68-70	AR2209	37	3,400	
	50	AR2206	36	3,830	220 Swift 26" Barrel	40	AR2206	38	3,950
	50	AR2208	36.8	3,865		40	AR2208	40.5	4,113
	50	AR2209	41.00C	3,680		45	AR2206	37.5	3,800
	50	AR2213SC	42	3,473		45	AR2208	38.5	3,800
	52	AR2207	29	3,635		50	BM2	37.5	3,845
	52	BM2	34	3,775		50	AR2206	38.5	3,920
	52	AR2206	35.6	3,840		50	AR2208	40	3,925
	52	AR2208	36	3,795		50	AR2209	44.5C	3,770
	52	AR2209	41.00C	3,640		50	AR2213SC	44.5C	3,545
	55	BM2	32.5	3,600		52-55	AR2208	36	3,645
	55	AR2206	35.5	3,730		52-55	AR2209	42	3,619
	55	AR2208	36	3,730		52-55	AR2213SC	46	3,616
55	AR2209	41.0C	3,665						

(C) = Compressed load

Sequence of numbers is correct in order of decreasing burning rates.

# RIFLE DATA

CALIBRE	BULLET WEIGHT (Grains)	POWDER TYPE	MAX. CHARGE WEIGHT (Grains)	NOM. VELOCITY	CALIBRE	BULLET WEIGHT (Grains)	POWDER TYPE	MAX. CHARGE WEIGHT (Grains)	NOM. VELOCITY	
<b>220 Swift</b> 26" Barrel (cont)	60-64	AR2208	34	3,407	<b>6mm-222</b> 24" Barrel	60	AR2207	19	3,023	
	60-64	AR2209	39	3,474		75	AR2207	18	2,718	
	60-64	AR2213SC	46	3,586		85	AR2207	16.5	2,514	
	60-64	AR2217	45.5	3,343		100	AR2207	15	2,090	
	68-70	AR2208	33	3,247	<b>6mm-284</b> 24" Barrel	60	AR2213SC	58	3,807	
	68-70	AR2209	38	3,313		70	AR2213SC	56	3,762	
	68-70	AR2213	40	3,325		75	AR2213SC	55	3,691	
	68-70	AR2213SC	42	3,359		80	AR2213SC	55	3,683	
	68-70	AR2217	44	3,317		85	AR2213SC	53	3,471	
	<b>220 Jaybird</b> 26" Barrel	52	AR2209	47	3,992	90	AR2213SC	52	3,380	
55		AR2209	47	3,981	90	AR2217	57	3,314		
60		AR2209	45	3,763	100	AR2213SC	49	3,207		
60		AR2213SC	47	3,772	100	AR2217	55	3,229		
69		AR2213SC	47	3,654	105	AR2213SC	48	3,130		
<b>5.6mm X 57RWS</b> 26" Barrel	50	AR2208	37	3,700	105	AR2217	54	3,168		
	50	AR2209	41	3,700	115-117	AR2213SC	45	2,813		
	50	AR2213	46	3,700	115-117	AR2217	51	2,898		
<b>CAUTION:</b> <i>If reloading old style thick walled brass reduce these loads by at least 4 grains to avoid dangerous pressures.</i>	55	AR2208	36	3,550	<b>6mm x 45</b> 24" Barrel	60	AR2207	21.5	2,956	
	55	AR2209	40	3,550		68-70	AR2207	21	2,773	
	55	AR2213	45	3,550		75	AR2207	19.5	2,480	
	60	AR2208	35	3,450		80	AR2207	19	2,440	
	60	AR2209	39	3,450		85	AR2207	19	2,440	
	60	AR2213	44	3,450	90	AR2207	19	2,350		
	<b>NOTE WELL:</b> <i>Use Magnum Primers with AR2213 powder reloads.</i>	69/70	AR2208	34	3,300	<b>6mm x 47</b> 24" Barrel	60	BM1	25	3,100
		69/70	AR2209	38	3,300		60	AR2206	26.5	3,100
		69/70	AR2213	43	3,300		60	AR2208	28.5	3,100
		74	AR2209	37	3,250		70	BM1	24	2,900
74	AR2213	42	3,250	70	AR2206		26	2,900		
<b>22 Cheetah Mark II</b> 24" Barrel	50	AR2209	51	4,069	70	AR2208	28	2,900		
	55	AR2209	51	4,017						
<b>22 Savage Hi Power (5.6 x 52R)</b> 24" Barrel	70	AR2207	21.5	2,900						
	70	AR2208	24.5	2,900						

(C) = Compressed load

Sequence of numbers is correct in order of decreasing burning rates.



# RIFLE DATA

CALIBRE	BULLET WEIGHT (Grains)	POWDER TYPE	MAX. CHARGE WEIGHT (Grains)	NOM. VELOCITY	CALIBRE	BULLET WEIGHT (Grains)	POWDER TYPE	MAX. CHARGE WEIGHT (Grains)	NOM. VELOCITY	
<b>6mm x 47</b> 24" Barrel (cont)	75	BM1	23.5	2,700		75	AR2208	32.5	3,239	
	75	AR2206	25.5	2,700		80	AR2208	32.5	3,159	
	75	AR2208	27.5	2,700		85	AR2208	31	3,007	
	80	BM1	23	2,600		90	AR2208	30.2	2,886	
	80	AR2206	25	2,600		100	AR2208	28	2,649	
	80	AR2208	27	2,600		<b>6mm International</b> 20" Barrel	60	AR2207	30	3,300
	87-90	BM1	21.5	2,450			60	AR2206	33.5	3,300
	87-90	AR2206	23.5	2,450			60	AR2208	36	3,300
	87-90	AR2208	26	2,450			75	AR2207	27	2,900
<b>6mm PPC</b> 24" Barrel	60	AR2207	24	3,450	75		AR2206	30.5	2,900	
	60	BM1	25.5	3,450	75		AR2208	33	2,900	
	60	BM2	27.5	3,450	<b>243 Winchester</b> 24" Barrel	55	BM2	41.5	3,875	
	60	AR2206	29.5	3,450		55	AR2206	42	3,890	
	60	AR2208	30	3,450		55	AR2208	44	3,905	
	68-70	AR2207	25	3,165		55	AR2209	50.0C	3,825	
	68-70	BM1	27	3,135		60	AR2206	40	3,700	
	68-70	BM2	28.5	3,135		60	AR2208	41	3,650	
	68-70	AR2206	29	3,100	70	BM2	37	3,435		
	68-70	AR2208	29.5	3,050	70	AR2206	38.0	3,495		
	75	AR2207	21	2,780	70	AR2208	39.5	3,510		
	75	BM1	24	2,850	70	AR2209	43.5	3,190		
	75	BM2	27	2,850	70	AR2213SC	48	3,159		
	75	AR2206	28.5	2,850	75	AR2206	36.5	3,330		
	75	AR2208	28.5	2,850	75	AR2208	36.5	3,265		
	80	AR2207	21	2,641	75	AR2209	44.5	3,335		
	80	AR2208	28.0C	2,843	75	AR2213SC	48	3,177		
	85	AR2208	28.0C	2,848	80	AR2206	36	3,225		
<b>6 mm BR Remington</b> 24" Barrel	60	BM2	32.5	3,450	80	AR2208	38	3,260		
	60	AR2206	33	3,450	80	AR2209	45	3,290		
	60	AR2208	34	3,442	80	AR2213SC	47.3	3,295		
	68-70	BM2	30.5	3,200	87	AR2206	35	3,035		
	68-70	AR2206	31	3,200	87	AR2208	36	3,120		
	68-70	AR2208	34	3,342	87	AR2209	43	3,150		
	75	BM2	29	3,100	87	AR2213	44	3,170		
	75	AR2206	30	3,100	87	AR2214	49.00C	3,085		

(C) = Compressed load

Sequence of numbers is correct in order of decreasing burning rates.

# RIFLE DATA

CALIBRE	BULLET WEIGHT (Grains)	POWDER TYPE	MAX. CHARGE WEIGHT (Grains)	NOM. VELOCITY	CALIBRE	BULLET WEIGHT (Grains)	POWDER TYPE	MAX. CHARGE WEIGHT (Grains)	NOM. VELOCITY
<b>243 Winchester</b> 24" Barrel (cont)	90	AR2209	44.5	3,185		87	AR2208	38.5	3,174
	90	AR2213SC	48.0C	3,203		87	AR2209	45.5	3,240
	95	AR2208	35	2,996		87	AR2213SC	48	3,213
	95	AR2209	42	3,087		90	AR2208	36.5	2,954
	95	AR2213SC	44.50C	3,052		90	AR2209	43	3,062
	100	AR2208	33.7	2,838		90	AR2213SC	45	3,027
	100	AR2209	41	2,970		90	AR2217	50.00C	3,127
	100	AR2213	42	2,990		95	AR2208	37	2,996
	100	AR2217	47.0C	3,000		95	AR2209	45	3,103
	100	AR2214	48.5	2,980		95	AR2213SC	48.7	3,125
	105	AR2209	38	2,820		95	AR2217	52.00C	3,094
	105	AR2213	38	2,785		100	AR2208	36	2,933
	105	AR2213SC	41	2,846		100	AR2209	42.5	2,999
	105	AR2217	46.0C	2,930		100	AR2213SC	46	3,042
	105	AR2214	46	2,775		100	AR2217	50	3,080
115-117	AR2217	45.5	2,802	105	AR2208	35.5	2,879		
<b>6mm Remington</b> <b>(.244 Remington)</b> 24" Barrel	55	AR2208	46	4,014	105	AR2209	43.2	2,987	
	60	AR2208	42	3,722	105	AR2213SC	46.5	3,002	
	60	AR2213SC	51	3,391	105	AR2217	51.00C	3,010	
	65	AR2208	44	3,737	107	AR2208	35.5	2,854	
	65	AR2209	51.5	3,717	107	AR2209	42	2,906	
	65	AR2213	53.00C	3,574	107	AR2213SC	46	2,988	
	70	AR2208	42	3,550	107	AR2217	49.5	3,011	
	70	AR2209	50.5	3,638	115	AR2209	39	2,696	
	70	AR2213SC	50	3,321	115	AR2213SC	42	2,761	
	75	AR2208	41	3,395	115	AR2217	45.5	2,793	
	75	AR2209	49	3,502	<b>243/303</b> 24" Barrel	75	AR2206	33.5	3,200
	75	AR2213SC	51	3,488		75	AR2208	36	3,200
	80	AR2208	41	3,379		80	AR2206	32.5	3,100
	80	AR2209	47	3,337	80	AR2208	35	3,100	
	80	AR2213SC	51	3,358	80	AR2209	40	3,100	
85	AR2208	39	3,235	90	AR2206	30.5	2,900		
85	AR2209	46	3,275	90	AR2208	33	2,900		
85	AR2213SC	49.5	3,291	90	AR2209	38	2,900		

(C) = Compressed load

Sequence of numbers is correct in order of decreasing burning rates.

# RIFLE DATA

CALIBRE	BULLET WEIGHT (Grains)	POWDER TYPE	MAX. CHARGE WEIGHT (Grains)	NOM. VELOCITY	CALIBRE	BULLET WEIGHT (Grains)	POWDER TYPE	MAX. CHARGE WEIGHT (Grains)	NOM. VELOCITY
<b>243/303</b> 24" Barrel (cont)	100	AR2208	32	2,750	<b>25/20 Winchester</b> 24" Barrel	60	AR2205	10.2	1,962
	100	AR2209	37	2,750		60	AR2207	14.20C	2,101
<b>240 Weatherby Magnum</b> 26" Barrel	60	AR2213SC	57	3,488	L 71	AR2205	7	1,346	
	70	AR2208	43	3,800	75	AR2205	9.3	1,741	
	70	AR2209	51	3,800	75	AR2207	12.8	1,877	
	70	AR2213	55.5	3,800	L 85	AR2205	7	1,317	
	75	AR2208	42	3,700	86	AR2205	8.6	1,545	
	75	AR2209	50	3,700	86	AR2207	11.5	1,673	
	75	AR2213	54.5	3,700	<b>256 Winchester Magnum</b> 24" Barrel	60	AR2207	18	2,794
	75	AR2213SC	56	3,453	75	AR2207	16	2,327	
	80	AR2208	41.5	3,600	87	AR2207	15	2,192	
	80	AR2209	49	3,600	<b>25 Remington</b> 20" Barrel	87	AR2207	21	2,500
	80	AR2213	53.5	3,600	87	AR2206	25	2,500	
	80	AR2213SC	56	3,481	87	AR2208	26	2,500	
	80	AR2217	59	3,207	100	AR2207	20	2,200	
	85	AR2213SC	56	3,460	100	AR2206	24	2,200	
	85	AR2217	59	3,167	100	AR2208	26	2,200	
	85-87	AR2208	41	3,500	117	AR2207	18.5	2,000	
	85-87	AR2209	48.5	3,500	117	AR2206	22.5	2,000	
	85-87	AR2213	52.5	3,500	117	AR2208	23.5	2,000	
	85-87	AR2214	59	3,500	<b>25/35 Winchester</b> 24" Barrel	87	AR2207	22	2,500
	90	AR2209	48	3,450	87	AR2206	27	2,500	
90	AR2213	52	3,450	87	AR2208	29	2,500		
90	AR2213SC	55	3,394	100	AR2207	21	2,250		
90	AR2217	59	3,140	100	AR2206	26	2,250		
90	AR2214	58.5	3,450	100	AR2208	28	2,250		
100	AR2209	46.5	3,350	117	AR2207	20	2,000		
100	AR2213	51	3,350	117	AR2206	25	2,000		
100	AR2213SC	53	3,202	117	AR2208	27	2,000		
100	AR2217	59	3,122	<b>250 Savage (250-3000)</b> 24" Barrel	60	AR2207	33	3,515	
100	AR2214	58	3,350	60	AR2206	36.5	3,550		
105	AR2213SC	52	3,142	60	AR2208	39	3,550		
115-117	AR2213SC	46	2,779	60	AR2209	42	3,394		
115-117	AR2217	58	3,066						

(C) = Compressed load L = Lead Projectile  
Sequence of numbers is correct in order of decreasing burning rates.

# RIFLE DATA

CALIBRE	BULLET WEIGHT (Grains)	POWDER TYPE	MAX. CHARGE WEIGHT (Grains)	NOM. VELOCITY	CALIBRE	BULLET WEIGHT (Grains)	POWDER TYPE	MAX. CHARGE WEIGHT (Grains)	NOM. VELOCITY	
<b>250 Savage (250-3000)</b> 24" Barrel (cont)	75	AR2207	30	3,169	<b>25-308</b> 24" Barrel	60	AR2206	45	3,700	
	75	AR2206	34.5	3,200		60	AR2208	46.5	3,700	
	75	AR2208	36	3,200		60	AR2209	51	3,700	
	75	AR2209	42	3,222		87	AR2206	41	3,200	
	87	AR2206	32	3,000		87	AR2208	42.5	3,200	
	87	AR2208	34.5	3,000		87	AR2209	47.5	3,200	
	87	AR2209	41	3,063		100	AR2208	40.5	3,000	
	87	AR2213	41.5	3,000		100	AR2209	45.5	3,000	
	100	AR2206	30.5	2,750		120	AR2209	43.5	2,850	
	100	AR2208	33	2,750		120	AR2213	45	2,850	
	100	AR2209	40	2,881		<b>25-303</b> 24" Barrel	87	AR2206	34	3,050
	100	AR2213	40	2,750			87	AR2208	37	3,050
	100	AR2213SC	42	2,890			87	AR2209	41	3,050
	117	AR2208	31.5	2,500			100	AR2206	31	2,850
	117	AR2213	38.5	2,500			100	AR2208	33.5	2,850
	117	AR2209	38	2,654			100	AR2209	38	2,850
117	AR2213SC	42	2,789	100	AR2213	40	2,850			
125	AR2209	37	2,619	117	AR2206	28	2,700			
125	AR2213SC	41	2,736	117	AR2208	31	2,700			
<b>25/303</b> <b>(Improved P14 Action)</b> 24" Barrel	87	AR2206	33	3,000	117	AR2209	36	2,700		
	87	AR2208	35	3,000	117	AR2213	39	2,700		
	87	AR2209	38.5	3,000	<b>257/303 (P14 Action)</b> 24" Barrel	87	AR2206	34	3,100	
	87	AR2213	42	3,000		87	AR2208	37	3,100	
	100	AR2206	32	2,800		87	AR2209	40	3,100	
	100	AR2208	34	2,800		100	AR2206	31	2,900	
	100	AR2209	37.5	2,800		100	AR2208	36	2,900	
	100	AR2213	40	2,800		100	AR2209	39.5	2,900	
	117-120	AR2206	31	2,600	117-120	AR2206	28	2,700		
	117-120	AR2208	33	2,600	117-120	AR2208	33	2,700		
	117-120	AR2209	36.5	2,600	117-120	AR2209	36.5	2,700		
117-120	AR2213	39	2,600	117-120	AR2213	40	2,700			
<b>250 Savage</b> <b>(Ackley Improved)</b> 24" Barrel	87	AR2209	42	3,300	<b>257 Roberts</b> 24" Barrel	60	AR2209	51	3,612	
	100	AR2209	41	3,050		60	AR2213SC	53	3,382	
	120	AR2209	40	2,750						

(C) = Compressed load

Sequence of numbers is correct in order of decreasing burning rates.

# RIFLE DATA

CALIBRE	BULLET WEIGHT (Grains)	POWDER TYPE	MAX. CHARGE WEIGHT (Grains)	NOM. VELOCITY	CALIBRE	BULLET WEIGHT (Grains)	POWDER TYPE	MAX. CHARGE WEIGHT (Grains)	NOM. VELOCITY	
<b>257 Roberts</b> 24" Barrel (cont)	75	AR2208	41	3,453		87	AR2209	50	3,400	
	75	AR2209	50	3,422		87	AR2213SC	57	3,544	
	75	AR2213SC	53	3,307		100	AR2209	48	3,129	
	87-90	AR2208	40	3,269		100	AR2213SC	54	3,369	
	87-90	AR2209	46	3,040		117	AR2213SC	52	3,025	
	87-90	AR2213SC	52	3,236		120	AR2209	44	2,916	
	100	AR2208	38	2,981		120	AR2213SC	49	2,978	
	100	AR2209	45	2,970		125	AR2209	43	2,870	
	100	AR2213SC	49	3,010		125	AR2213SC	48	2,911	
	117-120	AR2208	35	2,701		<b>25/06 Remington</b> 24" Barrel	75	AR2208	49.7	3,660
	117-120	AR2209	43	2,777			75	AR2209	58.5	3,700
	117-120	AR2213SC	46	2,760			75	AR2213SC	62.00C	3,599
	125	AR2208	33.5	2,523			75	AR2217	62.0C	3,359
	125	AR2209	43	2,680			85	AR2208	46.5	3,449
125	AR2213SC	45	2,677	85	AR2209		53	3,445		
<b>257 Roberts Improved</b> 24" Barrel	60	AR2206	49	3,650	85		AR2213SC	58	3,473	
	60	AR2208	50	3,650	87		AR2208	46	3,382	
	60	AR2209	53.5	3,650	87		AR2209	54.5	3,409	
	75	AR2206	48	3,500	87		AR2213SC	60	3,421	
	75	AR2208	49	3,500	87		AR2217	62	3,296	
	75	AR2209	52.5	3,500	90		AR2208	45	3,312	
	75	AR2213	55	3,500	90		AR2209	53	3,370	
	87-90	AR2206	45.5	3,300	90		AR2213SC	58	3,481	
	87-90	AR2208	46.5	3,300	100	AR2209	51	3,210		
	87-90	AR2209	51	3,300	100	AR2213SC	54.3	3,172		
	87-90	AR2213	53.5	3,300	100	AR2217	61	3,245		
	100	AR2206	42	3,100	117	AR2209	47.7	2,923		
	100	AR2208	43.5	3,100	117	AR2213SC	52	2,937		
	100	AR2209	48	3,100	117	AR2214	57	3,050		
100	AR2213	51	3,100	117	AR2217	58.5C	3,046			
117-120	AR2208	41.5	2,900	120	AR2209	47.5	2,816			
117-120	AR2209	46	2,900	120	AR2213SC	51.5	2,856			
117-120	AR2213	49	2,900	120	AR2214	56	3,000			
<b>25/284</b> 26" Barrel	75	AR2209	52	3,640	120	AR2217	55.5	2,902		
	75	AR2213SC	58	3,604						

(C) = Compressed load

Sequence of numbers is correct in order of decreasing burning rates.

# RIFLE DATA

CALIBRE	BULLET WEIGHT (Grains)	POWDER TYPE	MAX. CHARGE WEIGHT (Grains)	NOM. VELOCITY	CALIBRE	BULLET WEIGHT (Grains)	POWDER TYPE	MAX. CHARGE WEIGHT (Grains)	NOM. VELOCITY
<b>25/06 Remington</b>	125	AR2213SC	49	2,770		100	AR2209	40	2,450
24" Barrel (cont)	125	AR2217	56	2,894		120-125	AR2206	31	2,300
<b>.257 Weatherby Magnum</b>	75	AR2209	65	3,714		120-125	AR2208	33.5	2,300
26" Barrel	75	AR2213SC	73	3,849		120-125	AR2209	38	2,300
	87	AR2209	63	3,550		129-130	AR2206	30	2,250
	87	AR2213SC	72	3,713		129-130	AR2208	32.5	2,250
	100	AR2209	62	3,319		129-130	AR2209	37	2,250
	100	AR2213SC	68	3,436		139-140	AR2206	29	2,150
	117	AR2209	60	3,144		139-140	AR2208	31.5	2,150
	117	AR2213SC	66	3,282		139-140	AR2209	36	2,150
	120	AR2213SC	65	3,220		160	AR2206	27	2,000
<b>6.5mm Japanese</b>	85	AR2206	34	2,600		160	AR2208	29.5	2,000
<b>(6.5mm x 50 Arisaka)</b>	85	AR2208	36	2,600		160	AR2209	34	2,000
19" Barrel						160	AR2213SC	39	2,086
	100	AR2206	33	2,500	<b>6.5mm x 54</b>	100	AR2206	38	2,800
	100	AR2208	34.5	2,500	<b>(Mannlicher-Schoenauer)</b>	100	AR2208	40	2,800
	100	AR2209	39.5	2,500	18" Barrel	120	AR2206	36.5	2,700
	120	AR2206	31.5	2,400		120	AR2208	38.5	2,700
	120	AR2208	33	2,400		120	AR2209	42.5	2,700
	120	AR2209	38	2,400		129-130	AR2206	35.5	2,500
	120	AR2213	40	2,400		129-130	AR2208	37.5	2,500
	129-130	AR2208	32	2,300		129-130	AR2209	41.5	2,500
	129-130	AR2209	37	2,300		140	AR2206	33.5	2,350
	129-130	AR2213	39	2,300		140	AR2208	35.5	2,350
	140	AR2208	31	2,200		140	AR2209	39.5	2,350
	140	AR2209	36	2,200		160	AR2206	31.5	2,100
	140	AR2213	38	2,200		160	AR2208	33.5	2,100
	180	AR2208	30	2,050		160	AR2209	37.5	2,100
	180	AR2209	35	2,050		160	AR2213	39	2,100
	180	AR2213	37	2,050	<b>6.5mm x 53R</b>	120	AR2206	33	2,500
<b>6.5mm x 52</b>	85	AR2206	34	2,600	<b>(Dutch Mannlicher)</b>	120	AR2208	35	2,500
<b>Mannlicher-Carcano</b>	85	AR2208	37	2,600	25 1/2" Barrel	140	AR2206	30	2,200
21" Barrel	100	AR2206	33	2,450		140	AR2208	32	2,200
	100	AR2208	35	2,450					

(C) = Compressed load

Sequence of numbers is correct in order of decreasing burning rates.

# RIFLE DATA

CALIBRE	BULLET WEIGHT (Grains)	POWDER TYPE	MAX. CHARGE WEIGHT (Grains)	NOM. VELOCITY	CALIBRE	BULLET WEIGHT (Grains)	POWDER TYPE	MAX. CHARGE WEIGHT (Grains)	NOM. VELOCITY
<b>6.5mm x 53R</b> (Dutch Mannlicher) 25 1/2" Barrel (cont)	155	AR2206	32	2,350		160	AR2217	50.00C	2,595
	155	AR2208	35	2,350	<b>6.5mm x 54</b> <b>Mauser</b> 20" Barrel	120-125	AR2206	33	2,500
	160	AR2206	31.5	2,300		120-125	AR2208	35	2,500
	160	AR2208	34.5	2,300	140	AR2206	30	2,200	
<b>260 Remington</b> 24" Barrel	95	AR2206	39.5	3,225	140	AR2208	32	2,200	
	95	AR2208	42	3,245	<b>6.5mm Swedish</b> (6.5mm x 55) 24" Barrel	85	AR2206	43	3,250
	95	AR2209	49.7	3,285		85	AR2208	44	3,295
	100	AR2206	37	3,055		85	AR2209	52.00C	3,283
	100	AR2208	39.5	3,030	100	AR2208	42	3,177	
	100	AR2209	45	3,075	100	AR2209	50.00C	3,172	
	100	AR2213SC	48.8C	3,055	100	AR2213SC	51.00C	2,883	
	107	AR2206	39.5	3,055	120	AR2208	39	2,785	
	107	AR2208	41.5	3,125	120	AR2209	46	2,840	
	107	AR2209	49	3,165	120	AR2213SC	49.5C	2,802	
	107	AR2213SC	51.0C	3,027	120	AR2217	52	2,787	
	120	AR2206	37	2,795	120	AR2214	50.00C	2,600	
	120	AR2208	39	2,880	129	AR2208	37.5	2,664	
	120	AR2209	46.5	2,960	129	AR2209	45.5	2,703	
	120	AR2213SC	50.0C	2,955	129	AR2213SC	48.50C	2,689	
	120	AR2217	51.00C	2,815	129	AR2217	52	2,707	
	125	AR2206	36.2	2,735	140	AR2208	35.5	2,490	
	125	AR2208	37.5	2,785	140	AR2209	42	2,590	
	125	AR2209	44.3	2,865	140	AR2213SC	47.0	2,586	
	125	AR2213SC	48.00C	2,862	140	AR2217	51.5C	2,651	
	125	AR2217	51.00C	2,821	140	AR2214	49.50C	2,620	
	140	AR2206	33.5	2,510	160	AR2208	36	2,354	
	140	AR2208	36	2,575	160	AR2209	43	2,450	
	140	AR2209	42	2,675	160	AR2213SC	48.0C	2,524	
140	AR2213SC	45.7	2,686	160	AR2217	50.00C	2,517		
140	AR2217	50.5	2,730	<b>6.5mm/06</b> (.256 Newton) 24" Barrel	87	AR2206	50	3,500	
142	AR2206	35.4	2,590		87	AR2208	53	3,500	
142	AR2208	37.5	2,645		87	AR2209	58.5	3,500	
142	AR2209	44.5	2,735		87	AR2213	62	3,500	
142	AR2213SC	48.0C	2,747	120	AR2206	45	3,250		
160	AR2209	43	2,540	120	AR2208	48	3,250		
160	AR2213SC	46	2,540						

(C) = Compressed load

Sequence of numbers is correct in order of decreasing burning rates.

# RIFLE DATA

CALIBRE	BULLET WEIGHT (Grains)	POWDER TYPE	MAX. CHARGE WEIGHT (Grains)	NOM. VELOCITY	CALIBRE	BULLET WEIGHT (Grains)	POWDER TYPE	MAX. CHARGE WEIGHT (Grains)	NOM. VELOCITY	
<b>6.5mm/06</b> (.256 Newton) 24" Barrel (cont)	120	AR2209	53.5	3,250	<b>6.5mm x 68 Schuler</b> 25" Barrel	160	AR2213SC	57	2,886	
	120	AR2213	57.5	3,250		160	AR2217	65	2,860	
	140	AR2208	45.5	3,100		85	AR2209	65	3,700	
	140	AR2209	51	3,100		85	AR2213	72	3,700	
	140	AR2213	55	3,100		85	AR2213SC	73	3,705	
	140	AR2214	61	3,100		100	AR2213	70	3,550	
	160	AR2209	48.5	2,900		100	AR2213SC	71	3,547	
	160	AR2213	52.5	2,900		120	AR2213	67	3,300	
<b>6.5mm Remington Magnum</b> 26" Barrel	160	AR2214	58.5	2,900	120	AR2213SC	68	3,309		
	85	AR2209	57	3,564	140	AR2213	62	3,000		
	85	AR2213SC	61	3,570	140	AR2213SC	63	2,993		
	100	AR2209	55	3,327	<b>270/303</b> 24" Barrel	100	AR2206	35	2,750	
	100	AR2213SC	60	3,416		100	AR2208	39	2,750	
	120	AR2209	52	3,080		100	AR2209	44	2,750	
	120	AR2213SC	59	3,286		130	AR2206	33	2,500	
	129	AR2209	51	2,994		130	AR2208	36.5	2,500	
129	AR2213SC	58	3,155	130		AR2209	42.5	2,500		
140	AR2209	49	2,780	<b>WARNING:</b> <i>For SMLE Actions, reduce these loads by at least two grains.</i>		150	AR2208	33.5	2,350	
140	AR2213SC	54	2,943			150	AR2209	40	2,350	
<b>264 Winchester Magnum</b> 24" Barrel	85	AR2209	61		3,669	<b>270 Winchester</b> 24" Barrel	90	AR2208	55	3,596
	85	AR2213SC	73		3,812		90	AR2209	62C	3,603
	100	AR2209	59	3,570	100		AR2208	52	3,397	
	100	AR2213SC	71	3,680	100		AR2209	59.4	3,401	
	100	AR2217	77	3,428	110		AR2208	48.7	3,248	
	120	AR2209	57	3,190	110		AR2209	57	3,267	
	120	AR2213SC	65	3,369	110		AR2213SC	62C	3,214	
	120	AR2217	72	3,185	120		AR2208	47	3,010	
129	AR2209	56	3,177	120	AR2209	55	3,069			
129	AR2213SC	65	3,206	120	AR2213SC	62C	3,112			
129	AR2217	71	3,187	130	AR2208	46	2,931			
140	AR2209	53	2,965	130	AR2209	54.3	3,012			
140	AR2213SC	61	3,065	130	AR2213SC	60.00C	3,019			
140	AR2217	68	3,019	130	AR2217	64C	3,025			
160	AR2209	50	2,686							

(C) = Compressed load

Sequence of numbers is correct in order of decreasing burning rates.



# RIFLE DATA

CALIBRE	BULLET WEIGHT (Grains)	POWDER TYPE	MAX. CHARGE WEIGHT (Grains)	NOM. VELOCITY	CALIBRE	BULLET WEIGHT (Grains)	POWDER TYPE	MAX. CHARGE WEIGHT (Grains)	NOM. VELOCITY	
<b>270 Winchester</b> 24" Barrel (cont)	135	AR2208	45	2,902	<b>7-30 Waters</b> 24" Barrel	120	AR2209	41	2,724	
	135	AR2209	53.5	2,994		120	AR2213SC	41	2,561	
	135	AR2213SC	59.5C	3,010		139	AR2209	38	2,418	
	140	AR2208	43.7	2,772		139	AR2213SC	39	2,384	
	140	AR2209	52	2,870		154	AR2209	37	2,308	
	140	AR2213SC	58C	2,888		154	AR2213SC	37	2,161	
	140	AR2217	63C	2,979		<b>7mm-08 Remington</b> 24" Barrel	100	AR2208	45.7	3,277
	150	AR2209	49	2,724			115	AR2208	46.3	3,216
	150	AR2213SC	55.7	2,804			120	AR2208	45	3,117
	150	AR2217	59C	2,831			120	AR2209	50.00C	3,039
	160	AR2209	49	2,646			130	AR2208	43.5	3,004
	160	AR2213SC	54	2,673			130	AR2209	50.00C	2,998
	160	AR2217	59C	2,765			139	AR2208	43.5	2,877
	180	AR2213SC	50.5	2,501			139	AR2209	50.00C	2,906
	180	AR2217	54	2,540			140	AR2208	42.2	2,819
<b>270 Weatherby Magnum</b> 26" Barrel	90	AR2209	70	3,631	140		AR2209	48.00C	2,868	
	90	AR2213SC	78	3,631	145		AR2208	41.5	2,745	
	90	AR2217	81	3,269	145		AR2209	48.00C	2,801	
	100	AR2209	69	3,509	150		AR2208	41.3	2,731	
	100	AR2213SC	77	3,666	150		AR2209	48.50C	2,823	
	100	AR2217	81	3,287	154		AR2208	41.2	2,666	
	110	AR2213SC	76	3,482	154	AR2209	48.00C	2,743		
	110	AR2217	81	3,242	154	AR2213SC	49.50C	2,625		
	130	AR2209	66	3,262	160	AR2208	39	2,562		
	130	AR2213SC	70	3,205	160	AR2209	46	2,665		
	130	AR2217	81	3,259	160	AR2213SC	49.50C	2,627		
	140	AR2209	64	3,140	162	AR2208	41	2,644		
	140	AR2213SC	68	3,112	162	AR2209	48.00C	2,714		
	140	AR2217	80	3,145	162	AR2213SC	48.50C	2,555		
	150	AR2209	63	2,986	168	AR2208	40	2,540		
	150	AR2213SC	68	3,057	168	AR2209	47.20C	2,637		
	150	AR2217	79	3,132	168	AR2213SC	49.00C	2,545		
	160	AR2209	61	2,738						
	160	AR2213SC	65	2,901						
	160	AR2217	78	3,051						

(C) = Compressed load

Sequence of numbers is correct in order of decreasing burning rates.

# RIFLE DATA

CALIBRE	BULLET WEIGHT (Grains)	POWDER TYPE	MAX. CHARGE WEIGHT (Grains)	NOM. VELOCITY	CALIBRE	BULLET WEIGHT (Grains)	POWDER TYPE	MAX. CHARGE WEIGHT (Grains)	NOM. VELOCITY
<b>7mm-08 Remington</b> 24" Barrel (cont)	175	AR2208	37.5	2,344	<b>280 Remington (7mm Remington Express)</b> 24" Barrel	100	AR2208	51.3	3,433
	175	AR2209	45.00C	2,491		100	AR2209	60.5	3,379
	175	AR2213SC	49.00C	2,516		100	AR2213SC	63.0C	3,266
<b>7mm Shooting Times Eastener (7mm STE)</b> 22" Barrel	120	AR2206	39.5	2,900	115	AR2208	49.0	3,170	
	120	AR2208	42	2,900	115	AR2209	58.5	3,234	
	120	AR2209	49	2,873	115	AR2213SC	62.0C	3,190	
	139	AR2209	48	2,676	120	AR2208	47.2	3,032	
<b>7mm Mauser (7mm x 57)</b> 24" Barrel	100	AR2208	48	3,250	120	AR2209	56.0	3,114	
	100	AR2209	54.00C	3,166	120	AR2213SC	62.0C	3,112	
	110	AR2208	45.5	3,081	130	AR2208	45.5	2,890	
	110	AR2209	54.00C	3,046	130	AR2209	53.2	2,939	
	120	AR2208	44	2,979	130	AR2213SC	59.0C	3,001	
	120	AR2209	51.00C	2,945	140	AR2208	45.5	2,838	
	120	AR2213SC	52.50C	2,777	140	AR2209	53.5	2,918	
	130	AR2208	42	2,800	140	AR2213SC	58.5	2,927	
	130	AR2209	50	2,848	145	AR2208	43.0	2,690	
	140	AR2208	37.7	2,516	145	AR2209	48.8	2,714	
	140	AR2209	46.5	2,682	145	AR2213SC	53.0	2,727	
	140	AR2213SC	49.50C	2,719	150	AR2208	42.0	2,611	
	150	AR2208	36	2,372	150	AR2209	53.7	2,709	
	150	AR2209	44	2,513	150	AR2213SC	60.0C	2,797	
	150	AR2213SC	48	2,542	160	AR2208	42.5	2,555	
	160	AR2208	35	2,261	160	AR2209	49.5	2,610	
	160	AR2209	42.5	2,399	160	AR2213SC	55.0	2,660	
	160	AR2213SC	46	2,415	162	AR2208	42.0	2,573	
	168	AR2208	37.5	2,404	162	AR2209	49.5	2,614	
	168	AR2209	42.5	2,378	162	AR2213SC	54.5	2,644	
168	AR2213SC	46	2,393	168	AR2208	42.2	2,523		
168	AR2217	52.00C	2,485	168	AR2209	50.0	2,586		
175	AR2208	35	2,178	168	AR2213SC	54.5	2,605		
175	AR2209	37	2,159	175	AR2209	46.5	2,447		
175	AR2213SC	40	2,201	175	AR2213SC	51.0	2,477		
175	AR2217	44.5	2,239						

(C) = Compressed load

Sequence of numbers is correct in order of decreasing burning rates.

# RIFLE DATA

CALIBRE	BULLET WEIGHT (Grains)	POWDER TYPE	MAX. CHARGE WEIGHT (Grains)	NOM. VELOCITY	CALIBRE	BULLET WEIGHT (Grains)	POWDER TYPE	MAX. CHARGE WEIGHT (Grains)	NOM. VELOCITY
<b>284 Winchester</b> 24" Barrel	100	AR2209	57	3,169	<b>7 mm Remington Magnum</b> 24" Barrel	100	AR2208	59	3,487
	100	AR2213SC	59	3,090		100	AR2209	69	3,494
	115-120	AR2209	56	3,090		100	AR2213SC	75	3,499
	115-120	AR2213SC	59	3,036		110	AR2208	58.5	3,356
	125-130	AR2209	55	3,030		110	AR2209	68.5	3,357
	125-130	AR2213SC	58	3,013		110	AR2213SC	73	3,367
	139-140	AR2209	54	2,957		120	AR2208	57	3,218
	139-140	AR2213SC	58	2,954		120	AR2209	65	3,226
	145-150	AR2209	53	2,869		120	AR2213SC	68.5	3,236
	145-150	AR2213SC	57	2,893		130	AR2208	54	2,998
	154-160	AR2209	52	2,754		130	AR2209	61.5	3,082
	154-160	AR2213SC	57	2,803		130	AR2213SC	66	3,051
	168	AR2209	51	2,692		140	AR2209	59	2,927
	168	AR2213SC	54	2,690		140	AR2213SC	64	2,950
	175	AR2209	50	2,597		140	AR2217	70	3,036
	175	AR2213SC	54	2,630		150	AR2209	57	2,859
	195	AR2209	46	2,380		150	AR2213SC	62	2,986
195	AR2213SC	50	2,414	150	AR2217	68	2,936		
<b>7mm x 61 Sharp &amp; Hart</b> 24" Barrel	120	AR2206	54.5	3,250	160	AR2209	55.5	2,745	
	120	AR2208	57.5	3,250	160	AR2213SC	60	2,787	
	120	AR2209	64	3,250	160	AR2217	66	2,839	
	139-140	AR2206	53	3,100	162	AR2209	58	2,799	
	139-140	AR2208	56	3,100	162	AR2213SC	64	2,871	
	139-140	AR2209	62.5	3,100	162	AR2217	70	2,905	
	150	AR2206	52	3,000	170	AR2209	60	2,767	
	150	AR2208	55	3,000	170	AR2213SC	65	2,806	
	150	AR2209	61.5	3,000	170	AR2217	71	2,806	
	150	AR2213	63	3,000	175	AR2209	54	2,617	
	160-162	AR2206	51	2,800	175	AR2213SC	58	2,660	
	160-162	AR2208	54	2,800	175	AR2217	64.5	2,692	
	160-162	AR2209	60.5	2,800	<b>7 mm Weatherby Magnum</b> 24" Barrel	140	AR2209	68.5	3,248
	160-162	AR2213	62	2,800		140	AR2213SC	74	3,258
	175	AR2208	52	2,700		140	AR2217	79.00C	3,273
	175	AR2209	59	2,700					
	175	AR2213	60.5	2,700					

(C) = Compressed load

Sequence of numbers is correct in order of decreasing burning rates.

# RIFLE DATA

CALIBRE	BULLET WEIGHT (Grains)	POWDER TYPE	MAX. CHARGE WEIGHT (Grains)	NOM. VELOCITY	CALIBRE	BULLET WEIGHT (Grains)	POWDER TYPE	MAX. CHARGE WEIGHT (Grains)	NOM. VELOCITY	
<b>7 mm Weatherby Magnum</b> 24" Barrel (cont)	150	AR2209	68	3,180		100	AR2207	15	1,850	
	150	AR2213SC	72	3,152		110	AR2205	13.5	1,800	
	150	AR2217	79.00C	3,225		110	AR2207	14.5	1,800	
	160	AR2209	65	2,950		<b>30/30 Winchester</b> 24" Barrel	110	AR2207	25.5	2,409
	160	AR2213SC	70	2,971			110	AR2208	38.0C	2,572
	160	AR2217	75.00C	2,994			130	AR2207	24.5	2,234
	175	AR2209	63.7	2,899			130	AR2208	36.0C	2,496
	<b>7 mm Shooting Times Westerner</b> 24" Barrel	175	AR2213SC	67.5		2,895	150	AR2207	24.0	2,110
		175	AR2217	74.70C		3,022	150	AR2208	34.5	2,349
		120	AR2209	73		3,350	170	AR2207	22.5	1,918
120		AR2213SC	78.5	3,348	170	AR2208	33.0	2,168		
120		AR2217	86	3,405	<b>30/40 Krag</b> 24" Barrel	100	AR2205	16	1,706	
139		AR2209	71	3,183		100	AR2207	34	2,886	
139		AR2213SC	76.5	3,181		110	AR2207	34	2,804	
139		AR2217	85.5	3,284		110	AR2209	51	2,492	
145		AR2213SC	72	3,063		130	AR2207	33	2,565	
145		AR2217	77	3,120		130	AR2209	51	2,535	
150	AR2213SC	68	2,923	150		AR2207	32	2,366		
150	AR2217	72.5	2,982	150		AR2209	49	2,388		
150	AR2218	84.00C	3,027	150		AR2213SC	49	2,306		
160	AR2213SC	74	3,037	165		AR2209	48	2,242		
160	AR2217	80.7	3,084	180	AR2209	46	2,110			
160	AR2218	90.00C	2,970	200	AR2209	44	2,018			
<b>7.35mm Carcano (1938)</b> 21" Barrel	175	AR2217	74	2,944	220-225	AR2209	42	1,947		
	175	AR2218	89.00C	2,973	<b>300 Savage</b> 22" Barrel	100	AR2207	35.5	2,900	
	195	AR2218	88.00C	2,880		100	AR2206	39.5	2,900	
	128	AR2207	33	2,500		100	AR2208	42	2,900	
	128	AR2206	37	2,500		110	AR2207	35	2,700	
	128	AR2208	41	2,500		110	AR2206	37.5	2,700	
	150	AR2206	35	2,450		110	AR2208	41	2,700	
	150	AR2208	39	2,450		130	AR2207	34	2,550	
	<b>30 M1 Carbine</b> 18" Barrel	93	AR2205	14.5		1,900	130	AR2206	36.5	2,550
		93	AR2207	15.5		1,900	130	AR2208	40	2,550
100		AR2205	14	1,850						

(C) = Compressed load

Sequence of numbers is correct in order of decreasing burning rates.

# RIFLE DATA

CALIBRE	BULLET WEIGHT (Grains)	POWDER TYPE	MAX. CHARGE WEIGHT (Grains)	NOM. VELOCITY	CALIBRE	BULLET WEIGHT (Grains)	POWDER TYPE	MAX. CHARGE WEIGHT (Grains)	NOM. VELOCITY	
<b>300 Savage</b> 22" Barrel (cont)	150	AR2207	32.5	2,400		200	AR2206	38	2,300	
	150	AR2206	35	2,400		200	AR2208	39	2,300	
	150	AR2208	38.5	2,400		200	AR2209	46	2,300	
	165	AR2206	33	2,250		200	AR2213SC	46	2,207	
	165	AR2208	36.5	2,250		<b>308 Winchester</b> <b>(7.62mm)</b> 24" Barrel	110	AR2207	40	3,168
	180	AR2206	31.5	2,100			110	AR2208	50C	3,237
	180	AR2208	35.5	2,100			125	AR2207	39.5	2,988
	200	AR2206	29	2,000			125	AR2208	50C	3,135
200	AR2208	33.5	2,000	130	AR2206		47.50C	3,025		
<b>7.5mm x 55 Swiss</b> 31" Barrel	125	AR2209	51	2,839	130		AR2208	48.00C	2,985	
	125	AR2213SC	52	2,811	144		AR2206	45	2,890	
	150	AR2209	49	2,610	144		AR2208	47.00C	2,890	
	150	AR2213SC	51	2,659	150	AR2208	47.0C	2,937		
	165-168	AR2209	48	2,524	155	BM2	43.5	2,750		
	165-168	AR2213SC	49	2,578	155	AR2206	44.5	2,825		
	180	AR2209	46	2,566	155	AR2208	46.5	2,835		
	180	AR2213SC	47	2,424	168	BM2	43.5	2,695		
	<b>307 Winchester</b> 24" Barrel	110	AR2206	44	2,800	168	AR2206	43.7	2,705	
		110	AR2208	48	2,800	168	AR2208	45.5	2,730	
110		AR2209	50	2,600	168	AR2209	47.00C	2,425		
110		AR2213SC	50	2,451	175	AR2206	41.5	2,590		
130		AR2206	43	2,700	175	AR2208	43.5	2,600		
130		AR2208	45	2,700	190	AR2208	42	2,520		
130		AR2209	49	2,700	190	AR2209	48.00C	2,470		
130		AR2213SC	50	2,400	<b>7.62mm x 54R</b> <b>(Russian)</b> 24" Barrel	110	AR2206	50	3,100	
150		AR2206	41	2,500		110	AR2208	53	3,100	
150		AR2208	44	2,500		110	AR2209	61	3,100	
150		AR2209	48	2,500		130	AR2206	48	2,900	
150		AR2213SC	49	2,349		130	AR2208	51	2,900	
170		AR2206	39	2,400		130	AR2209	58.5	2,900	
170		AR2208	42	2,400		150	AR2206	46	2,700	
170		AR2209	47	2,400		150	AR2208	49	2,700	
170		AR2213SC	47	2,290		150	AR2209	56.5	2,700	
180	AR2213SC	47	2,289							

(C) = Compressed load

Sequence of numbers is correct in order of decreasing burning rates.

# RIFLE DATA

CALIBRE	BULLET WEIGHT (Grains)	POWDER TYPE	MAX. CHARGE WEIGHT (Grains)	NOM. VELOCITY	CALIBRE	BULLET WEIGHT (Grains)	POWDER TYPE	MAX. CHARGE WEIGHT (Grains)	NOM. VELOCITY	
<b>7.62mm x 54R (Russian)</b> 24" Barrel (cont)	165	AR2206	44	2,550		200	AR2213SC	57.5C	2,577	
	165	AR2208	47	2,550		220	AR2208	45	2,382	
	165	AR2209	54.5	2,550		220	AR2209	53	2,435	
	180	AR2206	42.5	2,400		220	AR2213SC	57.5C	2,458	
	180	AR2208	45.5	2,400		250	AR2209	47.5	2,156	
	180	AR2209	53	2,400		250	AR2213SC	52.5C	2,237	
	200	AR2208	43.5	2,250		<b>30-06 Improved</b> 24" Barrel	130	AR2209	65	3,250
	200	AR2209	50.5	2,250			130	AR2213	70	3,250
	200	AR2213	53	2,250			150	AR2209	62.5	3,100
	220	AR2208	41.5	2,100			150	AR2213	67	3,100
	220	AR2209	48.5	2,100			165	AR2209	59.5	3,000
	220	AR2213	51	2,100			165	AR2213	63.5	3,000
<b>30-06 Springfield</b> 24" Barrel	110	AR2208	59.0	3,452	180	AR2209	58	2,900		
	125	AR2208	57.2	3,267	180	AR2213	62	2,900		
	130	AR2208	53.5	3,154	200	AR2209	56	2,750		
	150	AR2208	51.0	2,975	200	AR2213	60	2,750		
	150	AR2209	62.0C	3,068	<b>300 Holland &amp; Holland Magnum</b> 24" Barrel	110	AR2209	73	3,550	
	155	AR2208	50.7	2,958		110	AR2213SC	83	3,611	
	155	AR2209	62.0C	3,038		125-130	AR2209	72	3,394	
	165	AR2206	50.0	2,840		125-130	AR2213SC	81	3,362	
	165	AR2208	52.0	2,865		150	AR2209	71	3,202	
	165	AR2209	59.0C	2,835		150	AR2213SC	78	3,313	
	165	AR2213	60.0C	2,825		165	AR2209	69	3,164	
	168	AR2208	50.5	2,859		165	AR2213SC	77	3,099	
	168	AR2209	59.0	2,897		200	AR2209	66	2,909	
	180	AR2208	46.5	2,608		200	AR2213SC	72	2,932	
	180	AR2209	57.5	2,798		220-225	AR2209	64	2,717	
	180	AR2213SC	60.0	2,710		220-225	AR2213SC	70	2,714	
	190	AR2208	46.5	2,608	250	AR2209	62	2,493		
	190	AR2209	56.5	2,692	250	AR2213SC	67	2,563		
190	AR2213SC	61.0C	2,668	<b>308 Norma Magnum</b> 24" Barrel	110	AR2209	77	3,506		
200	AR2208	45.5	2,501		110	AR2213SC	80	3,563		
200	AR2209	53.0	2,544							

(C) = Compressed load

Sequence of numbers is correct in order of decreasing burning rates.

# RIFLE DATA

CALIBRE	BULLET WEIGHT (Grains)	POWDER TYPE	MAX. CHARGE WEIGHT (Grains)	NOM. VELOCITY	CALIBRE	BULLET WEIGHT (Grains)	POWDER TYPE	MAX. CHARGE WEIGHT (Grains)	NOM. VELOCITY
<b>308 Norma Magnum</b> 24" Barrel (cont)	130	AR2209	74	3,292		150	AR2213SC	78	3,207
	130	AR2213SC	79	3,302		150	AR2217	85C	3,255
	130	AR2217	84	3,333		155	AR2208	59.70	3,090
	150	AR2209	73	3,180		155	AR2209	74	3,215
	150	AR2213SC	76	3,258		155	AR2213SC	79C	3,166
	150	AR2217	83	3,279		155	AR2217	85C	3,160
	168	AR2213SC	75	3,140		165	AR2208	58.5	3,000
	168	AR2217	79	3,123		165	AR2209	70	3,042
	180	AR2209	69	3,000		165	AR2213SC	75.5	3,055
	180	AR2213SC	73	3,022		165	AR2217	84	3,207
	180	AR2217	76	2,940		168	AR2208	58.2	2,964
	190	AR2217	74	2,891		168	AR2209	70	3,034
	200	AR2209	67	2,850		168	AR2213SC	75.5	3,023
	200	AR2213SC	70	2,889		180	AR2209	67	2,918
	200	AR2217	73	2,859		180	AR2213SC	73C	2,966
	220	AR2209	65	2,700		180	AR2217	81C	3,042
	220	AR2213SC	68	2,697		190	AR2209	67	2,863
	220	AR2217	70	2,672		190	AR2213SC	73C	2,937
	250	AR2217	68	2,501		190	AR2217	81C	2,990
	<b>300 Winchester Magnum</b> 26" Barrel	110	AR2208	72.5		3,660	200	AR2209	66
110		AR2209	79	3,610	200	AR2213SC	72	2,814	
110		AR2213SC	84C	3,540	200	AR2217	79C	2,883	
110		AR2217	85C	3,392	220	AR2209	65	2,622	
125		AR2208	70	3,462	220	AR2213SC	71	2,693	
125		AR2209	73	3,424	220	AR2217	78	2,750	
125		AR2213SC	80	3,347	250	AR2213	64	2,434	
125		AR2217	85C	3,418	250	AR2217	70	2,484	
130		AR2206	57	3,250	<b>300 Weatherby Magnum</b> 26" Barrel	125	AR2208	69	3,492
130		AR2208	68.5	3,398		125	AR2209	82.5	3,545
130		AR2209	74	3,250		125	AR2213SC	90C	3,590
130		AR2213	82C	3,383		150	AR2208	63	3,142
150		AR2208	60	3,108		150	AR2209	72.5	3,156
150	AR2209	72	3,205	150		AR2213SC	79	3,168	
				150		AR2217	88C	3,264	

(C) = Compressed load

Sequence of numbers is correct in order of decreasing burning rates.

# RIFLE DATA

CALIBRE	BULLET WEIGHT (Grains)	POWDER TYPE	MAX. CHARGE WEIGHT (Grains)	NOM. VELOCITY	CALIBRE	BULLET WEIGHT (Grains)	POWDER TYPE	MAX. CHARGE WEIGHT (Grains)	NOM. VELOCITY		
<b>300 Weatherby Magnum</b> 26" Barrel (cont)	165	AR2208	62	3,000		190	AR2218	105.00C	3,085		
	165	AR2209	74	3,074		200	AR2217	83	2,850		
	165	AR2213SC	80	3,113		200	AR2218	98.00C	2,910		
	165	AR2217	89.7C	3,216		220	AR2217	89	2,865		
	180	AR2209	73.5	3,022		220	AR2218	100.50C	2,850		
	180	AR2213SC	81.5	3,096		<b>7.62mm x 39</b> <b>(Russian)</b> 22" Barrel	122-125	AR2207	26.5	2,378	
	180	AR2217	88.5C	3,152			150	AR2207	24.5	2,122	
	200	AR2209	71	2,866		<b>310 Cadet</b> <b>(Martini Action)</b> 22" Barrel	L 110	AR2205	11	1,500	
	200	AR2213SC	77.5	2,869			120	AR2205	9	1,270	
	200	AR2217	85C	2,963			<b>Jacketted</b>	80	AR2205	16	2,150
	220	AR2209	70	2,725				100	AR2205	14	1,950
	<b>30-378 Weatherby</b> 26" Barrel	220	AR2213SC	75.7		2,766	<b>32-20 WCF</b> 24" Barrel	L 115	AP-70N	4	1,260
		220	AR2217	82.5		2,833		115	AR2205	13	1,800
		150	AR2213SC	104		3,555		<b>Jacketted</b>	L 125	AP-70N	3.7
150		AR2217	114	3,598	150	AR2206			42.5	2,500	
165		AR2213SC	100.5	3,391	<b>7.7mm x 58</b> <b>Japanese</b> 26" Barrel	150		AR2208	46	2,500	
165		AR2217	112	3,495		150		AR2209	51	2,514	
180		AR2213SC	100	3,301		150		AR2213SC	55	2,445	
180		AR2217	111	3,412		180		AR2206	39	2,250	
180		AR2218	120.00C	3,229		180		AR2208	42.5	2,250	
190		AR2217	108	3,316		180		AR2209	47	2,309	
190		AR2218	120.00C	3,243	180	AR2213SC		50	2,233		
200		AR2218	117.00C	3,227	<b>303 British</b> 24" Barrel	125		BM2	44	2,920	
220		AR2217	104	3,084		125		AR2206	46.00C	2,880	
220		AR2218	118.50C	3,145		125		AR2208	47.00C	2,925	
150	AR2213SC	94	3,410	150		BM2	40.4	2,645			
150	AR2217	102	3,455	150		AR2206	43	2,700			
165	AR2213SC	90	3,255	150		AR2208	43.4	2,710			
165	AR2217	98	3,320	150	AR2213SC	49	2,295				
180	AR2213SC	89	3,165								
180	AR2217	96	3,220								
180	AR2218	108.00C	3,160								
190	AR2213SC	85	3,070								
190	AR2217	93	3,130								

(C) = Compressed load L = Lead Projectile

Sequence of numbers is correct in order of decreasing burning rates.



# RIFLE DATA

CALIBRE	BULLET WEIGHT (Grains)	POWDER TYPE	MAX. CHARGE WEIGHT (Grains)	NOM. VELOCITY	CALIBRE	BULLET WEIGHT (Grains)	POWDER TYPE	MAX. CHARGE WEIGHT (Grains)	NOM. VELOCITY	
<b>303 British</b> 24" Barrel (cont)	174	AR2206	39	2,515		175	AR2206	48.5	2,800	
	174	AR2208	41	2,520		175	AR2208	52	2,800	
	174	AR2209	47.00C	2,450		220	AR2209	52	2,400	
	180	AR2206	40	2,445		220	AR2213	56	2,400	
	180	AR2208	39.5	2,410		<b>8mm x 68 Schuler</b> 26" Barrel	125	AR2209	73	3,300
	180	AR2209	47C	2,435			125	AR2213	77	3,300
	180	AR2213SC	47	2,238			150	AR2209	70	3,100
	215	AR2206	39	2,250			150	AR2213	75	3,100
	215	AR2208	39.5	2,265			170	AR2209	68	2,950
	215	AR2209	45.00C	2,185			170	AR2213	72	2,950
<b>7.65mm x 53</b> (7.65mm Mauser) 29" Barrel	150	AR2206	42	2,565	220		AR2209	62	2,650	
	150	AR2208	43.5	2,590	220		AR2213	65.5	2,650	
	150	AR2209	49	2,614	<b>8mm Remington Magnum</b> 24" Barrel		125	AR2209	83	3,488
	175	AR2206	36.5	2,325			150	AR2209	79	3,272
	175	AR2208	38.5	2,350		170-175	AR2209	77	3,128	
175	AR2209	47	2,454	170-175		AR2213SC	82	3,144		
<b>32 Remington</b> 22" Barrel	170	AR2207	23	1,900		180-185	AR2209	75	3,007	
	170	AR2206	27	1,900		180-185	AR2213SC	80	3,024	
	170	AR2208	28.5	1,900		200	AR2209	73	2,919	
<b>32 Winchester Special</b> 20" Barrel	170	AR2206	30	1,900		200	AR2213SC	79	2,932	
	170	AR2207	27	2,168		220-225	AR2213SC	78	2,871	
	170	AR2208	32	1,925		<b>338-06</b> 24" Barrel	200	AR2209	65	2,710
<b>32-40 Winchester</b> 24" Barrel	170	AR2207	19	1,650	225		AR2209	62	2,744	
	170	AR2206	26	1,825	250		AR2209	60	2,569	
<b>8mm Mauser (8x57)</b> 23" Barrel	196 Hoch	AR2205	13	1,367	250		AR2213SC	61	2,408	
	125	AR2207	42	3,054	275		AR2213SC	59	2,348	
	125	AR2209	54	2,480	<b>338 Winchester Magnum</b> 24" Barrel		160	AR2208	63	3,150
	150	AR2207	41	2,848			160	AR2209	72	3,155
	150	AR2209	54	2,552			160	AR2213SC	78C	3,130
	150	AR2213SC	57	2,452			175	AR2206	58	2,930
	170	AR2209	54	2,507			175	AR2208	59	2,940
170	AR2213SC	57	2,418							
<b>8mm-06</b> 24" Barrel	150	AR2206	51	3,000						
	150	AR2208	54	3,000						

(C) = Compressed load

Sequence of numbers is correct in order of decreasing burning rates.

# RIFLE DATA

CALIBRE	BULLET WEIGHT (Grains)	POWDER TYPE	MAX. CHARGE WEIGHT (Grains)	NOM. VELOCITY	CALIBRE	BULLET WEIGHT (Grains)	POWDER TYPE	MAX. CHARGE WEIGHT (Grains)	NOM. VELOCITY	
<b>338 Winchester Magnum</b> 24" Barrel	175	AR2209	70	3,050	<b>357 Magnum Rifle</b> 20" Barrel	110	AP-70N	8	1,670	
	175	AR2213	73.5	3,040		110	AR2205	21	2,233	
	175	AR2213SC	76	3,041		125	AP-70N	7.6	1,526	
	180	AR2208	63.5	3,087		125	AR2205	20	2,122	
	180	AR2209	74.5	3,157		140	AP-70N	7	1,356	
	180	AR2213SC	78C	3,067		140	AR2205	18	1,930	
	200	AR2208	58.5	2,805		150	AP-70N	6.7	1,323	
	200	AR2209	72.5	2,969		150	AR2205	16.5	1,775	
	200	AR2213SC	77.50C	2,965		L 158	AP-50N	5.3	1,200	
	210	AR2208	58.5	2,784		158	AP-70N	6.3	1,147	
	210	AR2209	70	2,855		L 158	AP-70N	6.7	1,380	
	210	AR2213SC	75.50C	2,888		L 158	AP-90	7.5	1,415	
	225	AR2208	57.5	2,680		158	AR2205	16	1,668	
	225	AR2209	69.5	2,785		L 158	AR2205	11.5	1,382	
	225	AR2213SC	74.50C	2,792		170	AR2205	14.5	1,535	
	250	AR2209	67.5	2,657		180	AR2205	13.7	1,325	
	250	AR2213SC	71.50C	2,655		<b>35 Remington</b> 20" Barrel	180	AR2207	32	2,172
	250	AR2217	76C	2,622			180	AR2206	38	2,050
275	AR2209	63.5	2,447	180	AR2208		40.5	2,196		
275	AR2213SC	69	2,502	200	AR2207		30.5	1,999		
275	AR2217	76C	2,564	200	AR2206		35	1,900		
<b>340 Weatherby Magnum</b> 24" Barrel	200	AR2209	80	3,000	200		AR2208	39.5	2,139	
	200	AR2213	88	3,000	220-225		AR2207	29	1,867	
	200	AR2213SC	90	3,040	220-225		AR2206	34	1,750	
	225	AR2209	78	2,850	220-225		AR2208	38	1,998	
	225	AR2213	84	2,850	<b>356 Winchester</b> 20" Barrel		180	AR2205	30	2,238
	225	AR2213SC	86	2,889			180	AR2207	43	2,600
	250	AR2209	76	2,700			200	AR2207	40	2,383
	250	AR2213	81	2,700		250	AR2207	37	2,133	
	250	AR2213SC	83	2,784		<b>358 Winchester</b> 26" Barrel	180	AR2207	43	2,711
	250	AR2214	90	2,700			200	AR2207	41	2,532
	275	AR2209	74	2,550	220		AR2207	41	2,502	
	275	AR2213	78	2,550	250		AR2207	39	2,312	
275	AR2213SC	80	2,569							
275	AR2214	86	2,550							

(C) = Compressed load L = Lead Projectile

Sequence of numbers is correct in order of decreasing burning rates.

# RIFLE DATA

CALIBRE	BULLET WEIGHT (Grains)	POWDER TYPE	MAX. CHARGE WEIGHT (Grains)	NOM. VELOCITY	CALIBRE	BULLET WEIGHT (Grains)	POWDER TYPE	MAX. CHARGE WEIGHT (Grains)	NOM. VELOCITY	
<b>35 Whelen</b> 22" Barrel	180	AR2206	58.5	2,785		300	AR2209	77	2,633	
	180	AR2208	60	2,764	<b>9mm x 57 Mauser</b> 24" Barrel	250	AR2206	41.5	2,250	
	200	AR2206	55.5	2,675		250	AR2208	45	2,250	
	200	AR2208	57	2,653		280	AR2206	45	2,100	
	200	AR2208	57	2,653		280	AR2208	49	2,100	
	220-225	AR2206	53.5	2,580	<b>9.3mm x 62 Mauser</b> 24" Barrel	231-234	AR2206	58	2,600	
	220-225	AR2208	56	2,588		258	AR2206	55.5	2,450	
	250	AR2206	52	2,450		258	AR2208	58	2,450	
	250	AR2208	55	2,486		270	AR2206	52	2,300	
						270	AR2208	54.5	2,300	
				270		AR2209	59	2,300		
<b>350 Remington Magnum</b> 26" Barrel	180	AR2207	51	2,808	285-286	AR2206	51	2,200		
	180	AR2206	59	2,960	285-286	AR2208	53.5	2,200		
	180	AR2208	62	3,000	285-286	AR2209	58	2,200		
	200	AR2207	48	2,512	293	AR2206	50.5	2,150		
	200	AR2206	55	2,780	293	AR2208	53	2,150		
	200	AR2208	60	2,828	293	AR2209	57.5	2,150		
	220	AR2207	46	2,423	<b>9.3mm x 64 Brennecke</b> 26" Barrel	231-234	AR2208	68	2,700	
	220	AR2206	52	2,550		231-234	AR2209	73	2,700	
	220	AR2208	57	2,600		258	AR2208	66.5	2,500	
	250	AR2207	42	2,190		258	AR2209	70.5	2,500	
	250	AR2206	51	2,450		285-286	AR2208	63	2,300	
	250	AR2208	55	2,600		285-286	AR2209	67.5	2,300	
<b>358 Norma Magnum</b> 24" Barrel	180	AR2208	66	3,100	293	AR2208	62	2,250		
	180	AR2209	79	3,100	293	AR2209	67	2,250		
	200	AR2208	65	3,000	293	AR2213	71	2,250		
	200	AR2209	78	3,000	<b>38-55 Winchester</b> 24" Barrel	L 250	AR2207	24	1,740	
	250	AR2208	63	2,700		255	AR2207	28	1,788	
	250	AR2209	75	2,778		<b>375 Winchester</b> 24" Barrel	200	AR2207	38.00C	2,480
							220	AR2207	34	2,233
<b>358 Shooting Times Alaskan</b> 24" Barrel	225	AR2209	87	3,119						
	250	AR2209	84	2,933						
	250	AR2213SC	90	2,984						
	250	AR2217	90	2,810						
	265	AR2209	83	2,895						
	AR2209	81	2,785							

(C) = Compressed load

Sequence of numbers is correct in order of decreasing burning rates.

# RIFLE DATA

CALIBRE	BULLET WEIGHT (Grains)	POWDER TYPE	MAX. CHARGE WEIGHT (Grains)	NOM. VELOCITY	CALIBRE	BULLET WEIGHT (Grains)	POWDER TYPE	MAX. CHARGE WEIGHT (Grains)	NOM. VELOCITY					
<b>375 Holland &amp; Holland Magnum</b> 24" Barrel	200	AR2208	76	3,121	<b>44-40 Winchester*</b> 20" Barrel	L 200	AP-70N	7.3	1,069					
	210	AR2208	72.5	3,023		L 200	AS-30N	5	924					
	235	AR2208	70	2,819		L 200	AR2205	24	1,450					
	250	AR2208	66.5	2,642		L 215	AR2205	22	1,380					
	250	AR2209	83.00C	2,733		240	AR2205	20	1,370					
	270	AR2208	67	2,620		<i>*Data only for use in Winchester Model 92 &amp; 94, Marlin Model 1894 and Remington Model 14.5 rifles in excellent condition. Either slug the bore to determine appropriate bullet diameters or use 0.427 inch diameters only. Do not use 0.429 inch bullets without first checking barrel bore size.</i>								
	270	AR2209	83.00C	2,694										
	300	AR2208	62	2,454										
	300	AR2209	81.50C	2,645										
	<b>378 Weatherby Magnum</b> 24" Barrel	235	AR2209	109							3,224	<b>44 Remington Magnum (Rifle Only)</b> <i>Do not use these loads in pistol.</i> 20" Barrel	L 165	AS-30N
235		AR2213SC	117	3,202	L 165						AP-70N		7.2	1,138
270		AR2209	105	3,091	180						AR2205		29	2,114
270		AR2213SC	115	3,102	L 185						AP-70N		7.4	1,180
300		AR2209	100	2,940	L 185						AS-30N		6	1,162
300		AR2213SC	112	2,926	L 200						AS-30N		6.4	1,172
<b>38-40</b> 26" Barrel	130	AR2205	28	2,000	L 200	AP-70N	7.8	1,209						
	180	AR2205	24.5	1,750	200	AR2205	27	1,982						
<b>404 Jeffery</b> 26" Barrel	400	AR2206	63	2,100	210	AR2205	27	1,970						
	400	AR2208	71	2,100	225	AR2205	25.5	1,897						
	400	AR2209	80	2,100	L 240	AS-30N	6.2	1,062						
<b>416 Remington Magnum</b> 24" Barrel	350	AR2208	82	2,622	L 240	AP-70N	10.2	1,374						
	400	AR2208	77	2,407	240	AR2205	24	1,778						
	400	AR2209	88.00C	2,395	270	AR2205	22.5	1,638						
<b>416 Weatherby Magnum</b> 24" Barrel	300	AR2209	122	3,051	280	AR2205	22	1,544						
	350	AR2209	118	2,891	300	AR2205	20	1,452						
	400	AR2209	110	2,687	<b>444 Marlin</b> 24" Barrel	200	AR2207	51.20C	2,566					
	400	AR2213SC	120	2,703		225	AR2207	46.9	2,361					
	400	AR2217	120	2,419		240	AR2207	49.20C	2,499					
<b>416 Rigby</b> 24" Barrel	350	AR2209	102	2,518		260	AR2207	45.5	2,194					
	400	AR2209	100	2,414		265	AR2207	47	2,273					
	400	AR2213SC	106	2,422	270	AR2207	46.5	2,261						
	400	AR2217	110	2,409										

(C) = Compressed load L = Lead Projectile

Sequence of numbers is correct in order of decreasing burning rates.

# RIFLE DATA

CALIBRE	BULLET WEIGHT (Grains)	POWDER TYPE	MAX. CHARGE WEIGHT (Grains)	NOM. VELOCITY	CALIBRE	BULLET WEIGHT (Grains)	POWDER TYPE	MAX. CHARGE WEIGHT (Grains)	NOM. VELOCITY	
<b>444 Marlin</b> 24" Barrel (cont)	275	AR2207	44.5	2,172	<b>45-90 Winchester</b> 24" Barrel	L 485	AR2207	32	1,434	
	280	AR2207	42.5	2,108		300	AR2207	36.5	1,500	
	280	AR2208	52.00C	2,025		400	AR2207	30.5	1,350	
	300	AR2207	42.5	2,082		<b>577/450 Martini Henry</b> 24" Barrel	L 400	AR2207	37	1,300
	300	AR2208	50.00C	1,914			<b>450 Nitro Express</b> 24" Barrel	500	AR2208	84
<b>45/70 Government Lever Actions</b> 24" Barrel	300	AR2207	60	2,424	500	AR2209		100	2,150	
	350	AR2207	54	2,191	<b>458 Winchester Magnum</b> 24" Barrel	300		AR2207	77.00C	2,784
	350	AR2208	60.00C	2,013		350		AR2206	77.5	2,450
	<i>*This data is intended for the 1895 lever action Marlin rifles only.</i>	400	AR2208	62C		2,065		350	AR2207	72
		400	BM1	52		1,950	400	AR2206	74.5	2,320
400		BM2	56	1,955		400	AR2207	67	2,323	
400		AR2206	56	1,935	400	AR2208	77.00C	2,310		
400	AR2207	48	1,920	450	AR2207	60	2,092			
<b>45/70 Government Modern Rifles</b> 24" Barrel	300	AR2207	63	2,532	450	AR2208	74.00C	2,195		
	350	AR2207	56	2,300	500	AR2206	71.5	2,125		
	<i>NOTE: This data is for use in Ruger No. 1 and No. 3 single shots, Browning Model 1895 Single Shot and Siamese Mauser Bolt Action Rifles</i>	400	AR2207	53	2,108	500	AR2207	58.5	1,987	
		500	BM2	54	1,780	500	AR2208	74.00C	2,152	
		500	AR2206	55	1,830	<b>460 Weatherby Magnum</b> 24" Barrel	350	AR2209	120	2,737
500		AR2208	57	1,785	350		AR2213SC	128	2,678	
<b>45/70 Government Trapdoor Rifle</b> 24" Barrel	300	AR2205	40	1,935	400		AR2209	118	2,610	
	300	AR2207	50	1,970	400		AR2213SC	127	2,565	
	300	BM1	54	2,000	500		AR2209	115	2,508	
	300	BM2	60	2,035	500	AR2213SC	126	2,469		
	300	AR2206	60	2,030	600	AR2209	104	2,439		
300	AR2208	63.00C	2,020	600	AR2213SC	115	2,457			
L 385	AR2207	32	1,483	<b>470 Nitro Express</b> 24" Barrel	500	AR2209	112	2,141		
	AR2208	52.5	1,805		500	AR2213	115	2,150		
<i>*This data is intended for Springfield "Trapdoor" 1886, rolling block and antique replica rifles</i>	400	AR2207	44		1,740	500	AR2213SC	119	2,159	
	400	BM1	46		1,665	500	AR2217	125	2,063	
	400	BM2	52		1,760	600	AR2213SC	105	1,941	
	400	AR2206	52	1,770	600	AR2217	115	1,933		
	400	AR2208	54	1,760						
L 405	AR2207	31	1,459							
L 405	AR2208	50	1,718							

(C) = Compressed load L = Lead Projectile

Sequence of numbers is correct in order of decreasing burning rates.

# RIFLE DATA

CALIBRE	BULLET WEIGHT (Grains)	POWDER TYPE	MAX. CHARGE WEIGHT (Grains)	NOM. VELOCITY	CALIBRE	BULLET WEIGHT (Grains)	POWDER TYPE	MAX. CHARGE WEIGHT (Grains)	NOM. VELOCITY
500 Jeffery 45" Barrel	535	AR2206	96	2,300	50 Browning Machine Gun	655	AR2218	248	3,029
						750	AR2218	233	2,800
					45" Barrel	800	AR2218	225	2,725

(C) = Compressed load

Sequence of numbers is correct in order of decreasing burning rates.

# Cowboy Action Data

For the first time we present a separate section for Cowboy Action Data. Many of these loads were developed through an extensive program by the Hodgdon Powder Company Inc. of the USA, to whom we are indebted for their contribution.

Velocities for all cartridges listed are limited by the SAAMI maximum allowable pressures. Minimum loads are established by pressure. Loads with very low pressure may fail to function in very cold weather, resulting in a bullet becoming lodged in the bore (please see the Warnings section of this guide).

The average loss in velocity from the listed pressure barrel data when using a  $4\frac{7}{8}$  inch barreled revolver is 175 fps. A  $7\frac{1}{2}$  inch revolver will lose about 50 fps.

Carbines will generally develop velocities similar to those listed in the data. Some carbine/cartridge combinations will exceed the velocities listed.

Because of a wide variation in bullet diameter, chamber diameter, cylinder gap, case capacity and manufacturing variations in primers and powder, we suggest that you chronograph loads from your own firearms.

**DO NOT LOAD BELOW MINIMUM RECOMMENDATIONS.** Doing so could result in a bullet stuck in the bore.

## Long Range Rifle Data

The loads listed below are representative of common calibres used. As there are so many

cartridges which could be used, only a few are shown. **DO NOT USE ANY FILLER MATERIAL WITH THESE LOADS**, as fillers can alter pressure and velocities decidedly. Velocities are limited to approximately 1,600 fps due to excessive leading at higher velocities.

Use flat point bullets in tubular magazines.

## Shotgun

Any load suitable for trap or skeet is suitable for Cowboy Action shooting. Shot loads of  $\frac{7}{8}$  oz., 1 oz. And  $1\frac{1}{8}$  oz. are all that is required. Heavier loads generate more recoil and are, at best, unpleasant to shoot and, at worst, add time to your score.

The loads included in this guide were selected for their performance and for the availability of components.

Remember:

1. Smooth shells come out of a double barreled shotgun better than ribbed shells.
2. NO STEEL SHOT.
3. NO SHOT LARGER THAN #4. Size 6,  $7\frac{1}{2}$  and 8 are most common.
4. CHECK YOUR RELOADS IN YOUR GUN FOR PROPER FUNCTION.

\*Damascus barrels should be considered unsafe with ANY powder.



# COWBOY LONG RIFLE

CALIBRE	BULLET WEIGHT (grains)	POWDER TYPE	STARTING LOADS			MAXIMUM LOADS		
			POWDER WEIGHT (grains)	VELOCITY (fps)	PRESSURE (cup)	POWDER WEIGHT (grains)	VELOCITY (fps)	PRESSURE (cup)
<b>30-30 Winchester</b>	160 Cast	AR2207	15.0	1420	15,000	17.0	1616	20,600
<b>32-40 Winchester</b>	196 Cast	AR2205	Reduce Maximum 3%			13.0	1267	18,000
<b>38-55 Winchester</b>	250 Cast	AR2207	18.5	1408	17,100	21.0	1608	23,700
<b>45-70 Government</b>	300 Cast	AR2207	30.0	1390	14,400	35.5	1641	16,100
		AR2208	45.0	1599	17,800	55.0	1880	20,600
	385 Cast	AR2207	28.0	1302	13,300	32.0	1483	14,700
		AR2208	42.5	1537	15,400	52.5	1805	21,800
	405 Cast	AR2207	27.0	1251	14,200	31.0	1459	17,100
		AR2208	40.0	1392	15,600	50.0	1718	20,900
	485 Cast	AR2207	28.0	1279	16,400	32.0	1434	20,400

\*AR2205 Loads should not be reduced more than 3% due to inconsistency of velocity at the lower pressure.



# COWBOY PISTOL

CALIBRE	BULLET WEIGHT (grains)	POWDER TYPE	STARTING LOADS			MAXIMUM LOADS		
			POWDER WEIGHT (grains)	VELOCITY (fps)	PRESSURE (cup)	POWDER WEIGHT (grains)	VELOCITY (fps)	PRESSURE (cup)
25-20 Winchester Lead RNFP	71	AR2205	6.0	1146	13,700	7.0	1346	18,200
	85	AR2205	6.0	1129	18,500	7.0	1317	20,500
32 H & R Magnum Lead RNFP	90	AP-70N	3.0	819	8,400	3.2	908	11,500
32-20 Winchester (Colt Pistol) Lead RNFP	115	AP-70N	3.0	808	14,200	3.2	869	16,000
32-20 Winchester (Ruger Pistol & Rifle Data only) Lead RNFP	115	AP-70N	3.2	869	16,000	4.0	1037	22,600
38 Special Lead RNFP	125	AP-70N	4.3	872	8,700	4.7	1036	16,800
		AS-30N	2.5	810	8,400	3.5	978	13,900
	135	AP-70N	4.1	924	13,400	4.6	1025	16,900
		AS-30N	2.6	767	11,400	3.3	910	16,200
	158	AP-70N	3.5	756	9,600	4.5	974	16,700
		AS-50N	3.0	798	12,400	3.5	903	16,100
AS-30N	2.8	812	12,900	3.1	871	15,000		
357 Magnum Lead RNFP	125	AP-70N	4.8	1046	11,000	6.8	1401	34,200
		AS-30N	3.5	984	11,900	5.3	1260	33,000
	135	AP-70N	4.8	986	11,700	6.5	1314	27,800
		AS-30N	3.4	914	12,200	5.1	1207	30,200
	158	AP-70N	4.0	890	15,700	6.2	1247	33,400
		AS-30N	3.2	867	14,400	4.6	1079	33,600
AS-30N	3.2	867	14,400	4.6	1079	33,600		
38-40 WCF (in psi) Lead RNFP	180	AP-70N	6.9	813	8,200	7.5	955	11,900
		AS-30N	4.7	760	8,700	5.5	889	13,500
44-40 WCF (in psi) Lead RNFP	200	AP-70N	6.6	722	10,000	7.3	777	11,100
		AS-30N	4.2	648	8,200	5.0	765	11,700
44 Russian Lead RNFP	160-165	AS-30N	3.0	776	7,300	4.0	977	11,100
		AS-30N	3.0	776	7,300	4.0	977	11,100
	200	AP-70N	4.8	816	8,100	5.7	970	11,500
		AS-30N	3.2	747	8,000	3.7	837	11,100
	240	AP-70N	3.8	679	6,400	4.6	841	11,000
		AS-30N	3.0	711	9,400	3.5	769	10,700

# COWBOY PISTOL

CALIBRE	BULLET WEIGHT (grain)	POWDER TYPE	STARTING LOADS			MAXIMUM LOADS				
			POWDER WEIGHT (grains)	VELOCITY (fps)	PRESSURE (cup)	POWDER WEIGHT (grains)	VELOCITY (fps)	PRESSURE (cup)		
44 Special	160-165 Lead RNFP	AP-70N AS-30N	5.5 3.6	851 836	5,700 6,000	6.3 4.6	1042 1009	10,900 13,400		
	185 Lead RNFP	AP-70N AS-30N	5.4 3.5	823 810	7,700 7,800	6.4 4.2	1031 930	13,900 13,200		
	200 Lead RNFP	AP-70N AS-50N AS-30N	5.5 4.3 3.5	802 774 748	8,200 7,300 7,800	6.5 5.2 4.5	960 919 891	12,900 13,500 14,000		
	240 Lead SWC	AP-70N AS-50N AS-30N	4.9 3.9 3.2	721 723 669	8,000 8,900 9,000	5.6 4.7 4.0	873 825 771	13,300 13,000 13,500		
	44 Magnum	160-165 Lead RNFP	AP-70N AS-30N	6.5 4.4	918 910	7,700 8,500	7.2 5.5	1059 1064	11,500 15,500	
		185 Lead RNFP	AP-70N AS-30N	6.4 4.2	919 839	8,400 8,900	7.4 6.0	1070 1043	12,600 18,400	
		200 Lead RNFP	AP-70N AS-50N AS-30N	6.8 5.3 4.2	897 854 785	10,500 10,000 8,500	7.8 6.8 6.4	1045 1044 1028	15,400 18,300 20,200	
		240 Lead SWC	AP-70N AS-50N AS-30N	6.5 4.5 4.3	852 737 759	11,700 9,900 14,000	7.6 6.5 6.2	1009 970 940	19,900 21,700 21,800	
		45 S & W (Schofield)	200 Lead RNFP	AP-70N AS-30N	6.0 4.0	773 733	9,100 8,300	7.0 5.0	938 845	13,100 13,100
			225-230 Lead RNFP	AP-70N AS-30N	5.5 4.0	738 697	9,400 9,400	6.0 4.7	816 783	11,400 13,600
			250 Lead RNFP	AP-70N AS-30N	6.0 4.0	724 674	9,900 11,000	6.3 4.2	830 710	13,800 12,500

# COWBOY PISTOL

CALIBRE	BULLET WEIGHT (grain)	POWDER TYPE	STARTING LOADS			MAXIMUM LOADS			
			POWDER WEIGHT (grains)	VELOCITY (fps)	PRESSURE (cup)	POWDER WEIGHT (grains)	VELOCITY (fps)	PRESSURE (cup)	
45 Long Colt	160-165	AP-70N	6.5	798	7,400	9.5	1197	12,900	
	Lead RNFP	AS-30N	5.0	907	7,500	6.4	1083	13,500	
	180	AP-70N	6.5	791	7,100	9.2	1161	13,900	
	Lead RNFP	AS-30N	4.8	840	7,900	6.0	1016	13,800	
	200	AP-70N	6.4	749	5,700	8.8	1067	13,600	
	Lead RNFP	AS-30N	4.6	777	5,900	5.9	931	13,100	
	215	AP-70N	6.8	777	6,300	8.6	1001	13,800	
	Lead RNFP	AS-30N	4.6	754	6,400	5.7	889	13,400	
	225-230	AP-70N	6.5	761	7,600	8.1	975	13,800	
	Lead RNFP	AS-30N	4.4	734	7,600	5.4	865	13,900	
	250	AP-70N	6.5	742	9,200	7.8	941	13,000	
	Lead RNFP	AS-50N	5.4	786	9,200	6.0	866	13,400	
			AS-30N	4.2	713	8,500	5.1	817	13,400

# COWBOY SHOTSHELL

Category	SHOT WEIGHT (ounces)	POWDER TYPE	PRIMER TYPE	WAD TYPE	VELOCITY 1			VELOCITY 2			VELOCITY 3			VELOCITY 4		
					VELOCITY 1 (fps)	CHARGE WEIGHT (Grains)	PRESSURE (LUP)	VELOCITY 2 (fps)	CHARGE WEIGHT (Grains)	PRESSURE (LUP)	VELOCITY 3 (fps)	CHARGE WEIGHT (Grains)	PRESSURE (PSI)	VELOCITY 4 (fps)	CHARGE WEIGHT (Grains)	PRESSURE (PSI)
<b>12 GA. 2 3/4" REMINGTON PREMIER PLASTIC SHELLS</b>	1 OZ	AS-30N	Rem.209P	Rem.TGT 12	<b>1125</b>	16.8	6,600	<b>1180</b>	17.9	7,400	<b>1235</b>	18.9	8,100	<b>1290</b>	19.9	8,800
		AS-30N	Win. 209	WAA12SL		15.7	7,100		17.0	8,200		18.4	9,500		19.8	10,700
		AS-50N	Win. 209	WAA12SL		18.4	7,100		20.1	8,600		21.0	10,000			
		AS-50N	Rem. 209P	Rem. TGT 12		20.2	6,800		20.9	7,700		21.4	8,900			
	1 1/8 OZ	AS-30N	CCI 209	Windjammer	<b>1090</b>	16.6	6,400	<b>1145</b>	18.0	7,500	<b>1200</b>	19.4	8,600	<b>1255</b>		
		AS-30N	Rem. 209P	Rem. Fig 8		16.9	6,900		18.0	7,900		19.2	9,000			
		AS-50N	CCI 209	Windjammer		19.2	6,100		19.8	6,500		21.2	7,500		22.3	8,300
		AS-50N	Rem. 209P	WAA12		18.3	7,000		18.8	7,600		19.7	8,700		20.9	10,400
		AS-50N	Rem. 209P	Rem. Fig 8		18.6	6,400		19.6	7,000		20.9	7,500		21.7	9,100
	AP-70N	Win. 209	Rem. Fig 8	<b>1200</b>	22.5	8,900	<b>1255</b>	23.7	9,900	<b>1310</b>	25.0	10,800				
		Win. 209	WAA12		21.5	9,800		23.0	10,700							
		CCI 209	Windjammer		23.2	8,400		24.4	9,100		25.7	10,200				
<b>12 GA. 2 3/4" WINCHESTER COMPRESSION-FORMED AA TYPE SHELLS</b>	1 OZ	AS-30N	CCI 209	Rem. TGT 12	<b>1125</b>	16.6	6,700	<b>1180</b>	17.7	7,700	<b>1235</b>	18.7	8,500	<b>1290</b>	19.8	9,500
		AS-30N	Rem. 209P	Purple PC		17.6	6,400		18.6	6,800		19.5	7,200		20.5	7,600
		AS-30N	Win. 209	WAA12SL		16.0	7,400		17.2	8,300		18.5	9,200		19.8	10,200
		AS-50N	CCI 209	WAA12SL		19.2	6,700		20.6	7,500		22.3	8,800			
		AS-50N	Rem. 209P	Rem. TGT 12		20.8	5,900		21.5	7,100		22.3	7,800			
		AS-50N	Win. 209	WAA12SL		18.9	6,900		20.4	8,300		21.3	8,900			
	1 1/8 OZ	AS-30N	Rem. 209P	Red PC	<b>1090</b>	17.1	7,200	<b>1145</b>	18.4	7,800	<b>1200</b>	19.6	8,400	<b>1255</b>		
		AS-30N	Win. 209	WAA12		16.1	7,700		17.3	8,800		18.2	9,800			
		AS-30N	Win. 209	Rem. Fig 8		16.0	7,700		17.0	8,500		18.1	9,400			
		AS-50N	Rem. 209P	Rem. Fig 8					20.1	6,300		21.1	7,700		22.1	8,000
		AS-50N	Win. 209	WAA12		17.6	7,400		18.1	8,300		19.2	9,600		21.3	10,800
		AS-50N	Win. 209	RedPC		18.3	6,800		18.9	7,200		20.2	8,300		21.3	9,700
AP-70N	Win. 209	Rem. Fig 8	<b>1200</b>	22.5	9,000	<b>1255</b>	23.5	10,000	<b>1310</b>	24.5	10,700					
	Win. 209	WAA12		22.0	10,000		22.7	10,600								
<b>16 GA. 2 3/4" REMINGTON PREMIER SP PLASTIC SHELLS</b>	1 OZ	AP-70N	Win. 209	Rem. SP 16	<b>1165</b>	18.5	8,800	<b>1220</b>	19.8	9,900	<b>1275</b>	20.5	10,400			
		AP-70N	Win. 209	WAA16		18.5	9,000		19.5	9,900		20.5	10,400			
<b>16 GA. 2 3/4" WINCHESTER COMPRESSION-FORMED SHELLS</b>	1 OZ	AP-70N	Win. 209	ACTIV G-28	<b>1165</b>	19.0	8,800	<b>1220</b>	20.3	9,700	<b>1275</b>	21.5	10,600			
		AP-70N	Win. 209	WAA16		19.0	9,200		20.0	10,300		20.7	11,000			
<b>20 GA. 2 3/4" REMINGTON RXP PLASTIC SHELLS</b>	7/8 OZ	AS-50N	Rem. 209P	RXP20	<b>1200</b>	14.0	10,700									
		AS-50N	Win. 209	WAA20		14.0	11,900									
		AP-70N	Win. 209	WAA20		15.8	9,600									
		AP-70N	Rem. 209P	RXP20		15.8	9,000									
<b>20 GA. 2 3/4" WINCHESTER COMPRESSION-FORMED AA TYPE SHELLS</b>	7/8 OZ	AS-50N	Rem. 209P	RXP20	<b>1200</b>	14.0	10,800									
		AS-50N	Win. 209	PC20		14.0	11,200									
		AS-50N	Win. 209	WAA20		14.0	11,800									
		AP-70N	Win. 209	WAA20		15.5	10,200									
		AP-70N	Rem. 209P	RXP20		15.8	9,800									

# SHOT GUN POWDER BUSHING CHART AS-30N

CHARGE WEIGHT (grains)	LEE	POMSNISS WARREN	BLAIR	MEC	LYMAN	REDDING	PACIFIC			TEXAN		HORNADY
							DL-155 DL-155AF DL-105	DL-266	DL-366	GT, FW, LT, A, AP, D, DP	M	
16.0	.141	H		29								429
16.5	.148	F1				12	414	420	420	124	126	
	.155	I	429	30	H10	13						
17.0	.163	J		31						125	127	441
17.5		J1	441		H11		423	432	432		128	
18.0		J2		32		14				127	129	456
18.5	.171	G	450				432	441	441	128		
		G1		33							130	
19.0	.180				H11A		444	450	450	129	131	468
			459	34	H12							
19.5		M	465							130	132	
20.0	.189			35			453	459	462	131		483
20.5		N		36	H13	15				132		
21.0		O		37								495
21.5		P										
22.0	.198	Q		38								507
22.5				38A								
23.0												
23.5												

**NOTE:** This bushing chart does not represent recommended charge weights. It is intended only as a guide to the approximate weight of powder which will be dropped by the listed bushing. It is essential that charges being dropped weighed on each occasion a loading machine is used.

# SHOT GUN POWDER BUSHING CHART AS-50N

CHARGE WEIGHT (grains)	LEE	POMSISS WARREN	BLAIR	MEC	LYMAN	REDDING	PACIFIC			TEXAN		HORNADY
							DL-165 DL-165APF DL-105	DL-286	DL-366	GT. FW. LT. A, AP, D, DP	M	
13.7	.105			21								
14.0												375
14.3				22								378
14.6												381
												384
14.9				23								387
												390
15.2	.116	D										393
15.5		D1		24								396
16.0	.122	E		25								402
16.5	.128	E1		26								408
				27							414	
17.0		E2										
17.5	.134	F1		28								420
18.0				29								423
18.5	.141	H				12				124		429
19.0		I	429	30	H10	13	414	420	420	125	126	435
19.5	.148	J		31							127	441

**NOTE:** This bushing chart does not represent recommended charge weights. It is intended only as a guide to the approximate weight of powder which will be dropped by the listed bushing. It is essential that charges being dropped weighed on each occasion a loading machine is used.

# SHOT GUN POWDER BUSHING CHART AS-50N

CHARGE WEIGHT (grains)	LEE	POMSNISS WARREN	BLAIR	MEC	LYMAN	REDDING	PACIFIC			TEXAN		HORNADY
							DL-155 DL-155APF DL-105	DL-286	DL-366	GT, FW, LT, A, AP, D, DP	M	
20.0		J1	441		H11		423	423	432	126	128	447
20.5	.155	K	450	32		14				127		453
							432	441	441		129	
21.0				33						128	130	459
21.5	.163	L			H11A					129		465
			459	H12	444	450	450		131			
22.0				34						130		471
22.5	.171	M	465								132	477
23.0				35			453	459	462	131	133	483
23.5	.180	N		36		15	462	479	474	132		489
24.0		O			H13							495
24.5	.189	P		37								501
25.0		Q		38								507
25.5												
26.0	.198			38A								

**NOTE:** This bushing chart does not represent recommended charge weights. It is intended only as a guide to the approximate weight of powder which will be dropped by the listed bushing. It is essential that charges being dropped weighed on each occasion a loading machine is used.

# SHOT GUN POWDER BUSHING CHART AP-70N

CHARGE WEIGHT (grains)	LEE	POMSIWESS WARREN	BLAIR	MEC	LYMAN	REDDING	PACIFIC		TEXAN		HORNADY
							DL-165 DL-165APF DL-105	DL-286	DL-366	GT. FW. LT. A, AP, D, DP	
12.7		C								112	
13.0		C		16							330
13.5				17						113	
13.6									111		
14.0		D1		18					112	114	342
14.5				19						115	
15.0	.095									116	354
15.5		E		20					113	117	
16.0				21					114		366
		E1		22					115		
16.5									116	118	372
	.105										
17.0		E2		22						119	378
		D							117		
17.4				23							384
	.110	D1							118	120	
18.0		F								121	390
18.5	.116	F1		24							393
19.0		F6		25					119	122	402
19.4	.122		26						120	123	405

**NOTE:** This bushing chart does not represent recommended charge weights. It is intended only as a guide to the approximate weight of powder which will be dropped by the listed bushing. It is essential that charges being dropped weighed on each occasion a loading machine is used.



# SHOT GUN POWDER BUSHING CHART AP-70N

CHARGE WEIGHT (grains)	LEE	POMNESS WARREN	BLAIR	MEC	LYMAN	REDDING	PACIFIC			TEXAN		HORNADY
							DL-155 DL-155APF DL-105	DL-266	DL-366	GT, FW, LT, A, AP, D, DP	M	
20.0	.123	G		27						121	124	411
20.6		G1								122		417
21.0	.134			28						123		420
21.5							423	420	420		126	423
22.0		H		29		12				124	127	429
22.5	.141			30	H10		432	432	432		128	432
23.0		I	429			13				125		438
23.5	.148			31	H11					126		441
						14			127			
24.0	.151	J	441				447	447	447		129	447
24.5	.155	J1		32							130	450
25.0		K					456	456	456	128	131	456
		.163	L	450	33					129		
26.0			459	34			468	468	468		132	468
					35						130	133
27.0	.171	M	465				480	480	480	131		480
28.0		N		36		15				132		489
29.0		O		37	H13					133		501

**NOTE:** This bushing chart does not represent recommended charge weights. It is intended only as a guide to the approximate weight of powder which will be dropped by the listed bushing. It is essential that charges being dropped weighed on each occasion a loading machine is used.

## APPROXIMATE ADI POWDER EQUIVALENTS

ADI	ALLIANT	DUPONT	WINCHESTER	HODGDON	VECTAN	NORMA	ACCURATE ARMS	ADI
AP-30N						R-1		AP-30N
	Bullseye							
AS-30N	Red Dot			Clays	AS	N2010	NITRO 100	AS-30N
AP-50N	Red Dot	PB	W231	HP 38			AA 2	AP-50N
AS-50N	Green Dot	700X	WST	International			AA 5	AS-50N
AP-70N	Unique	SR 7625		Universal				AP-70N
	Herco		WSF		A1			
AP-90		800X	WAP	HS-6			AA 7	AP-90
AP-100		SR 4756						AP-100
			W540					
	Blue Dot		W571	HS-7			AA 9	
	2400				Ba 6			
			W296	H110				
AR2205		IMR4227		H4227		R-123	AA1680	AR2205
AR2207	Reloader 7	IMR4198	W680	H4198	Tu 2000	N200		AR2207
BM1								BM1
				H322				
BM2		IMR3031		BENCHMARK			AA2015	BM2
AR2206	Reloader 12			BLC(2)	Tu 3000		AA2230	AR2206
			W748	H335				
		IMR4895		H4895	Tu 5000		AA2460	
AR2208		IMR4064					AA2520	AR2208
		IMR4320				N201		
						N202	AA2700	
	Reloader 15			H380		N203		
AR2209		IMR4350	W760	H414/H4350	Tu 7000	N204		AR2209
	Reloader 19			H450		N205		
AR2213		IMR4831	WMR			MRP	AA3100	AR2213
AR2213SC				H4831				AR2213SC
	Reloader 22	IMR7828			Tu 8000			
AR2217				H1000				AR2217
AR2214								AR2214
AR2218				H870/H50BMG			AA8700	AR2218

NOTE: These tables are only approximate, showing equivalence within about 5%.

*Actual burning rates can be different depending upon calibre, weapon, loading components and practices, as well as from powder lot to powder lot. As a consequence it must be understood that we cannot accept any responsibility for the use of this information in any way.*

# BURNING RATES

Product	Burning Rate	Examples Of Application		
		Shotgun	Pistol	Rifle
AS-30N	Fastest	12 Gauge Trap/Skeet Load		
AP-30N	↑		.38 Special	
AS-50N		12 Gauge Trap/Sporting		
AP-50N			.45 ACP	
AP-70N	☐	12 Gauge Field Load	40-40 Winchester	
AP-90			9mm Luger	
AP-100	☐		.40 S&W	
AR2205	☐	410 gauge	.44 Magnum	.22 Hornet
AR2207			.7mm TCU	.222 Remington
BM1	☐			.223 Remington
BM2				.22-250 Remington
AR2206				30-30 Winchester
AR2208				.308 Winchester
AR2209				30-06 Springfield
AR2213				.270 Winchester
AR2213SC				300. Win. Magnum
AR2214	↓			7mm Rem. Magnum
AR2218	Slowest			.30/378 Weatherby







**THIS HANDLOADING GUIDE IS SUPPLIED  
FREE OF CHARGE TO THE SHOOTER BY ADI**

ADI powders are sold at all major gunshops



For handloading/technical information:

ADI Limited, Ordnance  
Propellants, Explosives and Chemicals  
Bayly St, Mulwala, NSW 2647, Australia  
Tel: (03) 5742 2200 Fax: (03) 5744 1873

For Distribution Information:

ADI Limited, Ordnance  
Marketing and Product Development  
509 St Kilda Rd, Melbourne, VIC 3004, Australia  
Tel: (03) 9868 6100 Fax: (03) 9868 6146



**ADI**

ACN 008 642 751

**A Transfield Thomson-CSF  
Company**

