



SAKO

M 74 SUPER

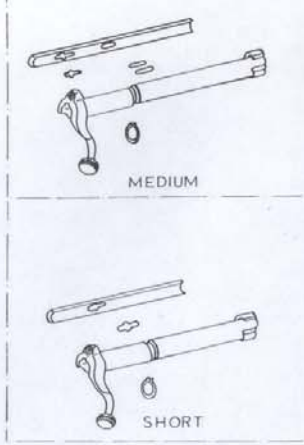
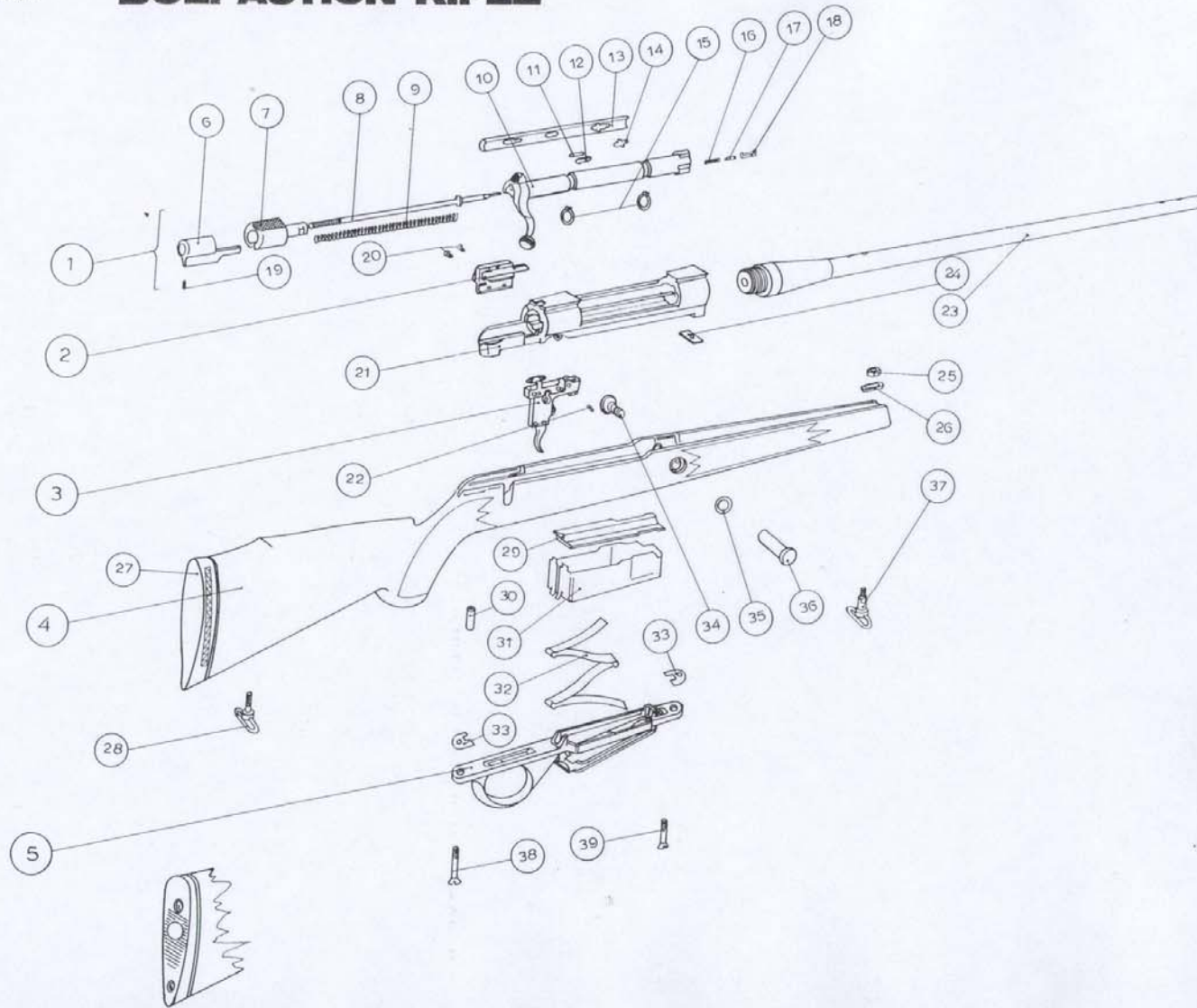
BOLT ACTION RIFLE

Type	<input type="checkbox"/> SHORT ACTION	No	
	<input type="checkbox"/> MEDIUM ACTION		
	<input type="checkbox"/> LONG ACTION		
Caliber	<input type="checkbox"/> 222	<input type="checkbox"/> 223	
	<input type="checkbox"/> .22—250	<input type="checkbox"/> .308	
	<input type="checkbox"/> .243	<input type="checkbox"/> .30—06	
	<input type="checkbox"/> .25—06	<input type="checkbox"/> .300 H&H Mag.	
	<input type="checkbox"/> .264 Mag.	<input type="checkbox"/> .300 Win. Mag.	
	<input type="checkbox"/> .270	<input type="checkbox"/> .338 Mag.	
	<input type="checkbox"/> 7 mm Rem. Mag.	<input type="checkbox"/> .375 H&H Mag.	
Test pressure	4200 kg/cm ² 60000 lbs/sq.in.		
Day of inspection	Inspector		



SAKO M 74 SUPER

BOLT ACTION RIFLE

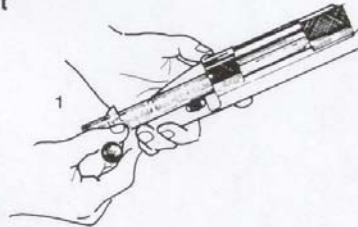


PARTS LIST M74S M74M M74L SUPER

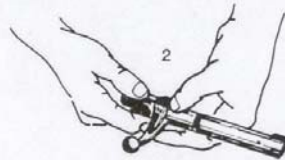
	SHORT	MEDIUM	LONG
1 Bolt complete	2031855	2032139	Std 2032159 Mag 2032162
2 Bolt stop complete	2032101	2032101	2032158
3 Trigger mechanism, compl.	2019383	2032166	2032166
4 Stock complete	2031672	308 2031695 . 243, 22-250 2031694	2032516 2032517
5 Trigger guard complete	2031996	3032141	2032170
6 Firing pin cocking piece	3018747	3023835	3023836
7 Bolt sleeve	2033505	2033506	2033506
8 Firing pin	3029279	3025944	3025945
9 Firing pin spring	3029280	3020872	3020874
10 Bolt body	3027468	3017045	Std 3021836 Mag 3017993
11 Bolt guard stop plate spring		3016424	3016424
12 Bolt guard stop plate		3024436	3024436
13 Bolt guard strip	3025972	3025970	3025971
14 Bolt guard stop spring	3025962	3025961	3025961
15 Bolt guard strip ring	3006013	3015758	3017997
16 Extractor catch spring	3029744	3029744	3029744
17 Extractor catch	3031540	3031540	3031540
18 Extractor	3028826	3015744	3017994
19 Firing pin locking screw	4451170	4451170	4451170
20 Bolt stop screw	3017136	3017136	3017136
21 Receiver	3031626	3028226	Std 3028227 Mag 3015835
22 Bolt stop pin	3015835	3015835	3015835

	SHORT	MEDIUM	LONG
23 Barrel	. 222 3032005 . 223 3032012	. 22-250 3032016 . 243 3032023 . 308 3032043	. 25-06 3032030 . 264 3032032 . 270 3032034 7 mm RemMag 3032039 . 300 Win Mag 3032053 . 300 H & H Mag 3032057 . 30-06 3032049 . 338 Mag 3032058
24 Receiver bottom plate	3027161	3027161	3027161
25 Upper swivel nut	3025496	3025496	3025496
26 Upper swivel bottom plate	3011511	3011511	rubber 3011511
27 Butt plate	bakel 3019857	bakel 3019857	3019870
28 Stock swivel, compl.	3031183	3031183	Std 3031183
29 Magazine follower	3022576	3021750	3022510
30 Trigger guard bushing		. 22-250 3020676	3031337
31 Magazine housing	3018764	3031336	3023557
		. 22-250 3020675	Std 3024434 . 264 Mag 3032177 . 300 Win Mag 3032177 . 338 Mag 3032177 . 375 Mag 3032178
32 Magazine spring	3019396	3023135	3022939
33 Trigger guard bottom plate	3031236	3031236	3031236
34 Adjuster screw		. 308 3024479	3024479
35 Adjuster bottom plate		. 308 3026314	3026314
36 Adjuster		3024478	3024478
37 Upper swivel, compl.	3011508	3011508	3011508
38 Rear fastening screw	3031231	3031280	3031280
39 Front fastening screw	3023852	3023852	3023852

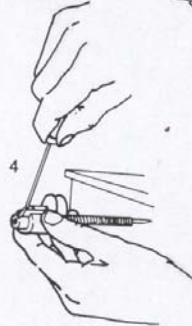
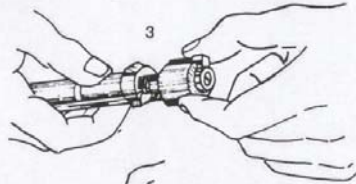
To Disassemble the Bolt



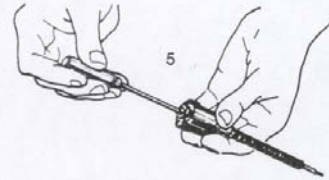
Depress the bolt release button with the left thumb (Fig. 1) and slide the bolt back and out of the receiver. Next,...



Hold the bolt in the left hand and with the rear of the bolt pointing up (Fig. 2); turn the bolt sleeve clockwise until it disengages from the bolt body (Fig. 3).



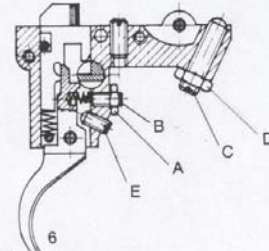
Loosen the firing pin stop screw with small screw driver (Fig. 4). Hold the firing pin assembly in the left hand with the point of the firing pin on a flat surface with the cocking piece and bolt sleeve unit held firmly in the hand.



This will prevent the components from flying apart due to the pressure of the firing pin spring. Using a screw driver, turn the threaded and slotted end of the firing pin downward out of the cocking piece (Fig. 5).

To Reassemble

Simply reverse the foregoing procedure, making sure the firing pin protrusion is approximately .059"-.071". The protrusion has been fixed within these tolerances and it is not possible to alter this without special equipment.



Firing pin protrusion on short action .053"-.063".
N. B.

Trigger Adjustment

The Sako triggers, as illustrated, as well as the identical triggers with integral thumb safety mechanism, are factory set for perfect sear engagement. The weight of pull and backlash can be adjusted simply and positively without the aid of a gunsmith. To lessen weight of pull, loosen lock nut "A" and back off screw "B" until desired weight is reached. Then tighten lock nut "A". To increase weight of pull, reverse above procedure. Backlash may be reduced, if necessary by turning in screw "E".

NOTE: Be sure screw "C" and lock nut "D" are tight before attempting adjustment.

To Operate Rifle

Lift the bolt handle and pull the bolt to the rear. Lay each cartridge on the magazine follower, pressing down until it is held in place in the magazine. Repeat this operation until five cartridges have been loaded into the magazine. With magazine loaded, push the bolt forward and down. This will strip the top cartridge from the magazine and into the chamber. The rifle is now loaded and cocked.

To Operate Safety

With the rifle cocked, slide the safety to the rear. In this position the safety is on "SAFE" and the bolt is locked. The safety is pushed forward to place it in "FIRE" position while the red dot on the stock can be seen. The safety will operate only when the rifle is cocked.