

OWNER'S MANUAL

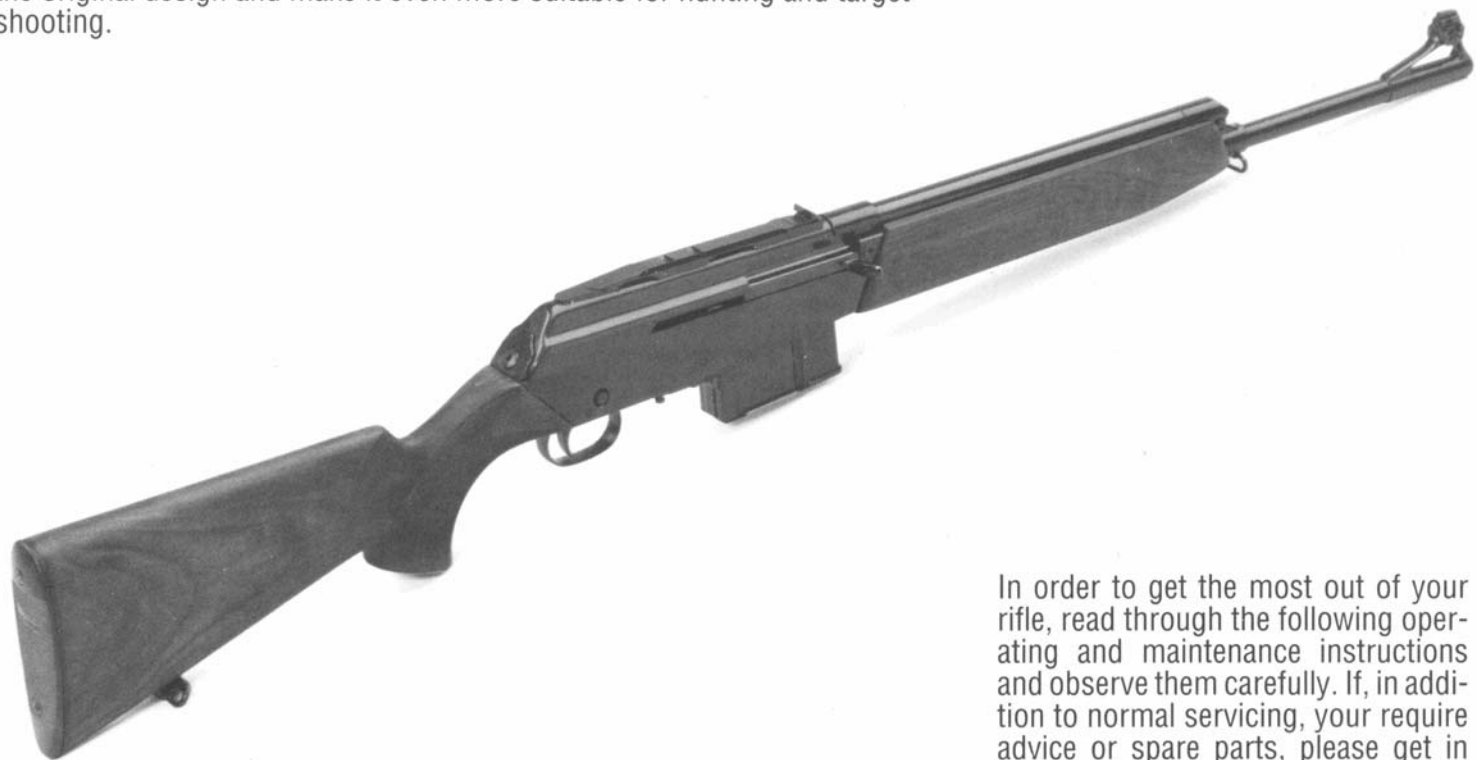


VALMET HUNTER M/88
SEMI-AUTOMATIC HUNTING RIFLE

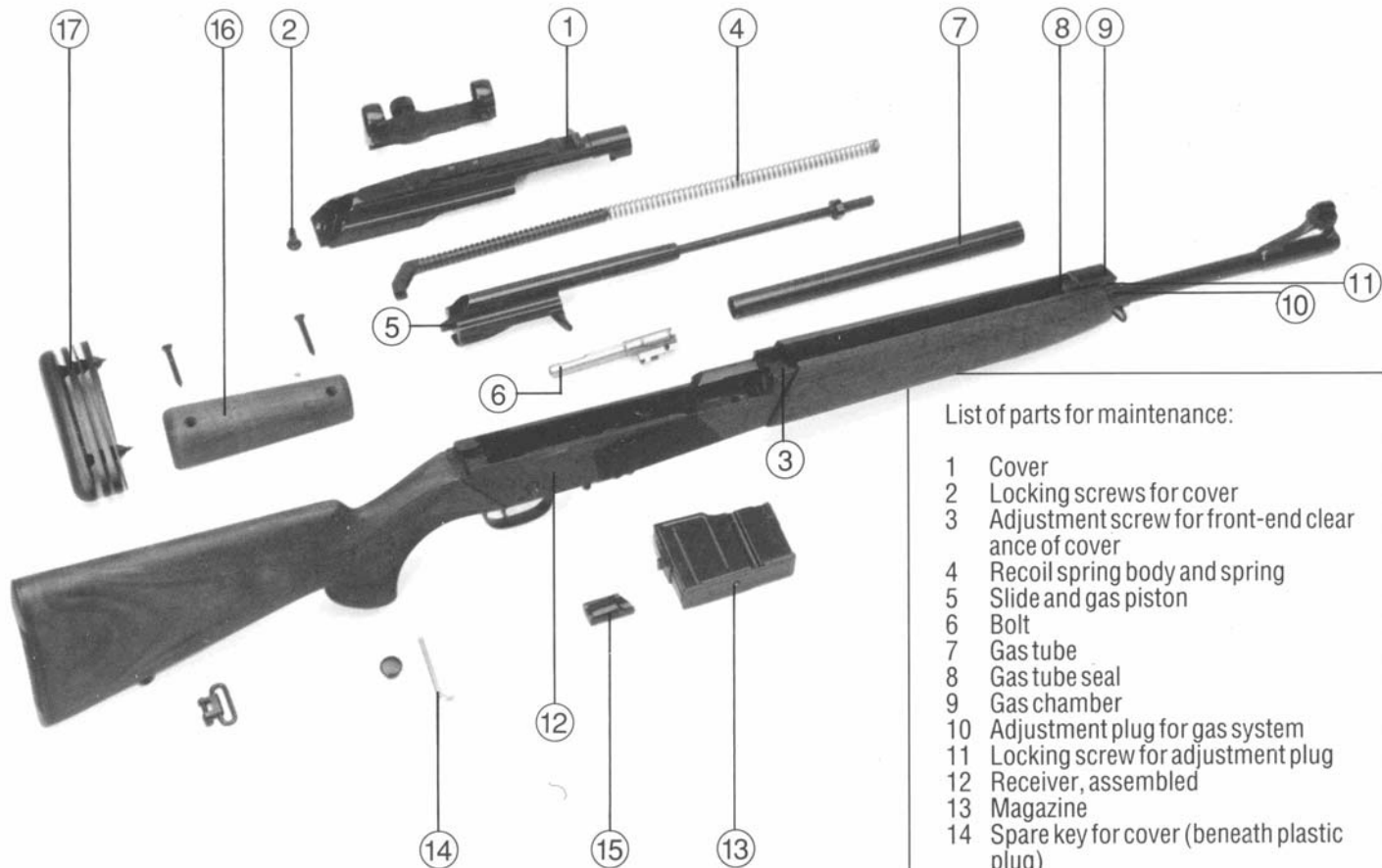
VALMET

Congratulations on choosing the Valmet Hunter m/88 as your new semi-automatic hunting rifle.

The rifle is based on a famous gas-operated rifle which was designed on the 1940s. The legendary reputation of this weapon for reliability and durability is your guarantee of faultless operation under all conditions. As manufacturer of hundreds of thousands of this kind of weapons we have taken advantage of the opportunity to develop the original design and make it even more suitable for hunting and target shooting.



In order to get the most out of your rifle, read through the following operating and maintenance instructions and observe them carefully. If, in addition to normal servicing, you require advice or spare parts, please get in contact with your dealer or importer.



List of parts for maintenance:

- 1 Cover
 - 2 Locking screws for cover
 - 3 Adjustment screw for front-end clearance of cover
 - 4 Recoil spring body and spring
 - 5 Slide and gas piston
 - 6 Bolt
 - 7 Gas tube
 - 8 Gas tube seal
 - 9 Gas chamber
 - 10 Adjustment plug for gas system
 - 11 Locking screw for adjustment plug
 - 12 Receiver, assembled
 - 13 Magazine
 - 14 Spare key for cover (beneath plastic plug)
 - 15 Buffer
 - 16 Cheek piece (optional)
 - 17 Distance and angle pieces (optional)
- Cleaning kit including to each rifle

1 Design and operation

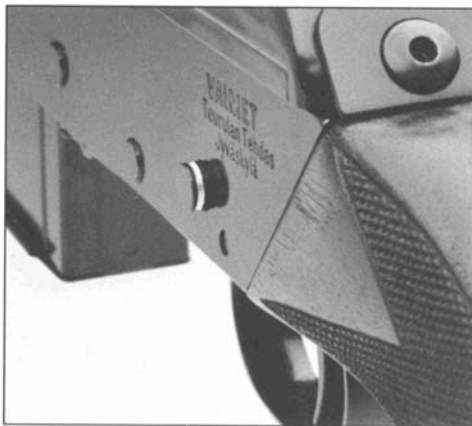
The Valmet Hunter m/88 is a gas-operated semi-automatic rifle. The rifle is cocked by hand for the first shot and on firing the spent cartridge is ejected and a new round fed into the chamber, rendering the weapon immediately ready for the next shot. Be careful, since the safety button is now in "OFF" position.

2 Operation of the safety button

The safety button, marked with the letter S, is located transversely in the receiver above the trigger. By pressing this pin from right to left (seen from behind) the safety button moves roughly 3 mm and locks into the "OFF" position. At the same time a red warning symbol

appears on the left side of the gun. The rifle can only be cocked in this position (slide cannot be pulled back when the safety button is in the "ON" position). The safety button is engaged by pressing the pin from left to right. In use, the simplest way to disengage the safety button is by using one's forefinger, without letting go of the neck of the weapon (right-handed). The operation of the safety button is virtually silent. The safety button may be disengaged totally noiselessly by applying gentle thumb support on the opposite side of the weapon while the button is being pressed.

Having loaded the rifle, remember to return the safety button to the "ON" position and do not release it until just before firing.



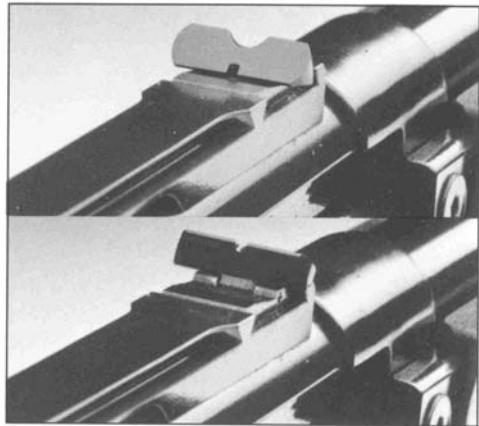
3 Sights

A

The rear sight has two positions. The wide U-shaped notch is designed for rapid action hunting situations. When this position is selected the point of aim is approximately 20 cm/100 m (8"/110 yd.) lower than by using a narrow sight blade.

B

The front sight is a bead hinged at its front edge to permit vertical adjustment and held in position at its rear edge by a side screw (screw 1). By loosening off screw 1 the sight may be raised or lowered. Raising the sight 1 mm depresses the point of aim by roughly 20 cm over a distance of 100 m. Sideways adjustment can be carried out using screws 2 and 3. By loosening the left hand screw (seen from behind) and tightening the right hand screw

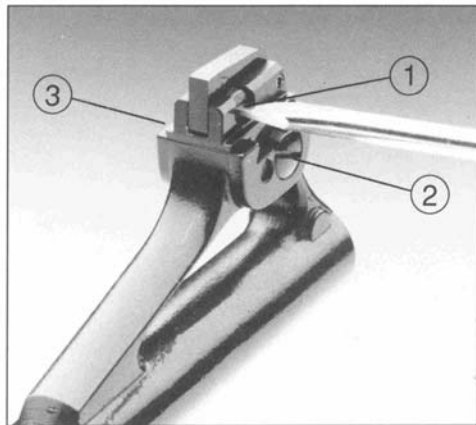


the bead moves to the left and the point of aim on the target to the right (1 mm = approx. 20 cm/100 m, 1/32" = approx. 8"/110 yd.).

The sights are set at the factory for a range of 100 metres using Sako cartridges and 11.7 g (180 grs) softpoint bullets. The sights should always be reset after every change of cartridge or shooter.

C

A dove-tail truck on the cover permits attachment of a mount and scope. If an original scope mount (optional) is used, the point of aim remains the same even if the scope is now and then removed. The truck is equipped with two notches into which the flange of the scope mount fits. Use whichever of these offers the best distance between eye and scope. To make sure the point of aim remains exactly the same, always use the same notch.



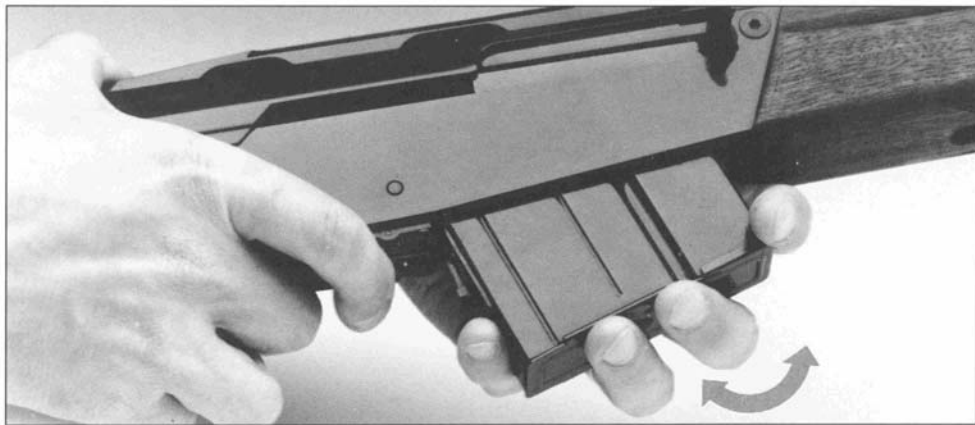
4 Loading

The barrel of your new rifle has been treated at the factory with high-quality protective oil. Please remove all traces of oil before using the rifle for the first time.

Before positioning the magazine make sure that the safety button is in the "ON" position. Fit the magazine so that the cam on the front edge drops into place first, then swivel the rear end of the magazine into place. A distinct click should be heard, and the magazine is securely positioned. Disengage the safety button by pressing it to the left. Cock the weapon by pulling the slide into the fully-back position and releasing it under the force of the spring. Do not impede this forward movement in any way or the weapon may not feed correctly.

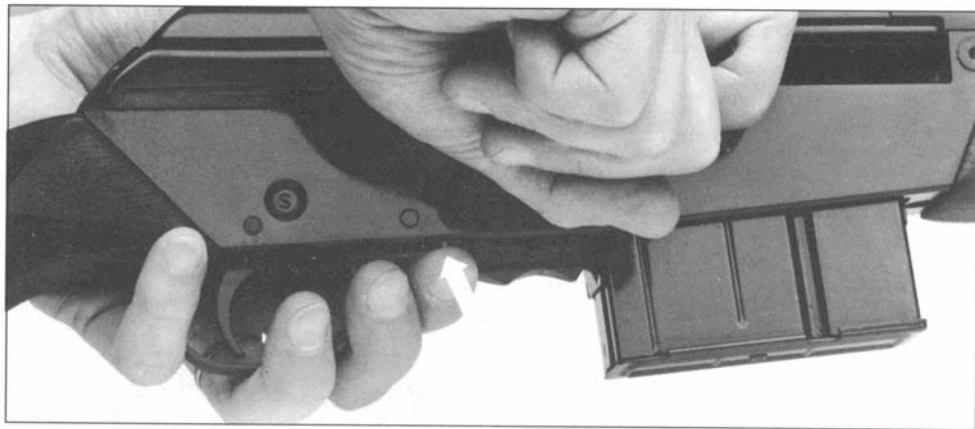
The rifle is now loaded and the safety button in the "OFF" position. If you are not going to fire immediately, re-engage the safety button.

To remove the magazine, first pull the locking button back, turn the rear end of the magazine out, then pull the whole magazine away. After removing the magazine always check that the cartridge chamber is empty.



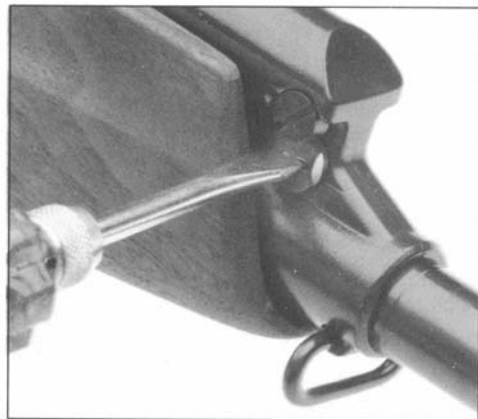
5 Locking the slide back

For target shooting and cleaning purposes the slide can be locked in the halfway-back position. First remove the magazine. Pull the slide back and press in the locking button located just in front of the trigger guard (see picture). Keep the button depressed and carefully allow the slide to move forward until it stops. Never allow the slide to strike against the locking pin under full pressure of the spring. An occasional blow will not damage the locking mechanism, but it is not designed for to withstand continuous abuse. In this position the slide and bolt prevent cartridges being fed into the chamber even if the magazine is now reattached. The slide can be freed by pulling it back slightly.



6 Adjusting the gas system

Two screws can be found on the right side of the gas chamber (see the picture beside), a locking screw (upper) and an adjustment plug (lower). By removing the locking screw the plug can be turned roughly 90° in an anticlockwise direction so that the locking screw now locates into a second recess in the plug. In this position the gas system is shut off and the rifle can be used as a hand-cocked single-shot weapon. This enables participation in competitions in which the use of semi-automatic weapons is not allowed.



The hole in the plug is dimensioned so that the rifle operates perfectly using factory-made cartridges with bullet weights of 10 - 14 g (150 - 210 grs). If you make up your own cartridges or use factory-made cartridges with a lighter bullet weight, ask your dealer for a substitute gas plug (optional).

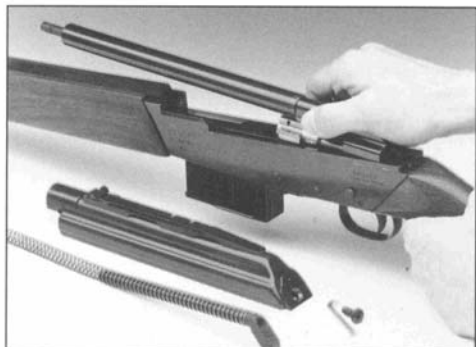
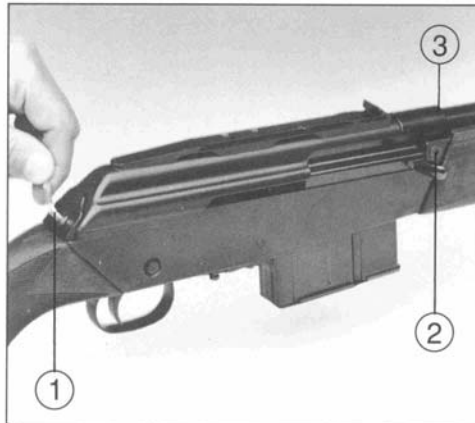
If you intend to load your own cartridges make absolutely sure that you are using the correct charge and type of powder. Sako-Valmet Ltd. do not accept any liability for damage caused by handloaded ammunition.

7 Disassembly

The cover is fastened to the receiver at the front by means of a dove-tail joint and at the rear by a hex screw. The cover has been designed as an integral part of the sight (scope/rear sight) attachment system and for this reason it has been adjusted at the factory by means of screw 2 (see picture) to have zero clearance. Consequently when removing the cover, after removing screw 1, the cover must be pulled straight back. In no circumstances should it be pushed to one side, or the rear end lifted up. If for some reason the cover does not readily slide back th 5 mm necessary for removal, tap the cover lightly backwards using the handle of a screwdriver or piece of wood at the point marked 3. This extremely secure attachment means that the cover cannot become loose during firing and also that when reattached it returns to exactly the same position thus

ensuring the point of aim remains unchanged. If necessary, the clearance can be adjusted by means of screw 2.

Having removed the cover, the recoil spring body and spring should be pushed forward, freeing it from its recess. This can now be removed to the rear. Now remove the slide and bolt assembly by pulling it into the rear position and lifting it up. The gas tube can now be removed easily. The bolt is detached from the slide by rotating it a quarter turn in a clockwise direction (seen from behind) and simultaneously pushing it backwards. Having freed it from its guide the bolt can be removed in a forward direction from the slide.



8 Cleaning

The disassembled parts can now be cleaned easily. Remove all dirt, remains of gun powder and old oil from the mechanism. Treat the mechanism with good quality gun oil. If the rifle is fired a great deal for example when target shooting, then the use of a motor cycle chain oil - which contains a molybdenum sulphide additive - is highly recommended for the bolt and slide. Oil of this kind can be obtained in aerosol cans. However we do not recommend this for cold weather use, and in temperatures below - 20oC all forms of lubrication, including gun oil, should be removed from the mechanism.

Check that the firing pin and extractor move freely (both are spring loaded). The hammer should only be treated with extremely thin oil.

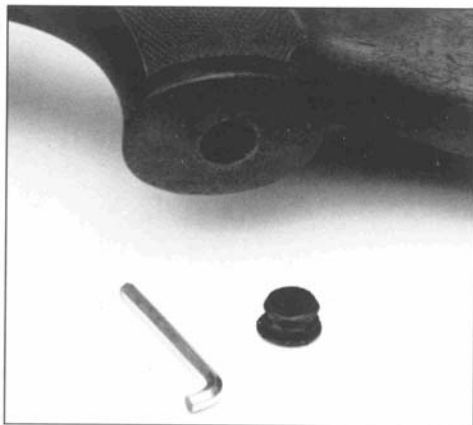
Cleaning the barrel each time the rifle is used or gets damp will extend the life of the weapon significantly. Even good quality gun oil should be removed before shooting. To prevent water or dirt getting into the rifle when hunting a black target patch can be put over the end of the barrel. This can even be fired through without adverse effects.

Please note: Never release the trigger of a disassembled rifle because the hammer may damage the ejector cam.

9 Assembly

Place the bolt into the slide, following the instructions for disassembly in reverse order. Make sure that the bolt is in the forward position. Slip the gas tube over the piston and position the assembly with the slide in the back position.

Push the gas tube into place and check that the front end locates with the gas chamber guide (see picture) and that the flat face at the rear end is downwards, thus preventing the tube from turning. When fitted correctly the gas holes in the tube are visible on both sides above the top edge of the forearm. Push the slide forwards and put the recoil spring body and spring into place. The cover can then be dropped into position and pushed into the dove tail groove at the front end of the receiver.



Under no circumstances should the cover be pushed sideways or upwards at this stage. Fasten the screw at the rear end of the cover tightly using the hex key.

Please note: Should a large amount of dirt or snow get into the mechanism while in use, a spare hex key for the cover is fitted inside the pistol grip. The black plastic plug can be removed easily using a knife blade, for example.

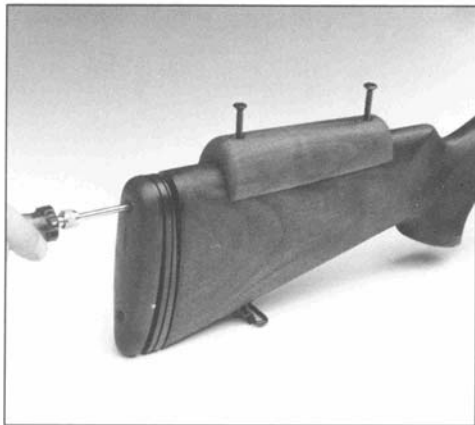


10 Stock

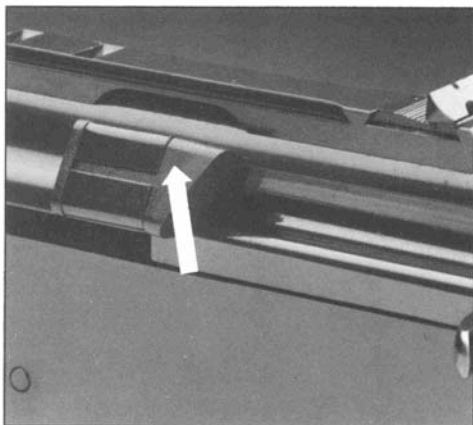
The stock length and butt angle of the rifle can be easily modified by means of handy distance and angle pieces which are available as optional accessories.

The stock is shaped primarily for use with open sights. Since the line of aim when using a scope is obviously higher, the height of the stock may have to be adjusted in order to permit a good shooting position. A detachable cheek piece complete with fitting screws is also available as an optional accessory for the rifle.

All the wooden parts of the rifle are made of high quality walnut which is treated with protective varnish at the factory. An occasional brush over with gun oil or varnish will keep the stock looking good for years to come.



Sako-Valmet weapons are designed, manufactured and tested to international safety standards (including C.I.P.). Incorrectly loaded home-made cartridges are the single biggest danger for the weapon and its user. The manufacturer takes no responsibility for the damage caused by cartridges of this kind. Always use good quality factory-made cartridges.



Technical data

Type:	Semi-automatic rifle
Caliber:	.308 Win and .30-06
Overall length:	108 cm (42.5")
Weight (without magazine):	3.7 kg (8.2 lb)
Weight of loaded magazine:	2-rd magazine 230 g (8.1 oz) 5-rd magazine 290 g (10.2 oz) 9-rd magazine 440 g (15.5 oz)
Barrel length:	53.5 cm (21")
Number of grooves:	4
Rate of twist:	11" (280 mm)
Caliber dimensions:	Large caliber 7.82 mm Small caliber 7.62 mm
Sights:	Open sights and attachment truck for scope
Stock and fore-arm:	Walnut
Optional accessories:	Distance and angle pieces Cheek piece Scope mount Substitute gas plug for lighter bullet weights Decorated Valmet sling

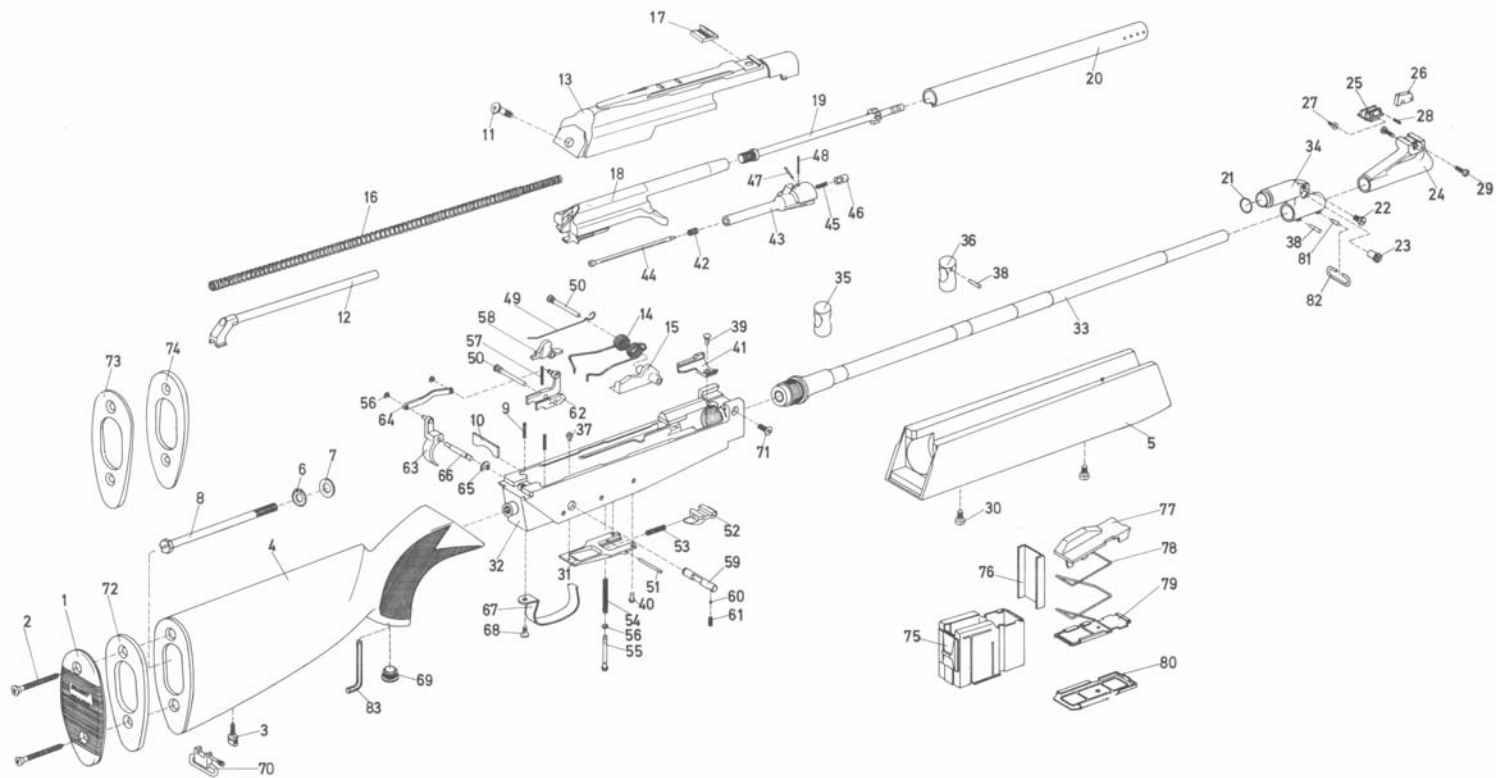
HUNTER .308 m-88

1	209540M	Butt Plate Lexan 500 black	36	400220	Support Tube, front	71	400440	Hex Screw M5 x 10
2	204425	Screw 4.8 x 50 2 pcs	37	218230	Trigger Stop	72	209420	Distance Piece, black
3	208440	Sling Swivel Base	38	251040	Taper Pin 3 x 14 2 pcs	73	209560	Angle Piece
4	400490	Stock m-88	39	252631	Cam Plate Rivet	74	209550	Angle Piece
5	400500	Fore-end m-88	40	253800	Rivet 4 x 6,5 2 pcs	75	400360	Magazine Body Assembly 5-rd
6	251100	Washer	41	255651	Bolt Gam Plate	76	400410	Side Plate
7	252550	Washer	42	219101	Firing Pin Spring			
8	218350	Stock Screw	43	219660	Bolt (Carrier Assembly)	77	218520	Feeding Ramp Assembly
9	JE9088	Tension Pin 2,5 x 16 2 pcs	44	219780	Firing Pin	78	219460	Spring
10	400430	Recoil Plate	45	251690	Extractor Spring	79	219620	Spring Plate Assembly
11	400080	Cover Screw	46	400610	Extractor Pin	80	219500	Bottom Plate
12	400100	Recoil Spring Body	47	256130	Firing Pin	81	400640	Taper Pin 3 x 6
13	400110	Cover, complete	48	256360	Firing Pin Retainer Pin	82	400630	Sling Swivel
14	251250	Hammer Spring	49	219950	Pin Retainer Spring	83	400650	Hex Screw M4
15	218140	Hammer	50	251230	Sear Pin 2 pcs			
16	251781	Recoil Spring	51	400320	Catch Pin			
17	219765	Sight Plate	52	400040	Magazine Catch			
18	400130	Slide	53	400300	Spring			
19	400140	Gas Piston	54	400310	Locking Button Spring			
20	400150	Gas Tube	55	400230	Locking Button			
21	400570	O-Ring 15 x 2	56	KG6506	(Retaining) Ring 2.3 3 pcs			
22	219450	Locking Screw	57	251220	Sear Spring			
23	400600	Gas Plug	58	215610	Disconnecter			
24	400030	Front Sight Base	59	400240	Safety Button	19	400730	Gas Piston
25	400260	Front Sight Plate	60	A00002	Steel Ball Ø 3	32	400180	Receiver
26	400250	Front Sight	61	201101	Spring	33	400190	Barrel
27	400450	Screw M3 x 6	62	218260	Sear, complete	34	400720	Gas Block
28	JE9005	Tension Pin 2 x 8	63	218290	Trigger, complete	75	400590	Magazine Body Assembly 5-rd
29	400460	Screw M4 x 12 2 pcs	64	218310	Trigger Bar	76	-	-
30	219810	Screw 2 pcs	65	KG6508	(Retaining) Ring 4	77	219610	Feeding Ramp Assembly
31	400050	Catch Body	66	218330	Trigger Pin			
32	400180	Receiver	67	400020	Trigger Guard			
33	400190	Barrel	68	218250	Trigger Guard Screw			
34	400200	Gas Block	69	400470	Plastic Plug			
35	400210	Support Tube, rear	70	208430	Sling Swivel Tikka			

HUNTER .30-06 m-88

Similar to .308, except

19	400730	Gas Piston
32	400180	Receiver
33	400190	Barrel
34	400720	Gas Block
75	400590	Magazine Body Assembly 5-rd
76	-	-
77	219610	Feeding Ramp Assembly





Sako Ltd., P.O. Box 149, SF - 11101 Riihimäki, Finland
Phone +358 14 7431, Telefax +358 14 720446