



## Step 1: Introduction To Help

---

Assumption: you want a quick introduction to help file development.

Before creating a help file, it is important to understand basic help terminology and methodology.

---

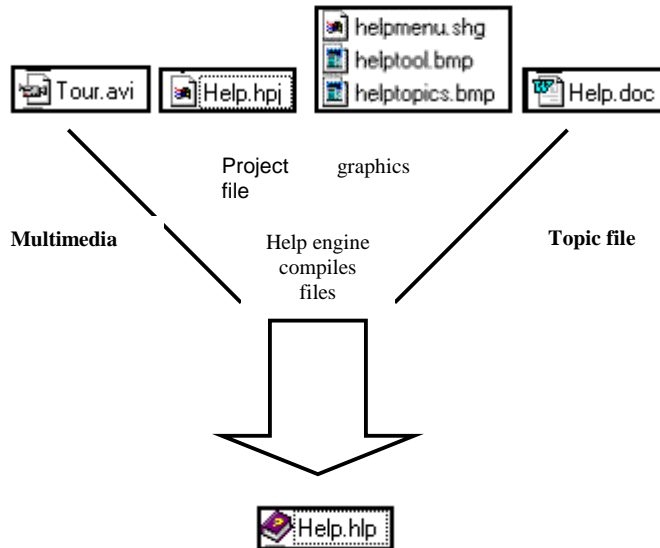
- ◆ Help Methodology: An approach to create and implement a help system. Methodologies vary dependent on size, timing, and objectives of the overall project. Examples include; stand-alone help systems, integrated help systems, embedded help systems, context-sensitive help systems, and modular help systems.
- ◆ Help Authoring Tool (HAT): A development environment tool that allows the help author to create, test, and compile help files.
- ◆ WinHelp: A help system file designed for a windows application system. Widely used type of help system.
- ◆ Web Help: A web or html help system file designed for an internet, intranet, or java application. Slowly gaining in popularity.
- ◆ Java Help: A java help system file designed for a java or html application. New and emerging type of help system.
- ◆ Cross Platform Help: A web or html help system designed for independent browser selections and multiple-platforms.
- ◆ Compiled Help: An embedded coded text file that has been converted into an online help system.
- ◆ RoboHelp Terminology: Specific jargon for using with the RoboHelp® Office HAT.
  - RTF File: Rich Text File that maintains the format of your help document.
  - DOC File: MSWord® document that used to develop a winhelp system.
  - CNT File: Contents file used to display the topic associated in a help file.
  - HLP File: Compiled winhelp project file.
  - HPJ File: Uncompiled winhelp project file.



## The Big HELP Picture

### Compiling

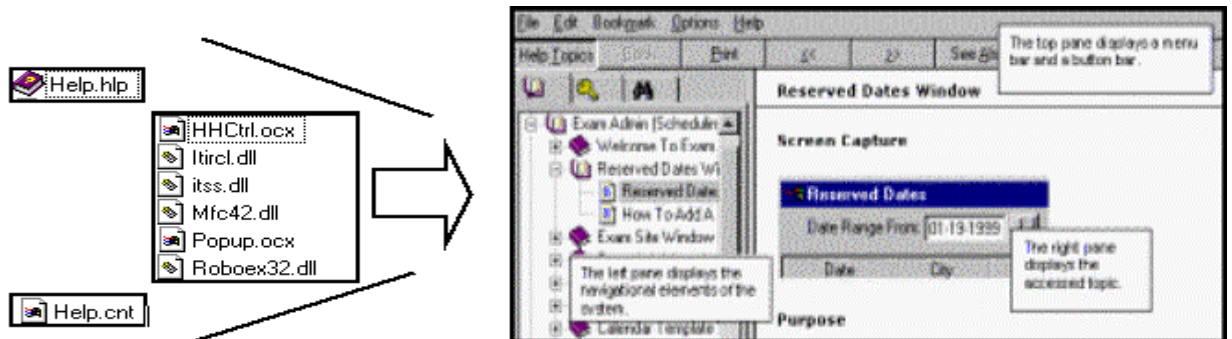
A Help system is a combination of individual elements commonly referred to as a help project. This system is produced in a HAT. Some files contain graphics and text; other files aid in the formatting or structure of the help file. In a process called *compiling*, a HAT turns these individual files into one compiled source help file.



These individual files are compiled with a windows Help engine through a HAT (such as RoboHelp) and the results are one compiled help file.

### Viewing

To view the help file, you need to ensure the system files, the contents file, and the compiled help files are distributed appropriately to your audience.



Go to Step 2: Creating A Help Project Using RoboHelp Classic.



## Step 2: Creating A Help Project Using RoboHelp Classic®

---


Assumption: you want to create a winhelp file for the EIS project using RoboHelp Classic.

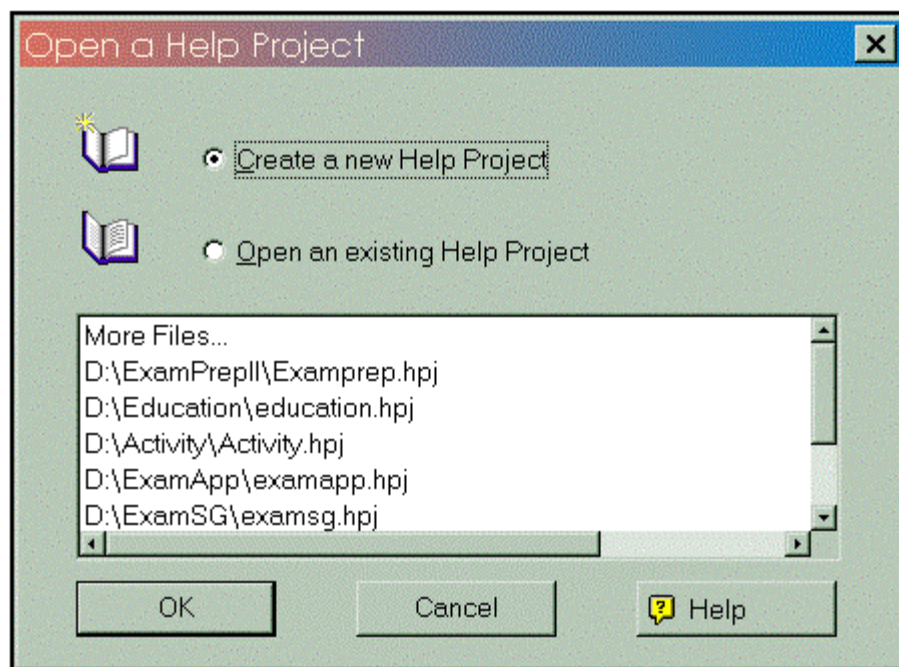
RoboHelp Classic is a help-authoring tool that allows you to create help projects using Microsoft Windows® as your development environment. You must create a help project before you create a help file.

---

To create a new help project:



1. Double-click the  icon on your desktop.
2. Check the 'Create A New Help Project' option on the Open A Help Project Window and click Ok button.

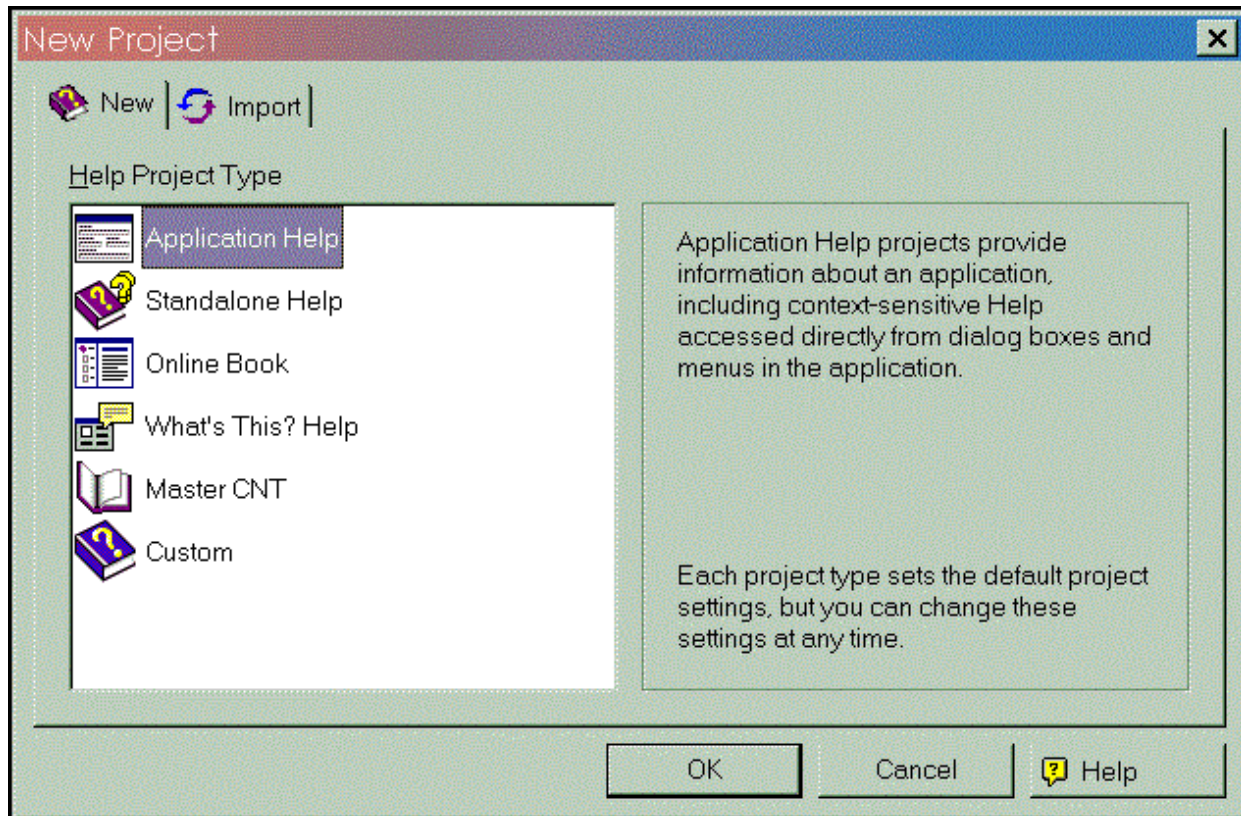




## Ten Steps To Creating A Help Project!

---

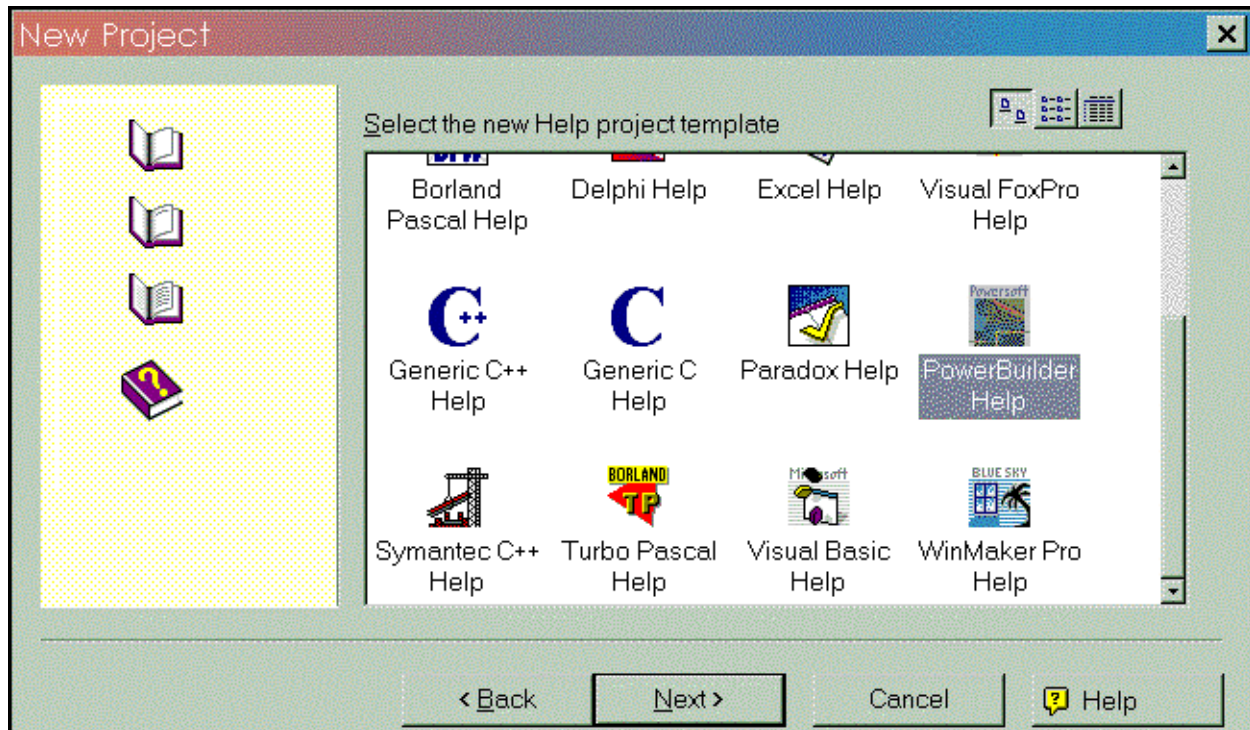
3. Select the type of help project you want to create. Choose the Application Help option and click Ok button.



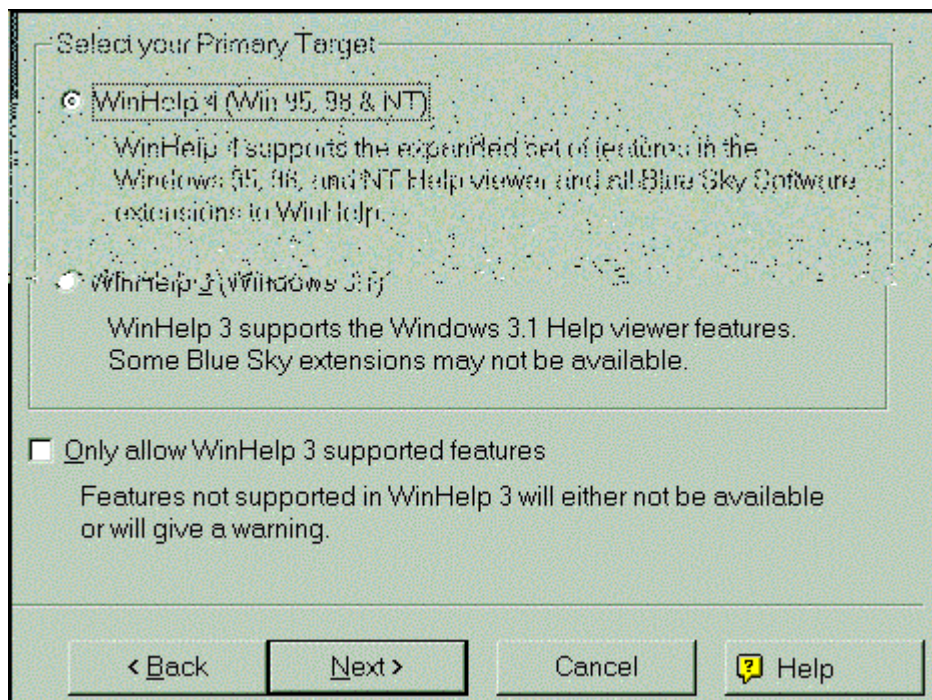




4. Select the Powerbuilder Application type and click Next button.



5. Select the target type for the help project. Choose the WinHelp 4 option and click Next button.





## Ten Steps To Creating A Help Project!

---

6. Enter **“TEST”** as the title of this Help project. Enter **“Test”** at the name of the project file. Double-check where you want the project to be stored. You should store this project in a working or development area. Check the WinHelp 2000 (tri-pane view, utilized in the EIS help system) option. Click Finish button to create your help project.

New Project

What is the title of this Help project?  
Please enter the Help Project title here

What is the name of the project file?  
HelpFile

Where should the new project be stored?  
D:\HelpFile Browse...

Create WinHelp 2000 Explorer View

< Back Finish Cancel Help



Go to Step 3: Using Robohelp Explorer To Define Your Help File.



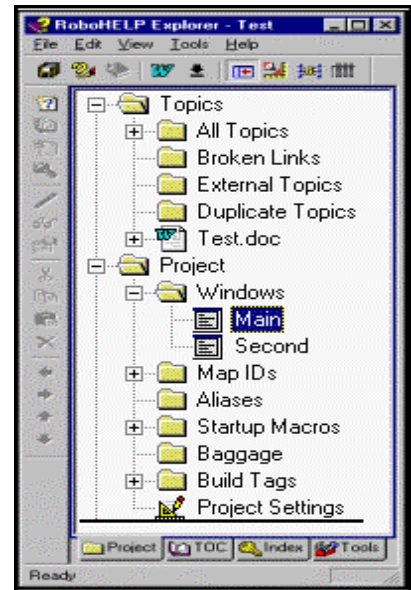
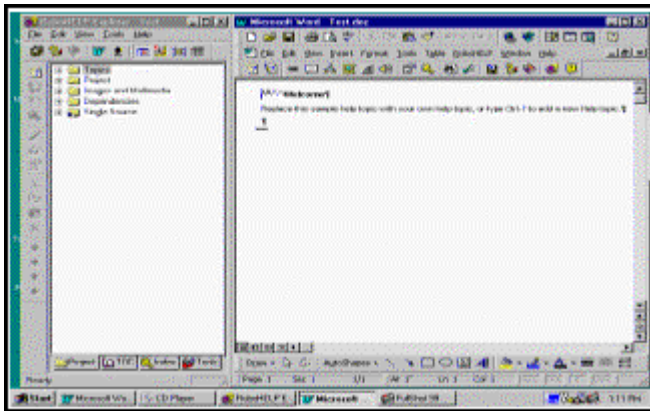


## Step 3: Using RoboHelp Explorer® To Define Your Help File.

Assumption: you have completed Steps 1 and 2 and have the “TEST” help project to open to use in this step.

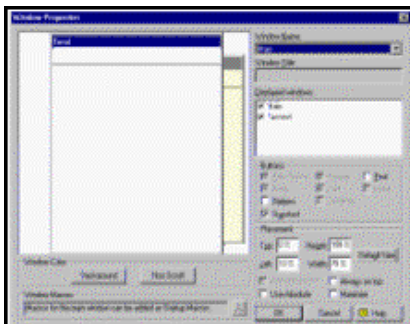
The RoboHelp Environment encompasses a two-pane development arena. The RoboHelp Explorer is the left pane used to define your help project. Specifically, we will focus on the Project and TOC tabs. The right pane is currently open and is the Microsoft Word environment that we will focus on in Step 4.

The RoboHelp Classic development environment has two separate working areas. The left pane is the project explorer view and the right pane is the Word view.



To define your project help windows:

1. Click the project tab, the first tab on the lower left bar of the left Explorer pane.
2. Click the Project (+) sign in the left pane, open the Windows folder, and double-click the Main option.
3. This launches the Windows Properties Window.



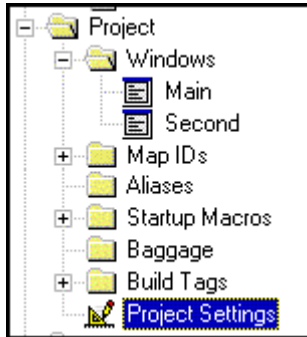
This window allows you to define Main and Secondary windows (used for procedures). Use the mouse to size the active Main window template in the display panel. Or set the Height at **53%** and Width at **72%** in the property panel. Window size is dependent on how you arrange content information. \*Projects that display in the Win2000 view, suppress secondary windows. You still need to set the Main window properties.



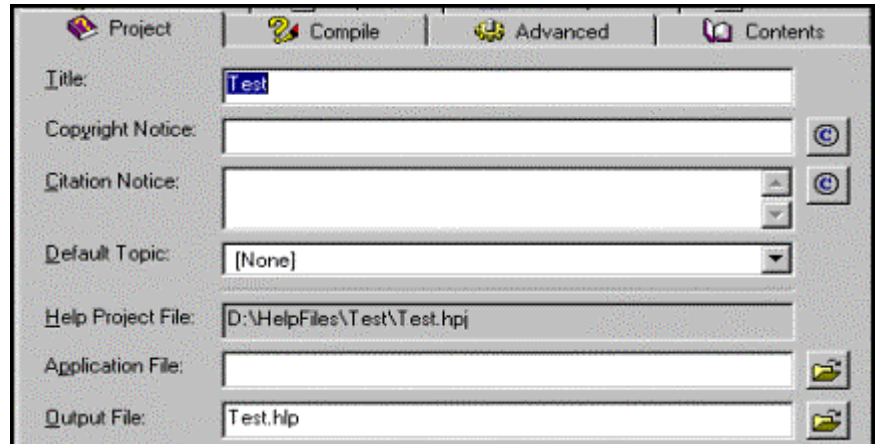
## Ten Steps To Creating A Help Project!

To define your project settings:

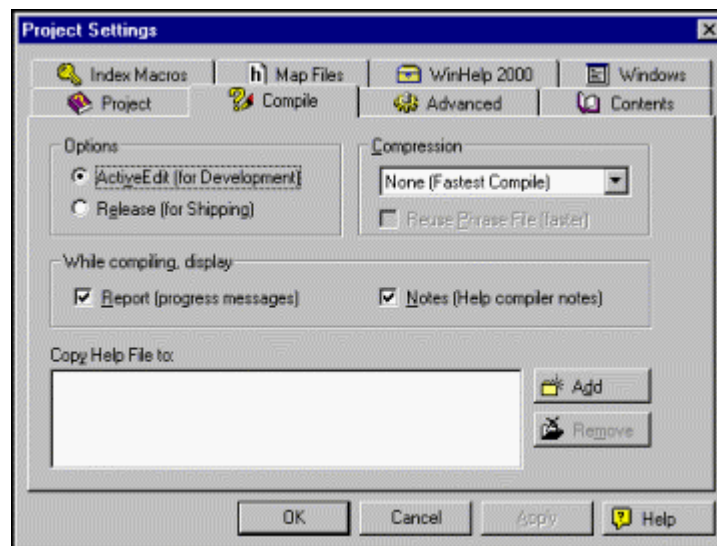
- Click the project tab, the first tab on the lower left bar of the left Explorer pane.
- Double-click the Project Setting option. This launches the Project Settings Window. This is one of the most important RoboHelp Classic interfaces used to evaluate and define project details.



- Click the Project default tab. Enter “**Copyright©1999 DRE**” for the Copyright Notice. Enter “**All rights reserved**” for the Citation Notice. Click Ok button.



- On the Compile Tab, check the “**ActiveEdit (for Development)**” option. This sets the project to function in an edit and development environment. When you are ready to distribute the help project, you will need to re-compile with the Release option checked. Click Ok button.

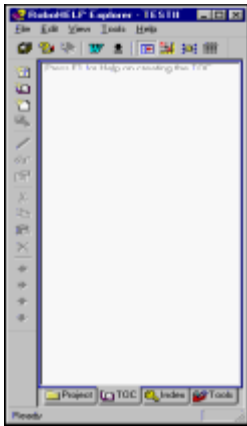







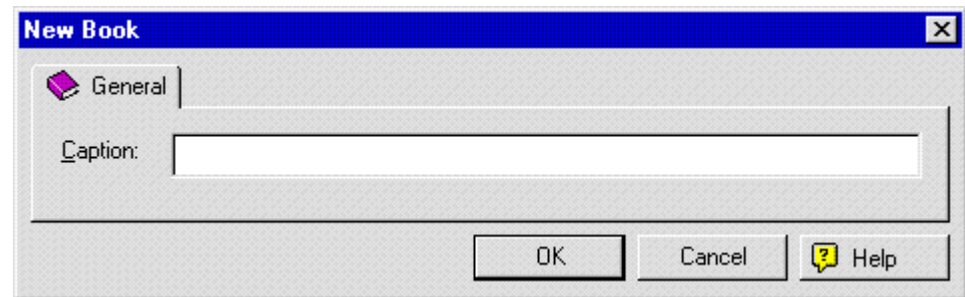
To define your Table of Contents (TOC):


1. Click the TOC tab, the second tab on the lower left bar of the left Explorer pane.

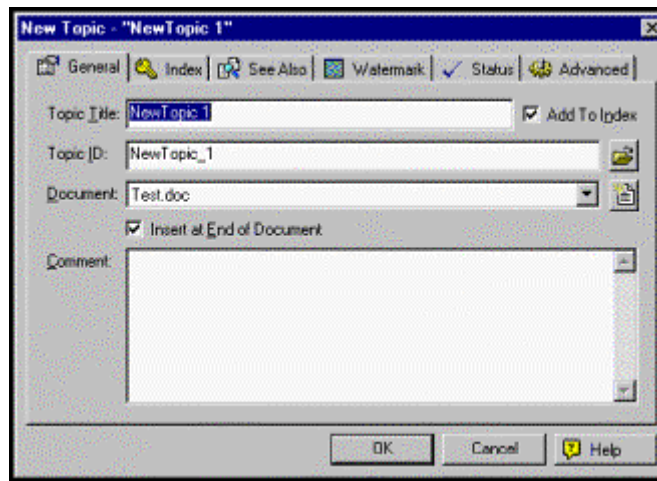


What you assign as books and topics is what is defined as the project TOC and eventually the .CNT file. The EIS project files are defined with a Master CNT structure, see the RoboHelp Classic Manual for development instructions. For this exercise, we will assign a project TOC.

- Click the new book icon  in the left tool column. This launches the New Book interface.
- Enter the caption “**Sample Help**” for the book title and click Ok button.

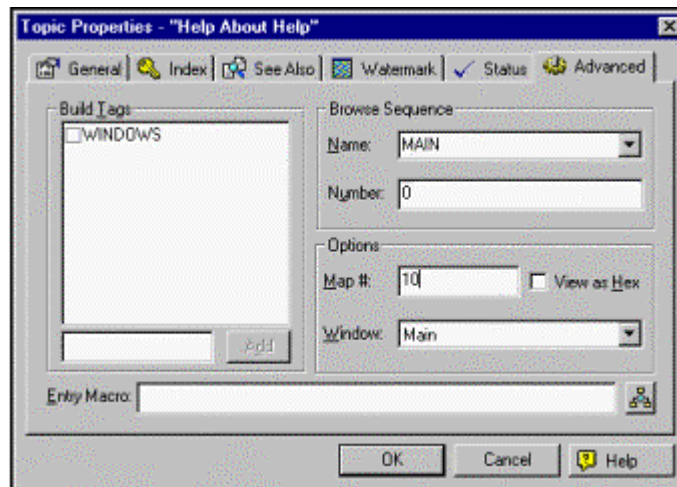


- Click the new topic icon  in the left tool column. This launches the New Topic interface.
- Click the General Tab (default tab):
  - a. Enter the Topic Title “**Help About Help**”. Notice the Topic ID field automatically fills.
  - b. Check the “**Add To Index**” option (the default is checked). This ensures your topic is added to the index.
  - c. Check the “**Insert at End of Document**” option. This places the topic at the end of all the topics in Word environment to avoid location confusion.






- Click the Advanced Tab:
  - a. Enter the Map ID # “10” in the Options box. You can also assign Map IDs automatically. When assigning manually, try to space out the numbers for additional topics, for example, the next Map ID should be “15”. Map IDs are used by an application to call a specific topic or utilize context-sensitive help.
  - b. Use the drop-list to select “Main” for the Window selection.
  - c. Notice the Entry Macro field, you can add project macros. The EIS help files use a few basic macros. Enter the following:  
“**CreateButton(TABS,TABS,PopupID(test.hlp,help\_tabs))**”.
  - d. Check Ok button.



7. The Explorer view TOC panel should now look like this:



8. Click the compile tool icon  to compile and save the “Test” project. On the Results window, click close, if there are no errors. If errors, trouble-shoot using the error wizard.



Go to Step 4: Using Word To Create Topics.

