

**S  
y  
s  
t  
e  
m**

## **SAMPLES**

**Training Excerpts from:**

*\*System Admin/Developer Manual*

© Samples are not for reproduction.

**S  
A  
M  
P  
S**

## 1.1 Development Workstations

EIS managers and administrators maintain the development workstations. The minimum characteristics and capacity of these workstations are the same as for the client workstations.

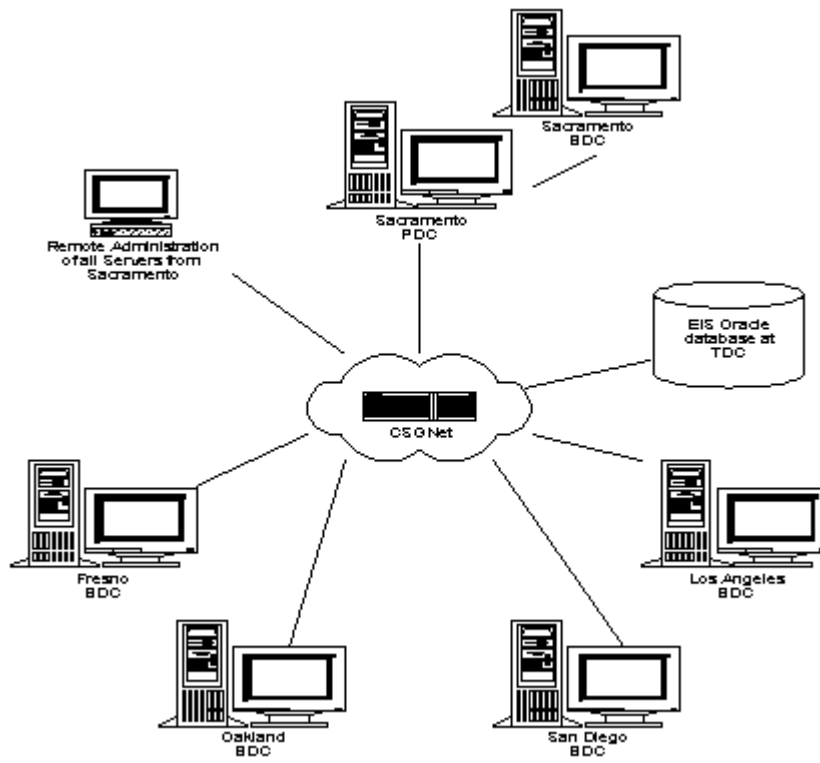
The following software is also used as part of the EIS and is installed on each Development Workstation:

Software Installed On A Development Workstation
PowerBuilder v6.0
Cornerstone Object Library v6.0
Oracle Designer/2000 v2.1 (installed on one designated workstation only)
Oracle Net v. 8.0.4.0.0
Crystal Reports v7, a tool for ad-hoc reporting
Microsoft Outlook
Microsoft Word 97, SR-2
RoboHELP v7, a tool for on-line authoring and context-sensitive help (installed on one designated workstation only)
MKS Source Integrity v7.3
Help Desk Application (TBA)
New EIS

## 1.2 Wide Area Network (WAN)

Each workstation communicates with the EIS Database Server over a WAN. This WAN is a private network administered by Teale Data Center (TDC) dedicated to data communication between the DRE Sacramento staff and headquarters and district offices in Oakland, Los Angeles, San Diego, and Fresno.

TDC provides connectivity between DRE offices, to the Oracle relational database, and access to Internet services, over a statewide WAN utilizing TDC's California State Government Network (CSGNet). DRE's Sacramento, Los Angeles, and Oakland offices are connected to CSGNet through T1 lines. The San Diego and Fresno offices are connected through 56KB lines.



### 1.3 Unix Database Server

The Unix Database Server is a Sun Enterprise 5500. This system is configured as follows:

Database Server Configuration
Four RISC based CPUs.
2 GB of RAM.
70 Gigabytes are currently allocated to DRE projects.

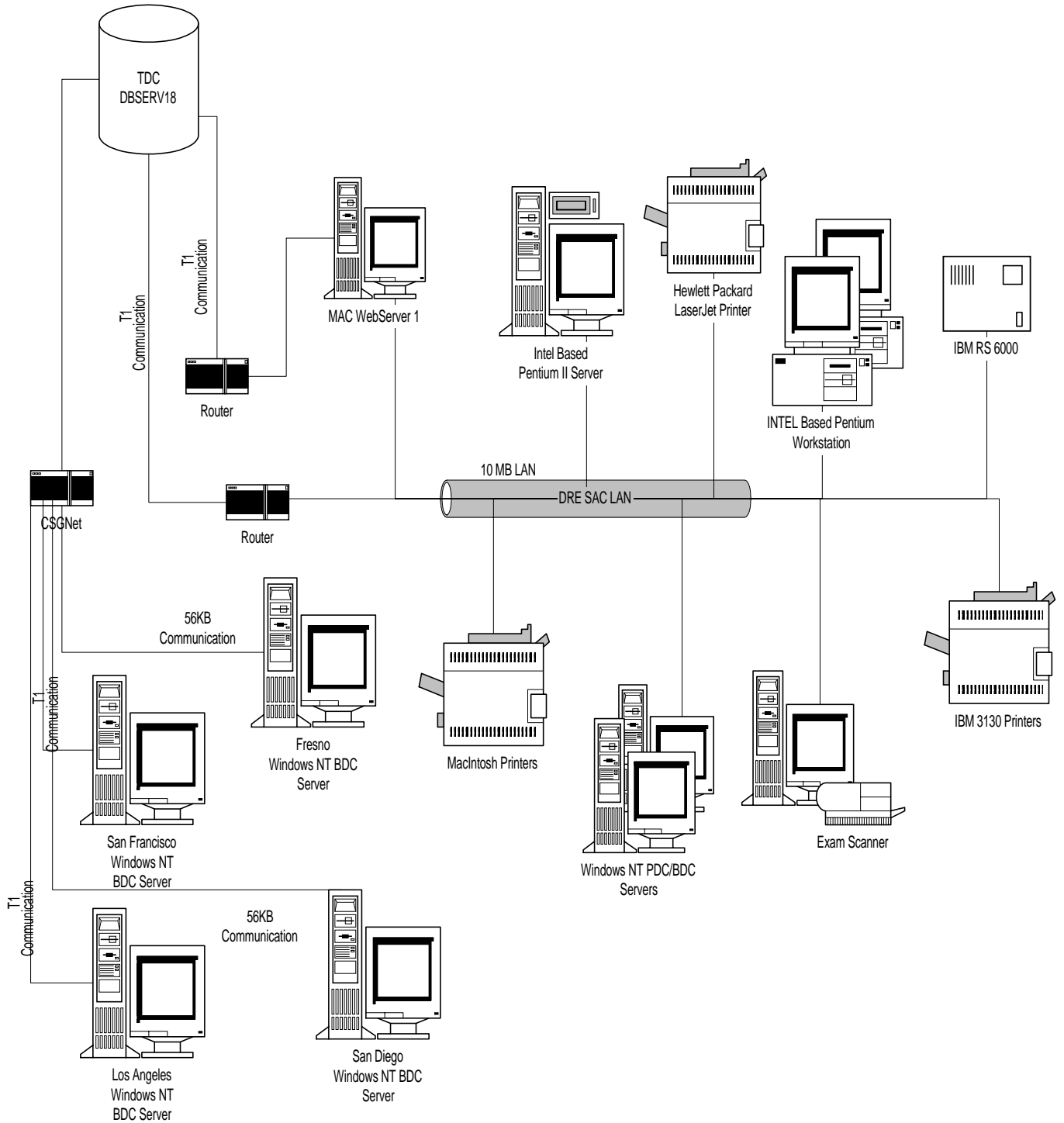
Software Installation On Database Server
Operating System: SunOS 5.6
Oracle8 Enterprise Edition Release 8.0.4.3.0

### 1.4 NT File Server

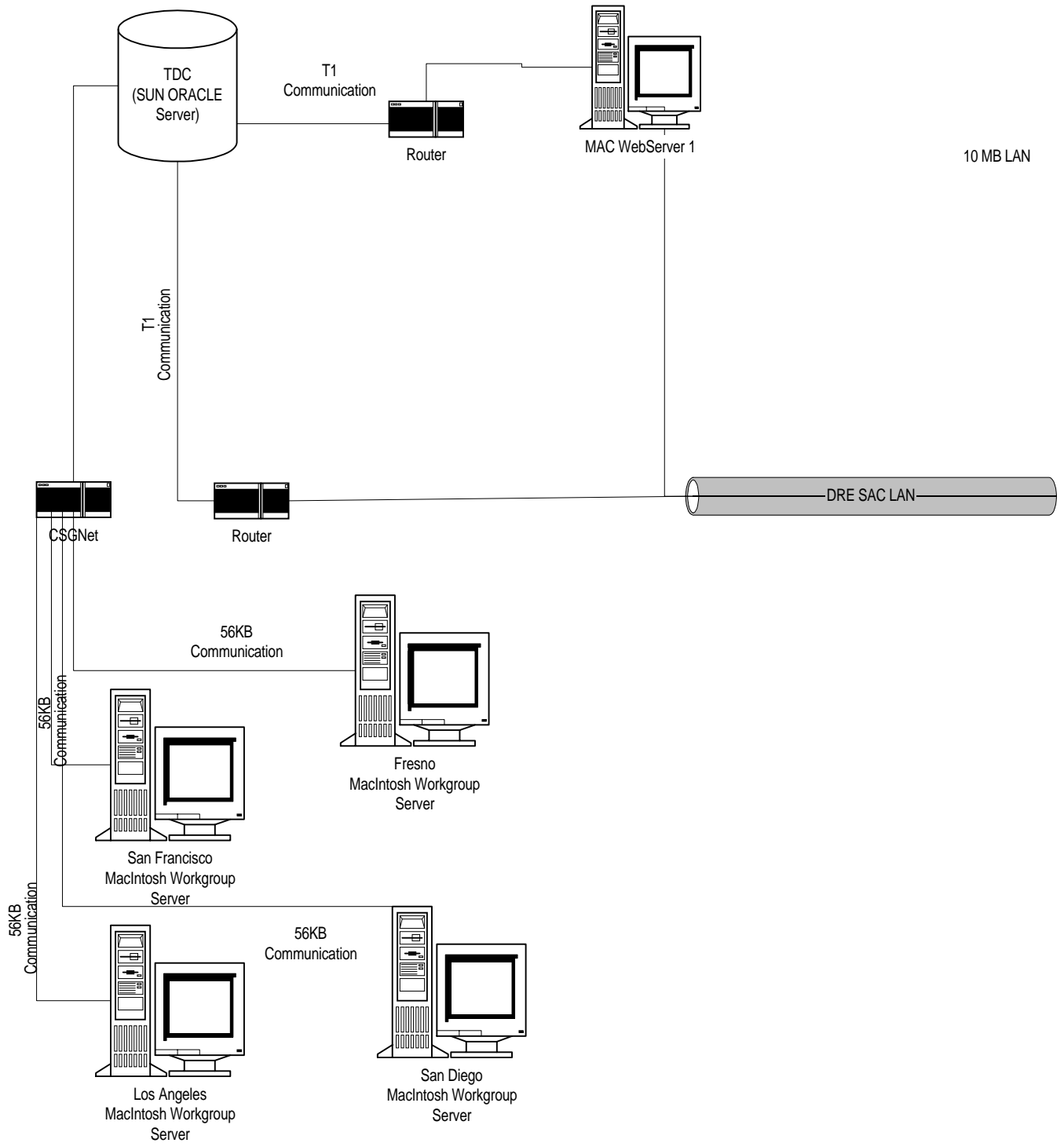
The Windows NT File Server is a Compaq Proliant 2500 model server, configured as follows:

Database Server Configuration
Dual Pentium Pro, 200MHz
256 MB RAM
16 GB RAID hard drive storage
Microsoft Windows NT Server, version 4.0
15" monitor
APC Smart UPS 1400 backup power supply
ARC Serve NT Backup software

### 1.5 Appendix: Full DRE SAC LAN



## 1.6 Appendix: Partial DRE SAC LAN



## 2. EIS System Setup

---

### 2.1 NT-Workstations (Client and Development)

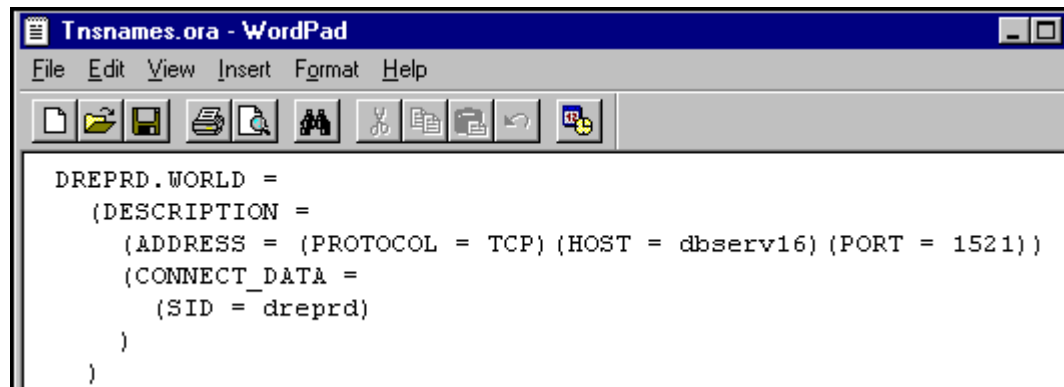
DRE staff use Windows NT workstations to access the New EIS. These workstations are connected to the local area Windows NT network and to the Oracle database using Oracle Net (SQL\*Net).

There are some common applications associated with running the EIS system on both workstation types. This section discusses the setup and configuration of the NT workstations, and will cover installation of the EIS executable, registry changes, Oracle Net, Crystal Reports, MS Word, and the EIS Security Application.

#### 3.1.1 Oracle Net Installation on Client And Development Workstations

##### Client Installation

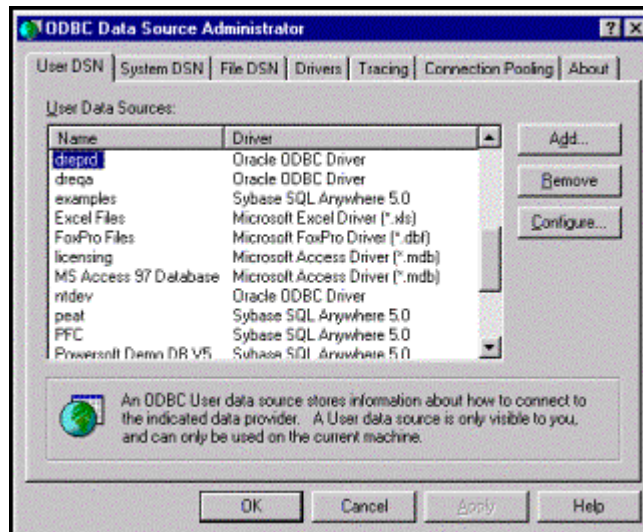
1. Complete a full install of Oracle Net8.
  - a) Go to Path: D\Orant\Net80\Admin\Tnsnames.ora.
  - b) Open the Tnsnames.ora file and define the DREPRD.WORLD parameters.



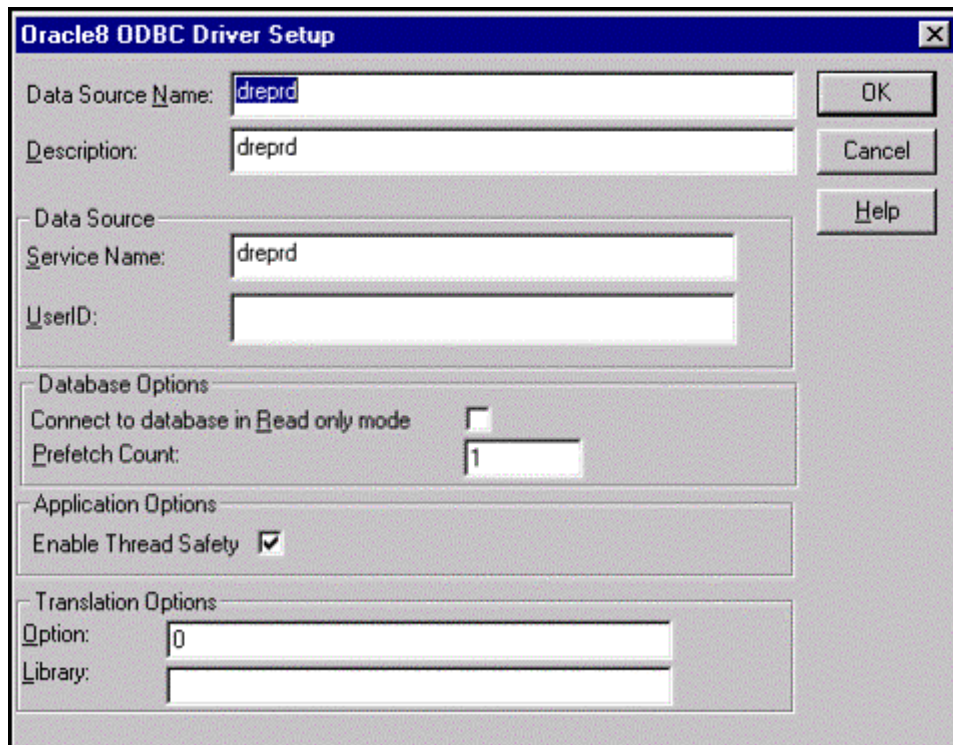
```
DREPRD.WORLD =
  (DESCRIPTION =
    (ADDRESS = (PROTOCOL = TCP) (HOST = dbserv16) (PORT = 1521))
    (CONNECT_DATA =
      (SID = dreprd)
    )
  )
)
```

**Client Installation (continued)**

2. Complete a full install of Oracle ODBC Driver.
  - a) Go to Path: Programs>Designer 2000 R2.1 Direct Drivers>Microsoft ODBC Administrator.  
Open the ODBC Interface:



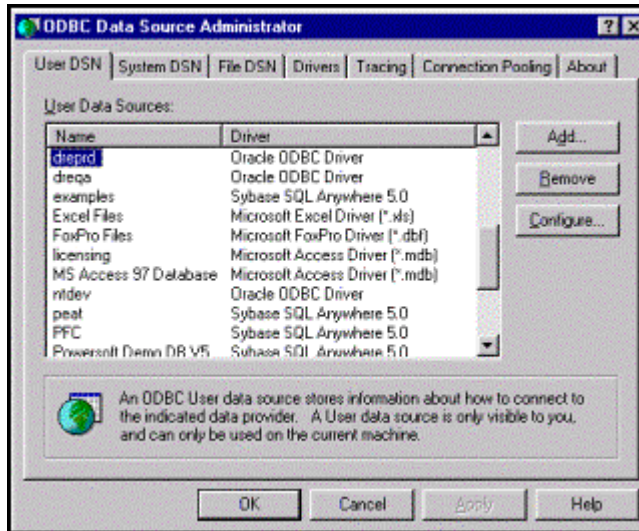
- b) Define DREPRD as follows:



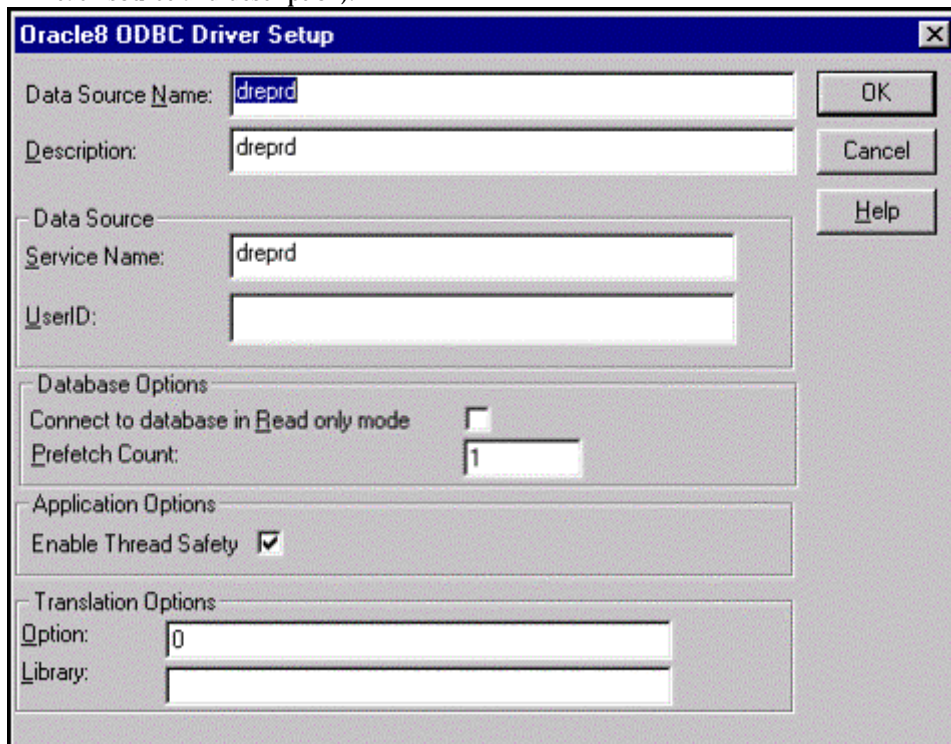


**Development Installation**

1. Complete a full install of Oracle Net8; same as the client installation. Include these environments: ntdev, dreqa, and dreprd.
2. Complete a full install of Oracle ODBC Driver; same as the client installation. Include these environments: ntdev, dreqa, and dreprd.
  - a) Go to Path: Programs>Designer 2000 R2.1 Direct Drivers>Microsoft ODBC Administrator. Open the ODBC Administrator interface.



- b) Define DREPRD, DREQA, and NTDEV as follows (use the same options, but relative to each source and description):



### 3.1.2 New EIS Installation on Client And Development Workstations

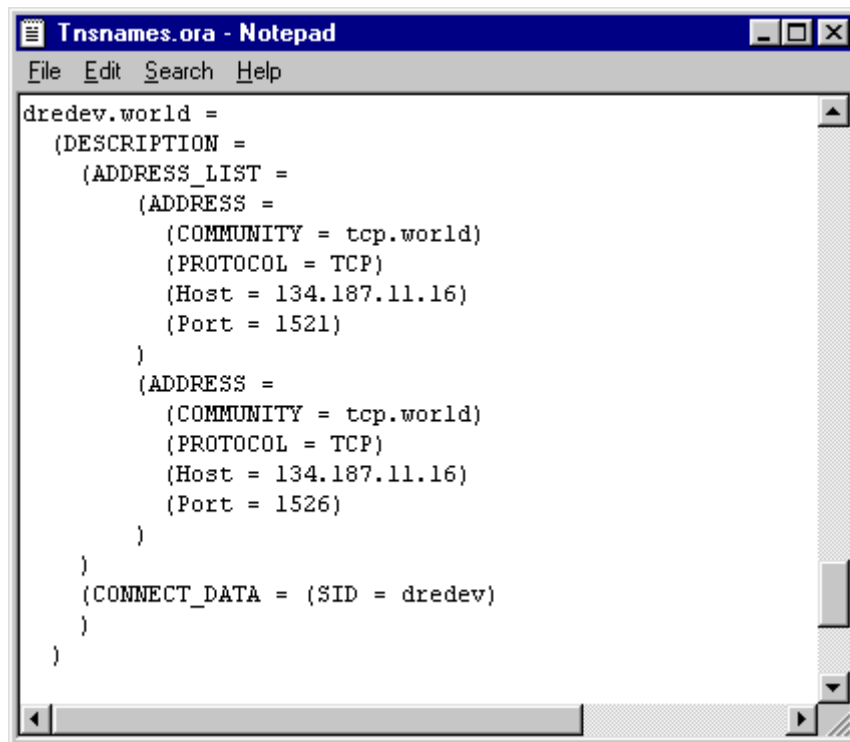
#### Client Installation

The New EIS client installation is made easy by utilizing a deployment tool. See 3.1.3 for details.

#### Development Installation

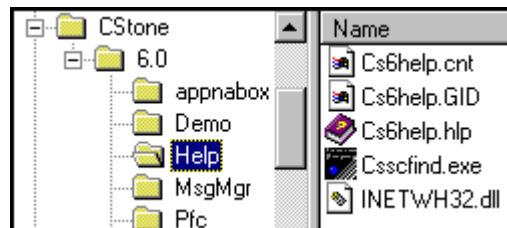
3. PoweBuilder: perform a full installation of PowerBuilder 6.0 and the PoweBuilder 6.01 patch.
4. MKS Source Integrity: perform a full installation of MKS Source Integrity and the MKS Source Extensions.
5. Designer 2000: perform a full installation of Oracle Designer 2000. Further define using the following:

Go to Path: D:\Orant\Network\Tsnames.ora, open TSNAMES.ORA and define the DREDEV.WORLD parameters.



```
Tsnames.ora - Notepad
File Edit Search Help
dredev.world =
  (DESCRIPTION =
    (ADDRESS_LIST =
      (ADDRESS =
        (COMMUNITY = tcp.world)
        (PROTOCOL = TCP)
        (Host = 134.187.11.16)
        (Port = 1521)
      )
      (ADDRESS =
        (COMMUNITY = tcp.world)
        (PROTOCOL = TCP)
        (Host = 134.187.11.16)
        (Port = 1526)
      )
    )
    (CONNECT_DATA = (SID = dredev)
  )
)
```

6. Cornerstone Libraries: perform a full installation of Cornerstone 6.0. Although all source libraries are included in the source install, the developer access the Help files separately and these are installed only with the full Cornerstone installation.



**Development Installation (continued)**

## 7. Oracle Net8: perform a full installation of Oracle Net 8.

Go to Path: D:\Orant\Net80\Tsnames.ora, open TSNAMES.ORA and define the NTDEV.WORLD, DREQA.WORLD, DREPRD.WORLD, and the DREDEV.WORLD parameters:

```
# D:\ORANT\NET80\ADMIN\TNSNAMES.ORA Configuration File:D:\orant\net80\admin\  
# Generated by Oracle Net8 Assistant  
  
NTDEV.WORLD =  
  (DESCRIPTION =  
    (ADDRESS = (PROTOCOL = TCP)(HOST = drent)(PORT = 1521))  
    (CONNECT_DATA = (SID = ORCL))  
  )  
  
DREQA.WORLD =  
  (DESCRIPTION =  
    (ADDRESS = (PROTOCOL = TCP)(HOST = 134.187.11.16)(PORT = 1521))  
    (CONNECT_DATA = (SID = dreqa))  
  )  
  
DREPRD.WORLD =  
  (DESCRIPTION =  
    (ADDRESS = (PROTOCOL = TCP)(HOST = 134.187.11.16)(PORT = 1521))  
    (CONNECT_DATA = (SID = dreprd))  
  )  
  
DREDEV.WORLD =  
  (DESCRIPTION =  
    (ADDRESS = (PROTOCOL = TCP)(HOST = 134.187.11.16)(PORT = 1521))  
    (CONNECT_DATA = (SID = dredev))  
  )
```

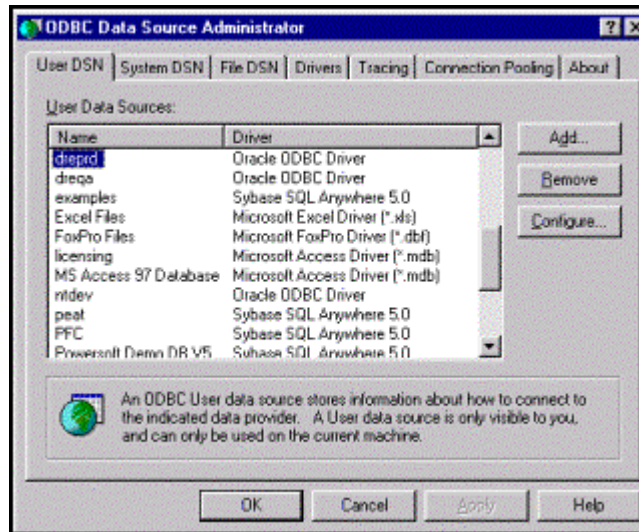
**3.1.3 Synchronizer Installation on Client And Development Workstations**

A deployment tool called “Synchronizer” is used for the New EIS. This tool simplifies the software distribution process. The installation process is fully detailed in the EIS Deployment Manual, located in this section’s appendix.

### 3.1.4 Crystal Reports Installation on Client And Development Workstations

#### ☑ Client Installation (Adhoc Users Only)

8. Complete a full install of Crystal Reports (see Crystal Reports Manual).
9. Set Up ODBC data source for the DREPRD environment.
  - a) Go to Path: Programs>Designer 2000 R2.1 Direct Drivers>Microsoft ODBC Administrator.  
Open the ODBC Interface:



- b) Define DREPRD as follows:

