

F I FULLER INDUSTRIES, INC.

129 Halford Place
P.O. Box 306
Rockton, IL 61072-0306
<http://www.fuller-industries.com/>

Phone: **815.624.8292**
Fax: **815.624.1118**
email: sales@fuller-industries.com

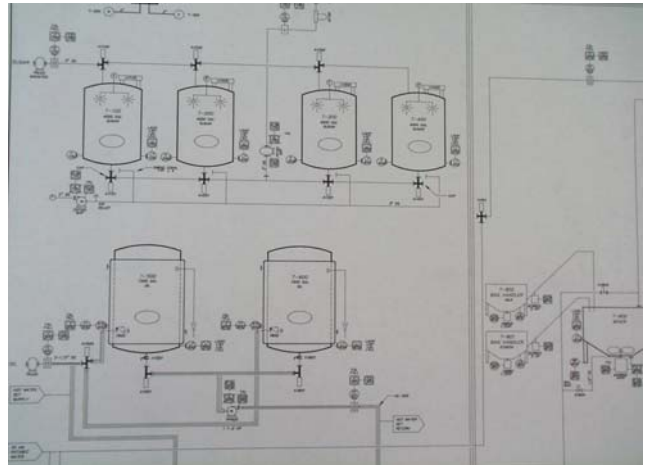


We provide complete system documentation, featuring:

- Point-to-Point Electrical Design Drawings
- Control Panel Layout and Bill of Material
- Detailed Piping and Instrumentation Design Drawings, Piping Layout, and Bill of Material
- System Control Write-Up, detailing operators, indicators, setpoints and alarms
- Plant Equipment Layout
- Contractor Bid Packages

We provide complete process automation products and services, including:

- Control System Programming and Start-Up, featuring Allen-Bradley SLC/PLC/CLX families, Siemens S5,S7, and Automation Direct
- HMI programming, featuring RS-VIEW, PanelView, Intellution, Wonderware, and Maple Systems
- Process Piping Design from sterile processing to water treatment systems



Our installed systems are time tested and proven. Here is just a partial listing of our systems at work:

- 2400 GPM Ultra Pure Water Treatment Plant
- (4) Tank, 10,000 Gallon Cream Style Corn Batching System
- (4) Tank, 18,000 Gallon Liquid Sucrose System
- (6) Tank, (16) Circuit Clean-In-Place System
- (9) Tank, 18,000 Gallon Syrup Batching System
- Aseptic Pudding Batching and HTST System
- Automated Operating Efficiency Reporting
- Casepacker and Conveyor System
- Remote Plant Diagnostic System
- Plant-Wide Data Highway Integration
- Pulse Fired Gas Burner Controls
- (12) Station Dial Index Machine Controls



Fuller Industries, Inc.
Partners in Productivity