



STG - Systems

Server Packaging Instructions : 5U x3400, x3500 (7977, 7975, 7973)

No. SG-P-01348 Rev. 0

Status: In Production

Document Number	SG-P-01348
Revision Number	0
Category	ISC-Global Procurement
Document Type	Procedure
Date In Production	May-31-2006
Author(s)	Vanessa Labare/Raleigh/IBM, Charles Przybylski/Raleigh/IBM
Document Owner	Jeffrey Miller/Raleigh/IBM
Location	RTP
Department	GQBA
Last Updated	May-31-2006
Last Modified By	Charles Przybylski/Raleigh/IBM

Procedure Description

Body

- Information contained in this document is for reference purposes only
- Process and Part Numbers may vary in each manufacturing location
- Refer to local site procedures and Bill of Materials for any substitutions
- No deviation is to be made to the overall assembly without prior written approval from the responsible Packaging Engineer

Table of Contents

- Section 1 - Applicable Systems, MTM Listing
- Section 2 - Unit Packaging
- Section 3 - Manufacturing Palletization
- Section 4 - Distribution
- Section 5 - Material Listing (BOM)

Section 1 - Applicable Systems, MTM Listing

These packaging instructions apply to the following machine types:

7977, 7975, 7973 - (x3400, x3500)

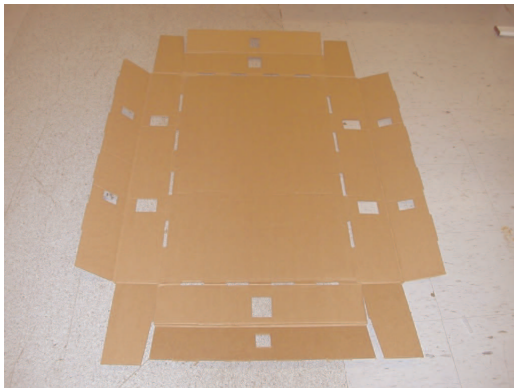
Section 2 - Unit Packaging

2.1 Inspect system to make sure there are no scuffs or scratches on unit.



2.2 Make sure voltage setting is correct.

2.3 Set up Bottom Tray (39Y7483) . (Scan Barcode If Prompted by DFC).



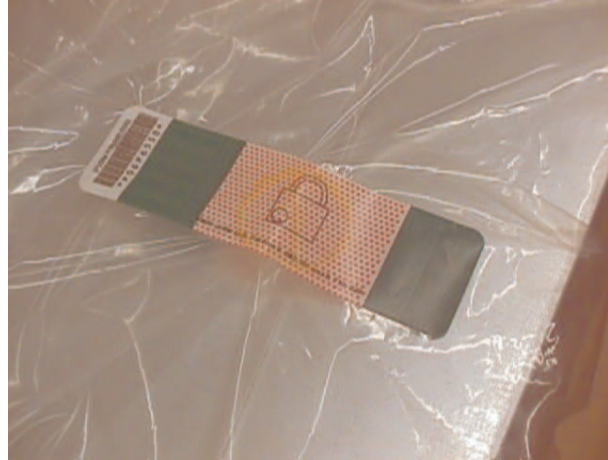
2.4 Place bottom front cushion (39Y7478) and bottom rear cushion (39Y7481) in bottom tray as shown. Leaving about 4 inches of space between the edge of the bottom tray and the edge of the bottom front cushion.



2.5 Place system inside bag (6165640) and place system in bottom cushions. Make sure the system is positioned all the way down and not sitting on the cushion ledge.



2.6 Fold system bag over unit and seal edges of bag closed with Tamper label (06P6550).



2.7 Place carton (39Y7741) around bottom cushions and inside bottom tray (Scan carton barcode if prompted by DFC). Push carton all the way down.



2.8 Place corrugated clip (6X) (37L0511) into square holes in bottom tray and snap shut. Insure that clips go through carton and tray securing carton and tray together.



2.9 Place tamper label (74F8851) over one clip on end of tray.



2.10 Assemble and place shipgroup box (25P1118) inside carton in front of bottom front cushion. Place shipgroup content inside shipgroup box.

Note - The corrugated clip on this end must be in place before the shipgroup is placed in the package .



2.11 Place top rear cushion (39Y7480) and top front cushion (39Y7479) onto system as shown.



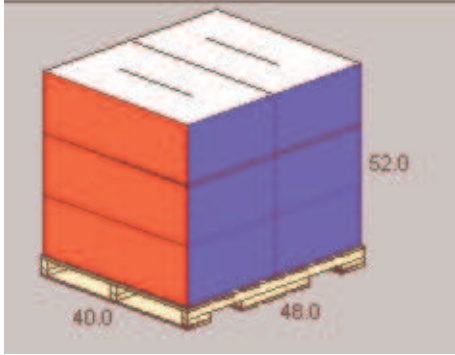
2.12 Close the top of the carton and seal using printed tape (74F5699 - Automatic taper, 74F5698 - for hand held dispensers).



Section 3 - Manufacturing Palletization

Worldwide Sites

3.1.1 - Place up to 6 systems on a full size pallet (6038887) in even quantities.

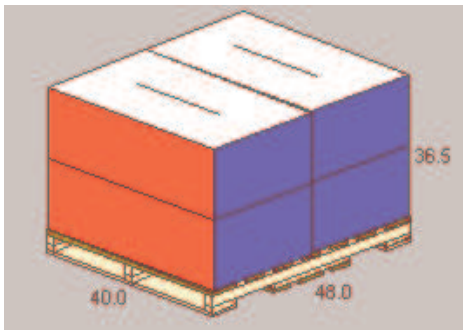


3.1.2 - Secure load to pallet utilizing "Best of Breed" Palletization methods. See 92F6168 - "Best of Breed" Pallet Unitization or QMX document P-04146.

3.1.3 - Place two pallet labels (33G6283) one on the front and one on the left side of the pallet load.

EMEA Site

3.2.1 - Place up to 4 systems on a full size pallet in even quantities.



3.1.2 - Secure load to pallet utilizing "Best of Breed" Palletization methods. See 92F6168 - "Best of Breed" Pallet Unitization or QMX document P-04146.

3.1.3 - Place two pallet labels (33G6283) one on the front and one on the left side of the pallet load.

Section 4 - Distribution

Worldwide Sites

NOTE: All units will be received into Distribution as indicated above in Section 2, Manufacturing Palletization, and are approved to be stacked 4 pallets high.

4.1.1 - Secure load to pallet (or half pallet) utilizing "Best of Breed" Palletization methods. See 92F6168 "Best of Breed" Pallet Unitization or QMX document P-04146.

Use pallet configuration table provided below to determine pallet and empty box usage.

Quantity	Half Pallet	Full Pallet	Empty Box w/ label
1-3	X		
4		X	
5		X	1
6		X	

4.1.2 - Label load for shipment as necessary.

EMEA Site

NOTE: All units will be received into Distribution as indicated above in Section 2, Manufacturing Palletization, and are approved to be stacked 4 pallets high.

4.2.1 - Secure load to pallet (or half pallet) utilizing "Best of Breed" Palletization methods. See 92F6168 "Best of Breed" Pallet Unitization or QMX document P-04146. Use pallet configuration table provided below to determine pallet and empty box usage.

Quantity	Half Pallet	Full Pallet	Empty Box w/ label
1-3	X		
4		X	

4.2.2 - Label load for shipment as necessary

Section 5 - Materials Listing (BOM)

PKG BOM - 39Y7594, COMMON PARTS BOM - 39Y7476

PART NUMBER	DESCRIPTION	QUANTITY/UNIT
33G9780	BLANK LABEL	2
37L0511	CORRUGATED CLIP	6
39Y7478	FRONT BOTTOM CUSHION	1
39Y7479	FRONT TOP CUSHION	1
39Y7480	REAR BOTTOM CUSHION	1
39Y7481	REAR TOP CUSHION	1
39Y7482	SHIP GROUP	1
39Y7483	TRAY	1
39Y7741	HSC	1
6165640	BAG	1
74F8851	TAMPER LABEL	1

PART NUMBER	DESCRIPTION	QUANTITY/UNIT
06P6550	TAMPER LABEL	6
74F5699	IBM TAPE	AS REQUIRED
00K7755	CORNER POST	6
25P1352	PALLET CAP	2
6038887	PALLET	1
7386000	BANDING	AS REQUIRED
7386001	BAND SEAL	2

NOTE: Part numbers for items such as pallets, labels, banding, banding clips, stretchwrap, and corner boards may vary by location .

Records and Controlled Documents

IBM WRM Plan Record Code *	Description of Record / Controlled Document	Location Where record/controlled document is stored	Owner	Total Retention Period*	Disposition *

* See Worldwide Records Management web site at <http://w3.ibm.com/ibm/documents/wrm/>. "N/A should be used if WRM does not list a record code for the record .

References

Document Type	Document Number	Document Name

Document Management

Effective Date	May-31-2006	Review Interval (Maximum Review Interval = 12 months)	12 months
Next Review Date	May-31-2007	Retention Period	24 months

Revision History

Edits to this Revision

5/31/2006 9:09:19 AM - Charles Przybylski/Raleigh/IBM
5/31/2006 8:50:35 AM - Charles Przybylski/Raleigh/IBM
5/16/2006 2:46:50 PM - Vanessa Labare/Raleigh/IBM

Approval Information

Reviewers	William Green/Raleigh/IBM
Approvers	Charles Przybylski/Raleigh/IBM
Select if Approvers will be required to re-enter their password prior to approving or rejecting the document.	N
Users	

Editors

People who can change	Jeffrey Miller/Raleigh/IBM Vanessa Labare/Raleigh/IBM Charles Przybylski/Raleigh/IBM
make changes	[QMXADMIN] Mona M Aakre/Rochester/IBM Diane Mitchell/Rochester/IBM Cheryl Wangsness/Rochester/IBM Dale R Mosher/Poughkeepsie/IBM Diane Gonsalves/San Jose/IBM Dale Stuemke/Austin/Contr/IBM Victoria Cyr/Poughkeepsie/IBM Margaret Brinkel/Morrisville/IBM Daniel G Demer/Tucson/IBM Carmen Clark/West Palm Beach/IBM
Access restricted to	

History Log

Date Created	May-16-2006	Vanessa Labare/Raleigh/IBM
Date Draft Complete		
Date Review Complete	May-31-2006	Charles Przybylski/Raleigh/IBM
Date Approved	May-31-2006	Automatic System
Date Distributed	May-31-2006	
Date Obsolete Requested		
Date Obsolete		
Date Withdrawn		

© 2006 IBM Corporation, All Rights Reserved Worldwide
WW SG Document Library Control / D01DB034 / q_dir\qmx\serv\qrodic .nsf

End of Document