

65W Ultraportable AC Adapter



User's Guide

Attention: Before installing this product, read the Safety Booklet.

Note: Before using this information and the product it supports, read the information in Appendix A, "Service and Support," on page A-1, Appendix B, "Warranty information," on page B-1 and Appendix C, "Notices," on page C-1.

First Edition (November 2005)

© Copyright Lenovo 2005.

Portions © Copyright International Business Machines Corporation 2005.

All rights reserved.

U.S. GOVERNMENT USERS – RESTRICTED RIGHTS: Our products and/or services are provided with RESTRICTED RIGHTS. Use, duplication or disclosure by the Government is subject to the GSA ADP Schedule contract with Lenovo Group Limited, if any, or the standard terms of this commercial license, or if the agency is unable to accept this Program under these terms, then we provide this Program under the provisions set forth in Commercial Computer Software–Restricted Rights at FAR 52.227-19, when applicable, or under Rights in Data-General, FAR 52.227.14 (Alternate III).

Contents

Safety information	v
General safety guidelines	vii
Service	vii
Power cords and power adapters	vii
Extension cords and related devices	viii
Plugs and outlets	viii
Batteries	ix
Heat and product ventilation	ix
CD and DVD drive safety	x
About the 65W Ultraportable AC Adapter	1-1
Registering your option	1-1
Supported computers	1-1
Connecting the AC adapter	1-2
Appendix A. Service and Support	A-1
Online technical support	A-1
Telephone technical support	A-1
Appendix B. Warranty information	B-1
Worldwide telephone list	B-16
Guarantee supplement for Mexico	B-19
Appendix C. Notices	C-1
Important information for the European Directive 2002/96/EC.	C-2
Appendix D. Electronic emission notices	D-1
Federal Communications Commission (FCC) Declaration of Conformity	D-1
Appendix E. Trademarks	E-1

Safety information

Before installing this product, read the Safety Information.

مج، يجب قراءة دات السلامة

Antes de instalar este produto, leia as Informações de Segurança.

在安装本产品之前，请仔细阅读 **Safety Information**
(安全信息)。

Prije instalacije ovog produkta obavezno pročitajte Sigurnosne Upute.

Před instalací tohoto produktu si přečtete příručku bezpečnostních instrukcí.

Læs sikkerhedsforskrifterne, før du installerer dette produkt.

Ennen kuin asennat tämän tuotteen, lue turvaohjeet kohdasta Safety Information.

Avant d'installer ce produit, lisez les consignes de sécurité.

Vor der Installation dieses Produkts die Sicherheitshinweise lesen.

Πριν εγκαταστήσετε το προϊόν αυτό, διαβάστε τις πληροφορίες ασφάλειας (safety information).

לפני שתתקינו מוצר זה, קראו את הוראות הבטיחות.

A termék telepítése előtt olvassa el a Biztonsági előírásokat!

Prima di installare questo prodotto, leggere le Informazioni sulla Sicurezza.

製品の設置の前に、安全情報をお読みください。

본 제품을 설치하기 전에 안전 정보를 읽으십시오.

Пред да се инсталира овој продукт, прочитајте информацијата за безбедност.

Lees voordat u dit product installeert eerst de veiligheidsvoorschriften.

Les sikkerhetsinformasjonen (Safety Information) før du installerer dette produktet.

Przed zainstalowaniem tego produktu, należy zapoznać się z książką "Informacje dotyczące bezpieczeństwa" (Safety Information).

Antes de instalar este produto, leia as Informações sobre Segurança.

Перед установкой продукта прочтите инструкции по технике безопасности.

Pred inštaláciou tohto produktu si prečítajte bezpečnostné informácie.

Pred namestitvijo tega proizvoda preberite Varnostne informacije.

Antes de instalar este producto lea la información de seguridad.

Läs säkerhetsinformationen innan du installerar den här produkten.

安裝本產品之前，請先閱讀「安全資訊」。

General safety guidelines

Always observe the following precautions to reduce the risk of injury and property damage.

Service

Do not attempt to service a product yourself unless instructed to do so by the Customer Support Center. Use only a service provider who is approved to repair your particular product.

Note: Some parts can be upgraded or replaced by the customer. These parts are referred to as Customer Replaceable Units, or CRUs. Lenovo expressly identifies CRUs as such, and provides documentation with instructions when it is appropriate for customers to replace those parts. You must closely follow all instructions when performing such replacements. Always make sure that the power is turned off and that the product is unplugged from any power source before you attempt the replacement. If you have any questions or concerns, contact the Customer Support Center.

Power cords and power adapters

Use only the power cords and power adapters supplied by the product manufacturer.

Never wrap a power cord around the power adapter or other object. Doing so can stress the cord in ways that can cause the cord to fray, crack or crimp. This can present a safety hazard.

Always route power cords so that they will not be walked on, tripped over, or pinched by objects.

Protect the cord and power adapters from liquids. For instance, do not leave your cord or power adapter near sinks, tubs, toilets, or on floors that are cleaned with liquid cleansers. Liquids can cause a short circuit, particularly if the cord or power adapter has been stressed by misuse. Liquids can also cause gradual corrosion of the power cord terminals and/or the connector terminals on the adapter which can eventually result in overheating.

Always connect power cords and signal cables in the correct order and ensure that all power cord connectors are securely and completely plugged into receptacles.

Do not use any power adapter that shows corrosion at the ac input pins and/or shows signs of overheating (such as deformed plastic) at the ac input or anywhere on the power adapter.

Do not use any power cords where the electrical contacts on either end show signs of corrosion or overheating or where the power cord appears to have been damaged in any way.

Extension cords and related devices

Ensure that extension cords, surge protectors, uninterruptible power supplies, and power strips that you use are rated to handle the electrical requirements of the product. Never overload these devices. If power strips are used, the load should not exceed the power strip input rating. Consult an electrician for more information if you have questions about power loads, power requirements, and input ratings.

Plugs and outlets

If a receptacle (power outlet) that you intend to use with your computer equipment appears to be damaged or corroded, do not use the outlet until it is replaced by a qualified electrician.

Do not bend or modify the plug. If the plug is damaged, contact the manufacturer to obtain a replacement.

Some products are equipped with a three-pronged plug. This plug fits only into a grounded electrical outlet. This is a safety feature. Do not defeat this safety feature by trying to insert it into a non-grounded outlet. If you cannot insert the plug into the outlet, contact an electrician for an approved outlet adapter or to replace the outlet with one that enables this safety feature. Never overload an electrical outlet. The overall system load should not exceed 80 percent of the branch circuit rating. Consult an electrician for more information if you have questions about power loads and branch circuit ratings.

Be sure that the power outlet you are using is properly wired, easily accessible, and located close to the equipment. Do not fully extend power cords in a way that will stress the cords.

Connect and disconnect the equipment from the electrical outlet carefully

Batteries

All personal computers manufactured by Lenovo contain a non-rechargeable coin cell battery to provide power to the system clock. In addition many mobile products such as notebook PCs utilize a rechargeable battery pack to provide system power when in portable mode. Batteries supplied by Lenovo for use with your product have been tested for compatibility and should only be replaced with Lenovo approved parts.

Never attempt to open or service any battery. Do not crush, puncture, or incinerate batteries or short circuit the metal contacts. Do not expose the battery to water or other liquids. Only recharge the battery pack strictly according to instructions included in the product documentation.

Battery abuse or mishandling can cause the battery to overheat, which can cause gasses or flame to “vent” from the battery pack or coin cell. If your battery is damaged, or if you notice any discharge from your battery or the buildup of foreign materials on the battery leads, stop using the battery and obtain a replacement from the battery manufacturer.

Batteries can degrade when they are left unused for long periods of time. For some rechargeable batteries (particularly Lithium Ion batteries), leaving a battery unused in a discharged state could increase the risk of a battery short circuit, which could shorten the life of the battery and can also pose a safety hazard. Do not let rechargeable Lithium-Ion batteries completely discharge or store these batteries in a discharged state.

Heat and product ventilation

Computers generate heat when turned on and when batteries are charging. Notebook PCs can generate a significant amount of heat due to their compact size. Always follow these basic precautions:

- Do not leave the base of your computer in contact with your lap or any part of your body for an extended period when the computer is functioning or when the battery is charging. Your computer produces some heat during normal operation. Extended contact with the body could cause discomfort or, potentially, a skin burn.
- Do not operate your computer or charge the battery near flammable materials or in explosive environments.
- Ventilation slots, fans and/or heat sinks are provided with the product for safety, comfort, and reliable operation. These features might inadvertently become blocked by placing the product on a bed, sofa, carpet, or other flexible surface. Never block, cover or disable these features.

CD and DVD drive safety

CD and DVD drives spin discs at a high speed. If a CD or DVD is cracked or otherwise physically damaged, it is possible for the disc to break apart or even shatter when the CD drive is in use. To protect against possible injury due to this situation, and to reduce the risk of damage to your machine, do the following:

- Always store CD/DVD discs in their original packaging
- Always store CD/DVD discs out of direct sunlight and away from direct heat sources
- Remove CD/DVD discs from the computer when not in use
- Do not bend or flex CD/DVD discs, or force them into the computer or their packaging
- Check CD/DVD discs for cracks before each use. Do not use cracked or damaged discs

About the 65W Ultraportable AC Adapter

Thank you for purchasing the 65W Ultraportable AC Adapter (hereafter called the *ac adapter option*). The ac adapter option supplies power for the computer, and also charges the battery pack installed in the computer.

This option package includes the following components:

- 65W Ultraportable AC Adapter
- *65W Ultraportable AC Adapter User's Guide*

Registering your option

Thank you for purchasing this Lenovo™ product. Please take a few moments to register your product and provide us with information that will help Lenovo to better serve you in the future. Your feedback is valuable to us in developing products and services that are important to you, as well as in developing better ways to communicate with you. Register your option on the following Web site:

<http://www.lenovo.com/register/>

Lenovo will send you information and updates on your registered product unless you indicate on the Web site questionnaire that you do not want to receive further information.

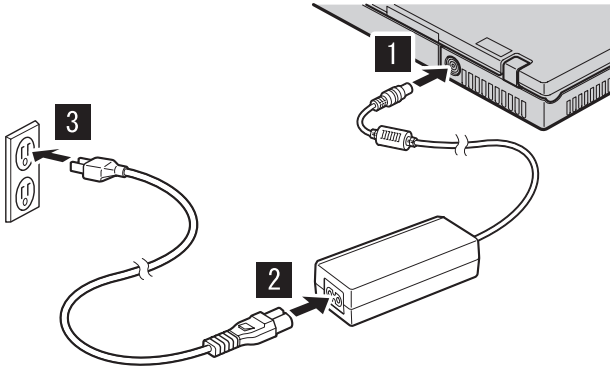
Supported computers

The ac adapter option you have just purchased does not support some of the computers made for Lenovo that have already been shipped to customers. Before using the ac adapter, make sure it supports your computer.

Connecting the AC adapter

When you use the ac adapter option, connect it to your computer as shown.

Note: The illustration in this publication might not look exactly like your computer.



Sobre o Adaptador de Corrente Alternada Ultraportátil de 65W

Obrigado por adquirir o Adaptador de Corrente Alternada Ultraportátil de 65W (doravante chamado de *adaptador de corrente alternada opcional*). O adaptador de corrente alternada opcional fornece energia para o computador, além disso, carrega o pacote de bateria instalado no mesmo.

Esse pacote de opcionais inclui os componentes a seguir:

- Adaptador de Corrente Alternada Ultraportátil de 65W
- *Adaptador de Corrente Alternada Ultraportátil de 65W: Guia do Usuário*

Registrando o Opcional

Obrigado por adquirir este produto Lenovo™. Reserve alguns minutos para registrar seu produto e fornecer informações que ajudarão a Lenovo a melhorar seus serviços. É importante que você forneça-nos feedback para que possamos desenvolver produtos e serviços úteis a você, melhorando assim a nossa comunicação. Registre o opcional no seguinte Web site:

<http://www.lenovo.com/register/>

A Lenovo enviará informações e atualizações para o produto registrado, a menos que você indique no questionário do Web site que não deseja recebê-las.

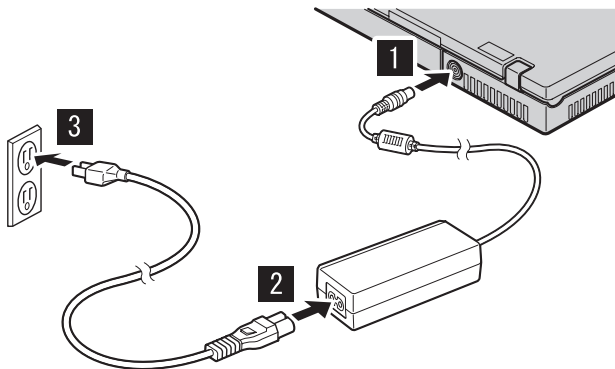
Computadores Suportados

O adaptador de corrente alternada opcional que você acabou de adquirir não suporta alguns dos computadores feitos para a Lenovo que já foram enviados aos clientes. Antes de utilizar o adaptador de corrente alternada, certifique-se de que ele suporta o seu computador.

Conectando o Adaptador de Corrente Alternada

Ao utilizar o adaptador de corrente alternada opcional, conecte-o ao computador, conforme mostrado a seguir.

Nota: A ilustração nesta publicação pode não ser exatamente igual ao seu computador.



A propos du boîtier d'alimentation 65 W Ultraportable

Merci d'avoir acheté le boîtier d'alimentation 65 W Ultraportable (appelé ci-après *boîtier d'alimentation*). Le boîtier d'alimentation fournit non seulement l'alimentation nécessaire à l'ordinateur mais permet également de charger le bloc de batteries qui y est installé.

Cette option se compose des éléments suivants :

- boîtier d'alimentation 65 W Ultraportable
- *Guide d'utilisation du boîtier d'alimentation 65 W Ultraportable*

Enregistrement de votre produit

Nous vous remercions pour votre achat d'un produit Lenovo. Prenez quelques instants pour enregistrer votre produit et nous fournir les informations qui permettront à Lenovo de mieux vous servir. Vos commentaires nous sont précieux pour le développement de produits et de services qui sont importants pour vous, ainsi que pour améliorer notre communication avec vous. Enregistrez votre option sur le site Web suivant :

<http://www.lenovo.com/register/>

Lenovo vous communiquera les informations et les mises à jour concernant votre produit enregistré, à moins que vous ne répondiez au questionnaire fourni sur le site Web que vous ne souhaitez pas recevoir d'informations supplémentaires.

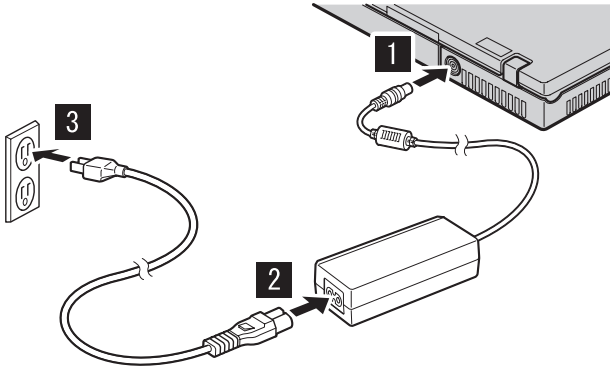
Ordinateurs pris en charge

L'option dont vous venez de faire l'acquisition n'est pas compatible avec certains ordinateurs Lenovo déjà livrés aux clients. Avant d'utiliser ce boîtier d'alimentation, assurez-vous qu'il est compatible avec votre ordinateur.

Connexion du boîtier d'alimentation

Connectez le boîtier d'alimentation à votre ordinateur comme indiqué ci-après.

Remarque : L'illustration peut ne pas représenter exactement la partie arrière votre ordinateur.



Produktinformationen zum 65W Ultraportable AC Adapter

Vielen Dank, dass Sie sich für den Kauf des 65W Ultraportable AC Adapters (nachfolgend *Netzteil* genannt) entschieden haben. Das Netzteil versorgt den Computer mit Netzstrom und lädt auch den Akkusatz auf, der sich im Computer befindet.

Dieses Zusatzpaket enthält Folgendes:

- 65W Ultraportable AC Adapter
- *65W Ultraportable AC Adapter Benutzerhandbuch*

Zusatzeinrichtung registrieren

Vielen Dank, dass Sie sich für dieses Lenovo™ Produkt entschieden haben. Bitte nehmen Sie sich einige Minuten Zeit, um Ihr Produkt zu registrieren und uns einige Informationen zur Verfügung zu stellen, anhand derer wir Ihnen künftig einen noch besseren Service bieten können. Ihr Feedback ist für uns hilfreich bei der Entwicklung wichtiger Produkte und Services für Sie sowie auch bei der Entwicklung besserer Kommunikationsmöglichkeiten mit Ihnen. Registrieren Sie Ihre Zusatzeinrichtung auf der folgenden Website:

<http://www.lenovo.com/register/>

Lenovo sendet Ihnen Informationen und Aktualisierungen zu Ihrem registrierten Produkt, es sei denn, Sie haben auf dem Fragebogen auf der Website angegeben, dass Sie keine weiteren Informationen erhalten möchten.

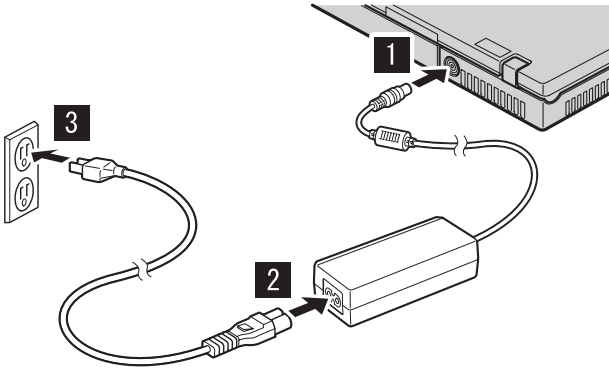
Unterstützte Computer

Das von Ihnen erworbene Netzteil unterstützt einige der Lenovo Computer nicht, die bereits an die Kunden ausgeliefert wurden. Stellen Sie vor der Verwendung des Netzteils sicher, dass dieses von Ihrem Computer unterstützt wird.

Netzteil anschließen

Wenn Sie das Netzteil verwenden, schließen Sie es wie in der Abbildung dargestellt an Ihren Computer an.

Anmerkung: Die Abbildung des Netzteils in dieser Veröffentlichung weicht möglicherweise geringfügig vom tatsächlich vorhandenen Netzteil ab.



Informazioni sull'Adattatore CA 65W Ultraportable

Grazie per aver scelto l'Adattatore CA 65W Ultraportable (in seguito chiamato *opzione adattatore ca*). L'adattatore ca fornisce l'alimentazione per il computer e carica inoltre la batteria installata sul computer.

Questa opzione include i seguenti componenti:

- Adattatore CA 65W Ultraportable
- *Guida per l'utente dell'Adattatore CA 65W Ultraportable*

Registrazione delle opzioni

Grazie per aver scelto questo prodotto Lenovo™. Effettuare la registrazione del prodotto e fornire le informazioni per rendere migliore l'assistenza in futuro. La collaborazione è importante per lo sviluppo dei prodotti e dei servizi, oltre allo sviluppo delle comunicazioni. Registrare l'opzione sul seguente sito Web

<http://www.lenovo.com/register/>

Lenovo invierà le informazioni e gli aggiornamenti relativi al prodotto registrato a meno che non venga indicato nel questionario del sito Web che non si desidera ricevere ulteriori informazioni.

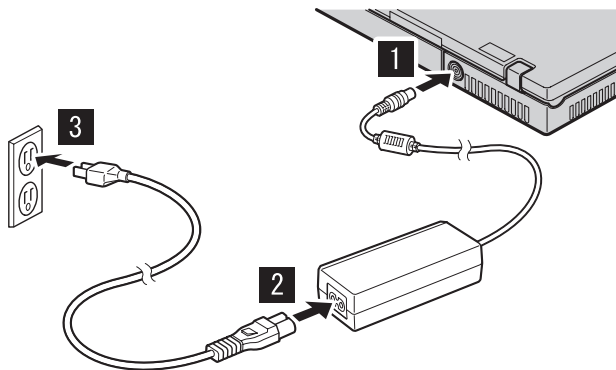
Computer supportati

L'opzione adattatore ca appena acquistato non supporta alcuni dei computer della Lenovo che sono già stati spediti ai clienti. Prima di utilizzare l'adattatore ca, assicurarsi che supporti il computer.

Collegamento all'adattatore CA

Quando si utilizza l'adattatore ca collegarlo al computer come mostrato.

Nota: L'illustrazione in questa pubblicazione potrebbe non apparire esattamente come il proprio computer.



Acerca del Adaptador de CA ultraportátil de 65W

Gracias por adquirir el Adaptador de CA ultraportátil de 65W (denominado, a partir de ahora *opción de adaptador de CA*). La opción de adaptador de CA proporciona alimentación al sistema y carga el paquete de la batería que está instalado en el sistema.

Este paquete de opciones incluye los componentes siguientes:

- Adaptador de CA ultraportátil de 65W
- *Guía del usuario del Adaptador de CA ultraportátil de 65W*

Cómo registrar la opción

Gracias por adquirir este producto de Lenovo. Tómese unos minutos para registrar su producto y facilitarnos información que ayudará a Lenovo a servirle mejor en el futuro. Esta información es valiosa para desarrollar productos y servicios importantes para usted, así como para desarrollar métodos mejores de comunicación con usted. Registre su opción en el sitio Web siguiente:

<http://www.lenovo.com/register/>

Lenovo le enviará información y actualizaciones de su producto registrado a menos que indique que no desea recibir más información, en el cuestionario del sitio Web.

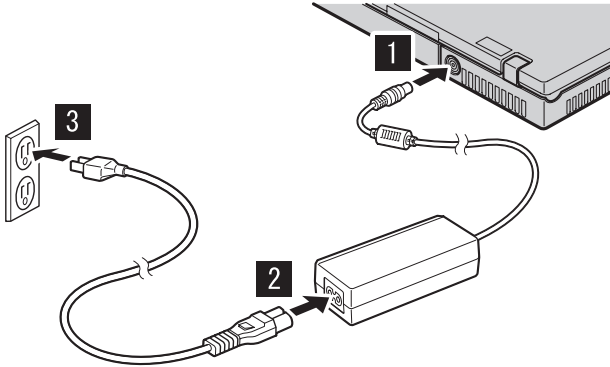
Sistemas soportados

La opción de adaptador de CA que ha adquirido no es compatible con algunos sistemas realizados para Lenovo que ya se han enviado a los clientes. Antes de utilizar el adaptador de CA, asegúrese de que es compatible con el sistema.

Conexión del adaptador de CA

Cuando utilice la opción de adaptador de CA conéctelo a su sistema tal y como se muestra.

Nota: Puede que la ilustración de esta publicación no refleje exactamente su sistema.



Napájecí zdroj 65W Ultraportable AC

Děkujeme vám za zakoupení napájecího zdroje 65W Ultraportable AC (dále nazývaného *napájecí zdroj*). Napájecí zdroj poskytuje proud pro počítač a také nabíjí baterii instalovanou v počítači.

Součástí dodávky jsou následující položky:

- 65W Ultraportable AC Adapter
- *Uživatelská příručka napájecího zdroje 65W Ultraportable AC*

Registrace produktu

Děkujeme vám za zakoupení produktu Lenovo™. Zaregistrujte si prosím zakoupený produkt a poskytněte údaje, díky kterým vám Lenovo bude moci poskytovat lepší služby. Zpětná vazba je důležitá pro vývoj produktů a služeb. Díky ní se nejen dovídáme, jaké produkty a služby očekáváte, ale také nacházíme nové, efektivnější způsoby komunikace. Produkt zaregistrujte na webové stránce:

<http://www.lenovo.com/register/>

Pokud ve formuláři na webové stránce neuvedete, že nechcete dostávat další informace, Lenovo vám bude posílat informace a aktualizace k registrovanému produktu.

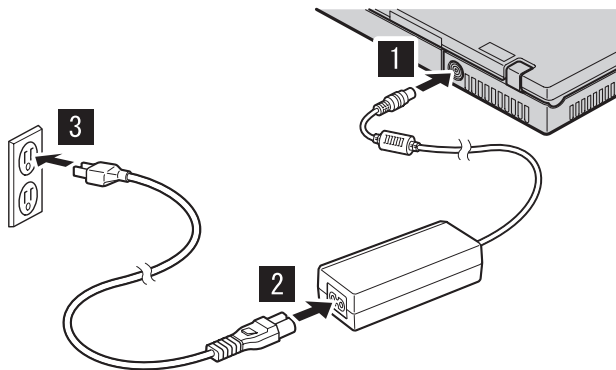
Podporované počítače

Napájecí zdroj, který jste si pořídili, nepodporuje některé počítače Lenovo, které již byly dodány zákazníkům. Před použitím napájecího zdroje ověřte, zda podporuje váš počítač.

Připojení napájecího zdroje

Napájecí zdroj připojte k počítači podle obrázku.

Poznámka: Ilustrace v publikaci a počítač se mohou trochu lišit.



Informácie o produkte 65W Ultraportable AC Adapter

Ďakujeme, že ste si kúpili produkt 65W Ultraportable AC Adapter (ďalej nazývaný *napájací adaptér*). Napájací adaptér slúži na dodávanie elektrickej energie počítaču, a tiež na nabíjanie batérie počítača.

Balenie produktu obsahuje tieto položky:

- 65W Ultraportable AC Adapter
- *Užívateľskú príručku produktu 65W Ultraportable AC Adapter*

Registrácia vášho produktu

Ďakujeme, že ste si zakúpili tento produkt spoločnosti Lenovo™. Venujte pár minút registrácii svojho produktu a pošlite nám informácie, ktoré v budúcnosti pomôžu spoločnosti Lenovo pri poskytovaní lepších služieb. Vaše odpovede budú nápomocné pri vývoji produktov a služieb, ktoré sú pre vás dôležité, ako aj pri vývoji lepších spôsobov našej komunikácie s vami. Svoj produkt si zaregistrujte na tejto webovej stránke:

<http://www.lenovo.com/register/>

Spoločnosť Lenovo vám bude posilať informácie a aktualizácie o vašom zaregistrovanom produkte, pokiaľ v dotazníku na tejto webovej stránke neuviedete, že si tieto informácie neželáte dostávať.

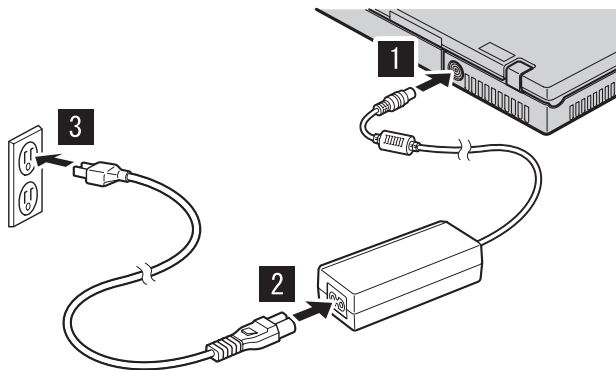
Podporované počítače

Napájací adaptér, ktorý ste si práve kúpili, nie je podporovaný niektorými počítačmi Lenovo, ktoré už boli dodané zákazníkom. Pred použitím napájacieho adaptéra sa uistite, či ho váš počítač podporuje.

Pripojenie napájacieho adaptéra

Keď chcete použiť napájací adaptér, pripojte ho k počítaču podľa nasledujúceho obrázka.

Poznámka: Ilustrácia v tejto príručke nemusí byť presne totožná s vaším počítačom.



Bölüm 1. 65W Ultraportable AC Adapter Hakkında

65W Ultraportable AC Adapter ürününü (bundan sonra *AC bağdaştırıcısı aksamı* olarak anılacaktır) satın aldığımız için teşekkür ederiz. AC bağdaştırıcısı aksamı bilgisayara güç sağlar ve bilgisayara takılı pilleri de doldurur.

Bu aksam paketi aşağıdaki bileşenleri içerir:

- 65W Ultraportable AC Adapter
- *65W Ultraportable AC Adapter Kullanıcı Kılavuzu*

Aksamanızın kaydedilmesi

Bu Lenovo™ ürününü aldığınız için teşekkür ederiz. Lenovo'dan gelecekte daha iyi hizmet alabilmeniz için ürününüzü kaydetmek ve gerekli bilgileri vermek üzere lütfen birkaç dakikanızı ayırın. Görüşleriniz yeni ürünler ve hizmetler geliştirmenin yanı sıra, sizinle daha iyi iletişim kurmamızı sağladığından bizim için değerlidir. Aksamınızı şu adresteki Web sitesine kaydedin:

<http://www.lenovo.com/register/>

Web sitesi anketinde ürünle ilgili daha fazla bilgi almak istemediğinizi belirtmediğiniz takdirde, Lenovo size kaydedilen ürününüzle ilgili bilgi ve güncellemeler gönderecektir.

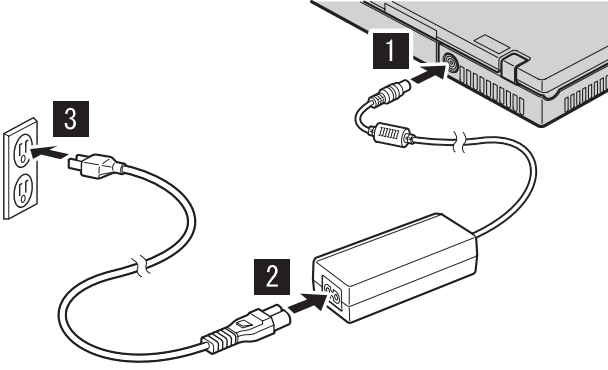
Desteklenen bilgisayarlar

Satın aldığımız AC bağdaştırıcısı aksamı, müşterilere gönderilmiş olan Lenovo için üretilmiş bazı bilgisayarları desteklemez. AC bağdaştırıcısını kullanmadan önce bilgisayarınızı desteklediğinden emin olun.

AC Baędařtırıcısının Baęlanması

AC baędařtırıcısı aksamını kullanırken ařaęıda gsterildięi biimde bilgisayarınıza baęlayın.

Not: Bu yayındaki Őekil, bilgisayarınızla aynı olmayabilir.



Bölüm 2. Ek Bilgiler

For Turkey Only (Yalnızca Türkiye İçin)

1. İmalatçı ya da ithalatçı firmaya ilişkin bilgiler:

Ürünün ithalatçı firması, Lenovo Technology B.V. Merkezi Hollanda Türkiye İstanbul Şubesi'dir. Adresi ve telefonu şöyledir:

Büyükdere Caddesi Yapı Kredi Plaza B Blok

Kat: 15-A, Levent, Beşiktaş

34330, İstanbul, Türkiye

Tel: 90 212 317 15 00

2. Bakım, onarım ve kullanımda uyulması gereken kurallar:

Elektronik cihazlar için gösterilmesi gereken standart özeni göstermeniz yeterlidir. Cihaz çalışır durumda iken temizlik yapmayınız. Islak bezle, köpürtülmüş deterjanlarla, sulu süngerlerle temizlik yapmayınız. Son kullanıcılar onarım konusunda yetkili değildir. Arıza söz konusu olduğuna inanıyorsanız telefonla danışabilir ya da ürünü bu kitapta yer alan servis istasyonlarından birine götürebilirsiniz.

3. Taşıma ve nakliye sırasında dikkat edilecek hususlar:

Ürününüzü ve bağlı olduğu aygıtı taşırken ya da nakliye sırasında dikkat etmeniz gereken birkaç nokta vardır. Aygıtı taşımadan önce tüm bağlı ortamların çıkartılmış olması, bağlı aygıtların çözülmesi ve kabloların sökülmüş olması gerekir. Bu aygıtın zarar görmemesi için gereklidir. Ayrıca aygıtınızı taşırken uygun koruma sağlayan bir taşıma kutusu kullanılmasına dikkat edin. Bakıma ilişkin diğer ek bilgiler için kitabın ilgili bölümünden (eğer sağlanmışsa) yararlanabilirsiniz.

4. Aygıtı ilişkin bakım, onarım ya da temizliğe ilişkin bilgiler:

Aygıtı ilişkin kullanıcının yapabileceği bir bakım ya da onarım yoktur. Bakım ya da onarıma gereksinim duyarsanız bir Çözüm Ortağı'ndan destek alabilirsiniz. Ayrıca servis istasyonlarına ilişkin bilgileri kitabınızın eklerinde bulabilirsiniz.

5. Kullanım sırasında insan ya da çevre sağlığına zararlı olabilecek durumlar:

Bu tür durumlar söz konusu olduğunda ürüne özel olarak bu kitabın ilgili bölümünde detaylı olarak ele alınmıştır. Kitabınızda bu tür bir uyarı yoksa, kullanmakta olduğunuz ürün için böyle bir durum söz konusu değildir.

6. Kullanım hatalarına ilişkin bilgiler:

Burada belirtilenler ile sınırlı olmamak kaydı ile bu bölümde bazı kullanıcı hatalarına ilişkin örnekler sunulmuştur. Bu ve benzeri konulara özen göstermeniz yeterlidir. Kılavuz içinde daha ayrıntılı bilgiler verilebilir.

Örnekler:

Kabloların zorla ait olmadıkları yuvalara takılması

Kumanda butonlarına gereğinden yüksek kuvvet uygulanması

Aleti çalışır durumda taşımak, temizlemek vb. eylemler

Alet üzerine katı ya da sıvı gıda maddesi dökülmesi

Aletin taşıma sırasında korunmaması ve darbe alması

7. Ürünün özelliklerine ilişkin tanıtıcı ve temel bilgiler:

Ürünüze ilişkin tanıtıcı ve temel bilgileri kitabınızın ilgili bölümlerinde bulabilirsiniz.

8. Periyodik bakıma ilişkin bilgiler:

Ürün bir uzmanın yapması gereken periyodik bakımı içermez.

9. Bağlantı ve montaja ilişkin bilgiler:

Aksamınızı çalışır hale getirebilmeniz için gerekli bağlantı ve montaj bilgileri bu kılavuzda yer almaktadır. Kuruluş işlemini kendiniz yapmak istemiyorsanız satıcınızdan ya da bir Servis İstasyonu'ndan ücret karşılığında destek alabilirsiniz.

10. Bakanlıkça tespit ve ilan edilen kullanım ömrü:

Bakanlıkça tespit ve ilan edilen kullanım ömrü 7 yıldır.

11. Varsa standart numarası:

Ürünün standart numarası yoktur.

12. Servis istasyonlarına ilişkin bilgiler:

Bunlar kitabımızın aynı başlıklı bölümünde belirtilmiştir. Herhangi bir onarım ya da yedek parça ihtiyacı durumunda bu istasyonlardan birine başvurabilirsiniz.

13. İthal edilmiş mallarda, yurt dışındaki üretici firmanın unvanı ve açık adresi ile diğer erişim bilgileri (telefon, telefaks ve e-posta vb.):

Lenovo (ABD) Inc.

One Manhattanville Road

Purchase, New York 10577

Telefon: (919) 245-0532

A.B.D.

14. "CE" işareti (varsa) ve uygunluk değerlendirme kuruluşunun unvanı ve açık adresi ile diğer erişim bilgileri (telefon, telefaks ve e-posta vb.):

Lenovo (Japan) Ltd.

1623-14, Shimotsuruma, Yamato-Shi

Kanagawa 242-8502

Japonya

Servis istasyonlarına ilişkin bilgiler:

Şirket adı	Adres	Posta kodu	Şehir	Telefon	Faks
ESD Bilgisayar San. ve Tic. Ltd. Şti.	Cemilpaşa Mahallesi, 7. Sokak, İl. Beşiri Göksel Apartmanı, Zemin Katı, Seyhan		Adana	322 456 25 10	322 456 47 83
İnterScan Sistem ve Bilgisayar Teknolojileri A.Ş.	Öğütür Mahallesi 34. Sokak No:14, Bağlat	06520	Ankara	312 295 21 28	312 295 21 20
Arion Bilgi Sistemleri Tic. A.Ş.	Heriye Sokak, No:82, Çamçaya	06700	Ankara	312 447 13 95	312 447 59 36
Destek Bilgisayar ve İletişim Hizmetleri Tic. A.Ş.	Cinnah Caddesi, No:51/4, Çamçaya	06680	Ankara	312 442 19 21	312 441 97 89
Probi Bilgi İşlem Destek ve Dan.Şan. ve Tic. A. Ş.	Teknobi Geleceğine Bölgesi, ÖDÜT Ofis Bina, Bani Cephe A-1, Odlu	06531	Ankara	312 210 18 05	312 210 18 05
Bilser Bilgi İşlem Tic. Ltd. Şti.	Güllük Caddesi, 148.Sokak, Gökhan Apartmanı, No:13/6.7	07500	Anıyaka	242 247 75 28	242 241 11 68
Ercişoşun Bilgisayar Yaz.Don.ve Dan.Hiz.Ltd.Şti.	Tabaklar Mahallesi, Cumhuriyet Caddesi, No:35	14200	Bolu	374 212 58 46	374 212 10 88
Monitor Digital Bilgisayar Ltd. Şti.	Mudanya Yolu, Şehit Mümm. Nuhlu Sokak, No:2	16160	Bursa	224 242 43 10	224 242 40 22
ALM Bilgisayar San.Tic.Ltd.Şti.	2. Tıcan Yolu, Kazım Kaya Sokak, No:65 Kat:3	20100	Denizli	258 264 28 55	258 265 74 77
Netro Bilgisayar Eğitim Tic. ve San.Ltd. Şti.	Ali Emiri 5. Sokak, Kapmaz Apartmanı, No:4/1	21100	Diyarbakır	412 223 94 36	422 224 55 07
Erzincan Bilgisayar	Hükümet Caddesi, No:33/1		Erzincan	446 223 89 87	446 224 24 34
Sank Bilgisayar Elektronik San. ve Tic. Ltd. Şti	Yükleri Mumcu Cad no 9		Erzurum	442 234 21 02	442 218 21 07
Eğitim Tanıtım ve Müşavirlik A.Ş. (EFAM)	Kızılçeki Mahmut Bekirhan Caddesi, Abacı Apartmanı, No:34	26020	Erzincan	222 220 50 55	223 221 69 91
Kalender Bilgisayar İnşaat Tesatli San. ve Tic. Ltd. Şti	Gazımuharapaş Buvanı No:23 Gaziantep	27080	Gaziantep	342 215 18 18	342 215 18 22
Eno Elektronik ve Bilgisayar Sistemleri (İnan Akyol)	Alatürk Caddesi, No:281	76000	İğır	476 227 76 66	476 227 78 66
Destek Bilgisayar ve İletişim Hizmetleri Tic. A.Ş.	Çınar Sokak, No:17, 4. Levant	80620	İstanbul	212 282 44 30	212 284 46 45
Probi Bilgi İşlem Destek ve Dan.Şan. ve Tic. A. Ş.	Eski Büyükdere Caddesi, Diyar Sokak, No:4 Otlasanı, 4. Levant	80660	İstanbul	212 317 61 00	212 325 42 04
Probi Bilgi İşlem Destek ve Dan.Şan. ve Tic. A. Ş.	Emniyet Evleri Mah. Yemingen Sok. Emir Han, K:2 No:6, 4. Levant	34416	İstanbul	212 324 60 10	212 284 52 40
Delta Bilgisayar Hizmetleri Ltd. Şti.	Vatan Cad. Ortadoğu İş Merkezi 2/1, Çalğlayan		İstanbul	212 296 47 00	212 296 47 06
Turkuaz Bilgisayar Danışmanlık ve Yazılım Ltd. Şti.	Doğanbey Caddesi, Çetinay Sokak, No:2, Kat:5, İperentöky	81120	İstanbul	216 575 58 32	216 575 01 08
Neberris Bilgisayar Sistemleri San. ve Tic. Ltd. Şti.	İnönü Mahallesi,Alpaya Caddesi, Umıt İş Merkezi, No:49, Kayışdağı, Kadıköy	34755	İstanbul	216 576 82 04	216 576 74 49
Pertus Bilgisayar Sist. Dağ Tic.San.Ltd.Şti.	Zirvebey Eğitim Mahallesi, Poyraz Sokak, Saadkoğlu İş Merkezi 1, D:15 Zirvebey, Kadıköy	81040	İstanbul	216 545 08 00	216 349 09 92
Bilgi Birlikim Sistemleri Elektr. ve Bilg. Endüstrisi İltih. Hiz Ltd. Şti.	Kocayol Caddesi, Kozvatağı Sokak, No: 3/B Kat:3, Kozvatağı		İstanbul	216 373 98 00	216 373 99 93
Koc Sistem Bilgi İletişim Hizmetleri A.Ş.	Aydınevler Mahallesi Dumlupınar Caddesi No:24, Küçüyalı	34840	İstanbul	216 556 11 00	216 556 11 88
Novatek Bilgisayar Sistemleri San.ve Tic.Ltd.Şti.	Rasit Rıza Sokak, Yıldırım İş Hanı, No: 1 Kat: 1, Mecidiyeköy	80300	İstanbul	212 356 75 77	212 356 75 88
Probi Bilgi İşlem Destek ve Dan.Şan. ve Tic. A. Ş.	Sarı Esref Bulvarı, Huzur İshani, No:272 Kat:2, Alsancağ	35210	İzmir	232 445 33 33	232 441 40 40
Adapa Bilgi Sistemleri A.Ş.	Ankara AŞ.Fahri, No:26/3, Rod-Kör:2 İş Merkezi, No:305-309, Bornova	35110	İzmir	232 462 67 80	232 462 59 80
Eğilimleş Ltd. Şti.	1370 Sokak, No:42, Kat:4, Blok:403, Yalı İş Merkezi, Monro		İzmir	232 686 00 60	232 489 99 88
İnelcom Bilgisayar İletişim ve Telekomünikasyon Hiz.San.ve Tic.A.Ş.	Sarıoğlu Mahallesi Sivras Caddesi Bina Sokak No:7, Kocahasan		Kayseri	352 207 10 00	355 222 87 07
Almaz Bilgisayar Tic. Ltd. Şti.	Babak Mahallesi, Keleşnurev Sokak No:11/B	42080	Konya	332 320 65 20	332 320 65 19
Probi Bilgi İşlem Destek ve Dan.Şan. ve Tic. A. Ş.	İsmetpaşa Mahallesi, Yığılcım İş Merkezi, No:106	44100	İstanbul	422 325 35 07	422 326 27 02
Bosis Bilgi İşlem ve İletişim Sistemleri Tic. Ltd. Şti.	Halıç Örsöz Caddesi, No:3, Bodrum		İstanbul	252 316 05 32	252 313 83 04
Vip Bilgi İşlem ve Otomasyon Tic. ve San. Ltd. Şti.	İskitli Caddesi, No:6, Bofrum	55060	Samsun	362 230 68 52	362 234 77 22
Bihan Bilgisayar Eğitim Tic. San. Ltd. Şti.	Kızılay İshani, Kat:1-2		Sarıurla	414 215 05 52	414 215 22 12
Somdata Bilgisayar Paz. ve Tic. Ltd. Şti.	Kemeraltı Mahallesi, Gazipaşa Caddesi, 13/15 Saruhan İş Merkezi, No:6	61100	Tarazon	462 321 31 35	462 326 56 07

نبذة عن 65W Ultraportable AC Adapter

شكرا لشرائك 65W Ultraportable AC Adapter (تم تسميته بموقف التيار المتردد فيما بعد). يقوم موقف التيار المتردد بتزويد الحاسب بالطاقة، وشحن البطارية التي تم تركيبها بالحاسب أيضا.

تتضمن هذه المجموعة الاختيارية المكونات التالية:

- 65W Ultraportable AC Adapter
- دليل مستخدم 65W Ultraportable AC Adapter

تسجيل المنتج الخاص بك

شكرا لشرائك منتج Lenovo™ هذا. برجاء تخصيص وقت كافي لتسجيل المنتج وتزويدنا بالمعلومات التي ستساعد Lenovo على خدمتك بشكل أفضل في المستقبل. سيكون التعليق التقييمي الخاص بك قيمة كبيرة بالنسبة لنا في تطوير المنتجات والخدمات بالإضافة الى تطوير طرق أفضل للاتصال بك. قم بتسجيل المنتج الخاص بك على موقع الانترنت التالي:

<http://www.lenovo.com/register/>

ستقوم Lenovo بإرسال المعلومات والتعديلات بالمنتج الذي قمت بتسجيله الا اذا قمت بتحديد عدم رغبتك في استلام مزيد من المعلومات في الاستعلام الذي يوجد بموقع الانترنت.

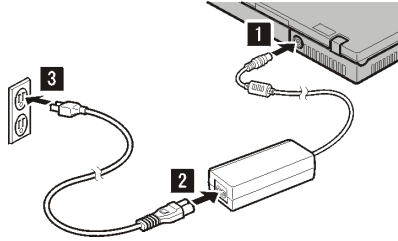
الحاسبات المدعمة

لا يدعم موقف التيار المتردد الذي قمت بشرائه بعض حاسبات Lenovo التي تم تقديمها للعملاء بالفعل. قبل استخدام موقف التيار المتردد، تأكد من أنه يدعم الحاسب الخاص بك.

توصيل موقف التيار المتردد

عند استخدام اختيار موقف التيار المتردد، قم بتوصيله بالحاسب الخاص بك كما هو موضح.

ملاحظة: قد لا يتماثل الشكل التوضيحي الموجود بهذه الوثيقة تماما مع الحاسب الشخصي الخاص بك.



关于 65 W Ultraportable 交流电源适配器

感谢您购买 65 W Ultraportable 交流电源适配器（以下称为交流电源适配器选件）。交流电源适配器选件为计算机提供电源，并为安装于计算机中的电池充电。

本选件包包括以下组件：

- 65 W Ultraportable 交流电源适配器
- 65 W Ultraportable 交流电源适配器用户指南

注册选件

感谢您购买本 Lenovo™ 产品。请花一点时间注册您的产品并向我们提供信息，这样将有助于 Lenovo 将来更好地为您服务。您的反馈对于我们在开发对您相当重要的产品和服务，以及寻找更好的方式以便与您沟通方面具有重要价值。请在以下 Web 站点注册您的选件：

<http://www.lenovo.com/register/>

Lenovo 将向您发送有关所注册产品的信息和更新，除非您在 Web 站点的调查表中表明您不希望接收进一步的信息。

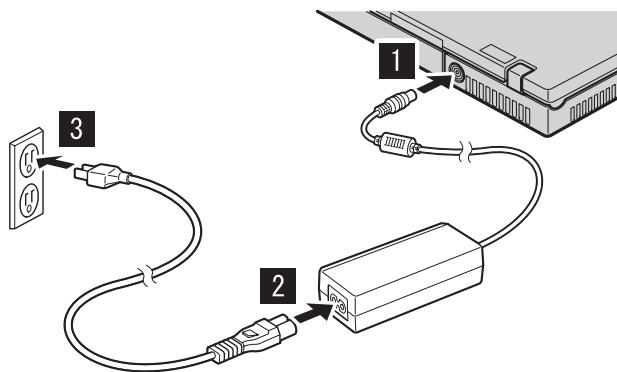
支持的计算机

您选购的交流电源适配器选件不支持某些已提供给客户的为 Lenovo 制造的计算机。使用交流电源适配器之前，请确保其支持您的计算机。

连接交流电源适配器

当您使用交流电源适配器选件时，请将其连接到计算机，如图所示。

注：本出版物中的插图可能与您的计算机并不完全相同。



關於 65W Ultraportable AC Adapter

感謝您選購 65W Ultraportable AC Adapter（以下稱爲 AC 整流器選用設備）。AC 整流器選用設備爲電腦提供電力，同時也爲安裝在電腦中的電池組充電。

此選用設備套件包含了下列元件：

- 65W Ultraportable AC Adapter
- *65W Ultraportable AC Adapter 使用手冊*

註冊您的選用設備

感謝您購買本 Lenovo™ 產品。請用一點時間註冊您的產品並提供我們資訊，此資訊將有助於 Lenovo 將來爲您提供更好的服務。您的寶貴意見對於我們在開發產品和提供與您切身相關的服務，以及發展出更方便與您通訊的方法來說很有價值。請前往下列網站註冊您的選用設備，網址如下：

<http://www.lenovo.com/register/>

除非您在網站問卷指示不想收到進一步資訊，否則 Lenovo 會提供您所註冊產品的相關資訊和更新版本。

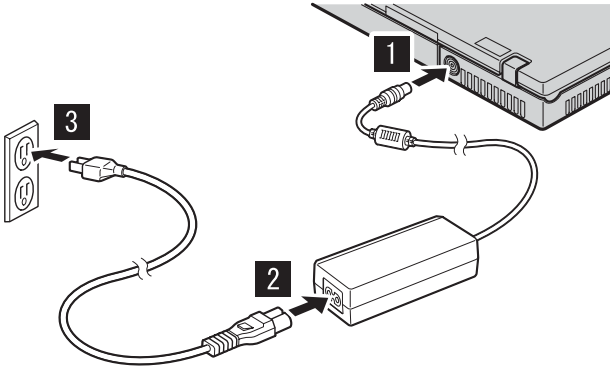
受支援的電腦

您所選購的 AC 整流器選用設備並不支援某些由 Lenovo 製造且已出貨給客戶的電腦。在使用前，請先確認它可支援您的電腦。

連接 AC 整流器

使用 AC 整流器選用設備時，請依圖示將其連接到您的電腦。

註：在此說明文件圖例中的電腦也許與您的電腦並不完全相同。



65W ウルトラポータブル AC アダプターについて

このたびは、65W ウルトラポータブル AC アダプター（ここ以降は、AC アダプター オプションと呼びます）をご購入いただきありがとうございます。AC アダプターは、ご使用のコンピューターに電力を供給するとともに、コンピューター内に取り付けられているバッテリー・パックを充電します。

本オプション・パッケージには、次のコンポーネントが入っています。

- 65W ウルトラポータブル AC アダプター
- 65W ウルトラポータブル AC アダプター ユーザーズ・ガイド

オプションの登録

本 Lenovo™ 製品をご購入いただきありがとうございます。お手数ですが、購入された製品を登録していただき、弊社が今後よりよいサービスを提供していく上で役立つようなコメントやご意見をお寄せくださいますようお願いいたします。お客様からのフィードバックは、弊社がお客様にとって重要な製品やサービスを開発したり、お客様とのコミュニケーション方法を改善する上で貴重なものです。お客様のオプションを次の Web サイトにご登録くださいますようお願いいたします。

<http://www.ibm.com/jp/jpccinfo/ibmjreg/>

ご登録いただいたお客様の製品につきましては、お客様から別途受信のお断りがない限り、弊社より新しい情報や更新情報をお送りさせていただきます。

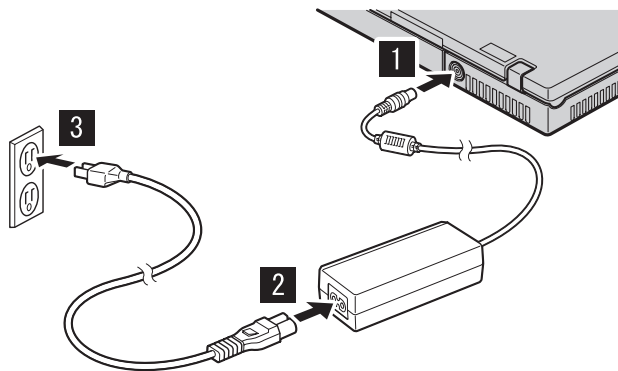
サポートされるコンピューター

お買い上げいただいた AC アダプターは、すでにお客様に出荷されている一部の Lenovo 製コンピューターをサポートしていません。AC アダプターをご使用になる前に、それがお客様のコンピューターをサポートしているか確認してください。

AC アダプターの接続

AC アダプターを使用するときは、図に示すように、ご使用のコンピューターに接続してください。

注：本書の図は、ご使用のコンピューターと多少異なっている場合があります。



Appendix A. Service and Support

The following information describes the technical support that is available for your product, during the warranty period or throughout the life of the product. Refer to your Lenovo Statement of Limited Warranty for a full explanation of Lenovo warranty terms.

Online technical support

Online technical support is available during the life of your product through the Lenovo Support Web site at <http://www.lenovo.com/think/support>.

During the warranty period, assistance for replacement or exchange of defective components is available. In addition, if your option is installed in a Lenovo computer, you might be entitled to service at your location. Your technical support representative can help you determine the best alternative.

Telephone technical support

Installation and configuration support through the Customer Support Center will be withdrawn or made available for a fee, at Lenovo's discretion, 90 days after the option has been withdrawn from marketing. Additional support offerings, including step-by-step installation assistance, are available for a nominal fee.

To assist the technical support representative, have available as much of the following information as possible:

- Option name
- Option number
- Proof of purchase
- Computer manufacturer, model, serial number, and manual
- Exact wording of the error message (if any)
- Description of the problem
- Hardware and software configuration information for your system

If possible, be at your computer. Your technical support representative might want to walk you through the problem during the call.

For a list of Service and Support phone numbers, see "Worldwide telephone list" on page B-16. Phone numbers are subject to change without notice. For the most current phone numbers, go to

<http://www.lenovo.com/think/support> and click **Support phone list**. If the number for your country or region is not listed, contact your reseller or Lenovo marketing representative.

Appendix B. Warranty information

Warranty Information

The complete Statement of Limited Warranty is available in 29 languages and may be viewed online at <http://www.lenovo.com/think/warranty> or can be obtained by calling the phone number for your country in the telephone list below.

Warranty Information applicable to your Machine:

1. Warranty Period: 1 year
2. Type of Warranty Service: Customer Replaceable Unit ("CRU") and Customer Carry-In or Mail-In Service
3. Statement of Limited Warranty Version: LSOLW-00 05/2005

For warranty service consult the telephone list below. For service in countries not yet listed, visit www.lenovo.com/think/support and click Support Phone List for a current telephone listing. Phone numbers are subject to change without notice.

Garantie

La Déclaration de Garantie complète, disponible dans 29 langues, est accessible en ligne, à l'adresse <http://www.lenovo.com/think/warranty> ou peut être obtenue en appelant le numéro de téléphone correspondant à votre pays dans la liste ci-après.

Garantie applicable à votre Machine :

1. Période de garantie : 1 an
2. Type de service de garantie : Unité remplaçable par l'utilisateur et service après-vente en magasin ou par courrier
3. Version de la Déclaration de Garantie : LSOLW-00 05/2005

Pour connaître les services de garantie, consultez la liste de numéros de téléphone ci-après. Pour les services de garantie dans les pays ne figurant pas dans cette liste, reportez-vous au site <http://www.lenovo.com/think/support/>

et cliquez sur Support Phone List pour obtenir une liste de numéros de téléphone en cours. Les numéros de téléphone font l'objet de modification sans préavis.

Gewährleistungsinformationen

Die vollständige Erklärung über begrenzte Gewährleistung steht in 29 Sprachen zur Verfügung und kann online unter <http://www.lenovo.com/think/warranty> angezeigt werden. Sie können die Erklärung auch über die unten angegebene Telefonnummer für Ihr Land anfordern.

Für Ihre Maschine gelten folgende Gewährleistungsinformationen:

1. Gewährleistungszeitraum: 1 Jahr
2. Art des Gewährleistungsservice: "CRU"-Service (Customer Replaceable Unit, durch den Kunden austauschbare Funktionseinheit) und Anlieferung durch den Kunden oder per Versand
3. Version der Erklärung über begrenzte Gewährleistung: LSOLW-00 05/2005

Um Gewährleistungsservice in Anspruch zu nehmen, rufen Sie die entsprechende Telefonnummer aus der folgenden Liste an. Um Service in noch nicht aufgelisteten Ländern anzufordern, rufen Sie die Website unter www.lenovo.com/think/support auf, und klicken Sie auf "Support Phone List". Daraufhin wird eine aktuelle Liste mit Telefonnummern angezeigt. Telefonnummern können jederzeit ohne Vorankündigung geändert werden.

Informazioni sulla garanzia

Le informazioni complete sulle istruzioni di garanzia limitata sono disponibili in 29 lingue può essere visualizzato online nel sito <http://www.lenovo.com/think/warranty> oppure si può ottenere tramite chiamata telefonica al numero telefonico del proprio paese nell'elenco sottostante.

Informazioni di garanzia applicabili alla propria macchina:

1. Periodo di garanzia 1 anno
2. Tipo del servizio di garanzia Customer Replaceable Unit ("CRU") e Customer Carry-In o Mail-In Service
3. Dichiarazioni della versione del limite di garanzia: LSOLW-00 05/2005

Per il servizio di garanzia consultare l'elenco telefonico riportato di seguito. Per il servizio nei paesi non in elenco, visitare il sito www.lenovo.com/think/support e fare clic su supporto Elenco telefonico per un elenco telefonico corrente. I numeri telefonici sono soggetti a modifiche senza previa notifica.

Información de garantía

El documento completo de Declaración de garantía limitada está disponible en 29 idiomas y se puede consultar en línea desde la dirección <http://www.lenovo.com/think/warranty> o puede conseguirlo llamando al número de teléfono de su país que figura en la lista siguiente.

Información de garantía aplicable a su máquina:

1. Período de garantía: 1 año
2. Tipo de servicio de garantía: Unidad reemplazable por el cliente ("CRU") y servicio de transporte por parte del usuario o correo
3. Versión de la declaración de garantía limitada: LSOLW-00 05/2005.

Si desea información sobre el servicio de garantía, consulte la lista de teléfonos siguiente. Para obtener servicio en los países que no figuran listados, visite www.lenovo.com/think/support y pulse Support Phone List para conseguir un listado telefónico actualizado. Los números de teléfono están sujetos a cambio sin previo aviso.

Informações de Garantia

A Declaração de Garantia Limitada completa está disponível em 29 idiomas e pode ser exibida utilizando-se o CD do produto ou on-line no endereço <http://www.lenovo.com/think/warranty>. Ela também pode ser obtida ligando para o número de telefone de seu país na lista de telefones abaixo.

Informações de garantia aplicáveis ao seu computador:

1. Período de Garantia: 1 ano
2. Tipo de Serviço de Garantia: CRU (Customer Replaceable Unit) e Serviço de Atendimento ou Mala Direta ao Cliente
3. Versão da Declaração de Garantia Limitada: LSOLW-00 05/2005

Para obter o serviço de garantia, consulte a lista telefônica abaixo. Para serviços em países que ainda não estão listados, visite o endereço

www.lenovo.com/think/support e clique em Support Phone List para obter uma lista atual de telefones. Os números de telefone estão sujeitos a alteração sem aviso prévio.

Garanti Bilgileri

Sınırlı Garanti Bildirimi'nin tamamı 29 dile çevrilmiştir. Sınırlı Garanti Bildirimi'ni <http://www.lenovo.com/think/warranty> adresinden çevrimiçi olarak görüntüleyebilir ya da aşağıdaki telefon listesinde yer alan ülkenize ilişkin telefon numarasını arayarak edinebilirsiniz.

Makineniz için geçerli Garanti Bilgileri:

1. Garanti Süresi: 2 yıl
2. Garanti Hizmetinin Tipi: Müşteri Yerinde Hizmet ve Müşteri Tarafından Teslim ya da Postayla Teslim Hizmeti
3. Sınırlı Garanti Bildirimi'nin Sürümü: LSOLW-00 05/2005

Garanti hizmeti için aşağıdaki telefon listesine bakın. Listede olmayan ülkelerdeki hizmetler için www.lenovo.com/think/support adresine gidip Support Phone List seçeneğini tıklayarak güncel telefon listesine ulaşabilirsiniz. Telefon numaraları bildirilmeden değiştirilebilir.

Informace o záruce

Úplné Prohlášení o omezené záruce je k dispozici v 29 jazycích a můžete si jej prohlédnout webové stránce <http://www.lenovo.com/think/warranty>, nebo si jej můžete telefonicky vyžádat. Čísla pro jednotlivé země jsou uvedena dále.

Informace o záruce vztahující se k vašemu stroji:

1. Záruční doba: 1 rok
2. Typ záručního servisu: CRU (Customer Replaceable Unit, díly vyměnitelné zákazníkem) a servis typu Customer Carry-In nebo Mail-In.
3. Prohlášení o omezené záruce, verze: LSOLW-00 05/2005

Informace o záručním servisu získáte na následujících telefonních číslech. Není-li na seznamu uvedeno číslo země, kterou hledáte, navštivte webové stránky www.lenovo.com/think/support, klepněte na odkaz Support Phone List (telefonní seznam podpory) a zobrazí se aktuální telefonní seznam. Telefonní čísla se mohou měnit bez předchozího upozornění.

Záručné informácie

Kompletné Vyhlásenie o obmedzenej záruke je k dispozícii v 29 jazykoch a môžete si ho pozrieť online na <http://www.lenovo.com/think/warranty> alebo ho získate, keď zavoláte na telefónne číslo vašej krajiny, uvedené v telefónnom zozname.

Záručné informácie týkajúce sa vášho Počítača:

1. Záručná doba: 1 rok
2. Typ záručného servisu: Customer Replaceable Unit ("CRU") a Customer Carry-In alebo Mail-In Service
3. Verzia vyhlásenia o obmedzenej záruke: LSOLW-00 05/2005

Záručný servis konzultujte na čísle v dole uvedenom telefónnom zozname. Servis v krajinách, ktoré tu nie sú uvedené, nájdete na www.lenovo.com/think/support. Po kliknutí na Support Phone List nájdete aktuálny telefónny zoznam. Telefónne čísla sú predmetom zmeny bez upozornenia.

保修信息

可以 29 种语言获取完整的“有限保证声明”，也可从 <http://www.lenovo.com/think/warranty> 在线查看该“有限保证声明”或者通过拨打以下电话列表中您所在国家的电话号码来获取该“有限保证声明”。

适用于您的机器的保修信息：

1. 保修期：1 年
2. 保修服务类型：客户可更换部件（“CRU”）和客户送修或邮寄服务
3. “有限保证声明”版本：LSOLW-00 05/2005

下面列出了关于保修服务的咨询电话。对于在未列出的国家或地区中的服务，请访问 www.lenovo.com/think/support 并且单击 Support Phone List 以获取当前的电话列表。电话号码如有更改，恕不另行通知。

保固資訊

完整的有限保固聲明共有 29 個語言版本，您可從 <http://www.lenovo.com/think/warranty> 查閱，或撥打下列的本國電話號碼索取。

您的機器的保固資訊如下：

1. 保固期限：1 年
2. 保固服務類型：客戶可更換裝置 ("CRU") 及客戶親自或郵寄送修服務
3. 有限保證聲明版本：LSOLW-00 05/2005

保固維修服務電話清單如下。若找不到某些國家的服務電話，請造訪 www.lenovo.com/think/support，然後按一下 Support Phone List 以查閱目前的電話清單。電話號碼若有變更恕不另行通知。

保証情報

完全な「保証の内容と制限」は 29 か国語で提供され、Web サイトの <http://www.lenovo.com/think/warranty> でご覧になれます。または、下記の電話番号リストに記載された電話番号におかけいただいても入手することができます。

ご使用のマシンの保証情報は次のとおりです:

1. 保証期間: 1 年
2. 保証サービスの種類: お客様での取り替え可能部品 (CRU) および持ち込みまたは郵送サービス
3. 保証の内容と制限のバージョン: LSOLW-00 05/2005

保証サービスについては、以下リストにある電話番号にお問い合わせください。リストにない国におけるサービスについては、Web サイト <http://www.lenovo.com/think/support> にアクセスして、「Support Phone List」をクリックして最新の電話番号リストをご覧ください。電話番号は、予告なしに変更される場合があります。

معلومات الضمان

البيان الكامل للضمان المحدود متاح في ٢٩ لغة ويمكن مشاهدته من خلال القرص المدمج للمنتج أو على الإنترنت بالموقع <http://www.lenovo.com/think/warranty> أو يمكن الحصول عليه بالاتصال برقم تليفون الخاص ببلدك في كشف التليفونات المعروض بأسفل .

معلومات الضمان التي سيتم تطبيقها على الجهاز الخاص بك:

1. فترة الضمان: سنة
2. نوع خدمة الضمان: "Customer Replaceable Unit ("CRU) و Customer Carry-In Mail-In Service أو
3. بيان نسخة الضمان المحدود: LSOLW-00 05/2005

بالنسبة لخدمة الضمان، ارجع الى كشف التليفونات الموجود بأسفل. بالنسبة للبلاد التي لا يتم عرضها، ارجع الى الموقع www.lenovo.com/think/support/ واضغط على دعم كشف التليفونات لعرض كشف التليفونات الحالي. أرقام التليفون عرضة للتغيير بدون أي إشعار.

Гаранционна информация

Пълният текст на Ограничените гаранционни условия е достъпен на 29 езика, и може да бъде прегледан онлайн на <http://www.lenovo.com/think/warranty>, или да бъде придобит чрез обаждане на телефонния номер за вашата страна в списъка с телефони по-долу.

Гаранционна информация, приложима за вашата Машина:

1. Гаранционен период: 1 година
2. Тип гаранционно обслужване: Подменяеми от клиента части ("CRU") и Обслужване с доставка от клиента или по пощата
3. Версия на Ограничените гаранционни условия: LSOLW-00 05/2005

За гаранционно обслужване вижте списъка с телефони по-долу. За обслужване в неспоменати засега страни, посетете www.lenovo.com/think/support, и щракнете на Support Phone List за актуален списък на телефоните. Телефонните номера подлежат на промяна без предизвестие.

Informacije o jamstvu

Potpuna Izjava o ograničenom jamstvu je dostupna na 29 jezika i može se vidjeti online na <http://www.lenovo.com/think/warranty> ili se može dobiti pozivom na telefonski broj za vašu zemlju iz donjeg popisa s brojevima telefona.

Informacije o jamstvu koje se odnose na vaš Stroj:

1. Period jamstva: 1 godina
2. Tip jamstvenog servisa: Korisnički zamjenjiva jedinica ("CRU") i servis s dostavom ili poštanskom otpremom korisnika
3. Izjava o ograničenom jamstvu Verzija: LSOLW-00 05/2005

Radi jamstvenog servisa pogledajte donji popis telefona. Za servis u zemljama koje još nisu na popisu posjetite <http://www.lenovo.com/think/support/> i kliknite Popis telefona za podršku za trenutni popis telefona. Telefonski brojevi se mogu promijeniti bez prethodne obavijesti.

Garantioplysninger

Det fulde Servicebevis (Statement of Limited Warranty) er oversat til 29 sprog og kan læses online på adressen <http://www.lenovo.com/think/warranty> eller kan fås ved at ringe til telefonnummeret for Deres land i nedenstående telefonliste.

Garantioplysninger for Deres Maskine:

1. Garantiperiode: 1 år
2. Servicetype i garantiperioden: CRU-service (Customer Replaceable Unit) og indleveringsservice eller indsendelsesservice
3. Version af Servicebevis: LSOLW-00 05/2005

Se nedenstående telefonliste vedr. garantiservice. Lande, som ikke er nævnt i listen, findes på adressen www.lenovo.com/think/support. Klik på Support Phone List for at få vist en aktuel liste over telefonnumre. Telefonnumre kan ændres uden forudgående varsel.

Takuutiedot

Rajoitetun takuun ehdot sisältävä asiakirja on saatavana 29 eri kielellä, ja sitä voi tarkastella siirtymällä WWW-osoitteeseen

<http://www.lenovo.com/think/warranty>, tai sen voi pyytää soittamalla jäljempänä olevassa puhelinnumeroluettelossa olevaan maakohtaiseen numeroon.

Konetta koskevat takuutiedot:

1. Takuuaika: 1 vuosi
2. Takuupalvelun laji: Asiakkaan vaihdettavissa olevia osia (CRU) koskeva palvelu ja asiakkaan toteuttama kuljetus tai postikuljetus
3. Rajoitetun takuun ehtojen versio: LSOLW-00 05/2005

Saat takuupalveluja soittamalla sopivaan alla olevan luettelon puhelinnumeroon. Jos haluamaasi maata ei ole vielä luettelossa, siirry WWW-osoitteeseen www.lenovo.com/think/support ja napsauta Support Phone List -linkkiä, jotta näkyviin tulee ajan tasalla oleva maakohtaisten palvelupuhelinnumeroiden luettelo. Puhelinnumerot voivat muuttua ilman ennakoilmoitusta.

Πληροφορίες σχετικά με την Εγγύηση

Το πλήρες κείμενο της Δήλωσης Περιορισμένης Εγγύησης είναι διαθέσιμο σε 29 γλώσσες και μπορεί να εξεταστεί από την ιστοσελίδα <http://www.lenovo.com/think/warranty> ή να παραγγελθεί στον αριθμό τηλεφώνου που αναφέρεται για τη χώρα σας στον παρακάτω τηλεφωνικό κατάλογο.

Πληροφορίες σχετικά με την Εγγύηση που ισχύει για τη Μηχανή σας:

1. Περίοδος Εγγύησης: 1 έτος
2. Είδος Υπηρεσιών Εγγύησης: Υπηρεσία Μονάδων Αντικαθιστώμενων από τον Πελάτη ("CRU") και Υπηρεσίες με Μεταφορά ή Αποστολή από τον Πελάτη
3. Εκδοχή της Δήλωσης Περιορισμένης Εγγύησης: LSOLW-00 05/2005

Για τη λήψη υπηρεσιών εγγύησης, συμβουλευτείτε τον παρακάτω τηλεφωνικό κατάλογο. Για τη λήψη υπηρεσιών εγγύησης σε χώρα που δεν περιλαμβάνεται στον κατάλογο, επισκεφθείτε την ιστοσελίδα www.lenovo.com/think/support και επιλέξτε Support Phone List για να πληροφορηθείτε τους τρέχοντες αριθμούς τηλεφώνου. Οι αριθμοί τηλεφώνου υπόκεινται σε αλλαγή χωρίς ειδοποίηση.

מידע אחריות

הצהרת האחריות המוגבלת המלאה זמינה ב-29 שפות,
וניתן למצוא אותה באינטרנט, בכתובת
<http://www.lenovo.com/think/warranty>

מידע אחריות הישים למחשב שלכם:

1. תקופת אחריות: שנה אחת
2. סוג של שירות אחריות: יחידות להחלפה עצמית ("CRU") ושירות נשיאה עצמית של לקוחות או משלוח בדואר
3. גרסת הצהרת האחריות המוגבלת: 05/2005 LSOLW-00

לקבלת שירות אחריות, עיינו ברשימת הטלפונים שלהלן.
לקבלת שירות במדינות שאינן מפורטות, בקרו באתר
www.lenovo.com/think/support, ולחצו על
Support Phone List לקבלת רשימת טלפונים עדכנית.
מספרי הטלפון ניתנים לשינוי ללא הודעה מראש.

Jótállási tájékoztatás

A Korlátozott jótállási nyilatkozat 29 nyelven rendelkezésre áll, és megtekinthető online módon a <http://www.lenovo.com/think/warranty> címen, vagy beszerezhető az országára vonatkozó, alábbi telefonszám felhívásával.

A gépre vonatkozó jótállási feltételek:

1. Jótállási időtartam: 1 év
2. Garanciális szerviz típusa: Felhasználó által cserélhető egység ("CRU") és beszállításos vagy postázásos szerviz
3. Korlátozott jótállási nyilatkozat száma: LSOLW-00 05/2005

A garanciális szervizről az alábbi telefonszámokon érdeklődhet. A fel nem sorolt országokban rendelkezésre álló szervizekről a www.lenovo.com/think/support címen tájékozódhat (kattintson a Support Phone List elemre az aktuális telefonszámokért).

A telefonszámok bejelentés nélkül megváltozhatnak.

Bozeng jebo

wanronen bozeng jehan seonngeseon 29gae eneoreo sareong ganeunghamyeo, <http://www.lenovo.com/think/warranty>eseon onraonireo bol su eogoo areo naeoldeon jeonhwanbeonheoseo haedang gukagyeon beonheoro jeonhwaneeo geolereon su eogeeunndaeon.

sareongja siseuteume jeokongdoeneon bozeng jebo:

1. bozeng gigan: 1neon
2. bozeng seobiseu yuhyeong: gogae gyeoje ganeun yeuniteo (CRU) mit gogae jeokjeop unseung doeneon upeon seobiseu
3. bozeng jehan seonngeseon beonjeon: LSOLW-00 05/2005

bozeng seobiseue daehaseoneon areo naeoldeon jeonhwanbeonheoro muniohasipseo. areo jeok mokroge beonyeongdoejeon aeon gukagyeonseon seobiseueo wihae www.lenovo.com/think/supporteeon bangmoneohae Support Phone Listeeon neureon cheosin jeonhwanbeonheo mokrogeol su eogeeunndaeon. jeonhwanbeonheon sareon teongogeeon beongyeongdeul su eogeeunndaeon.

Garantibetingelser

De fullstendige garantibetingelsene er tilgjengelige på 29 språk på produkt-CDen eller på nettadressen <http://www.lenovo.com/think/warranty>

Garantibetingelser som gjelder for din maskin:

1. Garantiperiode: 1 år

2. Type garantiservice: Customer Replaceable Unit ("CRU") og service med innlevering eller innsending

3. Versjon av garantibetingelser: LSOLW-00 05/2005

For garantiservice, se telefonlisten nedenfor. For service i land som ikke er på listen ennå, gå til www.lenovo.com/think/support og klikk på Support Phone List for å få en oppdatert telefonliste. Telefonnumre kan endres uten forhåndsvarsel.

Informacje gwarancyjne

Kompletne Warunki Ograniczonej Gwarancji są dostępne w 29 językach i można się je uzyskać korzystając adresu <http://www.lenovo.com/think/warranty> lub dzwoniąc pod numer telefonu dla danego kraju, znajdujący się na poniższej liście.

Informacje gwarancyjne mające zastosowanie do Maszyny Klienta:

1. Okres gwarancyjny: 1 rok
2. Typ serwisu gwarancyjnego: serwis polegający na dostarczeniu Części Wymienianych przez Klienta (Customer Replaceable Unit - CRU) oraz serwis z wysyłką lub transportem przez Klienta
3. Warunki Ograniczonej Gwarancji, wersja: LSOLW-00 05/2005

Lista telefonów do osób odpowiedzialnych za serwis gwarancyjny znajduje się poniżej. Aktualne numery telefonów do osób odpowiedzialnych za serwis w krajach nieuwzględnionych poniżej można znaleźć pod adresem www.lenovo.com/think/support, klikając przycisk Support Phone List. Numery telefonów mogą ulec zmianie bez powiadomienia.

Informações Sobre a Garantia

A Declaração de Garantia Limitada encontra-se disponível em 29 idiomas e pode ser consultada em linha no endereço <http://www.lenovo.com/think/warranty> ou pode ser obtida ligando para o número de telefone do respectivo país disponível na lista de telefones em baixo.

Informação sobre garantia aplicável à Máquina:

1. Período de Garantia: 1 ano
2. Tipo de Serviço de Garantia: Unidade Substituível pelo Cliente ("CRU") e Serviço de Entrega ou Envio
3. Versão da Declaração de Garantia Limitada: LSOLW-00 05/2005

Para obter o número de telefone de contacto do serviço de garantia, consulte a lista de números telefone abaixo apresentada. Para obter o serviço em países que ainda não constam na lista, consulte o Web site www.lenovo.com/think/support e faça clique em Support Phone List para obter uma lista telefónica actual. Os números de telefone estão sujeitos a alteração semaviso prévio.

Информация о гарантии

Полный текст Заявления об ограниченной гарантии переведен на 29 языков; с ним можно ознакомиться на Web-сайте <http://www.lenovo.com/think/warranty> или позвонив по телефону; номер телефона для вашей страны приведен в нижеследующем списке.

Информация о гарантии для вашего компьютера:

1. Гарантийный срок: 1 год
2. Тип гарантийного обслуживания: Обслуживание при отказе узлов, подлежащих замене силами заказчика (CRU), и обслуживание при доставке или пересылке по почте силами заказчика.
3. Версия Заявления об ограниченной гарантии: LSOLW-00 05/2005

За гарантийным обслуживанием обращайтесь по телефонам, приведенным ниже. Если в списке нет телефона для вашей страны, посетите сайт <http://www.lenovo.com/think/support/> и щелкните по Support Phone List (Список телефонов поддержки), чтобы просмотреть текущий список телефонов. Приведенные здесь номера телефонов могут измениться без дополнительного уведомления.

Garancijske informacije

Celotna izjava o omejeni garanciji je na voljo v 29 jezikih, ogledate si jo lahko nasplesni strani <http://www.lenovo.com/think/warranty> oz. jo pridobite tako, da pokličete telefonsko številko za vašo državo s spodnjega seznama telefonskih števil.

Garancijski pogoji, ki veljajo za vaš računalnik:

1. Garancijsko obdobje: 1 leto
2. Vrsta garancijskega servisa: del, ki ga lahko zamenja stranka ("CRU"), in strankina ali poštna dostava na servis
3. Različica izjave o omejeni garanciji: LSOLW-00 05/2005

Za garancijski servis si oglejte spodnji seznam telefonskih števil. Za servis v državah, ki jih seznam še ne vključuje, obiščite www.lenovo.com/think/support in za najnovejši seznam telefonskih števil kliknite Support Phone List (Seznam telefonskih števil za podporo). Pridružujemo si pravico do sprememb telefonskih števil brez predhodnega obvestila.

Garantiinformation

Den fullständiga Begränsade garantin (Statement of Limited Warranty) finns på 29 språk och kan läsas i sin helhet på webben, adress <http://www.lenovo.com/think/warranty> Du kan också beställa den på ditt lands telefonnummer i listan nedan.

Garantiinformation som gäller den här Maskinen:

1. Garantitid: 1 år
2. Typ av garantiservice: Kunden byter ut delar ("CRU" - Customer Replaceable Unit) och Kunden lämnar in (Customer Carry-In) eller skickar in (Mail-In) Maskinen på service
3. Begränsad garanti, version: LSOLW-00 05/2005

Telefonnummer till ställen där du kan få garantiservice finns i listan nedan. Länder som ännu inte finns i listan kan du hitta på

<http://www.lenovo.com/think/support/> Klicka på Support Phone List så får du en aktuell telefonlista. Telefonnummer kan komma att ändras utan att du meddelas om detta.

Worldwide telephone list

Phone numbers are subject to change without notice. For the most current phone numbers, go to <http://www.lenovo.com/think/support> and click **Support phone list**.

Country or Region	Telephone Number
Africa	Africa: +44 (0)1475-555-055 South Africa: +27-11-3028888 and 0800110756 Central Africa: Contact your Lenovo service provider
Argentina	0800-666-0011 (Spanish)
Australia	131-426 (English)
Austria	Up and running support: 01-24592-5901 Warranty service and support: 01-211-454-610 (German)
Belgium	Up and running support: 02-210-9820 (Dutch) Up and running support: 02-210-9800 (French) Warranty service and support: 02-225-3611 (Dutch, French)
Bolivia	0800-0189 (Spanish)
Brazil	Sao Paulo region: (11) 3889-8986 Toll free outside Sao Paulo region: 0800-7014-815 (Brazilian Portuguese)
Canada	1-800-565-3344 (English, French) In Toronto only call: 416-383-3344
Chile	800-224-488 (Spanish)
China	800-810-1818 (Mandarin)
China (Hong Kong S.A.R.)	Home PC: 852-2825-7799 Commercial PC: 852-8205-0333 ThinkPad and WorkPad: 852-2825-6580 (Cantonese, English, Putonghua)
Colombia	1-800-912-3021 (Spanish)
Costa Rica	284-3911 (Spanish)
Croatia	0800-0426
Cyprus	+357-22-841100
Czech Republic	+420-2-7213-1316
Denmark	Up and running support: 4520-8200 Warranty service and support: 7010-5150 (Danish)

Country or Region	Telephone Number
Dominican Republic	566-4755 566-5161 ext. 8201 Toll Free within the Dominican Republic: 1-200-1929 (Spanish)
Ecuador	1-800-426911 (Spanish)
El Salvador	250-5696 (Spanish)
Estonia	+386-61-1796-699
Finland	Up and running support: 09-459-6960 Warranty service and support: +358-800-1-4260 (Finnish)
France	Up and running support: 0238-557-450 Warranty service and support (hardware): 0810-631-213 Warranty service and support (software): 0810-631-020 (French)
Germany	Up and running support: 07032-15-49201 Warranty service and support: 01805-25-35-58 (German)
Greece	+30-210-680-1700
Guatemala	335-8490 (Spanish)
Honduras	Tegucigalpa & San Pedro Sula: 232-4222 San Pedro Sula: 552-2234 (Spanish)
Hungary	+36-1-382-5720
India	1600-44-6666 Alternate Toll Free: +91-80-2678-8940 (English)
Indonesia	800-140-3555 +62-21-251-2955 (English, Bahasa, Indonesian)
Ireland	Up and running support: 01-815-9202 Warranty service and support: 01-881-1444 (English)
Italy	Up and running support: 02-7031-6101 Warranty service and support: +39-800-820094 (Italian)

Country or Region	Telephone Number
Japan	<p>Desktop: Toll free: 0120-887-870 For International: +81-46-266-4724</p> <p>ThinkPad: Toll free: 0120-887-874 For International: +81-46-266-4724</p> <p>Both of the above numbers will be answered with a Japanese language voice prompt. For telephone support in English, please wait for the Japanese voice prompt to end, and an operator will answer. Please ask for "English support please," and your call will be transferred to an English speaking operator.</p> <p>PC Software: 0120-558-695 Overseas calls: +81-44-200-8666 (Japanese)</p>
Korea	1588-5801 (Korean)
Latvia	+386-61-1796-699
Lithuania	+386-61-1796-699
Luxembourg	+352-298-977-5063 (French)
Malaysia	1800-88-8558 (English, Bahasa, Melayu)
Malta	+356-23-4175
Mexico	001-866-434-2080 (Spanish)
Middle East	+44 (0)1475-555-055
Netherlands	+31-20-514-5770 (Dutch)
New Zealand	0800-446-149 (English)
Nicaragua	255-6658 (Spanish)
Norway	Up and running support: 6681-1100 Warranty service and support: 8152-1550 (Norwegian)
Panama	206-6047 (Spanish)
Peru	0-800-50-866 (Spanish)
Philippines	1800-1888-1426 +63-2-995-8420 (English, Filipino)
Poland	+48-22-878-6999
Portugal	+351-21-892-7147 (Portuguese)
Romania	+4-021-224-4015

Country or Region	Telephone Number
Russian Federation	+7-095-940-2000 (Russian)
Singapore	1800-3172-888 (English, Bahasa, Melayu)
Slovakia	+421-2-4954-1217
Slovenia	+386-1-4796-699
Spain	91-714-7983 91-397-6503 (Spanish)
Sri Lanka	+94-11-2448-442 (English)
Sweden	Up and running support: 08-477-4420 Warranty service and support: 077-117-1040 (Swedish)
Switzerland	Up and running support: 058-333-0900 Warranty service and support: 0800-55-54-54 (German, French, Italian)
Taiwan	886-2-8723-9799 (Mandarin)
Thailand	1-800-299-229 (Thai)
Turkey	00800-4463-2041 (Turkish)
United Kingdom	Up and running support: 01475-555-055 Warranty service and support (hardware): 08705-500-900 Warranty service and support (software): 08457-151-516 (English)
United States	1-800-426-7378 (English)
Uruguay	000-411-005-6649 (Spanish)
Venezuela	0-800-100-2011 (Spanish)
Vietnam	For northern area and Hanoi: 84-4-8436675 For southern area and Ho Chi Minh City: 84-8-829-5160 (English, Vietnamese)

Guarantee supplement for Mexico

This supplement is considered part of Lenovo's Statement of Limited Warranty and shall be effective solely and exclusively for products distributed and commercialized within Territory of the Mexican United States. In the event of a conflict, the terms of this supplement shall apply.

All software programs pre-loaded in the equipment shall only have a thirty-(30) day guarantee for installation defects from the date of purchase. Lenovo is not responsible for the information in such software programs and/or any additional software programs installed by you or installed after purchase of the product.

Services not chargeable to the guarantee shall be charged to the final user, prior an authorization.

In the event that warranty repair is required please call the Customer Support Center at 001-866-434-2080, where you will be directed to the nearest Authorized Service Center. Should no Authorized Service Center exist in your city, location or within 70 kilometers of your city or location, the guarantee includes any reasonable delivery charges related to the transportation of the product to our nearest Authorized Service Center. Please call the nearest Authorized Service Center to obtain the necessary approvals or information concerning the shipment of the product and the shipment address.

To obtain a list of Authorized Service Centers, please visit:

<http://www.lenovo.com/mx/es/servicios>

Manufactured by:

SCI Systems de México, S.A. de C.V.
Av. De la Solidaridad Iberoamericana No. 7020
Col. Club de Golf Atlas
El Salto, Jalisco, México
C.P. 45680,
Tel. 01-800-3676900

Marketing by:

Lenovo de México, Comercialización y
Servicios, S. A. de C. V.
Alfonso Nápoles Gándara No 3111
Parque Corporativo de Peña Blanca
Delegación Álvaro Obregón
México, D.F., México
C.P. 01210,
Tel. 01-800-00-325-00

Appendix C. Notices

Lenovo may not offer the products, services, or features discussed in this document in all countries. Consult your local Lenovo representative for information on the products and services currently available in your area. Any reference to a Lenovo product, program, or service is not intended to state or imply that only that Lenovo product, program, or service may be used. Any functionally equivalent product, program, or service that does not infringe any Lenovo intellectual property right may be used instead. However, it is the user's responsibility to evaluate and verify the operation of any other product, program, or service.

Lenovo may have patents or pending patent applications covering subject matter described in this document. The furnishing of this document does not give you any license to these patents. You can send license inquiries, in writing, to:

*Lenovo (United States), Inc.
500 Park Offices Drive, Hwy. 54
Research Triangle Park, NC 27709
U.S.A.
Attention: Lenovo Director of Licensing*

LENOVO GROUP LTD. PROVIDES THIS PUBLICATION "AS IS" WITHOUT WARRANTY OF ANY KIND, EITHER EXPRESS OR IMPLIED, INCLUDING, BUT NOT LIMITED TO, THE IMPLIED WARRANTIES OF NON-INFRINGEMENT, MERCHANTABILITY OR FITNESS FOR A PARTICULAR PURPOSE. Some jurisdictions do not allow disclaimer of express or implied warranties in certain transactions, therefore, this statement may not apply to you.

This information could include technical inaccuracies or typographical errors. Changes are periodically made to the information herein; these changes will be incorporated in new editions of the publication. Lenovo may make improvements and/or changes in the product(s) and/or the program(s) described in this publication at any time without notice.

The products described in this document are not intended for use in implantation or other life support applications where malfunction may result in injury or death to persons. The information contained in this document does not affect or change Lenovo product specifications or warranties. Nothing in this document shall operate as an express or implied license or indemnity under the intellectual property rights of Lenovo or third parties. All

information contained in this document was obtained in specific environments and is presented as an illustration. The result obtained in other operating environments may vary.

Lenovo may use or distribute any of the information you supply in any way it believes appropriate without incurring any obligation to you.

Any references in this publication to non-Lenovo Web sites are provided for convenience only and do not in any manner serve as an endorsement of those Web sites. The materials at those Web sites are not part of the materials for this Lenovo product, and use of those Web sites is at your own risk.

Any performance data contained herein was determined in a controlled environment. Therefore, the result obtained in other operating environments may vary significantly. Some measurements may have been made on development-level systems and there is no guarantee that these measurements will be the same on generally available systems. Furthermore, some measurements may have been estimated through extrapolation. Actual results may vary. Users of this document should verify the applicable data for their specific environment.

Important information for the European Directive 2002/96/EC



EU Only

The WEEE mark applies only to countries within the European Union (EU) and Norway. Appliances are labeled in accordance with European Directive 2002/96/EC concerning waste electrical and electronic equipment (WEEE). The Directive determines the framework for the return and recycling of used appliances as applicable throughout the European Union. This label is applied to various products to indicate that the product is not to be thrown away, but rather reclaimed upon end of life per this Directive. Users of electrical and electronic equipment (EEE) with the WEEE marking per Annex IV of the WEEE Directive must not dispose of end of life EEE as unsorted municipal waste, but use the collection framework available to them for the return,

recycle, recovery of WEEE and minimize any potential effects of EEE on the environment and human health due to the presence of hazardous substances. For additional WEEE information go to:
<http://www.lenovo.com/lenovo/environment>.

Ce marquage s'applique uniquement aux pays de l'Union européenne (EU) et à la Norvège. Les appareils sont marqués conformément à la Directive 2002/96/CE du Conseil Européen relative aux déchets d'équipements électriques et électroniques (DEEE). Cette directive, applicable à l'ensemble des pays de l'Union européenne, concerne la collecte et le recyclage des appareils usagés. Ce marquage est apposé sur différents produits pour indiquer que ces derniers ne doivent pas être jetés, mais récupérés en fin de vie, conformément à cette directive. Les utilisateurs d'équipements électriques et électroniques portant le marquage DEEE, conformément à l'Annexe IV de la Directive DEEE, ne doivent pas mettre au rebut ces équipements comme des déchets municipaux non triés, mais ils doivent utiliser la structure de collecte mise à disposition des clients pour le retour, le recyclage et la récupération des déchets d'équipements électriques et électroniques, afin de réduire tout effet potentiel des équipements électriques et électroniques sur l'environnement et la santé en raison de la présence possible de substances dangereuses dans ces équipements. Pour plus d'informations sur les équipements électriques et électroniques, consultez le site <http://www.lenovo.com/lenovo/environment>.

Die WEEE-Kennzeichnung gilt nur in Ländern der Europäischen Union und in Norwegen. Geräte werden gemäß der Richtlinie 2002/96/EC der Europäischen Union über Elektro- und Elektronikaltgeräte (WEEE) gekennzeichnet. Die Richtlinie regelt die Rückgabe und Wiederverwertung von Altgeräten innerhalb der Europäischen Union. Mit dieser Kennzeichnung versehene Altgeräte dürfen gemäß dieser Richtlinie nicht weggeworfen werden, sondern müssen zurückgegeben werden. Anwender von Elektro- und Elektronikgeräten mit der WEEE-Kennzeichnung dürfen diese gemäß Annex IV der WEEE-Richtlinie nach ihrem Gebrauch nicht als allgemeinen Hausmüll entsorgen. Stattdessen müssen diese Geräte im verfügbaren Sammelsystem zurückgegeben werden und damit einem Recycling- oder Wiederherstellungsprozess zugeführt werden, bei dem mögliche Auswirkungen der Geräte auf die Umwelt und den menschlichen Organismus aufgrund gefährlicher Substanzen minimiert werden. Weitere Informationen zur Entsorgung von Elektro- und Elektronikaltgeräten finden Sie unter der Adresse:
<http://www.lenovo.com/lenovo/environment>.

La marca WEEE se aplica sólo a los países pertenecientes a la Unión Europea (UE) y a Noruega. Los aparatos se etiquetan conforme a la Directiva Europea 2002/96/EC relativa a los residuos de equipos eléctricos y electrónicos (WEEE). La directiva determina el marco para devolver y reciclar los aparatos usados según sea aplicable en toda la Unión Europea. Esta etiqueta se aplica a varios productos para indicar que el producto no se va a desechar, sino que va ser reclamado por esta Directiva, una vez termine su ciclo de vida. Los usuarios de

los equipos eléctricos y electrónicos (EEE) con la marca WEEE por el Anexo IV de la Directiva WEEE no deben tratar los EEE como desperdicios municipales no clasificados, una vez terminado su ciclo de vida, sino que deben utilizar el marco de recogida disponible para devolver, reciclar y recuperar los WEEE y minimizar los posibles efectos de los EEE en el medio ambiente y en la salud debidos a la presencia de sustancias peligrosas. Para obtener información adicional acerca de WEEE consulte el sitio:
<http://www.lenovo.com/lenovo/environment>.

Le informazioni su WEEE si applicano solo ai paesi dell'Unione Europea (UE) e alla Norvegia. Gli apparecchi vengono etichettati in base alla Direttiva europea 2002/96/EC relativa a WEEE (waste electrical and electronic equipment). La direttiva stabilisce la struttura per la restituzione ed il riciclaggio degli apparecchi utilizzati applicabile in tutte l'Unione Europea. Questa etichetta si applica a diversi prodotti al fine di indicare che tali prodotti non devono essere eliminati ma riciclati al termine del loro ciclo di utilizzo. Gli utenti EEE (electrical and electronic equipment) con contrassegno WEEE per Annex IV della direttiva WEEE non devono smaltire l'EEE come rifiuto municipale non ordinato, ma utilizzare la struttura di raccolta disponibile per la restituzione, il riciclo ed il recupero di WEEE e ridurre i potenziali effetti dell'EEE sull'ambiente e sulle persone a causa della presenza di sostanze nocive. Per ulteriori informazioni su WEEE, andare all'indirizzo:
<http://www.lenovo.com/lenovo/environment>.

A marca REEE (Resíduos de Equipamentos Eléctricos e Electrónicos) aplica-se apenas aos Estados-Membros da União Europeia (UE) e à Noruega. Os aparelhos eléctricos deverão ser identificados em conformidade com a Directiva Europeia 2002/96/CE relativa a REEE (Resíduos de Equipamentos Eléctricos e Electrónicos). A Directiva determina o enquadramento normativo relativamente à devolução e reciclagem de aparelhos eléctricos utilizados, conforme aplicável no espaço da União Europeia. Esta etiqueta deverá ser aposta em diversos produtos para indicar que os mesmos não poderão ser deitados fora mas sim recuperados no final da respectiva vida útil, de acordo com a referida Directiva. Os utilizadores de equipamentos eléctricos e electrónicos (EEE) com a marca REEE em conformidade com o Anexo IV da Directiva REEE não poderão deitar fora os EEE no final da respectiva vida útil como lixo municipal não separado, devendo antes utilizar a estrutura de recolha que lhes tenha sido disponibilizada para efeitos de devolução, reciclagem e recuperação de REEE, por forma a minimizar potenciais efeitos dos EEE sobre o ambiente e saúde pública resultantes da presença de substâncias perigosas. Para mais informações sobre REEE (Resíduos de Equipamento Eléctrico e Electrónico), visite:
<http://www.lenovo.com/lenovo/environment>.

Het WEEE-merkteken geldt alleen voor landen binnen de Europese Unie (EU) en Noorwegen. Apparaten worden van een merkteken voorzien overeenkomstig Europese Richtlijn 2002/96/EC inzake afgedankte elektrische

en elektronische apparatuur (waste electrical and electronic equipment, WEEE). Deze richtlijn bepaalt het raamwerk voor het retourneren en recyclen van gebruikte apparatuur, zoals van toepassing binnen de Europese Unie. Dit merkteken wordt aangebracht op diverse producten om aan te geven dat het product in kwestie niet dient te worden weggegooid, maar dat het aan het eind van de levenscyclus krachtens deze Richtlijn dient te worden gereturneerd. Gebruikers van elektrische en elektronische apparaten (EEE) welke zijn voorzien van het WEEE-merkteken zijn gehouden aan Annex IV van de WEEE Richtlijn en mogen gebruikte EEE niet weggooien als ongesorteerd afval, maar dienen gebruik te maken van het inzamelproces voor het teruggeven, recyclen en terugwinnen van WEEE dat voor hen beschikbaar is, en dienen de mogelijke effecten die EEE ten gevolge van de aanwezigheid van schadelijke stoffen kunnen hebben op het milieu en de volksgezondheid, tot een minimum te beperken. Voor meer informatie over WEEE gaat u naar: <http://www.lenovo.com/lenovo/environment>.

WEEE-mærkningerne gælder kun for lande i EU samt Norge. Udstyr er mærket i henhold til Direktiv 2002/96/EC om affald af elektrisk og elektronisk udstyr (WEEE). Direktivet regulerer rammerne for returnering og genbrug af brugt udstyr i EU. Dette mærke sættes på forskellige produkter for at angive, at produktet ifølge direktivet ikke må smides bort, men skal genbruges eller genindvindes. Brugere af elektrisk og elektronisk udstyr (EEE), som er mærket i henhold til Bilag IV i WEEE-direktivet, må ikke bortskaffe EEE sammen med usorteret husholdningsaffald, men benytte de returnerings- og indsamlingsordninger, der står til rådighed for dem med henblik på genbrug, genvinding og andre former for nyttiggørelse samt minimering af de potentielle virkninger for miljøet og menneskers sundhed af tilstedeværelsen af farlige stoffer. Der er flere oplysninger om WEEE på adressen <http://www.lenovo.com/lenovo/environment>.

Sähkö- ja elektroniikkalaiteromu (Waste electrical and electronic equipment, WEEE)-merkintä koskee vain Euroopan unionin (EU) jäsenmaita ja Norjaa. Sähkö- ja elektroniikkalaitteet merkitään Euroopan parlamentin ja neuvoston direktiivin 2002/96/EY mukaisesti. Kyseinen direktiivi määrittää Euroopan Unionin alueella käytössä olevat palautus- ja kierrätyskäytännöt. WEEE-merkintä laitteessa osoittaa, että direktiivin ohjeiden mukaan tuotetta ei tulisi hävittää sen elinkaaren päässä, vaan sen sijaan se on kierrätettävä. Käyttäjien, joiden sähkö- ja elektroniikkalaitteissa on tämä sähkö- ja elektroniikkalaiteromun direktiivin liitteen IV mukainen merkintä, tulee kierrättää kyseiset laitteet käytettävissä olevien resurssien mukaan, varmistaen sen, että niistä tai niissä käytetyistä materiaaleista ei aiheudu haittaa ympäristölle tai ihmisten terveydelle. Sähkö- ja elektroniikkalaitteita ei saa hävittää sekajätteen mukana. Lisätietoa sähkö- ja elektroniikkalaiteromun kierrättämisestä on WWW-sivustossa <http://www.lenovo.com/lenovo/environment>.

WEEE-merket gjelder bare for land i Den europeiske union (EU) og Norge. Utstyr merkes i henhold til EU-direktiv 2002/96/EF om avfall fra elektrisk og elektronisk utstyr (WEEE). Direktivet fastsetter rammene for retur og resirkulering av brukt utstyr innenfor EU. Dette merket benyttes på forskjellige produkter for å angi at produktet ikke må kastes, men må behandles i henhold til dette direktivet ved slutten av produktets levetid. Brukere av elektrisk og elektronisk utstyr (EEE) som er merket med WEEE-merket ifølge vedlegg IV i WEEE-direktivet, må ikke kaste utstyret som usortert husholdningsavfall, men må bruke de tilgjengelige innsamlingssystemene for retur, resirkulering og gjenvinning av kassert elektrisk og elektronisk utstyr for å redusere en eventuell skadelig virkning av elektrisk og elektronisk utstyr på miljø og helse, som skyldes skadelige stoffer. Du finner mer informasjon om WEEE på denne adressen: <http://www.lenovo.com/lenovo/environment>.

WEEE-märkningen är tillämplig enbart i EU-länderna och Norge. Apparater märks i enlighet med EU-direktiv 2002/96/EG om avfall som utgörs av eller innehåller elektriska eller elektroniska produkter (WEEE). I direktivet fastställs det ramverk för återlämnande och materialåtervinning av uttjänta apparater som gäller inom hela Europeiska unionen. Etiketten sätts fast på produkter av olika slag för att ange att produkten inte får kastas, utan måste återtas i slutet av produktcykeln i enlighet med direktivet. Användare av elektrisk och elektronisk utrustning med WEEE-märkning enligt bilaga IV till WEEE-direktivet får inte kassera sin uttjänta elektriska eller elektroniska utrustning som osorterat kommunalt avfall, utan måste utnyttja det tillgängliga insamlingsnätverket för återlämnande och återvinning av utrustningen och därigenom minimera riskerna för miljö och människans hälsa av utrustningens innehåll av farliga ämnen. Mer WEEE-information finns på adressen: <http://www.lenovo.com/lenovo/environment>.

Značka WEEE se týká pouze zemí Evropské Unie (EU) a Norska. Zařízení jsou označena v souladu s evropskou směrnicí 2002/96/EC, která se týká likvidace starých elektrických a elektronických zařízení (WEEE). Směrnice určuje pravidla pro vrácení a recyklaci použitých zařízení, která jsou platná v Evropské Unii. Tímto štítkem se označují různá zařízení. Označuje, že produkt nesmí být vyhozen do běžného odpadu, ale po skončení životnosti vrácen podle této směrnice. Uživatelé takovýchto zařízení označených značkou WEEE podle dodatku IV směrnice WEEE nesmí na konci životnosti vyhodit zařízení jako netříděný odpad, ale musí použít dostupnou sběrnou síť, aby bylo zařízení recyklováno a aby byly minimalizovány možné dopady zařízení na prostředí a zdraví lidí (zařízení může obsahovat nebezpečné látky). Další informace o značce WEEE naleznete na webových stránkách: <http://www.lenovo.com/lenovo/environment>.

Το σήμα WEEE χρησιμοποιείται μόνο σε χώρες τις Ευρωπαϊκής Ένωσης και στη Νορβηγία. Στις συσκευές τοποθετούνται ετικέτες που αφορούν την απόρριψη ηλεκτρικών και ηλεκτρονικών εξαρτημάτων σύμφωνα με την Ευρωπαϊκή Οδηγία 2002/96/EC. Η Οδηγία αυτή καθορίζει το πλαίσιο για την επιστροφή και την ανακύκλωση χρησιμοποιημένων συσκευών που ισχύει σε όλη την Ευρωπαϊκή Ένωση. Η ετικέτα τοποθετείται σε διάφορα προϊόντα για να υποδείξει ότι μετά το μόνιμο τερματισμό της χρήσης του το προϊόν, σύμφωνα με την Οδηγία, πρέπει να ανακυκλωθεί και όχι να απορριφθεί. Οι χρήστες ηλεκτρικών και ηλεκτρονικών εξαρτημάτων (electrical and electronic equipment - EEE) που φέρουν το σήμα WEEE σύμφωνα με το Παράρτημα IV της εν λόγω Οδηγίας, δεν πρέπει να απορρίπτουν τα εξαρτήματα αλλά να χρησιμοποιούν το διαθέσιμο πλαίσιο συλλογής για την επιστροφή, ανακύκλωση και ανάκτηση των εξαρτημάτων με σκοπό την ελαχιστοποίηση δυνητικών επιρροών στο περιβάλλον και την ανθρώπινη υγεία εξαιτίας της παρουσίας επικίνδυνων ουσιών στα εξαρτήματα αυτά.

Για περισσότερες πληροφορίες σχετικά με τις κατάλληλες ενέργειες συλλογής και κατεργασίας ηλεκτρικών και ηλεκτρονικών συσκευών και εξαρτημάτων, επισκεφθείτε την ιστοσελίδα:

<http://www.lenovo.com/lenovo/environment>.

A WEEE jelzés csak az EU tagállamaira és Norvégiára vonatkozik. A berendezések a leselejtezett elektromos és elektronikus berendezésekre (WEEE) vonatkozó 2002/96/EC számú EU direktívának való megfelelést tanúsító címkével vannak ellátva. A direktíva a használt berendezések visszavételének és újrahasznosításának keretrendszerét határozza meg az Európai Unión belül. A különböző termékeken látható címke azt jelenti, hogy a terméket az élettartamának végén nem szabad kidobni, hanem a direktívának megfelelően kell visszanyerni. A WEEE jelzésű elektromos és elektronikai felszerelések (EEE) felhasználóinak, a WEEE direktíva IV. függelékének megfelelően nem szabad vegyes házi szemétként kidobniuk az eszközöket (EEE), hanem a vásárlók számára rendelkezésre álló, meglévő begyűjtési keretrendszert felhasználnak kell gondoskodniuk az elektromos hulladék (WEEE) visszajuttatásáról és újrahasznosításáról, valamint minimalizálniuk kell az eszközök (EEE) lehetséges hatásait a környezetre és az emberi egészségre, a veszélyek megelőzése érdekében.

További WEEE információk:

[Http://www.lenovo.com/lenovo/environment](http://www.lenovo.com/lenovo/environment)

WEEE マークは EU 諸国とノルウェーにのみ適用されます。この機器には、EU 諸国に対する廃電気電子機器指令 2002/96/EC (WEEE) のラベルが貼られています。この指令は、EU 諸国に適用する使用済み機器の回収とリサイクルの骨子を定めています。このラベルは、使用済みになった時に指令に従って適正な処理をする必要があることを知らせるために種々の製品に貼られています。

WEEE 指令の付則 (Annex IV) 規則によりマークされた電気/電子機器 (EEE) の使用者は、使用済みの電気・電子機器を地方自治体の無分別ゴミとして廃棄することは許されず、機器に含まれる有害物質が環境や人体へ与える悪影響を最小に抑えるためにお客様が利用可能な廃電気・電子機器の返却、リサイクル、あるいは再生のための回収方法を利用しなければなりません。WEEE の詳細については、次の Web サイトを参照してください。 [Http://www.lenovo.com/lenovo/environment](http://www.lenovo.com/lenovo/environment)

Appendix D. Electronic emission notices

The following information refers to the 65W Ultraportable AC Adapter.

Federal Communications Commission (FCC) Declaration of Conformity

This equipment has been tested and found to comply with the limits for a Class B digital device, pursuant to Part 15 of the FCC Rules. These limits are designed to provide reasonable protection against harmful interference in a residential installation. This equipment generates, uses, and can radiate radio frequency energy and, if not installed and used in accordance with the instructions, may cause harmful interference to radio communications. However, there is no guarantee that interference will not occur in a particular installation. If this equipment does cause harmful interference to radio or television reception, which can be determined by turning the equipment off and on, the user is encouraged to try to correct the interference by one or more of the following measures:

- Reorient or relocate the receiving antenna.
- Increase the separation between the equipment and receiver.
- Connect the equipment into an outlet on a circuit different from that to which the receiver is connected.
- Consult an authorized dealer or service representative for help.

Lenovo is not responsible for any radio or television interference caused by using other than recommended cables or connectors or by unauthorized changes or modifications to this equipment. Unauthorized changes or modifications could void the user's authority to operate the equipment.

This device complies with Part 15 of the FCC Rules. Operation is subject to the following two conditions: (1) this device may not cause harmful interference, and (2) this device must accept any interference received, including interference that may cause undesired operation.

Responsible party:

Lenovo (United States) Incorporated
One Manhattanville Road
Purchase, New York 10577
Telephone: (919) 254-0532



Tested To Comply
With FCC Standards

FOR HOME OR OFFICE USE

Industry Canada Class B emission compliance statement

This Class B digital apparatus complies with Canadian ICES-003.

Avis de conformité à la réglementation d'Industrie Canada

Cet appareil numérique de la classe B est conforme à la norme NMB-003 du Canada.

EU-EMC Directive (89/336/EG) EN 55022 class B Statement of Compliance

Deutschsprachiger EU Hinweis:

Hinweis für Geräte der Klasse B EU-Richtlinie zur Elektromagnetischen Verträglichkeit Dieses Produkt entspricht den Schutzanforderungen der EU-Richtlinie 89/336/EWG zur Angleichung der Rechtsvorschriften über die elektromagnetische Verträglichkeit in den EU-Mitgliedsstaaten.

und hält die Grenzwerte der EN 55022 Klasse B ein.

Um dieses sicherzustellen, sind die Geräte wie in den Handbüchern beschrieben zu installieren und zu betreiben. Des Weiteren dürfen auch nur von der Lenovo empfohlene Kabel angeschlossen werden. Lenovo übernimmt keine Verantwortung für die Einhaltung der Schutzanforderungen, wenn das Produkt ohne Zustimmung der Lenovo verändert bzw. wenn Erweiterungskomponenten von Fremdherstellern ohne Empfehlung der Lenovo gesteckt/eingebaut werden.

Deutschland: Einhaltung des Gesetzes über die elektromagnetische Verträglichkeit von Geräten Dieses Produkt entspricht dem "Gesetz über die elektromagnetische Verträglichkeit von Geräten (EMVG)". Dies ist die Umsetzung der EU-Richtlinie 89/336/EWG in der Bundesrepublik Deutschland.

Zulassungsbescheinigung laut dem Deutschen Gesetz über die elektromagnetische Verträglichkeit von Geräten (EMVG) vom 18. September 1998 (bzw. der EMC EG Richtlinie 89/336) für Geräte der Klasse B Dieses Gerät ist berechtigt, in Übereinstimmung mit dem Deutschen EMVG das EG-Konformitätszeichen - CE - zu führen.

Verantwortlich für die Konformitätserklärung nach Paragraf 5 des EMVG ist die Lenovo (Deutschland) GmbH, Pascalstr. 100, D-70569 Stuttgart. Informationen in Hinsicht EMVG Paragraf 4 Abs. (1) 4:

Das Gerät erfüllt die Schutzanforderungen nach EN 55024 und EN 55022 Klasse B.)

European Union - Compliance to the Electromagnetic Compatibility Directive

This product is in conformity with the protection requirements of EU Council Directive 89/336/ECC on the approximation of the laws of the Member States relating to electromagnetic compatibility. Lenovo cannot accept responsibility for any failure to satisfy the protection requirements resulting from a non-recommended modification of the product, including the fitting of option cards from other manufacturers.

This product has been tested and found to comply with the limits for Class B Information Technology Equipment according to European Standard EN 55022. The limits for Class B equipment were derived for typical residential environments to provide reasonable protection against interference with licensed communication devices.

Avis de conformité à la directive de l'Union Européenne

Le présent produit satisfait aux exigences de protection énoncées dans la directive 89/336/CEE du Conseil concernant le rapprochement des législations des Etats membres relatives à la compatibilité électromagnétique. Lenovo décline toute responsabilité en cas de non-respect de cette directive résultant d'une modification non recommandée du produit, y compris l'ajout de cartes en option non Lenovo.

Ce produit respecte les limites des caractéristiques d'immunité des appareils de traitement de l'information définies par la classe B de la norme européenne EN 55022 (CISPR 22). La conformité aux spécifications de la classe B offre une garantie acceptable contre les perturbations avec les appareils de communication agréés, dans les zones résidentielles.

Union Europea - Normativa EMC

Este producto satisface los requisitos de protección del Consejo de la UE, Directiva 89/336/CEE en lo que a la legislatura de los Estados Miembros sobre compatibilidad electromagnética se refiere.

Lenovo no puede aceptar responsabilidad alguna si este producto deja de satisfacer dichos requisitos de protección como resultado de una modificación no recomendada del producto, incluyendo el ajuste de tarjetas de opción que no sean Lenovo.

Este producto ha sido probado y satisface los límites para Equipos Informáticos Clase B de conformidad con el Estándar Europeo EN 55022. Los límites para los equipos de Clase B se han establecido para entornos residenciales típicos a fin de proporcionar una protección razonable contra las interferencias con dispositivos de comunicación licenciados.

Unione Europea - Directiva EMC (Conformidad electromagnética)

Questo prodotto è conforme alle normative di protezione ai sensi della Direttiva del Consiglio dell'Unione Europea 89/336/CEE sull'armonizzazione legislativa degli stati membri in materia di compatibilità elettromagnetica.

Lenovo non accetta responsabilità alcuna per la mancata conformità alle normative di protezione dovuta a modifiche non consigliate al prodotto, compresa l'installazione di schede e componenti di marca diversa da Lenovo.

Le prove effettuate sul presente prodotto hanno accertato che esso rientra nei limiti stabiliti per le apparecchiature di informatica Classe B ai sensi del Norma Europea EN 55022. I limiti delle apparecchiature della Classe B sono stati stabiliti al fine di fornire ragionevole protezione da interferenze mediante dispositivi di comunicazione in concessione in ambienti residenziali tipici.

Korea Class B Compliance

이 기기는 가정용으로 전자파 적합등록을 한 기기로서
주거지역에서는 물론 모든 지역에서 사용할 수 있습니다.

Japan VCCI Class B Compliance

この装置は、情報処理装置等電波障害自主規制協議会（VCCI）の基準に基づくクラスB情報技術装置です。この装置は、家庭環境で使用することを目的としていますが、この装置がラジオやテレビジョン受信機に近接して使用されると、受信障害を引き起こすことがあります。
取扱説明書に従って正しい取り扱いをして下さい。

Japanese statement of compliance for products less than or equal to 20 A per phase

高調波ガイドライン適合品

Appendix E. Trademarks

The following terms are trademarks of Lenovo in the United States, other countries, or both:

Lenovo
ThinkPad

IBM is a trademark of International Business Machines Corporation in the United States, other countries, or both, and is used under license.

Other company, product, or service names may be trademarks or service marks of others.

lenovo

Part Number: 40Y7712

(1P) P/N: 40Y7712

