



# NetVista N2200w Training

---

Setup, Configuration, and  
Operation of the IBM NetVista  
N2200w, Thin Client for  
Windows-based Terminal  
Standard 1.5

BSQUARE Corporation

March, 2000

# Preview

- Installation and Setup
- Terminal Configuration
- Normal Operations
- Troubleshooting

# Installation and Setup

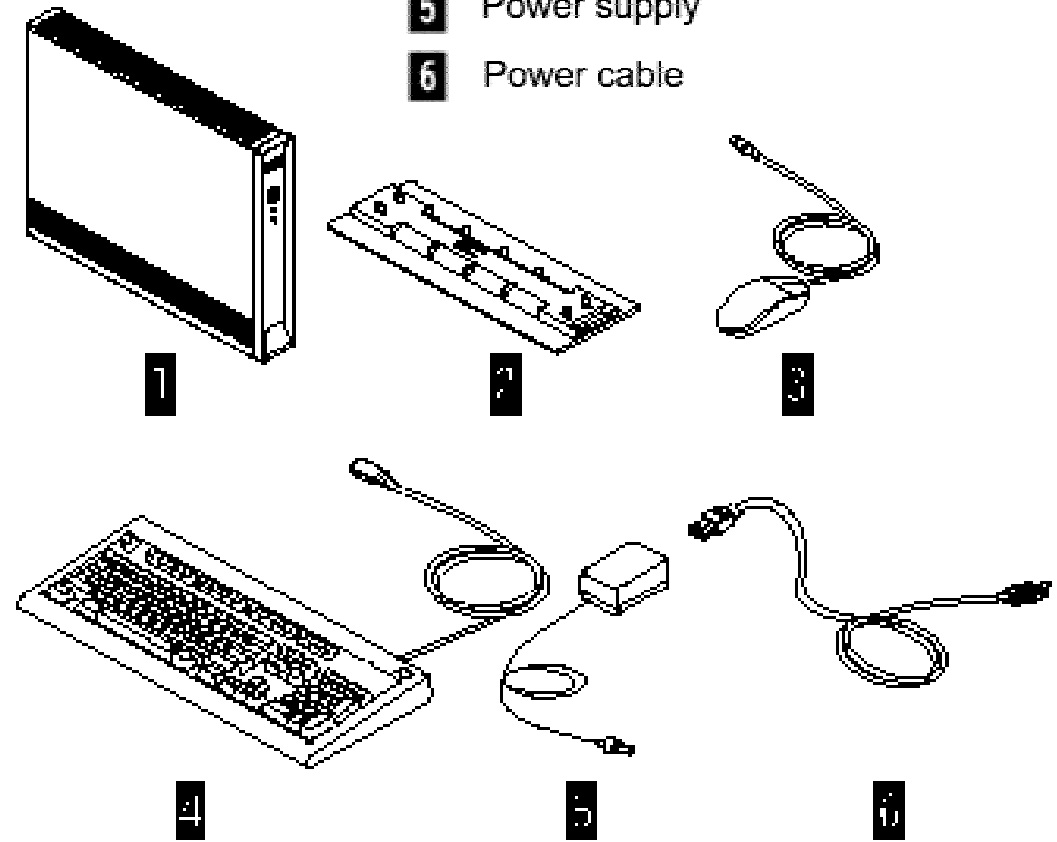
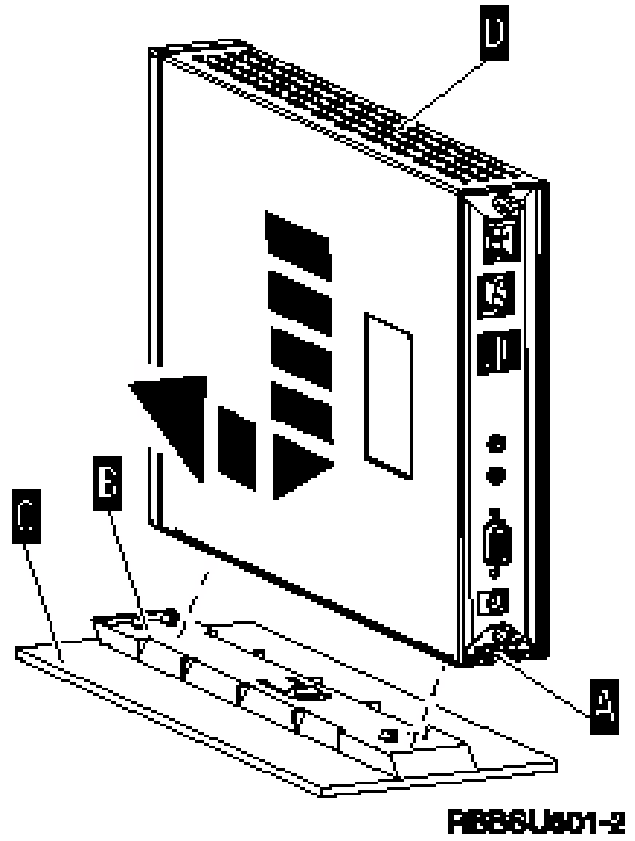
- Server Requirements
- Hardware Installation
- Setup Wizard
- Terminal Connection Manager

# Server Requirements

- WBT Requires:
  - Microsoft Windows NT 4.0 Terminal Server Edition, or
  - Windows 2000 Server
  - A word about capacity planning
- The NetVista N2200w also emulates terminals

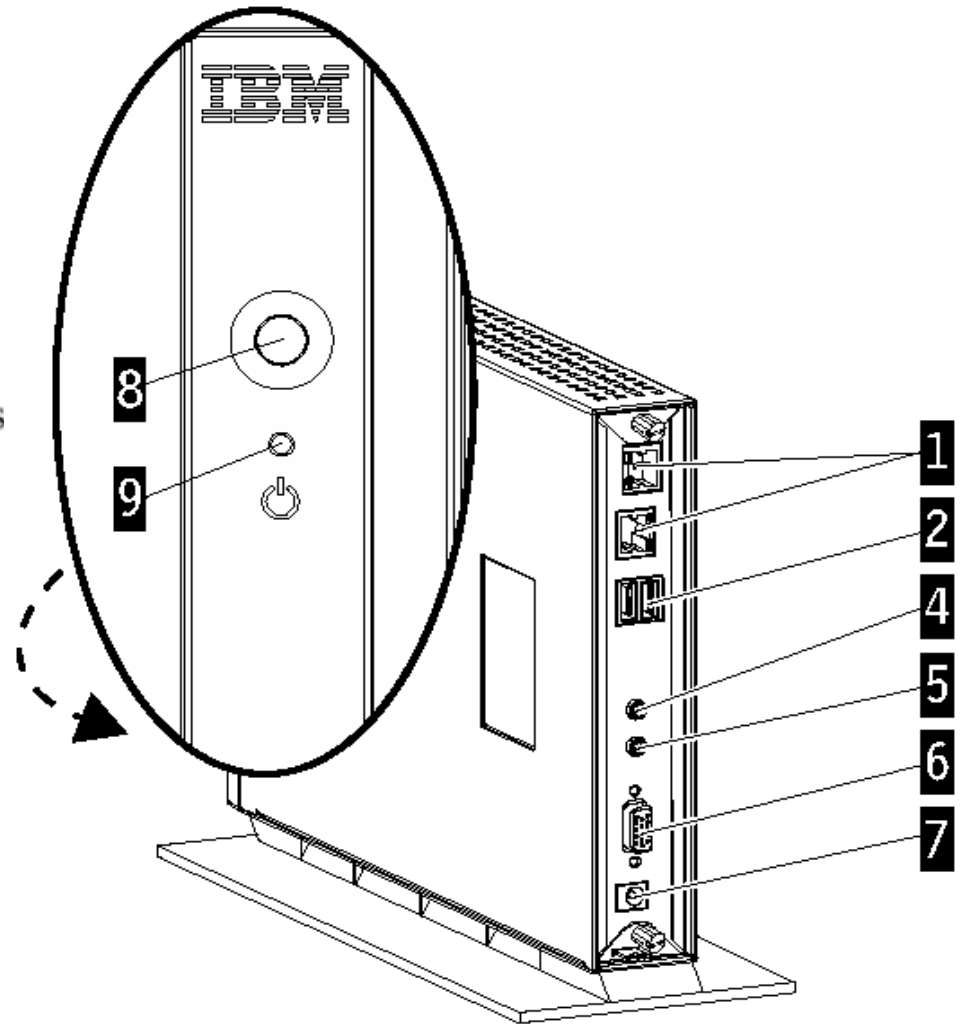
# Hardware

- 1** Logic unit
- 2** Base
- 3** Mouse
- 4** USB Keyboard
- 5** Power supply
- 6** Power cable

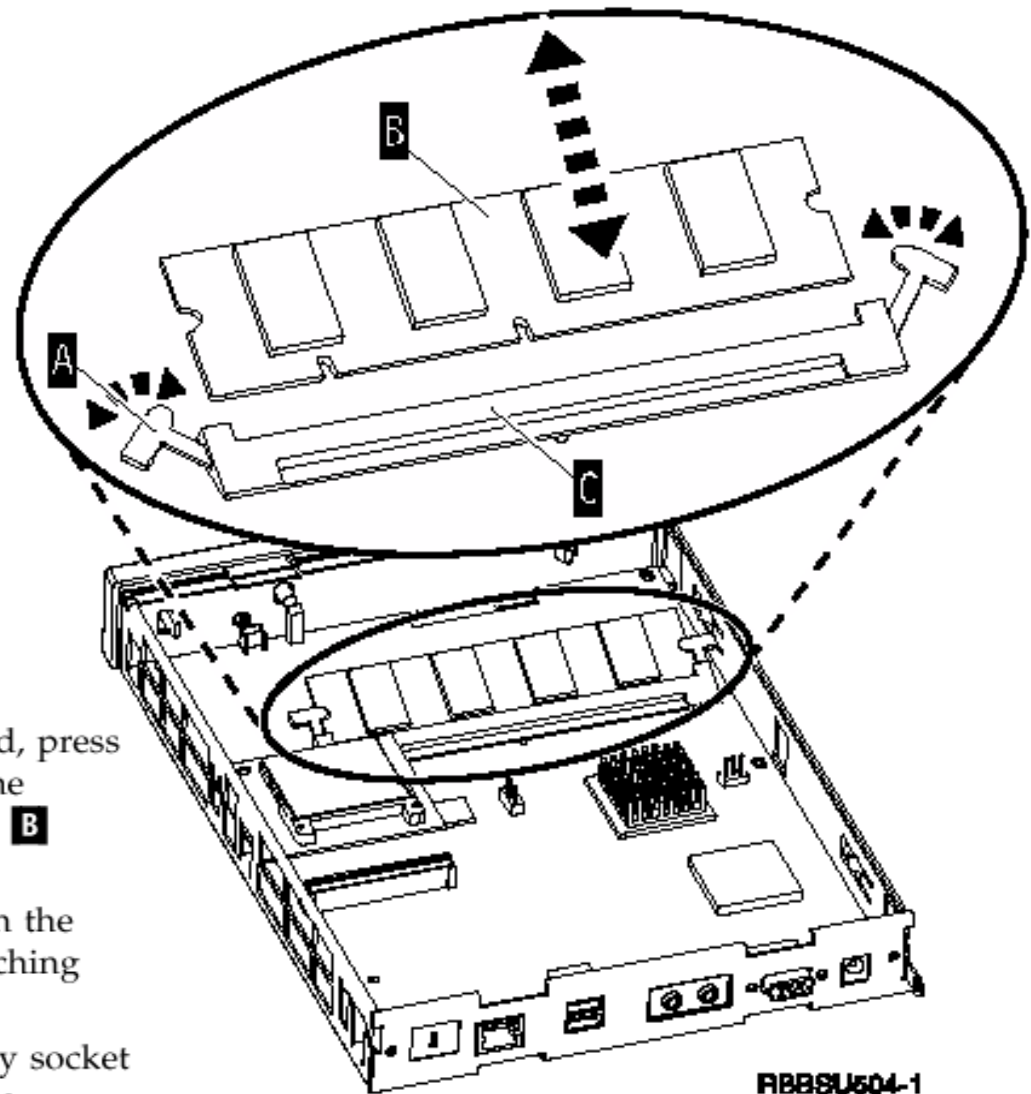


# Peripherals

- 1** Network cable
- 2** USB keyboard and other USB devices
- 3** Mouse (connects to keyboard)
- 4** Headphones
- 5** Microphone
- 6** Monitor
- 7** Power supply and power cable

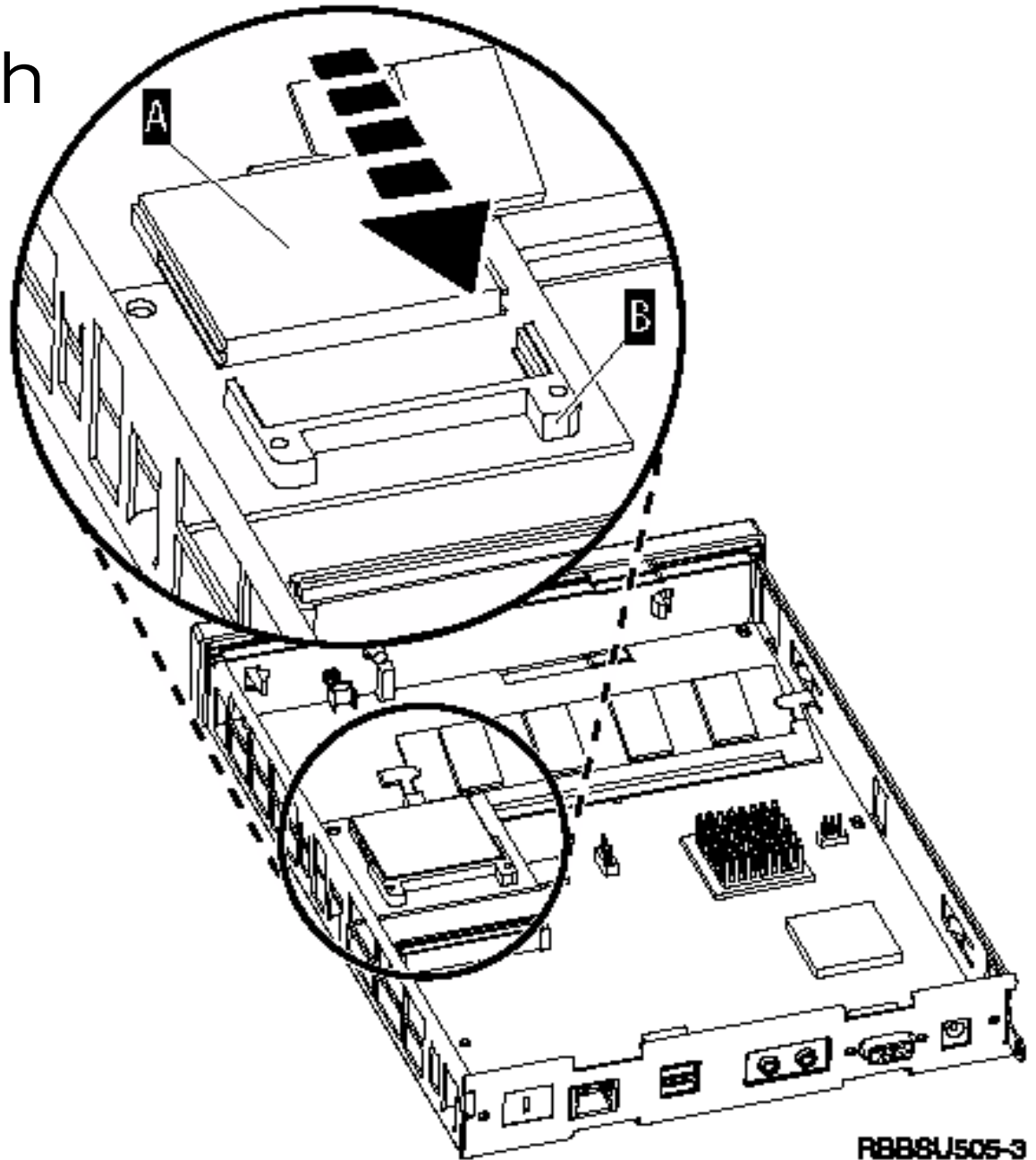


# Memory Card



1. To remove a previously installed memory card, press the tabs **A**, that are located at each end of the memory card **B**, out until the memory card **B** comes out of the memory socket **C**.
2. To install a memory card, align the notches on the bottom of the memory card **B** with the matching notches on the memory socket **C**.
3. Press the memory card down into the memory socket **C**. The tabs **A** should swing in, holding the memory card in place.

# Compact Flash





# The Setup Wizard

- Displays at first time power up, or after resetting terminal to factory defaults
- Set IP information, static or by DHCP
- Select DNS or WINS for client name resolution (optional)
- Select and test resolution and refresh rate
- Select printer and port (optional)

# Terminal Connection Manager

- TCM dialog appears at power on
  - CTRL+ALT+END from session to TCM
- Connect to server using existing connection
- Disconnect (logoff) from server
- Create a new connection to server
- Edit or delete an existing connection
- Set a default startup connection
- Set to auto connect at startup

# Create New Terminal Connection

- Specify server name
- Specify Username, Password, Domain
- Choose optional automatic logon
- Choose optional slow (modem) connection
- Choose to specify a working directory
- Choose to automatically launch an application when you connect

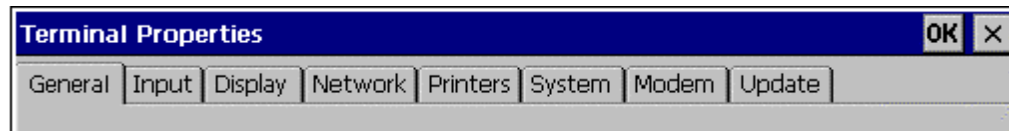
# Simplest End User Scenario

- User powers on the terminal
  - Automatically connects to server using default connection
  - Automatically logs on to server
  - Automatically runs task-oriented application
  - Automatically sets working directory for app
- User begins working

# Terminal Configuration

- **F2** from opens the Terminal Properties window
  - From the Terminal Connection Manager
  - **CTRL+ALT+END** opens the TCM (aka WBT Shell)
- After making configuration changes, OK restarts system

# Terminal Properties Tabs



## Standard Microsoft WBT Tabs

- **General:** Product information and factory default setting
- **Input:** Keyboard language selections, character repeat
- **Display:** Resolution, refresh rate, and screen saver
- **Network:** IP address settings

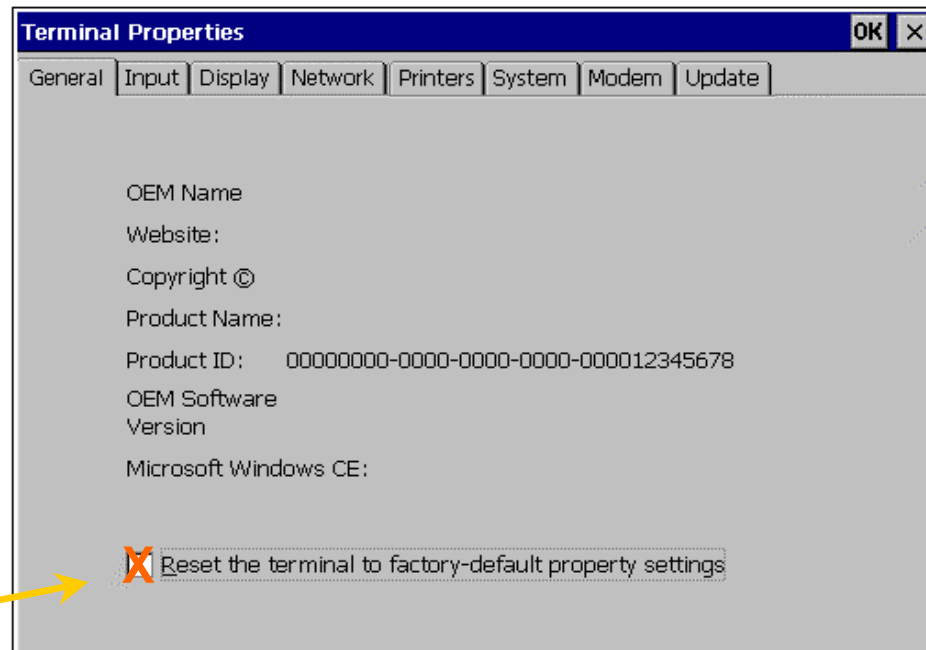
## ■ Custom NetVista N2200w Tabs

- **Printer:** Adding/deleting printers and editing details
- **System:** System memory usage statistics
- **Modem:** Modem configuration settings and activation
- **Update:** Updating your client terminal

# Reset NetVista N2200w

## ■ General tab

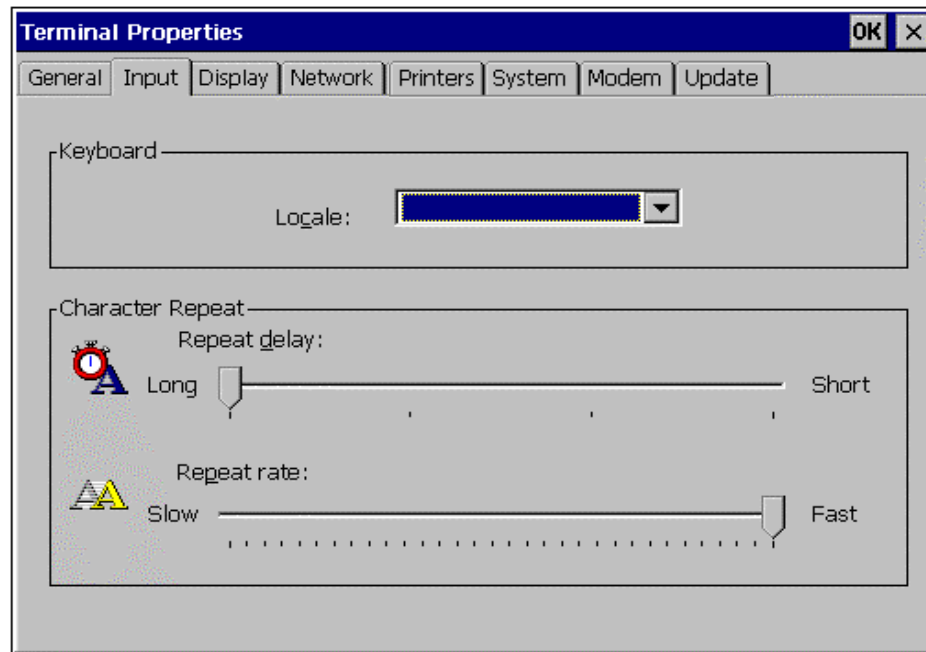
- Reset the NetVista N2200w to its original factory defaults



# Keyboard Settings

## ■ Input tab

- Adjust the character repeat delays and rates
- Change the keyboard language settings



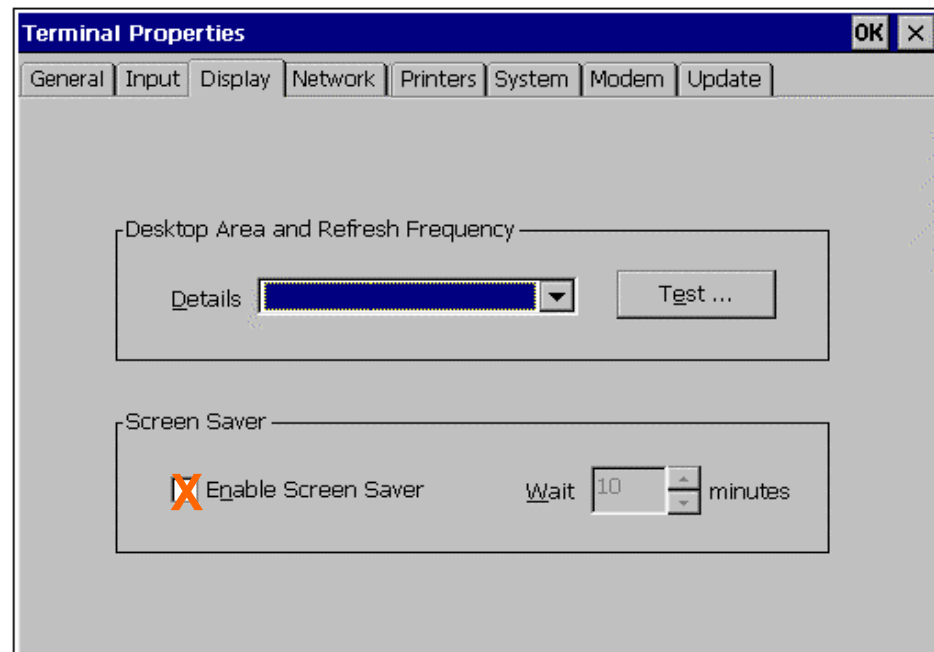


# Video Monitor Settings (1)

## ■ Display tab

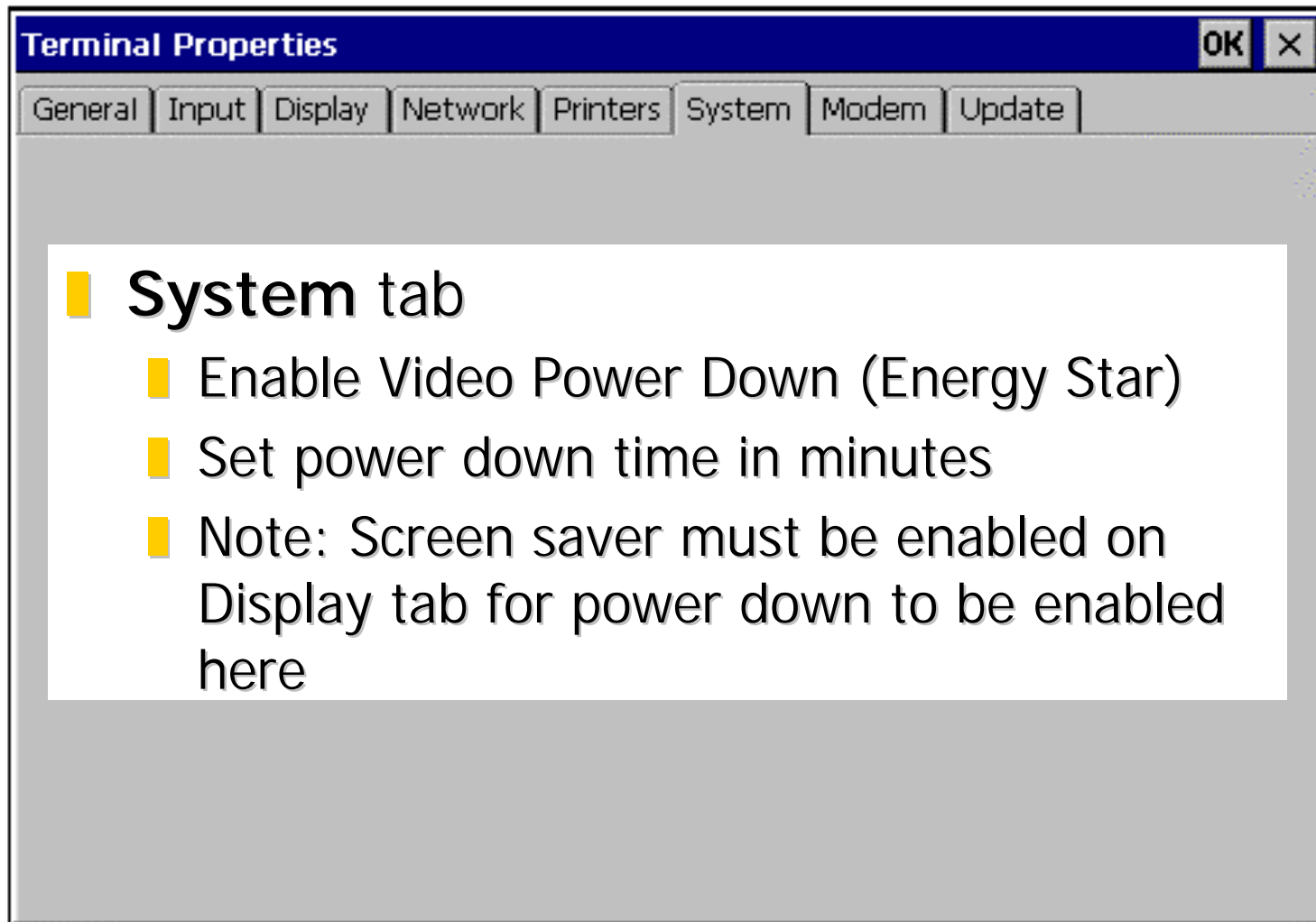
Change and test the display resolution and refresh rate

Enable a screen saver



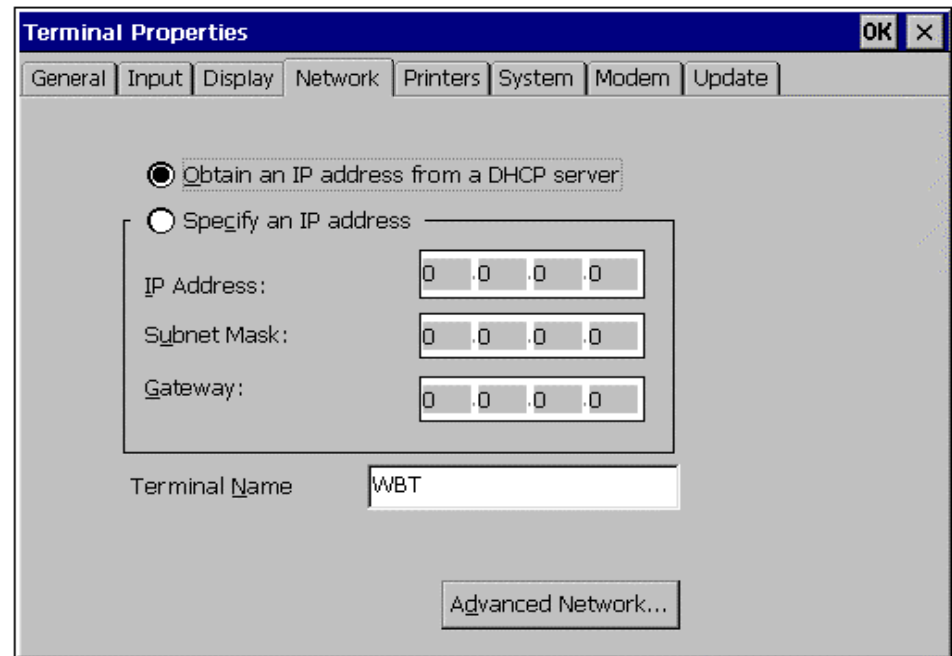
\*Note: Screen saver must be enabled here for video power down to be enabled on Network Tab.

# Video Monitor Settings (2)

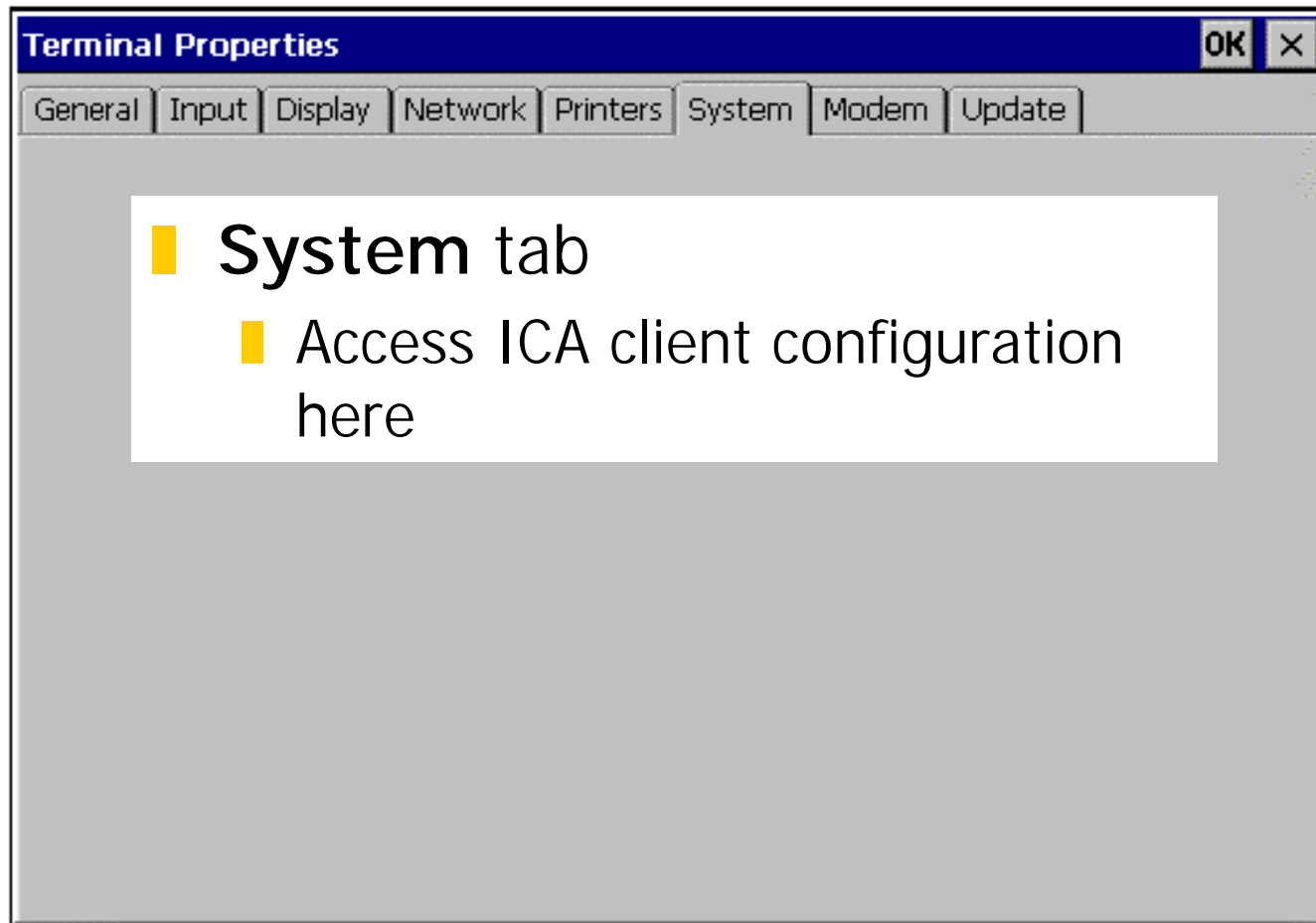


# Network Settings

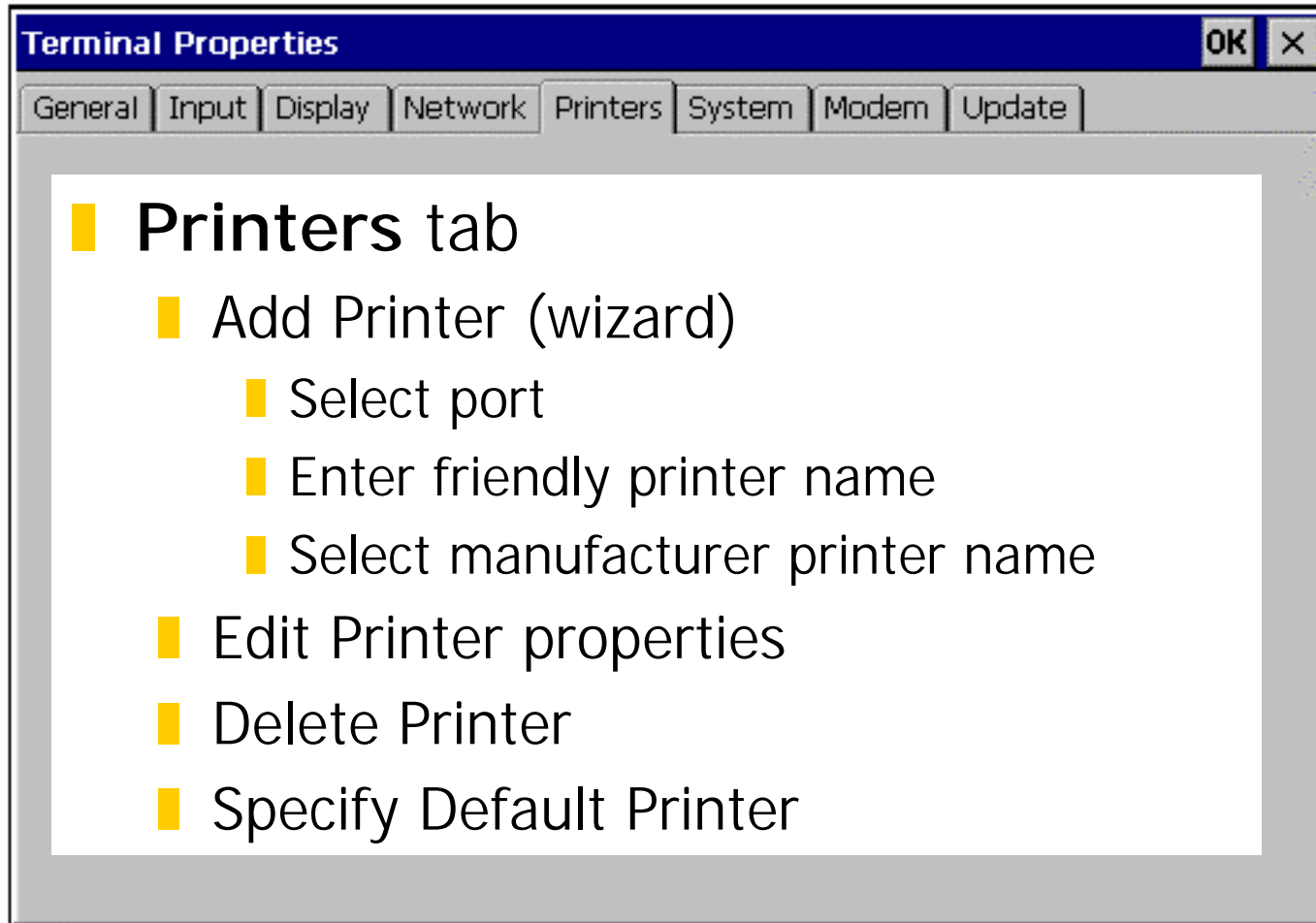
- **Network** tab
  - Obtain IP address from server
  - Define a specific IP address
  - Enable DNS or WINS
  - Input a terminal name (\*required for printing)
  - Additional **Advanced Network** settings



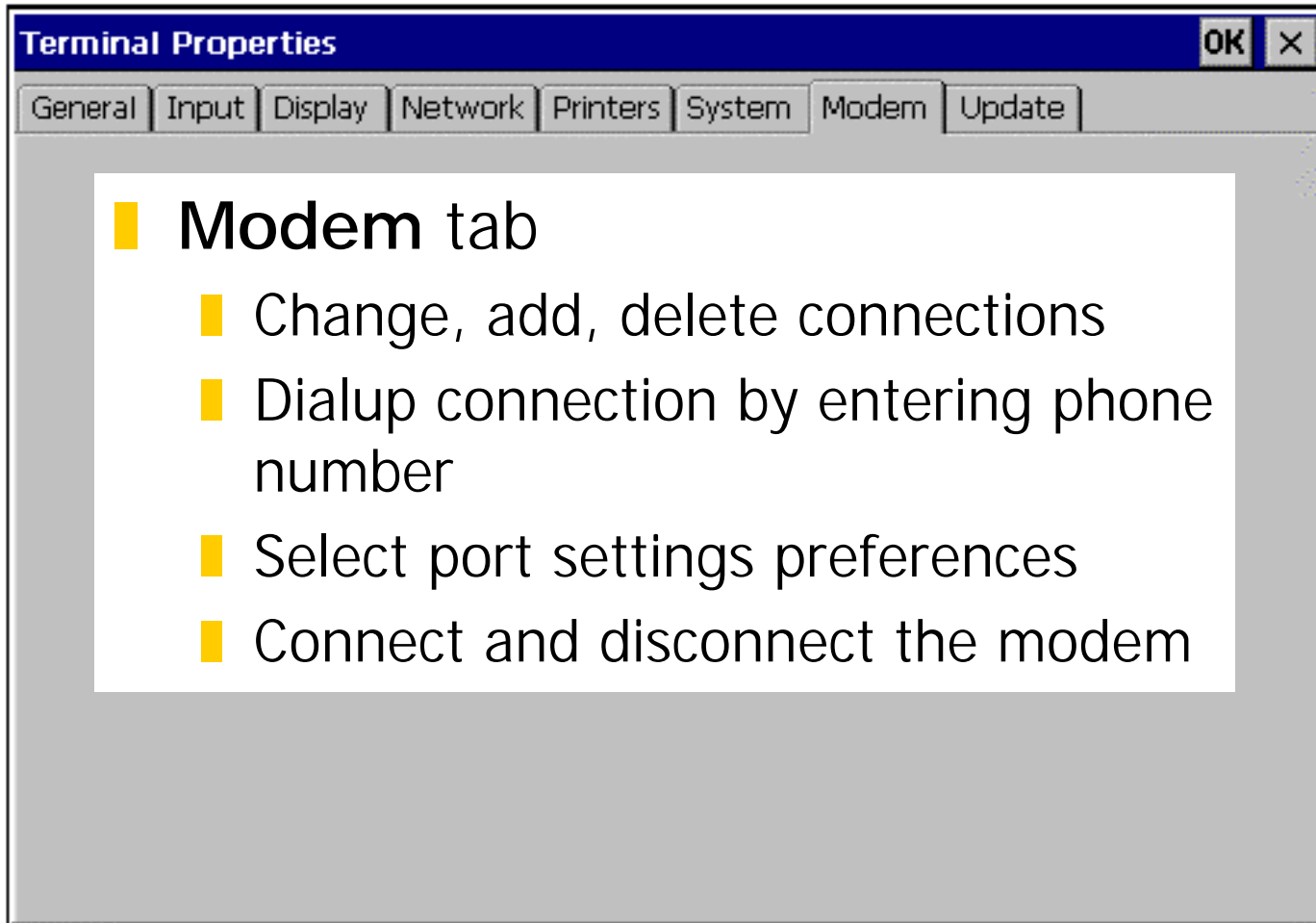
# ICA Settings



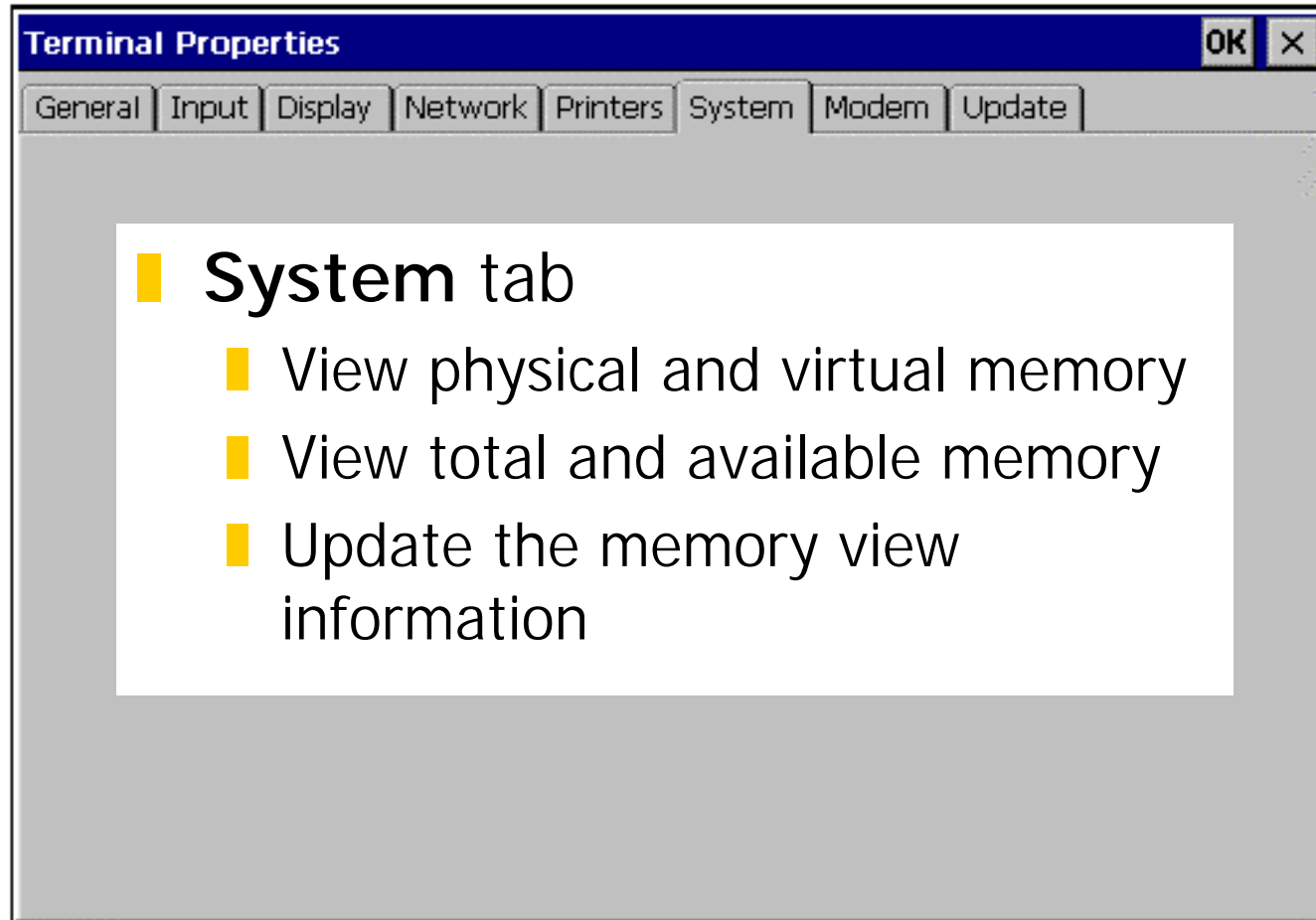
# Printer Use



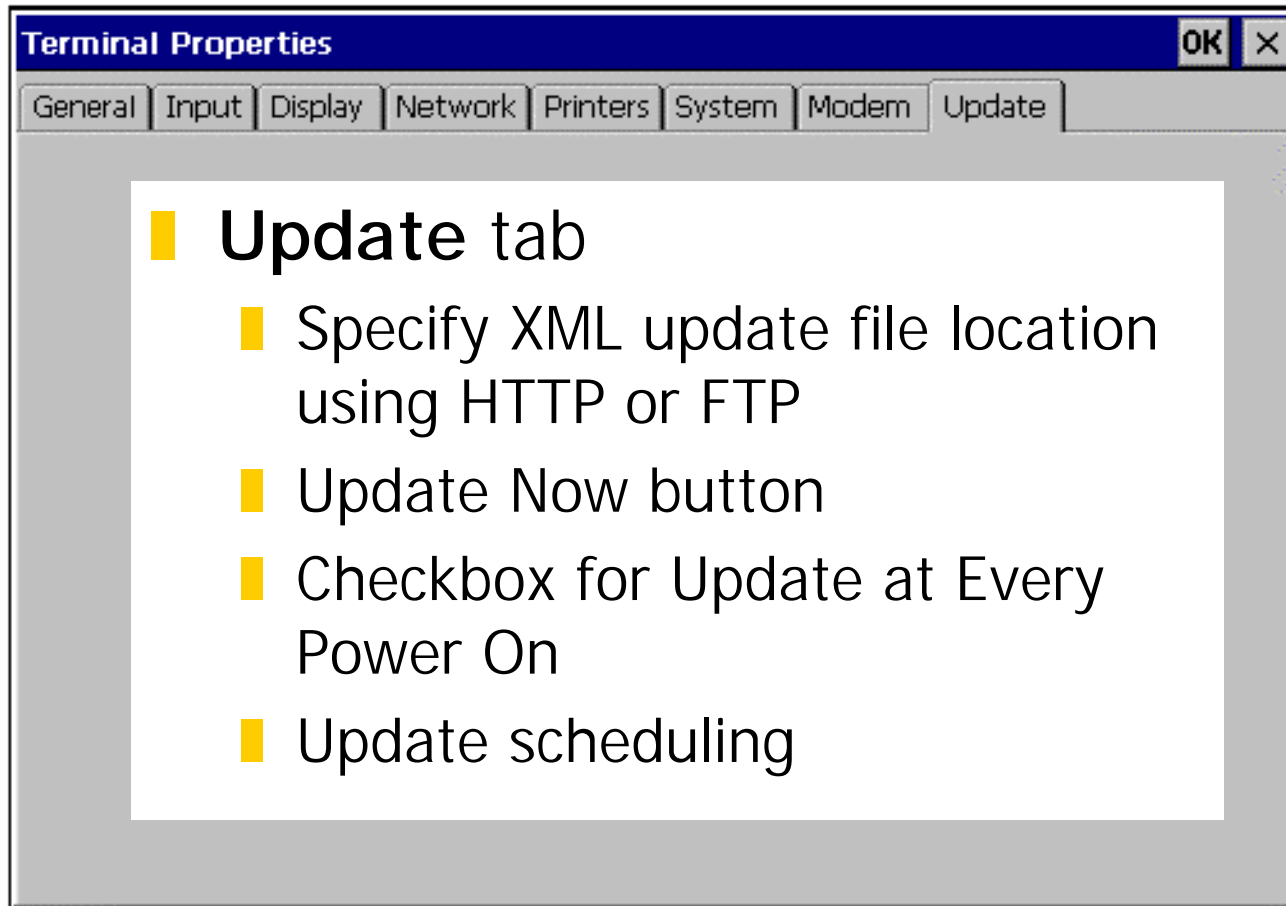
# Modem Use



# Memory Information



# Software Updates





# Running Windows Apps

- RDP Sessions
- ICA Sessions
- Switching among sessions

# Terminal Emulation

- Emulation Options
  - IBM 3270, 5250
  - ANSI-BBS
  - Digital VT-Series
  - Wyse
- Starting a Terminal Emulation Session
  - Logging on/off
  - Disconnecting
  - Switching among sessions

# NetPrint Print Server Note

- NetPrint is a third party product from FutureSoft
- Enhanced printing and print management
- Client-side is supported by the NetVista N2200w (integrated by BSQUARE)
- Server-side requires NetPrint Print Server to be installed and configured

# Troubleshooting

- This is a high-level overview of:
  - Where problems could lie
  - Problem determination strategies
  - Available front line resources

# Where problems could lie

- Hardware
- Network configuration settings
- Client configuration settings
- WBT default image problem

# Problem Determination Strategies

- Chronology: power up, boot CE, connect to server, run app, perform task, change configuration
- Software element: boot monitor, OS/OAL, RDP, ICA, application, emulation, NetPrint

# Front line resources

- IBM System Indicators
  - Audio beeps, LED indications, NSB error messages
  - Fully documented in the NetVista N2200w manual
- FutureSoft print-related error messages
  - See the help files for the optional NetPrint Server
- Few Windows CE error messages or diagnostics
  - CE has powerful debug tools at the developer level, but
  - WBT client not designed to dump technical info in the field

# Summary

- Setup Wizard
- Terminal Connection Manager
- RDP, ICA, and TE sessions
- Troubleshooting Tips

Questions?