



# *IBM Smart Card Security Kit*

OPTIONS  
*by IBM*

## **Administrator Reference Manual**

*Software for Windows 95 and 98*  
*Version 2.0*

## Copyright

Copyright © 1999 Gemplus and 1999 by International Business Machine, Inc. All Rights Reserved. Some algorithms used in this product are copyright by RSA Data Security, Inc., a Security Dynamics Company and used with its permission. No part of this work may be reproduced in any form or by any means—graphic, electronic, or mechanical—including photocopying, recording, taping, or storage in an information system, without the prior written consent of the copyright owner.

## Patents

The public key technology referred to in this guide (RSA), is licensed exclusively by RSA Data Security, Inc., a Security Dynamics Company, US Patent No 4,405,829.

Smart Cards and Smart Card Readers are patent protected by INNOVATRON and produced by GEMPLUS under license.

Patented by Bull CP8 - Patented by Innovatron.

Other patents are held by Gemplus.

## Trademarks

Security Dynamics, the Security Dynamics logo, ACE, ACE/Server, SecurID, SoftID, and WebID are registered trademarks, and ACE/Agent, ACE/Sentry, Comcrypton, Concrypton, PASSCODE, PINPAD, SecurID Protected, SecurID Ready, SecurESS, SecurPC, SecurSight, SecurSSO, and SecurVPN are trademarks, of Security Dynamics Technologies, Inc.

RC4 is a registered trademark; and, RSA SecurPC, RSA Emergency Access, and AutoCrypt are trademarks of RSA Data Security, Inc., a Security Dynamics Company.

Microsoft, MS, and MS-DOS are registered trademarks; and, Internet Explorer, Windows, Windows NT, Windows for Workgroups, and Windows 95 are trademarks of Microsoft Corporation.

Adobe and Adobe Acrobat Reader are registered trademarks of Adobe Systems Incorporated.

Netscape Navigator is a trademark of Netscape Communications.

All other products or services mentioned in this document are covered by the trademarks, service marks, or product names as designated by the companies who own or market them.

Software Version 2.0 for Windows 95 and 98.

Document Version: DOARM20Z

IBM and GEMPLUS reserve the right to change the functions and specifications of its products at any time without prior notice.

This document was prepared by GEMPLUS and IBM for both its clients and for its own internal use. The information contained herein is the property of GEMPLUS and IBM. This information shall not under any circumstances be reproduced without prior consent of both companies.

© Copyright GEMPLUS and International Business Machines, 1999.

The following paragraph does not apply to the United Kingdom or any country where such provisions are inconsistent with local law: INTERNATIONAL BUSINESS MACHINES CORPORATION PROVIDES THIS PUBLICATION “AS IS” WITHOUT WARRANTY OF ANY KIND, EITHER EXPRESS OR IMPLIED, INCLUDING, BUT NOT LIMITED TO, THE IMPLIED WARRANTIES OF MERCHANTABILITY OR FITNESS FOR A PARTICULAR PURPOSE. Some states do not allow disclaimer of express or implied warranties in certain transactions, therefore, this statement may not apply to you.

This publication could include technical inaccuracies or typographical errors. Changes are periodically made to the information herein; these changes will be incorporated in new editions of the publication. IBM may make improvements and/or changes in the product(s) and/or the program(s) described in this publication at any time.

This publication was produced in the United States of America. This publication was developed for products and services offered in the United States of America. IBM may not offer the products, services, or features discussed in this document in

other countries, and the information is subject to change without notice. Consult your local IBM representative for information on the products, services, and features available in your area.

It is possible that this publication may contain reference to, or information about, IBM products (machines and programs), programming, or services that are not announced in your country. Such references or information must not be construed to mean that IBM intends to announce such IBM products, programming, or services in your country.

Requests for copies of this publication and for technical information about IBM Personal Computer products should be made to your IBM authorized reseller or IBM marketing representative.

© Copyright International Business Machines Corporation 1999. All Rights Reserved.

Note to U.S. Government Users - Documentation related to restricted rights - Use, duplication or disclosure is subject to restrictions set forth in GSA ADP Schedule Contract with IBM Corp.

## Product Warranty and Notices

The following warranty information applies to products purchased in the United States, Canada, and Puerto Rico. For warranty terms and conditions for products purchased in other countries, see the enclosed Warranty insert, or contact your IBM reseller or IBM marketing representative.

International Business Machines Corporation

Armonk, New York, 10504

### Statement of Limited Warranty

The warranties provided by IBM in this Statement of Limited Warranty apply only to Machines you originally purchase for your use, and not for resale, from IBM or your reseller. The term "Machine" means an IBM machine, its features, conversions, upgrades, elements, or accessories, or any combination of them. Unless IBM specifies otherwise, the following warranties apply only in the country where you acquire the Machine. If you have any questions, contact IBM or your reseller.

Machine: Smart Card Security Kit  
Warranty Period \* : 1 Year

\* Contact your place of purchase for warranty service information.

### Production Status

Each Machine is manufactured from new parts, or new and used parts. In some cases, the Machine may not be new and may have been previously installed. Regardless of the Machine's production status, IBM's warranty terms apply.

### The IBM Warranty for Machines

IBM warrants that each Machine 1) is free from defects in materials and workmanship and 2) conforms to IBM's Official Published Specifications. The warranty period for a Machine is a specified, fixed period commencing on its Date of Installation. The date on your receipt is the Date of Installation, unless IBM or your reseller informs you otherwise.

During the warranty period IBM or your reseller, if authorized by IBM, will provide warranty service under the type of service designated for the Machine and will manage and install engineering changes that apply to the Machine.

For IBM or your reseller to provide warranty service for a feature, conversion, or upgrade, IBM or your reseller may require that the Machine on which it is installed be 1) for certain Machines, the designated, serial-numbered Machine and 2) at an engineering-change level compatible with the feature, conversion, or upgrade. Many of these transactions involve the removal of parts and their return to IBM. You represent that all removed parts are genuine and unaltered. A part that replaces a removed part will assume the warranty service status of the replaced part.

If a Machine does not function as warranted during the warranty period, IBM or your reseller will repair it or replace it with one that is at least functionally equivalent, without charge. The replacement may not be new, but will be in good working order. If IBM or your reseller is unable to repair or replace the Machine, you may return it to your place of purchase and your money will be refunded.

If you transfer a Machine to another user, warranty service is available to that user for the remainder of the warranty period. You should give your proof of purchase and this Statement to that user. However, for Machines which have a life-time warranty, this warranty is not transferable.

### **Warranty Service**

To obtain warranty service for the Machine, you should contact your reseller or call IBM. In the United States, call IBM at **1-800-772-2227**. In Canada, call IBM at **1-800-565-3344**. You may be required to present proof of purchase.

IBM or your reseller will provide certain types of repair and exchange service, either at your location or at IBM's or your reseller's service center, to restore a Machine to good working order. Types of service may vary from country to country. IBM or your reseller will inform you of the available types of service for a Machine based on its country of installation.

When a type of service involves the exchange of a Machine or part, the item IBM or your reseller replaces becomes its property and the replacement becomes yours. You represent that all removed items are genuine and unaltered. The replacement may not be new, but will be in good working order and at least functionally equivalent to the item replaced. The replacement assumes the warranty service status of the replaced item. Before IBM or your reseller exchanges a Machine or part, you agree to remove all features, parts, options, alterations, and attachments not under warranty service. You also agree to ensure that the Machine is free of any legal obligations or restrictions that prevent its exchange.

You agree to:

1. obtain authorization from the owner to have IBM or your reseller service a Machine that you do not own; and
2. where applicable, before service is provided -
  - a. follow the problem determination, problem analysis, and service request procedures that IBM or your reseller provide,
  - b. secure all programs, data, and funds contained in a Machine, and
  - c. inform IBM or your reseller of changes in a Machine's location.

IBM is responsible for loss of, or damage to, your Machine while it is 1) in IBM's possession or 2) in transit in those cases where IBM is responsible for the transportation charges.

### **Extent of Warranty**

IBM does not warrant uninterrupted or error-free operation of a Machine.

The warranties may be voided by misuse, accident, modification, unsuitable physical or operating environment, improper maintenance by you, removal or alteration of Machine or parts identification labels, or failure caused by a product for which IBM is not responsible.

THESE WARRANTIES REPLACE ALL OTHER WARRANTIES OR CONDITIONS, EXPRESS OR IMPLIED, INCLUDING, BUT NOT LIMITED TO, THE IMPLIED WARRANTIES OR CONDITIONS OF MERCHANTABILITY AND FITNESS FOR A PARTICULAR PURPOSE. THESE WARRANTIES GIVE YOU SPECIFIC LEGAL RIGHTS AND YOU MAY ALSO HAVE OTHER RIGHTS WHICH VARY FROM JURISDICTION TO JURISDICTION. SOME JURISDICTIONS DO NOT ALLOW THE EXCLUSION OR LIMITATION OF EXPRESS OR IMPLIED WARRANTIES, SO THE ABOVE EXCLUSION OR LIMITATION MAY NOT APPLY TO YOU. IN THAT EVENT SUCH WARRANTIES ARE LIMITED IN DURATION TO THE WARRANTY PERIOD. NO WARRANTIES APPLY AFTER THAT PERIOD.

### **Limitation of Liability**

Circumstances may arise where, because of a default on IBM's part or other liability you are entitled to recover damages from IBM. In each such instance, regardless of the basis on which you are entitled to claim damages from IBM (including fundamental breach, negligence, misrepresentation, or other contract or tort claim), IBM is liable only for:

1. damages for bodily injury (including death) and damage to real property and tangible personal property; and
2. the amount of any other actual direct damages or loss, up to the greater of U.S. \$100,000 or the charges (if recurring, 12 months' charges apply) for the Machine that is the subject of the claim.

UNDER NO CIRCUMSTANCES IS IBM LIABLE FOR ANY OF THE FOLLOWING:

1) THIRD-PARTY CLAIMS AGAINST YOU FOR LOSSES OR DAMAGES (OTHER THAN THOSE UNDER THE FIRST ITEM LISTED ABOVE);

2) LOSS OF, OR DAMAGE TO, YOUR RECORDS OR DATA; OR

3) SPECIAL, INCIDENTAL, OR INDIRECT DAMAGES OR FOR ANY ECONOMIC CONSEQUENTIAL DAMAGES (INCLUDING LOST PROFITS OR SAVINGS), EVEN IF IBM OR YOUR RESELLER IS INFORMED OF THEIR POSSIBILITY. SOME JURISDICTIONS DO NOT ALLOW THE EXCLUSION OR LIMITATION OF INCIDENTAL OR CONSEQUENTIAL DAMAGES, SO THE ABOVE EXCLUSION OR LIMITATION MAY NOT APPLY TO YOU.

## **Trademarks**

IBM is a registered trademark of International Business Machines Corporation.

Microsoft and Windows are registered trademarks of Microsoft Corporation.



# Contents

---

<b>Contents</b> .....	<b>vii</b>
<b>Preface</b> .....	<b>10</b>
<b>Introduction</b> .....	<b>11</b>
Document Conventions.....	13
Getting Support and Service .....	14
Additional Technical Support Resources .....	14
Step 1. Problem Solving.....	14
Step 2: Preparing for the Call .....	15
<b>Part I</b> .....	<b>16</b>
<b>Welcome to the IBM Smart Card Security Kit</b> .....	<b>17</b>
What is the IBM Smart Card Security Kit? .....	17
Features of the IBM Smart Card Security Kit Administration Module .....	18
Administrator Overview .....	20
IBM Smart Card Security Kit's Security Components .....	20
Administrator Setup Overview .....	20
Some Considerations .....	20
Security Suggestion .....	21
Security Plans — Three Examples .....	22
Implementing the IBM Smart Card Security Kit for a Single User .....	22
Implementing the Smart Card Security Kit for an Organization.....	22
Implementing IBM Smart Card Security Kit for a Large Organization.....	23
How Emergency Access Works.....	23
Emergency Access Passphrase Suggestions.....	24
<b>Installation</b> .....	<b>25</b>
Compatibility with Windows 3.1 and Windows 95/98 .....	26
Migrating to the IBM Smart Card Security Kit .....	26

Minimum Hardware and Software Requirements.....	26
Before Installing the Software.....	27
Making diskettes from the CD-ROM .....	27
Installing the Administrator SCsecurity Software .....	28
Using the Installer .....	28
Step 1a: Installing the Administrator Software From the CD-ROM.....	28
Step 1b: Installing the Administrator Software From Diskette.....	29
<b>Part II .....</b>	<b>30</b>
<b>IBM Smart Card Security Kit Administrator Setup.....</b>	<b>31</b>
Before You Begin.....	31
Setting Up Emergency Access .....	32
Emergency Key Protection.....	33
Backing Up the Administrator Preference File .....	35
Creating the User Setup Diskette .....	36
Testing Emergency Access.....	37
Viewing Emergency Access Information .....	37
Distributing the User Setup Diskette .....	38
<b>Part III .....</b>	<b>40</b>
<b>Administrator's Tasks .....</b>	<b>41</b>
Using the Smart Card Administration Control Panel.....	42
Changing the User PIN (User) .....	42
Changing the User Information (User) .....	42
Administration Options (Admin Only).....	43
Allowing the User to Change System Mode.....	45
Overview of the IBM Smart Card Security Kit Administrator Contextual Menu.....	46
Using Emergency Access .....	46
SCsecurity Emergency Contextual Menu.....	46
Emergency Decryption .....	47
Confirming Emergency Access .....	48
Changing Emergency Access Key Protection.....	49
Using SCsecurity Administrator <u>H</u> elp... ..	50
Security Log File.....	51
<b>Uninstalling the Administration Software .....</b>	<b>53</b>
What to do Before Uninstalling SCsecurity Software .....	53
Uninstalling the Administration Software .....	53
<b>Glossary .....</b>	<b>55</b>
<b>Index .....</b>	<b>59</b>
<b>IBM Smart Card Order Form.....</b>	<b>61</b>





# Preface

---

This Administrator Reference Manual contains instructions for installation and setup of the IBM® Smart Card Security Kit hardware and software for Microsoft® Windows® 95 and 98. The complete User and Administrator Reference Manuals are contained on the Smart Card Security Kit CD in a format that can be viewed on-line or printed for off-line reading. Before installing your Smart Card Security Kit, please read this Administrator Reference Manual and become very familiar with its contents.

The IBM Smart Card Security software (SCsecurity) allows diskettes to be made from the software CD for users without a CD-ROM drive. Diskettes can be generated from within the Installation utility by clicking on the appropriate button.

The setup of the IBM Smart Card Security Kit is a two-step process. First, the administrator customizes the IBM Smart Card Security Kit software for implementation. The administrator should review the Administrator Manual for a complete understanding of the options available.

The user then sets up the user software, using parameters generated during the administrator software installation. Refer to the User Reference Manual on the CD-ROM for a complete description of the options available.

---

**NOTE:** An IBM Smart Card Order Form is available at the end of this Administrator Reference Manual. Use it to order additional smart cards.

---

---

**NOTE:** You will be prompted to enter a Personal Identification Number during the installation of the Smart Card Security Kit. The preset or default Administrator Personal Identification Number (PIN) and User PIN for all smart cards is 1234. However, you must replace the Administrator PIN with another PIN of your choice during the installation.

---

# Introduction

The IBM Smart Card Security Kit provides fast and easy security for your computer. It provides individual user authorization by requiring that the smart card be inserted into the smart card reader and that your Personal Identification Number (PIN) be authenticated by the smart card.

It also ensures the privacy of files stored on the computer's hard drive. The IBM Smart Card Security Kit enables the user to encrypt one file, a group of files, or all the files in a folder, with the user's smart card. Even when a file is encrypted, the user can follow familiar Windows 95/98 procedures. For example, double-clicking on a file launches any associated application and opens the file, as usual. The file automatically decrypts while opening, and re-encrypts upon closing. In addition, all encrypted files are available from the **File | Open** menu option of Windows 95/98 applications. Files on hard drives, mapped network folders, and removable disks can be encrypted.

The IBM Smart Card Security Kit's AutoCrypt feature works behind the scenes. When the user adds a folder to the AutoCrypt List, the contents of the folder are automatically encrypted. The IBM Smart Card Security Kit automatically decrypts and re-encrypts files as the user opens and closes them. AutoCrypt folders are distinguished with a locked folder icon.

An Emergency Access key will unlock encrypted files when the user's smart card is inaccessible. For additional security and to protect user privacy, an organization can choose to split the Emergency Access key into parts. Different people (referred to as "trustees") hold different parts of the key file. While each trustee holds a key file, only a specified proportion of the total number of trustee key files are required to decrypt user files.

The IBM Smart Card Security Kit enables secure file sharing by encrypting files using sharable passphrases. These encrypted files can be shared with any Windows 95/98, Windows 3.1, or Windows NT user, with or without the IBM Smart Card Security Kit installed.

IBM Smart Card Security Kit complies with the following applicable industry standards:

- ISO 7816-1, -2, -3, 4 (Smart Card)
- ISO 7811-1 (Embossed Card)
- T=0 and T=1 Smart Card Protocol
- Type II PC Card (PC Card Standard, dated 3/97)
- Version 2.1 PCMCIA Interface Software (Card & Services)
- Microsoft PC/SC 1.0
- Open Card Framework
- PCCS #11 and CAPI
- X.509 Digital Certificates
- EIA/TIA-232 Serial Port
- PS/2 Keyboard Port

---

## Document Conventions

As you begin using this documentation, note the following typographical conventions.

- Key names are in small capital letters. For example:

Enter the user's name and press ENTER.

When you are instructed to press ENTER, pressing RETURN will have the same effect.

- Information an administrator enters is shown in a monospace, boldfaced type. Information an administrator enters that varies is shown in italic boldfaced type. When typing a command, enter the information the italicized words represent, not the words themselves. For example:

*drive letter*: \setup (enter *d*: \setup, if the drive letter is d:)

- References in the text to the Smart Card Security Kit file names are shown in bold type. For example:

Select **setup.exe** file from the IBM Smart Card Security Kit folder.

- Options in dialog boxes are shown in bold type. For example:

Select the **Encrypt as self-extracting Windows file (.exe)** check box.

- Menu options in the application are shown in bold type. For example:

Select **Use Smart Card key** from the **E**ncrypt menu.

- Field, button, and checkbox labels are shown in bold type. For example:

Enter the user name in the **N**ame field and click **OK**.

The terminology used in this Administrator Reference Manual appears in the Glossary starting on page 55.

---

**IMPORTANT:** Notes, cautions and other important information are enclosed between two lines before and after the text that you must read and act upon to prevent potential problems.

---

## Getting Support and Service

If you have questions about your new Options By IBM (OBI) product, or require technical assistance, visit the IBM Personal Computing Support web site at

<http://www.pc.ibm.com/support>

### Additional Technical Support Resources

On-line technical support is available throughout the life of your product. On-line assistance can be obtained through the Personal Computing Support web site, the PSG Electronic Bulletin Board System, and the IBM Automated Fax System.

<i>On-line Technical Support</i>	
IBM Personal Computing Web Page	<a href="http://www.pc.ibm.com">www.pc.ibm.com</a>
IBM PSG BBS	1-919-517-0001
IBM Automated Fax System	1-800-426-3395 1-800-465-3299 (in Canada)

You can also get help and information through the IBM PC Help Center, 24 hours a day, seven days a week. Response time may vary depending on the number and nature of the calls received. For the support telephone number and support hours by country, refer to the following table.

<i>Support 24 hours a day, 7 days a week</i>	
Canada	1-800-565-3344
U.S.A. / Puerto Rico	1-800-772-2227

If you call 90 days or more after the date of withdrawal of this product or after your warranty has expired, you might be charged a fee.

### Step 1. Problem Solving

You may be able to solve the problem yourself. Before calling the Help Center, please prepare for the call by following these steps:

1. If you are having installation or configuration problems, refer to the detailed sections on installation found in this Administrator Reference Manual, and review any README.TXT files found on the installation CD.
2. Visit the Personal Computing Support web site specific to the model of option you have purchased. Updated installation instructions, hints and tips, or updated system-specific notes are often published in this section. You might find that later device drivers are available that will improve the performance and compatibility for your new option.

3. If you are installing this option in an IBM computer, also visit the applicable support web page for that computer model. These pages might also contain useful hints and tips related to installation of this option and might refer to BIOS or device-driver updates required for your computer model. If you are installing the option in a non-IBM computer, refer to the manufacturer's web site.
4. Uninstall and then reinstall the option. Be sure to decrypt all files before uninstalling SCsecurity software. During the uninstall process, be sure to remove any files that were installed during the previous installation.

---

**CAUTION:** If you re-install the SCsecurity software, you will be unable to decrypt files that were encrypted with user diskettes customized by any previous installation. **Each installation is protected by a different key.**

---

## Step 2: Preparing for the Call

To assist the technical support representative, have available as much of the following information as possible:

1. Option name: IBM Smart Card Security Kit
2. Option number: The information you recorded in the front of the Quick Reference Manual
3. Proof of purchase
4. Computer manufacturer, model, serial number (if IBM), and manual
5. Exact wording of the error message (if any)
6. Description of the problem
7. Hardware and software configuration information for your system

If possible, be at your computer. Your technical support representative might want to walk you through the problem during the call.

## **Part I**

The first section of the this Administrator Reference Manual describes the features of the IBM Smart Card Security Kit, the organization of a security system, and it explains the installation and setup of the Administrator software.



# 1

## Welcome to the IBM Smart Card Security Kit

---

This chapter introduces the basics of the IBM Smart Card Security Kit's encryption method. It also provides an overview of Administrator Setup. Topics include:

- **What is the IBM Smart Card Security Kit?** – How the IBM Smart Card Security Kit fits into the Windows 95/98 environment and protects your data.
- **Administrator Overview** – How to plan for and implement the IBM Smart Card Security Kit.
- **Security Plans** – How the IBM Smart Card Security Kit adapts to organizations of different sizes.
- **How Emergency Access Works** – How to recover data in an emergency.
- **Emergency Passphrase Suggestions** – How to compose robust passphrases.

---

### What is the IBM Smart Card Security Kit?

The IBM Smart Card Security Kit provides fast and easy file security. It ensures the privacy of files stored on local and mapped network folders. Individual files are encrypted at the source where they are created, copied, e-mailed, etc. The Smart Card Security Kit is a utility program that appears as **File** menu options in Microsoft's Windows 95/98 environment.

In addition, the Smart Card Security Kit provides a smart card that is used to limit access to a machine where the SCsecurity software is installed. The user must enter his valid Personal Identification Number (PIN) to access the desktop. The same smart card is also used to safely store the Smart Card Security Kit encryption key and the Private/Public key pair used for digital signatures.

## Features of the IBM Smart Card Security Kit Administration Module

### Powerful Encryption Technology

The Smart Card Security Kit uses the RC4 symmetric cipher, a method of file encryption and decryption that is secure and fast. Analysis shows that RC4 runs very quickly in software, which provides the security of a smart card without a performance penalty.

### Integration with Windows 95 and 98

The IBM Smart Card Security Kit integrates with Windows 95/98 through the user's desktop, the **Start** menu, and the **File** menu in My Computer, Windows Explorer, and Find File. Special Smart Card Security Kit move and copy menu options are available, when a file or folder is transferred, using the right mouse button.

### Protection Against Unauthorized Access

The Smart Card Security Kit uses a smart card containing a Personal Identification Number (PIN), and an encryption key.

When the computer is running, a secure screen saver blocks system access if the smart card is removed. Access is gained by entering the correct Personal Identification Number (PIN) when the smart card is reinserted into the reader.

### File Security

The IBM Smart Card Security Kit enables the user to encrypt one file, a group of files, or all the files in a folder, either with the user's "smart card key" or a shared passphrase. When the user changes his smart card PIN, any file encrypted with that user's "smart card key" can still be decrypted. This is because the user's "smart card key" does not change, only the PIN changes.

### AutoCrypt

The AutoCrypt feature works behind the scenes. When the user adds a folder to the AutoCrypt List, the folder's contents are automatically encrypted. The IBM Smart Card Security Kit automatically decrypts and re-encrypts files as the user opens and closes them. AutoCrypt folders are distinguished with a special icon, displayed below:



### Individual File Encryption

Encrypting a single file with a "smart card key" protects files one-by-one. Even when a file is encrypted, the user can follow familiar Windows 95/98 procedures. For example, double-clicking on a file launches any associated application and opens the file, as usual. The file automatically decrypts when opening, and re-encrypts upon closing. In addition, all encrypted files are available from the **File | Open** menu option of Windows 95/98 applications. Files on hard drives, mapped network folders, and removable disks can be encrypted.

## **Sharing Encrypted Files**

The IBM Smart Card Security Kit enables secure file sharing by encrypting files with sharable passphrases. These encrypted files can be shared with any Windows 95, Windows 98, Windows 3.1, or Windows NT user, with or without a Smart Card Security Kit installed.

## **Secure File Transfer**

The IBM Smart Card Security Kit can create a self-extracting, encrypted file that can be read on an unprotected system.

## **Secure Screen Saver**

The secure screen saver blocks access to your system if the smart card is removed from the reader. Access is available after entering the proper PIN when the smart card is reinserted into the reader.

## **White List Manager**

The white list manager allows the administrator to control access to a particular system. The administrator is able to add multiple users to the local access list.

## **Emergency Access Key Decryption of Files**

An Emergency Access Key unlocks encrypted files when the user's smart card is inaccessible. For additional security and to protect user privacy, an organization can choose to split the emergency access key into parts. Different people (referenced as "trustees") hold a part of the key file. While each trustee holds a key file, only a specified number of trustee key files are required to decrypt user files.

## **Backup Restore Utility**

The Backup Restore Utility allows the backup of card information. The contents of a backup, such as user information, can be restored to a card by an administrator. The Backup Restore Utility is only available when the system is in unsecured mode.

## **Remote Administration**

Emergency file recovery can take place at the administrator's computer. The Smart Card Security Kit safeguards privacy with a method of distributing authority over file recovery. The Smart Card Security Kit's security log file provides a record of all emergency file recovery activity.

## **Multicard Support**

Multicard support allows the use of applications for other smart cards. If the system is in unsecured mode, other smart cards can be inserted into the reader and used with their associated application software.

## Administrator Overview

This section provides an overview of how to strengthen your file security plan with your IBM Smart Card Security Kit.

### IBM Smart Card Security Kit's Security Components

- **Administrator preferences** determine how the Smart Card Security Kit will be configured for your organization's users.
- **Trustee key parts** enable Emergency Access to files.
- **User smart card** is the key to file encryption and decryption.

### Administrator Setup Overview

- Select trustees
- Install and Setup Administrator software
- Set up Emergency Access.
  - Set Emergency Access for a Single User*OR*
  - Split Emergency Access among trustees
  - Assist in Trustee Key Diskette creation
- Generate administrator preferences
- Back up special administrator files

Distribute the administrator preference file to users, using a diskette or a network folder.

### Some Considerations

To customize the setup for your users, you must make the following decisions:

- **On what computer do you want to keep the administrator software?**

If possible, the administrator software should be kept on an administrative computer. It should be accessible to the administrator and trustees only.

- **How do you want to distribute the Emergency Access key?**

You can split up the Emergency Access key among responsible members (trustees) of your organization. Gaining access to data then requires a minimum number of the trustees to agree to unlock a user's encrypted file. "How Emergency Access Works" on page 23 will help you make an informed decision.

- **How may trustees participate in the IBM Smart Card Security Kit's Emergency Access procedures?**

During Emergency Access setup, if you do choose to split the Emergency Access key, you designate the number of trustees and the threshold number (for example, 4 out of 7) required to access encrypted data. All trustees must participate in Emergency Access setup.

Emergency file access requires that trustees be present as well, but only the minimum required number of trustees designated as necessary for recovering data. "How Emergency Access Works" on page 23 will help you make an informed decision.

### **Security Suggestion**

Allow only the Emergency Access trustees and administrator to observe the emergency decryption process. Such a restriction avoids the possibility of others seeing the entry of the Emergency Access key passphrases, knowing the required number of trustees, or even knowing what the Emergency Access key diskettes look like.

## Security Plans — Three Examples

The IBM Smart Card Security Kit software consists of administrative and user features. Dividing tasks in this way enables several desirable effects. The administrative features can meet an organization's security requirements and enable the administrator to access needed data. The user features give the user security control as files are created.

The Smart Card Security Kit setup consists of two parts:

- **Administrator Setup** – for installation of applications that allow the emergency recovery of files, creation of the passphrases, and enforcement of organizational security policy. In essence, it designs your users' file security plan.
- **User Setup** – for the installation of encryption and decryption software and the implementation of the file security plan defined by the administrator.

As you step through the Administrator Setup, you decide what settings best fit your organization. Base your choices on the type of organization you are administering and your defined file security plan. The following examples illustrate three typical ways to set up the software:

- For a single user
- For an organization
- For an organization with several distinct internal groups

### Implementing the IBM Smart Card Security Kit for a Single User

An individual user of the Smart Card Security Kit can set up the administrator software and the user software on one computer or on separate computers. The user can act also as the administrator for Emergency Access.

A single user must perform the following steps on a desktop or laptop computer:

1. Set up the administrator software on the designated administrator system.
2. Set up the user software on the user's system.

These two steps are executed sequentially if the Stand-Alone option is chosen during installation.

### Implementing the Smart Card Security Kit for an Organization

A security administrator can tailor the software to a particular organization's needs.

To implement smart card security for an organization with more than one user, an administrator must perform the following steps:

1. Set up the administrator software on the administrator's system.
2. Distribute the user setup diskettes to users or store equivalent files in a network folder.

## Implementing IBM Smart Card Security Kit for a Large Organization

A large organization with multiple groups can designate an administrator for each group. Each administrator can then separately install the administrator software and tailor the SCsecurity software to that particular group's needs. Each group will have its own Emergency Access key and trustees.

To implement Smart Card Security for multiple groups, the organization's security administrator distributes to each group's administrator copies of the organization's security requirements. Each administrator then implements Smart Card Security according to the procedures in "Implementing the Smart Card Security Kit for an Organization" on page 22. Each group's name must be unique. Each group's administrator then distributes the customized user setup files through diskettes or network folders accessible only to that group. Only members of a particular group should have access to the administrator files that were customized for that group.

Your organization may choose to implement more complex plans than those described in this section. For example, you may have an umbrella group that needs emergency file access for several subgroups. The umbrella group can secure the subgroups' trustee key parts. Needed data can then be accessible vertically, to the umbrella group, but remain inaccessible to all unrelated subgroups. For more information on this and other advanced file security solutions, contact your local IBM representative.

---

## How Emergency Access Works

The Emergency Access feature allows recovery of the encrypted files for any user in an organization when the user's smart card is not available.

During Administrator Setup, the administrator creates a Smart Card Security public/private key pair for accessing encrypted files. The administrator places the public key portion on the User Setup Diskette, copies the diskette, and distributes the copies to users. The Emergency Access Key is the private key portion and is protected by either a single passphrase or multiple trustee passphrases. For our purposes, the Smart Card Security Kit distinguishes these two options as choosing either to keep the Emergency Access Key whole or to split it into parts.

The Emergency Access key is entrusted to member(s) of the organization. This distribution can occur in one of two ways:

- The Emergency Access key is kept whole. It is protected by a single passphrase on the machine where the administrator software is installed.

*OR*

- The Emergency Access key is split up and placed on multiple diskettes (Trustee Key Diskettes), each held by a different person (a trustee) and each protected by its own passphrase.

If the Emergency Access key is split among multiple trustees, a minimum ("threshold") number of trustees must be present to activate it. For example, an organization might have seven trustees and a threshold of four. The presence of any four of the seven trustees is required to decrypt a user's files. The number of trustees can be as large as 255. The threshold number can be the total number, although most security plans call for a smaller threshold number.

If a user's smart card is lost, the administrator or the user can copy the user's encrypted files into a directory or removable media accessible to the administrator. Emergency decryption requires passphrases to activate the Emergency Access key. Either the administrator enters the single Emergency Access passphrase or the threshold number of trustees insert their Trustee Key Diskettes and enter their Emergency Access passphrases.

The administrator can verify that a user who requests emergency decryption is the same user who encrypted the file during the file recovery process. Additional Emergency Access information can be found in the security log file. For more information, see "Security Log File" on page 51.

---

## Emergency Access Passphrase Suggestions

Creating a strong passphrase is vital for ensuring the security of data. To create strong passphrases:

- Use at least 10 characters: the IBM Smart Card Security Kit requires a minimum of 8 characters.
- Use various uppercase and lowercase letters, spaces, numbers, punctuation, and symbols.
- Avoid using any character more than twice.
- To prevent a potential intruder from discovering the passphrase through a dictionary search, avoid words listed in the dictionary.
- Avoid using personal information that a potential intruder could guess or find: the name of your spouse, child, or parent; your home or work street name, number, or city; your birthday, telephone number, or social security number.
- Create a passphrase you can commit to memory. Do not reveal it to anyone. If you write it down, store the paper in a secure, locked place.

<b>Weak Passphrases</b>	<b>Strong Passphrases</b>
Abcdefghi	*4 score & 7 years ago*
Qwerty	>>I R8 her Hily!<<<
Junior Johnson	Jr. wakes up like this (-o)



# 2

## Installation

---

The IBM Smart Card Security Kit protects your computer from intrusion and keeps your data private. The IBM Smart Card Security Kit's encryption disguises a file by making the readable data inside unreadable. Decryption returns a file to its original state, making it readable again. The Smart Card Security Kit also enables you to share encrypted files with others – even if they do not have the IBM Smart Card Security Kit installed on their computer.

The IBM Smart Card Security Kit provides an Emergency Access capability. If necessary, user files can be decrypted with the cooperation of individuals within the organization. These individuals are chosen by the administrator; each holds a part of the organization's Emergency Access key (referenced as "trustees.") If the user forgets his smart card or forgets to decrypt files before an absence, the trustees can work together to recover vital data.

This chapter explains how to set up the IBM Smart Card Security Kit administrator software. Topics include:

- **Compatibility with Windows 3.1 and Windows 95/98** – Explains the compatibility level with the other Microsoft operating system.
- **Migrating to the IBM Smart Card Security Kit** – Instructions for users of other encryption software.
- **Minimum Hardware and Software Requirements** – List the minimum hardware and software requirement for using the IBM Smart Card Security Kit.
- **Before Installing the Software** – Explains what has to be done before installing the software.
- **Installing the Administrator SCsecurity Software** – How to install the IBM Smart Card Security Kit, step-by-step.

---

## Compatibility with Windows 3.1 and Windows 95/98

This product is intended for Windows 95 and Windows 98 **only**. It is not intended for Windows 3.1, or Windows NT.

To share files with Windows 3.1 or NT users, the files should be encrypted with a shared passphrase or the file encryption should be removed before copying the files to an appropriate media.

---

**NOTE:** To maintain filename compatibility with Windows 3.1, the IBM Smart Card Security Kit creates an encrypted file with an eight-character name. The encrypted files can then be shared with any Windows 95, Windows 98, Windows 3.1 or Windows NT user, with or without the IBM Smart Card Security Kit installed.

---

---

## Migrating to the IBM Smart Card Security Kit

**IMPORTANT:** If you have any other smart card access or data encryption software installed, you must first **decrypt all encrypted files** and uninstall that program before installing the IBM Smart Card Security Kit. Files encrypted with other security programs **cannot** be decrypted by the IBM Smart Card Security Kit.

---

## Minimum Hardware and Software Requirements

Before installing the IBM Smart Card Security Kit, you must have the following computer and software:<sup>1</sup>

- An IBM or IBM-compatible computer (486SX microprocessor, 33 MHz or faster) with 16 MB of RAM and 90 MB of free disk space, a VGA 640x480 screen capable of displaying 256 colors;
- One available Type II PCMCIA Interface Slot with PCMCIA Interface Software (Card and Socket Services) version 2.1 (notebook kit only);
- One standard serial port and a standard PS/2 keyboard port (desktop kit only);
- A 1.44MB 3.5-inch floppy drive;
- Access to a CD-ROM drive;
- Microsoft Windows 98 or Windows 95.

---

**CAUTION:** It is imperative that you update your system with the latest BIOS and device drivers **BEFORE** attempting to install any of the smart card software contained on the CD. In most cases, your system was manufactured before support for devices like smart cards was available. Refer to your systems support organization to obtain the latest updates for your system.

---

To obtain updates, IBM PC customers can logon to:

---

<sup>1</sup> From this point on, we refer to Windows 95 and Windows 98 simply as Windows unless necessary.

---

<http://www.pc.ibm.com/us/support>

---

---

## Before Installing the Software

---

**NOTE:** The IBM Smart Card Security Kit should not be installed on a file server.

---

Before performing the installation, save all documents, backup important files and close **ALL** running applications including anti-virus programs. You should only leave Explorer and other necessary Windows utilities operational.

## Making diskettes from the CD-ROM

---

**IMPORTANT:** If you need to create diskettes from the CD-ROM, follow the following steps:

---



### To create 1.44MB floppy disk images from the CD-ROM:

1. Have a box of blank formatted 1.44 MB diskettes at hand. The number of diskettes needed will depend on the type of installation you choose.
2. Locate a computer that has both a CD-ROM drive and a floppy drive.
3. Start Windows 95 or Windows 98, and insert the CD into the CD-ROM drive. If AutoRun is enabled, the installation utility will automatically load after you insert the CD into the CD-ROM drive.
4. If AutoRun is not active, select **Start**, and then select **Run**. Type *d:\setup*, where *d:* is the letter designating the CD-ROM drive. A letter other than *d:* may be used on your system. Press **Enter** and an introduction screen will be displayed.
5. Select the **Install** button under SCsecurity software.
6. Choose **Make Diskettes** from the Installation Configuration screen.
  - a. Select a drive.
  - b. Insert a diskette into the diskette drive and click **Generate** in the Make Diskette Install Utility dialog box.
  - c. Label each diskette appropriately for proper installation.
7. When the last diskette has been prepared, a message confirming that SCsecurity installation was successfully copied to the diskettes will appear. Select **OK**.
8. In the **Make Diskette Install Utility**, select **Close** to return to the Installation Configuration screen.
9. Use these diskettes to install SCsecurity. For more information, refer to the section “Step 1 b: Installing the Administrator Software From Diskette” on page 29.

---

## Installing the Administrator SCsecurity Software

---

**IMPORTANT: Read all instructions to ensure proper installation.**

---

The following installation scenarios are possible:

1. One person acting as administrator AND user. This type of installation is called “Stand-Alone Security”.

In the Installation Configuration dialog box, select **Stand-Alone Security**.

For the Administrator software, see the section on installing the Administrator software on page 29 of this Administrator Reference Manual.

2. One person acting as administrator for several users.

Install the Administration software **only** on the administrator’s computer. In the Installation Configuration dialog box, select **Administrator**.

Install the User software on each user system. In the Installation Configuration dialog box, select **User**. Detailed instructions for installing the User software are available in the User Reference Manual.

---

**NOTE:** To customize the installation, select **Custom** in the Installation Configuration dialog box. This option allows for a full selection of the security components to be installed. Custom installation should only be used by persons with intimate knowledge of the SCsecurity software and the hardware that it is being installed on.

---

### Using the Installer

The Administration software should be installed by the Security Administrator, usually only on the administrator’s system.

Start Windows 95 or Windows 98, and insert the CD into the CD-ROM drive. If AutoRun is enabled, the installation utility will automatically load after you insert the CD into the CD-ROM drive.

If AutoRun is not active, select **Start**, and then select **Run**. Type *d:\setup*, where *d:* is the letter designating the CD-ROM drive. A letter other than d: may be used on your system. Press **Enter** and an introduction screen will be displayed.

The IBM SCsecurity screen will appear. Click **Install** under SCsecurity Software to install the software. The Welcome screen will appear. Click **Next** to continue the installation.

Read the International License Agreement. Accept the Agreement to continue with the Installation. Otherwise, the installation will abort.

In the Installation Configuration dialog box, select the type of configuration you wish to install.

Select **Help** for information about each installation type.

### Step 1a: Installing the Administrator Software From the CD-ROM

(If you are installing from diskette, see Step 1b below.)

1. Start Windows 95 or Windows 98, and insert the CD into the CD-ROM drive. If AutoRun is enabled, the installation utility will automatically load after you insert the CD into the CD-ROM drive.
2. If AutoRun is not active, select **Start**, and then select **Run**. Type *d:\setup*, where *d:* is the letter designating the CD-ROM drive. A letter other than d: may be used on your system. Press **Enter** and an introduction screen will be displayed.
3. Select **Install** under SCsecurity Software. The **Welcome** screen will appear.
4. Click **Next** to continue with the installation.
5. Read the Software License Agreement. Do not continue **if you do not agree with the terms of the license**. If you answer **Yes** the installation will proceed.
6. In the **Installation Configuration** screen, select the type of configuration you wish to install. Select **Help** for information about each type of installation. To install the administrator software, select **Administrator**.
7. The Choose Destination Location dialog box opens. Select a location (directory) where the files will be installed.
8. Click **Next** to begin the installation.
9. Follow the installation steps displayed on your screen.
10. For more information, refer to Chapter 3, IBM Smart Card Security Kit Administrator Setup, on page 33 of this Administrator Reference Manual.

### Step 1b: Installing the Administrator Software From Diskette

1. Start Windows 95 or 98, and insert the first diskette in the drive.
2. Open Windows Explorer and select the diskette.
3. Double click on the installation file (**setup.exe**).
4. An installation program will be loaded to make it easier to install the software. The Installation welcome screen will appear and explain how to install the application software. Choose **Next** to proceed with the installation.
5. Read the License Agreement. Do not continue **if you do not agree with the terms of the license**. If you answer **Yes**, the installation will proceed.
6. On the Installation Configuration screen, select the type of configuration you wish to install. To install the Administrator Security Kit, select **Administrator**.
7. The Choose Destination Location dialog box opens. Select a location (directory) where the files will be installed using **Browse** or accept the default.
8. Click **Next** to begin the installation.
9. Follow the installation steps displayed on your screen.

For more information, refer to Chapter 3, IBM Smart Card Security Kit Administration Setup on page 33.

## Part II

This section addresses the setup of the IBM Smart Card Security Kit Administration Software.

# 3

## IBM Smart Card Security Kit Administrator Setup

---

This chapter describes how to set up the IBM Smart Card Security Kit administrator's software and preferences. Your trustees must be present to set up the IBM Smart Card Security Kit's Emergency Access if you are splitting the Emergency Access key. Topics include:

- **Before You Begin** – The resources needed for Administrator Setup.
- **Setting Up Emergency Access** – How to create and split up the Emergency Access key.
- **Testing Emergency Access** – How to confirm Administrator Setup.
- **Distributing the User Setup Diskette** – How to make sure the users have the data they need.

---

### Before You Begin

This section lists the resources you need at hand during Administrator Setup.

People who hold emergency key files are called “trustees”. Choose trustees with two criteria in mind:

- (1) they should be reliable, trusted individuals
- (2) they should not all be traveling frequently.

All trustees must be present during setup. Each trustee must have a formatted diskette to store a part of the Emergency Access key.

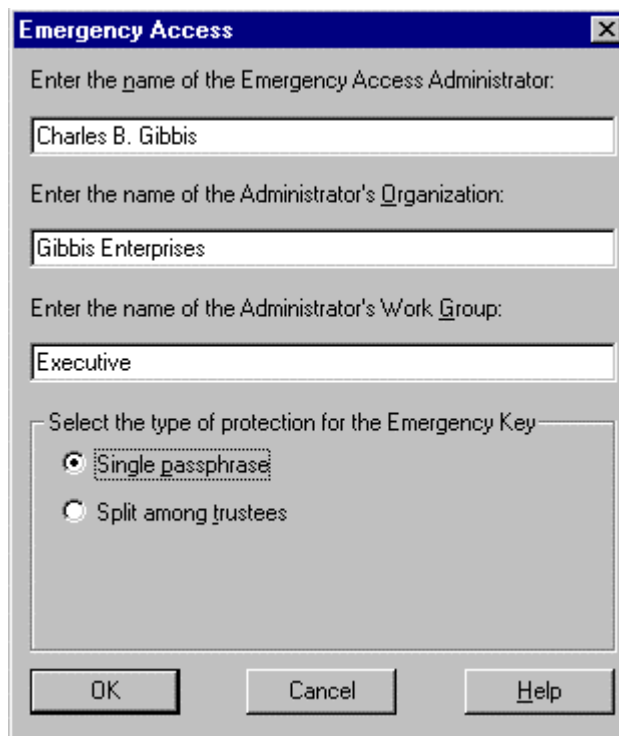
During administrator software setup, you create Administrator files which are copied to a location of your choice. These files will be used during user setup.

After you have set up the administrator software, have a diskette available for backing up the administrator preference files. This backup diskette must be created and strictly guarded.

At this point, the administrator needs to set up the Emergency Access procedure.

## Setting Up Emergency Access

The Emergency Access dialog box appears:



### Fill in the Emergency Access dialog box as follows:

1. Type the name of the Emergency Access Administrator in the top text box, and press TAB.
2. Type the name of the Organization in the middle text box, and press TAB. The organization refers to the administrator's organization (this information will be used to locate the administrator when emergency access is needed).
3. Type the name of the Work Group in the bottom text box, and press OK. The Work Group refers to the administrator's work group (this information will be used to locate the administrator when emergency access is needed).
4. Select the type of protection for the Emergency Key. Refer to the section on **Emergency Key Protection** on page 35.

---

**IMPORTANT:** The organization text box and the work group text box can be used for different purposes. They can be used to provide information on the administrator and how to locate him in case of emergency. If the administrator is controlling several groups, the text boxes can also be used to identify a specific security group and subgroup.

---



---

The emergency access information should not be left empty. Remember that users will access this information in emergency situations. For more information, refer to the section on Viewing Emergency Access Information on page 39.

---

## Emergency Key Protection



Choose one of the following options:

- If you chose **single passphrase** to protect the Emergency Access key, go to **Option 1**, below.

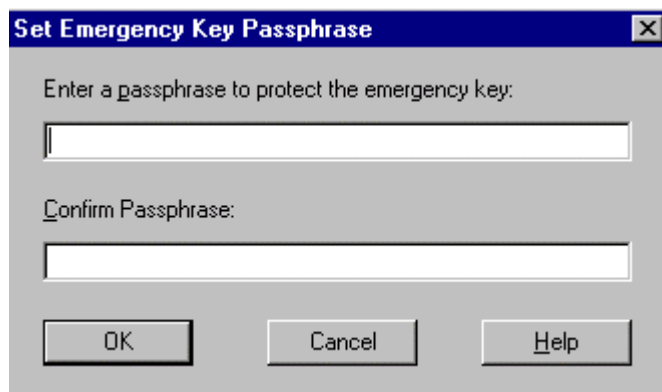
*OR*

- If you chose **split among trustees** to split the protection among several trustees, go to **Option 2** on page 34.

The screenshot shows a dialog box titled "Emergency Access" with a close button (X) in the top right corner. The dialog contains three text input fields and a radio button selection area. The first field is labeled "Enter the name of the Emergency Access Administrator:" and contains the text "Charles B. Gibbis". The second field is labeled "Enter the name of the Administrator's Organization:" and contains "Gibbis Enterprises". The third field is labeled "Enter the name of the Administrator's Work Group:" and contains "Executive". Below these fields is a section titled "Select the type of protection for the Emergency Key" with two radio buttons: "Single passphrase" (which is selected) and "Split among trustees". At the bottom of the dialog are three buttons: "OK", "Cancel", and "Help".

### Option 1: Protecting the Emergency Access Key with a Single Passphrase

If you chose **Single passphrase**, the Set Emergency Key Passphrase dialog box opens.



The Emergency Access key passphrase you enter will decrypt any IBM Smart Card Security Kit-encrypted file in your organization, so craft the passphrase carefully.

#### **To protect the Emergency Access key with a single passphrase:**

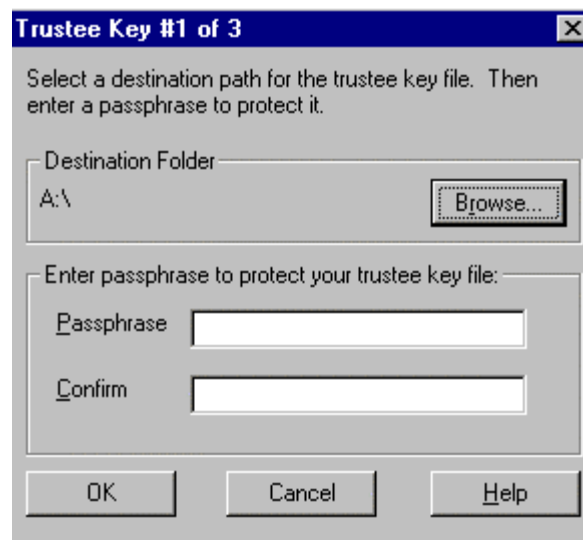
1. Type the passphrase in the top text box, and press TAB.  
The passphrase must have a minimum of eight (8) characters.
2. Type the passphrase again in the lower text box, and choose **OK** or press ENTER.
3. At this point, you are prompted to back up the Administrator preference file (pkfile).
4. Go to the section “**Backing Up the Administrator Preference File**”.

### Option 2: Splitting the Emergency Access Key Among Trustees

You will be reminded to assemble diskettes to hold the number of Emergency Access key parts you specified.

#### **To protect the Emergency Access key with multiple passphrases:**

1. If you select Split among trustees, you will have to fill out information about the number of trustees. Enter the number of trustees in the Split among Trustees section. After you have gathered formatted diskettes (one for each trustee) and all trustees are present, choose **OK** or press ENTER to create a Trustee Key Diskette for each trustee.  
Each of the next dialog boxes prompts each trustee to place a trustee key file on a Trustee Key Diskette.
2. Each new trustee will be prompted to enter emergency information.
  - Insert a blank diskette to create a Trustee Key Diskette.

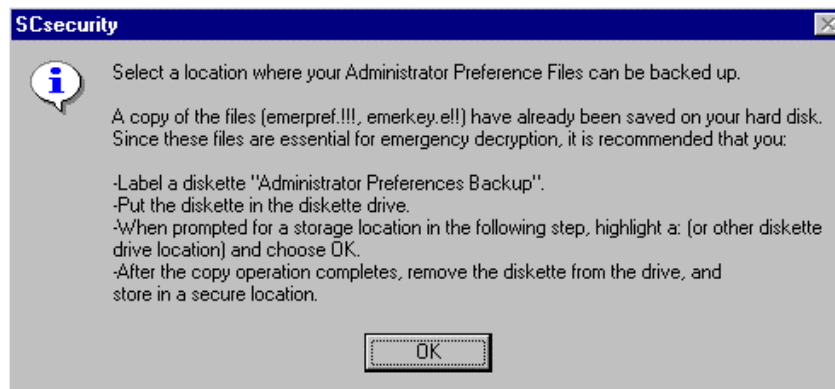


- Type a passphrase, and press TAB. The passphrase must have a minimum of eight characters.
  - Type the passphrase again.
  - Choose **OK**.
3. Choose **OK**, and repeat step 2 with each of the remaining trustees.  
The Emergency Access Key Generation dialog box opens.
  4. Choose OK or press ENTER.

## Backing Up the Administrator Preference File

The next step in the setup is to back up the administrator preference file that will be used for Emergency Access.

1. Select the location to save the backup copy of the preference file.
2. If you are backing up to a diskette, insert a blank diskette labeled “Administrator Preferences Backup”.



---

**IMPORTANT:** The file is copied to the administrator’s hard drive automatically. The administrator preference files should also be copied to a diskette as a backup. This backup diskette should be kept in a secure location at the Administrator’s office.

---

## Creating the User Setup Diskette

The next step in the setup is to create the user setup diskette.

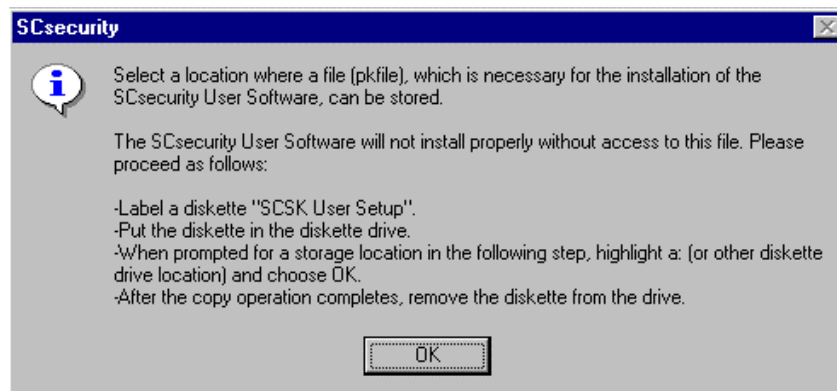
3. Select the location where you want to store the user setup file (pkfile) that contains the administrator public key.
4. Insert a blank diskette labeled “User Setup”.

---

**IMPORTANT:** The administrator public key will be required by the SCsecurity user software installation.

---

Each user must now install the Smart Card Security Kit user software from the CD-ROM or from diskettes if diskettes were created beforehand. A copy of the user setup file will be required for each user installation. For more information, refer to the User Reference Manual.



## Testing Emergency Access

Before making multiple copies of your organization's master User Setup Diskette or placing the files in a network folder, confirm that Emergency Access works.



### To test Emergency Access:

1. Install the user software on one computer (for the test, it can be the same machine that holds the administrator software).
2. Place the smart card in the reader and enter a PIN. See the "User Setup" in the User Reference Manual for instructions.
2. Have the user encrypt a file.

See "Encrypting Files with a Smart Card" in the User Reference Manual for instructions.

3. Decrypt the test file.

Use the Emergency Access procedure. Refer to "To decrypt a user's files with the Emergency Access Key" on page 47.

## Viewing Emergency Access Information



### To display the Emergency Access Information dialog box:

Choose **Emergency Access Info** from the **SCsecurity Emergency** menu.

The Emergency Access Information dialog box opens.

The dialog box shows the following information:

- The name of the Emergency Access Administrator, Organization, and Group
- Emergency Access Authentication number, which is a unique number created when Emergency Access was installed
- Emergency Access Key Protection type (and the number of diskettes (trustees) required to decrypt the file).

The organization's name appears in each user's Encrypt dialog box so that the Emergency Access key can be verified. The organization should publicize the authentication number to its users. Users can compare this number with the one displayed in their Encrypt dialog box. If the two numbers are the same, the user is assured that the Emergency Access key has not been altered or replaced.

---

## Distributing the User Setup Diskette

If the test was successful, make the appropriate number of copies from the master IBM Smart Card Security Kit User Setup Diskette and distribute them to users for installation. Alternatively, you can copy the diskette contents to a directory on your network and instruct users as to where they can find the files for use during user installation.

The SCsecurity CD-ROM contains an Administrator Reference Manual (**admin.pdf**) and a User Reference Manual (**user.pdf**) in portable document format. You can place the IBM Smart Card Security Kit User Reference Manual (**user.pdf**) and the Adobe Acrobat Reader setup program (**ar40eng.exe**) on a network drive for the users' reference during user installation.



## Part III

This section addresses the features of the IBM Smart Card Security Kit Administration Software.



# 4

## Administrator's Tasks

---

This chapter explains how to recover files, how to access the security log, and how to regain complete security after file recovery. Topics include:

- **Using the Smart Card Administration Control Panel** – How to change User PIN, User Information, Administration Options.
- **Overview of the IBM Smart Card Security Kit Administrator Contextual Menu** – Gives a brief overview of the Administrator options available when the contextual menu appears.
- **Using Emergency Access** – How to recover files.
- **Changing Emergency Access Key Protection** – How to update Emergency Access.
- **Security Administrator Help** – How to access on-line help.
- **Security Log File** – Information that is stored concerning emergency recovery attempts.

---

## Using the Smart Card Administration Control Panel

The Smart Card Administration icon, located in the Windows control panel, lets the user and/or administrator change various settings:



SmartCard  
Administration

- Change user PIN
- Change user information
- Administration options
- Change system mode

Select one of the four options. This dialog box remains open until the **Close** button is chosen.

Administrators should change the Admin PIN on each smart card at the first opportunity. A good time to do this is when granting access for the smart cards on individual systems.

### Changing the User PIN (User)

To modify the user PIN:

1. Select **Change User PIN**.  
The Change Security Logon PIN dialog box will appear.
2. Enter the current PIN in the **Old PIN** field.
3. Enter the new PIN in the **New PIN** field.
4. Confirm the new PIN by entering it again in the **Confirm PIN** field.
5. Press **Enter** or click **OK** to validate the changes.

### Changing the User Information (User)

To change the user information:

1. Select **Change User Information**.
2. In the SCsecurity User Information dialog box, enter the user's name in the **Cardholder Name** field.
3. Enter the User ID in the **User ID\*** field.
4. Press **Enter** or click **OK** to validate the changes.

\*Mandatory field. Must not be left empty.

## Administration Options (Admin Only)

Select **Administration Options**. The following options will be available in the SCsecurity Administration Options dialog box:

- Change (unblock) Logon PIN
- Change Admin PIN
- White List Manager
  - Enable System Mode
- Backup Restore Utility
- Secure Delete

### Changing the Logon PIN or Unblock Logon PIN

A user's card will be blocked after three consecutive failed logon attempts. The user's card will have to be unblocked by the administrator.

To unblock the user PIN:

1. Enter your Administrator PIN in the **Admin PIN** field.
2. Select the **Change (unblock) Logon PIN** button.
3. In the PIN Management section, enter the new PIN in the **New PIN** field.
4. Confirm the PIN in the **Confirm PIN** field.
5. Press the **Enter** key, or click **Execute** to validate the changes.

### Changing the Admin PIN

To change the Administrator PIN:

1. Enter your administrator PIN in the **Admin PIN** field.
2. Select the **Change Admin PIN** button.
3. In the PIN Management section, enter the New PIN in the **New PIN** field.
4. Confirm the PIN in the **Confirm PIN** field.
5. Press the **Enter** key or click **Execute** to validate the changes.

### Using the White List Manager

Use the White List Manager to control and manage user access to a particular system.

The White List Manager will only be available on a system when users are not logged on or when the system is in unsecured mode.

To access the White List Manager:

1. Enter your administrator PIN in the **Admin PIN** field.
2. Select the **White List Manager** button.
3. Click **Execute**.

4. **To add a user to the list:** If a user is already on the list but not active, click on the checkbox beside the user's name. If a user is not on the White List, insert the new user's smart card into the reader and click **Add User**. The **SCsecurity Rights** dialog box will appear. To grant the user access to the computer, enter the smart card administrator PIN in the **Admin PIN** field. Click **Grant** to add the card to the White List. Click **Cancel** to cancel the operation. Click **Save** to validate the changes to the White List.
5. **To revoke a user's access rights to a system:** Remove the checkmark beside the user's name. Click **Save** to validate the changes to the White List.
6. **To permanently delete a user:** Select the user name. Click **Remove User**. Click **Save** to validate the changes.
7. **To import a White List file:** The import function allows the administrator to create a list of users and distribute it to systems that use the Smart Card Security Kit. This eliminates the need to insert the user smart cards on each computer. To import a White List file, click **Import**. Select the White List file to import. Click **Save** to validate the changes to the White List.
8. **To export a White List file:** The export function allows the administrator to create a list of users and export it to another location. The list can then be imported to other systems that use the Smart Card Security Kit. This eliminates the need to insert the user smart cards on each computer. To export the White List file to another location, click **Export**. Select the location to export the file and enter the file name. Click **Save**.
9. **To enable or disable system mode access:** To grant the user permission to change the system mode, make sure that the Enabled button in the System Mode Access section is checked.

---

**NOTE:** Warn users not to leave their computer unattended without first closing files and applications. Users included on the White List for that computer could access the data by inserting their smart card in the reader and entering their PIN.

---

### Using the Backup Restore Utility

The Backup Restore Utility is only available when the system is in unsecured mode.

To backup the contents of a user card:

1. Enter your administrator PIN in the **Admin PIN** field.
2. Select the **Backup Restore Utility** button.
3. Click **Execute**.
4. **To create a new backup file:** Select **New** from the **File** menu. A new backup file will be opened. To save the contents of a card to the backup file, click **Save Card** or select **Save Card** from the **Card** menu. The Admin PIN Validation box will appear. Enter the admin PIN for the card. Click **Verify**. The User's PIN Verification box will appear. Enter the user PIN for this card. Click **Verify**.

The backup information for the new backup file will appear on the list. To save this backup file, select **Save** from the **File** menu. Select the file location and enter the file name. To save the file, click **Save**. The Admin PIN Validation box will appear. Enter the admin PIN. Click **Verify**. Click **Exit** to return to the SCsecurity Administrator Options.

5. **To add information to a backup file:** Select **Open** from the **File** menu. Select a backup file (.sci) and click **Open**. The Admin Validation box will appear. Insert the smart card into the reader and enter the admin PIN for the card. Click **Verify** to open the backup file. The backup information for the card will be listed.

**To add a card to the backup file:** Insert the smart card into the reader. The Admin PIN Validation box will appear. Enter the admin PIN for the card. Click **Verify**. The User's PIN Verification box will appear. Enter the user PIN for this card. Click **Verify**.

To save the backup file, select **Save** from the **File** menu. Enter the admin PIN. In the **Backup Restore Utility**, click **Exit** to return to the SCsecurity Administration Options.

**To delete information from a backup file:** Select **Open** from the **File** menu. Select a backup file (.sci) and click **Open**. The Admin Validation box will appear. Insert the smart card into the reader and enter the Admin PIN for the card. Click **Verify** to open the backup file. The backup information for this file will be listed. Select the name of the user to be removed from the backup file. Click **Delete**. The user name and the associated information will be removed from the backup file.

To save changes to the backup file, click **Save** from the **File** menu. Click **Exit** to return to the SCsecurity Administration Options.

6. **To restore the backup information to the card:** Select the name of the user. Click **Restore** or select **Restore Card** from the **Card** menu to restore this information to the card. The Admin PIN Validation box will appear. Enter the Admin PIN for the card. Click **Verify**. The User's PIN Verification box will appear. Enter the user PIN for this card. Click **Verify**.

To save changes to the backup file, click **Save** in the **File** menu. The Admin PIN Validation box will appear. Enter the admin PIN for the card. Click **Verify**. Click **Exit** to return to the SCsecurity Administration Options.

---

**CAUTION:** After the contents of a card are restored to a card, the new card must be added to the White List Manager.

**NOTE:** If the contents of a card are restored using the Backup Restore Utility, the user's PIN will be reset to 1234 by default. To change this, remove the tick in the Backup Restore Utility dialog box.

---

### Activating Secure Delete

Secure Delete will destroy all data in files deleted from your computer.

To activate Secure Delete:

1. Enter your administrator PIN in the **Admin PIN** field.
2. Select **Secure Delete**. **Allow Secure Delete** will appear.
3. Select **Allow Secure Delete** to activate the function.
4. Click **Execute** to save the changes.

### Allowing the User to Change System Mode

1. Select **Change System Mode** in the SCsecurity administration.

2. Choose **Secure Mode** or **Unsecured Mode**.
3. Enter your PIN when asked.
4. Click **OK** to save the change. Click **Cancel** to nullify the change.

---

**NOTE:** Warn users not to leave their computer unattended without first closing files and applications. Users included on the White List for that computer could access the data by inserting their smart card in the reader and entering their PIN.

---

---

## Overview of the IBM Smart Card Security Kit Administrator Contextual Menu

### SCsecurity Emergency

- **E**mergency Decrypt... provides a method to decrypt files.
- **C**hange Emergency Key Protection... lets the administrator change the Emergency Access Method.
- **E**mergency Access **I**nfo... displays the Emergency Access Information dialog.
- **A**bout... displays copyright information, software version, etc.

**S**Csecurity Administrator **H**elp... provides information on the IBM Smart Card Security Kit Administrator features, procedures, menu options, and dialog boxes.

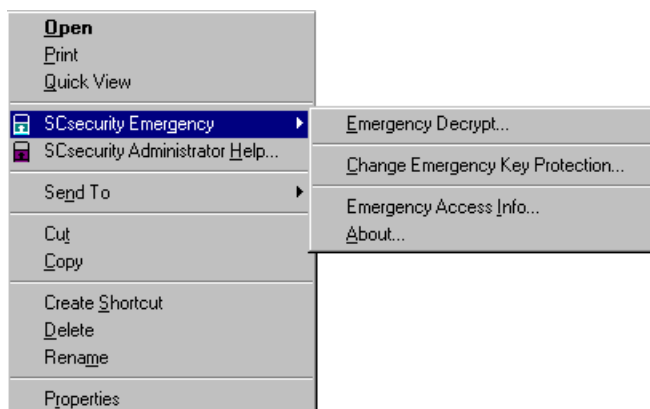
---

## Using Emergency Access

The Smart Card Security Kit’s Emergency Access feature provides a way to decrypt and recover a user’s encrypted files when a user’s smart card is not available, using the SCsecurity Emergency contextual menu. Emergency Access decrypts files encrypted with either the user’s “smart card key” or shared passphrase.

### SCsecurity Emergency Contextual Menu

Right click on a selected file, then select SCsecurity Emergency to see the contextual menu which includes the following choices: Emergency Decrypt..., Change Emergency Key Protection, Emergency Access Info..., and About.



## Emergency Decryption

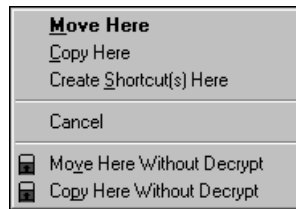
Under some conditions, the administrator may have to copy the files to be recovered to another system. The procedure is as follows:



### To decrypt a user's files with the Emergency Access key:

Files can be decrypted on any computer where the administrator has access. To decrypt the files on a different computer:

1. Copy the encrypted files to a diskette using the **Copy Here Without Decrypt** or the **Move Here Without Decrypt** menu option.
  - Select the encrypted files.
  - Click the right mouse button and drag the files to the floppy drive.
  - Release the right mouse button and choose **Copy Here Without Decrypt** or **Move Here Without Decrypt**.



2. On the computer where the Emergency File recovery will be done, select the files to be decrypted from Windows Explorer or My Computer window.
3. Right-click the mouse button, select **SCsecurity Emergency**, and choose **Emergency Decrypt**.

The next step depends on how your organization chooses to set up the Emergency Access key. Use one of the following methods:

### If the Emergency Access Key Is Protected by a Single Passphrase



#### To decrypt a user's files when the Emergency Access key is protected by a single passphrase:

1. Enter the Emergency Access key passphrase, and choose **OK** or press ENTER. A dialog box opens with the name of the first encrypted file to be recovered.
2. Choose **OK** or press ENTER to decrypt the file(s).

The Confirm User Name dialog box opens with the name of the first encrypted file to be recovered and the name of the user who encrypted the file. Go to "Confirming Emergency Access" to learn more about this dialog box.

### If the Emergency Access Key is split into several keys:



#### To decrypt a user's files when the Emergency Access key is split into parts:

1. Assemble the threshold number of emergency access trustees with their trustee key diskettes.  
The threshold number of trustees was chosen when emergency access was first installed and refers to the minimum number of trustees needed to access the emergency access key.
2. Choose **OK** or press ENTER.
3. Instruct a trustee to do the following:
  - Insert a Trustee Key Diskette.
  - Choose **OK**.
  - Type a passphrase.
  - Choose **OK**.
4. Repeat step **3** with each of the remaining trustees until the threshold number is reached.  
When the required number of Trustee Key Diskettes and passphrases has been entered, a dialog box opens with the name of the first encrypted file to be recovered.
5. Choose **OK** or press ENTER to decrypt the file(s).  
The Confirm Emergency Access dialog box opens.

### Confirming Emergency Access

Your attempt to decrypt the file is added to the security log file (see “Security Log File” on page 51). Then, the Confirm User Name dialog box enables you to verify that the user who requested emergency decryption is the same user who encrypted the file.



#### To confirm Emergency Access:

1. In the Confirm User Name dialog box, choose one of the following options:
  - **Recover this file** decrypts the current file. The Smart Card Security Kit software then automatically searches for the next encrypted file.
  - **Recover all files with this user name** decrypts the current file and all other files with the same user name in the selection that have not already been decrypted or skipped.
  - **Skip this file** leaves the current file encrypted. The Smart Card Security Kit software then automatically searches for the next encrypted file.
2. Choose **OK** or press ENTER.  
The software completes the emergency decryption process.



---

## Changing Emergency Access Key Protection

The Smart Card Security Kit software enables the administrator and trustees to change the Emergency Access protection method using the Change Emergency Key Protection... menu item. The Smart Card Security Kit software's public/private key pair remains the same. Only its configuration and the passphrases used to protect the key change. You do not need to change anything on your User Setup Diskette or do any updates of user software.

### To change the Emergency Access key configuration:

1. Assemble the person or people who now protect the Emergency Access key.
  - If a single passphrase protects the Emergency Access key, the individual holding the passphrase must be present.
  - OR*
  - If multiple trustees protect the Emergency Access key, gather the threshold number of trustees (the minimum number needed to access the Emergency Access key – for example, 4 trustees out of 10), with their Trustee Key Diskettes.
2. Assemble the person or people who will protect the Emergency Access key, according to the new protection method.
  - If a single passphrase will protect the Emergency Access key, the individual who will hold that passphrase must be present.
  - OR*
  - If multiple trustees will protect the Emergency Access key, they must all be present, each with a diskette.
3. From the **SCsecurity Emergency** contextual menu, choose the **Change Emergency Key Protection...** item.

The Change Emergency Key Protection dialog box opens.

---

**NOTE:** What happens next depends on the configuration of the Emergency Access key. The following instructions assume that the Emergency Access key is currently protected with a single passphrase. The procedure for changing the Emergency Access key protection is the same if the Emergency Access key is split into parts on diskettes, except that the threshold number of trustees must insert their diskettes and enter passphrases during step 5.

---

4. In the Change Emergency Key Protection dialog box, choose **OK** or press ENTER.  
If the Emergency Access key is whole, the Emergency Access Passphrase dialog box prompts you for a passphrase.
5. Enter the current Emergency Access key passphrase, and choose **OK** or press ENTER.
6. Select the new Emergency Access key protection method:
  - If the Emergency Access key will be protected with a single passphrase, select **Single passphrase**, and choose **OK** or press ENTER.
  - OR*

- If the Emergency Access key will be protected by trustees (each with their own Trustee Key Diskette), select **Split among trustees**. Enter the number of trustees, and the threshold number of trustees required to be present for file decryption. Then, choose **OK** or press ENTER. The dialog box expands.



**To complete setting up the new protection method, perform one of the following steps:**

- If you chose to protect the Emergency Access key with a single passphrase, go to “Option 1: Protecting the Emergency Access Key with a Single Passphrase” described on page 34 of this Administrator Reference Manual.

*OR*

- If you chose to protect the Emergency Access key by splitting it among trustees, go to “Option 2: Splitting the Emergency Access Key Among Trustees” described on page 34 of this Administrator Reference Manual.

---

**IMPORTANT:** Always back up the emergency preference file (**emerpref.!!!**), safeguard the diskette, and memorize the passphrase.

---

### Emergency Access Ino...

displays the Emergency Access Information dialog box that can also be accessed by clicking on the More button in the Emergency Access group box of the Encrypt or Decrypt dialogs. The dialog contains the following information:

- The name of the Emergency Access Administrator, Organization, and Group.
- Emergency Access Authentication number, which is a unique number created when Emergency Access was installed.
- Emergency Access Key Protection type.

### About...

displays copyright information, software version, etc.

---

## Using SCsecurity Administrator Help...

The Help function provides information on the IBM Smart Card Security Kit features, such as procedures, menu options, and dialog boxes. It follows the form of a normal Windows-type help file. Subjects can be accessed from an index or by keying in search words. Related topics are hyperlinked within the Help system so that the reader can move from topic to topic gaining a deeper understanding with each screen.

---

## Security Log File

When you recover a file using emergency recovery procedures, a description of that event is noted in a security log file on the machine where Emergency Access is installed. The log file, **emrgdrt.log**, is a plain text file. You may have to change your viewing options to see hidden files. It is hidden in the same directory where Emergency Access is installed. New entries are added to the end of the log.

The log file records the following information for each decrypted file:

- date and time of decryption
- name of the encrypted file
- name of the user who encrypted the file
- name of the original decrypted file
- date the original file was created
- date the original file was last modified

Here is a sample excerpt from a log file:

```
Decryption time: 03/31/97 09:59
Encrypted file name: c:\documents\topsecret.txt
Encrypting person: Jean Kim
Decrypted file name: c:\documents\topsecret.txt
Creation time: 12/01/96 12:03
Last write time: 2/25/97 17:23
-----
Decryption time: 03/31/97 10:05
Encrypted file name: a:\schedule(!).doc
Encrypting person: Chris Johannson
Decrypted file name: a:\schedule.doc
Creation time: 07/21/96 09:03
Last write time: 07/21/96 09:03
-----
```

When the size of the log exceeds 100K (over 1000 entries), a warning is displayed.

You have the option of saving the log to another hidden file, clearing the log (deleting all entries), or continuing to append to the current log.



# 5

## Uninstalling the Administration Software

---

This chapter explains how to remove the IBM Smart Card Security Administration software safely and easily without any loss of data.

- **What to do before Uninstalling SCsecurity Software** – What must be done to safely uninstall SCsecurity software.
- **Uninstalling SCsecurity Software** – How to uninstall the IBM Smart Card Security Kit software step-by-step.

---

### What to do Before Uninstalling SCsecurity Software

To preserve the option of restoring users' files using the Emergency Access software with its unique key, you must retain the administrator preference file (**emerpref.!!!**).

---

**CAUTION:** If the administrator preference file (**emerpref.!!!**) is destroyed or lost, there is no way to recover files encrypted with the IBM Smart Card Security Kit. Make sure that you have backup copies of this file on a diskette or another suitable media.

---

---

### Uninstalling the Administration Software

Uninstalling the Administration software removes the Smart Card Security Kit Administration software from your computer, as well as removing references to your Smart Card Security Kit files in the Windows registry and other locations.

---

**IMPORTANT:** If other users use the Smart Card Security Kit on this machine, there may be files in the AutoCrypt List that cannot be decrypted during uninstall or after uninstall. See the User Reference Manual for additional information about the AutoCrypt List feature.

---

IBM recommends the use of the standard Windows **Add/Remove Programs** option to uninstall the IBM Smart Card Security Kit user software or the administrator software.

The Smart Card Security Kit Uninstall dialog box opens. This dialog box warns you that only files encrypted by your smart card, **and** located in the AutoCrypt List can be decrypted automatically during the uninstall.



**To uninstall Smart Card Security Kit software if you only have the Administrator software installed:**

1. Log on to the Desktop.
2. Close all other programs and any Smart Card Security Kit windows.
3. From the Control Panel, choose **Add/Remove Programs**.

---

**NOTE:** You can also use the **S**tart menu **R**un option to run the IBM Smart Card Security Kit Uninstall program to remove the IBM Smart Card Security Kit administrator software from the hard drive. The Add/Remove Programs Properties sheet opens.

---

4. Choose **SCsecurity** from the program list, then click **R**emove.  
A confirmation dialog box opens.



**To uninstall Smart Card Security Kit software if you have both the Administrator and User software installed (Stand-Alone):**

1. Log on to the Desktop.
2. Close all other programs and any Smart Card Security Kit windows.
3. From the Control Panel, choose **Add/Remove Programs**.

---

**NOTE:** You can also use the **S**tart menu **R**un option to run the IBM Smart Card Security Kit Uninstall program to remove the IBM Smart Card Security Kit administrator software from the hard drive. The Add/Remove Programs Properties sheet opens.

---

4. Choose **SCsecurity** from the program list, then click **R**emove.  
A confirmation dialog box opens.
5. Click **F**ind to locate encrypted files. Decrypt files and close the Find dialog box.
6. The Remove Shared File? dialog box opens. Choose **Y**es.  
Uninstall removes all shared programs used by the IBM Smart Card Security Kit.
7. Choose **O**K or press enter to reboot your machine and complete uninstall. Windows restarts.

# Glossary

---

<b>Administrator Software</b>	The part of the IBM Smart Card Security Kit used to configure and maintain administrative control over the Smart Card Security Kit User Setup.
<b>Administrator</b>	The person who holds supervisory rights to customize the User Setup and initiate the emergency file access procedure.
<b>Administrator Preferences</b>	Settings created by the administrator, which are used during a user installation. These settings are placed in files and normally written to the user setup diskette at the end of Administrator Setup.
<b>Administrator Setup</b>	The setting up of administrator software, including emergency file access, and user software configuration.
<b>Algorithm</b>	A set of steps the Smart Card Security Kit takes to encrypt and decrypt data securely.
<b>AutoCrypt</b>	The Smart Card Security Kit feature that automatically encrypts and decrypts files in folders (and subfolders) the user or administrator has chosen to keep secure.
<b>Cryptography</b>	The practice and study of encryption and decryption. The encoding of data so that only authorized individuals have access to it.
<b>Decryption</b>	The reverse of encryption. Decryption returns data to its original state, making it readable again.
<b>Emergency Access</b>	The Smart Card Security Kit feature that enables trusted individuals to gain access to files without the password of the user who encrypted the files.
<b>Encryption</b>	The transformation of data into some unreadable form. Its purpose is to ensure privacy by keeping the information hidden from anyone for whom it is not intended.
<b>Group</b>	A collection of individuals within an organization who share the same administrator. The group can also refer to the administrator's work group. This information is used for emergency access purposes.

<b>Key</b>	A very large number the Smart Card Security Kit uses to encrypt and decrypt a file.
<b>Key Generation</b>	The creation of a key for encryption and decryption.
<b>Organization</b>	A collection of individuals who share the same administrator. The organization can also refer to the administrator's organization. This information is used for emergency access purposes.
<b>Passphrase</b>	A string of characters used to gain authorized access to a computer and its data. Passphrases are usually longer than passwords, and therefore, more secure.
<b>Personal Identification Number (PIN)</b>	A string of 4 to 8 characters used to gain authorized access to a computer and its data.
<b>Pkfile (Administrator Public Key File)</b>	The administrator public key file ( <b>pkfile</b> ) containing the administrator's public key and Emergency Access information. The IBM Smart Card Security Kit uses the information in this file combined with the user's PIN protected smart card to generate the user preference file.
<b>Plain Text</b>	Readable text. Text that is not encrypted. Clear text.
<b>Privacy</b>	The protection of a message such that only intended recipients can read a message.
<b>Personal Security Device (PSD)</b>	A smart card or encrypted file. The PSD contains information about the user including the user's X.509 certificate and the IBM Smart Card Security Kit "smart card key".
<b>RC4® Symmetric Cipher</b>	The technology behind file encryption. RC4 uses randomly seeded keys to encrypt files.
<b>RSA Public Key Cryptosystem™</b>	The technology behind Emergency Access. The IBM Smart Card Security Kit public key is the key exchanged between the administrator and the users of the IBM Smart Card Security Kit. It enables the emergency decryption of files.
<b>Smart Card Key</b>	The key generated during User Setup. This key personalizes each user's version of the IBM Smart Card Security Kit. The "smart card key" is stored in the Smart Card and is protected by the user PIN. The user's "smart card key" is used to encrypt and decrypt a file when the <b>Use Smart Card key</b> menu option is selected.
<b>Security Log File</b>	A file found in the Smart Card Security Kit administrator's directory. It records any attempts to recover files.
<b>Shared Passphrase</b>	A string of characters used to gain authorized access to data. Passphrases are usually longer than passwords, and therefore, more secure. Shared passphrases are used to encrypt and decrypt files the user wishes to share with other users.
<b>Smart Card</b>	A personal security device that can perform its own cryptographic calculations and have an access control system.
<b>Screen Saver</b>	The Smart Card Security Kit feature that prevents access to, or use of, a computer (excluding the mouse and keyboard) until a smart card is present and a PIN is entered
<b>Trustee</b>	One person out of a group of people entrusted to authorize



	Emergency Access to the user's encrypted files.
<b>Trustee Key Diskette</b>	A diskette that holds one trustee key file.
<b>Trustee Key File</b>	One file that enables access to the Emergency Access key. The Emergency Access key is split up and placed in multiple files (trustee key files), each held by a different person (a trustee) and each protected by its own Emergency Access passphrase.
<b>User Setup</b>	Installing and setting up the Smart Card Security Kit user software on a computer.
<b>User Setup Diskette</b>	The diskette that holds the administrator public key file (pkfile). This diskette is generated by the administrator. It is necessary for user installation.



# Index

---

## A

About.....	52
Administration Options.....	45
administrator overview .....	20
Administrator Preference File .....	37
Administrator Public Key .....	38
Administrator Setup	
and security plans .....	22
single user.....	22
testing .....	39
administrator software	
single user setup .....	22
uninstalling .....	55

## B

Backup Restore Utility.....	45
-----------------------------	----

## C

Change (unblock) Logon PIN.....	45
Change Admin PIN.....	45
<b>Change Emergency Key Protection...</b>	51
Change User Information.....	44
Change User PIN .....	44
configuration.....	26
Customized User Setup.....	33

## D

default Personal Identification Number .....	10
--	----

## E

Emergency Access .....	21, 48
how it works .....	23
security suggestions.....	21
Emergency Access Info.....	52
emergency access passphrase .....	34
emergency key	
changing protection .....	51

defined .....	23
distributed access .....	21
feature .....	11, 19
single passphrase.....	36
emergency key diskettes .....	<i>See also</i> trustee key diskettes
creating.....	36
security suggestion .....	21
emergency key files	
trustee.....	33
emergency key passphrase	
suggestions .....	24
<b>emrgdcert.log</b> .....	53
Enable System Mode .....	45

## F

filename compatibility .....	26
------------------------------	----

## H

hardware requirements .....	26
-----------------------------	----

## I

IBM web site .....	14
installation	
hardware.....	25
software.....	25
Installing the Administrator Software from CD-ROM .....	29

## M

Master Customized User Setup .....	33
migrating	
user.....	26

## P

passphrase	
suggestions .....	24
Personal Identification Number	
default .....	10

## R

recommended configuration .....	26
recovering encrypted files .....	21, 48

## S

<b>SCsecurity Administrator Help</b> .....	52
<b>SCsecurity Emergency contextual menu</b> .....	48, 51
Secure Delete .....	45
security	
plans .....	22
suggestions .....	21
security log file .....	53
single user	
Administrator Setup .....	22
software requirements .....	26
System Mode .....	45

## T

trustee .....	11, 19
and changing emergency key protection .....	51
how Emergency Access works .....	23
participation .....	21
passphrase suggestions .....	24
Trustee .....	23
trustee key diskette .....	36

## U

uninstall	
administrator software .....	55
previous versions .....	26
Uninstall	
Smart Card Security Kit Administration software .....	55
upgrading	
user .....	26
User Information .....	44
user name	
confirming .....	49
recover all files .....	50
User PIN .....	44
User Setup .....	22
User Setup .....	33
User Setup Diskettes	
copying .....	40
user software	
setting up .....	25

## W

Web site .....	14
White List Manager .....	45
Windows 3.1	
filename compatibility .....	26
Windows 95 .....	18, 26
Windows 98 .....	18, 26
Windows NT	
compatibility .....	26



# IBM Smart Card ORDER FORM

Fax order form along with PO or credit card number to Gemplus @ (215) 654-8882.

This is a secure fax line.

If you do not have access to a fax machine, please e-mail the order form to [ussales@gemplus.com](mailto:ussales@gemplus.com).

<b>Order Date:</b>		<b>Sales Rep:</b>	<b>GEMPLUS KIT GROUP</b>
<b>Customer:</b>		<b>Requested By:</b>	
<b>Application:</b>		<b>PO Number:</b>	
<b>Card Number:</b>		<b>Expire Date:</b>	AE      MC      VISA

**BILL TO:**


**SHIP TO:**


<b>Order Placed By:</b>		<b>Attention:</b>	
<b>Telephone:</b>		<b>Fax:</b>	
<b>Type of Payment</b> (Select one: Net 30 days, or C.O.D.)		<b>Ship Via:</b>	FedEx USMail UPS Red UPS Blue UPS
<b>Tax Exempt? Yes / No</b> <b>If yes, YOU MUST</b> <b>PROVIDE TAX EXEMPT</b> <b>CERTIFICATE NUMBER</b>		<b>Exempt Certificate</b> <b>Number:</b>	

Item #	Gemplus Part Number	Description	Qty	Unit Price	Ship to Arrive
1	W-C3034199	IBM Smart Card #10L7341 Single Card		\$39.99	Next Day (\$ includes S&H)
2	W-C3034194	IBM Smart Card #10L7341 4 Pack		\$69.99	2 weeks from receipt of PO
3	RPF14257	IBM INTL Smart Card #33L5028 4 Pack		\$69.99	2 weeks from receipt of PO
4	RPF14258	IBM INTL Smart Card #33L5028 Single Card		\$39.99	Next Day (\$ includes S&H)

For special orders contact Tom Hissam at (910) 343-9857.