

# Browser-Based Interface Quick Guide



## Alteon OS 20.1™

Layer 2-7 GbE Switch Module  
for IBM @server BladeCenter

Part Number: 25K9172, March 2004

**NORTEL**  
NETWORKS™

4655 Great America Parkway  
Santa Clara, CA 95054  
[www.nortelnetworks.com](http://www.nortelnetworks.com)  
Reference: 215656-B

Copyright 2003 Nortel Networks, Inc., Great America Parkway, Santa Clara, California 95054, USA. All rights reserved. Part Number: 25K9172.

This document is protected by copyright and distributed under licenses restricting its use, copying, distribution, and decompilation. No part of this document may be reproduced in any form by any means without prior written authorization of Nortel Networks, Inc. Documentation is provided “as is” without warranty of any kind, either express or implied, including any kind of implied or express warranty of non-infringement or the implied warranties of merchantability or fitness for a particular purpose.

U.S. Government End Users: This document is provided with a “commercial item” as defined by FAR 2.101 (Oct 1995) and contains “commercial technical data” and “commercial software documentation” as those terms are used in FAR 12.211-12.212 (Oct 1995). Government End Users are authorized to use this documentation only in accordance with those rights and restrictions set forth herein, consistent with FAR 12.211- 12.212 (Oct 1995), DFARS 227.7202 (JUN 1995) and DFARS 252.227-7015 (Nov 1995).

Nortel Networks, Inc. reserves the right to change any products described herein at any time, and without notice. Nortel Networks, Inc. assumes no responsibility or liability arising from the use of products described herein, except as expressly agreed to in writing by Nortel Networks, Inc. The use and purchase of this product does not convey a license under any patent rights, trademark rights, or any other intellectual property rights of Nortel Networks, Inc.

Alteon OS, BBI, are the trademarks of Nortel Networks in the United States and certain other countries. Microsoft<sup>®</sup>, Windows<sup>®</sup>, and Windows NT<sup>®</sup> are registered trademarks of Microsoft Corporation in the United States and in other countries. Netscape<sup>®</sup> and Netscape Navigator<sup>®</sup> are registered trademarks of Netscape Communications Corporation in the United States and other countries. Any other trademarks appearing in this manual are owned by their respective companies.



# Contents

---

## **Preface 5**

- Who Should Use This Book 5
- Related Documentation 5
- Typographic Conventions 6
- How to Get Help 7

## **Chapter 1: Getting Started 9**

- Features 9
- Requirements 10
- Switch Set Up 10
  - IP Interfaces 10
  - Enabling/Disabling BBI Access 10
- Web Browser Set Up 11
- Starting the BBI 12

## **Chapter 2: Browser-Based Interface Basics 15**

- Toolbar 16
  - Context Buttons 16
  - Commands 17
- Navigation Window 18
- Forms Window 18
- Message Window 19

## **Chapter 3: Configuring the Switch 21**

- Configuration Steps 21

## **Chapter 4: Viewing Statistics 25**

- Steps for Displaying Statistics 25

**Chapter 5: The Dashboard 27**  
Steps for Displaying Dashboards 27



# Preface

---

Alteon OS Browser-Based Interface (BBI) software is included in the Nortel Networks' family of switches. The BBI software lets you use your Web browser to access switch information and statistics, and to perform switch configuration via the Internet.

This *BBI Quick Guide* provides an overview of how to access and use the Alteon OS Browser-Based Interface.

## Who Should Use This Book

---

This *BBI Quick Guide* is intended for network installers and system administrators engaged in configuring and maintaining a network. It assumes that you are familiar with your GbE Switch Module, your Web browser, Ethernet concepts, IP addressing, the IEEE 802.1d Spanning-Tree Protocol, and SNMP configuration parameters.

## Related Documentation

---

For documentation on installing the switch physically, see the *Installation Guide* for your GbE Switch Module.

For details about the switch information, statistics, and configuration parameters available using the Alteon OS BBI, see the Alteon OS *Command Reference* and *Application Guide*.

# Typographic Conventions

The following table describes the typographic styles used in this book.

**Table 1** Typographic Conventions

Typeface or Symbol	Meaning	Example
AaBbCc123	This type is used for names of commands, files, and directories used within the text.  It also depicts on-screen computer output and prompts.	View the <code>readme.txt</code> file.  Main#
<b>AaBbCc123</b>	This bold type appears in command examples. It shows text that must be typed in exactly as shown.	Main# <b>sys</b>
<AaBbCc123>	This italicized type appears in command examples as a parameter placeholder. Replace the indicated text with the appropriate real name or value when using the command. Do not type the brackets.  This also shows book titles, special terms, or words to be emphasized.	To establish a Telnet session, enter: host# <b>telnet</b> <IP address>  Read your <i>User's Guide</i> thoroughly.
[ ]	Command items shown inside brackets are optional and can be used or excluded as the situation demands. Do not type the brackets.	host# <b>ls</b> [-a]

## How to Get Help

---

If you need help, service, or technical assistance, see the "Getting help and technical assistance" appendix in the Nortel Networks *Layer 2-7 GbE Switch Module for IBM eServer BladeCenter Installation Guide* on the IBM *BladeCenter Documentation CD*.







# CHAPTER 1

## Getting Started

---

This chapter briefly describes the software features and requirements for the Alteon OS Browser-Based Interface (BBI), and explains how to access the BBI start page.

## Features

---

The network administrator can access all switch configuration and monitoring functions through the BBI, a Web-based switch management interface. The BBI has the following features:

- Many of the same configuration and monitoring functions as the command-line interface
- Intuitive and easy-to-use interface structure
- Two levels of password protection
- Nothing to install; the BBI is part of the Alteon OS switch software
- Automatically upgraded with each new software release

---

**NOTE** – You can perform most configuration and monitoring tasks through the BBI. For a comprehensive set of commands, use the command-line interface. Refer to *Alteon OS Command Reference* for Nortel Networks *Layer 2-7 GbE Switch Module for IBM eServer Blade-Center*.

---

## Requirements

---

- GbE Switch Module
- Installed Alteon OS switch software
- PC or workstation with network access to the switch
- Frame-capable Web-browser software, such as the following:
  - Netscape Navigator 4.7x or higher
  - Internet Explorer 6.0x or higher
- JavaScript enabled in your Web browser

## Switch Set Up

---

Before you can access the BBI, minimal configuration is required on the GbE Switch Module.

### IP Interfaces

At least one IP interface must be configured on the switch. This is usually done from the command-line interface during first-time switch set up. Each IP interface address provides a point of access for Alteon OS switch management. The default management interface is 128.

For complete information about configuring IP interfaces, see your GbE Switch Module *Installation Guide*.

### Enabling/Disabling BBI Access

By default, BBI access is enabled. If you need to disable or re-enable access, use the following command from the GbE Switch Module command-line interface:

```
>> Main# /cfg/sys/access/http <disable|enable (or just d|e)>
```

For more information on the accessing and configuring the switch through the command-line interface, see your GbE Switch Module *Installation Guide*.

## Web Browser Set Up

---

Most modern Web browsers work with frames and JavaScript by default, and require no additional set up. However, you should check your Web browser's features and configuration to make sure frames and JavaScript are enabled.

---

**NOTE** – JavaScript is not the same as Java. Please make sure that JavaScript is enabled in your Web browser.

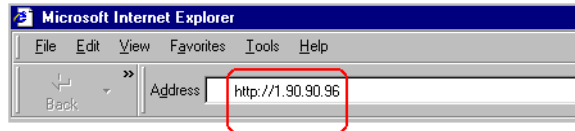
---

## Starting the BBI

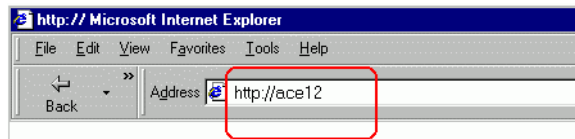
When the switch and browser set up is done, follow these steps to launch the BBI:

1. **Start your Web browser.**
2. **Enter the switch IP interface address in the Web browser's URL field.**

For example, consider an IP interface with a network IP address of 1.90.90.96. Using Netscape Navigator, you could enter the following:

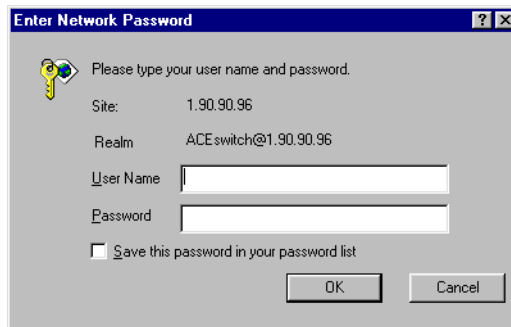


If the IP interface's address has a name on your local domain name server, you could enter the name instead. For example, with Internet Explorer, you could enter the following:



3. **Log in to the switch.**

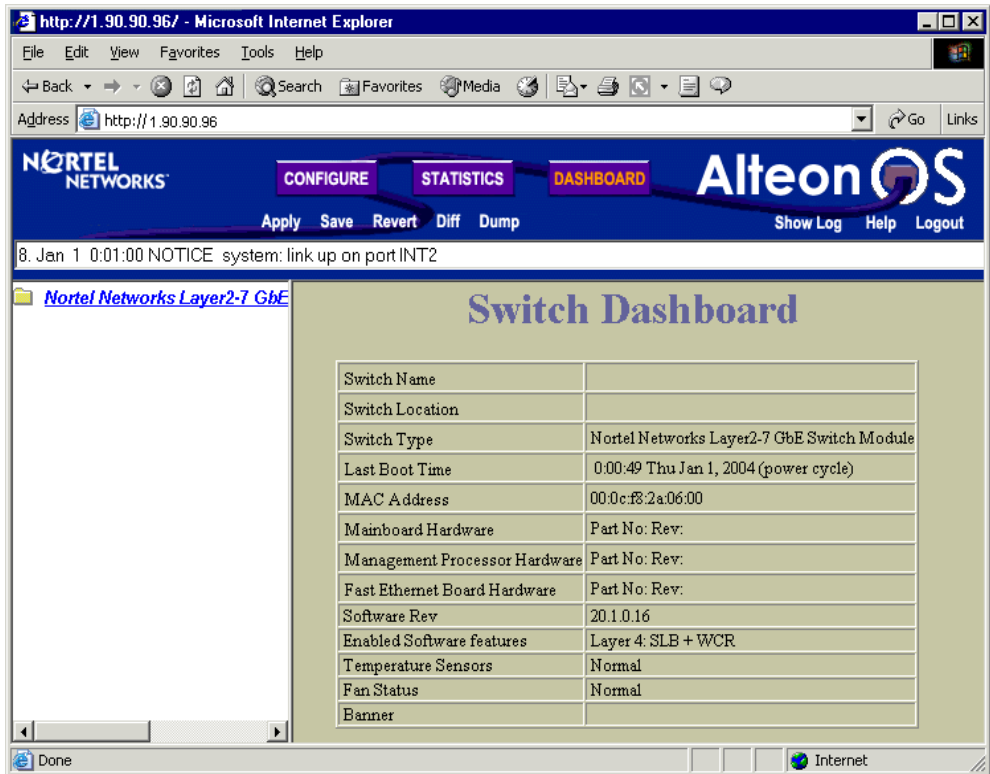
If your switch and browser are properly configured, you will be asked to enter a password:



Enter the account name and password for the switch's administrator or user account. The default account name is *admin*, and the default password is *admin*. For more password information, see your Alteon OS *Command Reference* manual.

#### 4. Allow the BBI Dashboard page to load.

When the proper account name and password combination is entered, the BBI Dashboard page is displayed in your browser's viewing area:




---

**NOTE** – There may be a slight delay while the Dashboard page is being initialized. You should not stop the browser while loading is in progress. When loading is complete, a folder icon will appear in the left-hand navigation window.

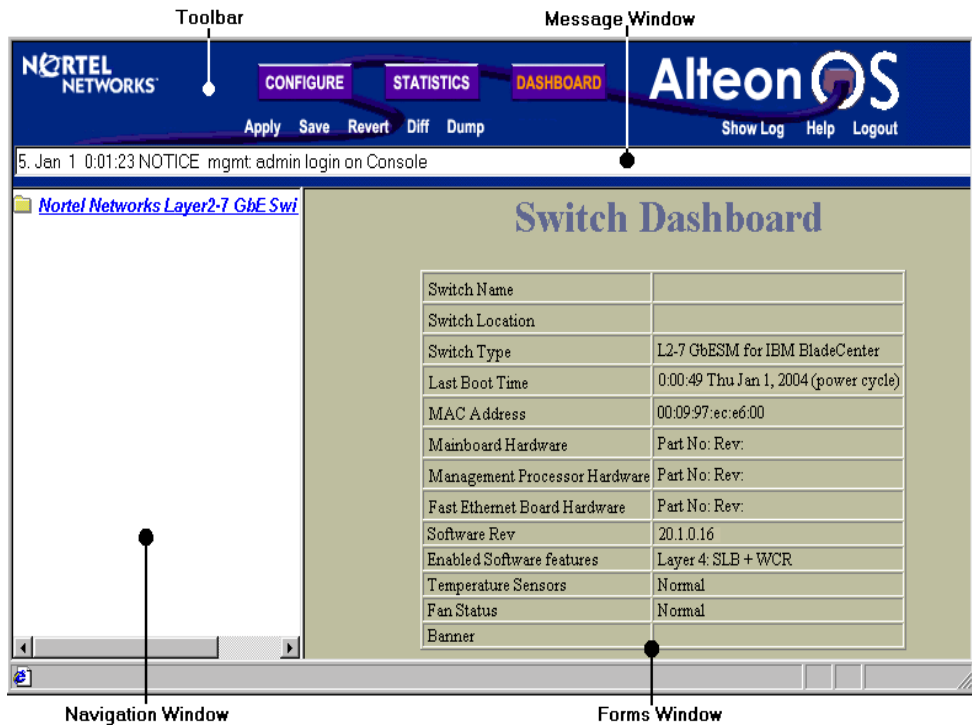
---



## CHAPTER 2

# Browser-Based Interface Basics

Once you are properly logged in, the Alteon OS Browser-Based Interface (BBI) appears in your Web browser's viewing window:



There are four main regions on the Alteon OS screen:

- The toolbar is used for selecting the context for your actions in the other windows.
- The navigation window is used for selecting particular items or features to act upon.
- The forms window is used for viewing or altering switch information.
- The message window is used for displaying the 10 latest switch syslog messages and events.

# Toolbar

---

## Context Buttons

The toolbar is used for setting the context for your actions in the application. There are three context buttons:

---

<b>Configure</b>	When selected, you can access the switch configuration forms. Configuration forms can be altered only if you are logged in using the administrator account. Select an item in the navigation window to display the desired configuration form in the forms window.
<b>Statistics</b>	When selected, you can view information about switch performance. Select an item in the navigation window to display the desired statistics in the forms window.
<b>Dashboard</b>	This context button is selected by default when the BBI is first activated. When selected, basic switch information and status can be viewed in the forms window. Select an item in the navigation window to display the desired dashboard information in the forms window.

---

When a context icon is selected, the button will be highlighted as a reminder of the current context mode.



## Commands

The following general commands are available on the toolbar:

---

<b>Apply</b>	Pending configuration changes do not take effect until the Apply command is selected. Once applied, all changes (except enabling/disabling Spanning-Tree Protocol) take effect on the switch immediately. If you do not save the changes, however, they will be lost the next time the switch is rebooted.
<b>Save</b>	Writes applied configuration changes to non-volatile flash memory on the switch.
<b>Help</b>	Opens a new Web-browser window for displaying the basic online help information. Close the help browser when finished.
<b>Show Log</b>	Opens a new Web-browser window for displaying the 10 most recent switch log messages. Close the log browser when finished.
<b>Logout</b>	Log off the switch and exit the BBI.
<b>Diff</b>	Show any pending configuration changes.
<b>Diff Flash</b>	Compare new configuration with the flash configuration.
<b>Revert</b>	Remove pending configuration changes between “apply” commands. Use this command to restore configuration parameters set since last “apply” command.
<b>Revert Apply</b>	Remove pending configuration changes between “save” commands. Use this command to restore configuration parameters set since last “save” command.

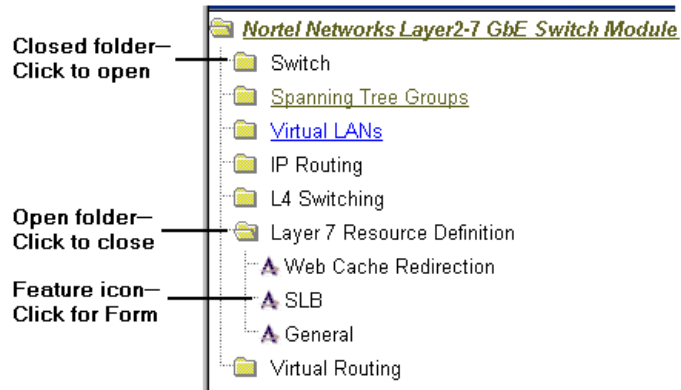
---

## Navigation Window

---

The navigation window is used for selecting a particular switch feature to act upon. Status, statistics, or configuration forms for the selected item will appear in the forms window, depending on the context chosen on the toolbar.

The navigation window contains a tree of folders, sub-folders, and feature icons:



You can click on any closed folder to open it and reveal its contents. Click on any open folder to close it. Click on any feature icon to load the appropriate status, statistics, or configuration form in the forms window.

Some folders also have forms. If the name of the folders is underlined, click on the name to display the appropriate form.

## Forms Window

---

When a feature icon is selected on the navigation window, a status, statistics, or configuration form is displayed in the forms window. The exact nature of the form depends on the current context selected on the toolbar, as well as the type of information available. Not all feature icons have forms for all contexts.

Some forms display switch information such as settings, status, or statistics. Others allow you to make configuration changes to switch parameters.

## Message Window

---

Switch log messages are generated by events such as login/logout activity, password changes, configuration changes, and switch reboot. The BBI records the ten most recent messages and displays each one briefly in the message window. When the tenth message has been displayed, the cycle is repeated.

To view all ten messages at the same time, select the Show Log command on the toolbar. A new Web-browser window will be opened to display the log information. Close the window when finished.

For a list of `syslog` messages, see your Alteon OS *Command Reference* manual.



## CHAPTER 3

# Configuring the Switch

The Alteon OS Browser-Based Interface (BBI) can be used to view and change switch configuration parameters. The same configuration parameters that are available through the switch's command-line interface are present on the BBI configuration forms.

The following provides a basic outline for switch configuration. You should first be familiar with configuration as covered in the *Alteon OS 20.1 Command Reference* manual.

---

**NOTE** – You must be logged in using the administrator account in order to change switch configuration settings.

---

## Configuration Steps

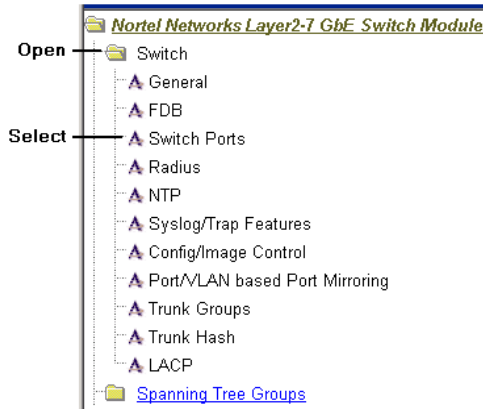
---

Follow these basic steps for viewing or configuring switch parameters:

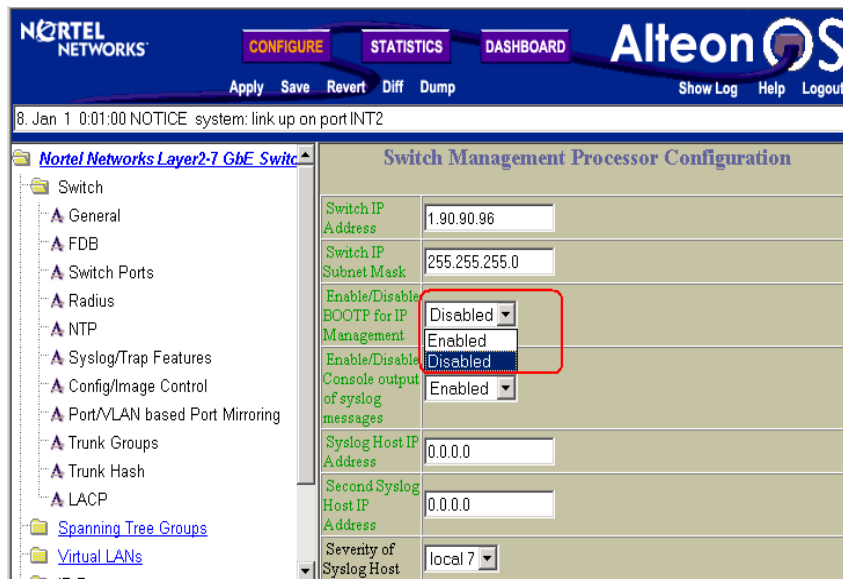
1. Select the Configure context button in the Alteon OS toolbar:



2. Select a feature icon in the navigation window. For example:



3. View or make changes to the settings shown in the forms window. For example:



**NOTE** – Fields which must be configured for proper switch operations are highlighted on the forms in **GREEN** type. Items which load other forms when selected are underlined.

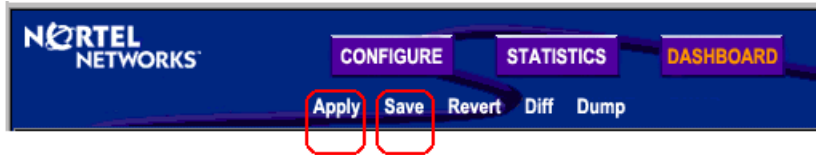
#### 4. Submit, reset, or delete the form contents using buttons on the bottom of the form.

---

<b>Submit</b>	When selected, the form sent to the switch. Any configuration changes are placed in the “pending” state and do not take effect until the toolbar Apply command is given.
<b>Reset</b>	When selected, the form fields are reset to their last submitted values.
<b>Delete</b>	This button is available for configuration items that can be deleted. When selected, the featured item is slated to be removed from the switch configuration database. The item is not actually deleted, however, until the toolbar Apply command is given.

---

#### 5. Apply and save your changes using the toolbar commands.



Pending configuration changes (including deletions) do not take effect until the Apply command is selected.

Applied changes take effect on the switch immediately, but will be lost the next time the switch is rebooted unless the Save command is selected.





## CHAPTER 4

# Viewing Statistics

The Alteon OS Browser-Based Interface (BBI) can be used to view a variety of switch performance statistics. The same statistics that are available through the switch's command-line interface are present on the BBI statistics forms.

The following provides a basic outline for viewing statistics. You should first be familiar with available statistics as covered in the *Alteon OS 20.1 Command Reference* manual.

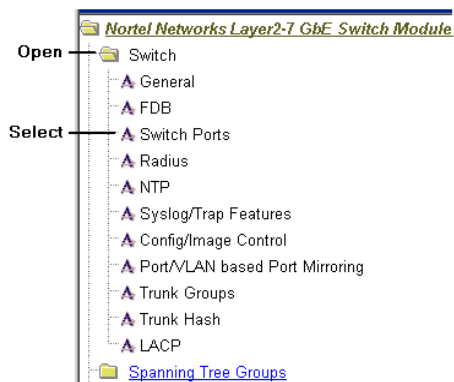
## Steps for Displaying Statistics

Follow these basic steps for viewing switch statistics:

1. Select the Statistics context button in the Alteon OS toolbar:



2. Select a feature icon in the navigation window. For example:



3. View the statistics in the forms window. For example:

The screenshot shows the Alteon OS web interface. The top navigation bar includes 'CONFIGURE', 'STATISTICS', and 'DASHBOARD' tabs. Below the navigation bar, there are buttons for 'Apply', 'Save', 'Revert', 'Diff', and 'Dump', along with 'Show Log', 'Help', and 'Logout' links. A status bar at the top indicates '20. Jan 1 0:02:09 ALERT stp: STG 16, topology change detected'. The left sidebar shows a tree view of the configuration hierarchy, with 'Switch' selected. The main content area displays the 'Switch Ports Statistics Summary' table.

Switch Port	InOctets	OutOctets	Total Errors
<a href="#">INT1</a>	191745	2639056	0
<a href="#">INT2</a>	674320	2156279	0
<a href="#">INT3</a>	0	2636809	0
<a href="#">INT4</a>	0	2636923	0
<a href="#">INT5</a>	0	0	0
<a href="#">INT6</a>	0	0	0
<a href="#">INT7</a>	0	0	0
<a href="#">INT8</a>	0	0	0
<a href="#">INT9</a>	0	0	0
<a href="#">INT10</a>	0	0	0
<a href="#">INT11</a>	0	0	0
<a href="#">INT12</a>	0	0	0
<a href="#">INT13</a>	0	0	0
<a href="#">INT14</a>	0	0	0
<a href="#">MGT1</a>	1834368	3784344	0
<a href="#">MGT2</a>	0	0	0
<a href="#">EXT1</a>	72989	304215	0

---

**NOTE** – Items which load other forms when selected are [underlined](#).

---

## CHAPTER 5

# The Dashboard

The Alteon OS Browser-Based Interface (BBI) can be used to view the present settings and operating status of a variety of switch features. The same information available through the switch's command-line interface is present on the dashboard forms.

The following provides a basic outline for viewing the dashboard forms. You should first be familiar with configuration as covered in the *Alteon OS 20.1 Command Reference* manual.

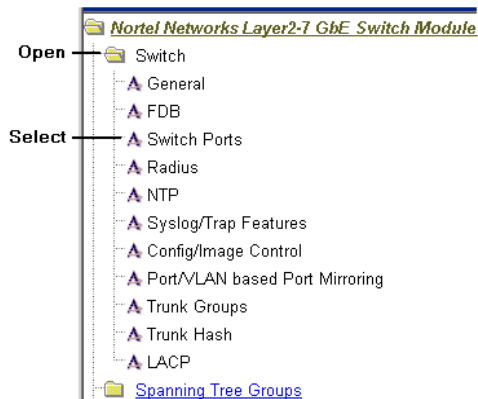
## Steps for Displaying Dashboards

Follow these basic steps for viewing switch dashboard forms:

1. Select the Dashboard context button in the BBI toolbar:



2. Select a feature icon in the navigation window. For example:



## 3. View information shown in the forms window. For example:

15. Jan 1 0:01:14 INFO mgmt: new configuration applied

**Switch Ports Dashboard**

Status	Switch Port Info	Operational Status	Duplex FlowCtl Speed	Input Frames Output Frames	LinkState Changes Total Errors
	<a href="#">INT1</a> : stp:FORWARDING rmon:disabled Port Fast Forward:disabled tagging:enabled PVID:1	operational	Full/Both/1000	1422 38004	1 0
	<a href="#">INT2</a> : stp:FORWARDING rmon:disabled Port Fast Forward:disabled tagging:enabled PVID:1	operational	Full/Both/1000	9062 30365	1 0
	<a href="#">INT3</a> : stp:FORWARDING rmon:disabled Port Fast Forward:disabled tagging:enabled PVID:1	operational	Full/Both/1000	0 37918	1 0
	<a href="#">INT4</a> : stp:FORWARDING rmon:disabled Port Fast Forward:disabled tagging:enabled PVID:1	operational	Full/Both/1000	0 37919	1 0
	<a href="#">INT5</a> : stp: DISABLED rmon:disabled Port Fast Forward:disabled tagging:enabled PVID:1	operational	Full/Both/1000	0 0	0 0
	<a href="#">INT6</a> : stp: DISABLED rmon:disabled Port Fast Forward:disabled tagging:enabled PVID:1	operational	Full/Both/1000	0 0	0 0

**NOTE** – Items which load other forms when selected are underlined.