



Updating Broadcom Network Adapter Firmware with RDM 4.20

A White Paper

October 15, 2004

Notes:

Visit www.ibm.com/pc/safecomputing periodically for the latest information on safe and effective computing.

Warranty Information: For a copy of applicable product warranties, write to: Warranty Information, P.O. Box 12195, RTP, NC 27709, Attn: Dept. JDJA/B203. IBM makes no representation or warranty regarding third-party products or services.

Before using this information and the product it supports, read the general information in "Notices," on page 24.

© Copyright International Business Machines Corporation 2004. All rights reserved.

U.S. Government Users Restricted Rights – Use, duplication or disclosure restricted by GSA ADP Schedule Contract with IBM Corp.

Contents

Contents	3
1 Preface	5
1.1 Who should read this White Paper.....	5
1.2 Further reference.....	5
Guides.....	5
White papers.....	5
Online help.....	5
Links.....	5
2 Procedure	7
2.1 Acquire the network-adapter firmware files.....	7
2.2 Modify the UPDATE.BAT file on the firmware-update diskette.....	7
2.3 Create an image containing the firmware-update files.....	10
2.4 Create the Custom task that will deploy the Broadcom firmware	15
2.5 Test the new custom task	19
3 Notices	24
3.1 Edition notice.....	24
3.2 Trademarks	25
4 Glossary	27

1 Preface

This White Paper explains how to use IBM® Remote Deployment Manager (RDM) 4.11 to update the firmware on Broadcom® network adapters (either on-board or plug-in adapters) in a client system. You can use this document to learn how to do the following:

- Update network-adapter firmware.
- Create RDM custom tasks.
- Create RDM custom images and use them in an RDM task.
- Create RDM user parameters and use them in an RDM task.

1.1 Who should read this White Paper

This White Paper is intended to help skilled RDM administrators to create deployment procedures and to understand the concepts involved. To effectively use this White Paper, you should already have an extensive knowledge of your Network environment, your RDM environment, and DOS batch files.

1.2 Further reference

In addition to this paper, there are various other sources of information that you can consult for RDM and for RDM Custom tasks.

Guides

The following product documentation is available for RDM:

- *Remote Deployment Manager 4.20 Users Guide* – The main reference manual for RDM
- *Remote Deployment Manager 4.20 Installation Guide* – Describes the complete installation process of RDM
- *Remote Deployment Manager 4.20 Compatibility and Configuration Guide* – Lists RDM-supported hardware and software

Check the IBM Web site at <http://www-307.ibm.com/pc/support/site.wss/document.do?Indocid=MIGR-50575> to get the current versions of the above documents.

White papers

The various RDM white papers are available on the IBM Web site at <http://www-307.ibm.com/pc/support/site.wss/document.do?Indocid=MIGR-53487>.

Online help

In general, most RDM windows have online help available (except for some message windows or other windows where no help is applicable), either using a **Help** menu or a **Help** button.

Links

The following links are available for further information:

- Support is available for supported systems (IBM and non-IBM) through e-mail or fee-based telephone support. Telephone support is not available in all countries. For more information about the fee-based telephone support, go to <http://www.ibm.com/support> or <http://service.software.ibm.com/supportline.html>. For more information about e-mail support, refer to the RDM home page.

Important: Before using RDM 4.20, check the compatibility test results and browse the rest of the RDM Web site for additional information and tips concerning the installation and use of R

2 Procedure

The Custom task template is a general-purpose template that you use to create your own processes to run on a target system. Like most RDM tasks, it contains the following:

- A CommandList file containing the commands that are to be executed as part of the task.
- Executable programs and batch files commands that are to be executed as part of the task.
- An image file that contains all the supporting files that are required by the commands.

This example creates a Custom flash task for Broadcom network-adapter firmware.

2.1 Acquire the network-adapter firmware files

1. Download and create the firmware-update diskette. The firmware used to create this white paper was version 1.20.2, located at the following web site:

<http://www-306.ibm.com/pc/support/site.wss/document.do?Indocid=MIGR-53693>

2.2 Modify the UPDATE.BAT file on the firmware-update diskette

2. Open your favorite text editor (e.g., NOTEPAD.EXE) to modify file A:\UPDATE\UPDATE.BAT.
3. Add a “-all” parameter to every statement that runs b57diag (shown in **bold** in the example below). This disconnects the network adapter from the network and enables the adapter to allow b57diag to update the firmware.
4. Add a statement “GOTO NOSOL” after label “:8832” (shown in **bold** in the example below) if you want to flash without configuring SoL (Serial over LAN). This skips the execution of CP.COM, which would cause a prompt for input at the target system.

If you want to configure SoL with this task, you should add either “GOTO DEVICE0” or “GOTO DEVICE1” (whichever is appropriate), instead.

5. Add a statement “IF EXIST A:\NET\TREBOOT.EXE A:\NET\TREBOOT.EXE” after label “:done” (shown in **bold** in the example below). This forces the system to reboot immediately after B57DIAG.EXE updates the firmware. It is necessary, in order to prevent the task from hanging because the system’s network connection is no longer in effect.

```
@echo off
if "%1"=="." goto syntax
if "%1"=="?" goto syntax
if NOT EXIST %1\%1.bin goto explain
echo Loading files...

if "%1"=="..8685" goto nofirm
if "%1"=="..8835" goto 8835
if "%1"=="..8832" goto 8832

b57diag -all -firm %1\%1.bin
goto done
```

```

:nofirm
b57diag -all -c 0 -e b57kia -f %1\%1.bin -t ABCD
goto done

:8835
%1\b57diag -all -c 0 -e b57kia -errctrl c -f %1\%1.bin -t ABCD
goto done

:8832
REM *** 8832 - BEGIN
REM Force "no SoL" for RDM task.
GOTO NOSOL
REM Prompt user for SoL configure options and flash accordingly.
CLS
TYPE %1\info.txt
echo.
CP /C01NQ /N Select an option (Q to Quit):
IF ERRORLEVEL 4 GOTO DONE
IF ERRORLEVEL 3 GOTO NOSOL
IF ERRORLEVEL 2 GOTO DEVICE1
IF ERRORLEVEL 1 GOTO DEVICE0
GOTO done

:DEVICE0
ECHO Flashing Broadcom Firmware and Configuring SOL for Device 0
b57diag -all -c 0 -e b57kia -errctrl c -f %1\88320.BIN -t ABCD
GOTO done

:DEVICE1
ECHO Flashing Broadcom Firmware and Configuring SOL for Device 1
b57diag -all -c 0 -e b57kia -errctrl c -f %1\88321.BIN -t ABCD
GOTO done

:NOSOL
ECHO Flashing Broadcom Firmware without Configuring SoL
b57diag -all -c 0 -e b57kia -errctrl c -f %1\8832.BIN -t ABCD
GOTO done
REM *** 8832 - END

:explain
echo The ethernet firmware for machine type %1 is was not found.
echo The file named %1\%1.bin is required.
goto done

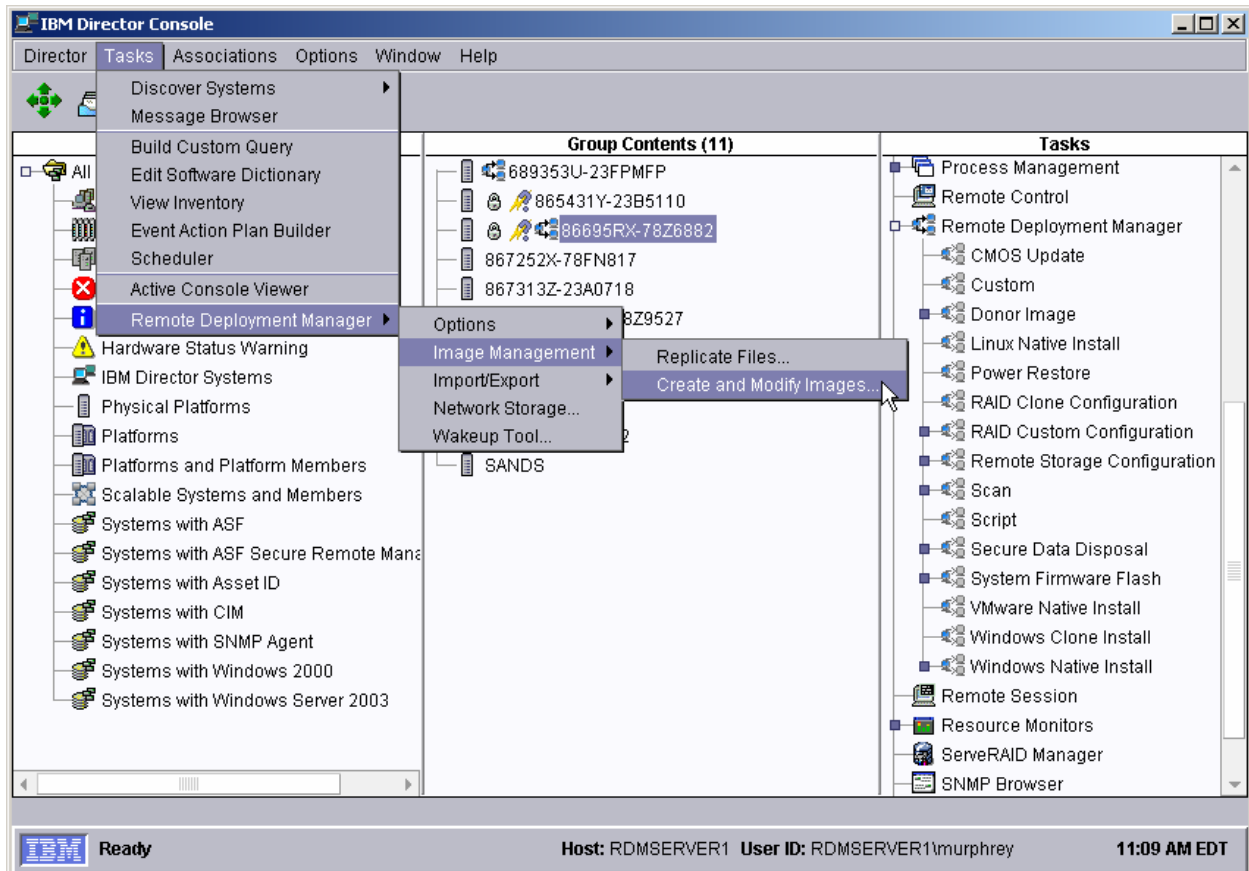
:syntax
cls
echo Use UPDATE.BAT to update the firmware. Usage is as follows:
echo.
echo UPDATE DEVICE
echo.
echo where DEVICE is the 4 digit machine type or 7 character
echo part number of the device to be updated.
echo.
echo Example: To update the ethernet firmware of and IBM 8832
echo you would type:
echo.
echo UPDATE 8832

```

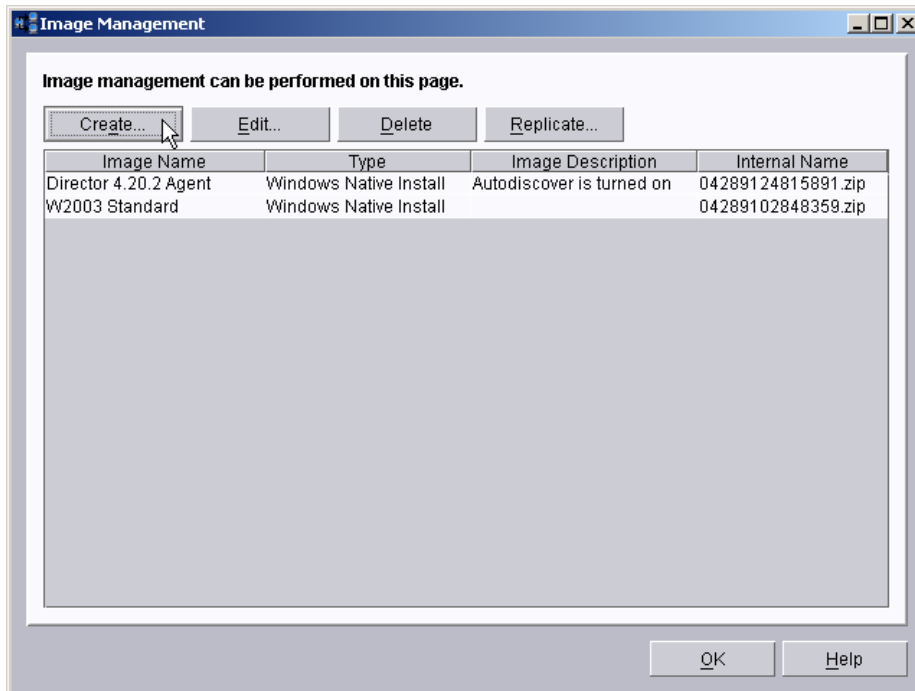


```
echo.  
echo Type LIST for a list of products that can be updated with this  
echo diskette. Type HELP to view this screen again.  
echo.  
goto end  
  
:done  
echo.  
echo Restart your computer.  
  
REM Added the following to force reboot under RDM.  
IF EXIST A:\NET\TREBOOT.EXE A:\NET\TREBOOT.EXE  
  
:end
```

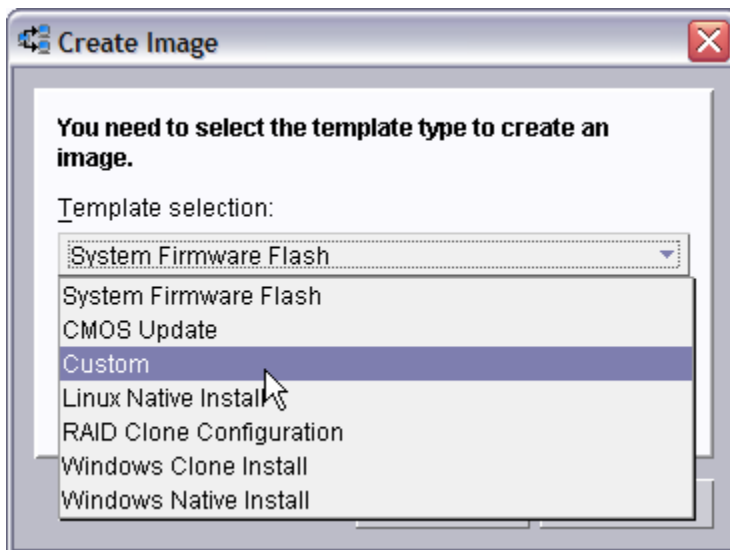
2.3 Create an image containing the firmware-update files



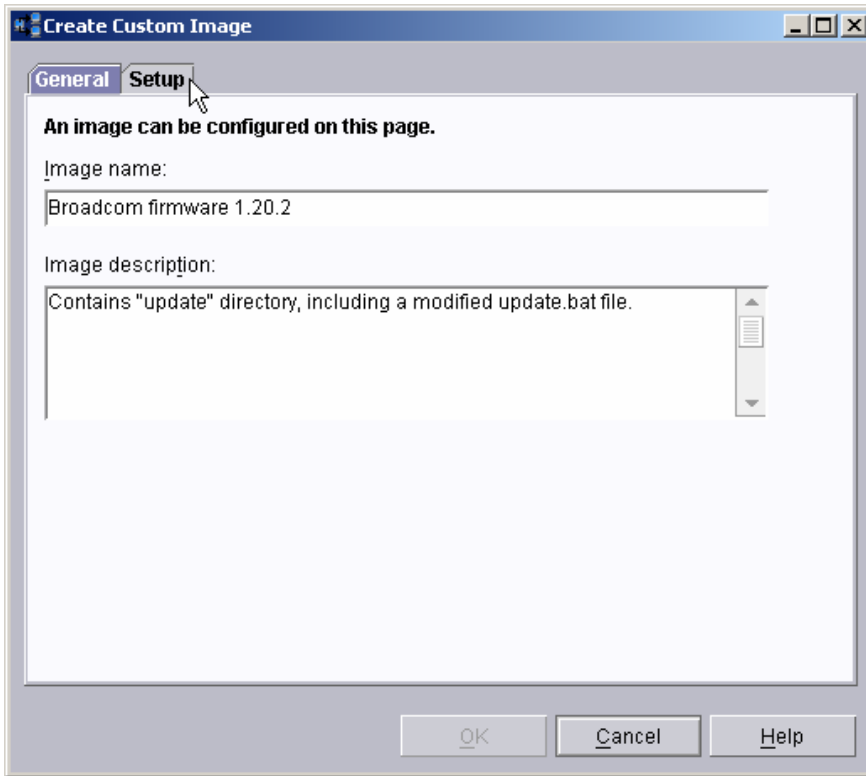
6. From the Director console, select the **Tasks, Remote Deployment Manager, Image Management...**, and **Create and Modify Images...** menus. This displays the *Image Management* window.



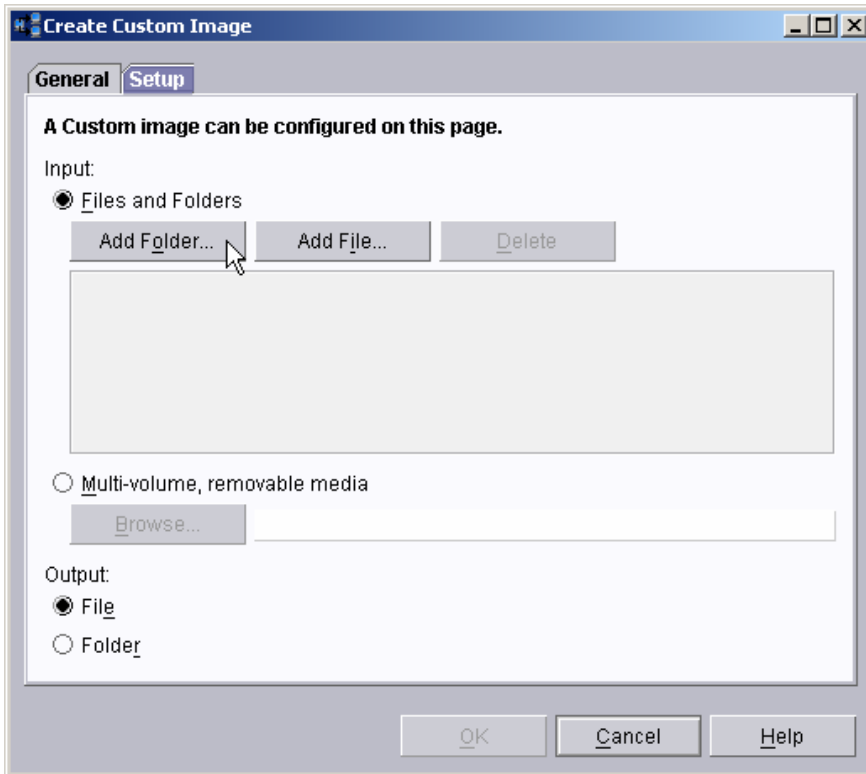
7. Select the **Create...** button. This displays the *Create Image* window.



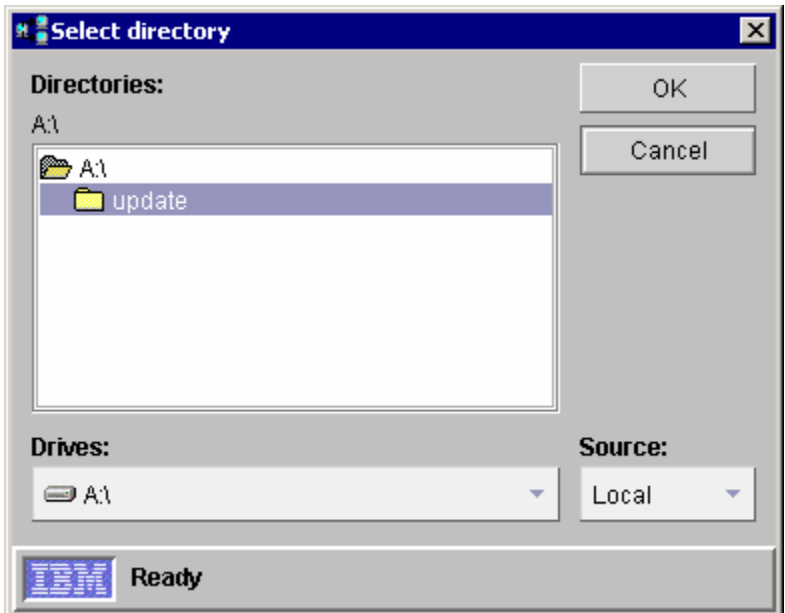
8. Select **Custom** from the drop-down list, and then select the **OK** button. This displays the *Create Custom Image* window. On the **General** tab, enter a name and (optionally) a description.



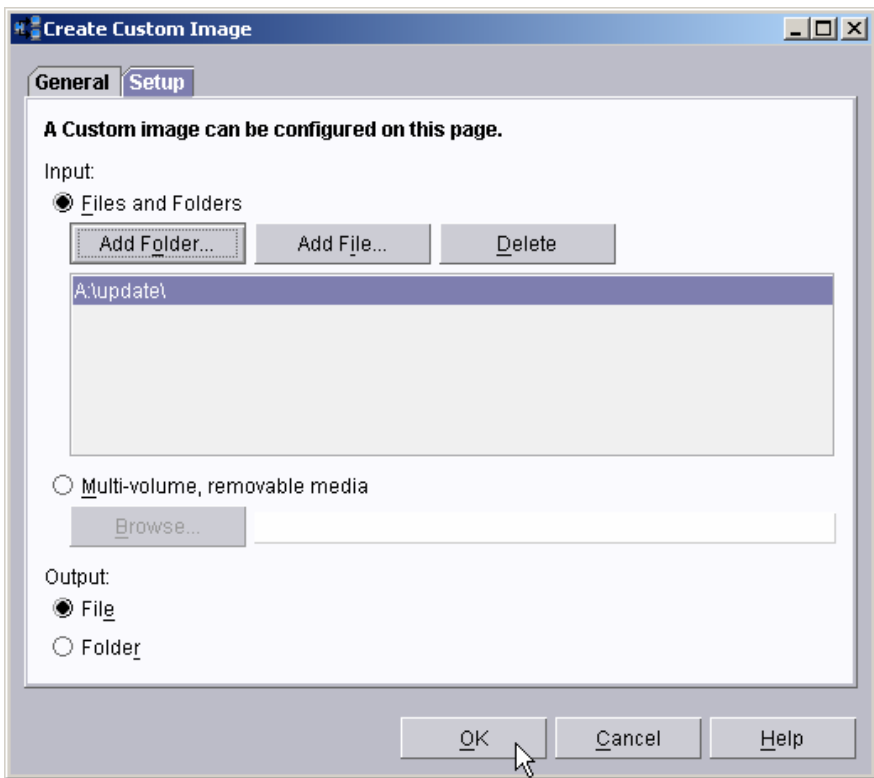
9. Select the **Setup** tab, and then select the **Add Folder...** button.



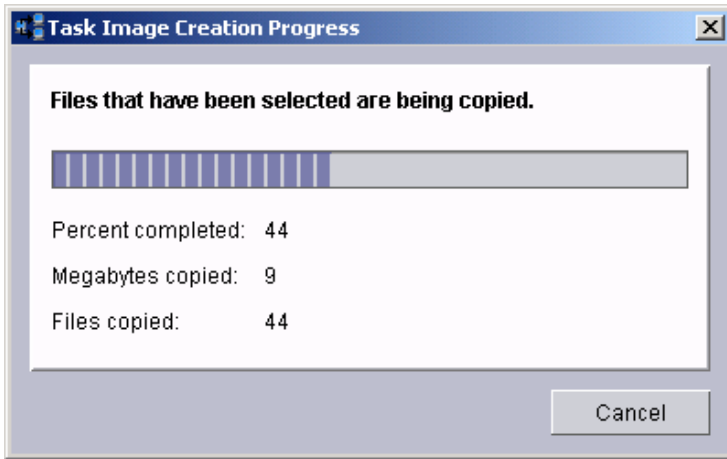
10. This displays a file dialog window named *Select Directory*. Navigate to and select the *A:\update* directory. Then select the **OK** button.



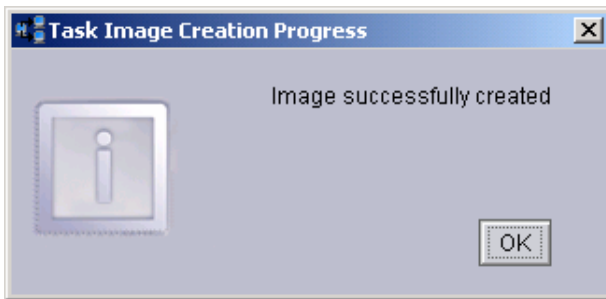
11. On the **Setup** page of the *Create Custom Image* window, select the **File** radio button. This will cause RDM to create the image as a single ZIP file. Then select the **OK** button.



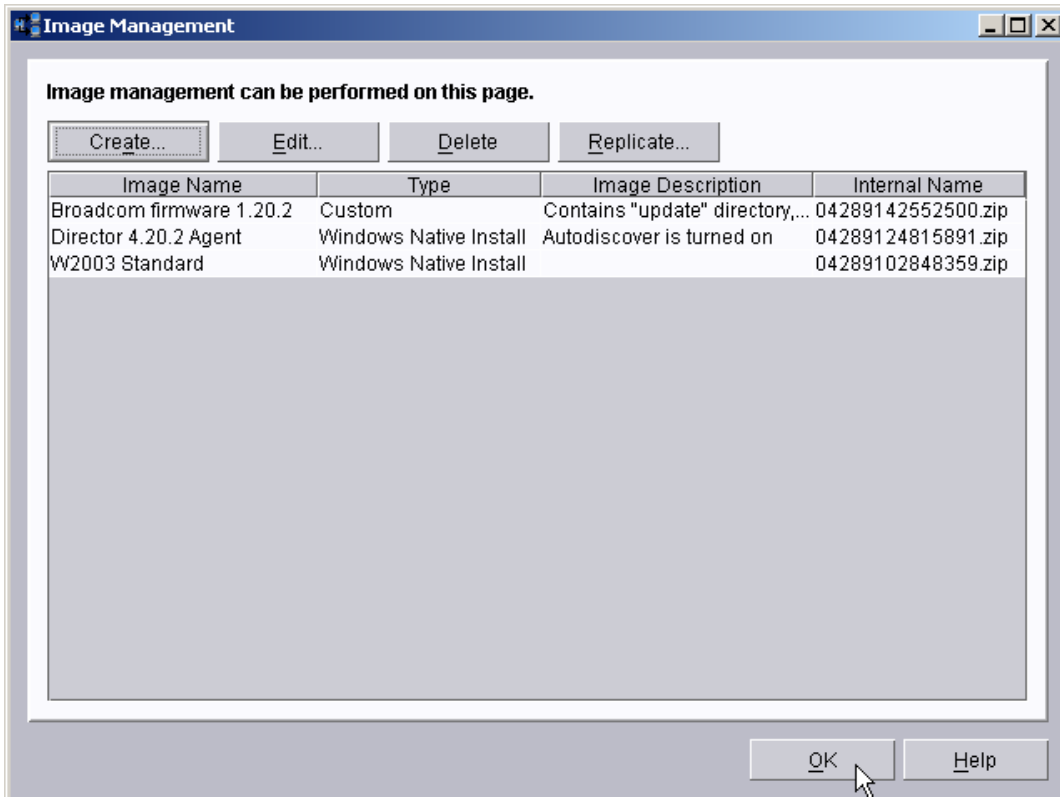
12. The *Task Image Creation Progress* window displays.



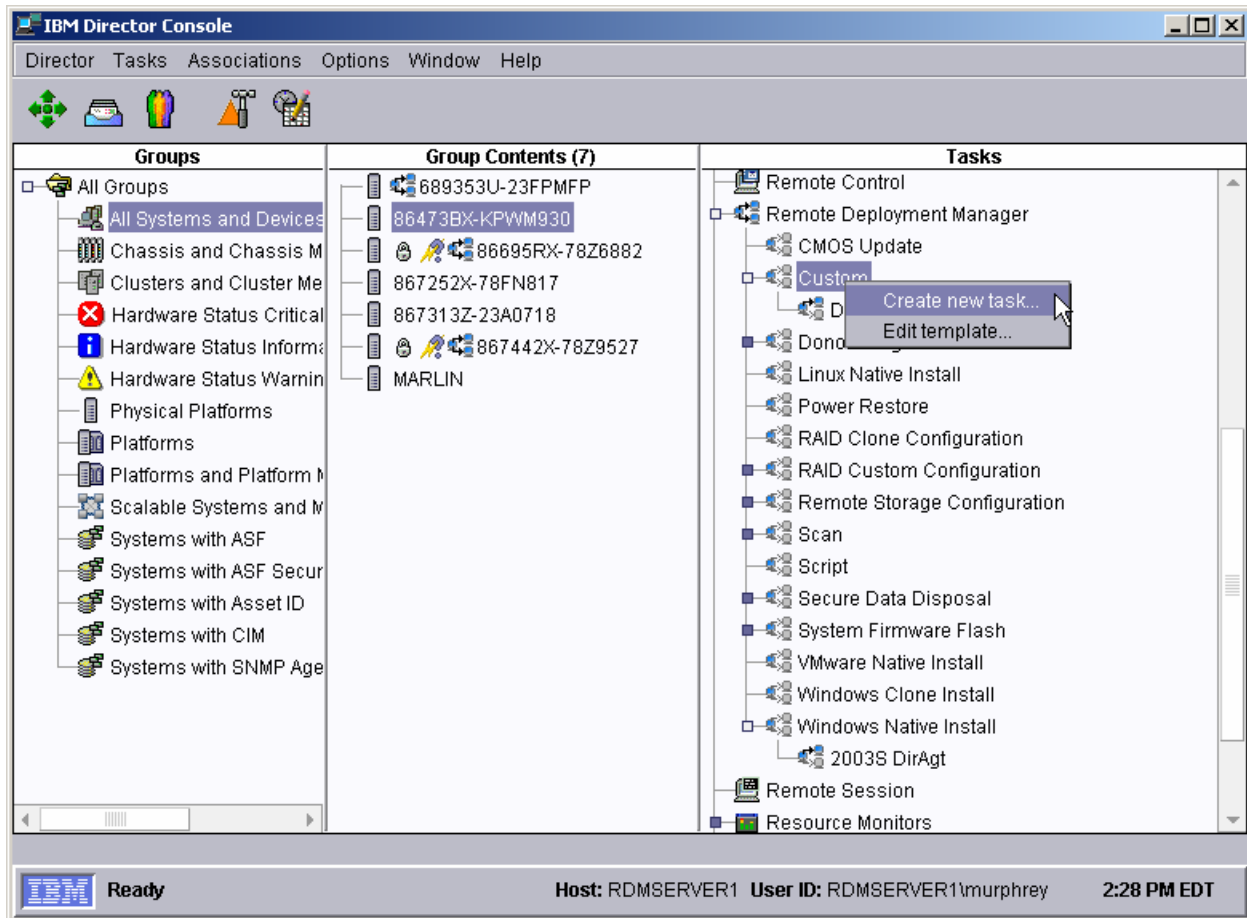
13. When the copying is complete, a message window displays.



14. After the image creation is done, select the **OK** button on the *Task Image Creation Progress* window. The main *Image Management* window will now contain an entry for the new image.



2.4 Create the Custom task that will deploy the Broadcom firmware

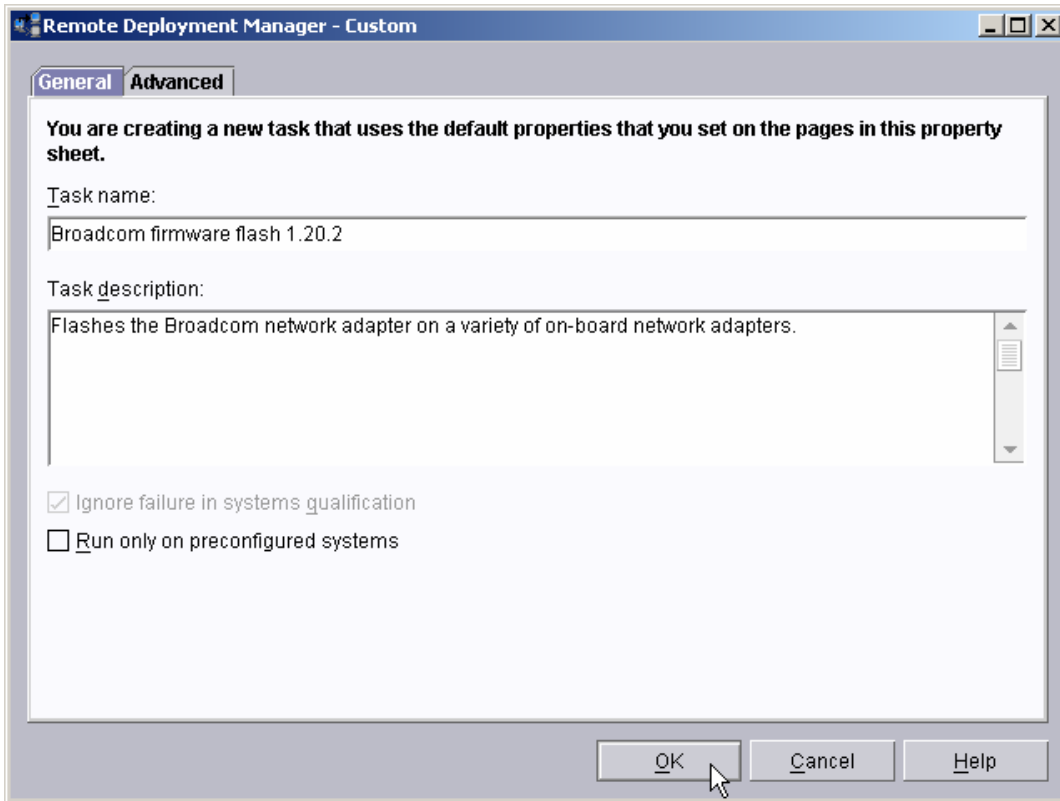


15. Expand **Remote Deployment Manger** in the *Tasks* pane of the Director console, and right-click **Custom**. The menu is displayed.

16. Click **Create new task...** on the menu to access the property pages. There are two pages:

- **General:** Contains basic information about the task.
- **Advanced:** Contains the command list, user parameters, and task folder name for the task.

Enter the task information on the *General* page (e.g., name the task *Broadcom Firmware Flash* and enter an appropriate task description).



17. Click the **Advanced** tab, and modify the command list this way:

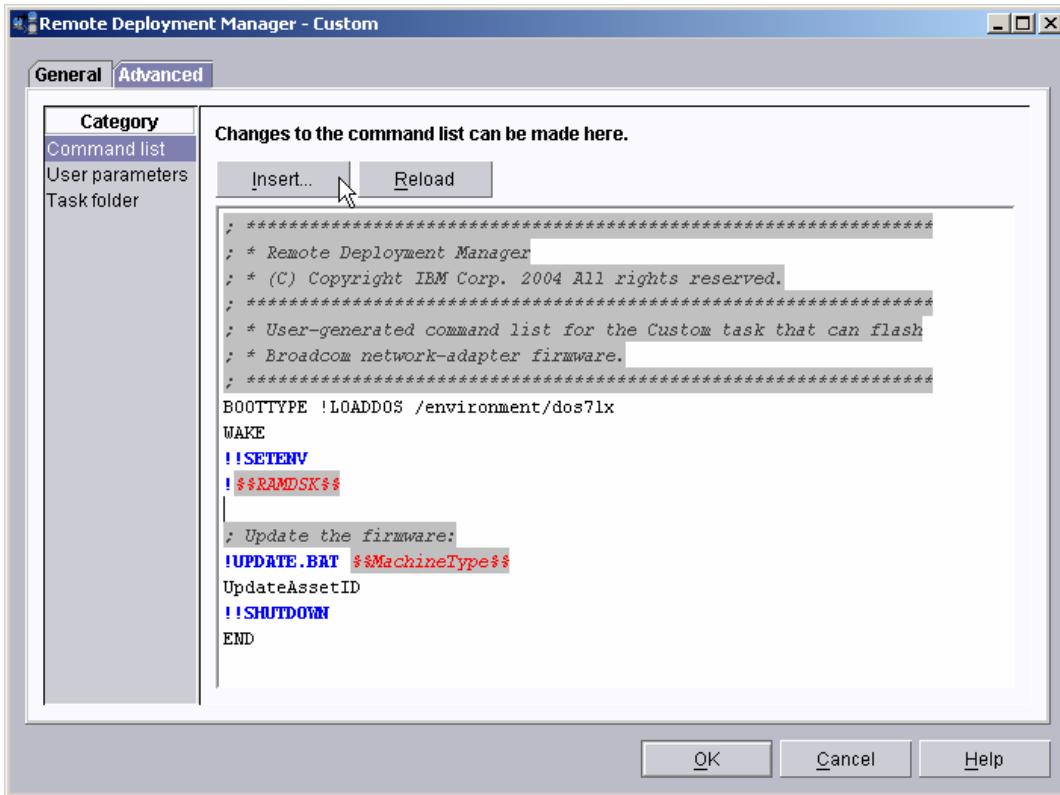
```

; *****
; * Remote Deployment Manager
; * (C) Copyright IBM Corp. 2004 All rights reserved.
; *****
; * User-generated command list for the Custom task that can flash
; * Broadcom network-adapter firmware.
; *****
BOOTTYPE !LOADDOS /environment/dos71x
WAKE
!!SETENV
!%%RAMDSK%%

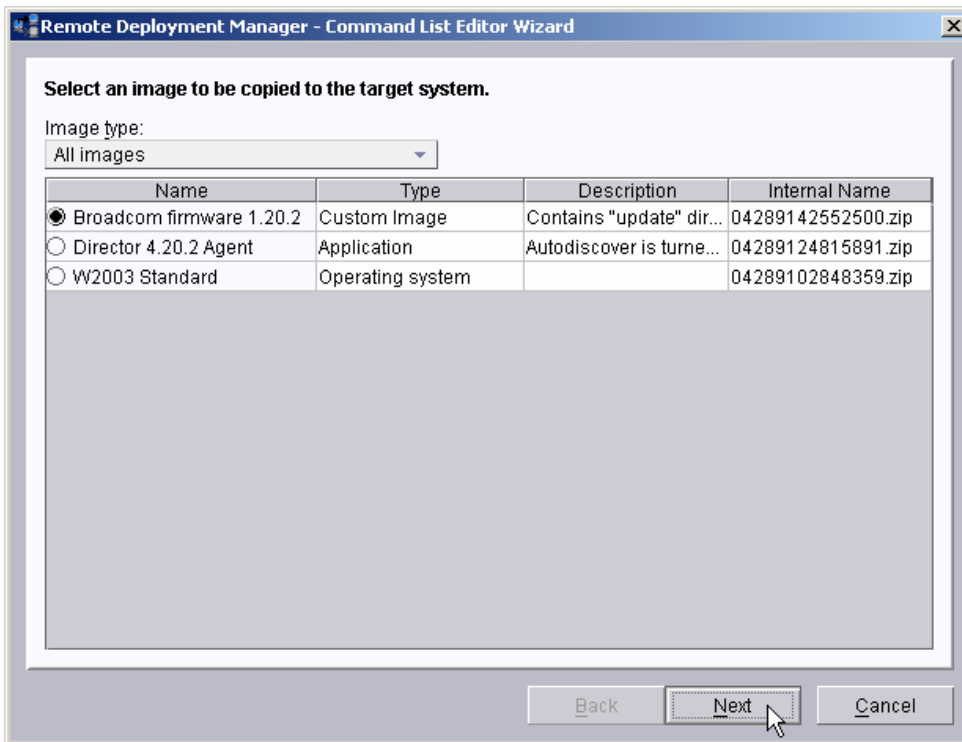
; Update the firmware:
!UPDATE.BAT %%MachineType%%
UpdateAssetID
!!SHUTDOWN
END

```

The command list is a list of RDM and DOS commands that perform the Custom task. Refer to Appendix A, “Command list commands”, in the *Remote Deployment Manager 4.20 User’s Reference* for information on commands and syntax within a command list.



- Place the cursor on the blank line (see the picture above), and select the **Insert** button. The *Command List Editor Wizard* window appears.



19. Select the custom image that you created in step 2.3 above, and then select the **Next** button.

The screenshot shows a Windows-style dialog box titled "Remote Deployment Manager - Command List Editor Wizard". The main area is titled "Build commands to insert into the command list editor." and contains the following fields and controls:

- Target operating system:** A dropdown menu with "DOS" selected.
- Transfer mode:** Two radio buttons: "Unicast" (selected) and "Multicast".
- Comment:** A text input field containing "Download the firmware image:".
- MTFTP destination file path:** A text input field containing "%%RAMDSK%%".
- MTFTP destination file name:** A text input field containing "BCOMFW.ZIP".
- Generate an unzip command:** A checked checkbox.
- Unzip destination path:** A text input field containing "%%RAMDSK%%".
- Generated commands:** A text area containing the following commands:

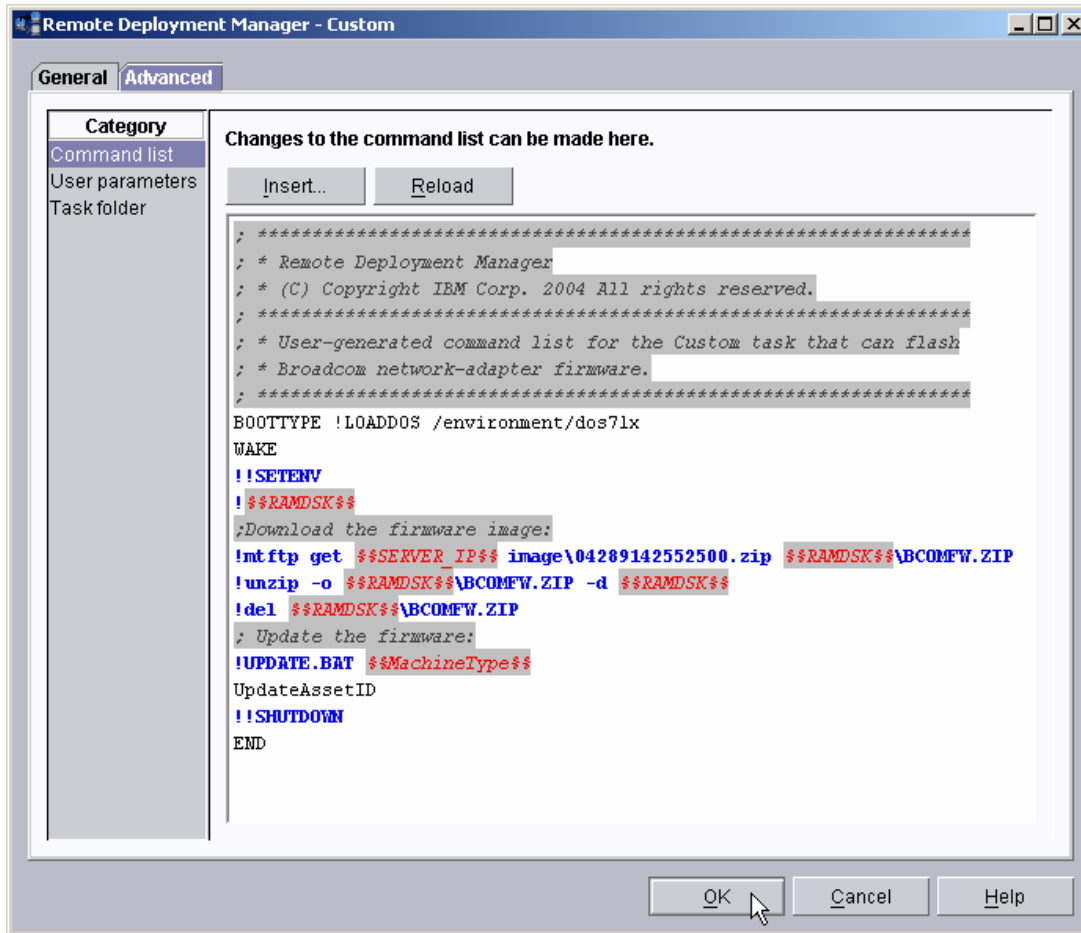
```
;Download the firmware image:
!mtftp get %%SERVER_IP%% image\04289142552500.zip %%RAMDSK%%\BCOMFW.ZIP
!unzip -o %%RAMDSK%%\BCOMFW.ZIP -d %%RAMDSK%%
!del %%RAMDSK%%\BCOMFW.ZIP
```

At the bottom of the dialog are three buttons: "Back", "Finish", and "Cancel". A mouse cursor is pointing at the "Finish" button.

20. Enter the appropriate data to generate the correct commands to download and unzip the custom image you created in section 2.3 above:

- o Select DOS as the target operating system.
- o Leave the transfer mode as Unicast.
- o Add an optional comment, if you like.
- o Enter the path and name that you want the image file to have on the target system.
- o Select the check box to generate an unzip command, and enter the path for the unzipped files.

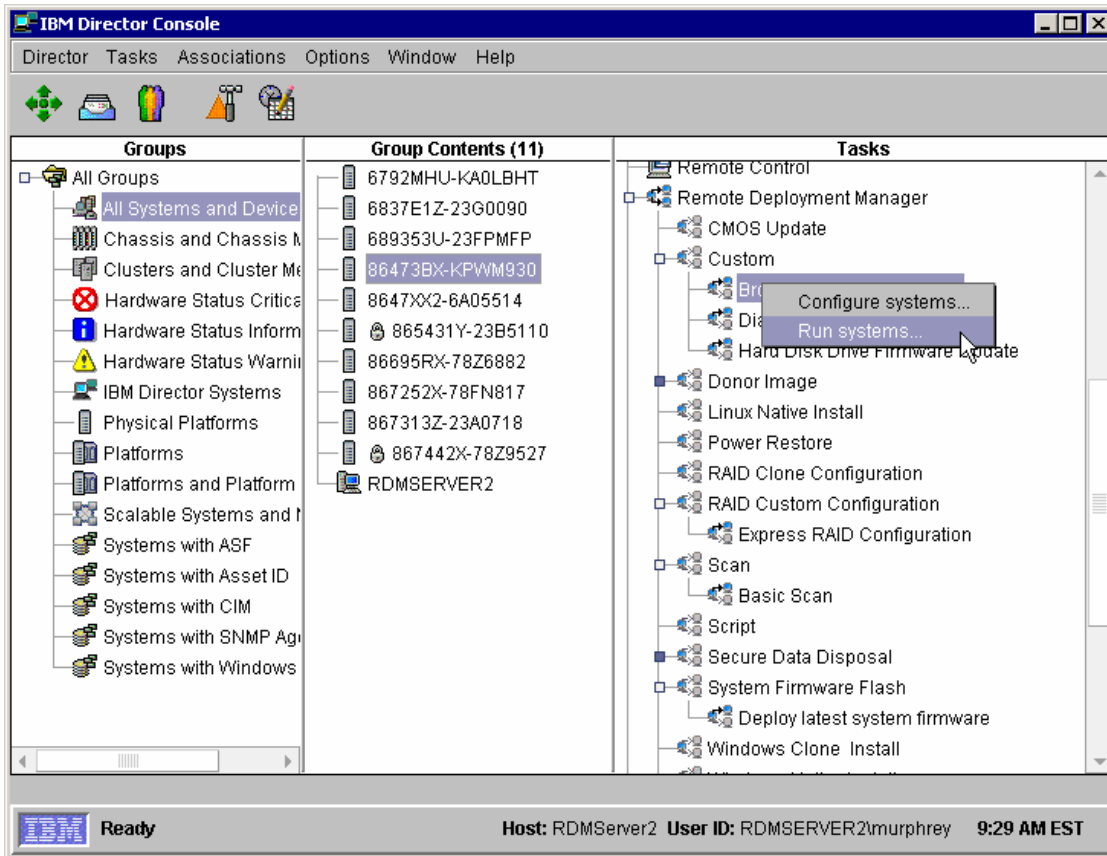
21. Select the *Finish* button to add the generated commands to the command list.



2.5 Test the new custom task

22. Drag an entry for a model-8647 system and drop it on the new *Broadcom Firmware Flash* task in the right pane. The menu appears. Click **Run systems ...** in the menu. A message window appears. Because model 8647 is the default for this task, we do not need to select **Configure systems...** for the initial testing.

Note: You could, instead, drag the task and drop it on the system – the Director/RDM drag/drop operation works the same way in either direction.



23. Click the **Execute now** button. The target system will wake up (i.e., automatically power itself on) and do a network boot.

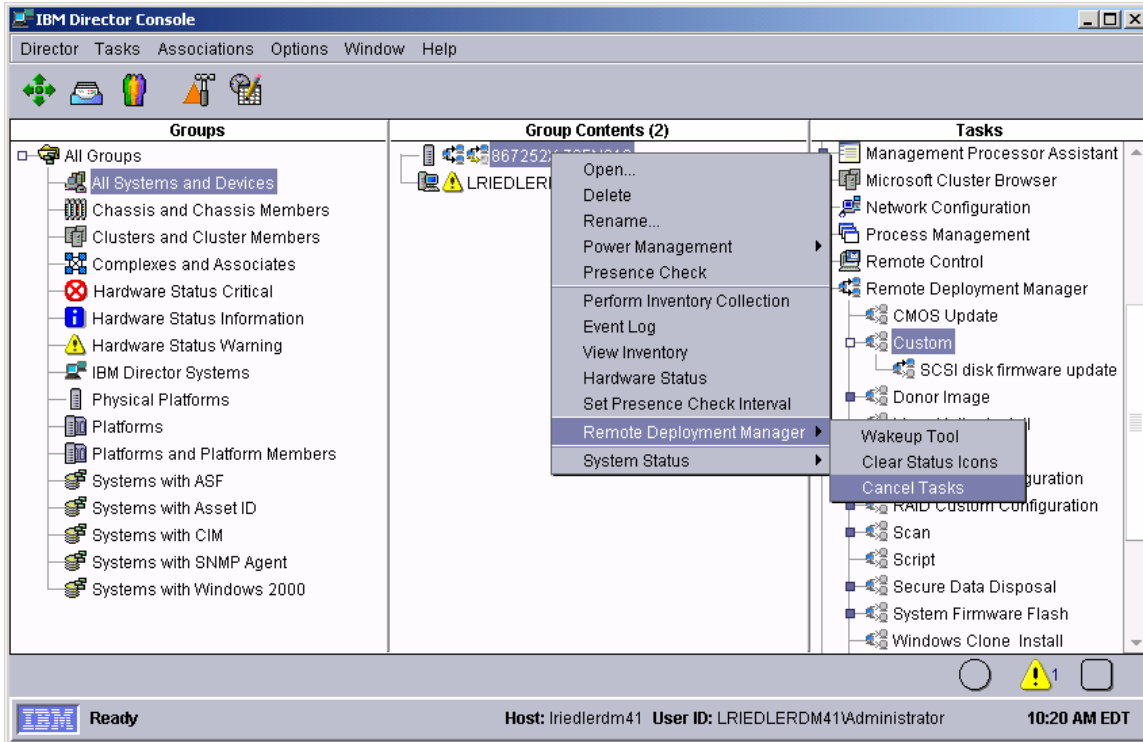


24. Immediately after the *Starting PC DOS...* message appears on the system's monitor, press the F8 key. This allows you to step through all of the batch files statement-by-statement.
25. Press the "y" key to execute each statement in-turn. Observe each statement, and watch for any errors that may occur.

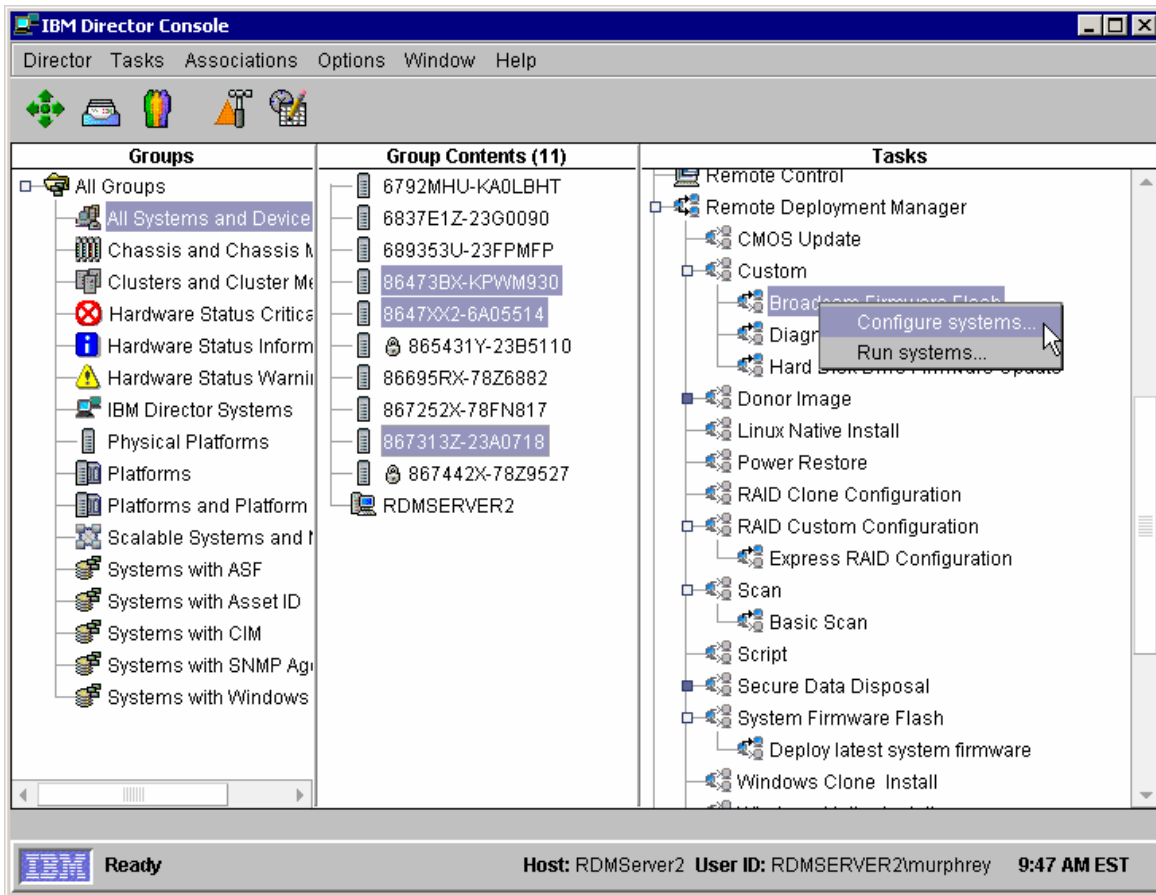
Note: If an error occurs, debug it, fix it as appropriate (usually in one of the files you created or modified above), and then rerun the test.

To rerun the test, you will usually need to do the following:

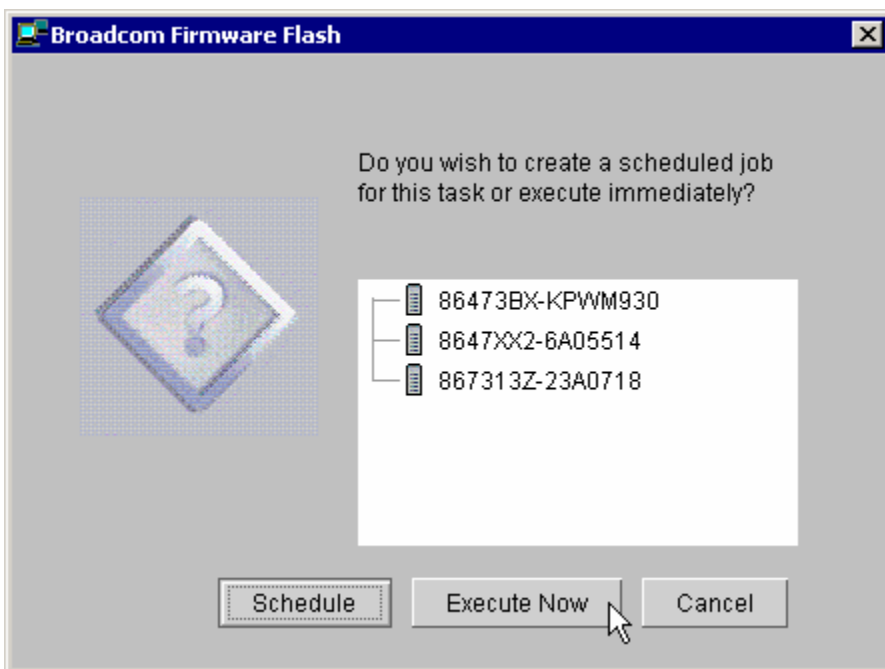
- a. Power off the server with the power switch.
- b. Right-click on the server in the middle pane.
- c. Click the **Remote Deployment Manager** and the **Cancel Tasks** menu items.
- d. Go back to step 22 above.



26. Select several systems, including one that is not a model-8647 system, and drop them on the new *Broadcom Firmware Flash* task in the right pane. The menu appears. Click **Run systems...** in the menu.



27. Click the **Execute now** button. The target systems will wake up (i.e., automatically power themselves on) and do a network boot.



28. You should observe one of the systems to make sure that the firmware flashes properly. When the task is complete, the systems will automatically power off.

3 Notices

This information was developed for products and services offered in the U.S.A.

IBM might not offer the products, services, or features discussed in this document in other countries. Consult your local IBM representative for information on the products and services currently available in your area. Any reference to an IBM product, program, or service is not intended to state or imply that only that IBM product, program, or service might be used. Any functionally equivalent product, program, or service that does not infringe any IBM intellectual property right might be used instead. However, it is the user responsibility to evaluate and verify the operation of any non-IBM product, program, or service.

IBM might have patents or pending patent applications covering subject matter described in this document. The furnishing of this document does not give you any license to these patents. You can send license inquiries, in writing, to:

*IBM Director of Licensing
IBM Corporation
North Castle Drive
Armonk, NY 10504-1785
U.S.A.*

INTERNATIONAL BUSINESS MACHINES CORPORATION PROVIDES THIS PUBLICATION "AS IS" WITHOUT WARRANTY OF ANY KIND, EITHER EXPRESS OR IMPLIED, INCLUDING, BUT NOT LIMITED TO, THE IMPLIED WARRANTIES OF NON-INFRINGEMENT, MERCHANTABILITY OR FITNESS FOR A PARTICULAR PURPOSE. Some states do not allow disclaimer of express or implied warranties in certain transactions, therefore, this statement might not apply to you.

This information could include technical inaccuracies or typographical errors. Changes are periodically made to the information herein; these changes will be incorporated in new editions of the publication. IBM might make improvements and/or changes in the product(s) and/or the program(s) described in this publication at any time without notice.

Any references in this information to non-IBM Web sites are provided for convenience only and do not in any manner serve as an endorsement of those Web sites. The materials at those Web sites are not part of the materials for this IBM product, and use of those Web sites is at your own risk.

IBM might use or distribute any of the information you supply in any way it believes appropriate without incurring any obligation to you.

Some software might differ from its retail version (if available) and might not include all user manuals or all program functionality.

IBM makes no representations or warranties regarding third-party products or services.

3.1 Edition notice

© COPYRIGHT INTERNATIONAL BUSINESS MACHINES CORPORATION, 2003, 2004. All rights reserved.

Note to U.S. Government Users Restricted Rights — Use, duplication or disclosure restricted by GSA ADP Schedule Contract with IBM Corp.

3.2 Trademarks

The following terms are trademarks of International Business Machines Corporation in the United States, other countries, or both:

IBM

IBM (logo)

Asset ID

IntelliStation

LANClient Control Manager

Netfinity

ServeRAID

ThinkPad

Wake on LAN

xSeries

Adaptec is a trademark of Adaptec Inc. in the United States, other countries, or both.

Microsoft, Windows, and Windows NT are trademarks of Microsoft Corporation in the United States, other countries, or both.

Other company, product, or service names might be trademarks or service marks of others.

4 Glossary

BAT file. A file that contains a batch program (that is, a set of commands).

bind. Associating one or more systems to a task. This causes all information to be verified (by one of the STC modules) and a resulting job to be scheduled to run.

console, or RDM Console. The group of programs that make up the user interface to RDM. RDM is client/server in nature so that the Console might run on any computer and not necessarily be running on the same computer as the RDM server or other RDM components. The RDM Console is actually an IBM Director Console on which the RDM Console component is installed.

image. An image is the software stored on a deployment server that is downloaded to a system during an operation. Images vary in size and in the type of software they provide to the system. The purpose and content of each image depends on the task to be accomplished, as well as the method used to download the image from the deployment server to the system. A *native* image is built off a product installation CD. A *clone* image is copied from a donor system.

job. An object managed by the scheduler and created by STC. A job is a binding of one task and one or more systems. A job can be scheduled to run once or to recur. Sometimes a job is called by a different name (Scheduled Task, Running Task), to emphasize some aspect of the job.

managed system. The IBM Director term for its system. Mentioned here only for clarity; the term *system* is preferred when referring to an RDM system.

preboot DOS agent. The preboot DOS agent is a DOS operating system with a communications stack that is booted from the network by the bootstrap agent. The preboot DOS agent performs actions on a system as directed by the RDM server.

Preboot Execution Environment (PXE). PXE is an industry standard client/server interface that allows networked computers that are not yet loaded with an operating system to be configured and booted remotely. PXE is based on Dynamic Host Configuration Protocol (DHCP). Using the PXE protocol, clients can request configuration parameter values and startable images from the server.

The PXE process consists of the system initiating the protocol by broadcasting a DHCPREQUEST containing an extension that identifies the request as coming from a client that uses PXE. The server sends the client a list of boot servers that contain the operating systems available. The client then selects and discovers a boot server and receives the name of the executable file on the chosen boot server. The client downloads the file using Trivial File Transfer Protocol (TFTP) and executes it, which loads the operating system.

Redundant Array of Independent Disks (RAID). RAID is way of storing the same data in different places (thus, redundantly) on multiple hard disks. By placing data on multiple disks, I/O operations can overlap in a balanced way, improving performance. Multiple disks increase the mean time between failure (MTBF) and storing data redundantly increases fault-tolerance.

system. An individual, target system being deployed or managed by RDM. In IBM Director terminology, an RDM system is always a platform managed object. These can represent any of the supported-by-RDM systems. They cannot represent an IBM Director object that RDM does not process, such as a chassis or an SNMP object.

task. An already defined and configured unit of work that is available to be applied to a system or a group (of systems). You create a task by clicking on the applicable task template from the RDM main console. RDM is installed with predefined tasks, such as data disposal and scan.

task template. A prototype of a specific kind of RDM task. This is a term used to describe the different kinds of tasks shown on the task pane in the main window of the RDM console. Each task template has its own characteristics and attributes. RDM comes with a set of task templates.

Wake on LAN. Technology developed by IBM that allows LAN administrators to remotely power up systems. The following components are essential for the Wake on LAN setup:

- Wake on LAN-enabled network interface card (NIC).
- Power supply that is Wake on LAN-enabled.
- Cable which connects NIC and power supply.
- Software that can send a magic packet to the system.

If the system has the first three of the previous components, the system is called a Wake on LAN-enabled system. Even though a system might be powered off, the NIC keeps receiving power from the system power supply to keep it alive. A network administrator sends a magic packet to the system through some software, for example, RDM or Netfinity IBM Director. The NIC on the system detects the magic packet and sends a signal to the power supply to turn it on. This process is also called *waking up the system*. Using RDM, this process can be scheduled for individual systems. The Wake on LAN feature and RDM together make it very easy for you to deploy software on individual systems on a scheduled basis.



48P9926

Printed in U.S.A.