

VIEW OF UNDERSIDE OF MOTHERBOARD
SHOWING ASSEMBLY SOCKET NUMBERS

VIEW OF ASSEMBLY SIDE OF MOTHERBOARD
WITH INSULATOR REMOVED TO SHOW TRACK
PATTERN AND ASSEMBLY SOCKET NUMBERS

Fig 2002 - RT-349 motherboard printed circuit connections

Note: These Pages 1011 and 1012 supersede Pages 1011 and 1012 Issue 2 dated Sept. 78. Fig 2003 has been completely revised.

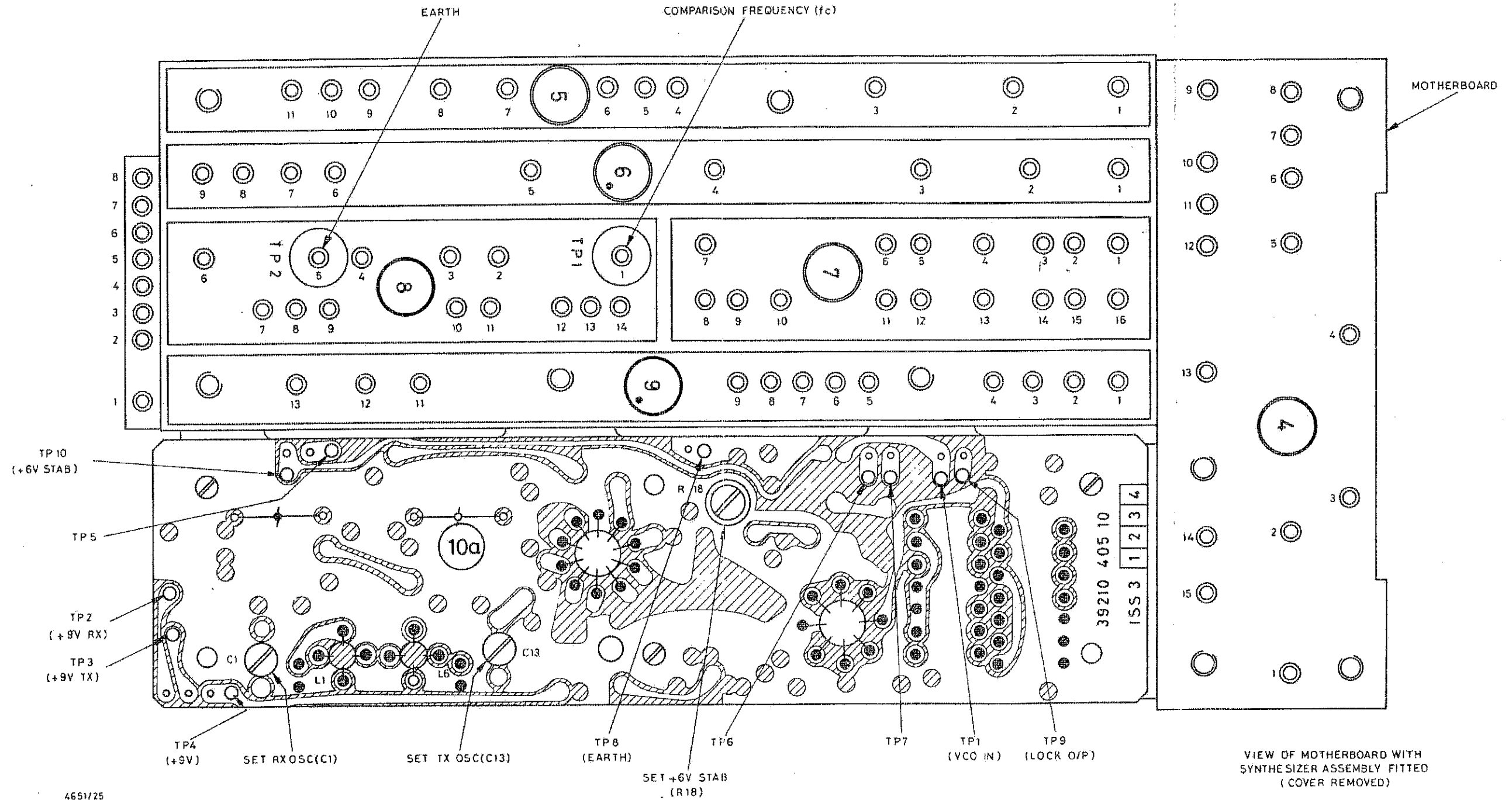


Fig 2003 - Location of test points and synthesizer preset controls

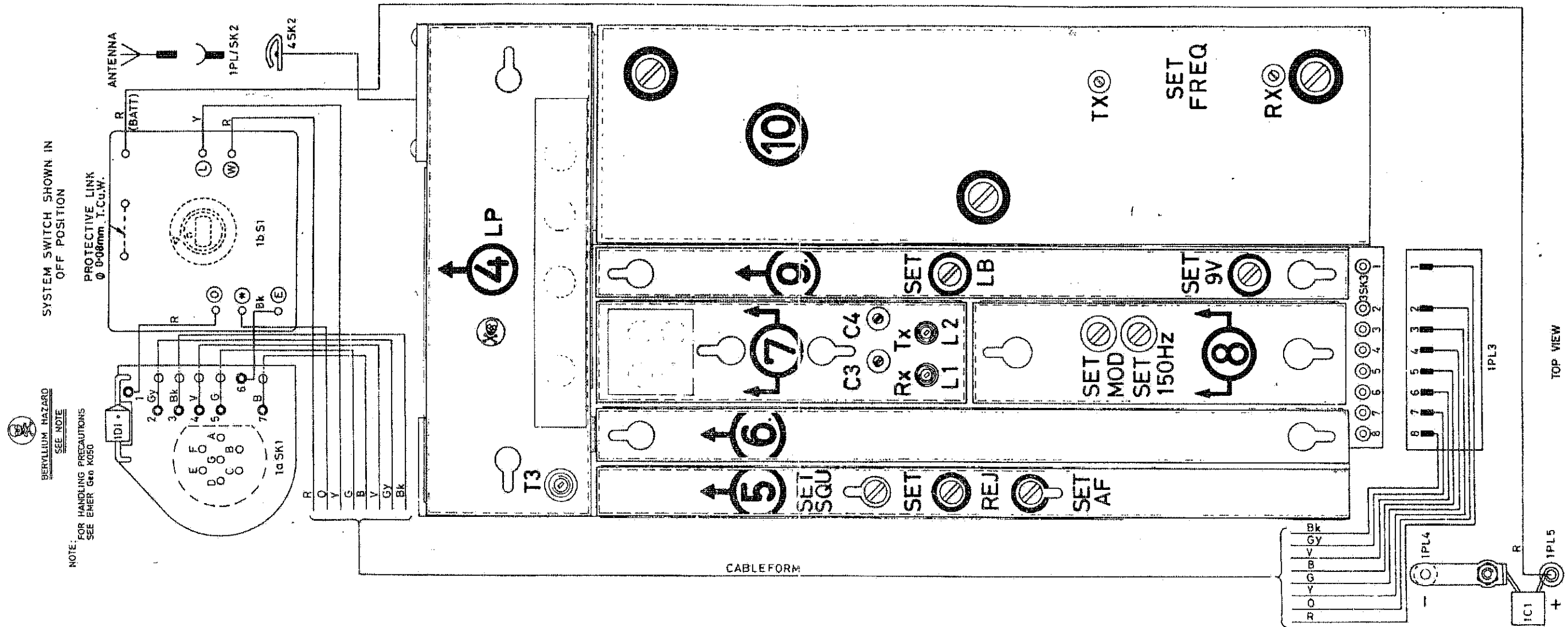
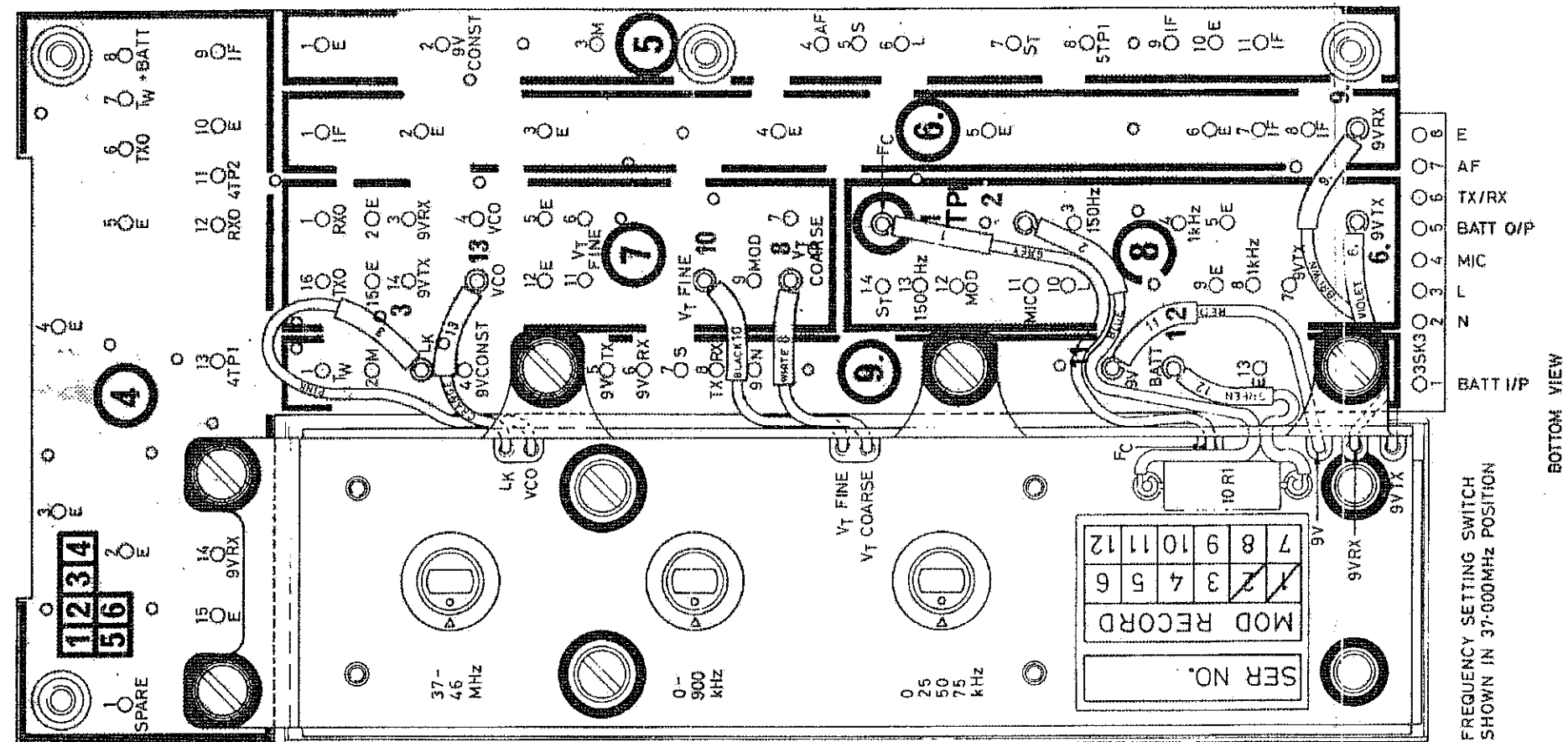


Fig 2004 - RT-349 wiring diagram, top view



FREQUENCY SETTING SWITCH
SHOWN IN 37-600MHz POSITION

BOTTOM VIEW

Fig 2005 - RT-349 wiring diagram, bottom view



