

SCHEMATIC OF RADIO TRANSMITTER BC-684-BM

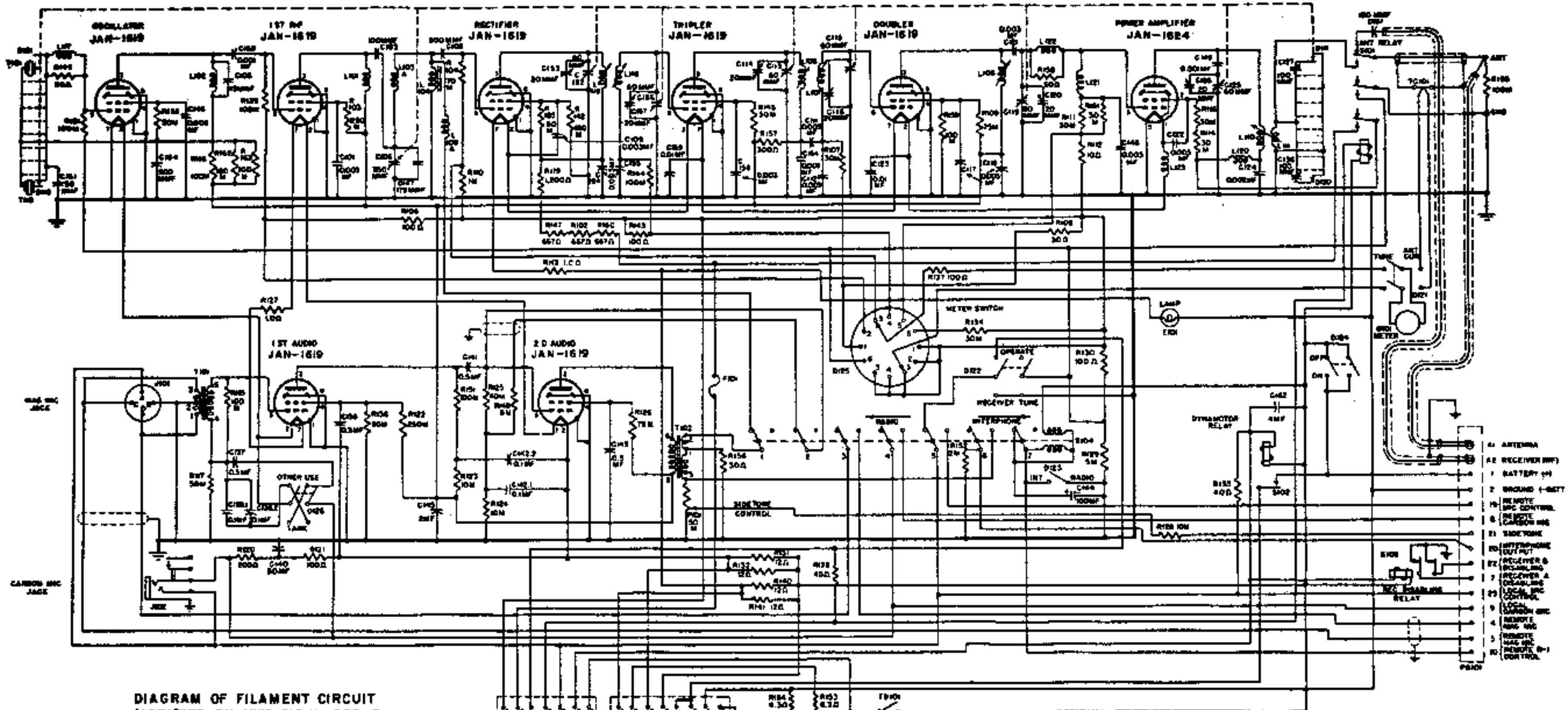
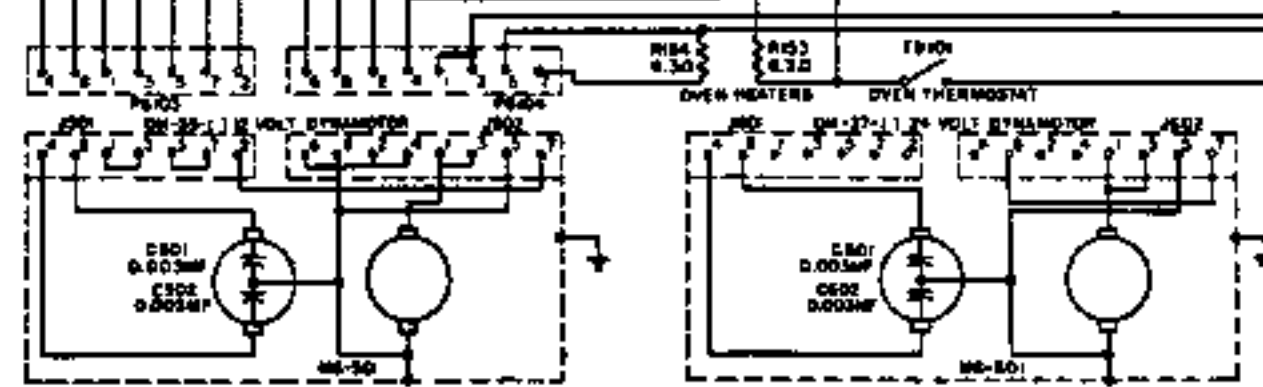
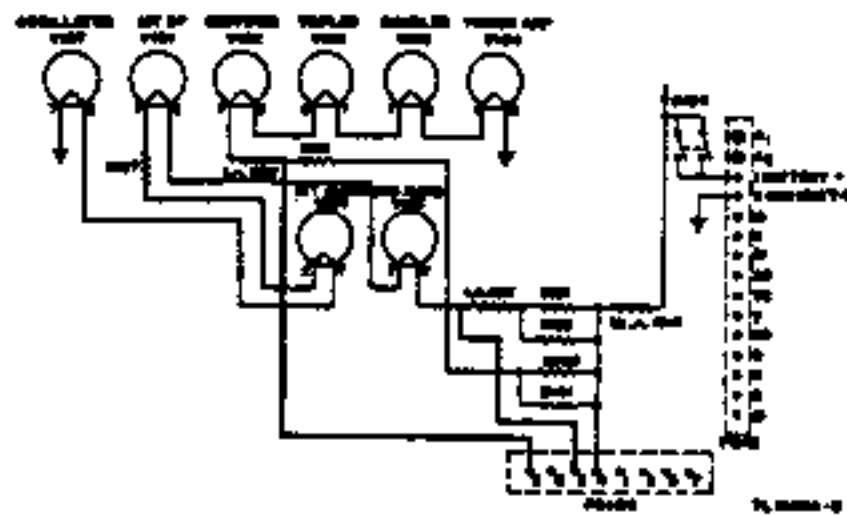


DIAGRAM OF FILAMENT CIRCUIT MODIFIED BY MWO SIG II-620-2



NOTES:
 * IS SYMBOL FOR FIXED CAPACITOR
 * IS SYMBOL FOR VARIABLE CAPACITOR
 M = 1,000 OHMS

BC-684-A MODIFICATIONS

R 133 80 Ω R 148 NOT USED.
 R 135 30 Ω
 INTERPHONE-RADIO SWITCH NOT USED
 S103 IN PARALLEL WITH S101

BC-684-B MODIFICATIONS

R 133 80 Ω
 R 135 30 Ω
 S103 IN PARALLEL WITH S101

Downloaded by
RadioAmateur.EU