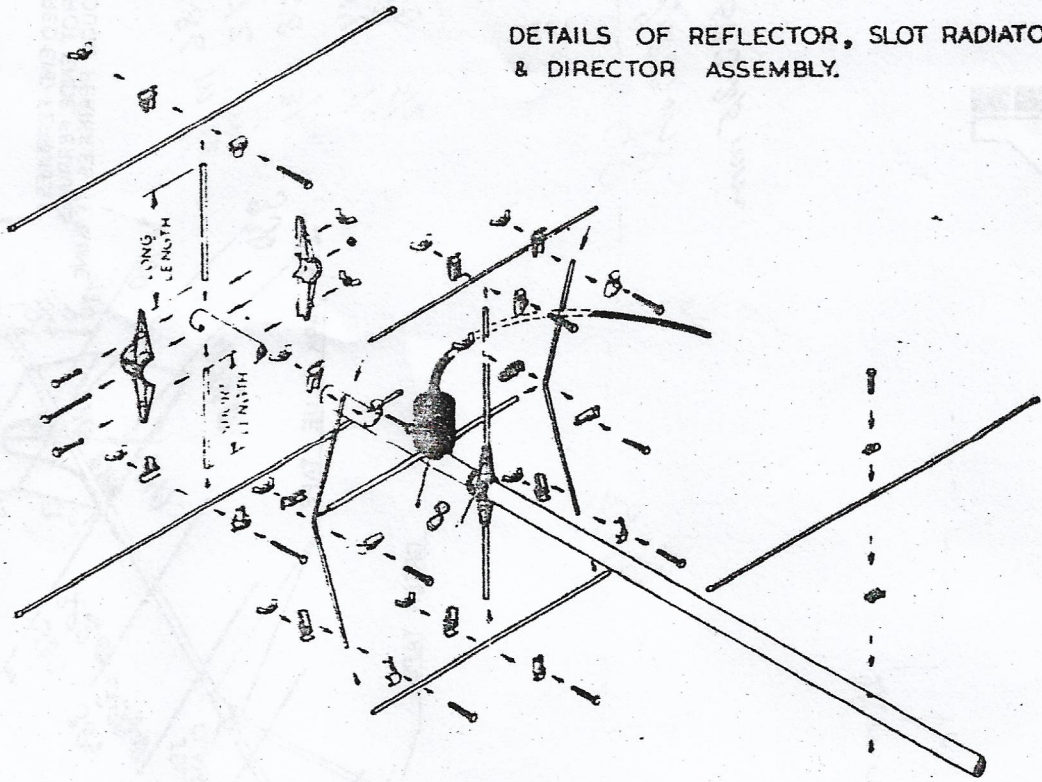


Rothersthorpe Trading Estate Northampton NN4 9JD (Reg. office)
tel: 63531 (std 0604) telex: 311101
Member of the J. Beam Group of companies Reg No. 867674 England

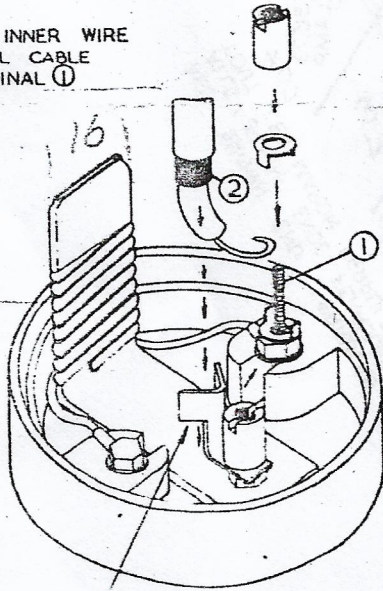
DETAILS OF REFLECTOR, SLOT RADIATOR
& DIRECTOR ASSEMBLY.



LENNART PETERSSON SM7ENC
Furuvägen 10, S-71 00 Karlskrona
Tel. 0455/205 68

CONNECT INNER WIRE
OF COAXIAL CABLE
TO TERMINAL ①

*8,5 volt
antennindukt*



PINCH CLIP AROUND
OUTER BRAID ② OF
COAXIAL CABLE.

NOT TO SCALE

TYPE PBM14/2M
FREQUENCY 2 Metres
IMPEDANCE 50 OHMS

JAYBEAM LIMITED RESERVE THE RIGHT TO ALTER SPECIFICATIONS WITHOUT NOTICE.
©JAYBEAM. NO COPYING IN ANY FORM WHATSOEVER WITHOUT PRIOR PERMISSION.

PBM 14\2M PACKING DETAILS

- | | | | | |
|-------------|------------------|---|----|-----|
| 1) MPC 23 | Castings | - | 4 | off |
| 2) MPC 8 | Cap castings | - | 13 | off |
| 3) MPC 10 | Saddle castings | - | 13 | off |
| 4) MPC 22 | T-casting | - | 9 | off |
| 5) MPC 54 | T-casting | - | 13 | off |
| 6) 1½x2 BA | Mild Steel Screw | - | 9 | off |
| 7) 1"x2 BA | Mild Steel Screw | - | 7 | off |
| 8) 2¼" x ¼" | Mild Steel Screw | - | 3 | off |
| 9) 2 x 2 BA | Mild Steel Screw | - | 13 | off |
| 10) 2 BA | Wing nut | - | 30 | off |
| 11) ¼" | Plain Whit nut | - | 3 | off |

PACKED BY

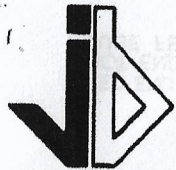
- Items 1, 8, 11, 6 & 10
 Items 2, 3, 9 & 10
 Items 4, 6 & 10
 Items 5, 7 & 10

} Are assembled together and packed into a plastic bag

FINAL PACK

- 1 Section of boom coded with RED end plug and DARK BLUE tape
- 1 Section of boom coded with DARK BLUE and GREEN tape
- 1 Section of boom coded with GREEN and LIGHT BLUE tape
- 1 Section of boom coded with LIGHT BLUE tape and a GREY end plug
- 12 Directors coded with BROWN end ferrules
- 2 Reflectors coded with RED end ferrules
- 1 Reflector support LONG
- 1 Reflector support SHORT
- 1 Slot support LONG
- 1 Slot support SHORT
- 1 Delta assembly complete with M40 BALUN & SLEEVE
- 2 JBL 56 Clamps
- 1 JBL 73 Clamp
- 1 Bridge pressing & V-bolt
- 1 Bag of castings
- 1 Assembly drawing
- 2 45° Supports

IMP	50 Ω
	75 Ω



Jaybeam Limited
 Moulton Park
 Northampton NN3 1QQ England
 Tel. (0604) 46611
 Telex 311101