



MN2700

MATCHING
NETWORK

INSTRUCTION

MANUAL

TABLE OF CONTENTS

		PAGE
CHAPTER I	INTRODUCTION	1-1
1-1.	Description	1-1
1-2.	Specifications	1-2
CHAPTER II	INSTALLATION	2-1
2-1.	Unpacking	2-1
2-2.	Location	2-1
2-3.	Requirements	2-1
2-4.	Antenna Connections	2-1
CHAPTER III	OPERATION	3-1
3-1.	Front Panel Controls	3-1
3-2.	Rear Panel Connections	3-1
3-3.	Use of the Drake B-1000 Accessory Balun	3-1
3-4.	Operating Procedure	3-2
3-5.	Off-the-Air Tuning	3-3
3-6.	Reflected Power	3-3
3-7.	Use with Transceivers or T/R Combinations	3-3
CHAPTER IV	MAINTENANCE	4-1



Fig. 1-1 MN2700 Matching Network

CHAPTER I

INTRODUCTION

1-1. DESCRIPTION.

The typical modern transmitter or high-power amplifier has either a pi-network tank circuit or a broadband transformer output and will work into resistive loads of 50 to 75 ohms with Voltage Standing Wave Ratios (VSWR) of 2:1 or less. This resistive load can only be achieved with a resonant antenna; thus, for multiband operation, multiple antennas are required. Space and cost considerations render this solution impractical for most amateurs. In addition, many single-band antennas will not maintain less than 2:1 VSWR across the entire band. The MN-2700 impedance-matching network can:

1. Measure feedline VSWR, then reduce the VSWR at the transmitter output to 1:1.
2. Monitor transmitter power output in watts directly and continuously.
3. Attenuate 2nd harmonic output from a transmitter by 25 to 35 dB; thus it may eliminate the need for a low-pass TVI filter.
4. Match an antenna to a transmitter having fixed loading.
5. Give optimum match with multiband antennas.
6. Precisely match a transmitter to an antenna across a complete amateur band.
7. Permit off the air transmitter tuning using a dummy load.
8. Eliminate the necessity of retuning the transmitter when switching from "barefoot" to linear amplifier operation since the transmitter always "sees" 50 ohms resistive.
9. Help localize trouble by comparing transmitter output into an antenna and into a dummy load.
10. Allow antenna comparisons with the use of the internal antenna switch.
11. Permit the use of open-wire feedline antenna systems, with the use of an accessory balun.
12. Permit the use of long-wires of various impedances. The accessory balun can be used to match the higher impedance ranges.

1-2. SPECIFICATIONS.

Frequency Coverage: 1.8 to 30 MHz. Band Switch marked for 160, 80, 40, 20, 15, and 10 meter amateur bands; however, frequency coverage between amateur bands is possible by using the nearest band positions with a small reduction in matching capability.

Input Impedance: 50 ohms (resistive).

Load Impedance: 50 ohm coaxial with VSWR of 5:1 or less at any phase angle (3:1 on 10 meters). 75 ohm coaxial at a lower VSWR can be used.

Balanced Feedlines: With the Drake B-1000 accessory balun, tunes feed point impedances of 40 to 1000 ohms, or 5:1 VSWR referenced to 200 ohms (3:1 on 10 meters).

Long-Wire Antennas: Feed point impedances up to 5:1 VSWR referenced to 50 ohms. Also, 5:1 referenced to 200 ohms with the Drake B-1000 accessory balun (3:1 on 10 meters).

Power Capability: 1000 watts average continuous duty, 2000 watts PEP

Meter: Reads VSWR or forward power, 0-200 watts or 0-2000 watts.

Wattmeter Accuracy: $\pm 5\%$ of reading $\pm 1\%$ of full scale.

Insertion Loss: 0.5 dB or less on each band after tuning.

Dimensions: Height: 4-17/32 in. (11.5 cm)
Width: 13-3/32 in. (33.26 cm)
Depth: 13 in. (33 cm) including connectors.
Weight: 11 lbs. (5 kg)

Front Panel Controls: Provide for the adjustment of resistive and reactive tuning, antenna switching, band switching, VSWR calibration, and selection of watts or VSWR functions of the meter.

Rear Panel Connectors: The rear panel has four type SO-239 connectors (one for input and 3 for outputs), three screw terminal connections (for long-wire and open-wire feeder systems), and a ground post.

CHAPTER II INSTALLATION

2-1. UNPACKING.

Carefully remove the MN-2700 from the shipping carton and examine it for evidence of damage. If any damage is discovered, immediately notify the transportation company that delivered the unit. Be sure to keep the shipping carton and packing material for the transportation company to examine if there is a damage claim. Keeping these items is recommended in any case, since having them available makes shipment of the unit much easier should it ever be necessary to return it to the factory for service.

NOTE

Fill out the enclosed registration card and return it to the factory within 10 days of purchase to insure registration and validation of the warranty.

2-2. LOCATION.

The MN-2700 will work properly in almost any location. Select a location on the operating table that will allow you to reach the control knobs easily. Figure 2-1 illustrates recommended viewing options using the hardware furnished with the unit.

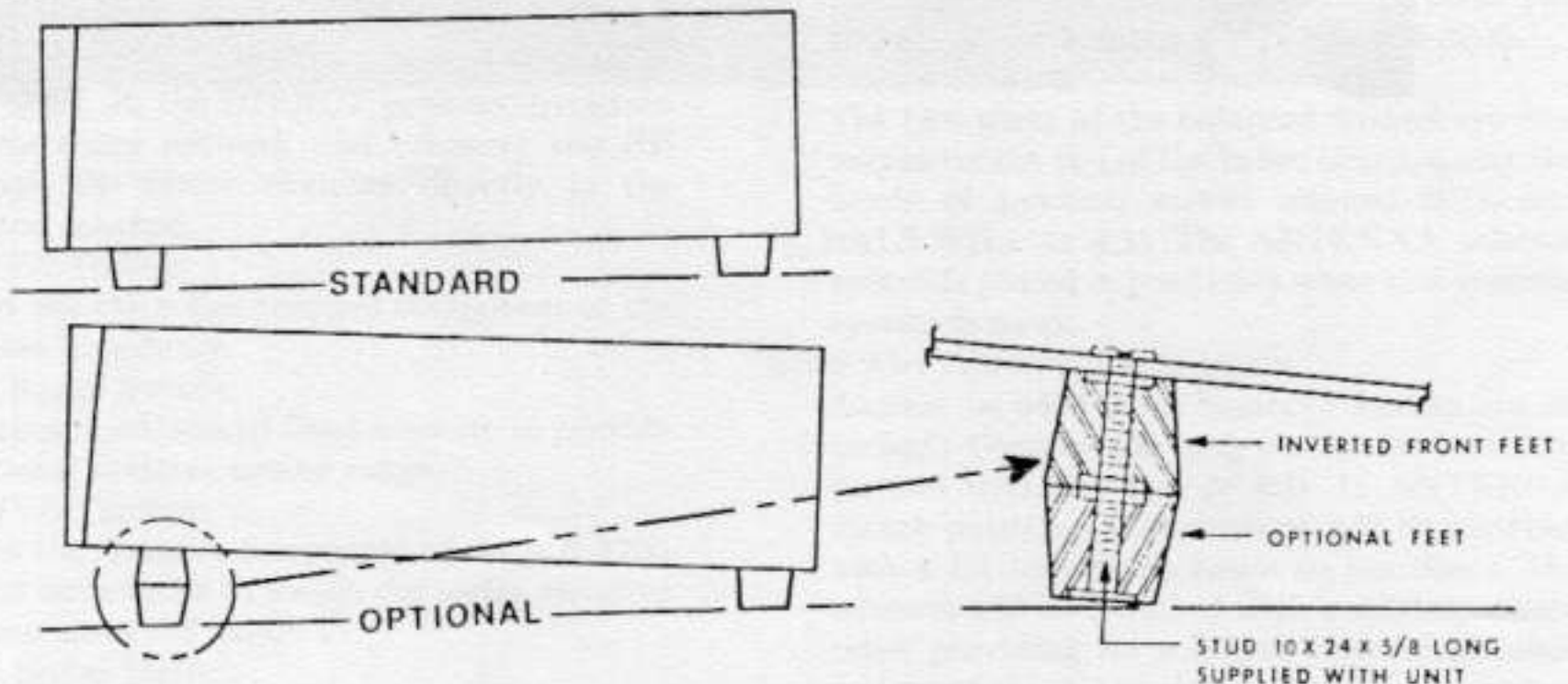


Fig. 2-1 Viewing Angle Options

2-3. REQUIREMENTS.

Connect the RF output of your transmitter or amplifier to the XMTR connector of the MN-2700, using 50 ohm coaxial cable such as RG-8/U. Cable length is not critical. In installations using a transceiver or transmitter-receiver combinations, the matching network should be the last item the out-going RF signal passes through before entering the feedline to the antenna. The effects of this on receiver operation will be discussed in Chapter III, Operation, of this manual.

Connect the EXT GND post of the matching network to the station ground with a short piece of heavy braid.

2-4. ANTENNA CONNECTIONS.

Antennas such as beam antennas, single band dipoles, trap dipoles, and verticals fed with coaxial cable should be connected to the rear panel connectors marked ANT 1 or ANT 2.

Connect end-fed long-wire antennas to the rear panel screw terminals labeled LW3 or LW4. A good RF ground should be connected to the EXT GND post. Antennas fed with balanced feedline should be connected as explained in Chapter III, Section 3-3 of this manual.

CHAPTER 3
INSTALLATION

REQUIREMENTS

1. The antenna system must be properly installed and adjusted. The antenna system should be installed in accordance with the instructions in Chapter 2 of this manual. The antenna system should be adjusted for maximum SWR.

2. The antenna system should be installed in a location that is free of obstructions and is not near any power lines or other electrical equipment.

3. The antenna system should be installed in a location that is protected from weather and other environmental conditions.

4. The antenna system should be installed in a location that is not near any metal objects or structures that could interfere with the signal.

5. The antenna system should be installed in a location that is not near any high-voltage power lines or other electrical equipment.

6. The antenna system should be installed in a location that is not near any radio frequency interference (RFI) sources.

7. The antenna system should be installed in a location that is not near any other electronic equipment that could interfere with the signal.

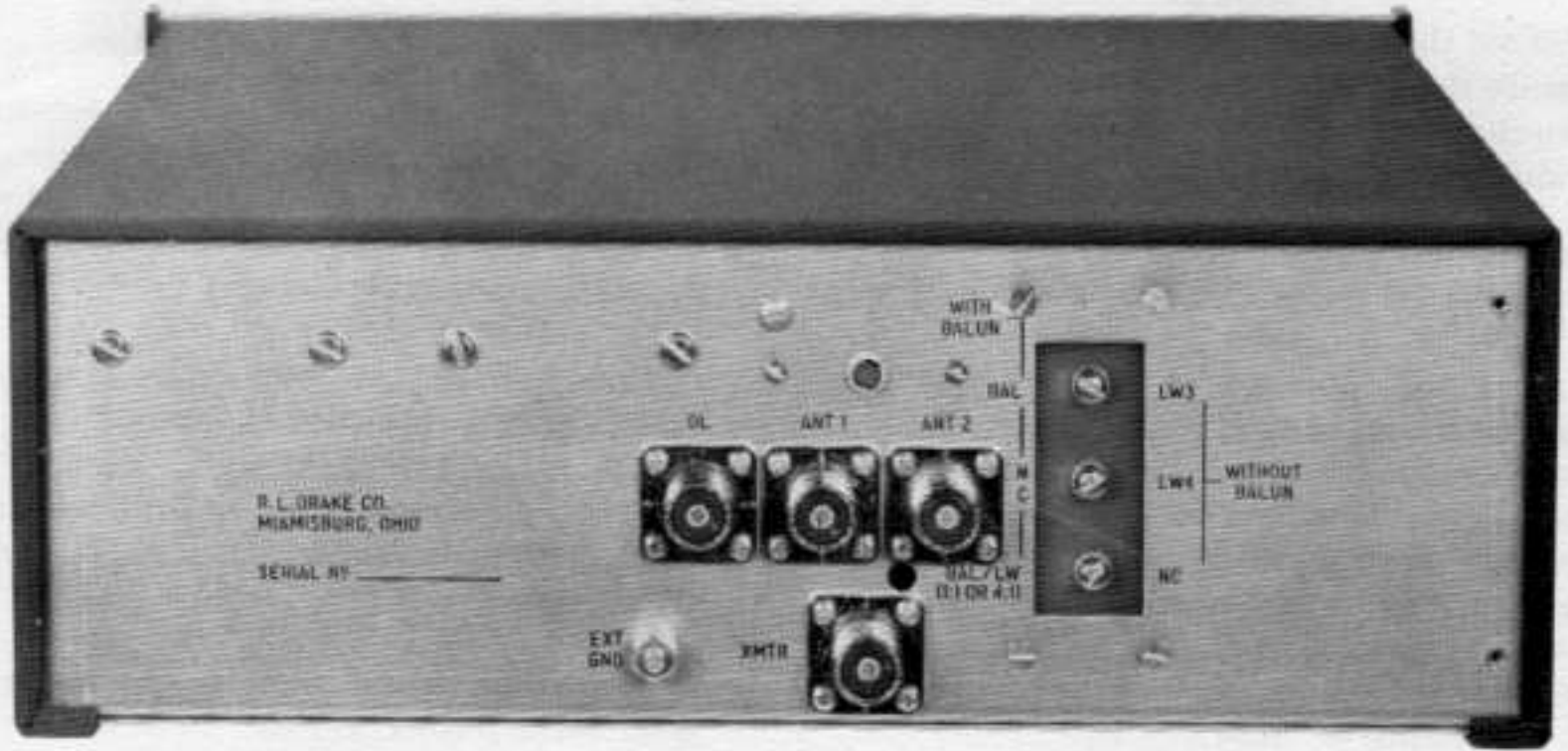


Fig. 3-2 Rear Panel Connections

CHAPTER III

OPERATION

3-1. FRONT PANEL CONTROLS. (Figure 1-1)

VSWR SET Control:

Varies the sensitivity of the VSWR sensing circuitry.

Meter:

Displays either forward power in watts or VSWR as selected by meter switches.

VSWR SET Switch:

Used to calibrate the meter for VSWR measurements.

VSWR READ Switch:

Causes meter to indicate VSWR.

200 and 2000 Watt Switches:

Causes meter to indicate forward power, either 200 or 2000 watts full scale.

ANTENNA Switch:

Selects the desired antenna and grounds all unused antenna terminals. Positions are provided for Dummy Load (which can also be used for an additional antenna or as a grounding position for antennas 1 through 4), 2 coaxial-fed antennas (1,2) and two long-wire antennas (3,4 without accessory balun). With accessory B-1000 balun, balanced feedline capability or 1:1 and 4:1 match to long-wire antennas are available.

BAND Switch:

Selects the fixed capacitors and inductors for each band. In the DIRECT position, bypasses the matching network and connects the RF through the meter circuitry directly to the antenna selected.

REACTIVE Tuning:

Tunes out the series reactive component of the antenna impedance.

Reactive Range Switch:

Switches in additional fixed capacity to provide additional reactive tuning range.

RESISTIVE Tuning:

Varies the resistive component of the MN-2700 output impedance to match the series resistive component of the load.

Resistive Range Switch:

Switches in additional fixed capacity to provide additional resistive tuning range.

3-2. REAR PANEL CONNECTIONS. (Figure 3-2)

XMTR Jack:

SO-239 socket for input from the transmitter.

DL Jack:

SO-239 socket for the connection of a dummy load (or another coaxial fed antenna).

ANT 1 and ANT 2:

SO-239 sockets for 2 separate coaxial fed antennas.

LW3 and LW4:

Screw terminals for two long-wire antennas, when used without the accessory balun (1:1 impedance ratio to matching range of network). Numbers correspond to ANTENNA selector switch position.

3-3. USE OF THE DRAKE B-1000 ACCESSORY BALUN

Installation:

Remove the three screws at terminals marked LW3, LW4, NC and then re-install these screws through the holes in the balun board to the matching terminals on the MN-2700. Also, install the two mounting screws in the other two corners of the balun board to the MN-2700.

Balanced Feedlines:

The two wires of the balanced feeders are connected on the top of the balun board, under the heads of terminal screws marked BAL and BAL/LW(1:1 or 4:1). The ANTENNA selector switch is placed in position 3 when this antenna system is used.

Long-Wire Antenna Using Balun:

(Cannot be used when balanced feeders are attached.) Connect the long-wire to the terminal marked BAL/LW (1:1 or 4:1). In ANTENNA switch position 3, the antenna will be matched with a 1:1 impedance ratio. In position 4, the antenna will be matched with a 4:1 impedance ratio, providing for a higher impedance range matching capability. It is absolutely necessary to have a good RF ground.

Multiband Antenna:

A doublet antenna, 135 feet long, center fed with open-wire feeders 67 feet long, can be matched using the accessory balun on 80 through 10 meters. This antenna can also be used as a 160 meter vertical with a 'top-hat' by tying the feeders together and connecting the feeders to the terminal marked *BAL/LW* (1:1 or 4:1). In position 3 this provides a 1:1 impedance ratio. This antenna also has been used successfully (depending on height, ground, etc.) as a 160 meter inverted 'L' (fed through a 4:1 impedance transformation) with the other half operating as a counterpoise.

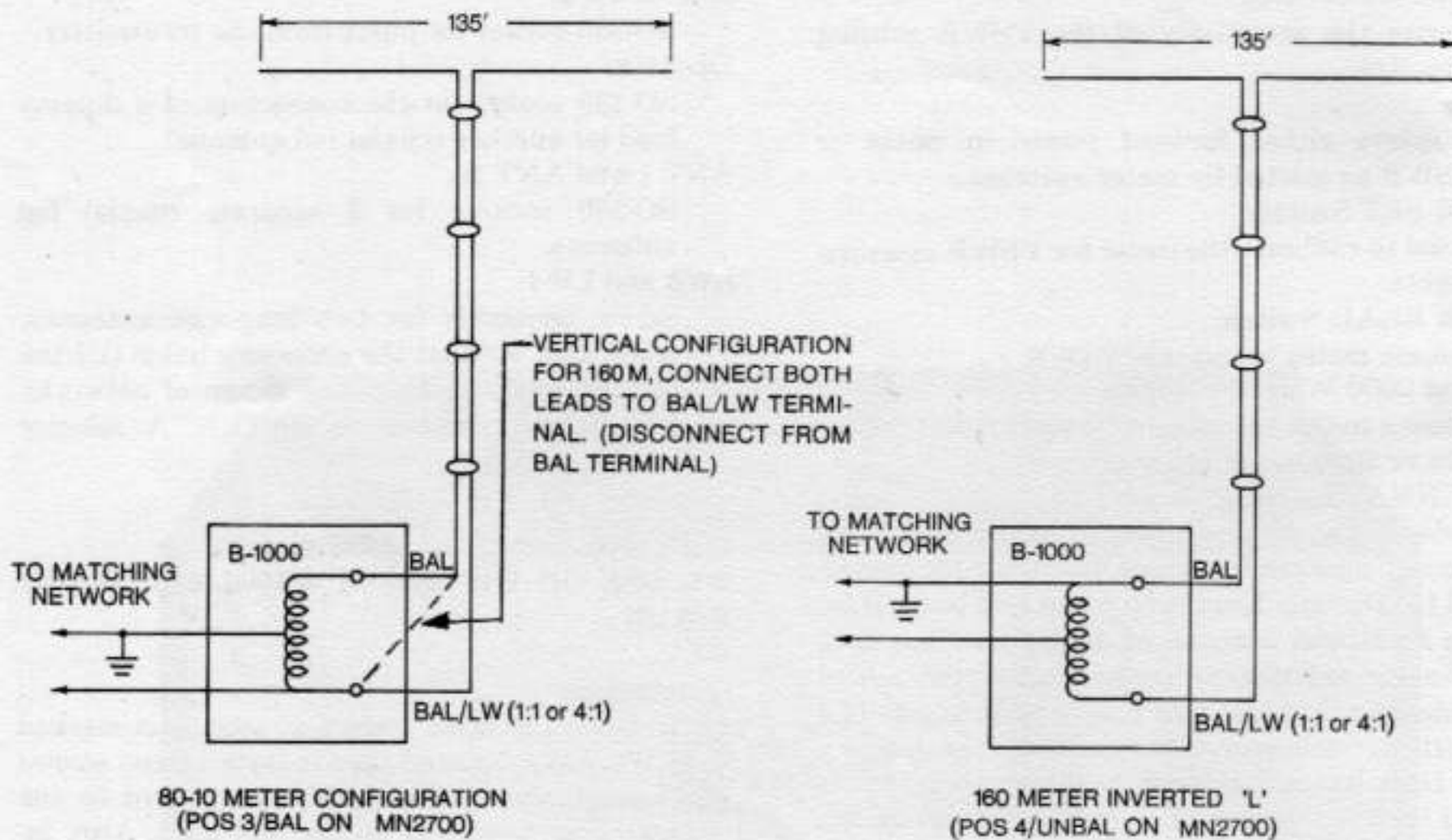


Fig. 3-3 Multiband Antenna Configurations

3-4. OPERATING PROCEDURE.

CAUTION

An antenna or a dummy load **MUST** be connected to the MN-2700 before energizing the transmitter to avoid damage to the matching network and the transmitter. Initial tuning must be done with low transmitter power. Final small adjustments may be made at full power. Do not change any switch positions under high power.

Preset the operating controls as follows:

- BAND Switch: To desired band
- Resistive Tuning: To 5
- Reactive Tuning: To 5
- Resistive Range: To 0 - 10
- Reactive Range: To 0 - 10
- VSWR Set Control: Fully Counterclockwise
- Meter Switches: To VSWR READ

Energize the transmitter, apply low power to the matching network, adjust the transmitter plate tuning to resonance, and adjust loading to minimum (max. capacity). The VSWR meter should read upscale. Vary the RESISTIVE tuning until the VSWR dips. If there is not enough tuning range to dip the VSWR, switch in or out the resistive range capacitor as needed to dip the VSWR. Then turn the

REACTIVE tuning control clockwise. Readjust the RESISTIVE tuning for a dip. If this dip is downscale from the first dip, you are tuning in the right direction, and should continue to alternately move the REACTIVE tuning control clockwise and tune the RESISTIVE tuning for a dip, until a minimum VSWR indication is obtained. If the second dip found reads higher on the meter than the first dip, the REACTIVE tuning control must be turned counterclockwise a short distance, and the RESISTIVE tuning adjusted for a dip. Continue alternating these actions until a minimum VSWR reading is reached. Again, if additional tuning range is needed, switch in or out the range capacitors to obtain minimum VSWR reading.

If the dips found during the tuning procedure are so far downscale that it becomes difficult to tell whether a particular dip is lower or higher than the preceding one, you can increase the meter sensitivity and get readings that are farther upscale by turning the VSWR SET knob clockwise. With this added sensitivity it may not be possible to dip to the meter zero, but any residual reading will represent a very small power level, probably less than 0.1 watt.

When the matching network has been adjusted to the lowest possible dip, it is properly tuned to present a 50 ohm resistive load to the transmitter. Adjust the transmitter plate tuning and loading controls as directed by the transmitter instruction manual.

Make a note of the settings of the RESISTIVE and REACTIVE tuning and range controls, and the BAND switch. The next time you operate on this band, you can tune up quickly by returning the MN-2700 controls to the same settings.

With the range switch in 0-10 position, the tuning control would be recorded as the number on the knob dial between 0 and 10. With the range switch in the 10-20 position, 10 should be added to the number on the dial - record a number between 10 and 20. In the 20-30 switch position, add 20 and record a number between 20 and 30.

Push the VSWR SET button and rotate the VSWR SET knob clockwise until the meter needle lines up with the SET mark (full-scale) on the meter face. Push the VSWR READ button. The meter will now indicate VSWR.

3-5. OFF-THE-AIR TUNING.

If a 50 ohm dummy load that is capable of handling full transmitter power output is available, it and the MN-2700 can be used to tune up with minimum interference. Connect the 50 ohm dummy load to DL connector on the MN-2700, switch the ANTENNA switch to GND/DL, switch the BAND switch to DIRECT, and turn on the transmitter. The transmitter (and high-power amplifier, if used) can now be tuned to match the 50 ohm dummy load. Then turn off the amplifier and reduce the transmitter power output, without changing the transmitter tuning. As little as 10 watts input to the MN-2700 is enough. Set the BAND switch to the desired band, the ANTENNA switch to the desired antenna, tune the matching network for minimum VSWR, and then increase the transmitter power to normal operating level.

3-6. REFLECTED POWER.

It is possible to read reflected power with the MN-2700, although the instrument was not primarily designed to do this. To read reflected power, first rotate the VSWR SET knob fully counterclockwise, and press either the 200 WATTS or 2000 WATTS meter switch. Increase transmitter power to the desired level (do not exceed full scale on the meter), then press the VSWR SET button. Rotate the VSWR SET knob clockwise until the meter indicates the same forward power. Press the VSWR READ button. The meter now indicates reflected power.

3-7. USE WITH TRANSCEIVERS OR T/R COMBINATIONS.

Adjustment of the MN-2700 with a transceiver is done exactly as described in Sections 3-4 and 3-5. Since the received signal will be passed through the matching network, it is necessary to change the BAND switch to either DIRECT, or to the band the receiver is tuned to. If this is not done, the received signal will be attenuated by the matching network whenever the BAND switch setting is not the same as the band being tuned.

CHAPTER IV MAINTENANCE

The MN-2700 should be practically maintenance free, since it is a passive device. If either, or both, of the AA-119 diode rectifiers for the wattmeter are damaged, they must be replaced with the same type diodes. Substitution of other type diodes may seriously degrade the accuracy of the wattmeter. If any problems arise that cannot be corrected, either return the unit to your dealer, or write to our Service Department. Please describe your problem in detail, including external connections, control settings, type of antenna, transmitter, etc. Do not return your MN-2700 to the factory without proper

authorization. Send your requests for authorization to the following address:

R.L. DRAKE COMPANY
540 Richard Street
Miamisburg, OH 45342
ATTN: Customer Service Dept.
Telephone: (Area Code 513) 866-3211
Telex No. 288-017

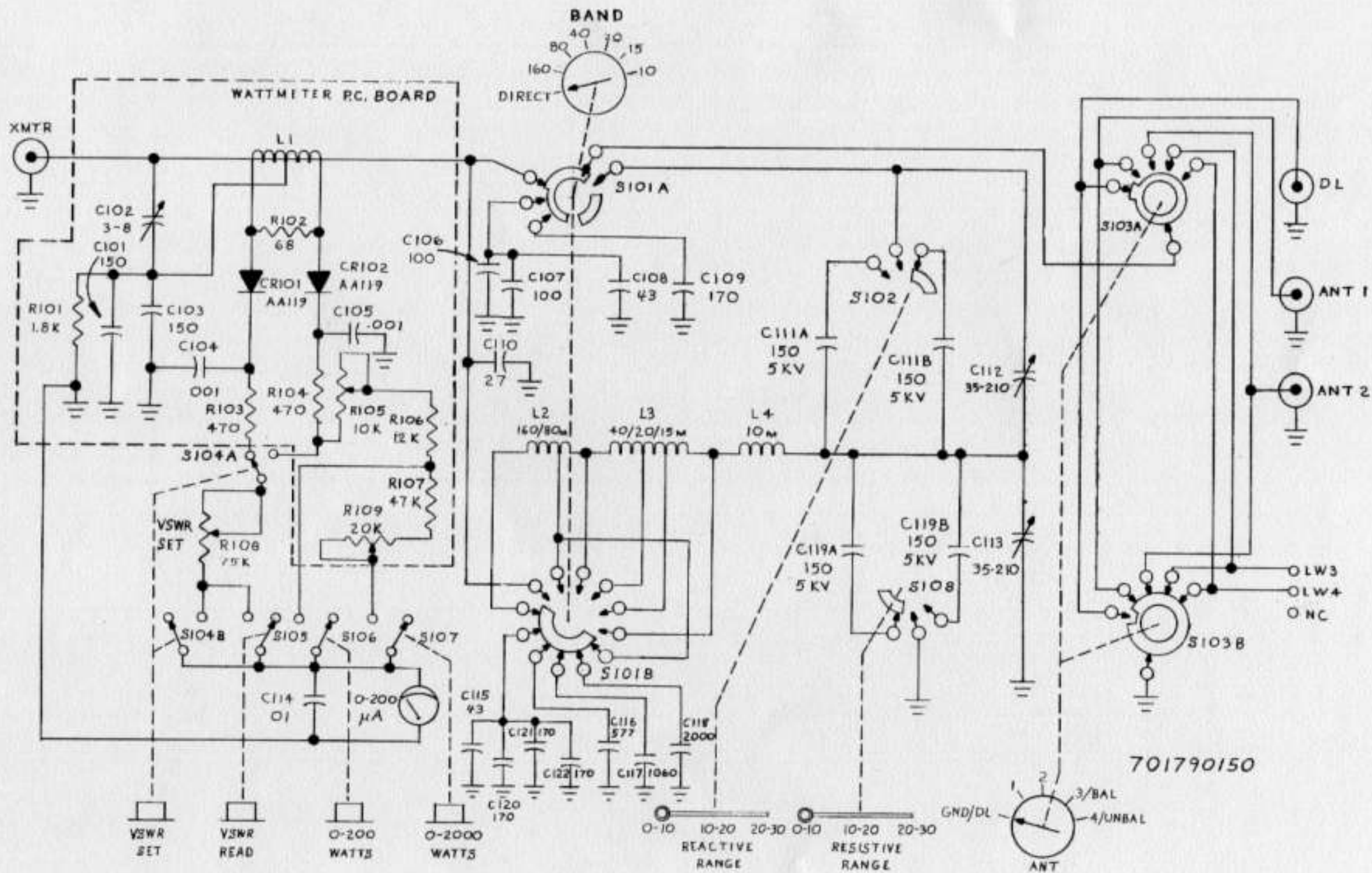


Fig. 4-1 MN2700 Schematic Diagram

