

Assembly Manual

VERSATILE POWER SUPPLY

K-3460

DICK SMITH
ELECTRONICS
PTY LTD
K I T

PLEASE READ DISCLAIMER CAREFULLY AS WE
CAN ONLY GUARANTEE PARTS AND NOT THE
LABOUR CONTENT YOU PROVIDE

Reproduced in part by arrangement with Australian Electronics Monthly
from their July, 1988 edition.

This project, our first based on the Versatile Power Supply circuit, is a 'basic', low-cost variable power supply that may be powered from ac (a suitable transformer) or dc (a battery), and is ideal for the enthusiast's workbench or in the service workshop.

This is a straightforward power supply for the experimenter's bench or service workshop, featuring continuously variable output voltage and variable current limiting. No output metering has been included in order to keep costs down - your multimeter can be used here!

The AEM2520 project is a fully adjustable dc power supply which can take its input from almost any supply - either ac or dc - ranging from 10 Vdc volts to a maximum of 40 - 50 Vdc, or about 8 Vac to a maximum of 35 Vac (see 'Using the 2520'). The output current limit is continuously variable up to the maximum, which is in excess of two amps. The output voltage is likewise continuously variable, down to effectively zero volts.

Being a 'budget' project, a jiffy box with an aluminium lid was used to house it. As it may be powered from either ac or dc, "flying" input leads are used to connect the unit to whatever source - transformer or battery - you might employ.

Construction

This procedure is relatively straightforward.

SPECIFICATIONS as measured on the prototype.

Output Voltage Range:	0.015 V to 37 V with 40 V input. 0.008 V to 17 V with 20 V input.
Current Limit Range:	<30 mA to >300 mA (range 1) <250 mA to >2 A (range 2)
Load Regulation:	<0.01% at 100 mA load. Below 40 mV, zero to 2 A.
Line Regulation, dc:	<0.05% all conditions, overhead >3 V.
Line Regulation, ac:	Ripple signal 1 mV p-p at 500 mA. PSRR approx 0.1%.
Output Noise:	approx 0.6 mVrms, dc - 100 kHz.
Quiescent Current:	2 mA, plus current for LEDs (3.5 mA typically)

Following normal practice, begin with the metalwork. The first step is to mark out and drill the front panel of the jiffy box. You can use the front labels provided with your kit as a template for this. The panel is soft aluminium and is thus easily torn or warped.

Mark all hole centres with a scribe or pen, then either use sheet-metal drills, or drill small (around 3 mm) pilot holes and then expand them to the required diameter with the appropriate drill. A hand-operated tapered reamer, (available

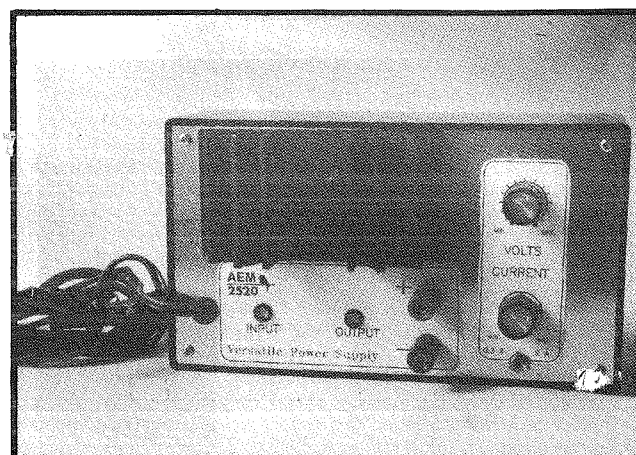
from the larger electronics retailers), does a very good job of enlarging holes in sheet metal, if it is used gently. It is a good idea to clean the sharp burrs from the holes after drilling with a cleaning tool or an oversized drill. This will protect your fingers and the front panel label later.

Next, use the panel itself as a template to mark where the holes should go in the heatsink. The heatsink position is not critical, except that it must not interfere with other things on the panel, including the screw which will hold the panel to the plastic part of the box. Drill the heatsink next.

Now we drill the bracket to mount the printed circuit board to the panel/heatsink. We used a small section of 3mm aluminium extrusion.

Use the blank pc board to mark where the holes need to go on the heatsink bracket to take Q1 and Q2. Likewise, use the panel to mark where the holes in the bracket must go so that, in turn, it can be bolted to the panel and the heatsink. This order of marking will ensure that all the holes finish up compatible.

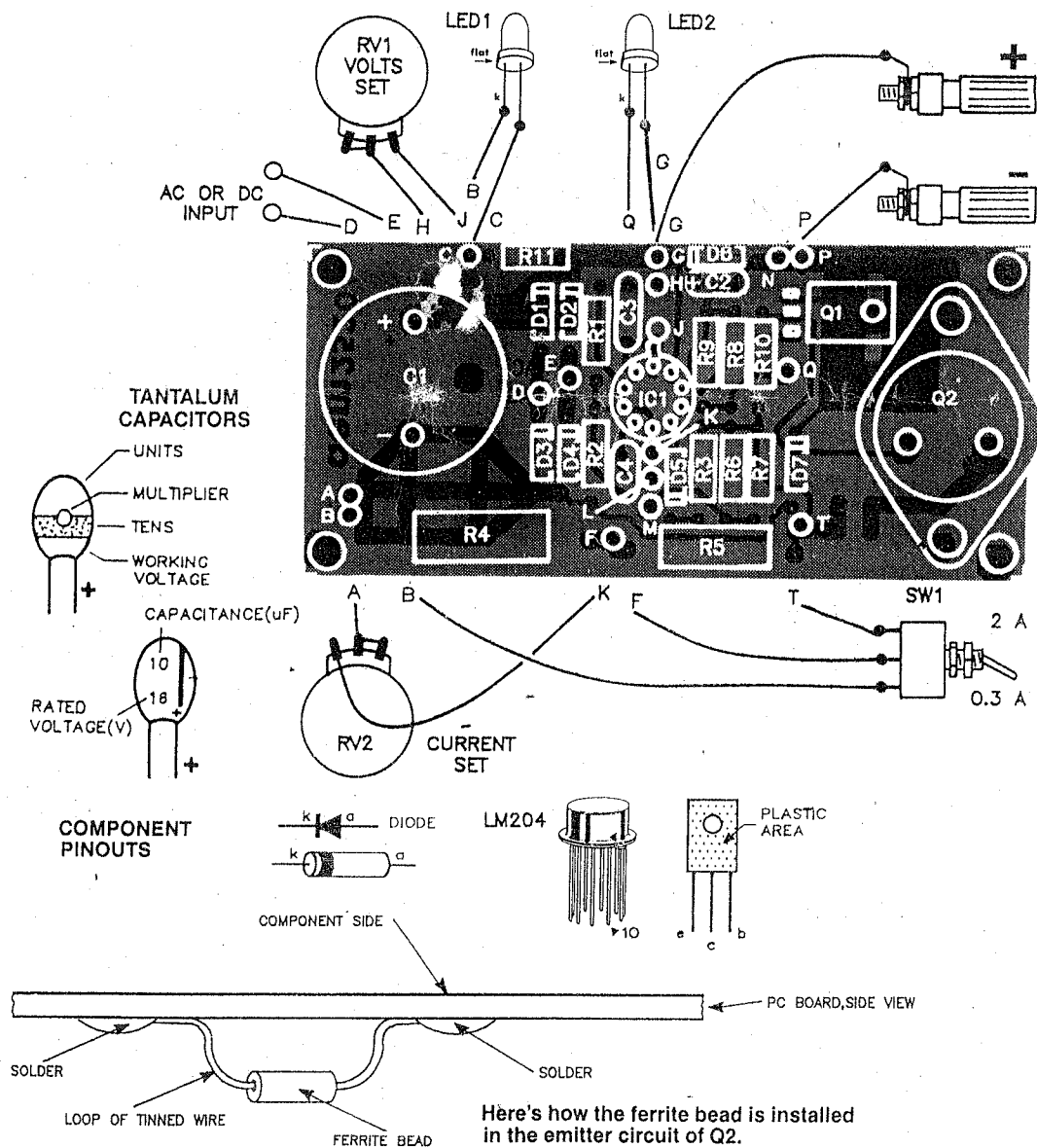
With the panel prepared, you can now place the two Scotchcal labels on the panel.



The project is housed in a commonly available jiffy box. Scotchcal labels are used to dress up the front panel and provide annotation for the controls, etc.

Constructors please note, when building our prototype unit we have discovered the need to include this Errata to rectify a few faults discovered in the instruction manual.

Please follow new overlay for corrections.



PARTS LIST AEM2520

Semiconductors

Q1 BD140, etc
 Q2 2N3055
 IC1 LM204/304 (see text)
 D1-D4 EM401/2/4,
 1N4001/2/4,

or 1N5404 (see text)
 D5-D7 EM401/2/4, 1N4001/2/4

LED1, 2 LEDs

Resistors all 1/4 W, 5% unless noted

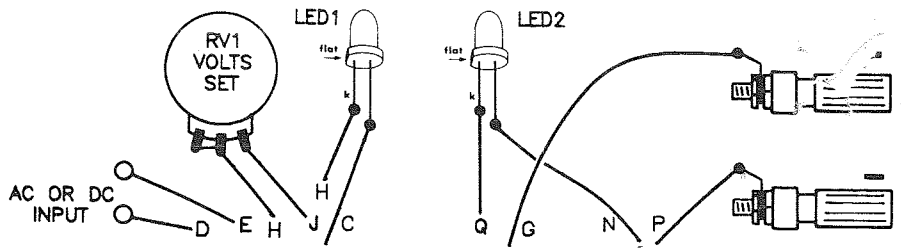
R1 2k7 1/4 W or 1/2 W
 R2 Not used
 R3 22R
 R422R 1 W or 5 W
 R5 2.2R, 1/2 W
 R6, 7, 9 used only with metering
 R8 10k
 R10 68R
 R11 10k
 RV1 20k/A lin. panel mount pot
 RV2 500R/A lin. panel mount pot

Capacitors

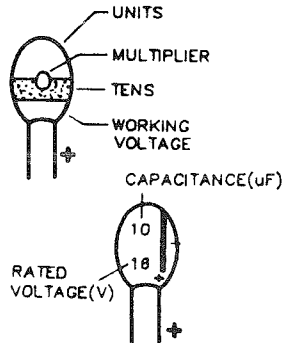
C1 2500u/50 V RB electro.
 C2 1u/35 V tant.
 C3 100n (0.1u) greencap (poly)
 C4 470p ceramic

Miscellaneous

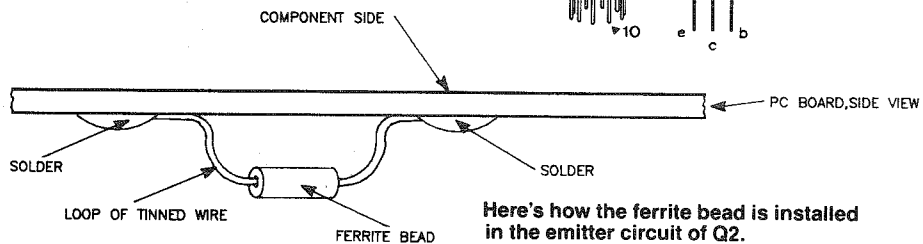
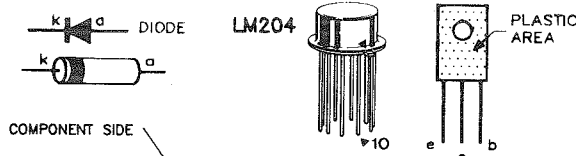
AEM2520 pc board; ferrite bead; jiffy box - 190 x 110 x 60 mm; knobs to suit pots; heatsink - 100 x 37 mm; two screw-type terminals; SPDT toggle switch; two large alligator clips; two LED mounting bezels; one grommet; panel label; aluminium bracket; insulating washers for Q1 and silicone heatsink compound; heavy duty cable; hookup wire; tinned copper wire; nuts and bolts, etc.



TANTALUM CAPACITORS



COMPONENT PINOUTS



Here's how the ferrite bead is installed in the emitter circuit of Q2.

Now mount all the components on the panel except the bracket: The terminals, the LEDs, the pots (with their knobs), the switch and the grommet in the cable entry hole.

Now turn your attention to the pc board. It is perhaps better to fit the heatsink bracket and Q1 and Q2 first. The case of Q2 does not need to be insulated from the bracket, as the case, which is the collector, is at output negative potential. It does, however, need to have adequate thermal conducting paste applied, since Q2 may have to dissipate a lot of energy.

Note that Q1 requires insulation. First check that there are no burrs or metal filings left from the drilling. Then apply a small amount of paste to the bottom of Q2 between the base and emitter pins and gently seat it in its place on the bracket. Put the pc board in position under the bracket and fit the two bolts to hold the three together.

Fit Q1's legs through the pc board holes, apply some paste to its underside, and also some to the heatsink. Sandwiching the insulating washer between the heatsink and Q1, bolt the three to the pc board. Tighten the bolts and solder the transistors in place.

Fit the remaining components to the pc board. A place for C1 is made on the pc board, but if you wish to use a chassis-mounted capacitor, or you cannot get the large "RB" type capacitor, there is no special need for it to be pc board mounted. If an off-card component is used, be sure to run relatively heavy wires, say of at least 1 mm diameter, since the full load current must be drawn through them, and ripple specification depends upon the low resistance of the connection. Make certain the polarised capacitors, diodes and IC are oriented correctly.

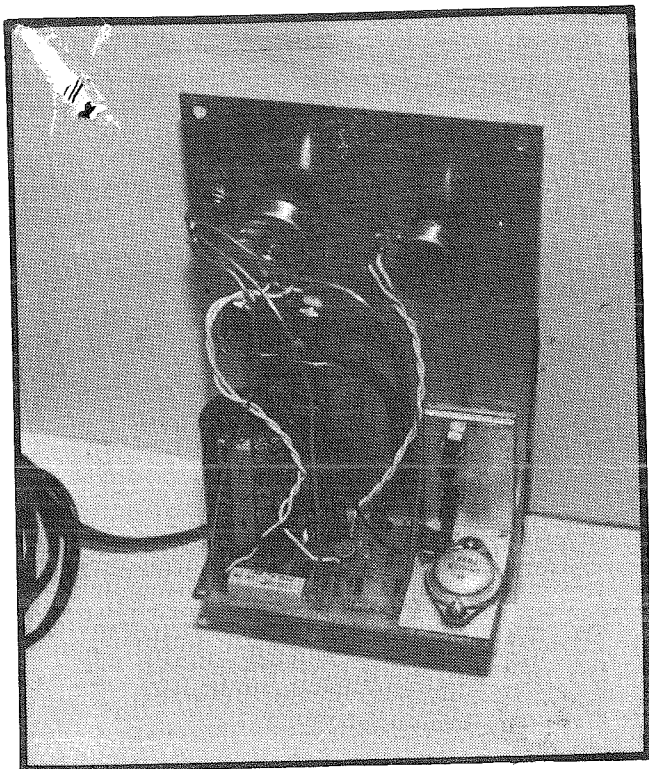
We fitted small posts to the pads to which flying leads are to be run in order to simplify the final wiring-up. It is best to fit the ferrite bead for Q2's emitter lead last. This is because it is brittle and a careless drop could harm it. It is simply threaded on a short piece of tin/cu wire and the wire soldered to the two copper-side pads.

A note concerning IC1. We have specified an LM204, which is an "industrial grade" device, and a couple of dollars more expensive than the plain "commercial" LM304. This specification is to enable the supply to work up to a full 50 volts on the input. The 304 device is only guaranteed to 40 volts. There is no other specification difference of any concern here, so you can use a 304 if you do not need to run over 40 volts on the input.

I should also say something about the input diodes, D1 to D4, at this stage. If you're using a 1A rated transformer as a source, and don't intend using more than 1A output current, use 1N4001/1N4002/1N4004 series diodes which are rated at 1A. Otherwise, use 1N5404 diodes, which are rated at 3A. The Dick Smith Kit is supplied with 1 amp diodes.

Positions have been left on the pc board for resistors associated with panel voltage and current meters. In this project the cost and inherent fragility of panel meters is not really justified. Simply leave the spaces blank. If you wish to fit meters, the method of obtaining the correct resistor values will be explained when the second version (AEM2521) of the supply is described.

When all the components have been fitted and soldered in place, it is time to bolt the pc board and bracket onto the front



This picture shows how the wiring between the pc board and the external components is completed.

panel.

Check the positioning of the pc board behind the panel. You will probably have to bend the LED wires inwards to get clearance for C1. Again, use thermally conductive paste, both between the panel and the bracket and between the panel and the heatsink. When you tighten the bolts, small amounts of the paste should squeeze out of the join, indicating that sufficient has been applied.

Now run all the flying leads. We recommend using heavy duty cable for the input wires; 3 mm diameter automotive cable is quite satisfactory, as is heavy duty "loudspeaker" wire. Solder some suitably heavy duty alligator clips to the cables, and run the end through the grommet. Secure the cable. We simply tied a knot in it, and although purists say that this may harm the cable, it seems most unlikely with automotive cable. Because the supply has a bridge rectifier in it, the polarity of the input is unimportant, and the wires need not be colour-coded.

Run leads to the other items on the panel. Again, heavy duty connections are recommended to the terminals, and to the current range selection switch. We used 1.2mm wire in the prototype, with a little spaghetti insulation where required. This is then easily positioned safely so that it cannot short out onto the panel (which is at output negative potential). Some cable ties can be used to secure all the wiring.

The pots, especially the current limit one, should not be wired rheostat-style (one end open-circuit, using only the wiper and the other end). This is simply because momentary losses of connection which could arise with age in the pots could briefly disable the current limiting circuit. Capacitor C3 has been included to provide smooth adjustment of the voltage even with a "scratchy" pot.

After fitting all the flying leads, the device is ready for testing. Connect some input voltage and see that the power LED comes on. Check that the output LED comes on when the output is turned up. If you connect a short circuit and turn up the current limit control, the supply should eventually become very hot. Check that the heatsink gets hot too. It will actually become too hot to touch after a couple of minutes!

Using the 2520

Using this power supply is like using most others, with just a few interesting points added, which arise because of its versatility. This section is included for those who might like to have a few of the techniques for correct use of any 'lab.' supply explained.

As stated earlier, the AEM2520 can run off next to anything, except straight mains. Because it has no internal transformer of its own, it has to be connected to some source of voltage. Any transformer with less than 35 Vac output is suitable. Note that many transformers deliver slightly more than their "rated" voltage, so it may not be safe to use a "35 volt" transformer.

We recommend a value of about 32 volts. This means that you can use a cheap and commonly available '6672-type' (nominal 30 Vac at 1 A), the sort of transformer that is meant to run doorbells, or the type for pool lights and pumps, equally safely. Because of the low current consumption, dry batteries or sealed rechargeable batteries are also suitable. We recommend the latter if you want a totally safe variable power supply entirely divorced from the mains.

If you have occasion to need a power supply when you are "out in the field," a car battery (or two or three, or even four) can be hooked up and used as the input source.

Because the regulation is very good, you can set the output voltage exactly with a multimeter with no load connected, and expect it to remain pretty constant if you do not alter RV1. We have made the panel with voltage markings around the voltage setting control, so that unless you want very exact control, you can simply work off the scale.

If you wish to set the limit current precisely, just set your meter to current range, and then connect it straight across the output terminals, and adjust the limit control and the range switch to get the level you want. The limit current will not stay precisely where you put it under varying load, but it will be constant to within a few percent.

If you run the supply into a short circuit with the limit set towards the maximum, the heatsink will soon get too hot to touch. If built properly, the supply should not be harmed, but you might be if you get your pinkies near the heatsink!

If you use the supply with fairly long leads (say, over one metre) attached between the output terminals and your 'breadboard' circuit, you are advised to put another small capacitor, such as a tantalum, at the end of the leads. This is because C5 cannot bypass the supply at your breadboard.

STORE LOCATIONS

Australia
NSW
 Swift & Young Sts.
 155 Terrace Level
 Shop 1, 65-75 Main St
 Oxford & Adelaide Sts
 Shop 2, 1B Cross St.
 Warringah Mall
 Campbelltown Mall Queen St
 Shop 235, Archer St Entrance
 147 Hume Hwy
 164 Pacific Hwy
 99 Donnington St
 4 Florence St
 Elizabeth Dr & Bethurst St
 450 High Street
 821-827 The Kingsway
 173 Midland Rd, Tighes Hill
 Lane Cove & Waterloo Rds
 George & Smith Sts
 The Gateway High & Henry Sts
 818 George St
 125 York St
 Treloar's Bldg, Brisbane St
 263 Kerra St

Albury (060) 21 8398
Barkatstown Sq (02) 707 4888
Blacktown (02) 671 7722
Bondi Junction (02) 387 1444
Brookvale (02) 93 0441
Campbelltown (046) 27 2199
Chatswood Chase (02) 411 1965
Chullora (02) 642 8922
Geelong (02) 459 5311
Gore Hill (043) 25 0235
Hornby (02) 477 6833
Liverpool (02) 600 9888
Maitland (049) 33 7866
Miranda (02) 525 2722
Newcastle (049) 61 1896
North Ryde (02) 88 3855
Parramatta (02) 889 2168
Perth (041) 32 3400
Railway Square (02) 211 3777
Sydney City (02) 287 9111
Tamworth (067) 66 1711
Wollongong (042) 28 3800

Queen Elizabeth Dr & Bernard St
 Gold Coast Hwy & Welch St
 Bowen & Ruthven Sts
 Kings Rd & Woolcock St
 Cnr Pacific Hwy & Kingston Rd
 SA
 77 Grenfell St
 688 Port Road
 Main South & Flagstaff Rds
 Shop T25, Elizabeth City
 Centre
 Main North Rd & Darlington St
 WA
 Wharf St & Albany Hwy
 66 Adelaide St
 William St & Robinson Ave
 Raine Square, 125 William St
TAB
 Shop 40A, Lower Level
 Cat & Fiddle Arcade
NT
 20 Stuart Hwy
ACT
 96 Gladstone St

Rockhampton (079) 27 9644
Southport (075) 32 8663
Toowoomba (076) 38 4300
Townsville (077) 72 5722
Underwood (071) 341 0844
Adelaide (08) 232 1200
Beverly (08) 347 1900
Darlington (08) 238 8977
Elizabeth (08) 255 6059
Enfield (08) 260 8088
Cannington (09) 451 8666
Fremantle (09) 335 9733
North Perth (09) 328 6944
Perth City (09) 481 3261
Hobart (002) 31 0800
Stuart Park (089) 81 1977
Fyshwick (062) 80 4944

VIC
 Creswick Rd & Webster St
 145 McCrae St
 Shop 48, Box Hill Central, Main St
 285 Sydney Rd
 Shop 1, 176 Lonsdale St
 Hawthorn Rd & Nepean Hwy
 1150 Mt Alexander Rd
 Shop 1113 Footscray Plaza
 Nepean Hwy & Ross Smith Ave
 Shop 9 110, High St
 291-295 Elizabeth St
 Bridge Rd & The Boulevard
 Shop 2, 141 Maroonah Hwy
 Springvale & Dandenong Rds
Ballerat Bendigo (053) 31 5430
Box Hill (052) 43 0804
Coburg (03) 383 4455
Dandenong (03) 794 9377
Essendon (03) 592 2366
Footscray (03) 379 7444
Frankton (03) 783 9144
Geelong (03) 889 2055
Melbourne City (03) 428 1614
Richmond (03) 879 5338
Ringwood (03) 547 0522
Springvale (03) 879 5338

NEW ZEALAND
 Fort & Commerce Streets
 1785 Great North Road
 Victoria Road & Bealey Avenue
 Manse & Stafford Streets
 450 Anglessea Street
 440 Cuba Street, Alicetown
 Cnr Khyber Pass & Park Rds
 26 East Tamaki Road
 16 Lydney Place
 289 Cameron Road
 154 Featherston Street
Auckland City (09) 389 974
Avondale (09) 88 6696
Christchurch (03) 50 405
Dunedin (024) 74 1096
Hamilton (071) 39 4490
Lower Hutt (04) 66 2022
Newmarket (09) 393 192
Papatoetoe (09) 278 2355
Porirua (04) 376 654
Tauranga (075) 87 071
Wellington (04) 73 9888

HEAD OFFICE AND DSXPRESS ORDER SERVICE
 P.O. Box 321, North Ryde, N.S.W. 2113. Tel: (02) 888 3200 AUSTRALIA.