

Fig. 8.—Receiver schematic—Sets serial Nos. 1 to 9500 incl.

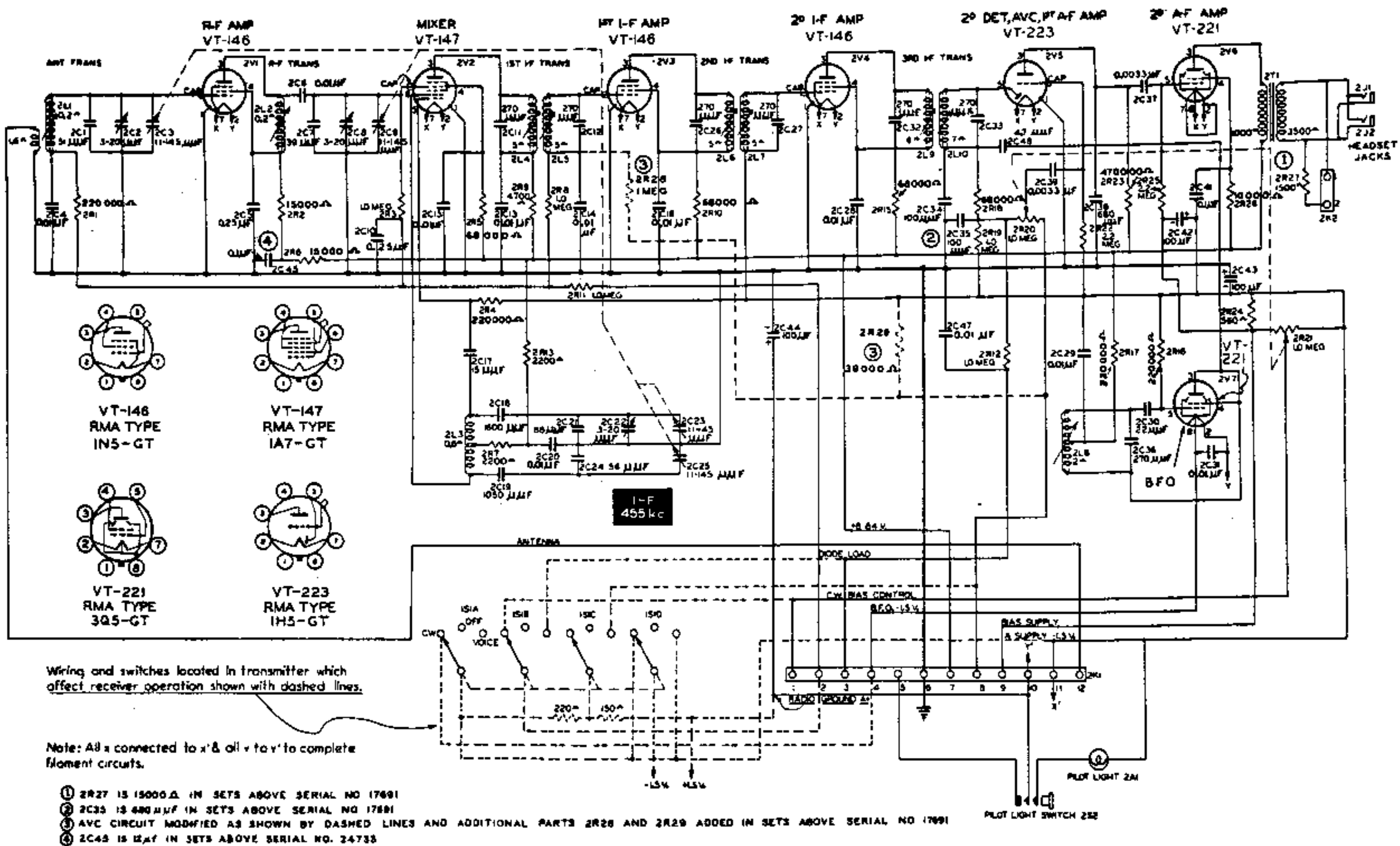
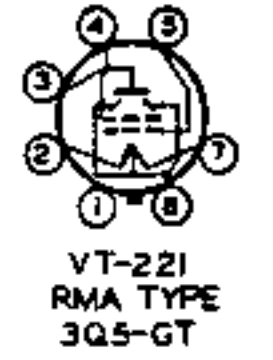
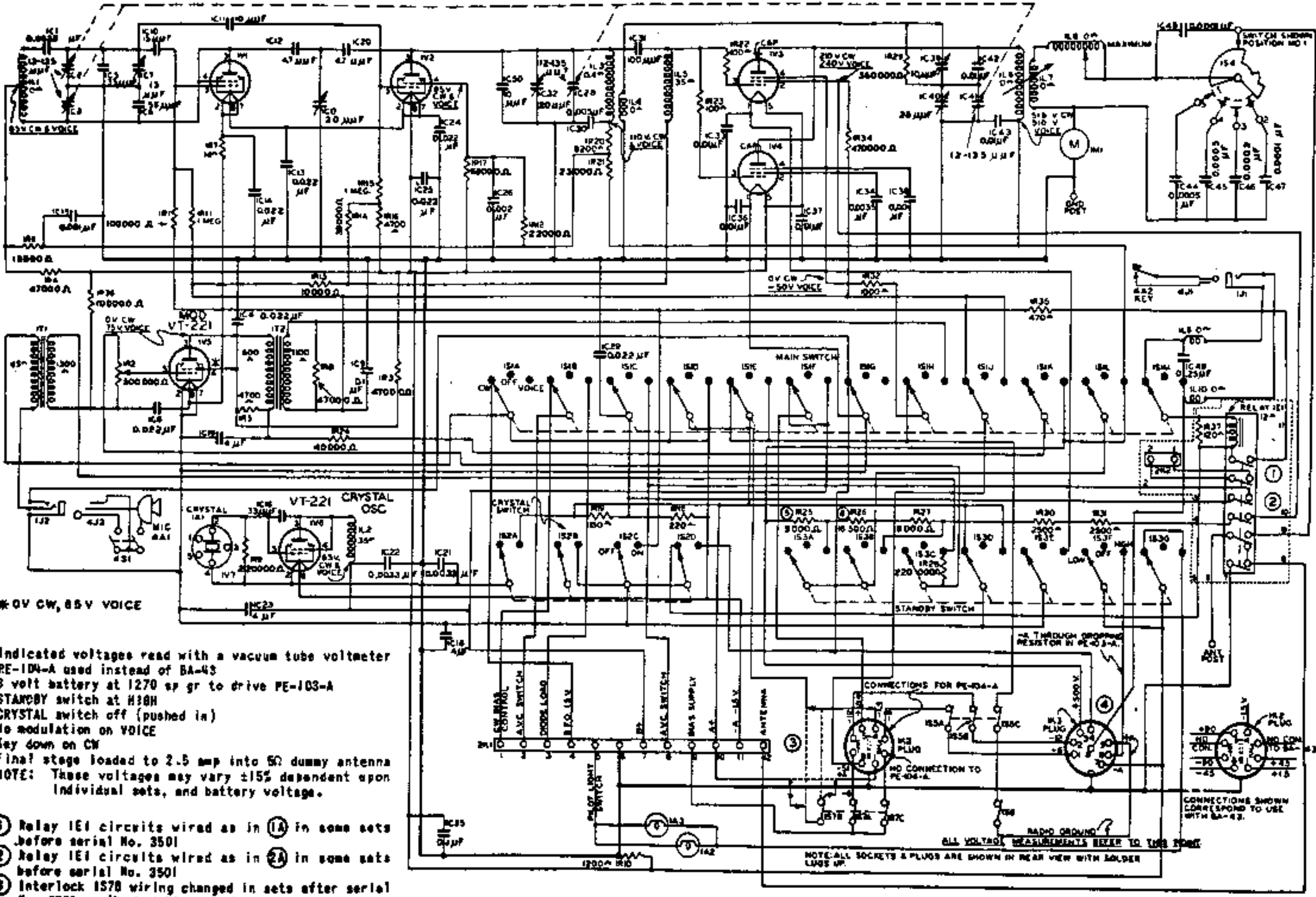


Fig. 9.—Receiver schematic—Sets serial Nos. 9501 and above.

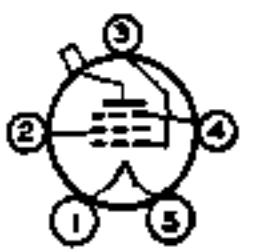
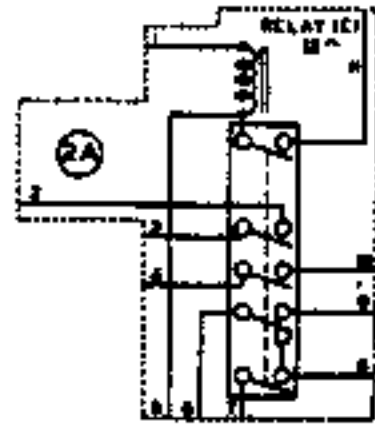
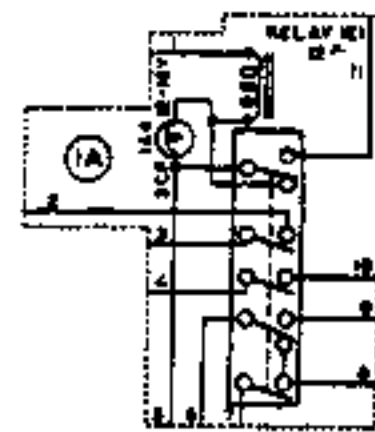
MO
VT-221

INTER PWR AMP
VT-221

PWR AMP
VT-225



VT-221
RMA TYPE
3Q5-GT



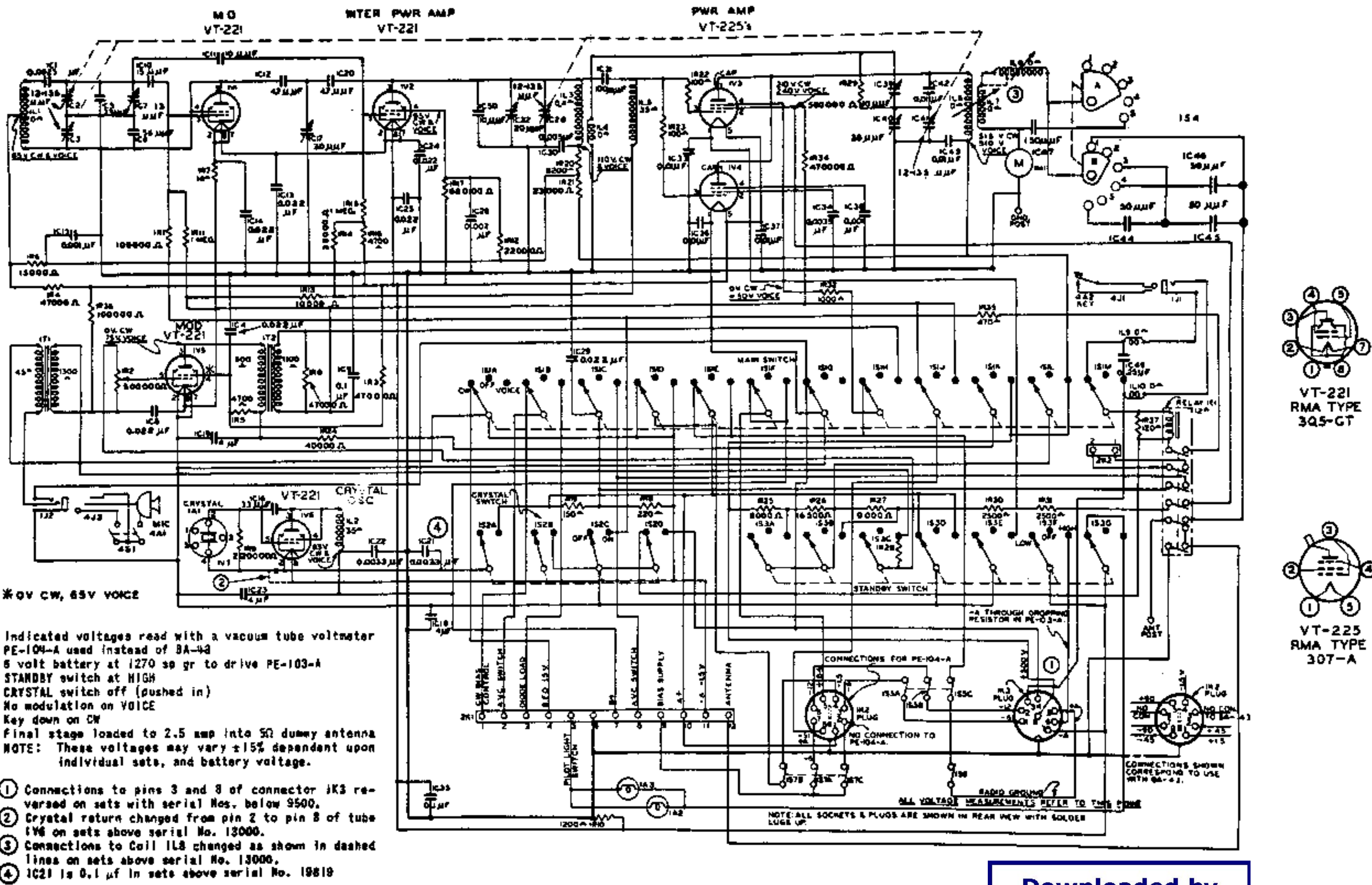
VT-225
RMA TYPE
307-A

Indicated voltages read with a vacuum tube voltmeter PE-104-A used instead of BA-43
 6 volt battery at I270 sp gr to drive PE-103-A
 STANDBY switch at HIGH
 CRYSTAL switch off (pushed in)
 No modulation on VOICE
 Key down on CW
 Final stage loaded to 2.5 amp into 50Ω dummy antenna
 NOTE: These voltages may vary ±15% dependent upon individual sets, and battery voltage.

- ① Relay IE1 circuits wired as in (1A) in some sets before serial No. 3501
- ② Relay IE1 circuits wired as in (2A) in some sets before serial No. 3501
- ③ Interlock IS78 wiring changed in sets after serial No. 3500. (Dashed lines indicate new wiring, --- indicates old wiring.)
- ④ Connections to pins 2 and 3 of connector IK3 reversed on sets after serial No. 9500. (Old circuit shown.)
- ⑤ IR25 is 18000Ω in some sets.
- ⑥ IR26 is 38000Ω in some sets.

Fig. 10.—Transmitter schematic—Sets serial Nos. 1 to 9500 incl.

Downloaded by
RadioAmateur.EU



* 6V CW, 65V VOICE

Indicated voltages read with a vacuum tube voltmeter PE-104-A used instead of BA-43
 6 volt battery at 1270 sp gr to drive PE-103-A
 STANDBY switch at HIGH
 CRYSTAL switch off (pushed in)
 No modulation on VOICE
 Key down on CW
 Final stage loaded to 2.5 amp into 5Ω dummy antenna
 NOTE: These voltages may vary ±15% dependent upon individual sets, and battery voltage.

- ① Connections to pins 3 and 8 of connector JK3 reversed on sets with serial Nos. below 9500.
- ② Crystal return changed from pin 2 to pin 8 of tube 1V6 on sets above serial No. 13000.
- ③ Connections to Coil IL8 changed as shown in dashed lines on sets above serial No. 13000.
- ④ IC21 is 0.1 μf in sets above serial No. 19819

Downloaded by
RadioAmateur.EU

Fig. 11.—Transmitter schematic—Sets serial Nos. 9501 and above.