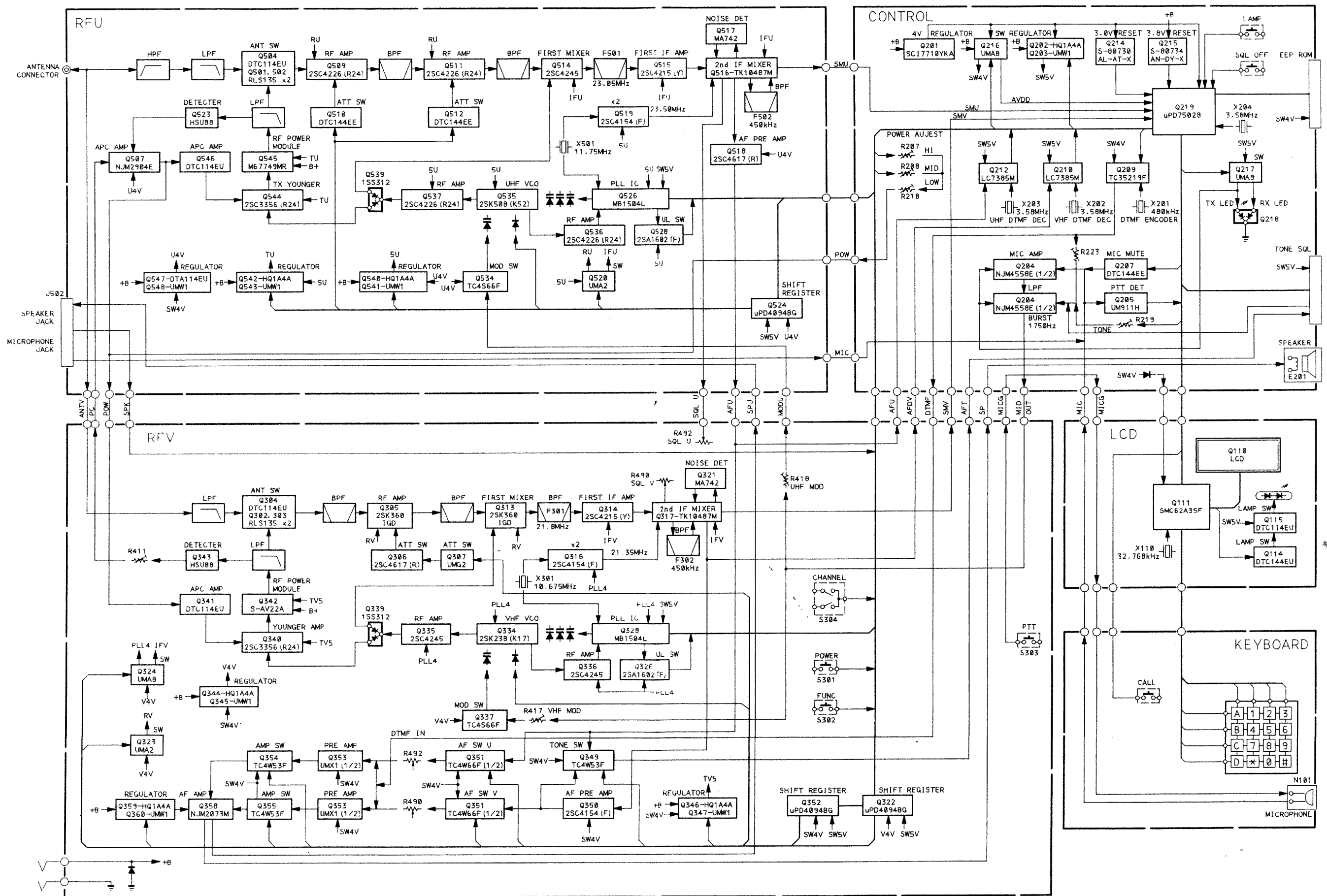
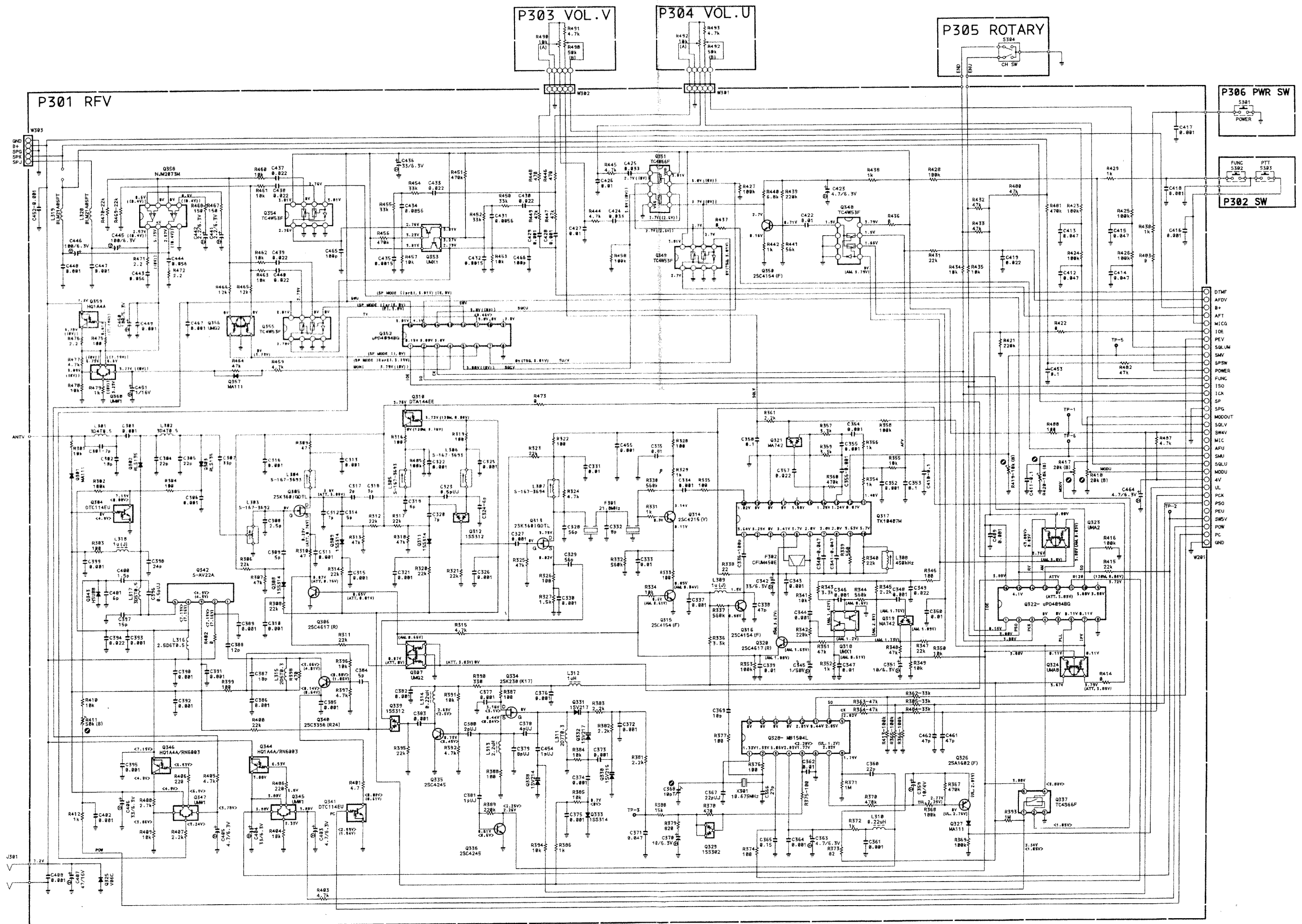


# BLOCK DIAGRAM FOR Model C558

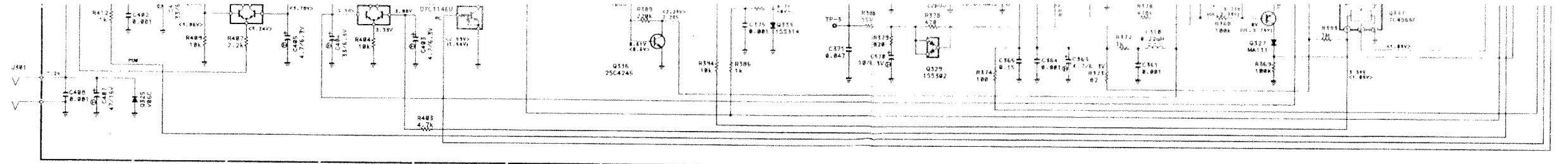
Downloaded by  
RadioAmateur.EU





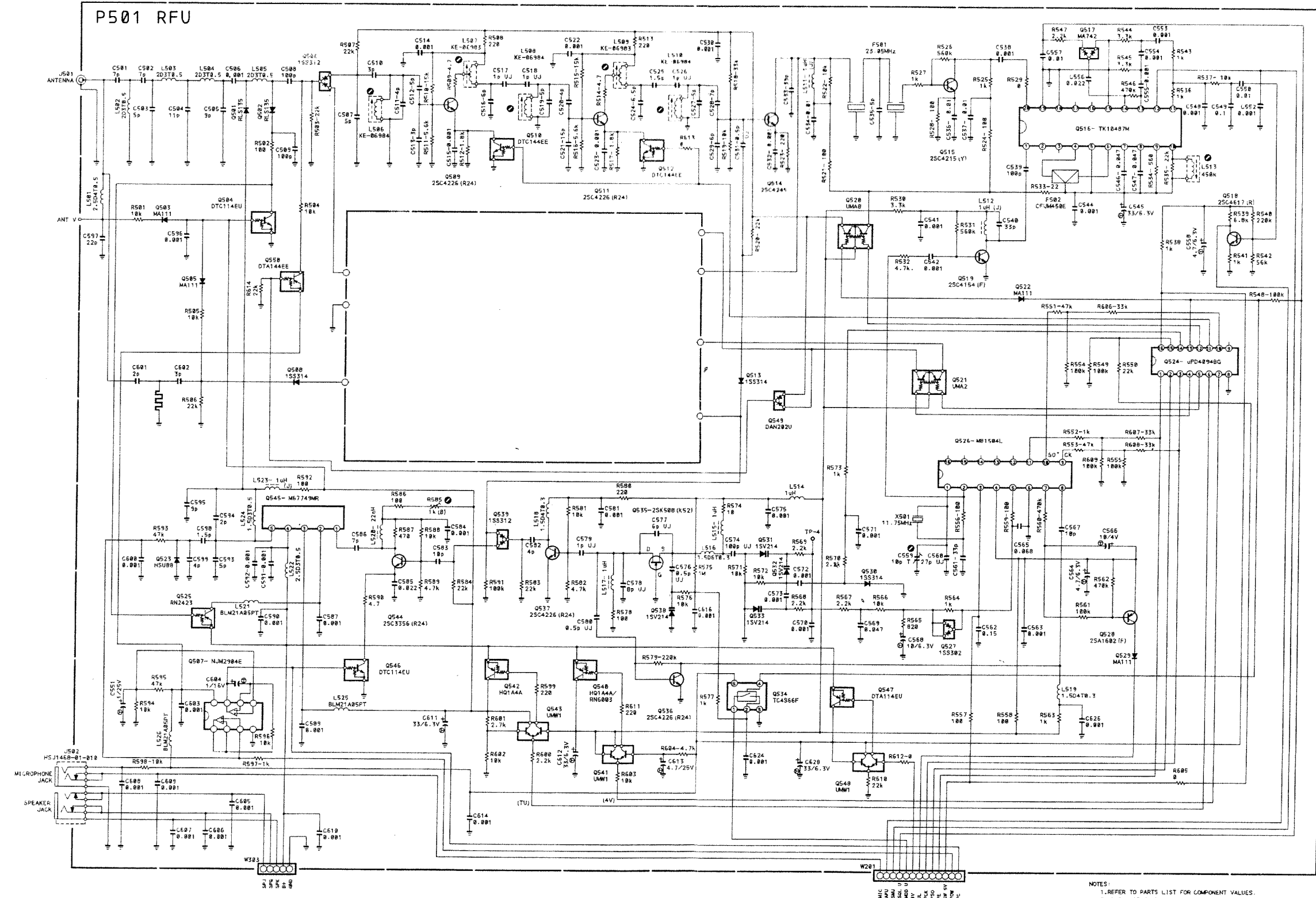
NOTES:  
 1. REFER TO PARTS LIST FOR COMPONENT VALUES.  
 2. UNLESS OTHERWISE NOTED RESISTOR VALUES ARE IN OHMS AND CAPACITOR VALUES ARE IN MICROFARADS.  
 3. VOLTAGE NOTATIONS ARE AS FOLLOWS:  
 NOMARKING RX 7.2V  
 ( ) SOL TIGHT TWIN  
 < > TX HI 1.45.00 435.00





Downloaded by  
RadioAmateur.EU

NOTES:  
 1. REFER TO PARTS LIST FOR COMPONENT VALUES.  
 2. UNLESS OTHERWISE NOTED RESISTOR VALUES ARE IN OHMS, AND CAPACITOR VALUES ARE IN MICROFARADS.  
 3. VOLTAGE NOTATIONS ARE AS FOLLOWS:  
 NOMARKING RX      7.2V  
 ( ) TX HI      TX HI  
 ( ) TX LOW      TX LOW  
 ( )      COMMON



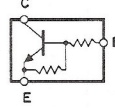
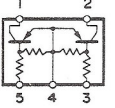
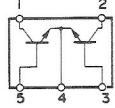
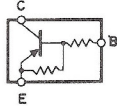
NOTES:  
 1. REFER TO PARTS LIST FOR COMPONENT VALUES.  
 2. UNLESS OTHERWISE NOTED RESISTOR VALUES ARE IN OHMS, AND CAPACITOR VALUES ARE IN MICROFARADS.

Components and wiring are subject to change for modification without notice.

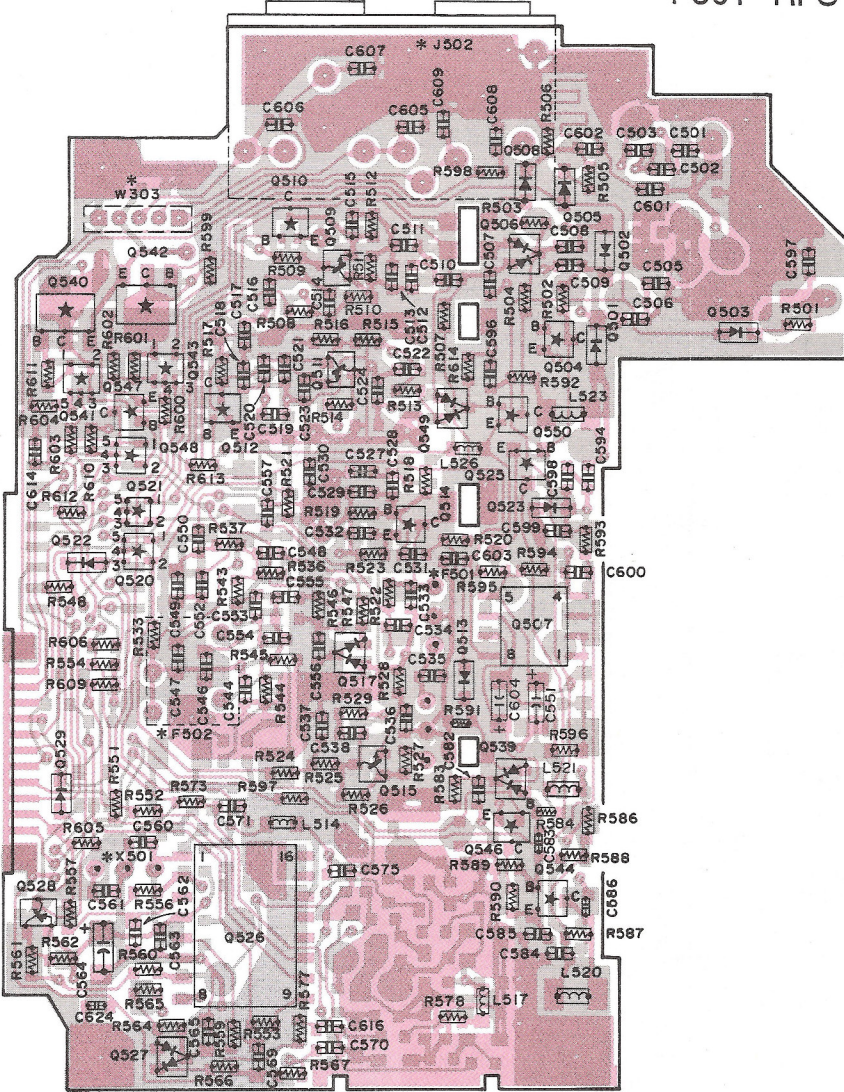




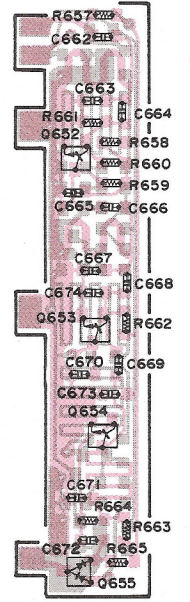
Q547, Q550  
 ★ Q525, Q540, Q542    ★ Q541, Q543, Q548    ★ Q520, Q521    ★ Q504, Q510, Q512, Q546



P501 RFU



P601 SRX

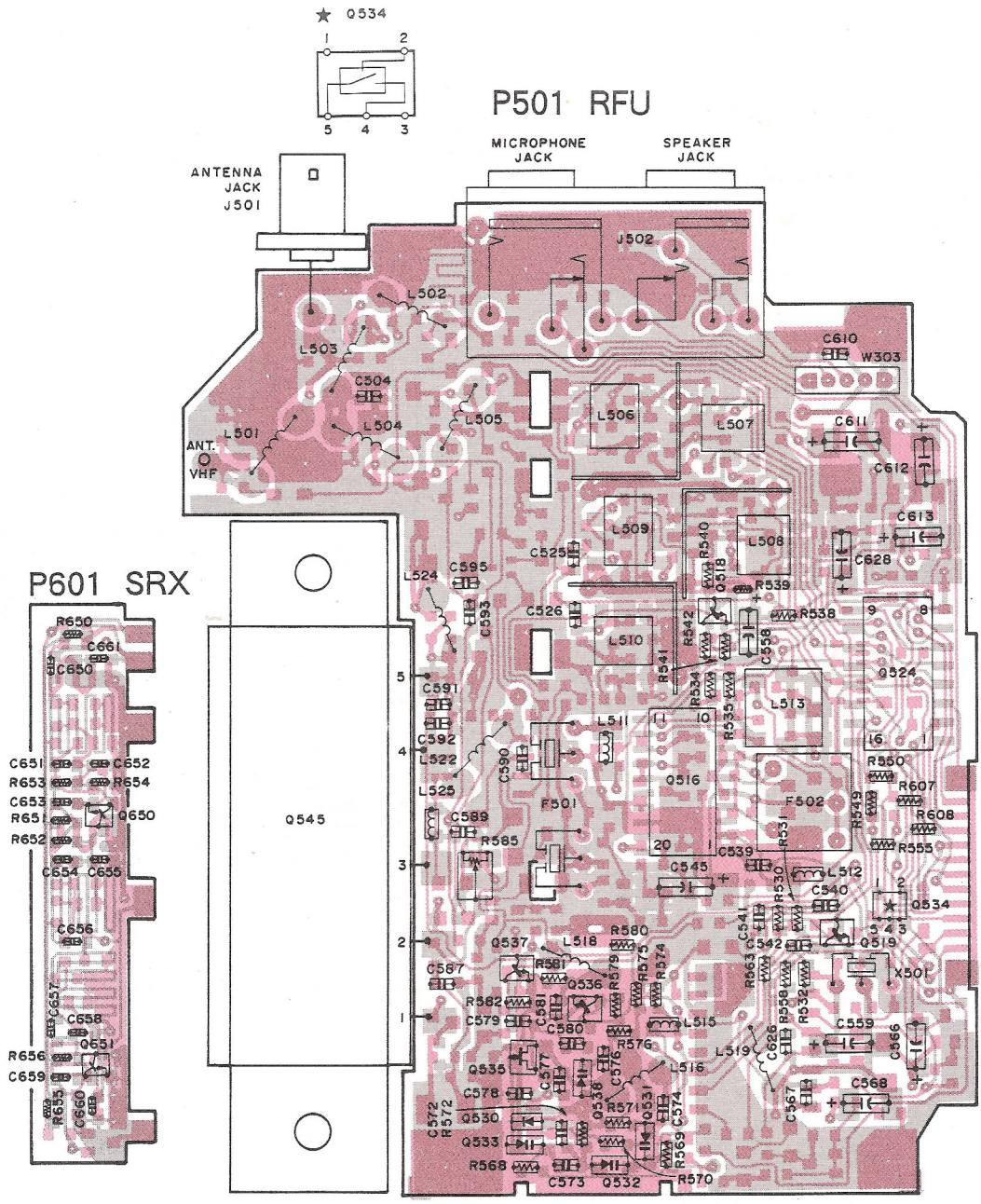


(SHOWN FROM SOLDER SIDE)

P  $\triangle$  2 < 0033 >

\* : MOUNTED ON COMPONENT SIDE



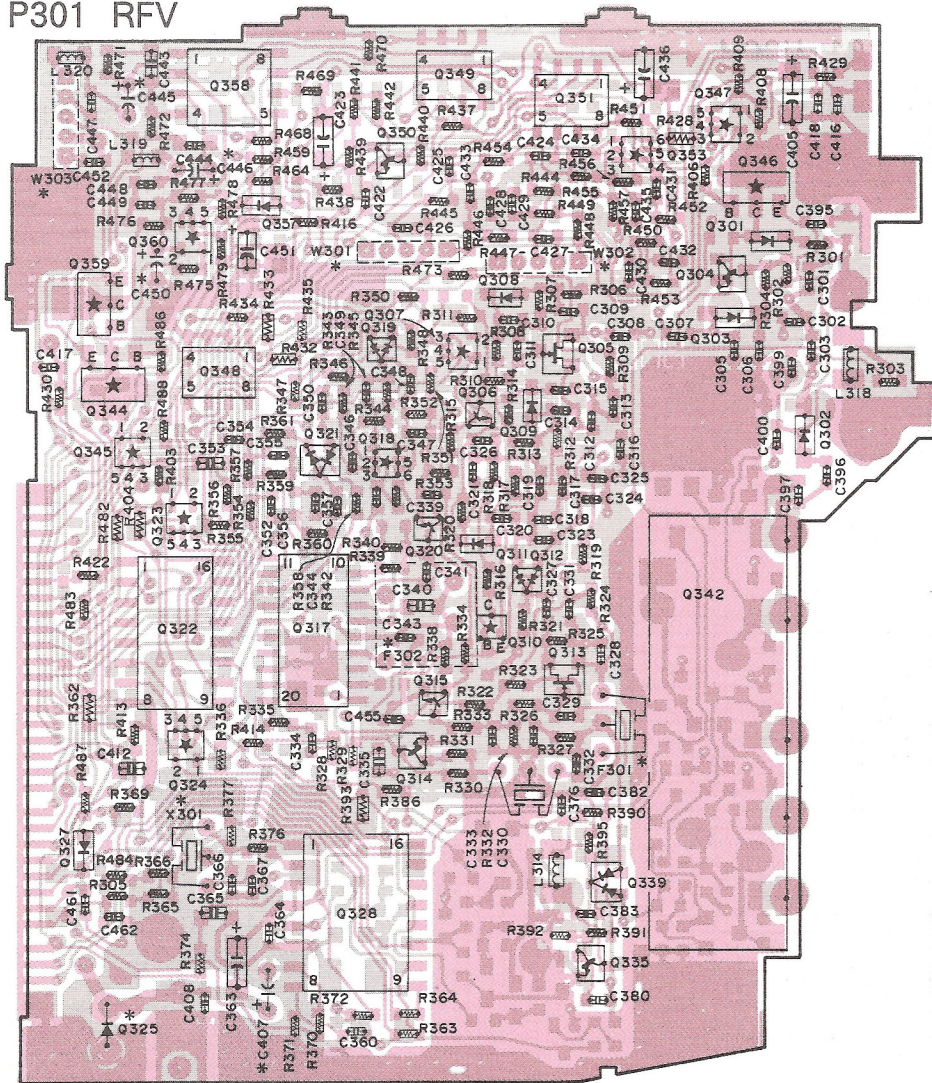


(SHOWN FROM COMPONENT SIDE)

- (COMPONENT SIDE PATTERN)
- (SOLDER SIDE PATTERN)



### P301 RFV

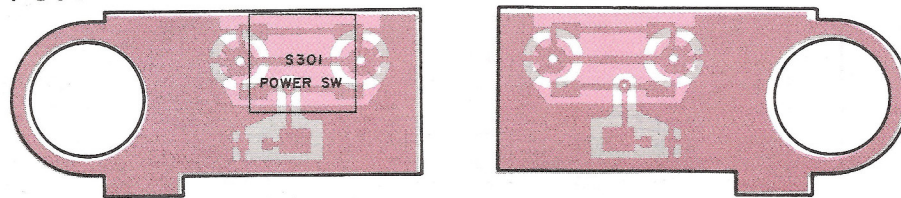


- ★ Q345, Q347, Q360
- ★ Q344, Q346, Q359, Q310
- ★ Q323, Q324
- ★ Q307
- ★ Q304
- ★ Q353, Q318

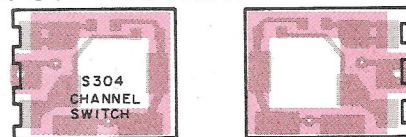
(SHOWN FROM SOLDER SIDE)

\* : MOUNTED ON COMPONENT SIDE

### P306 PWR SW



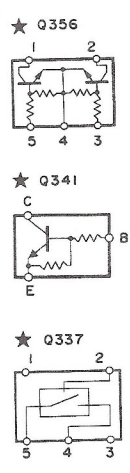
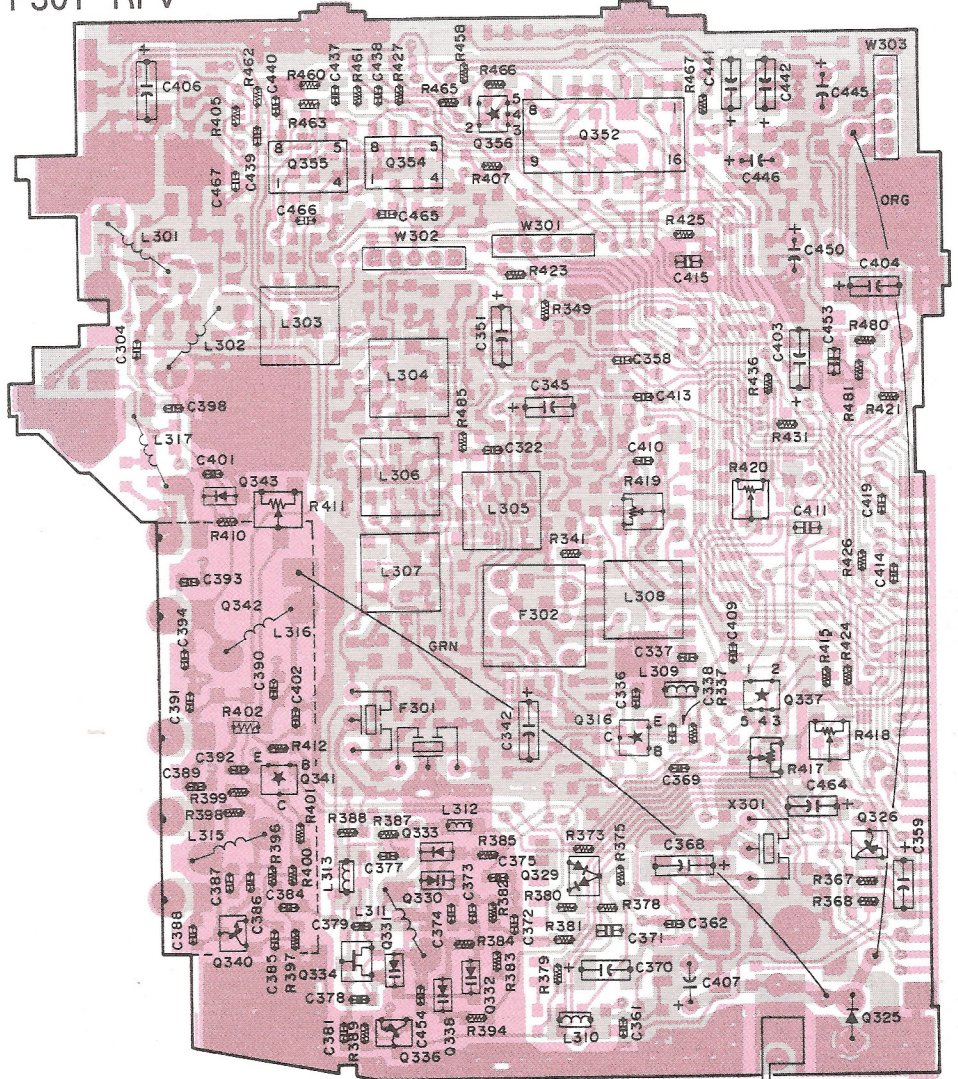
### P305 ROTARY



P  $\triangle$  2 < 0033 >

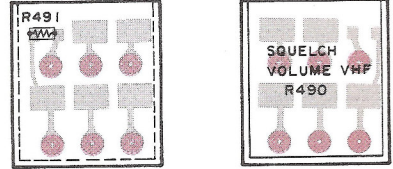


### P301 RFV

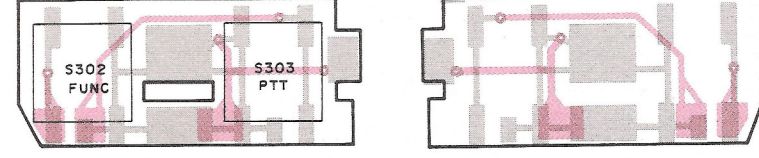


(SHOWN FROM COMPONENT SIDE) J301 BATTERY TERMINAL

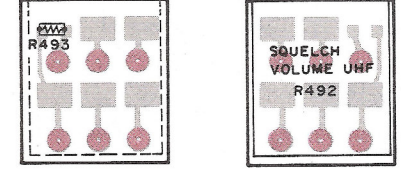
### P303 VOL.V



### P302 SW



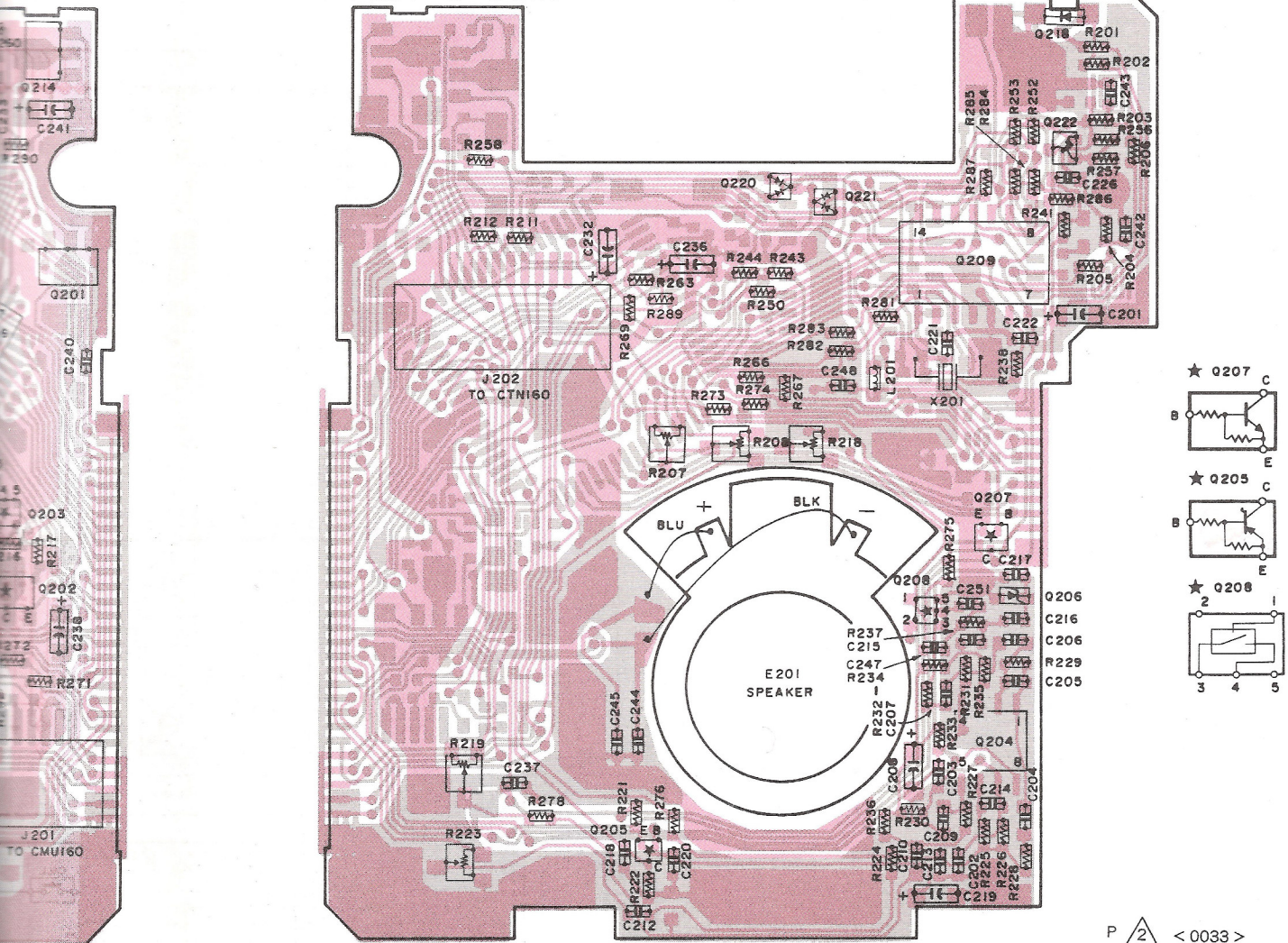
### P304 VOL.U



● (COMPONENT SIDE PATTERN)  
● (SOLDER SIDE PATTERN)



### P201 U COM



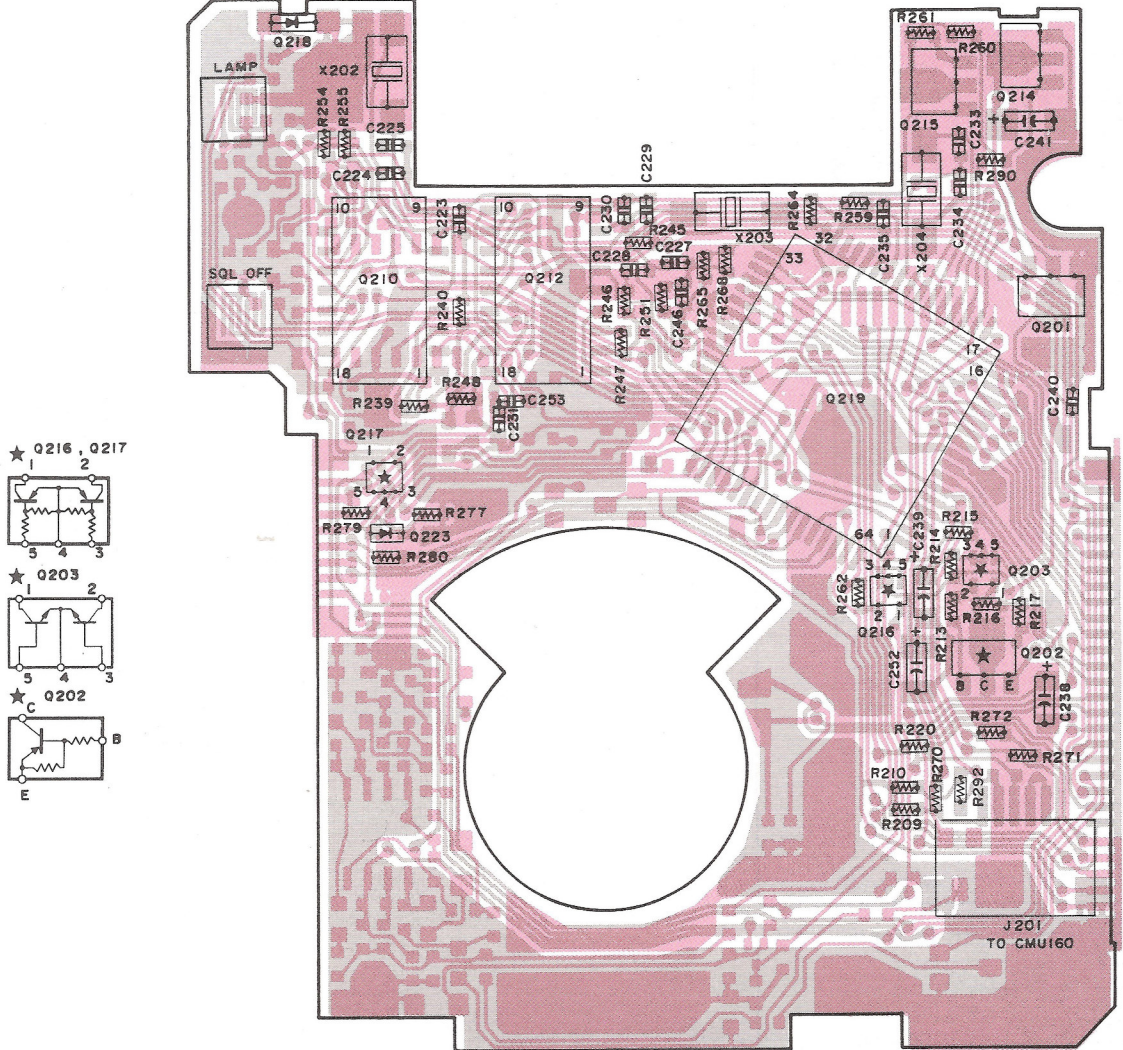
P  $\triangle$  2 < 0033 >

(SHOWN FROM SOLDER SIDE)

\* : MOUNTED ON COMPONENT SIDE



## P201 U COM



(SHOWN FROM COMPONENT SIDE)