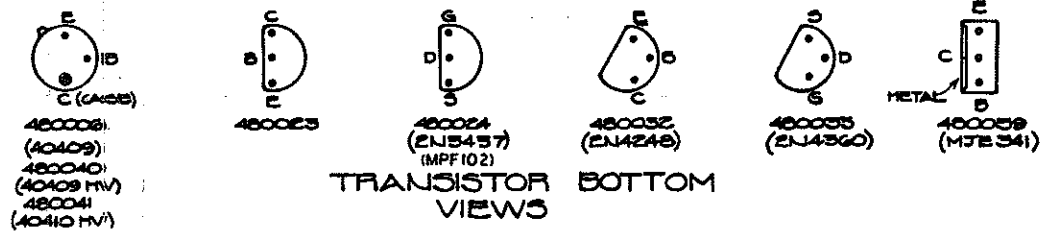


MusicParts TechTips

Output transistors are 2N3773
Do not mix manufactures



170043 CH.'A'
(SEE DWG. E1440)

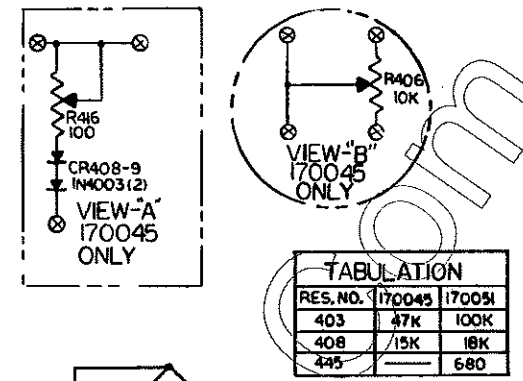
(BLU)'A' OUT J
(YEL) TREM. FEEDBACK H
(BRN) TREM. FET MOD. F
(BLK) SIG. GND. E
(ORG) +34V D
(GRN/WH) IN FROM EQ. A

TREB. MID BASS DIST REVERB

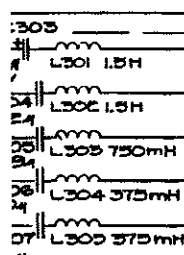
170046 CH.'B'
(SEE DWG. E1440)

(GRN/WH) REV. IN N
(BLK/WH) REV. M
(GREY) REV. L
N/C K
(BLK) PWR. GND. J
(GRN)'A' OR 'B' OUT H
(BLU)'X' IN F
(YEL) TREM. FEEDBACK E
(BRN) TREM. FET MOD. D
(BLK) SIG. GND. C
(ORG) +34V A

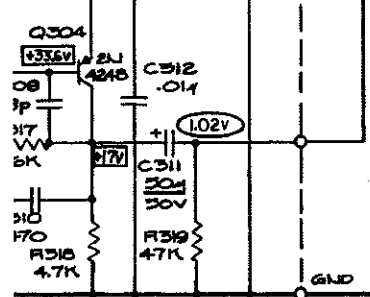
TREB. MID. BASS SPEED INTENS.



TABULATION		
RES. NO.	170045	170051
403	47K	100K
408	15K	18K
445		680



170044



395X

LINE OUTPUT ISOLATION -9.5dB (0.3X)

0.22V

POWER OUTPUT AMPLIFIER +42dB (100X)

RATED 65V @ 4A

Q1 ECN 1419	4-30-74 WS
DATE NONE	DESIGNER JG
REV 9-15-73	DESIGNED BY Jack Duff
SCHEMATIC 470	
ACUSTIC CONTROL	REVISED BY
DATE	E71005401

