

07-524-01 BOARD ASSY.

Q1	6RN 1 FB	21 513 01
Q2	6RN LEB .3" SPKR	21-511-31
Q3-7	1N914	21A914-31
Q8	1N746	21A146-31
Q9-14	1N4007	21A407-31
JW1-33	JUMPER WIRE	76-000-35
V1-3	12AX7	92 9E7 31
Q1	J176	96-776-01
Q2-4	2N5216	96-510-01
VR1	LINCOMB REG	37-708-01
VR2	LINCOMB REG	37-908-01
IC1-5	RC455 NP AMP	37-458 01
P1, P2, P3	3MA	70-105-22
P3	53K	70-133-01
P5-11	57K 51 TFR	70-563-25
AP1	2J0 TRIM	71-201-11
S1, S3	DOUBLE PB SWITCH	88-383-01
S2	5 POS SWITCH	88 100 01
S4	DPDT P3 SWITCH	88-302-01
S5	LINE SELECT SWITCH	88-214-01
T1	POWER TRANSFORMER	54-027-20
L1	TAPPED INDUCTOR	54-602-22
J1, 2	1/4" MONO JACK	29-119-01
J3, 4	1/4" MONO JACK	29-114-01
J5	XLR JACK	29 300 01
J6	1/4" MINI JACK	29-116-01
J7	AC CORD RECEPTACLE	17-682-01
J8	R A LUG	21-149-01
J9, 10	107" TAE	17-894-01
J11, J12	R A LUG	21-149-01
F1, 2	1/16 A GE	23-317-05

**NOTES**

- 1) CAUTION: CHECK HAZARD!! THIS UNIT CONTAINS HAZARDOUS VOLTAGE. DISCONNECT POWER AND BE SURE POWER SUPPLY IS DISCHARGED BEFORE TOUCHING INTERNAL PARTS.
- 2) UNLESS NOTED, RESISTOR VALUES IN OHMS, 1/4W-5% TT. CAPACITOR VALUES IN MICROFARADS, 50V-10% TT.
- 3) VOLTAGES ARE MEASURED WITH 1 MPPMM OSCILLOSCOPE AND 10 MEGOHM DIGITAL VOLT METER.
- 4) CIRCUIT GROUND  $\text{h}$  TO GROUND  $\text{d}$  CHASSIS GROUND  $\text{+}$
- 5) SWITCHES SHOWN IN "OUT" POSITION.

**CAUTION:**

THIS SCHEMATIC IS PROVIDED FOR USE BY QUALIFIED PERSONNEL. TO AVOID RISK OF ELECTRIC SHOCK, REFER SERVICING TO QUALIFIED SERVICE PERSONNEL. DO NOT PERFORM ANY SERVICING BEYOND THAT EXPLAINED IN THE OPERATING INSTRUCTIONS.

TEST POINTS	DC VOLTAGE	AC SIGNAL
INPUT @ 1KHz 50mV p-p		
1	0V	60mv p-p
2	19V	1.7v p-p
3	19V	20v p-p
4	25V	31v p-p
5	0V	1v p-p
6	0V	1v p-p
7	0V	1v p-p
8	20V	—
9	275V	—
10	6V AC	—

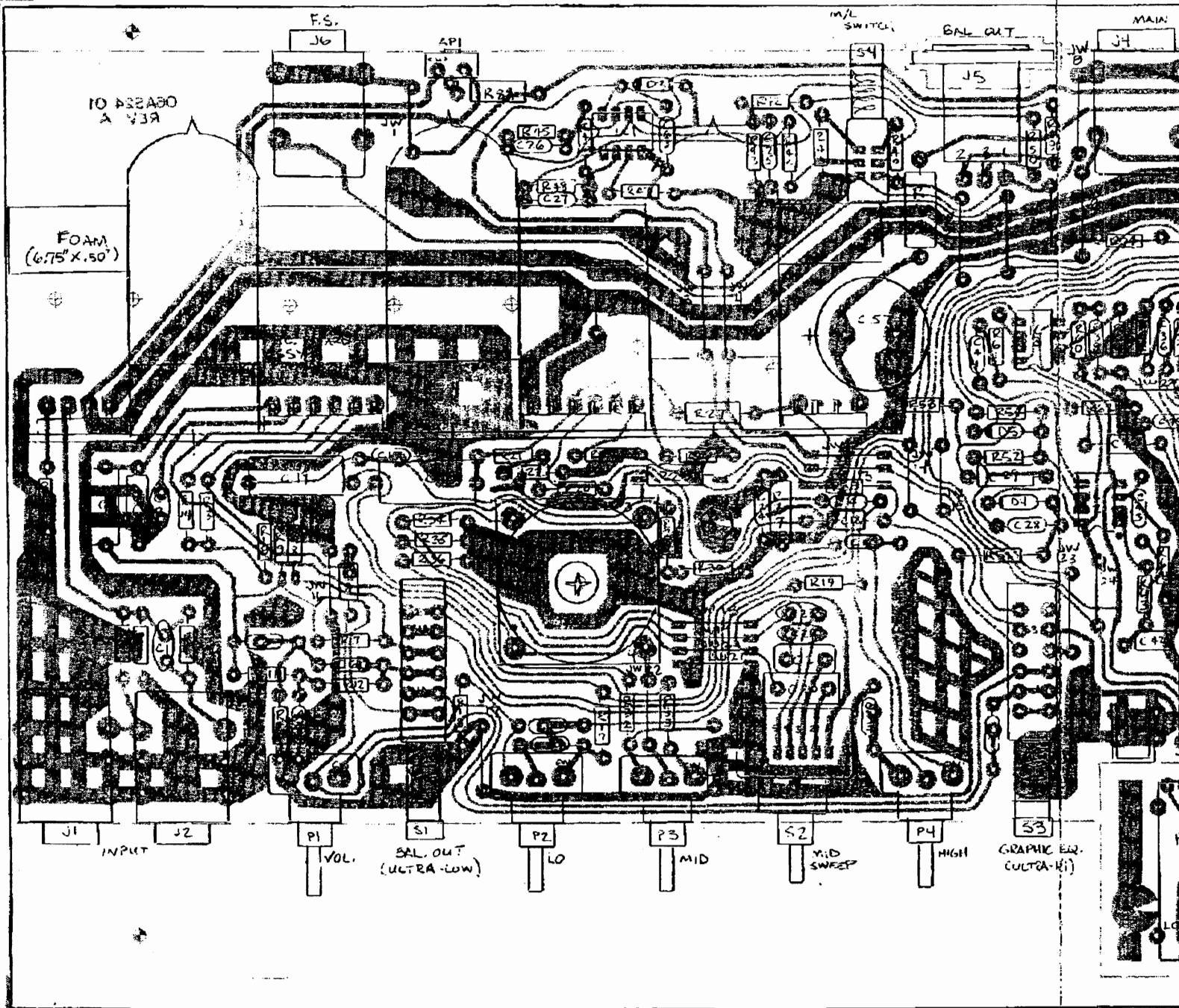
IN 0.2V DC WITH EQ ENABLED  
VOLTAGE MEASURED BETWEEN PINS 5 & 6 OF TUBES

CRIS. MGA 1/20/90	<i>Jm</i>	<i>Jm</i>	
VFRS.	DRAWN BY	CHECKED BY	APPROVED BY
PAGE #	1 OF 1	DRAWING #	16-423-01
DESCRIPTION: SVT-1 <sup>2</sup> SCHEMATIC			



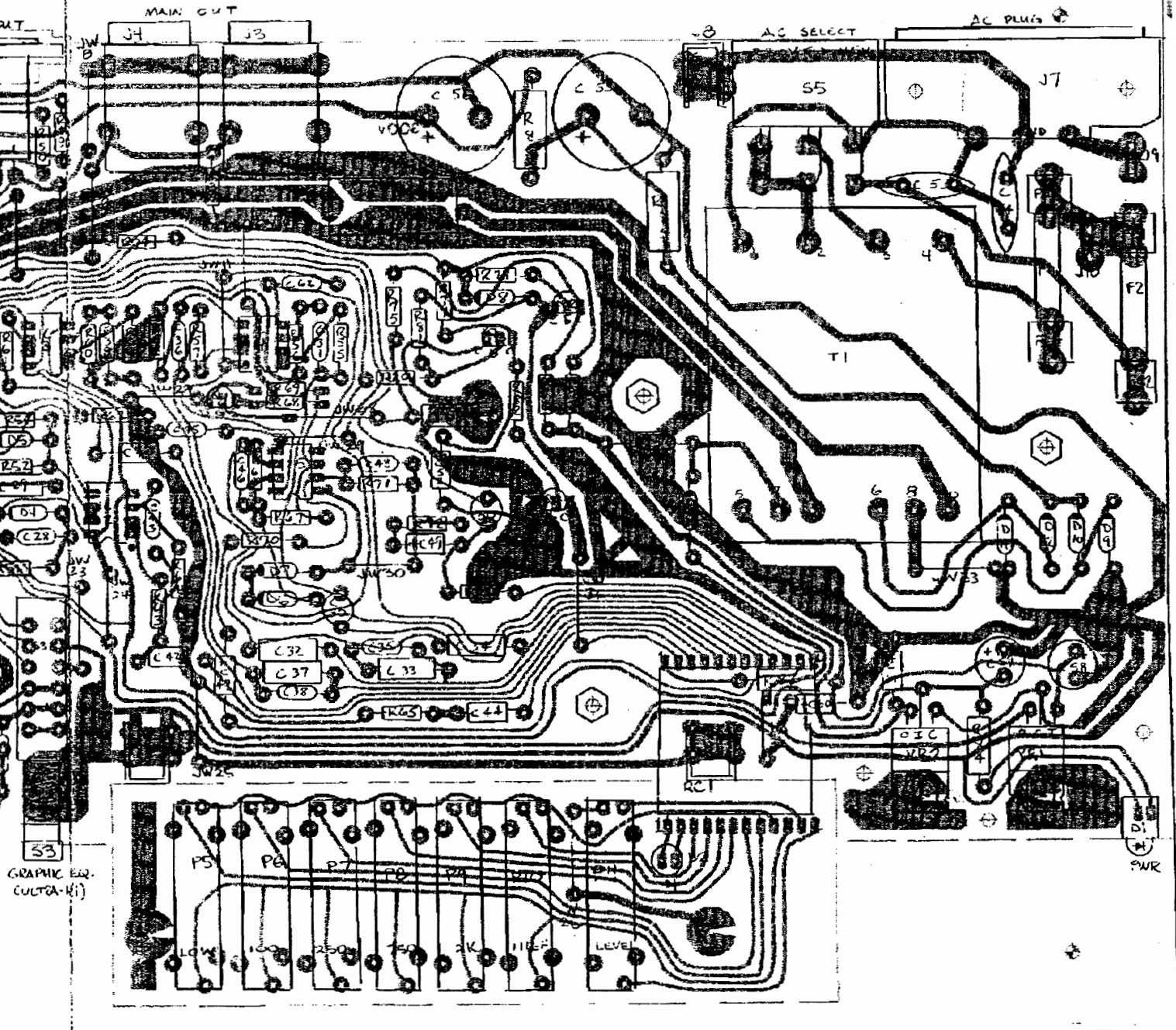
**SLM ELECTRONICS**  
11880 BORMAN DR.  
ST. LOUIS, MO 63146

R3	5.2K	76-337-01	R37	10 1/2W	77-100-01	R61	220K	76-224-01	C4	.0022/100V	10A222-11
R5	1.5K	76-152-01	R38	100K	76-104-01	R62	10K	76-103-01	C5	.0022/100V	10A222-11
R6	220K 1/2W	77-224-01	R39	100K	76-104-01	R63	10K	76-103-01	C6	.0022/100V	10A222-11
R7	470K	76-474-01	R40	120K	76-124-01	R71	3.3K	76-332-01	C7	.470p/200V	10A471-21
R8	10K	76-104-01	R41	120K	76-124-01	R72	10K	76-104-01	C8	.175p/200V	10A104-01
R9	120K	76-124-01	R42	47K	76-153-01	R73	2.2K	76-224-01	C9	.175p/200V	10A104-01
R10	68K	76-682-01	R43	47K	76-173-01	R74	1K	76-102-01	C10	.001/100V	10A103-11
R11	150K	76-154-01	R44	15K	76-153-01	R75	100K	76-104-01	C11	.01/100V	10A103-11
R12	150K	76-154-01	R45	47K	76-473-01	R76	47K	76-474-01	C12	.470p/200V	10A471-21
R13	220K	76-224-01	R46	10K	76-103-01	R77	100K	76-104-01	C13	.0047/100V	10A472-11
R14	1.5K	76-152-01	R47	4.7K	76-473-01	R78	100K	76-104-01	C14	.175p/200V	10A104-01
R15	3.3K	76-332-01	R48	10K	76-103-01	R79	1.5K	76-152-01	C15	.58/200V PUL	10-584-21
R17	220K	76-224-01	R49	330	76-331-01	R80	10K	76-103-01	C17	50p/200V	10A500-21
R18	22K	76-224-01	R50	1.5K	76-151-01	R81	10K	76-103-01	C18	10/10V	12A106-11
R19	120K	76-124-01	R51	22K	76-223-01	R82	5.7K	76-472-01	C19	.58/200V PUL	10-584-21
R20	220K	76-224-01	R52	22K	76-223-01	R83	10K	76-103-01	C20	.22/100V PUL	10-224-03
R21	560	76-561-01	R53	220K	76-224-01	R84	1.5K 1/2W	77-152-01	C21	.15/100V PUL	10-154-02
R22	10K	76-103-01	R54	6.8K	76-682-01	R85	1.5K 1/2W	77-152-01	C22	.032/100V PUL	10-333-02
R23	1K	76-103-01	R55	1.5K	76-153-01	R86	200K 1W	76-204-01	C23	.033/100V PUL	10-333-02
R24	1K	76-103-01	R56	220K	76-224-01	R87	2K 2W	76-202-01	C24	.047/100V	10A472-11
R25	3.3K	76-332-01	R57	1K	76-102-01	R88	2K 2W	76-202-01	C25	100p/200V	10A101-21
R27	100K 1/2W	77-104-01	R58	220K	76-224-01	R89	.33 5W	70-330-05	C26	100p/200V	10A101-21
R28	100K 1/2W	77-104-01	R59	1K	76-102-01	R90	100 1/2W	77-104-01	C27	330p/100V	10A331-11
R29	2.2K	76-224-01	R60	100K	76-104-01				C28	.022	10A223-01
R30	4.7K	76-472-01	R61	1K	76-102-01				C29	.022	10A223-01
R31	22K	76-224-01	R62	220K	76-224-01				C30	10/20V NP	12-106-41
R32	560	76-561-01	R63	1K	76-102-01				C31	.0047/100V	10A471-21
R33	470	76-471-01	R64	220K	76-224-01				C32	.22	10A224-01
R34	220K	76-224-01									



R86, R87 ON 1/4\"/>

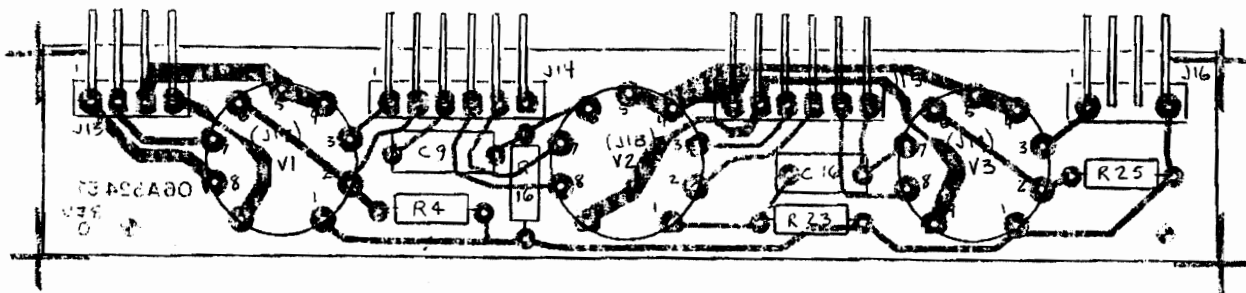
10A222-11	C36	.015	10A103-01	LJ	TAPPED INDUCTOR	94-602-02	54	DPDT DB SWITCH	68-302-01
10A222-11	C37	.22	10A224-01	D1	GRN LED	21-513-01	55	LINE SELECT SWITCH	58-214-01
10A222-11	C38	.1/50V	10A104-01	D2	GRN LED .3" SPCR	21-511-01	T1	POWER TRANSFORMER	94-027-20
10A471-21	C39	.0068	10A697-01	D3-7	1N914	210914-01	J1,2	1/4" MONO JACK	39-119-01
10A104-01	C40	.1/50V	10A104-01	D9-14	1N746	210407-01	J3,4	1/4" MONO JACK	39-116-01
10A102-11	C41	.0022/100V	10A222-11	JM1-33	WAMP'S WIRE	75-000-05	J5	XLR JACK	39-308-01
10A103-11	C42	.047/100V	10A472-11	D1	J176	56-176-01	J6	1/8" PHONO JACK	39-115-01
10A471-21	C43	.047/100V	10A472-11	U2-4	2N5210	56-510-01	J7	AC CORD RECEPTACLE	17-400-01
10A472-11	C44	.047/100V	10A473-11	VR1	LM7005 REG	37-700-01	J8	R A LUG	31-149-01
10A104-01	C45	.047/100V	10A697-01	VR2	LM7908 REG	37-308-01	J9,10	R A LUG	17-894-01
10-58A-21	C46	500W/100V	10A697-01	IC1-5	RC456A OP AMP	37-458-01	J11,12	R A LUG	51-140-01
10A500-21	C47	10/16V	12A106-11	P1	1MΩ	70-103-02	F1,2	1/16" R SB	23-387-05
12A106-11	C48	500p/100V	10A697-01	P2	1MΩ	70-105-02	KL1	RIBBON CABLE	99-124-02
10-58A-21	C49	10/16V	12A106-11	P3	500Ω	70-133-01			
10-224-03	C50	10/50V NP	12-105-81	P4	1MΩ	70-105-02			
10-134-02	C51	.02	10A224-01	P5-11	500Ω SLIDER	70-503-01			
10-333-02	C52	10/16V	12A106-11	RP1	200 TRIM	71-201-14			
10A473-11	C53	.0027 UL	10-272-01						
10A101-21	C54	.0027 UL	10-272-01						
10A101-21	C55	47/450V	10-470 AC						
10A331-11	C56	47/450V	10-470 AC						
10A223-01	C57	47/450V	12-476-02						
10A224-01	C58	100/32V	12-107-32						
12-106-81	C59	100/32V	12-107-32						
10A472-11	C60	10/16V	12A106-11						
10A224-01	C61	.047/100V	10A473-11						
	C62	.047/100V	10A473-11						



37 CN 1/4" NYLON SPACERS

TOLERANCES		REV. HISTORY		SVT-UP P.C. BOARD	
UNLESS NOTED		NO.	DATE	BY	
DECIMAL		1			
FRACTIONAL		2			
ANGLES		3			
		4			
		5			

DESIGNED BY: [ ] DATE: [ ] MATERIAL: [ ]  
 CHECKED BY: [ ] DATE: [ ] DRAWING NO: 07-524-01  
 FACED: [ ]



R4	*	100K 1/2W 1%	77-104-02
R16	*	100K 1/2W 1%	77-104-02
R23	*	220K 1/2W	77-224-01
R25	*	470K	76-474-01
IS	*	1/2400V PPLY	10-104-41
C9	*	0.01400V PLY	10-104-41
V1-V2	*	1PAX7	97-927-01
J13	*	4 PIN R A HEADER	17-311-04
J14, 15	*	6 PIN R A HEADER	17-311-06
J16	*	4 PIN R A HEADER	17-311-04
J17-19	*	3 PIN SOCKET	17-450-09
(1)	*	PC BOARD (118E)	06R524-5J

TOLERANCES		REVISIONS			SVT-II P TUBE BD.		
DECIMAL	FRACTIONAL	NO.	DATE	BY	DRAWN BY	SCALE	MATERIAL
±	±	1			REM	2X	
±	±	2					
±	±	3					
±	±	4					
±	±	5					
±	±	6					
±	±	7					
±	±	8					
±	±	9					
±	±	10					
±	±	11					
±	±	12					
±	±	13					
±	±	14					
±	±	15					
±	±	16					
±	±	17					
±	±	18					
±	±	19					
±	±	20					
±	±	21					
±	±	22					
±	±	23					
±	±	24					
±	±	25					
±	±	26					
±	±	27					
±	±	28					
±	±	29					
±	±	30					
±	±	31					
±	±	32					
±	±	33					
±	±	34					
±	±	35					
±	±	36					
±	±	37					
±	±	38					
±	±	39					
±	±	40					
±	±	41					
±	±	42					
±	±	43					
±	±	44					
±	±	45					
±	±	46					
±	±	47					
±	±	48					
±	±	49					
±	±	50					
±	±	51					
±	±	52					
±	±	53					
±	±	54					
±	±	55					
±	±	56					
±	±	57					
±	±	58					
±	±	59					
±	±	60					
±	±	61					
±	±	62					
±	±	63					
±	±	64					
±	±	65					
±	±	66					
±	±	67					
±	±	68					
±	±	69					
±	±	70					
±	±	71					
±	±	72					
±	±	73					
±	±	74					
±	±	75					
±	±	76					
±	±	77					
±	±	78					
±	±	79					
±	±	80					
±	±	81					
±	±	82					
±	±	83					
±	±	84					
±	±	85					
±	±	86					
±	±	87					
±	±	88					
±	±	89					
±	±	90					
±	±	91					
±	±	92					
±	±	93					
±	±	94					
±	±	95					
±	±	96					
±	±	97					
±	±	98					
±	±	99					
±	±	100					

07-524-51