

14	FX RETURN	13	TUNER OUT
12	PWR AMP IN	12	PRE BAL OUT
11	PREAMP GND	11	POST BAL OUT
10	PREAMP GND	10	PREAMP GND
9	PREAMP GND	9	PREAMP GND
8	FOOTSWITCH TIP	8	FX SEND
7	LED GND	7	FOOTSWITCH RING
6		6	
5		5	
4		4	
3		3	
2		2	
1		1	

TO ADJUST BIAS:

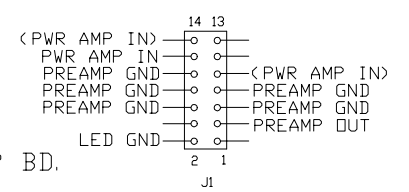
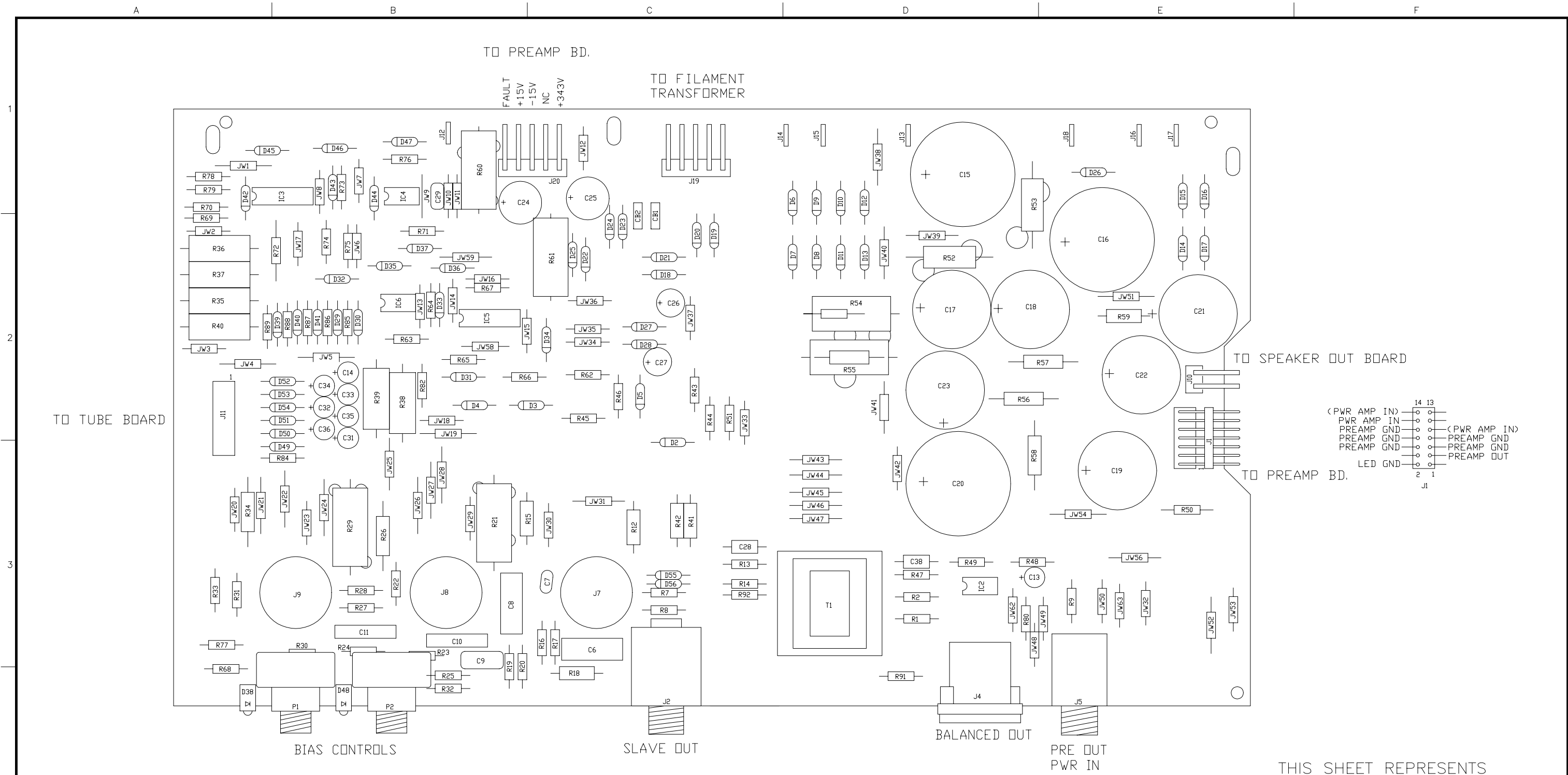
ALLOW UNIT TO WARM UP FOR 20 MINUTES.
 ADJUST BIAS CONTROLS SO THAT ONLY THE GREEN LEDS
 ARE LIT. FOR UNMATCHED TUBES THIS CONDITION MAY
 NOT BE ABLE TO BE MET. IF SO ADJUST CONTROLS
 SO THAT ONLY THE RED LEDS ARE LIT. SEE THE OWNER'S
 MANUAL FOR TROUBLESHOOTING TIPS USING THE BIAS
 CONTROLS AND LEDS.

THIS DRAWING SUPERSEDES 07-419-03/11

PART NO. IS 07-419-04

B	7-28-00	CHANGED PARTS LIST	D000685	RLB		
A	4-11-00	INITIAL ISSUE	D000624			
REV:	DATE:	DESCRIPTION	ECR/ECN NO:	CHNG'D BY:	APPR'D BY:	DATE:
THE INFORMATION CONTAINED ON THIS DRAWING IS PROPRIETARY TO ST. LOUIS MUSIC, INC.						
SIGNATURES:			DATE:			
DRAWN: RLB			12-22-99			
CHK'D:			FIRST USED ON:			
RLS'D:			SVT-2PRO			
TOLERANCES:		DRAWING SIZE: C		DRAWING TITLE:		
		DRAWING TYPE: ASSEMBLY		PWA, POWER AMP		
		CLASS CODE:		DRAWING NO.:		
		SCALE: 1:1 SHEET: 1 OF 4		07-419-XX		

SLM Electronics 11880 Borman Dr.
 St. Louis, Missouri
 63146



THIS SHEET REPRESENTS
PART NO. 07-419-12

TO ADJUST BIAS:

ALLOW UNIT TO WARM UP FOR 20 MINUTES.
ADJUST BIAS CONTROLS SO THAT ONLY THE GREEN LEDES ARE LIT. FOR UNMATCHED TUBES THIS CONDITION MAY NOT BE ABLE TO BE MET. IF SO ADJUST CONTROLS SO THAT ONLY THE RED LEDES ARE LIT. SEE THE OWNER'S MANUAL FOR TROUBLESHOOTING TIPS USING THE BIAS CONTROLS AND LEDES.

B	7-28-00	CHANGED PARTS LIST	D000685	RLB		
A	4-11-00	INITIAL ISSUE	D000624			
REV:	DATE:	DESCRIPTION	ECR/ECN NO:	CHNG'D BY:	APPR'D BY:	DATE:
THE INFORMATION CONTAINED ON THIS DRAWING IS PROPRIETARY TO ST. LOUIS MUSIC, INC.						
SIGNATURES:			DATE:			
DRAWN: RLB			12-22-99			
CHK'D:			FIRST USED ON:			
RLS'D:			SVT-2PRO			
TOLERANCES:	DRAWING SIZE: C		DRAWING TITLE:			
	DRAWING TYPE: ASSEMBLY		PWA, POWER AMP			
	CLASS CODE:		DRAWING NO.:			
	SCALE: 1:1	SHEET: 3 OF 4	07-419-XX			

SLM Electronics 11880 Borman Dr.
St. Louis, Missouri 63146

