

SCHMATIC SHOWS BP25-MCR LEFT CH AUDIO - RIGHT CH IDENTICAL

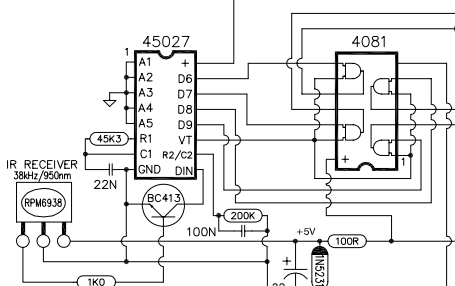
**NOTES:**

USE PAD WITH +4DBM SOURCES

FLEXIBLE JUMPERS

Conductor with grounded shield

OFF-BOARD CONNECTIONS



**Rev 1.6A 15 APRIL 02 ST**  
ADD 1MEG TO + BUFFER INPUT

**Rev 1.7 1 Aug 03 WP**  
Corrected dwg error to gnd'ng at selector switch Inputs

**Rev 1.8 2004-04-08 WP**  
Updated PSU schematic and corrected phono input adding 220pF cap.

**Rev 2 2007-12-21 ST**  
Multiple corrections & updates

**REVISION HISTORY**

**Rev 1.5e 17 Aug 2000 WP**  
IR receiver replaced with updated part RPM6938 (Rohm)

**Rev 1.6 09 Aug 2001 ST**  
HEADPHONE MUTE WIRING SHOWN

**Rev 1.61 26 Sept 01 WP**  
20N cap in RC receiver (45027) repaced with 22n and the 49K9 in parallel with it is chg'd to 45K3. Two 100u/50v caps on output of 8v regulator replaced with single 2200u/35v cap.

SCHMATIC ACCURACY NOT GUARANTEED



**BP26 PREAMP**

MAIN SCHEMATIC

FILE: BP26-SCHMATIC-2 PART No:  
DATE: 2007 12 21 DWG BY: ST REV: 2

