

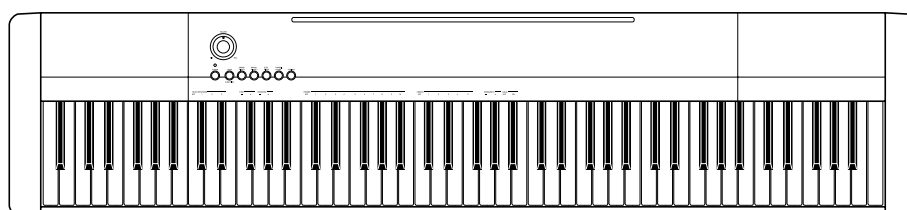
# CASIO®

# SERVICE MANUAL & PARTS LIST

(without price)

## CDP-120

JUL. 2011



CDP-120

**ELECTRONIC KEYBOARD**

Ver. 1 : Dec. 2012

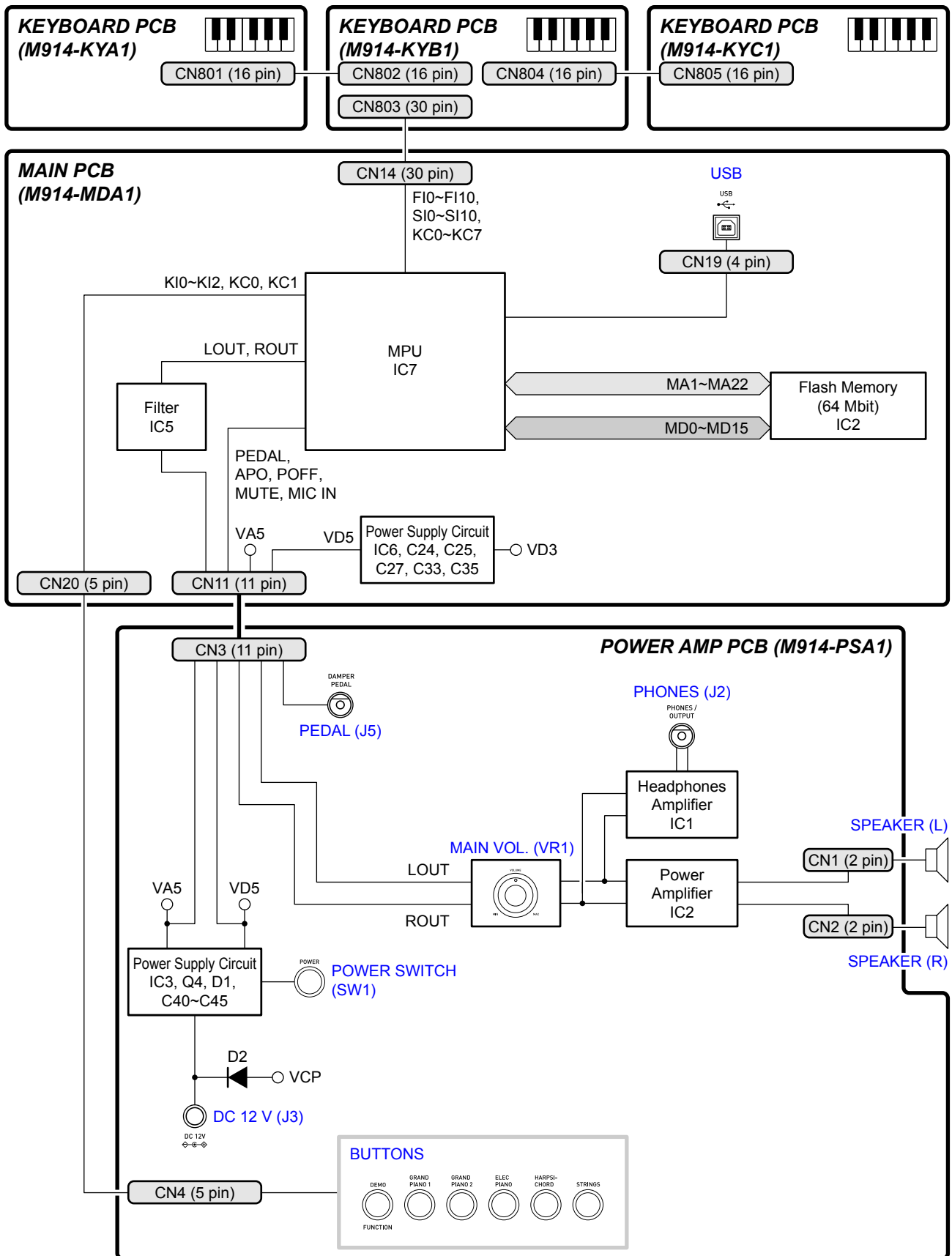
## CONTENTS

<b>SPECIFICATIONS.....</b>	<b>1</b>
<b>BLOCK AND WIRING DIAGRAM .....</b>	<b>2</b>
<b>PCB INFORMATION .....</b>	<b>3</b>
<b>CIRCUIT DESCRIPTION .....</b>	<b>4</b>
<b>PRINTED CIRCUIT BOARDS.....</b>	<b>6</b>
<b>DISASSEMBLY .....</b>	<b>9</b>
<b>DIAGNOSTIC PROGRAM .....</b>	<b>25</b>
<b>EXPLODED VIEW.....</b>	<b>28</b>
<b>PARTS LIST .....</b>	<b>30</b>
<b>SCHEMATIC DIAGRAMS.....</b>	<b>33</b>

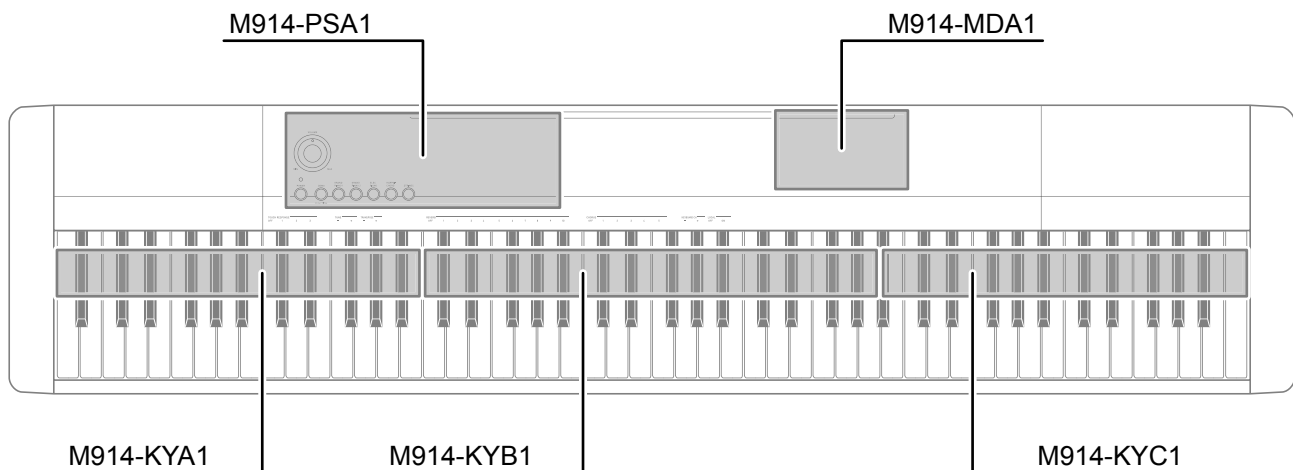
## SPECIFICATIONS

<b>Keyboard</b>	88-key piano keyboard
<b>Touch Response</b>	3 types, Off
<b>Maximum Polyphony</b>	48 notes (24 for certain tones)
<b>Tones</b>	
<b>Built-in Tones</b>	5; with layer
<b>Reverb</b>	1 to 10, Off
<b>Chorus</b>	1 to 5, Off
<b>Demo Songs</b>	5 songs (tone demo songs)
<b>Other Functions</b>	
<b>Transpose</b>	±1 octaves (-12 to +12 semitones)
<b>Tuning</b>	A4 = 415.5 to 465.9 Hz (Initial Default: 440.0 Hz)
<b>MIDI</b>	16 multi-timbre received, GM Level 1 standard
<b>Inputs/Outputs</b>	
<b>USB port</b>	TYPE B
<b>Damper Pedal jack</b>	Standard jack
<b>Phones/Output jack</b>	Stereo standard jack
	Output Impedance: 3 Ω, Output Voltage: 1.5 V (RMS) MAX
<b>Power Jack</b>	12 V DC
<b>Power Supply</b>	
<b>AC Adaptor</b>	AD-A12150LW
<b>Auto Power Off</b>	30 minutes after last key operation, Auto Power Off can be disabled.
<b>Speakers</b>	(12 cm × 6 cm oval) × 2
<b>Output</b>	8 W + 8 W
<b>Power Consumption</b>	12 V --- 18 W
<b>Dimensions</b>	132.2 × 28.6 × 12.9 cm (52 1/16 × 11 1/4 × 5 1/16 inch)
<b>Weight</b>	Approximately 11.4 kg (25.1 lbs)

# BLOCK AND WIRING DIAGRAM



## PCB INFORMATION



Classification	Parts Name	PCB Name	Components
Main PCB	PCB UNIT/MAIN	M914-MDA1	MPU, Flash Memory (64 Mbit), Power Supply Circuit, Filter, USB Port
Power Amp PCB	PCB UNIT/PSA1	M914-PSA1	Power Supply Circuit, Power Amplifier Headphones Amplifier, Power Switch, Main Volume, DC 12 V Terminal, DAMPER PEDAL Jack, PHONES/OUTPUT Jack, Buttons
Keyboard PCB	PCB UNIT/KY and RUBBER CONTACT	M914-KYA1	Keyboard
		M914-KYB1	
		M914-KYC1	

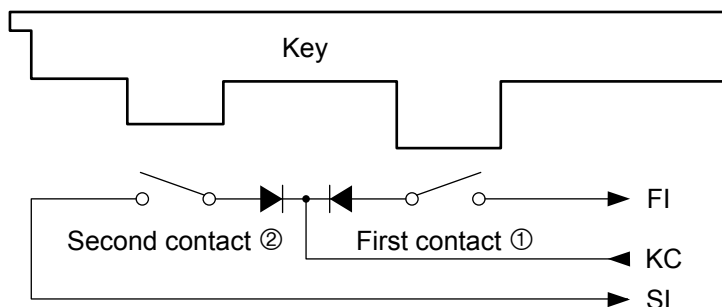
## CIRCUIT DESCRIPTION

### ■ KEY MATRIX

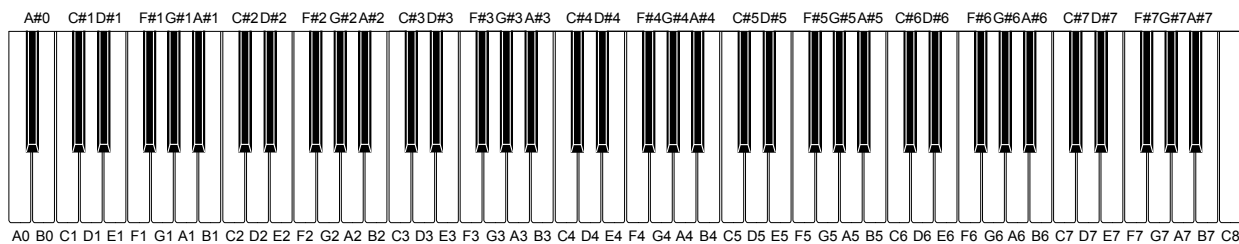
	KC0	KC1	KC2	KC3	KC4	KC5	KC6	KC7
<b>FI0</b>	A0①	A0#①	B0①	C1①	C1#①	D1①	D1#①	E1①
<b>SI0</b>	A0②	A0#②	B0②	C1②	C1#②	D1②	D1#②	E1②
<b>FI1</b>	F1①	F1#①	G1①	G1#①	A1①	A1#①	B1①	C2①
<b>SI1</b>	F1②	F1#②	G1②	G1#②	A1②	A1#②	B1②	C2②
<b>FI2</b>	C2#①	D2①	D2#①	E2①	F2①	F2#①	G2①	G2#①
<b>SI2</b>	C2#②	D2②	D2#②	E2②	F2②	F2#②	G2②	G2#②
<b>FI3</b>	A2①	A2#①	B2①	C3①	C3#①	D3①	D3#①	E3①
<b>SI3</b>	A2②	A2#②	B2②	C3②	C3#②	D3②	D3#②	E3②
<b>FI4</b>	F3①	F3#①	G3①	G3#①	A3①	A3#①	B3①	C4①
<b>SI4</b>	F3②	F3#②	G3②	G3#②	A3②	A3#②	B3②	C4②
<b>FI5</b>	C4#①	D4①	D4#①	E4①	F4①	F4#①	G4①	G4#①
<b>SI5</b>	C4#②	D4②	D4#②	E4②	F4②	F4#②	G4②	G4#②
<b>FI6</b>	A4①	A4#①	B4①	C5①	C5#①	D5①	D5#①	E5①
<b>SI6</b>	A4②	A4#②	B4②	C5②	C5#②	D5②	D5#②	E5②
<b>FI7</b>	F5①	F5#①	G5①	G5#①	A5①	A5#①	B5①	C6①
<b>SI7</b>	F5②	F5#②	G5②	G5#②	A5②	A5#②	B5②	C6②
<b>FI8</b>	C6#①	D6①	D6#①	E6①	F6①	F6#①	G6①	G6#①
<b>SI8</b>	C6#②	D6②	D6#②	E6②	F6②	F6#②	G6②	G6#②
<b>FI9</b>	A6①	A6#①	B6①	C7①	C7#①	D7①	D7#①	E7①
<b>SI9</b>	A6②	A6#②	B6②	C7②	C7#②	D7②	D7#②	E7②
<b>FI10</b>	F7①	F7#①	G7①	G7#①	A7①	A7#①	B7①	C8①
<b>SI10</b>	F7②	F7#②	G7②	G7#②	A7②	A7#②	B7②	C8②

Each key has two contacts, the first contact ① and second contact ②.

**NOTE:** The diagram below illustrates how the contacts work.



## ■ NOMENCLATURE OF KEYS

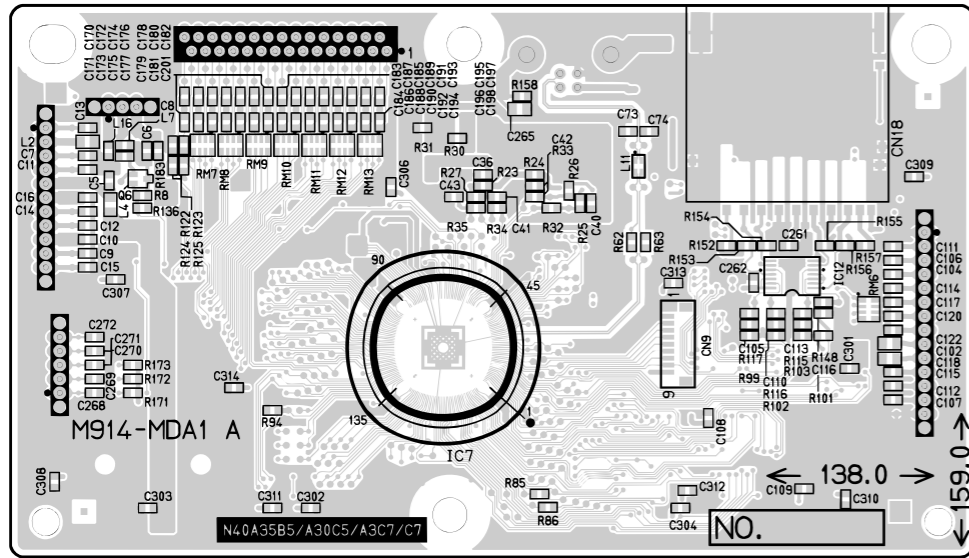


## ■ BUTTON MATRIX

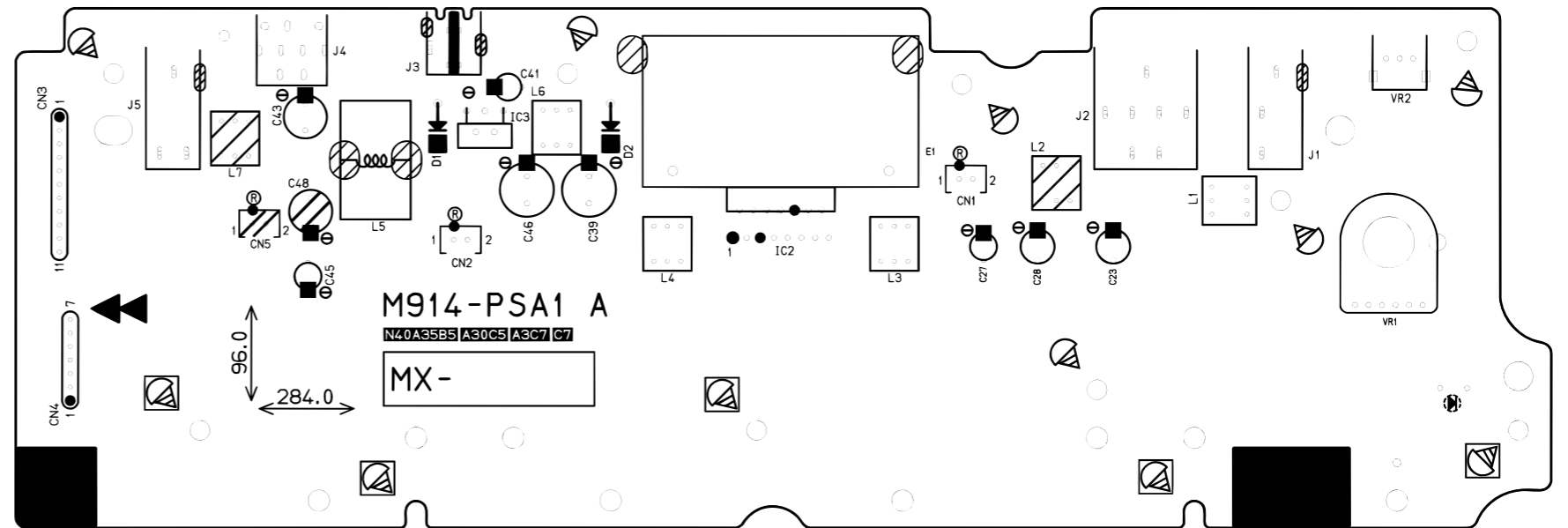
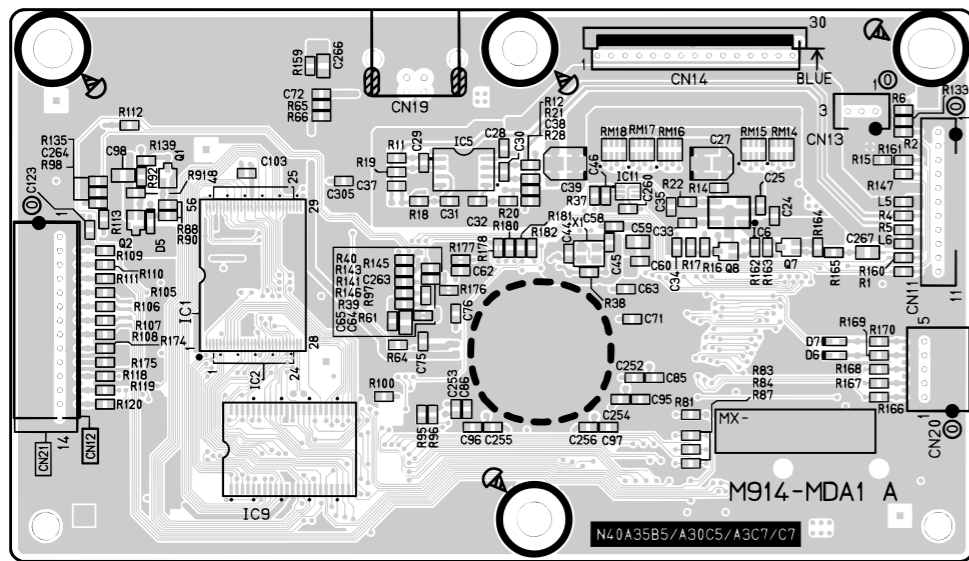
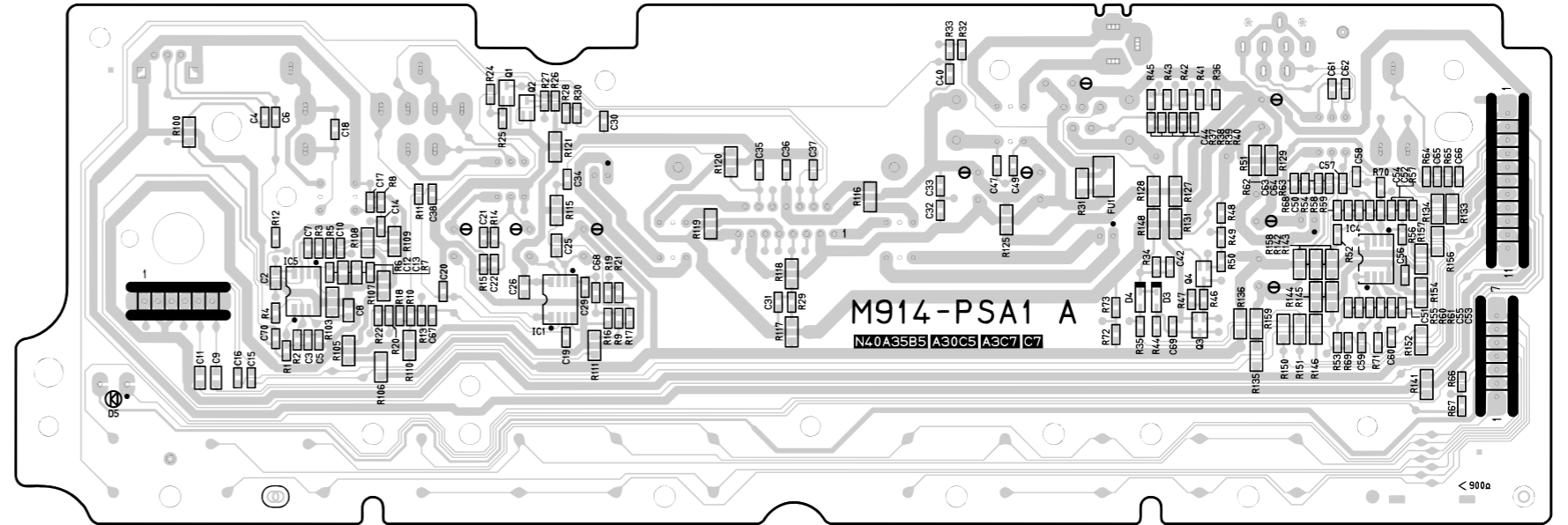
	SW00	SW01
SWI3	STRINGS	GRAND PIANO 2
SWI4	GRAND PIANO 1	HARPSICHORD
SWI5	DEMO, FUNCTION	ELEC PIANO

# PRINTED CIRCUIT BOARDS

Main PCB: M914-MDA1

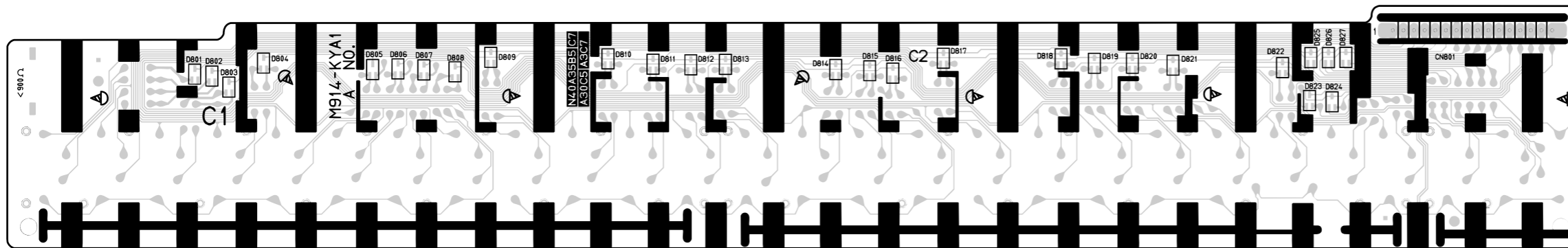
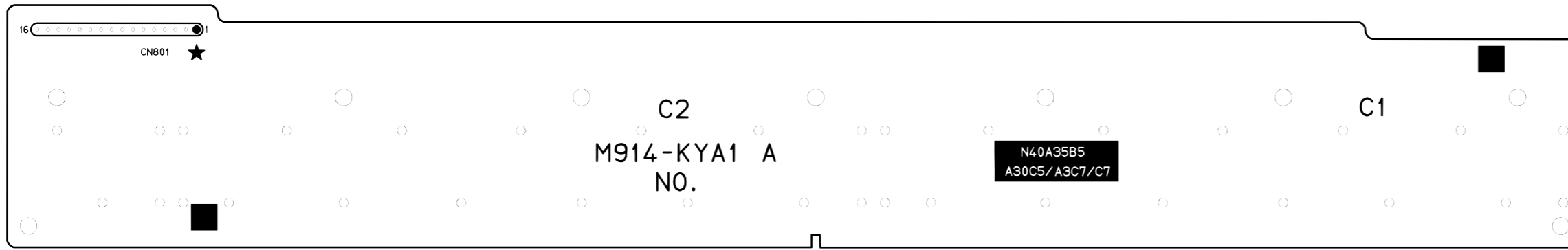


Power Amp PCB: M914-PSA1

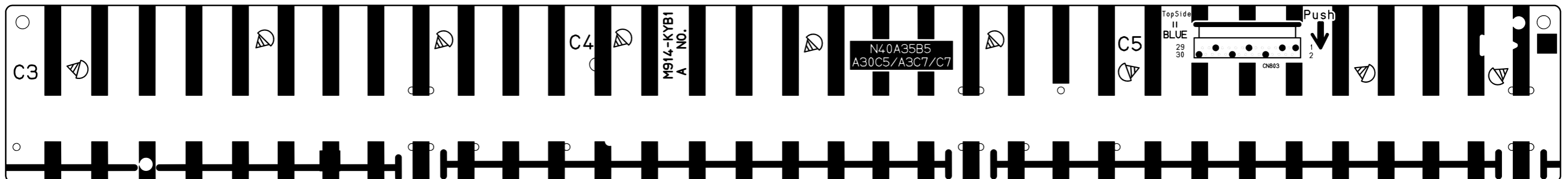
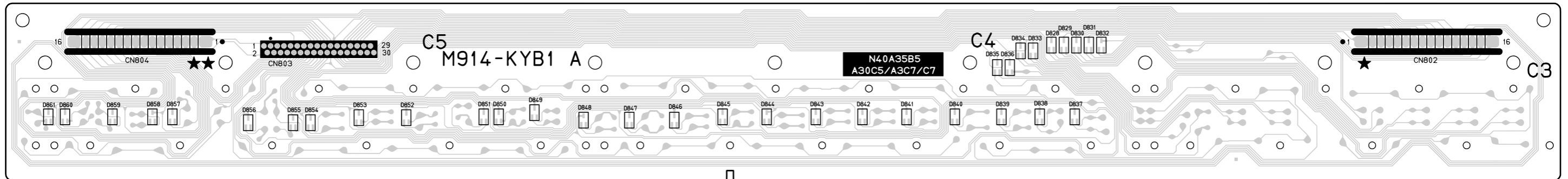




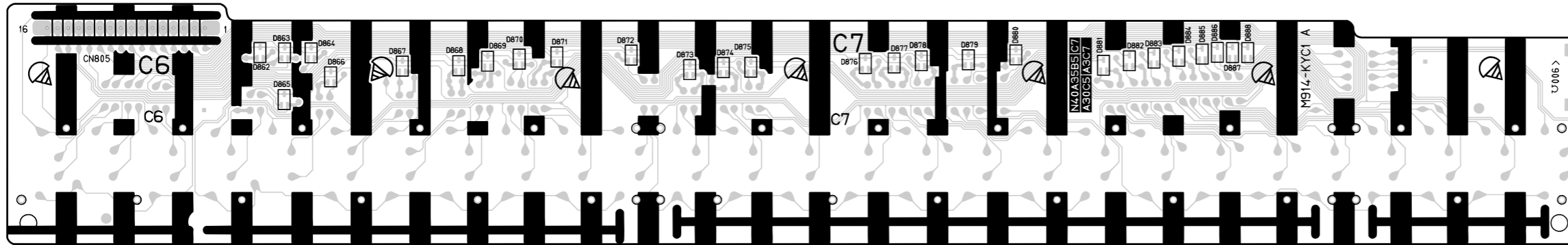
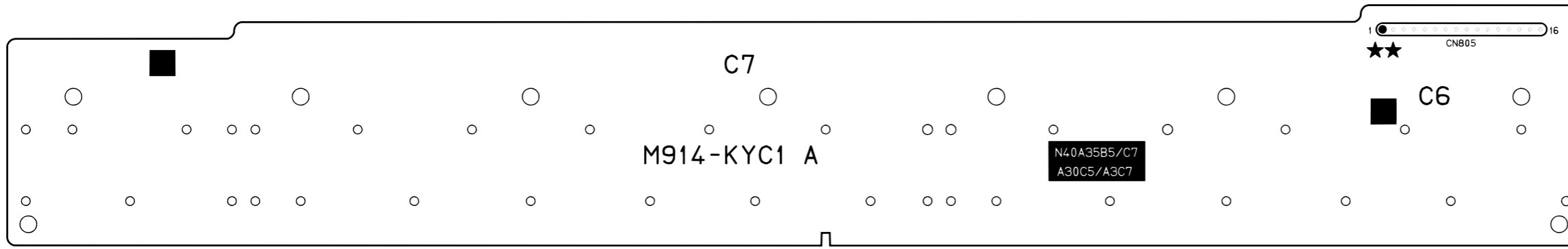
Keyboard PCB: M914-KYA1



Keyboard PCB: M914-KYB1



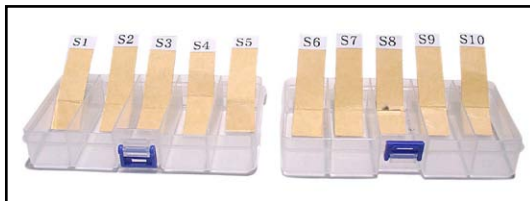
Keyboard PCB: M914-KYC1



## DISASSEMBLY

### ■ CAUTION

- The photos show a prototype. The appearance of the instrument, such as color, may differ from the actual model.
- To avoid damages to the instrument and the floor, lay the instrument on a mattress or blanket before starting disassembling.
- There are several kinds of screws. Be sure to use the correct type of screws when reassembling. It is advisable to sort the screws as shown below after removing them.



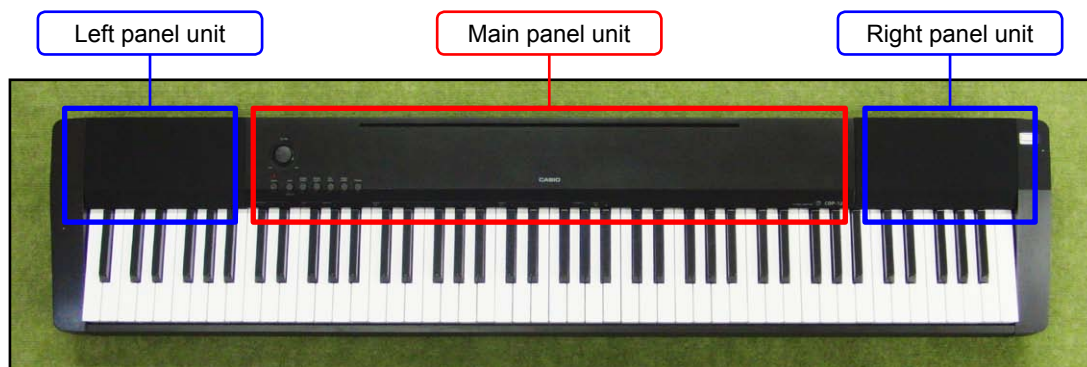
- If a screw cap is attached to a screw, be sure to reattach the screw cap when reassembling.

### ■ BEFORE STARTING REPAIR OR SERVICING

- Remove the AC adaptor, AC cord or batteries.
- Remove accessories such as the music stand.

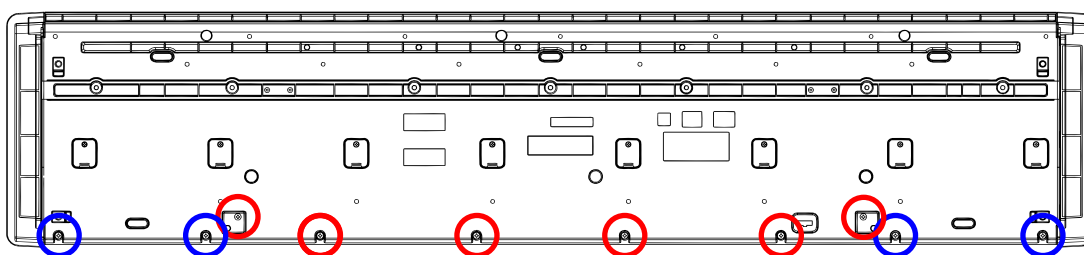
## ■ DISASSEMBLY

### A. REMOVE THE PANEL UNITS



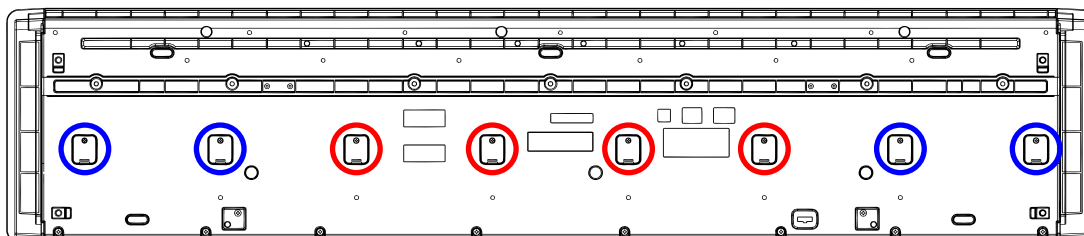
A-1. Undo 10 or six screws on the bottom surface of the main unit.

**NOTE:** To remove only the main panel unit, undo six screws indicated with red circles in the illustration below.



A-2. Undo eight or four screws and then remove eight or four LOWER-COVERS.

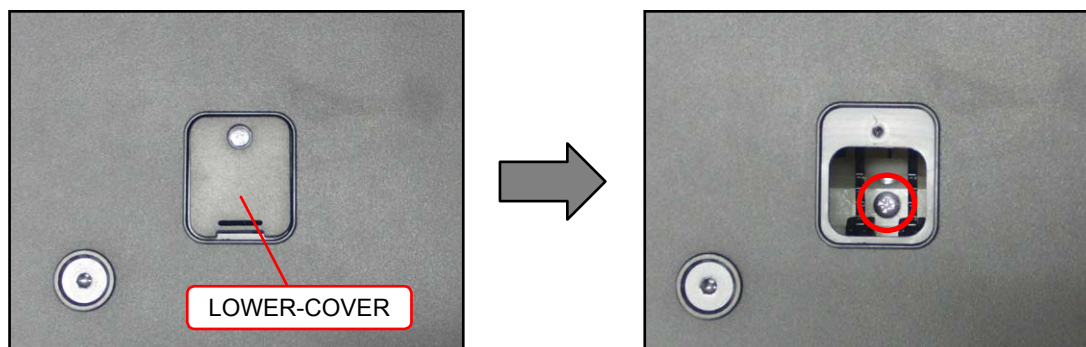
**NOTE:** To remove only the main panel unit, undo four screws and remove the four LOWER-COVERS indicated with red circles in the illustration below.



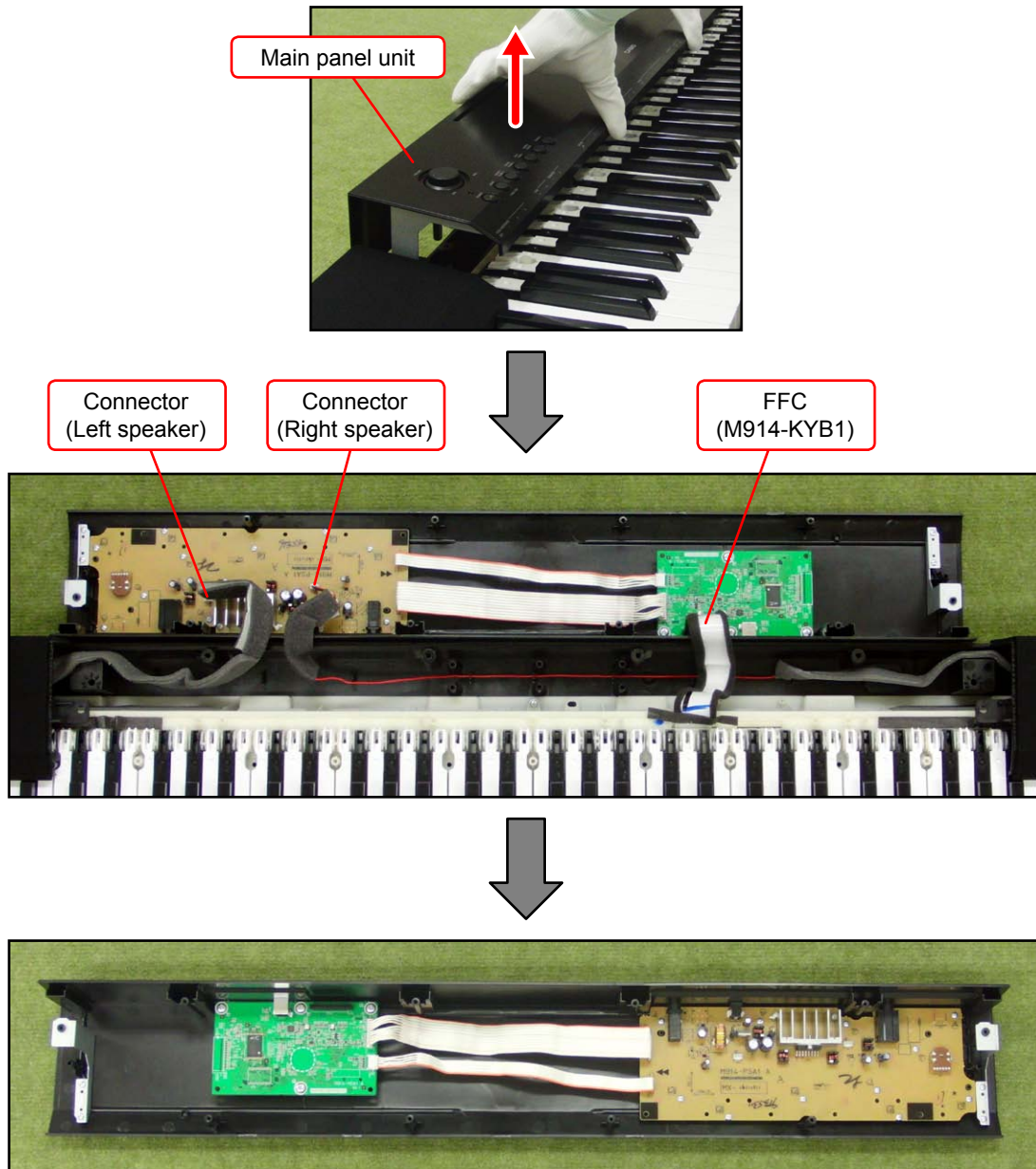
A-3. You will see a screw inside when you remove an LOWER-COVER. Undo and remove the screw through each opening (eight or four screws in total).

**NOTE:** Do not drop the screws inside the main unit.

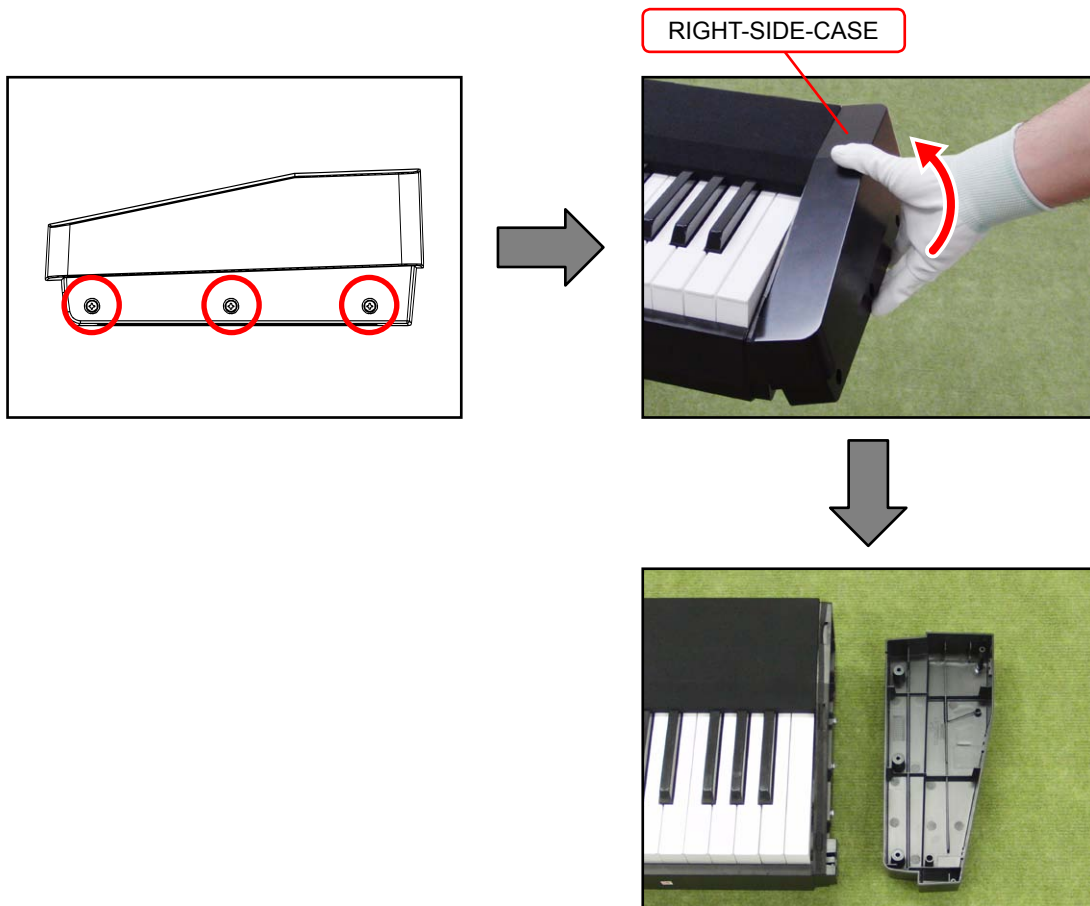
**NOTE:** Do not touch the hammer with the screwdriver while loosening the screws.



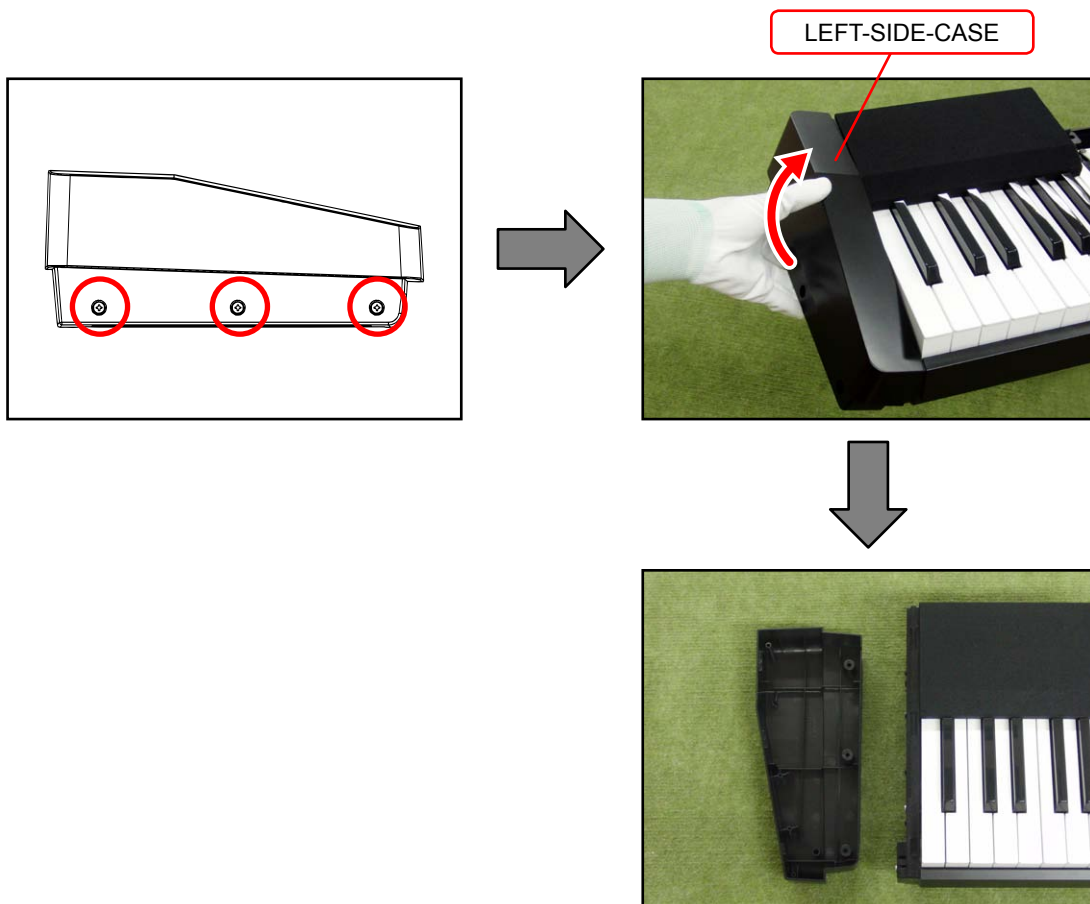
- A-4. Place the main unit with the keys facing up.
- A-5. Lift the main panel unit and turn it over.  
**NOTE:** The main panel unit is connected to the lower case unit with the connectors and FFC.  
 Use caution when turn over the main panel unit.
- A-6. Release the connector lock and remove the FFC.
- A-7. Remove two connectors and then remove the main panel unit.



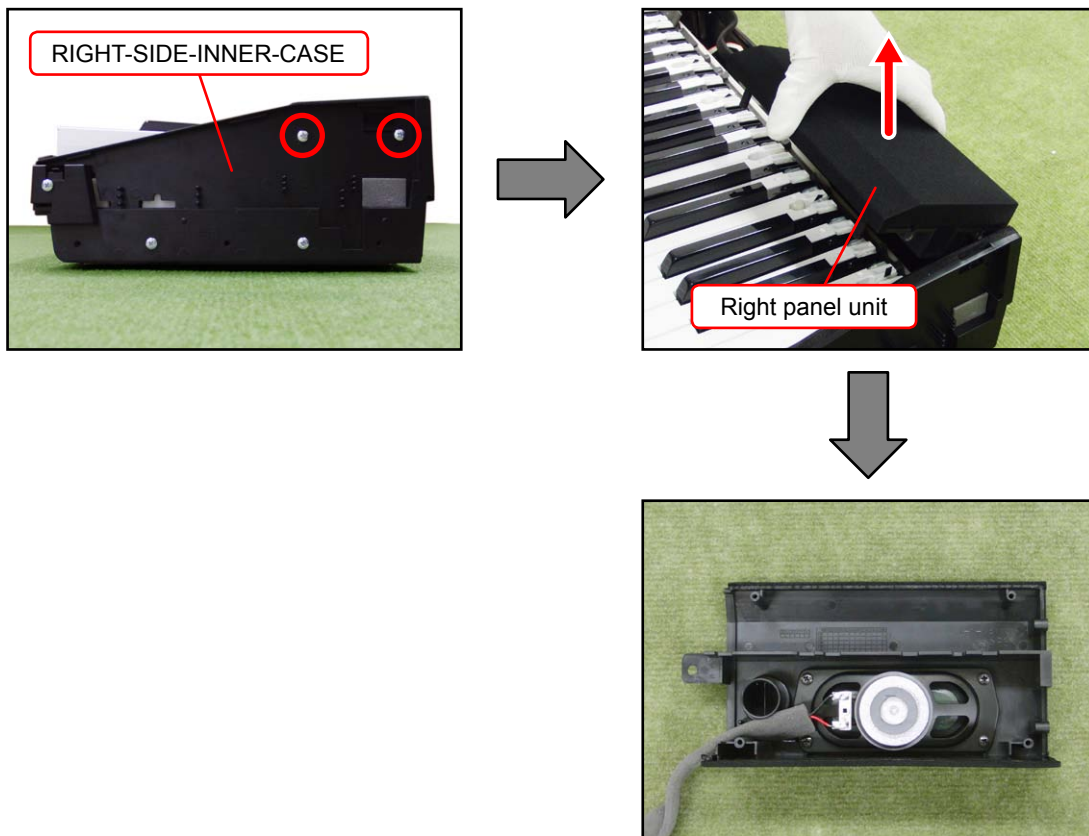
A-8. Undo three screws on the RIGHT-SIDE-CASE and then remove the RIGHT-SIDE-CASE.



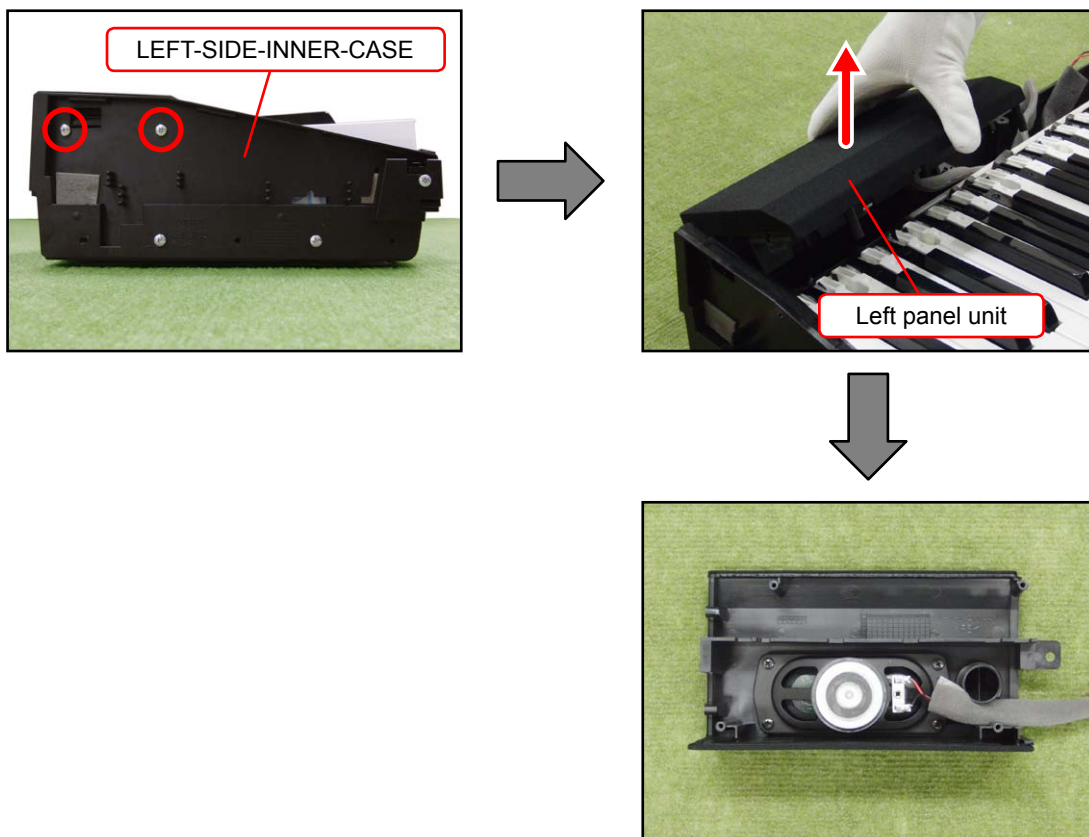
A-9. Undo three screws on the LEFT-SIDE-CASE and then remove the LEFT-SIDE-CASE.



A-10. Undo two screws on the RIGHT-SIDE-INNER-CASE and then remove the right panel unit.



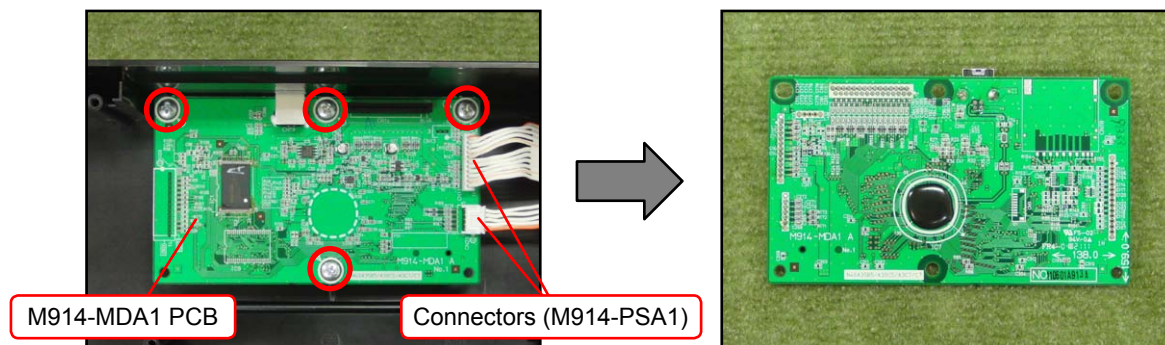
A-11. Undo two screws on the LEFT-SIDE-INNER-CASE and then remove the left panel unit.



## B. REMOVE THE M914-MDA1 PCB (MAIN PCB)

B-1. Remove two connectors.

B-2. Undo four screws and then remove the M914-MDA1 PCB.

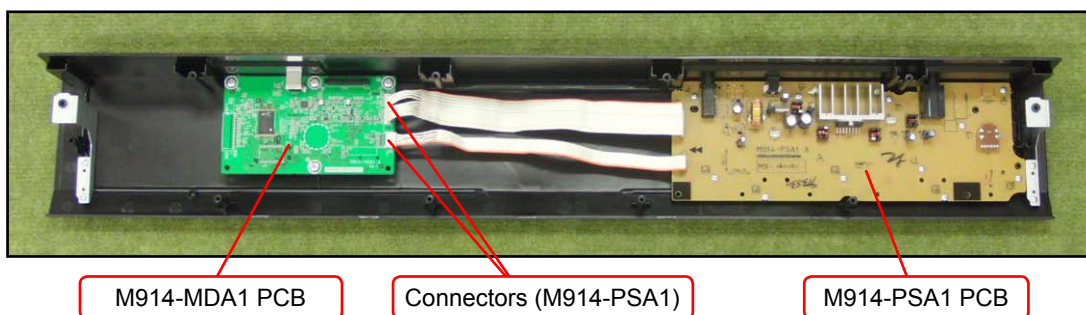


## C. REMOVE THE M914-PSA1 PCB (POWER AMP PCB)

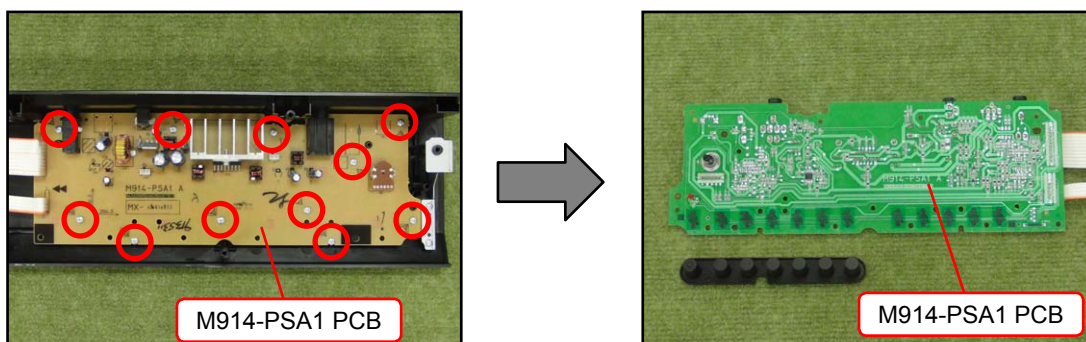
C-1. Remove the ROTARY-KNOB



C-2. Remove two connectors from the M914-MDA1 PCB.



C-3. Undo 11 screws and then remove the M914-PSA1 PCB and rubber key.



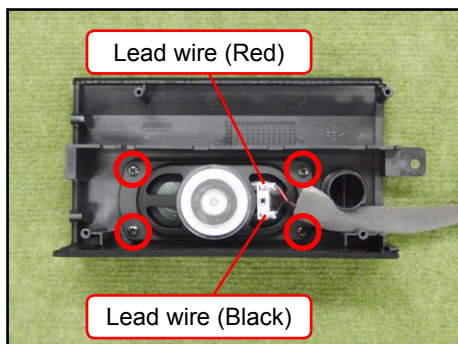


## D. REMOVE THE SPEAKER

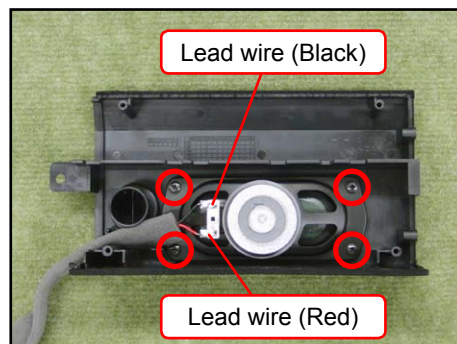
D-1. Unsolder two lead wires.

D-2. Undo four screws and then remove the SPEAKER.

<Left speaker>

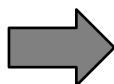
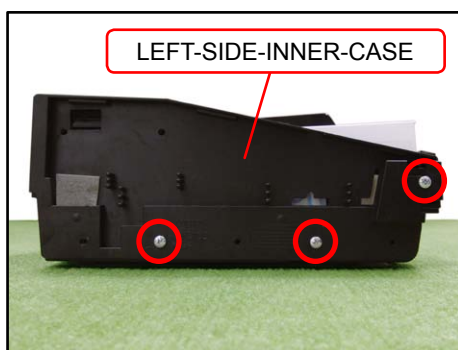


<Right speaker>

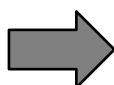
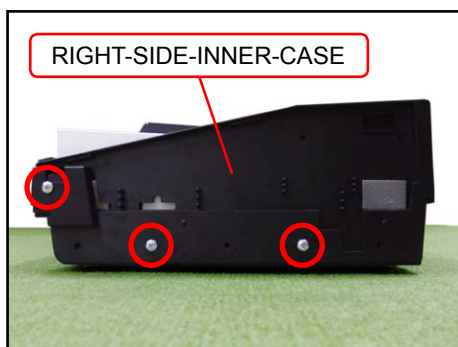


## E. REMOVE THE KY-ASSY

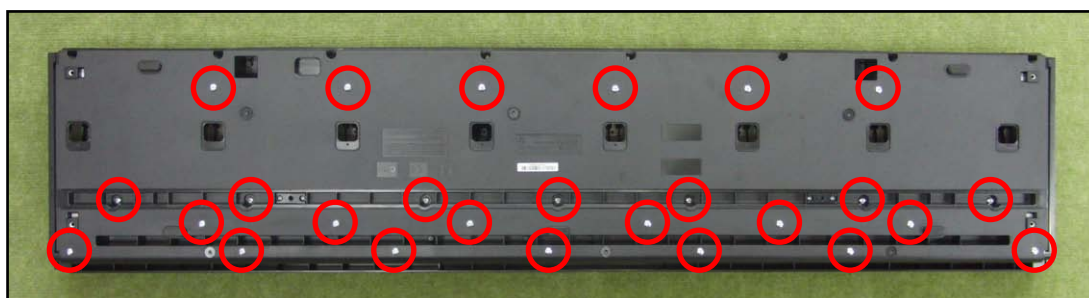
E-1. Undo three screws and then remove the LEFT-SIDE-INNER-CASE.



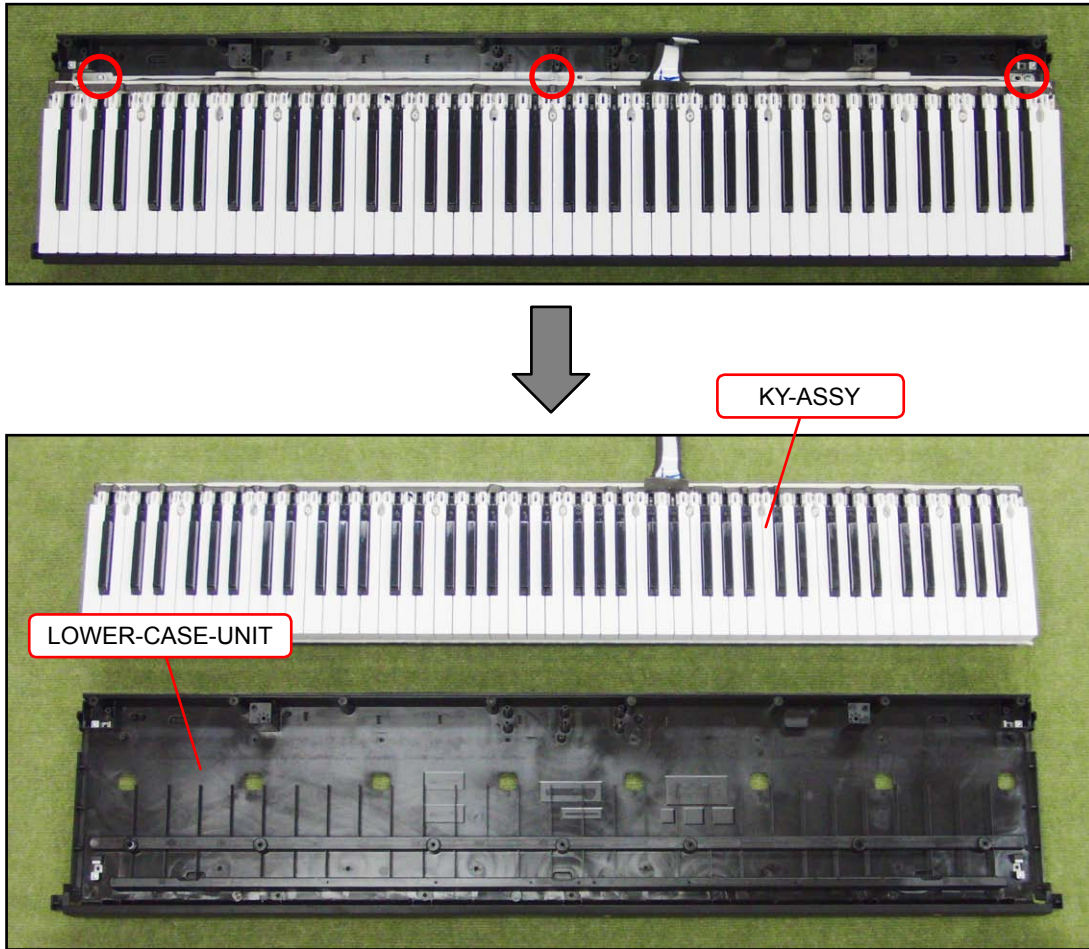
E-2. Undo three screws and then remove the RIGHT-SIDE-INNER-CASE.



E-3. Undo 26 screws.



E-4. Undo three screws and then remove the KY-ASSY.



## ■ DISASSEMBLY OF THE KY-ASSY

### A. REMOVE THE KEYS

#### <Removing the keys>

- To remove the keys, you will need two of the tools described below.
- Before removing a black key, you must first remove both white keys on either side of the black key.
- White keys may be removed with the same procedures as removing black keys.

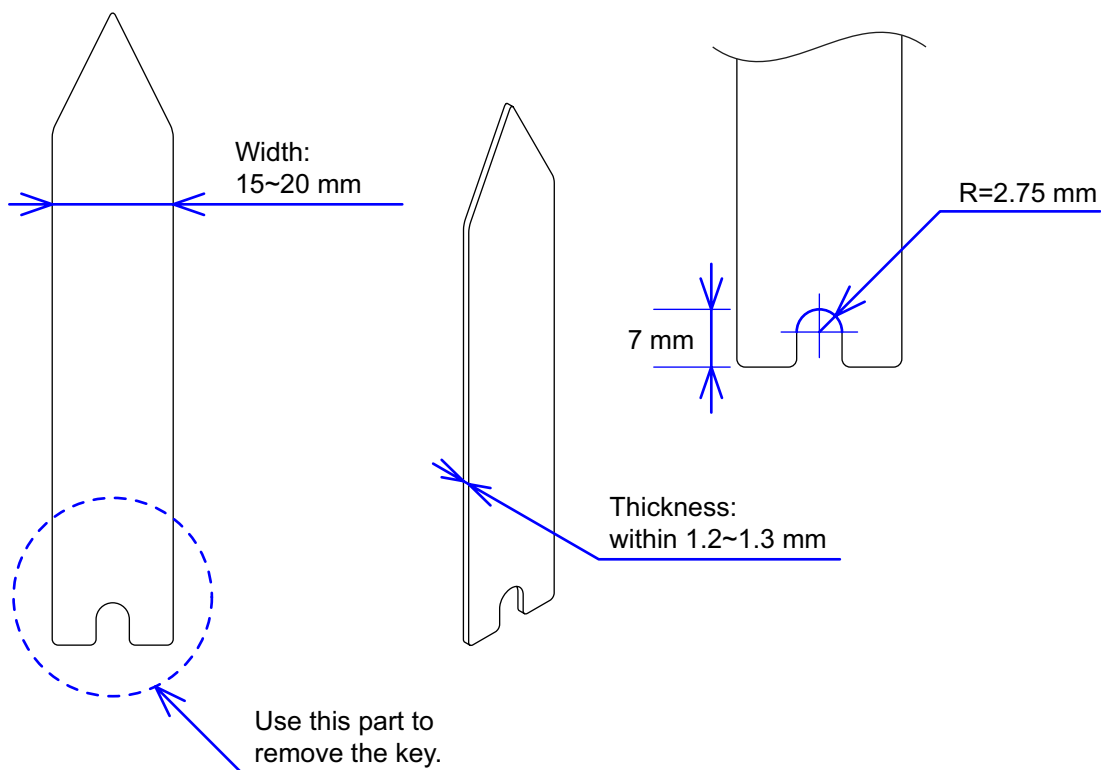
#### <Tool>

The tool used in the photos in this section was converted from a gardening ID tag. The size and shape of an ID tag accord to the dimensions below.

#### <Note on shaping an ID tag>

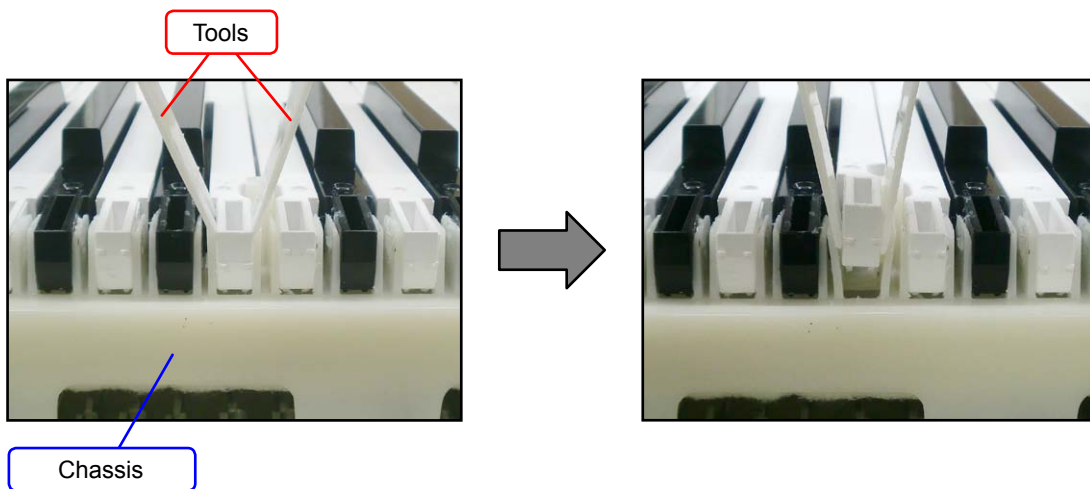
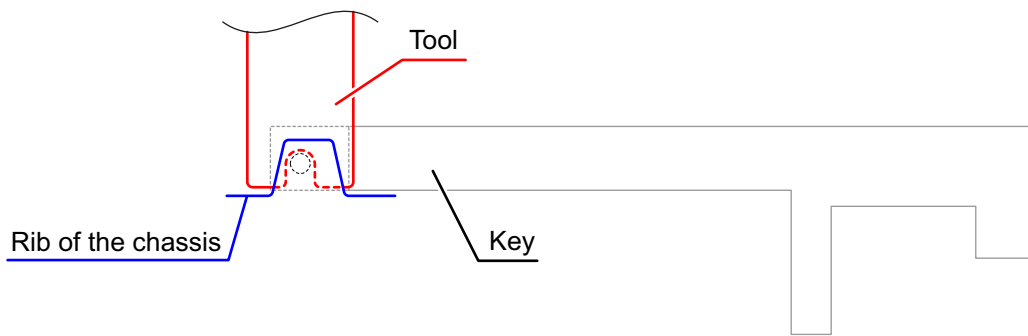
The thickness of the tool must be within 1.2~1.3 mm. If the tool is too thin, removing keys become difficult. If the tool is too thick, it may damage the rib of the chassis.

#### <Tool dimensions>



- A-1. Insert the two tools between the rib of the chassis and a key.
- A-2. When the tools are inserted to a certain depth, the key begins to be lifted and can then be removed.

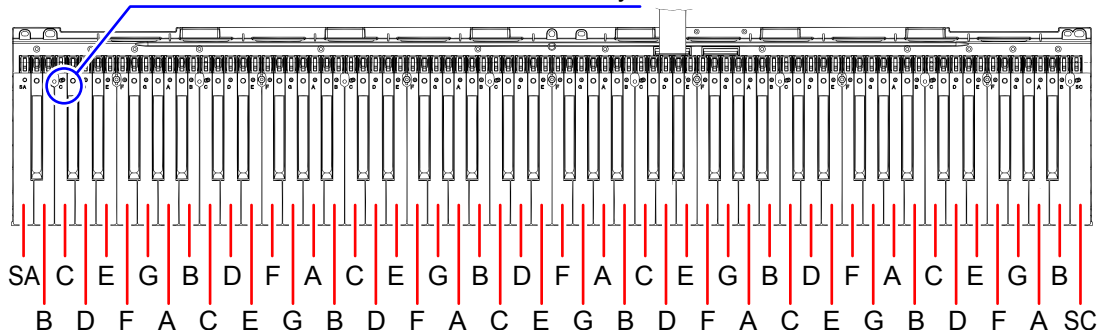
<Cross-section image>



### <Installing the keys>

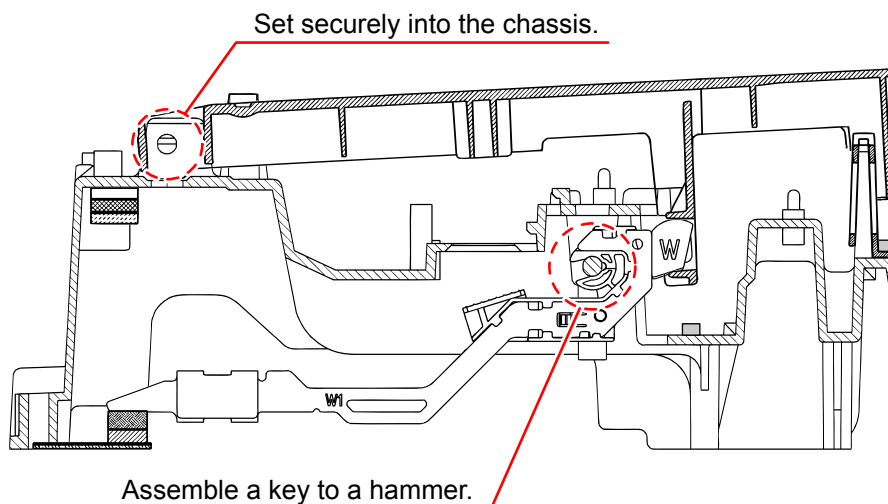
- Refer to the illustration below for the location of each white key.
- Be sure to install each key at its designated location.
- All black keys are the same. A black key may be installed at any correct black-key location.

A code is indicated at the foot of each key.



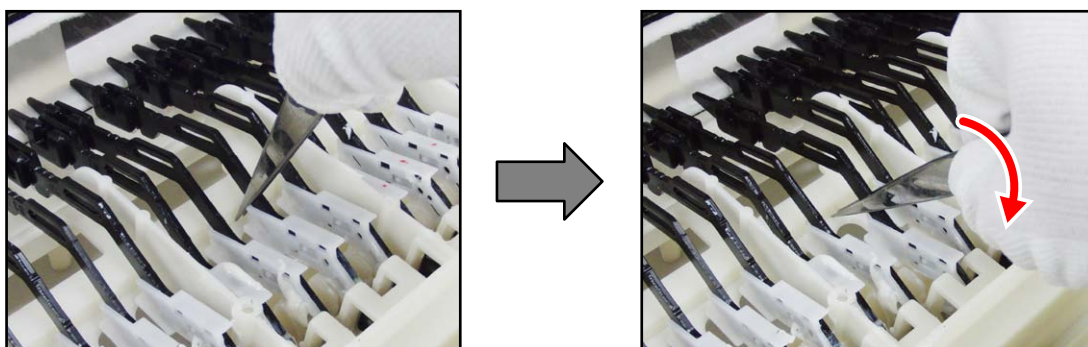
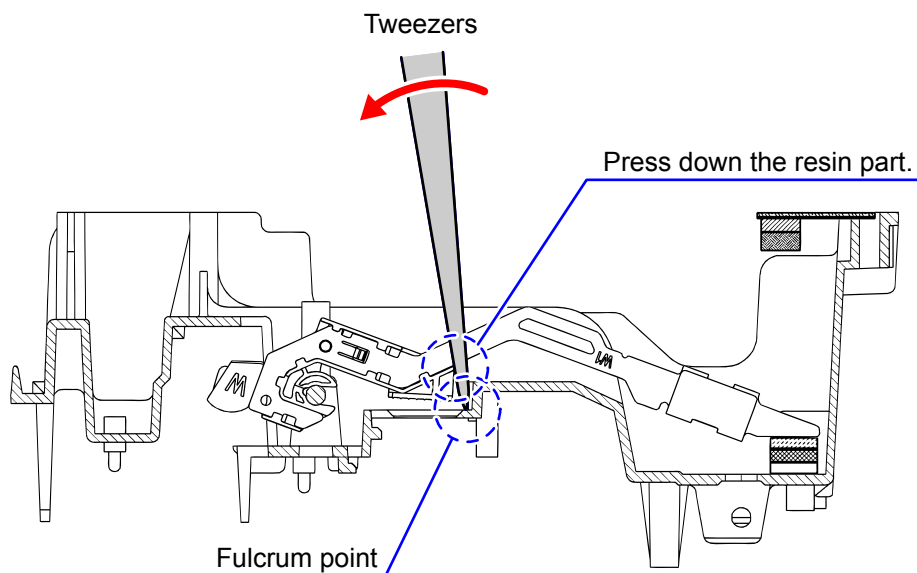
Install a black key before installing the white keys on either of its sides. Follow the same procedures below to install a black or white key.

- (1) Assemble a key to a hammer.
- (2) Press the protrusion of the chassis firmly into the keyhole.
- (3) Press the key to see if it moves properly.



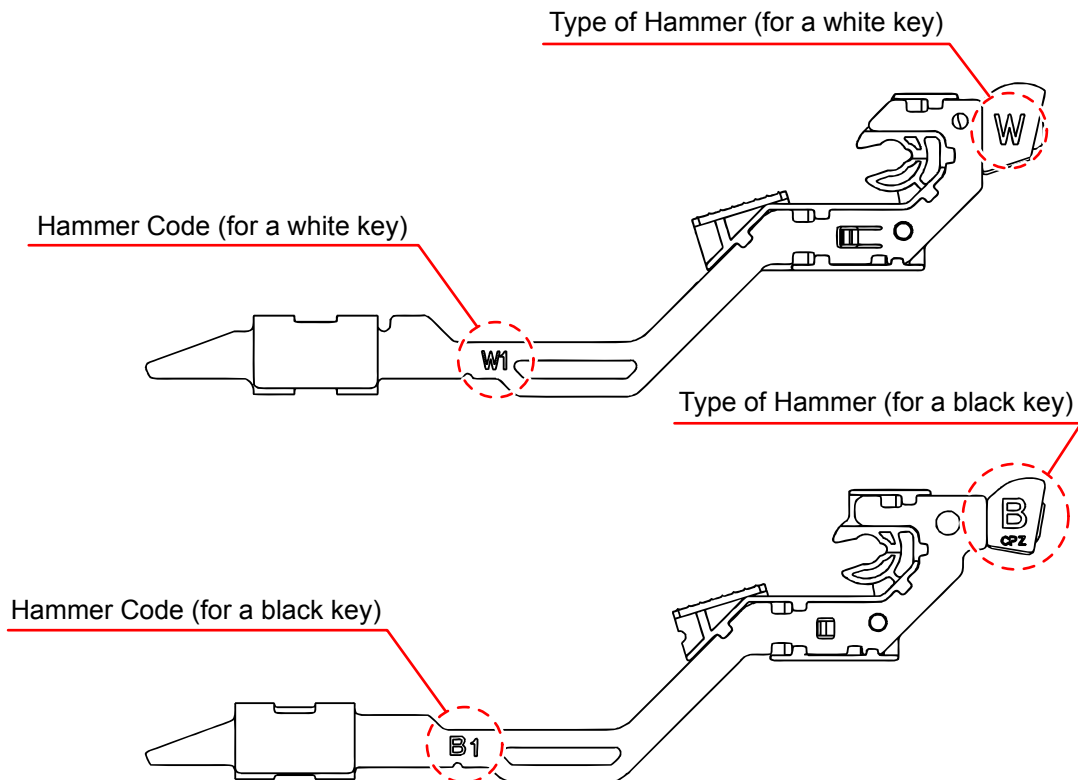
## B. REMOVE THE HAMMERS

- B-1. Place the chassis upside down so that the hammers are visible.
- B-2. Press the chassis with the tip of tweezers.
- B-3. While catching a hammer with tweezers, set the tweezers against the resin part of the chassis.
- B-4. Using the chassis-tweezer contact as a fulcrum point, press down against the resin part in the direction of the red arrow in the illustration below, and then disengage the hammer.



**<Kinds of hammers>**

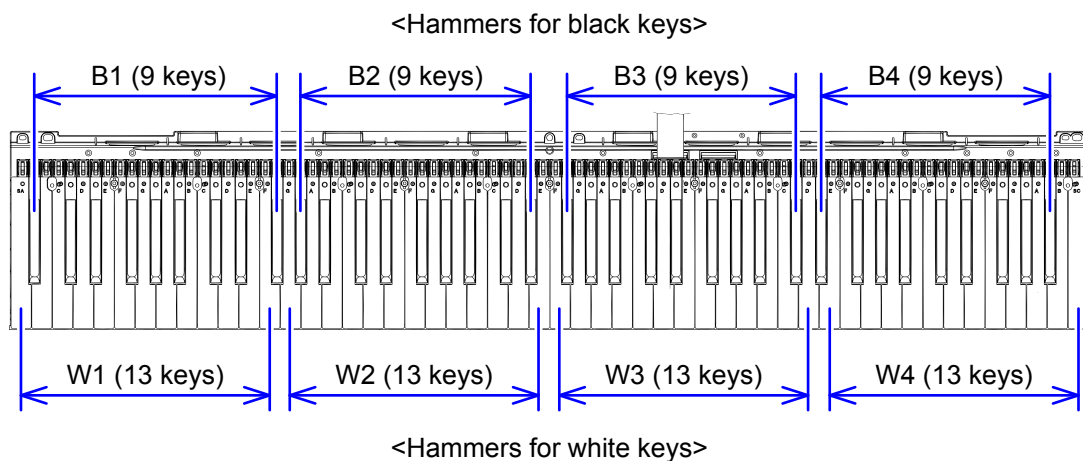
There are several kinds of hammers. The type of a hammer may be identified by the code engraved on it.



Type of Hammer: “W” for a white key, “B” for a black key.  
 Hammer Code: The hammers for white keys are coded W1, W2, W3, and W4.  
 The hammers for black keys are coded B1, B2, B3, and W4.

**<Location to install the hammer>**

A hammer must be installed at the correct location according to its type. The combination of hammers and keys are shown below.



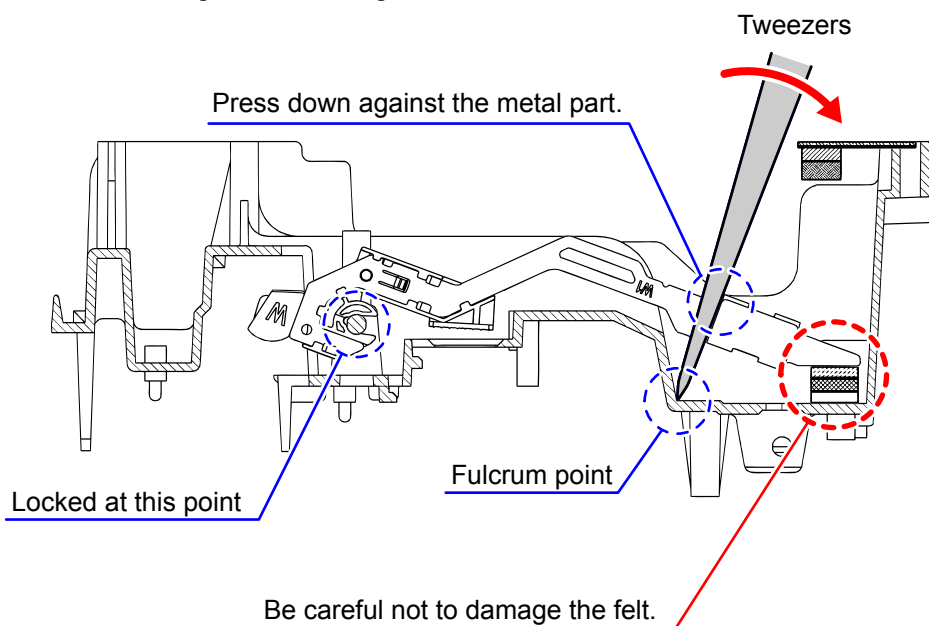
### <Installing the hammers>

Be sure to install each hammer at its designated location. If a hammer does not move smoothly, check if it is installed at the correct location.

Follow the same procedures shown below to install a hammer for both black and white keys.

- (1) Use the tweezers to set a hammer at its correct location.
- (2) Press the chassis with the tip of tweezers.
- (3) Using the chassis-tweezers contact as a fulcrum point, press down the metal part of the hammer in the direction of the red arrow in the illustration below, and then install the hammer.

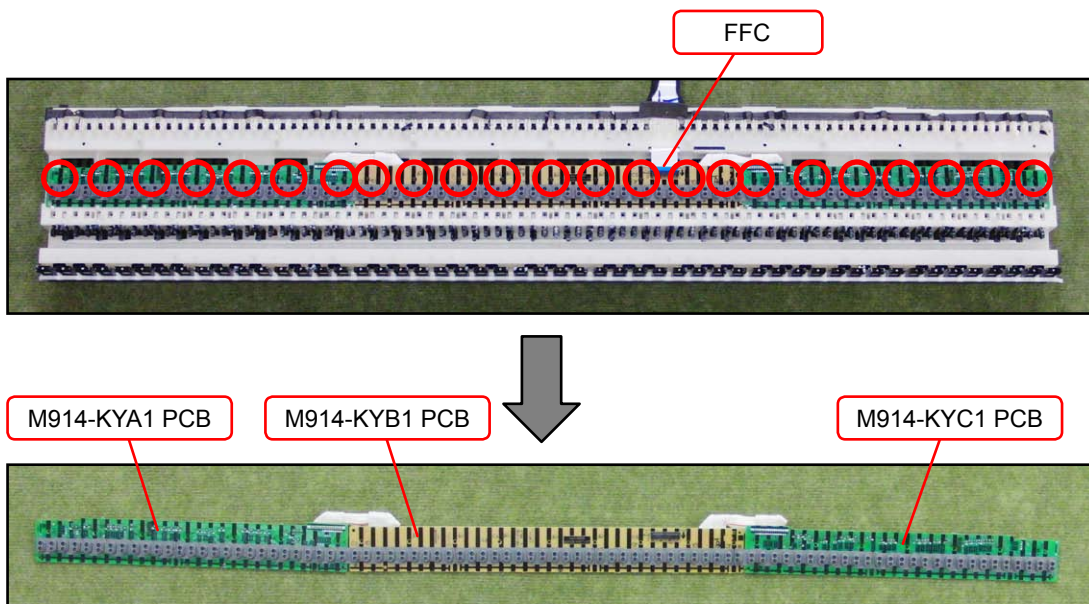
**NOTE:** When installing, do not damage the felt.



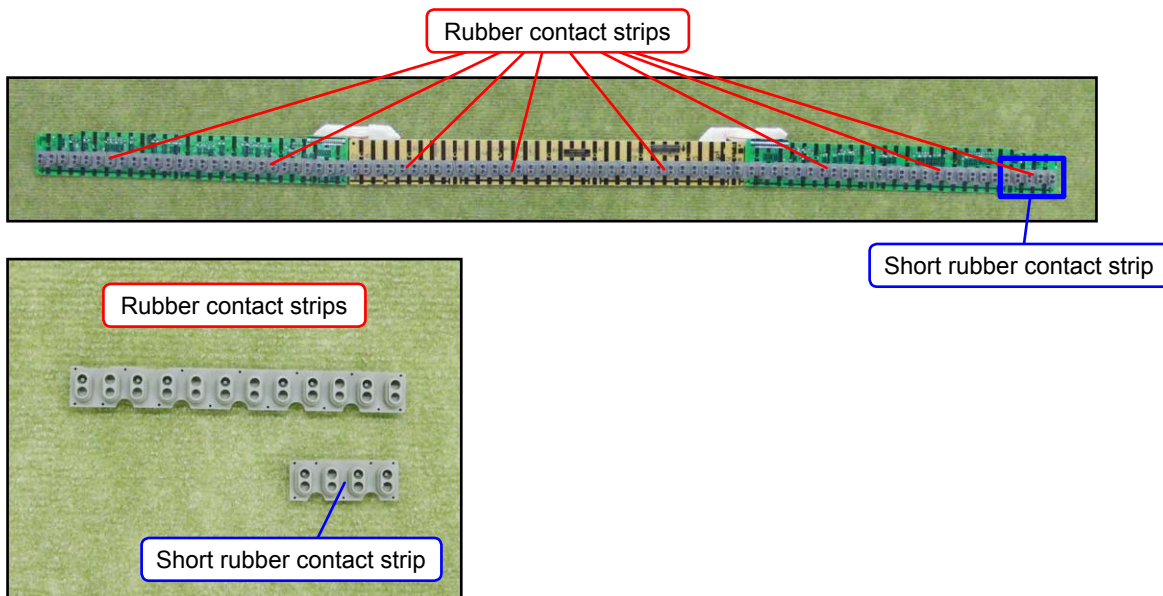


### C. REMOVE THE M914-KYA1/KYB1/KYC1 PCBs (KEYBOARD PCB)

- C-1. Release the connector lock and remove the FFC.
- C-2. Remove 23 screws and then remove the M914-KYA1/KYB1/KYC1 PCBs.



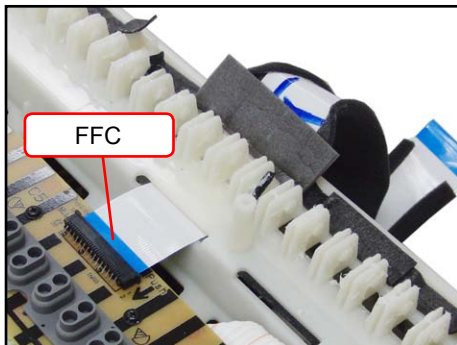
- C-3. Remove eight rubber contact strips.
- NOTE:** One rubber contact strip is shorter than the others.



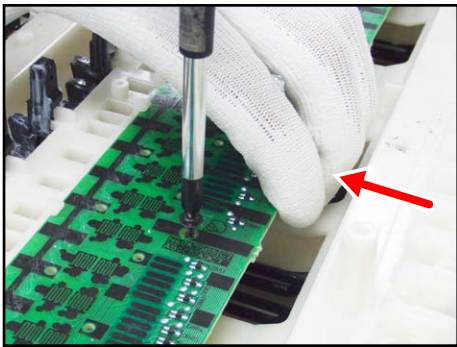
### <Installing the keyboard PCB (M914-KYA1/KYB1/KYC1)>

- (1) Connect the FFC to the M914-KYB1 PCB and lock the connector.

**NOTE:** Insert it firmly and lock up.



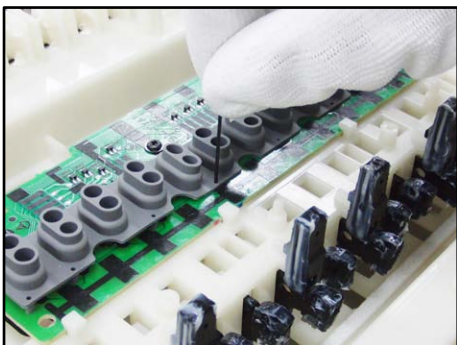
- (2) Secure the M914-KYA1/KYB1/KYC1 PCBs with 23 screws.  
Press the PCBs lightly in the direction of the red arrow in the illustration below while tightening a screw.



- (3) Install eight rubber contact strips.

**NOTE:** Be sure to install the short rubber contact strip at the correct location.

**NOTE:** Lightly insert the tip of a rubber contact strip into the PCB first, and then, press it in using the end of a paper clip. Do not press the rubber contact strip forcefully to avoid damaging the rubber contact strip.



## DIAGNOSTIC PROGRAM

### ■ PREPARATION

- (1) Connect the AC adaptor.
- (2) Connect the pedal (SP-3 or SP-20) to the DAMPER PEDAL jack.  
**NOTE:** SP-3 is the pedal unit that comes with CDP-120. SP-20 pedal is sold separately.  
**NOTE:** "PEDAL CHECK" cannot be performed unless the pedal is connected.
- (3) Turn the main volume to the maximum.
- (4) Have a PC and a USB cable ready.

**NOTE:** "USB CHECK" cannot be performed without a PC and a USB cable.

Operating System:   Windows® XP (SP2 or later) \*1  
                               Windows Vista® \*2  
                               Windows 7® \*3  
                               Mac OS® X (10.3.9, 10.4.11, 10.5.8 or later, 10.6.6 or later)

\*1: Windows XP Home Edition/Windows XP Professional (32 bit)

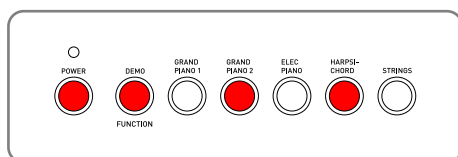
\*2: Windows Vista (32 bit)

\*3: Windows 7 (32 bit, 64 bit)

### ■ HOW TO START THE DIAGNOSTIC PROGRAM

- (1) Hold down the "FUNCTION", "GRAND PIANO 2" and "HARPSICHORD" buttons at the same time, to turn the power ON.

**NOTE:** Be sure to turn OFF the power when the test is finished.



- (2) Release the "FUNCTION", "GRAND PIANO 2" and "HARPSICHORD" buttons
- (3) The diagnostic program starts and then CDP-120 enters in the root mode where it waits for test item selection.

### ■ TEST ITEMS

In root mode, you can perform arbitrary test by pressing a desired button that corresponds to the test item.

Test Items	Buttons	Note
A. BUTTON CHECK	FUNCTION	
B. ROM VERSION CHECK	HARPSICHORD	
C. ROM CHECKSUM TEST	GRAND PIANO 2	
D. PEDAL CHECK	ELEC PIANO	Pedal (SP-3 or SP-20)
E. USB CHECK		PC, USB cable

## ■ TEST PROCEDURES

### A. BUTTON CHECK

---

- A-1. Press the “FUNCTION” button to perform the “BUTTON CHECK”.
- A-2. Press the button in the order indicated in the illustration.

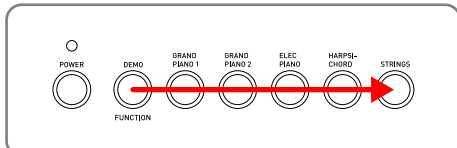
**NOTE:** You cannot cancel this check procedure mid-way.

**<If the result passes>**

The confirmation chord sounds.

**<If the result fails>**

If there is a button failure or the buttons are pressed in a wrong sequence, an error tone sounds.



- A-3. When the “STRINGS” button is pressed at the end, press the “STRINGS” button again to return to the root mode.

### B. ROM VERSION CHECK

---

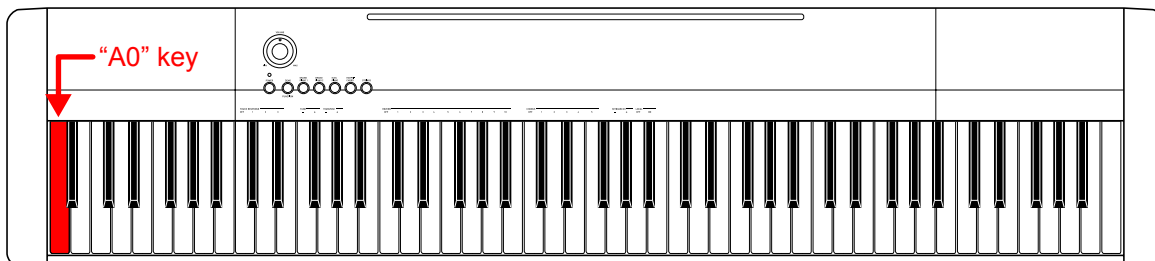
- B-1. Press the “HARPSICHORD” button to perform the “ROM VERSION CHECK”.
- B-2. Press the “A0” key.

**<If the result passes>**

The confirmation chord sounds.

**<If the result fails>**

The error tone sounds.



- B-3. Press the “STRINGS” button to return to the root mode.

### C. ROM CHECKSUM TEST

---

- C-1. Press the “GRAND PIANO 2” button to select the “ROM CHECKSUM TEST”.
- C-2. Press the “GRAND PIANO 2” button to perform the check.

**<If the result passes>**

The confirmation chord sounds.

**<If the result fails>**

The error tone sounds.

- C-3. Press the “STRINGS” button to return to the root mode.

## D. PEDAL CHECK

---

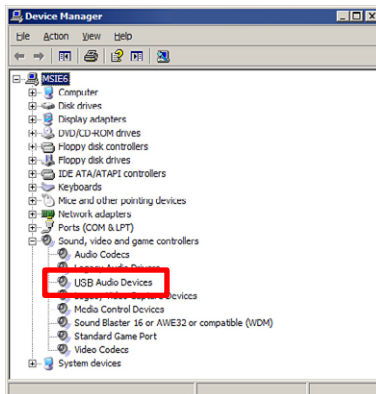
- D-1. Press the “ELEC PIANO” button to select the “PEDAL CHECK”.
- D-2. Press the pedal.  
**<If the result passes>**  
The confirmation chord sounds.  
**<If the result fails>**  
The error tone sounds.
- D-3. Press the “STRINGS” button to return to the root mode.

## E. USB CHECK

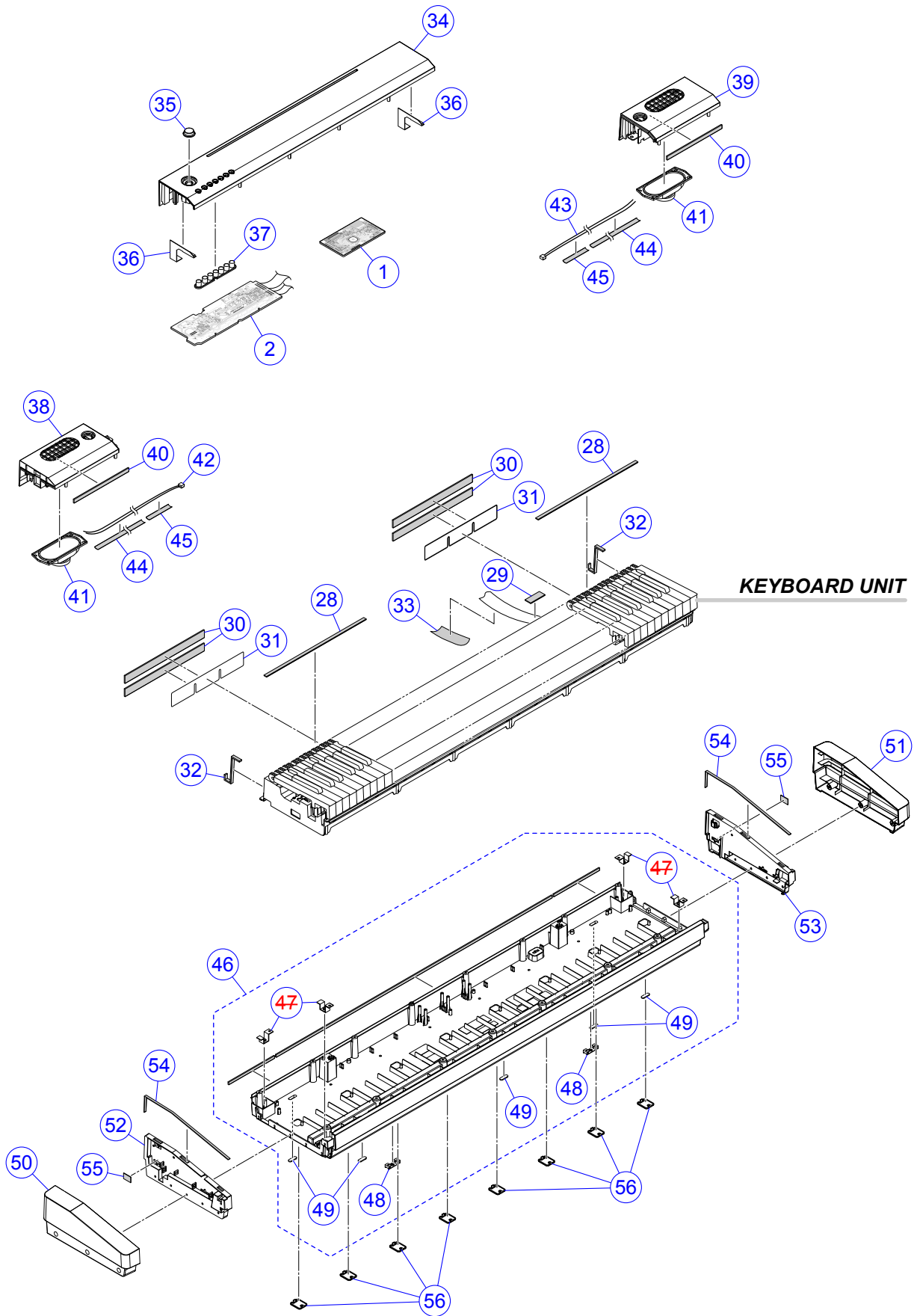
---

**NOTE:** The following procedures are for a PC with Windows XP.

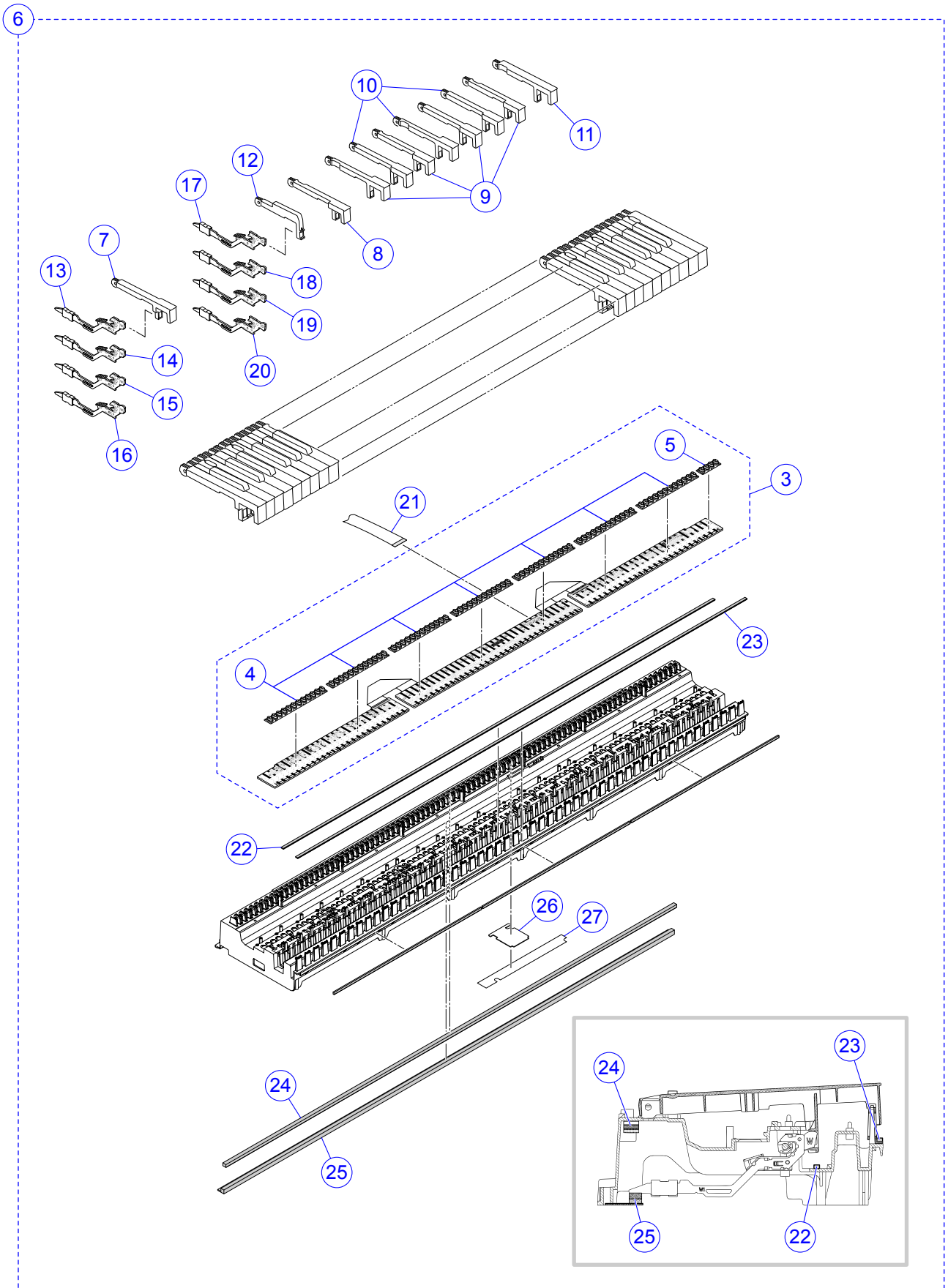
- E-1. Connect the main unit to the PC with a USB cable.
- E-2. Open the windows “Device Manager”, and then make sure “USB Audio Devices” is listed under “Sound, video and game controllers”.
- E-3. Disconnect the USB cable.
- E-4. Verify “USB Audio Devices” is not listed under “Sound, video and game controllers”.



# EXPLODED VIEW



KEYBOARD UNIT



# PARTS LIST

## CDP-120

Notes:

1. Prices and specifications are subject to change without prior notice.
2. Refer to the latest “Parts Price Code” at “PARTS FINDER” on the Casio Service WEB site (<https://www.servicecasio.com>).
3. As for spare parts order and supply, refer to the “GUIDEBOOK for Spare parts Supply”, published separately.
4. The numbers in item column correspond to the same numbers in drawing.



- 1: CDP-120\_BLACK\_DI  
 2: CDP-120\_BLACK\_EU  
 3: CDP-120\_BLACK\_UK  
 4: CDP-120\_BLACK\_US

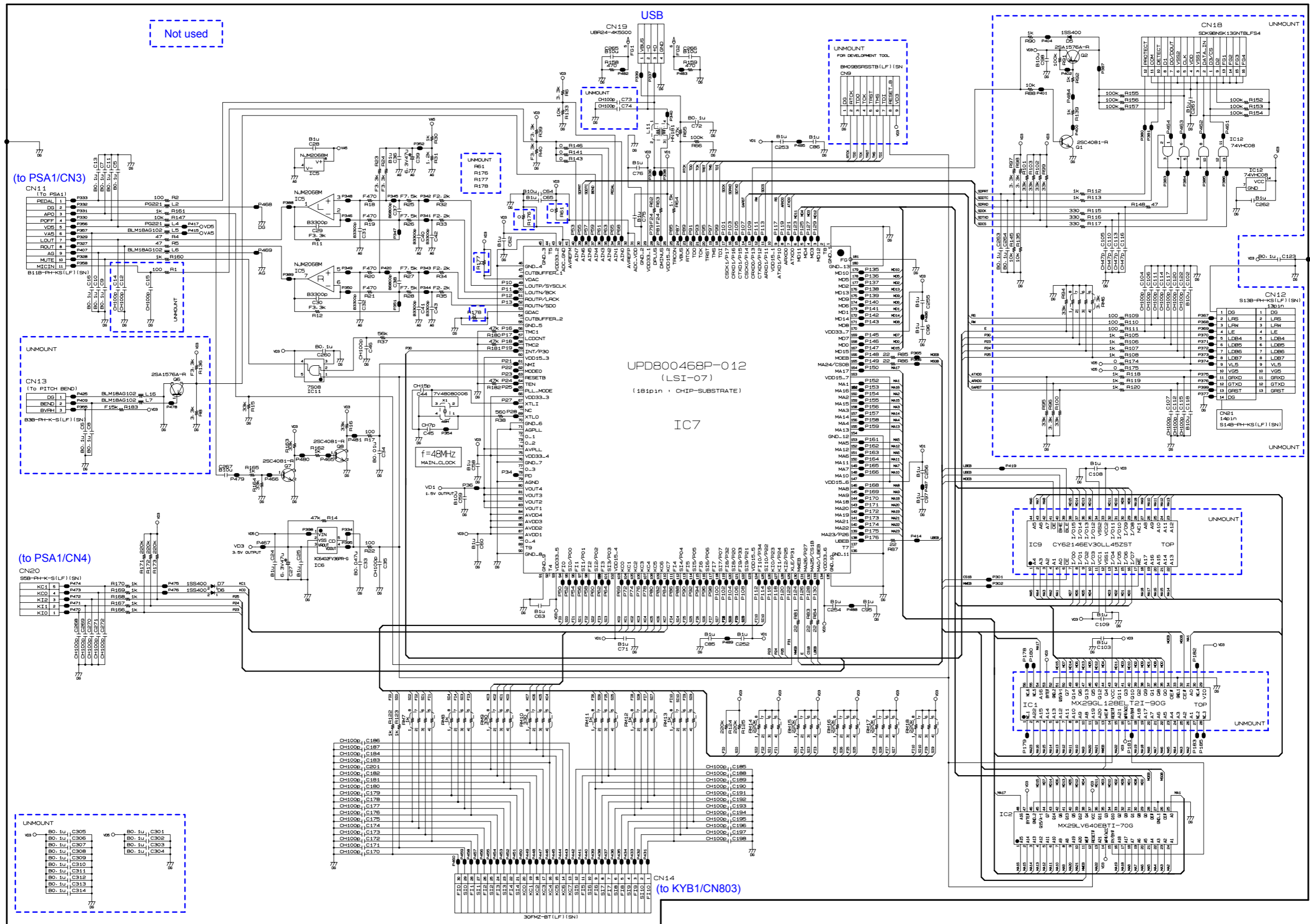
N	Item	Code No.	Parts Name	Specification	Q'ty				Price Code	R	Remarks
					1	2	3	4			
<b>MAIN PCB</b>											
N	1	10399371	PCB UNIT/MAIN	TK-RJM511112*001	1	1	1	1		A	MDA1
	CN19	10236624	CONNECTOR/USB	UBR24-4K5G00	1	1	1	1		C	
	D6,D7	10009218	DIODE	1SS400TE61	2	2	2	2		X	
	IC5	10211950	IC	NJM2068M-D(Te1)	1	1	1	1		X	
	IC11	10137770	IC	TC7S08FU(Te85L.F)	1	1	1	1		X	
N	IC6	10398240	IC	XC6402FV36PR-G	1	1	1	1		X	
N	IC2	10396325	LSI/MEMORY	MX29LV640EBTI-70G	1	1	1	1		C	
	L11	10193074	COIL	DLW21HN181SQ2L	1	1	1	1		X	
	Q7,Q8	69300298	TRANSISTOR	2SC4081T106R	2	2	2	2		X	
	X1	10375016	RESONATOR	7V48080006	1	1	1	1		X	
<b>POWER AMP PCB</b>											
N	2	10399370	PCB UNIT/PSA1	TK-RJM511113*001	1	1	1	1		B	PSA1
N	D1,D2	10260786	DIODE	1N5822-C144	2	2	2	2		X	
	IC3	10375029	IC	LA5756-MDB-E	1	1	1	1		X	
	IC2	10306512	IC	TDA7297	1	1	1	1		X	
	J5	10206815	JACK/PEDAL	JY-6314*01-030	1	1	1	1		B	
	J2	10305218	JACK/PHONE	JY-6316B*01-070	1	1	1	1		B	
	J3	10334294	JACK/DC	KM02022ABMP	1	1	1	1		A	
	L2	10231919	COIL	RB53-856396NP	1	1	1	1		X	
	L3,L4,L6	10231920	COIL	RB53-856397NP	3	3	3	3		X	
	L5	10232457	COIL	RII7-860400NP	1	1	1	1		X	
N	VR1	10407265	VARIABLE RESISTOR	F164KPD-1N-CASIO-4	1	1	1	1		B	Main volume
	D3,D4	23901820	DIODE	1SS355TE-17	2	2	2	2		X	
	IC1	10306415	IC	BH3547F-E2	1	1	1	1		X	
	Q4	69409403	TRANSISTOR	2SA1576AT106R	1	1	1	1		X	
	Q1-Q3	69300298	TRANSISTOR	2SC4081T106R	3	3	3	3		X	
<b>KEYBOARD PCB</b>											
N	3	10399792	PCB UNIT/KY and RUBBER CONTACT	TK-RJM511215*001	1	1	1	1		C	KYA1/KYB1/KYC1
N	D801-D827	10398230	DIODE	DAN202UMTL	27	27	27	27		X	
N	D828-D861	10398230	DIODE	DAN202UMTL	34	34	34	34		X	
N	D862-D888	10398230	DIODE	DAN202UMTL	27	27	27	27		X	
	4	10195879	RUBBER CONTACT/AG	RJM502920-001V02	7	7	7	7		A	
	5	10195880	RUBBER CONTACT/GC	RJM502921-001V02	1	1	1	1		B	
<b>KEYBOARD UNIT</b>											
N	6	10399791	KEYBOARD UNIT	TK-RJM511279*001	1	1	1	1		C	
N	7	10363265	WHITE KEY/SA	RJM502795-003V05	1	1	1	1		X	
N	8	10398222	WHITE KEY/B	RJM502794-001V04	1	1	1	1		A	
N	9	10398223	WHITE KEY/CEGB	RJM502862-001V04	7	7	7	7		A	
N	10	10398225	WHITE KEY/DFA	RJM502863-001V04	7	7	7	7		A	
N	11	10363266	WHITE KEY/SC	RJM502796-003V05	1	1	1	1		X	
N	12	10398220	BLACK KEY	RJM502797-001V03	36	36	36	36		A	
	13	10341062	HAMMER UNIT/W1	TK-RJM509600*001	13	13	13	13		C	
	14	10341063	HAMMER UNIT/W2	TK-RJM509601*001	13	13	13	13		C	
	15	10341064	HAMMER UNIT/W3	TK-RJM509602*001	13	13	13	13		C	
	16	10341065	HAMMER UNIT/W4	TK-RJM509603*001	13	13	13	13		C	
	17	10341066	HAMMER UNIT/B1	TK-RJM509604*001	9	9	9	9		C	
	18	10341067	HAMMER UNIT/B2	TK-RJM509605*001	9	9	9	9		C	
	19	10341068	HAMMER UNIT/B3	TK-RJM509606*001	9	9	9	9		C	
	20	10341069	HAMMER UNIT/B4	TK-RJM509607*001	9	9	9	9		C	

- 1: CDP-120\_BLACK\_DI  
 2: CDP-120\_BLACK\_EU  
 3: CDP-120\_BLACK\_UK  
 4: CDP-120\_BLACK\_US

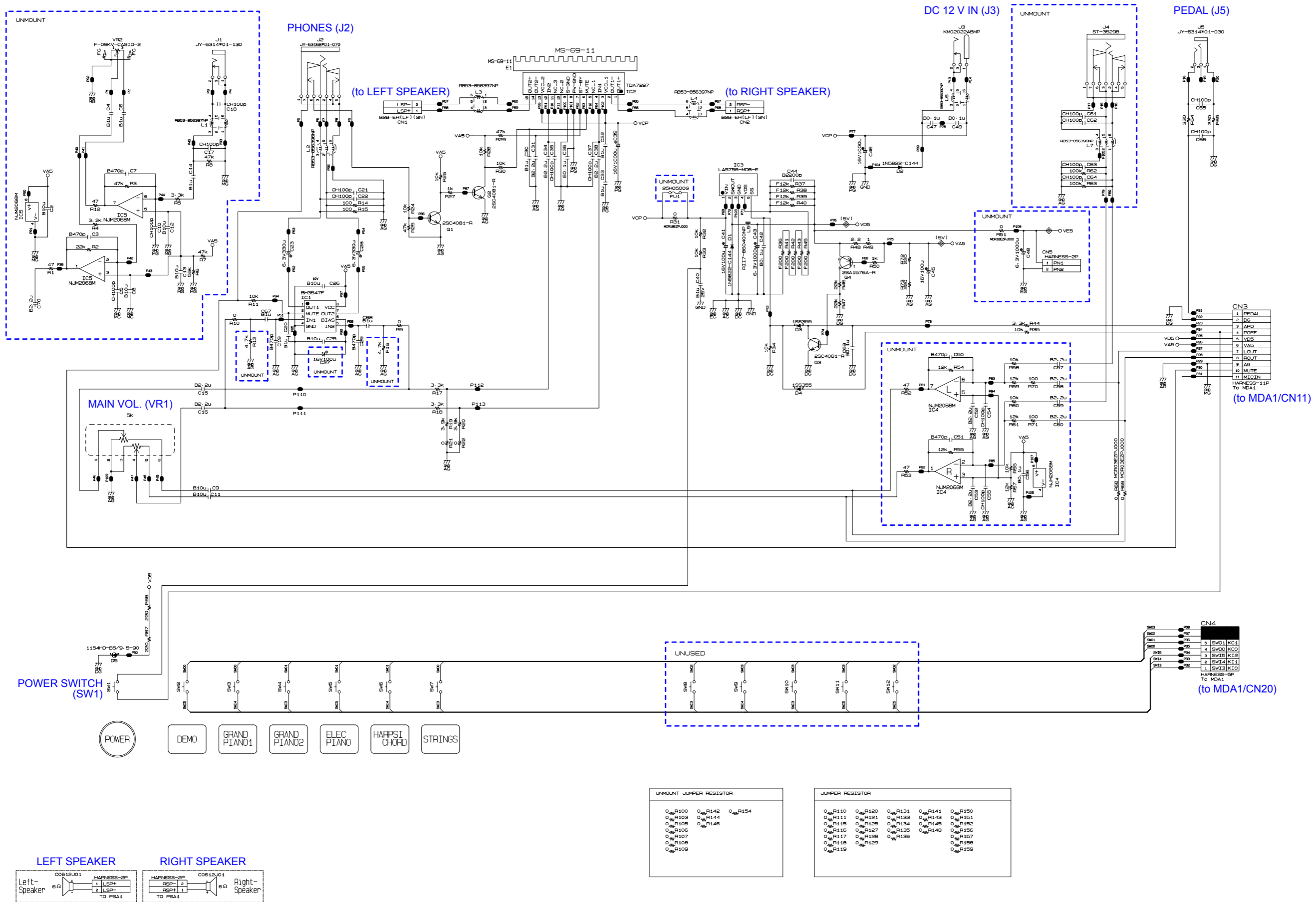
N	Item	Code No.	Parts Name	Specification	Q'ty				Price Code	R	Remarks
					1	2	3	4			
N	21	10336108	CABLE	UL2896-30-265-MACP	1	1	1	1		X	
N	22	10398226	FELT/LOWER LIMIT/BLACK KEY	RJM510067-002V02	1	1	1	1		X	
N	23	10398227	FELT/LOWER LIMIT/WHITE KEY	RJM503562-002V02	1	1	1	1		X	
N	24	10398219	FELT/UPPER LIMIT/HAMMER	RJM511203-001V01	1	1	1	1		X	
	25	10399793	FELT/LOWER LIMIT/HAMMER	TK-RJM507910*001	1	1	1	1		X	
	26	10388000	PLATE	RJM510952-001V01	1	1	1	1		X	
	27	10343387	FABRIC TAPE/ACP	RJM510100-001V01	1	1	1	1		X	
	28	10175757	PACKING/10X386	RJM504743-001V01	2	2	2	2		X	
	29	10128574	PACKING	RJM503241-001V01	1	1	1	1		X	
N	30	69307137	PACKING	M440857-1	4	4	4	4		X	
N	31	10397766	KEYBOARD SEALING	RJM511107-001V01	2	2	2	2		X	
	32	10175758	PACKING/10X100	RJM504744-001V01	2	2	2	2		X	
	33	69287160	SPONGE/50X180	M440961-1	1	1	1	1		X	
<b>PANEL UNIT</b>											
N	34	10398589	CASE/PANEL	RJM511090-001V01	1	1	1	1		X	
	35	10269765	KNOB/ROTARY	M341109-008V01	1	1	1	1		C	
N	36	10398202	BRACKET	RJM511073-001V01	2	2	2	2		X	
N	37	10398204	RUBBER BUTTON/A	RJM511075-001V01	1	1	1	1		X	
<b>SIDE PANEL UNIT</b>											
N	38	10398236	CASE SUB UNIT/PANEL/LEFT	RJM511005*001V01	1	1	1	1		X	
N	39	10398237	CASE SUB UNIT/PANEL/RIGHT	RJM511006*001V01	1	1	1	1		X	
	40	10130104	FABRIC TAPE/10X180	M440259-002V01	2	2	2	2		X	
	41	10284878	SPEAKER	C0612J01	2	2	2	2		X	
N	42	10164046	HARNESS	EH-2P-43-M420	1	1	1	1		X	
	43	10308814	HARNESS	EH-2P-85-M810	1	1	1	1		X	
	44	69320969	SPONGE/50X285	M441325-1	2	2	2	2		X	
N	45	10312787	SPONGE/50X115	RJM506431-002V01	2	2	2	2		X	
<b>MAIN CASE UNIT</b>											
	46	10399794	CASE UNIT/LOWER	TK-RJM510997*001	1	1	1	1		X	
	47	40201510	BRACKET	RJM505933-001V01	4	4	4	4		X	
N	48	10359076	BRACKET	RJM505932-001V02	2	2	2	2		X	
	49	10133655	RUBBER FOOT	RJM503180-001V01	5	5	5	5		X	
N	50	10398588	CASE/SIDE/LEFT	RJM510999-002V01	1	1	1	1		X	
N	51	10398197	CASE/SIDE/RIGHT	RJM511000-001V01	1	1	1	1		X	
N	52	10398216	CASE/SIDE/INNER/LEFT	RJM511001-001V01	1	1	1	1		X	
N	53	10398217	CASE/SIDE/INNER/RIGHT	RJM511002-001V01	1	1	1	1		X	
	54	10179177	FABRIC TAPE/6X310	RJM505229-001V01	2	2	2	2		X	
	55	69307162	PACKING	M440967-1	2	2	2	2		X	
	56	10337052	LOWER COVER	RJM509409-001V01	8	8	8	8		X	
<b>ACCESSORIES</b>											
	-	10342718	MUSIC STAND	RJM508666-001V04	1	1	1	1		C	
	-	10133504	FOOT PEDAL/SP3	TK-RJM503195*001	1	1	1	1		X	
	-	10392266	AC ADAPTOR	AD-A12150LW-F3	1	1	1	1		B	without AC CORD
	-	10361066	AC CORD	UC2LT-M006A	1			1		X	for US
	-	10361067	AC CORD	EC2LT-M002A	1	1				X	for EU
	-	10361068	AC CORD	KC2LT-M002A	1					X	for Korea
	-	10361069	AC CORD	AUC2LT-M002A	1					X	for Australia
	-	10361070	AC CORD	BC2LT-M002A			1			X	for UK

# SCHEMATIC DIAGRAMS

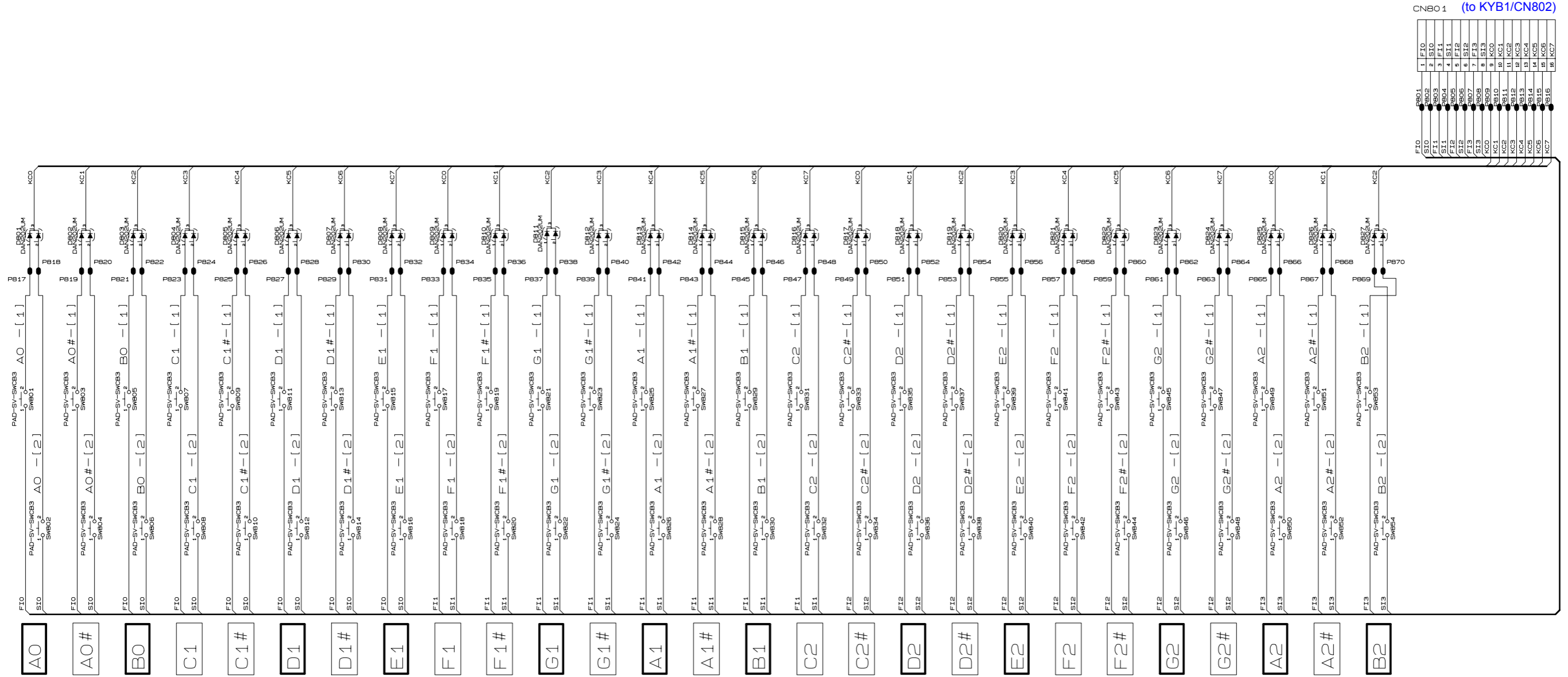
## Main PCB: M914-MDA1



Power Amp PCB: M914-PSA1



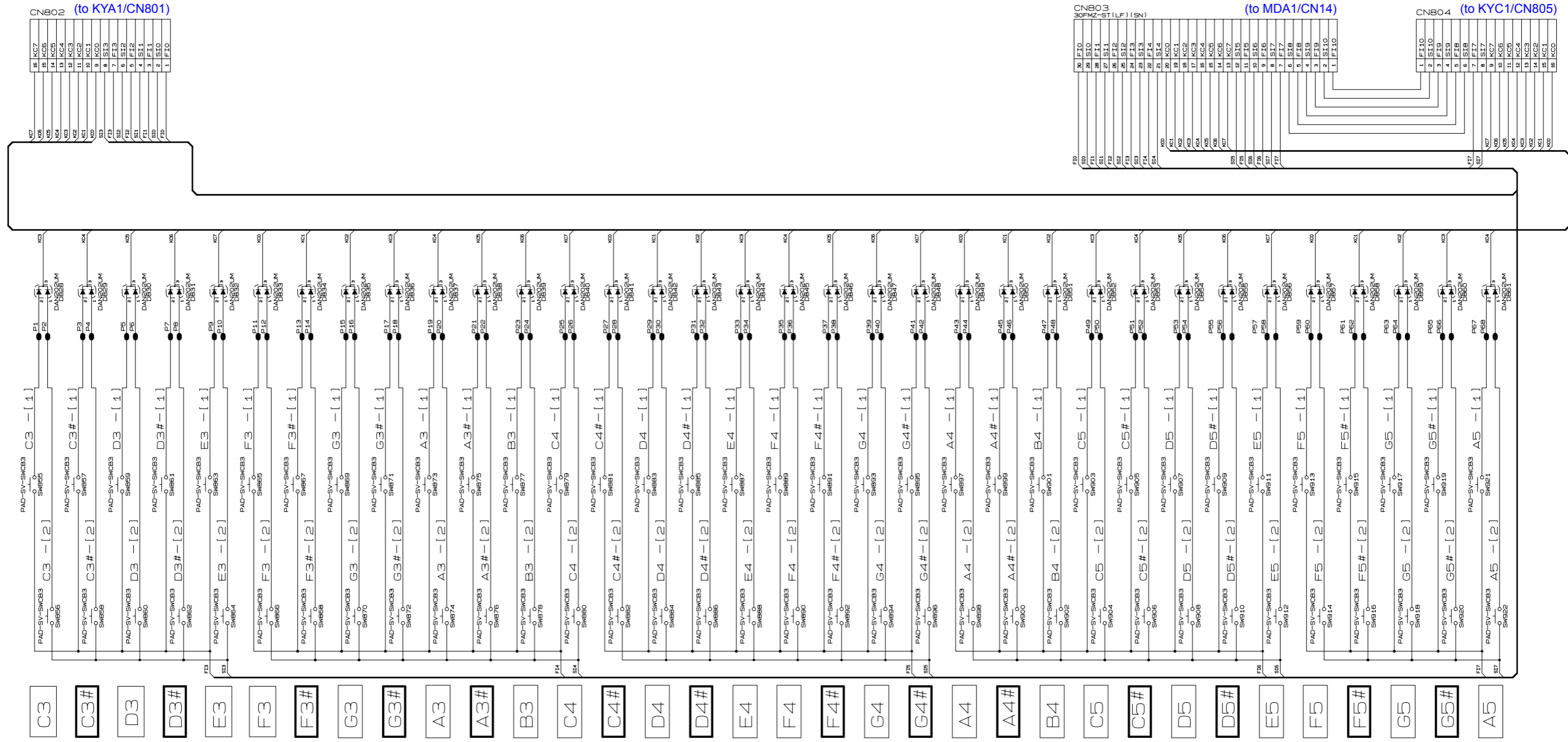
Keyboard PCB: M914-KYA1



CN801 (to KYB1/CN802)

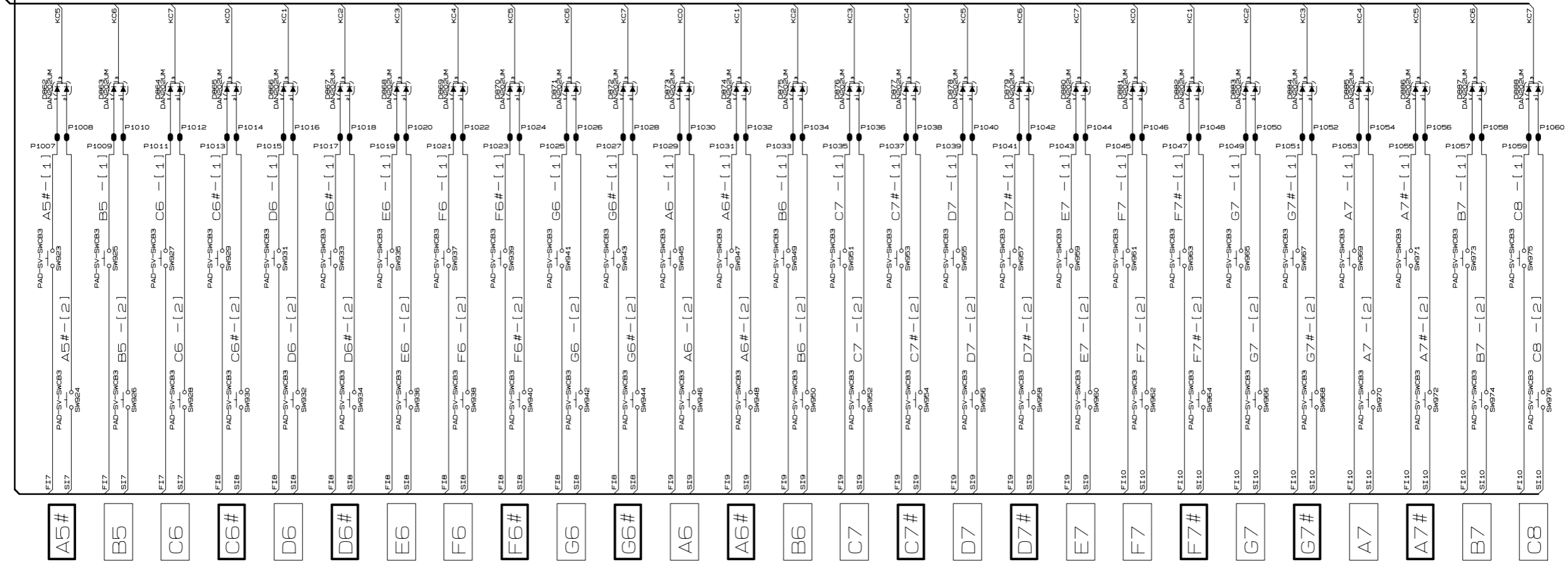
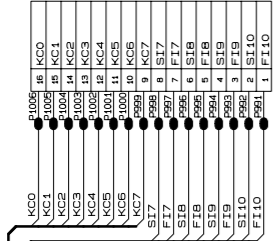
F10	P801
F10	P802
F10	P803
F10	P804
F10	P805
F10	P806
F10	P807
F10	P808
F10	P809
F10	P810
F10	P811
F10	P812
F10	P813
F10	P814
F10	P815
F10	P816
F10	P817
F10	P818
F10	P819
F10	P820
F10	P821
F10	P822
F10	P823
F10	P824
F10	P825
F10	P826
F10	P827
F10	P828
F10	P829
F10	P830
F10	P831
F10	P832
F10	P833
F10	P834
F10	P835
F10	P836
F10	P837
F10	P838
F10	P839
F10	P840
F10	P841
F10	P842
F10	P843
F10	P844
F10	P845
F10	P846
F10	P847
F10	P848
F10	P849
F10	P850
F10	P851
F10	P852
F10	P853
F10	P854
F10	P855
F10	P856
F10	P857
F10	P858
F10	P859
F10	P860
F10	P861
F10	P862
F10	P863
F10	P864
F10	P865
F10	P866
F10	P867
F10	P868
F10	P869
F10	P870

Keyboard PCB: M914-KYB1



Keyboard PCB: M914-KYC1

to KYB1/CN804



Ver. 1 : Dec. 2012

- Correction of the EXPLODED VIEW (P28)
- Correction of the PARTS LIST (P32)

**CASIO COMPUTER CO.,LTD.**

Overseas Service Division

6-2, Hon-machi 1-Chome  
Shibuya-ku, Tokyo 151-8543, Japan