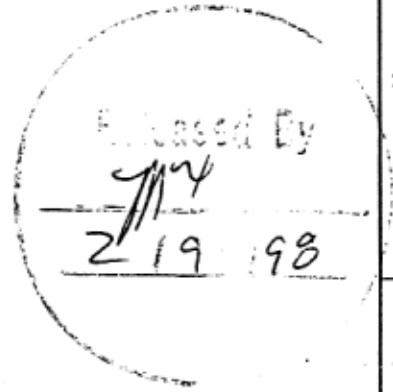


MISC. HARDWARE		QTY
33-241-01	HEATSINK BRKT	1
35-575-02	INSULATOR PAD	2
06A241-01	PC BOARD	1
35-043-01	BUSHING	2
30-440-02	4-40 X 3/8" SCREW	2
30-700-01	6-32 NUT	2
30-650-53	6-32 X 1/2" SCREW	2

NOTES
 1) CAUTION: SHOCK HAZARD!!
 THIS UNIT CONTAINS HAZARDOUS VOLTAGE. DISCONNECT POWER AND BE SURE POWER SUPPLY IS DISCHARGED BEFORE TOUCHING INTERNAL PARTS.
 2) UNLESS NOTED, RESISTOR VALUES IN OHMS, 1/4W-5% TOL. CAPACITOR VALUES IN MICROFARADS, 50V-10% TOL.
 3) (76-000-XX) JUMPER PART NUMBER TO BE DEFINED BY BOM.

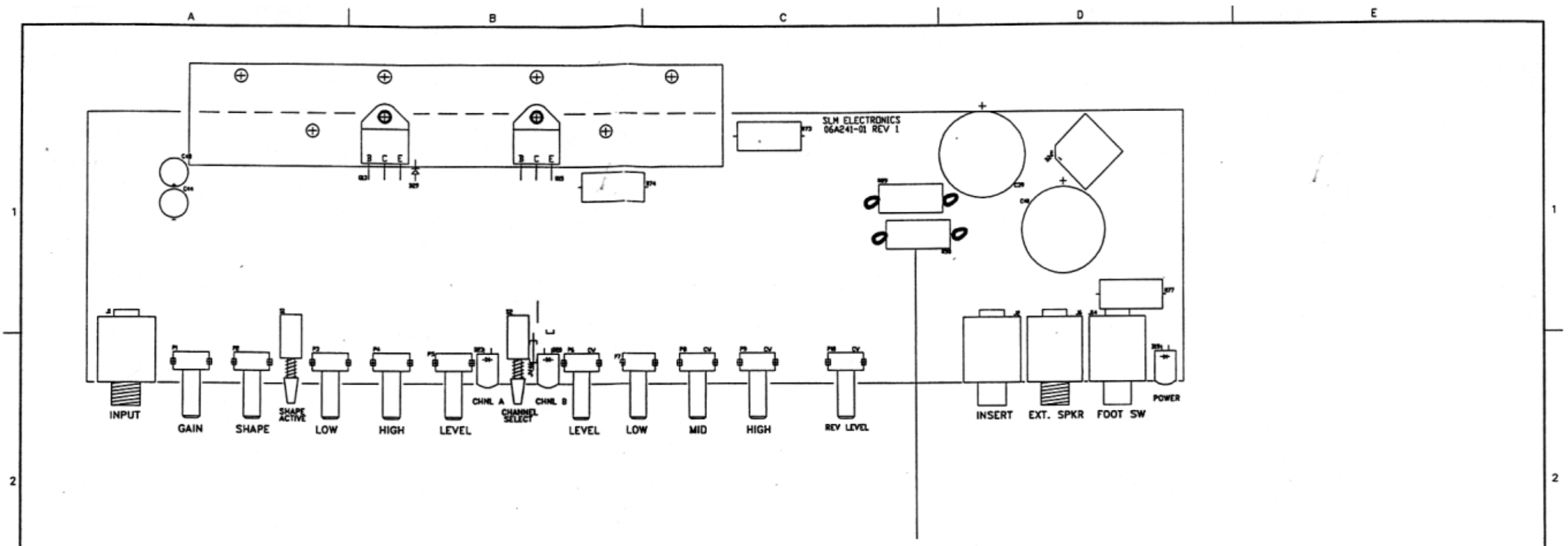
AP1	71-503-02	50K	D5	21A914-01	1N914	J29	NOT USED	R16	76-103-01	10K
C1	10A682-01	0.0068	D6	NOT USED		J30	NOT USED	R17	76-473-01	47K
C2	10A682-01	0.0068	D7	NOT USED		J31	NOT USED	R18	76-102-01	1K
C3	10A332-01	0.0033	D8	21A914-01	1N914	J0V1	NOT USED	R19	76-101-01	100
C4	10-224-03	.22uF	D9	21A914-01	1N914	J0V2	76-000-XX	R20	76-105-01	1M
C5	10A153-01	0.015	D10	21A454-01	1N4754	J0V3	NOT USED	R22	76-102-01	1K
C6	10A153-01	0.015	D11	21A914-01	1N914	J0V4	76-000-XX	R23	76-472-01	4.7K
C7	12-105-52	1uF	D12	21A914-01	1N914	J29A	NOT USED	R24	76-472-01	4.7K
C8	10A472-11	.0047uF	D13	21A914-01	1N914			R25	76-682-01	6.8K
C9	10A474-01	.47uF	D14	21A914-01	1N914			R26	76-154-01	150K
C10	12-105-81	1uF	D15	21A914-01	1N914	JV1-27	76-000-XX	R27	76-102-01	1K
C11	10A333-01	.033uF	D16	21A914-01	1N914	JV29-32	76-000-XX	R28	76-472-01	4.7K
C12	10A562-01	0.0056	D19	21-571-03	RED	JV34-51	76-000-XX	R29	76-223-01	22K
C13	10-224-03	.22uF	D20	21-571-02	GREEN			R30	76-473-01	47K
C14	12-105-52	1uF	D21	21A914-01	1N914	P1	70-254-62	R31	NOT USED	
C15	10A152-11	.0015uF	D22	21A914-01	1N914	P2	70-103-61	R32	76-472-01	4.7K
C16	12-225-81	2.2uF	D23	21-571-03	RED	P3	70-103-68	R33	76-472-01	4.7K
C17	12-105-52	1uF	D24	21-206-01	3AMP DIODE BRDG	P4	70-103-61	R34	76-223-01	22K
C18	10A560-21	56pF	D25	21-553-01	1N5353	P5	70-103-68	R35	NOT USED	
C19	12-105-52	1uF	D26	21-553-01	1N5353	P6	70-103-61	R36	76-104-01	100K
C20	10A222-11	.0022uF	D27	21A914-01	1N914	P7	70-103-68	R37	76-103-01	10K
C21	10A473-11	0.47	D28	21A914-01	1N914	P8	70-501-62	R38	76-470-01	47
C22	10A560-21	56pF	D29	21-914-01	1N914	P9	70-103-61	R39	76-103-01	10K
C23	10-224-03	.22uF	D30	21A146-01	1N746A	P10	70-103-68	R40	76-103-01	10K
C24	12-105-52	1uF	D31	21A146-01	1N746A	P11	NOT USED	R41	76-222-01	2.2K
C25	12-105-52	1uF	D32	21A914-01	1N914			R42	76-103-01	10K
C26	10A221-11	220pF	IC1	37-072-01	TL072	Q1	96-112-01	R43	76-474-01	470K
C27	12-225-81	2.2	IC2	37-072-01	TL072	Q2	96-112-01	R44	76-103-01	10K
C28	12-226-32	22	IC3	37-532-01	NE5532	Q3	96-510-01	R45	NOT USED	
C29	12-226-32	22	IC4	37-072-01	TL072	Q4	96-510-01	R46	76-222-01	2.2K
C30	12-105-81	1uF	IC5	37-072-01	TL072	Q5	96-112-01	R47	76-103-01	10K
C31	12-105-81	1uF	IC6	37-072-01	TL072	Q6	96-112-01	R48	76-682-01	6.8K
C32	10A471-11	470pF	J1	39-116-01	T/S	Q7	96-112-01	R49	76-472-01	4.7K
C33	10A471-11	470pF	J2	39-117-01	T/R/S	Q8	NOT USED	R50	76-472-01	4.7K
C34	10-104-03	0.1	J4	17-836-01	TAB	Q9	NOT USED	R51	76-472-01	4.7K
C35	10A103-11	0.01	J5	17-836-01	TAB	Q10	96-006-01	R52	76-473-01	47K
C36	10A103-11	0.01	J6	39-116-01	T/S	Q11	96-055-01	R53	76-472-01	4.7K
C37	10-332-01	0.0033	J8	17-836-01	TAB	Q12	NOT USED	R54	76-472-01	4.7K
C38	10-332-01	0.0033	J9	17-894-01	TAB	Q13	96-142-01	R55	76-913-01	91K
C39	12-478-53	4700	J10	17-894-01	TAB	Q14	96-147-01	R56	76-472-01	4.7K
C40	12-478-53	4700	J11	17-894-01	TAB	Q15	96-147-01	R57	76-102-02	1K
C41	10-104-03	0.1	J12	NOT USED		Q16	NOT USED	R58	76-102-02	1K
C42	10-104-03	0.1	J13	NOT USED		Q17	96-055-01	R59	76-682-02	6.81K
C43	12-107-32	100	J14	39-117-01	T/R/S	Q18	96-013-01	R60	76-682-02	6.81K
C44	12-107-32	100	J15	17-836-01	TAB	Q19	96-112-01	R61	78-821-01	820
C45	10A473-11	0.047	J16	17-836-01	TAB	Q20	96-175-01	R62	76-102-01	1K
C46	10A473-11	0.047	J17	17-836-01	TAB	R1	76-153-01	R63	76-102-01	1K
C47	10A473-11	0.047	J18	17-836-01	TAB	R2	76-474-01	R64	78-821-01	820
C48	10A473-11	0.047	J19	17-836-01	TAB	R3	76-474-01	R65	76-224-01	220K
C49	12-105-81	1uF	J20	17-836-01	TAB	R4	76-682-01	R66	76-222-01	2.2K
C50	12-105-52	1uF	J21	17-500-01	GNDLUG	R5	76-472-01	R67	76-221-01	220
C52	12-105-52	1uF	J22	17-836-01	TAB	R6	76-153-01	R68	76-221-01	220
C53	12-105-52	1uF	J23	17-836-01	TAB	R7	76-223-01	R69	76-472-01	4.7K
C54	10A560-21	56pF	J24	17-836-01	TAB	R8	76-152-01	R70	76-472-01	4.7K
C55	10A473-11	.047uF	J25	17-836-01	TAB	R9	76-223-01	R71	76-221-01	220
C56	10A104-01	.1uF	J26	17-836-01	TAB	R10	76-681-01	R72	NOT USED	
C57	10A104-01	.1uF	J27	17-836-01	TAB	R11	76-102-01	R73	78-330-05	0.33
D1	21A914-01	1N914	J28	17-836-01	TAB	R12	76-473-01	R74	78-330-05	0.33
D2	21A914-01	1N914				R13	76-473-01	R75	NOT USED	
D3	21A914-01	1N914				R14	76-223-01	R76	78-033-01	3.3
D4	21A914-01	1N914						R77	78-001-05	0.1

R80	76-333-01	33K
R81	76-105-01	1M
R82	76-152-01	1.5K
R84	76-333-01	33K
R85	76-105-01	1M
R86	77-752-01	7.5K
R87	76-152-01	1.5K
R88	NOT USED	
R89	78-271-05	270
R90	78-271-05	270
R91	76-103-01	10K
R92	76-102-01	1K
R93	76-103-01	10K
R94	76-472-01	4.7K
R95	76-471-01	470
R96	76-333-01	33K
S1	88-302-01	DUAL SWIT
S2	88-302-01	DUAL SWIT
S3	NOT USED	




REV	DATE	BY	CHK'D	DESCRIPTION
8	09/22/97	MAG		CHG'D 30-440-06 TO 30-440-02 ON PICTORIAL PER ECO 970543.
7	08/27/97	SWR		ADDED T1 WIRING HOOK-UP TO SCHEMATIC. PICTORIAL NOT AFFECTED. PER ECO #970444.
6	03/15/97	MAG		ADDED GOOP DWG (PG 2) PER ECO 970016.
5	01/16/97	MAG		CHG'D 10mV TO 7.5mV PER ECO 970023.
4	02/09/96	SWR		CHANGED R52 TO 76-473-01 47K PER ECO #960044.
3	10/3/95	REM		CHG'D J8 AS SHOWN PER E950049.
2	07/06/95	JCJ		MADE CHANGES ON FUSE PER ECO #95708
1	03/30/95	JCJ		CHG'D Q20 FROM J176 TO J175 PER ECO# E0634

SIGNATURES:		DATE:	1180 BORNHAY DR. ST. LOUIS, MISSOURI 63148
DRAWN:	MGA	07/15/94	
CHK'D:	TEK	11/14/94	PROJECT NAME:
APP'D:	TEK	11/14/94	GX-65 GUITAR AMP
ORIGINAL ISSUED:	2Y		DRAWING NAME:
			PICTORIAL
PLOT DATE:	09/22/97		DRAWING NO.
PLOT TIME:	15:15:08		07-241-01
FILE NAME:	24101p8_		REV. 8_
		SCALE: 1:1	SHEET: 1 OF 2



THESE PARTS TO BE GOOPED
 ON THE LEADS ONLY. GOOP
 PER STANDARD GOOPING
 PRACTICE.

SIGNATURES:	DATE:		1180 BORMAN DR. ST. LOUIS, MISSOURI 63148
DRAWN: MAG	03/15/97	PROJECT NAME:	GX-65 GUITAR AMP
CHK'D: TEK	11/14/94	DRAWING NAME:	GOOP DWG
APP'D: TEK	11/14/94	DRAWING NO.	07-241-01
ORIGINAL ISSUED:		REV.	8
PLOT DATE:	09/22/97	SCALE:	1:1
PLOT TIME:	15:15:08	SHEET:	2 OF 2
FILE NAME:	24101p8		