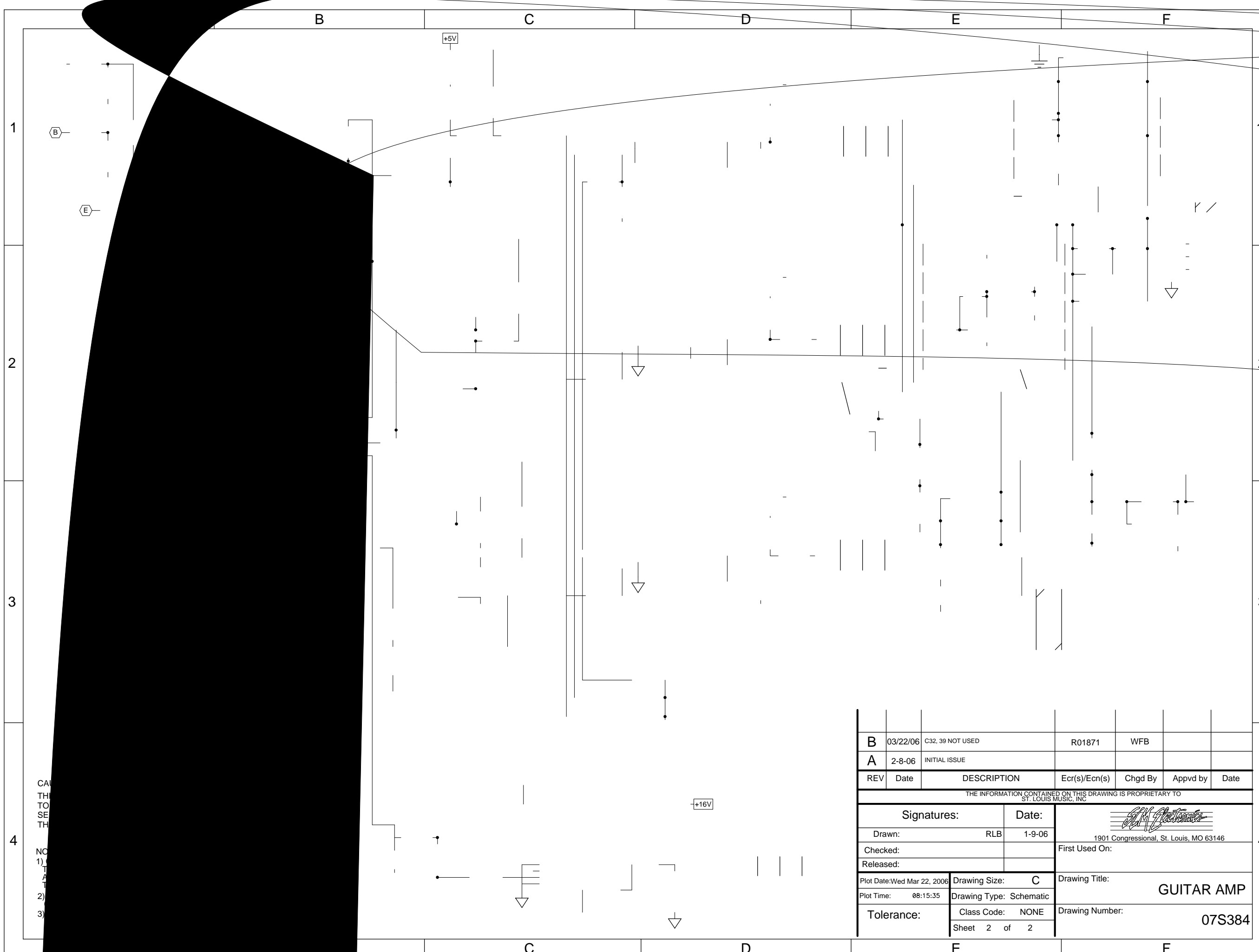


CAUTION:
 THIS SCHEMATIC IS PROVIDED FOR USE BY QUALIFIED PERSONNEL. TO AVOID RISK OF ELECTRIC SHOCK, REFER SERVICING TO QUALIFIED SERVICE PERSONNEL. DO NOT PERFORM ANY SERVICING BEYOND THAT EXPLAINED IN THE OPERATING INSTRUCTIONS.

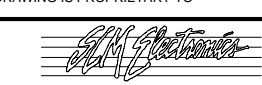
- NOTES:**
- 1) CAUTION: SHOCK HAZARD!! THIS UNIT CONTAINS HAZARDOUS VOLTAGE. DISCONNECT POWER AND BE SURE POWER SUPPLY IS DISCHARGED BEFORE TOUCHING INTERNAL PARTS.
 - 2) UNLESS NOTED, RESISTOR VALUES IN OHMS, 1/4W-5% TOL. CAPACITOR VALUES IN MICROFARADS, 50V-10% TOL.
 - 3) VOLTAGES ARE MEASURED WITH 1 MEGOHM OSCILLOSCOPE AND 10 MEGOHM DIGITAL VOLTMETER.

B	03/22/06	C32, 39 NOT USED	R01871	WFB		
A	2-8-06	INITIAL ISSUE				
REV	Date	DESCRIPTION	Ecr(s)/Ecn(s)	Chgd By	Appvd by	Date
THE INFORMATION CONTAINED ON THIS DRAWING IS PROPRIETARY TO ST. LOUIS MUSIC, INC.						
Signatures:			Date:		 1901 Congressional, St. Louis, MO 63146	
Drawn: RLB			1-9-06			
Checked:			Released:		First Used On:	
Plot Date: Wed Mar 22, 2006		Drawing Size: C		Drawing Title: GUITAR AMP		
Plot Time: 08:15:34		Drawing Type: Schematic		Drawing Number: 07S384		
Tolerance:		Class Code: NONE		Sheet 1 of 2		



REV	Date	DESCRIPTION	Ecr(s)/Ecn(s)	Chgd By	Appvd by	Date
B	03/22/06	C32, 39 NOT USED		R01871	WFB	
A	2-8-06	INITIAL ISSUE				

THE INFORMATION CONTAINED ON THIS DRAWING IS PROPRIETARY TO ST. LOUIS MUSIC, INC.

Signatures:		Date:	 1901 Congressional, St. Louis, MO 63146
Drawn:	RLB	1-9-06	
Checked:			First Used On:
Released:			
Plot Date: Wed Mar 22, 2006	Drawing Size: C	Drawing Title: GUITAR AMP	
Plot Time: 08:15:35	Drawing Type: Schematic	Drawing Number: 07S384	
Tolerance:	Class Code: NONE	Sheet 2 of 2	

CAN
THI
TO
SE
TH

NO
1)
T
A
2)
3)