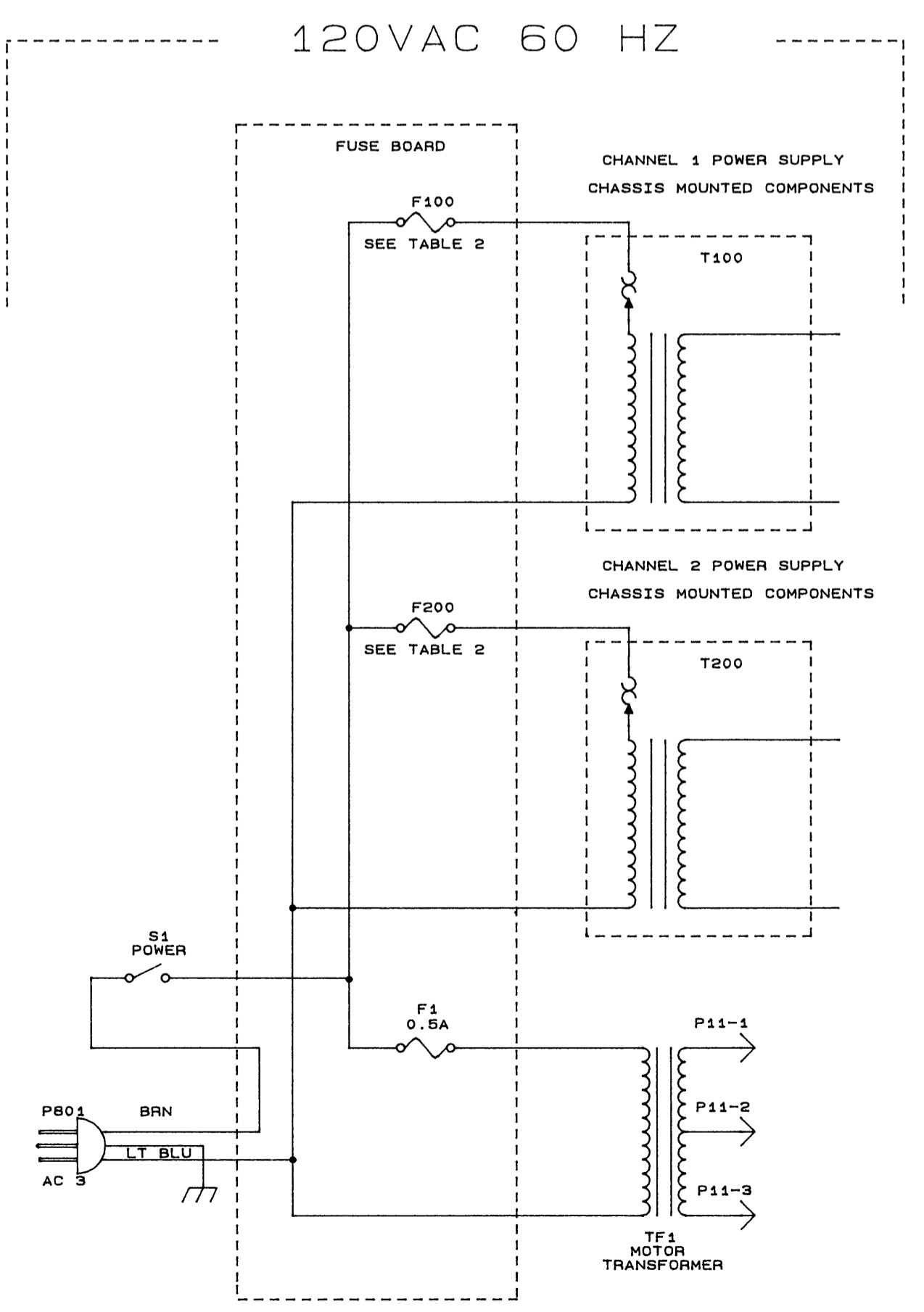
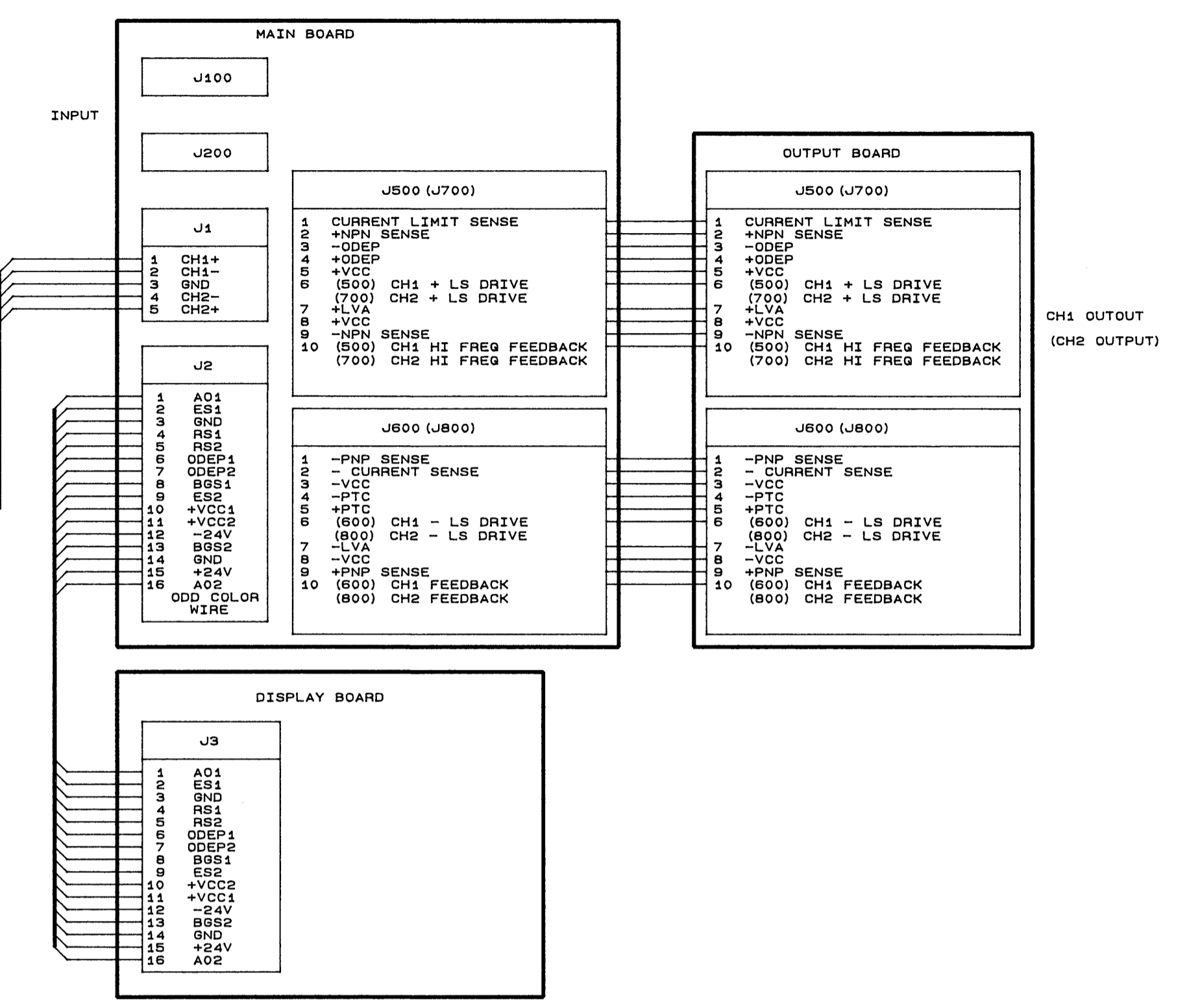
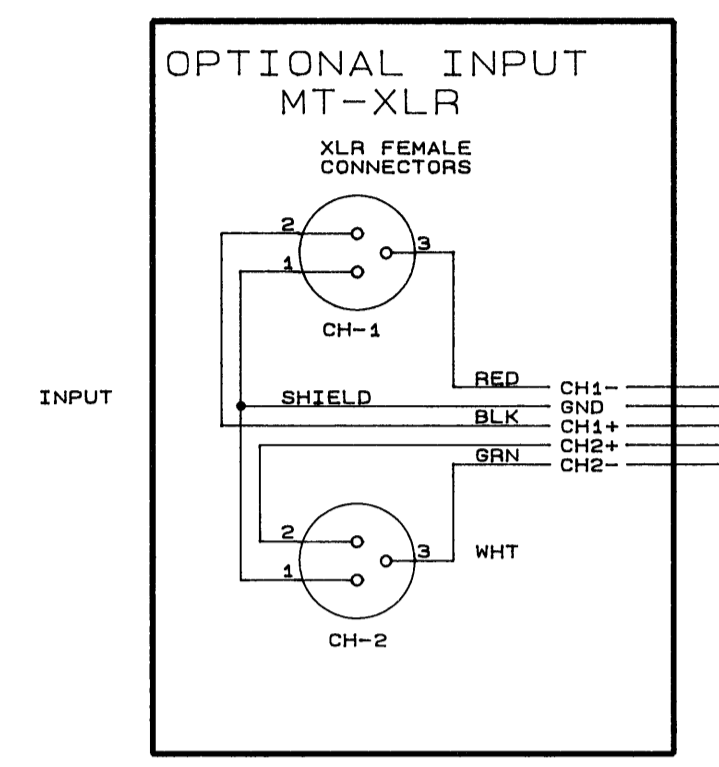
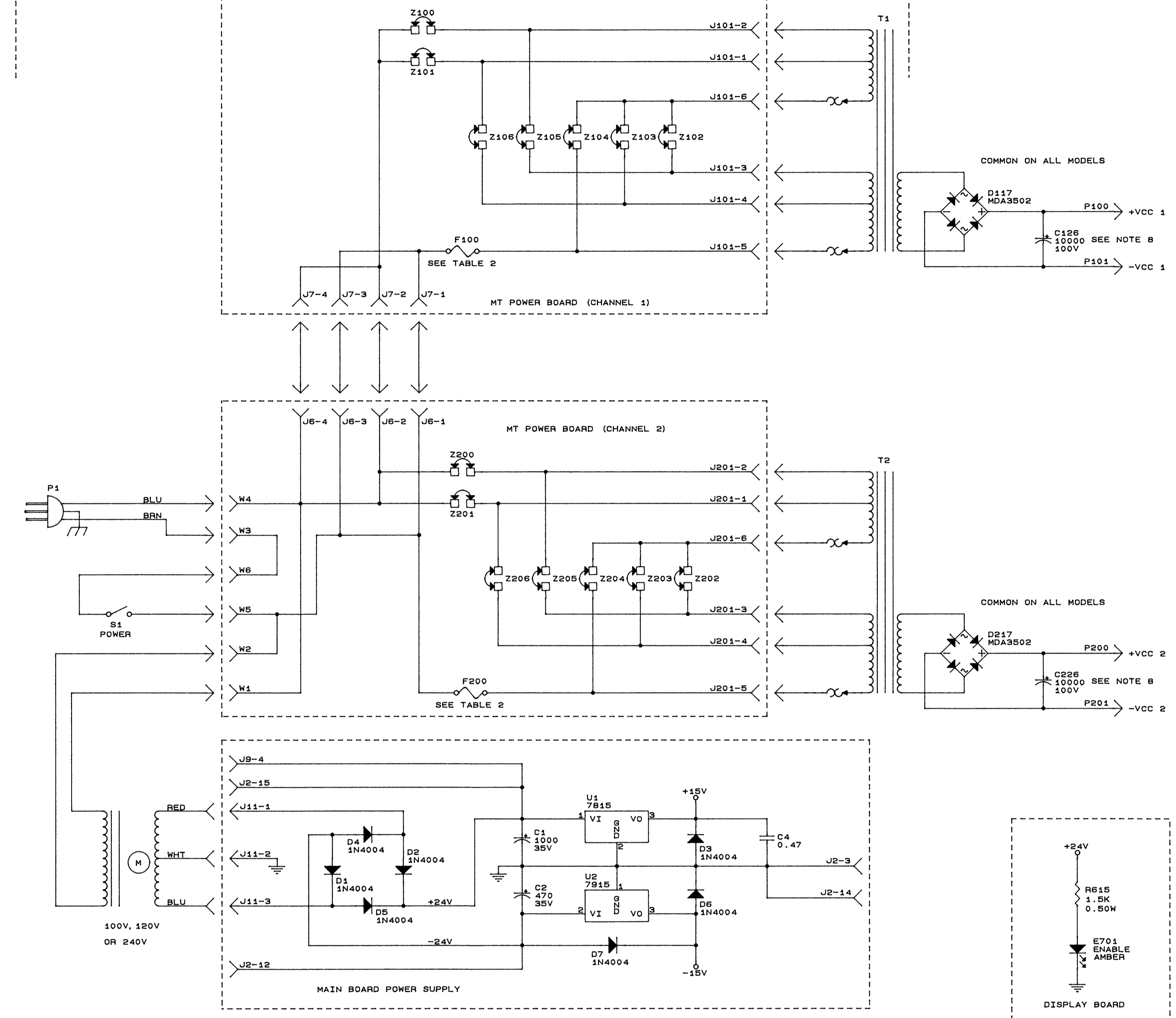


E.C.N.	ZONE	REV	DESCRIPTION	DATE	BY	CHK	HE	LE	PE	APPROVALS

INTERNATIONAL
50-60 HZ



- NOTES:
- ALL RESISTORS ARE IN OHMS, 1/4W, 5% UNLESS OTHERWISE SPECIFIED.
 - ALL CAPACITORS ARE IN MICROFARADS UNLESS OTHERWISE SPECIFIED.
 - CHANNEL 1 SHOWN, FOR CHANNEL 2 ADD 100 TO REFERENCE DESIGNATORS. (EXAMPLE: CHANNEL 1 R101 WOULD BE CHANNEL 2 R201.) CONNECTOR AND IC PIN NUMBERS FOR CHANNEL 2 ARE SHOWN IN PARENTHESIS WHEN THEY DIFFER FROM CHANNEL 1.
 - ALL DIODES ARE 1N4148 UNLESS OTHERWISE SPECIFIED.
 - ON J500 AND J700 THE STRIPED WIRE GOES TO PIN 10 OF THE BOARD AND THE PIN NUMBERS MOLDED ON THE CABLE SOCKET ARE REVERSED FROM THE PIN NUMBERS ON THE BOARD AND THE SCHEMATIC.
 - POWER SUPPLY VOLTAGES SHOWN UNDER NO LOAD CONDITION.
 - CHANNEL 2 PRE-DRIVER BASES LOOP THROUGH STEREO-MONO SWITCH S4, SECTIONS E AND F.
 - VALUES ARE MODEL DEPENDANT AS FOLLOWS:

	MT600/MT601	MT1200/1201
C126, C226	7800uF 90V	10000uF 100V
C113, C116, C213, C216	0.47uF 50V	6.8uF 50V
R168, R268	976	953
R175, R275	14.7K 1%	11.3K 1%
R177, R277	47.5K 1%	34.0K 1%
R915, R916, R1015, R1016	39	10
+VCC	+40 VOLTS	+45 VOLTS
-VCC	-40 VOLTS	-45 VOLTS
MAIN MODULE	G43039-2	G43031-6
OUTPUT MODULE	G43202-3	G43202-3

9. Q304, Q308, Q309, Q313, Q404, Q408, Q409, AND Q413 ARE OMITTED FROM MODEL MT600/MT601

TABLE 1
AC LINE VOLTAGE SELECTION

VOLTAGE	JUMPER INSTALLATION
100V	Z101, Z104, Z106, Z201, Z204, Z206
120V	Z100, Z104, Z105, Z200, Z204, Z205
200V	Z101, Z103, Z201, Z203
220V	Z101, Z102, Z201, Z202
240V	Z100, Z102, Z200, Z202

TABLE 2
FUSE SELECTION F100/F200

MODEL	MT600/601	MT1200/1201
LINE VOLTAGE		
100/200	7A	20A
200/220/240	5A	10A

COMMON

LAST USED	OBSOLETE
C7	C3
D7	
R18	R5, 6, 11-15
S4	S1
U2	

CHANNEL 1

LAST USED	OBSOLETE
C157	C102, 121, 125, 127, 128, 131, 132, 142, 143
D132	D100-107, 116-119
N102	N100
Q124	Q104, 111, 114
R199	R169, 172, 178
R921	R900-905
U104	

CHANNEL 2

LAST USED	OBSOLETE
C257	C202, 221, 225, 227, 228, 231, 232, 242, 243
D232	D200-207, 216-219
N202	N200
Q224	Q204, 211, 214
R299	R269, 272, 278
R1021	R1000-1005
U204	

CROWN INTERNATIONAL, INC.
1718 WEST MISHAMAKA ROAD ELKHART, IN. 46517 PHONE (219) 294-8000

SCHEM., MT600/601/1200/1201

PRINTS TO	DATE	APPROVED BY :	DO NOT SCALE PRINT
G	03/15/94	ME	
CHECKED		EE	SUPERSEDES J0438-2/J0528-4 J0528-8/J0532-2
SCALE	NONE	PE JM	E.C.N.
PROJ #	D264		C.P.N. SHEET 2 OF 2
NEXT ASSEMBLY			J0638-8