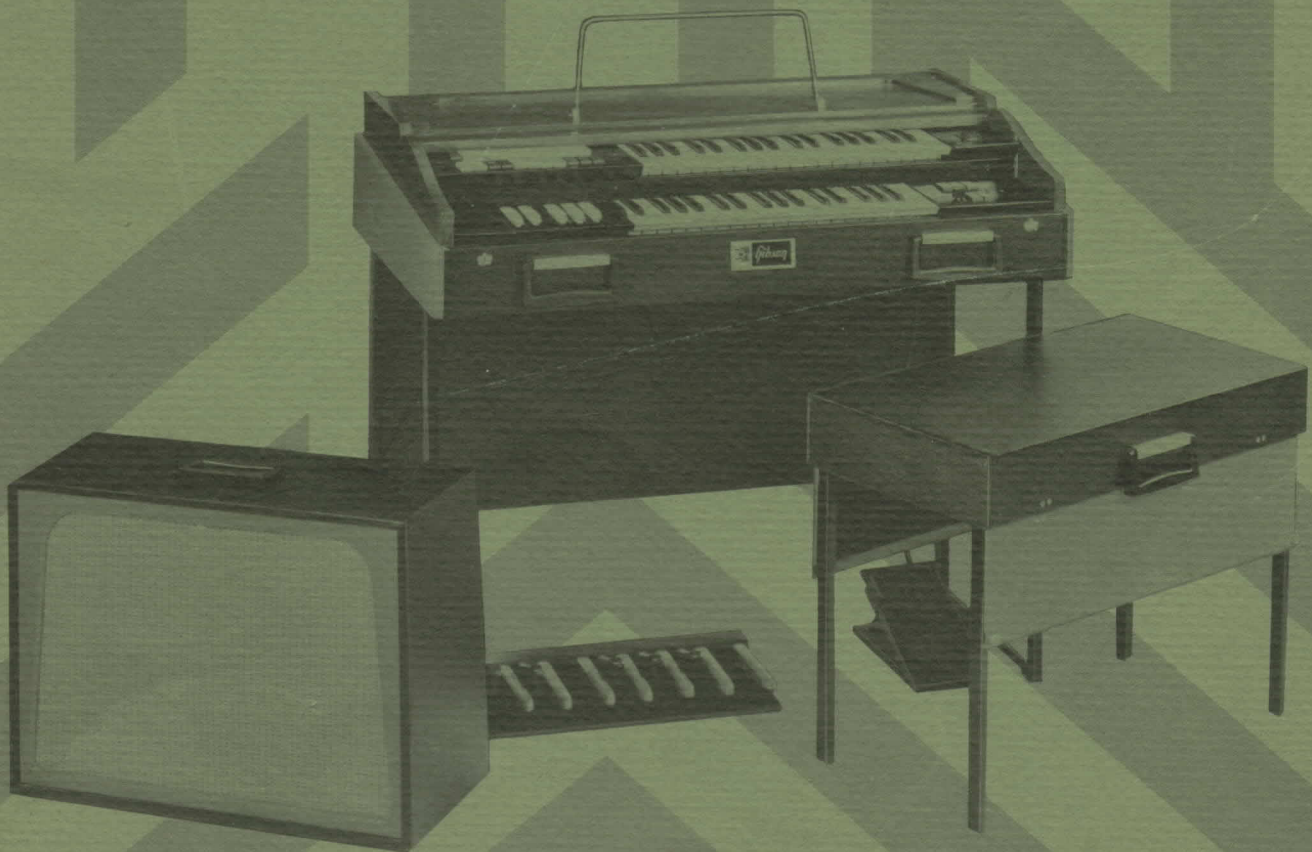


MODEL  
G-201

SERVICE MANUAL

*Gibson*

PORTABLE ORGAN

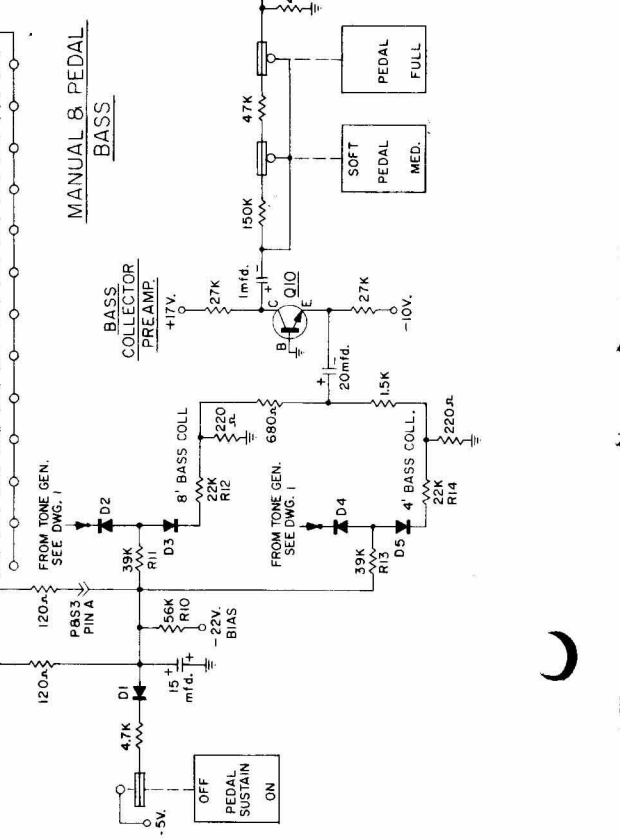
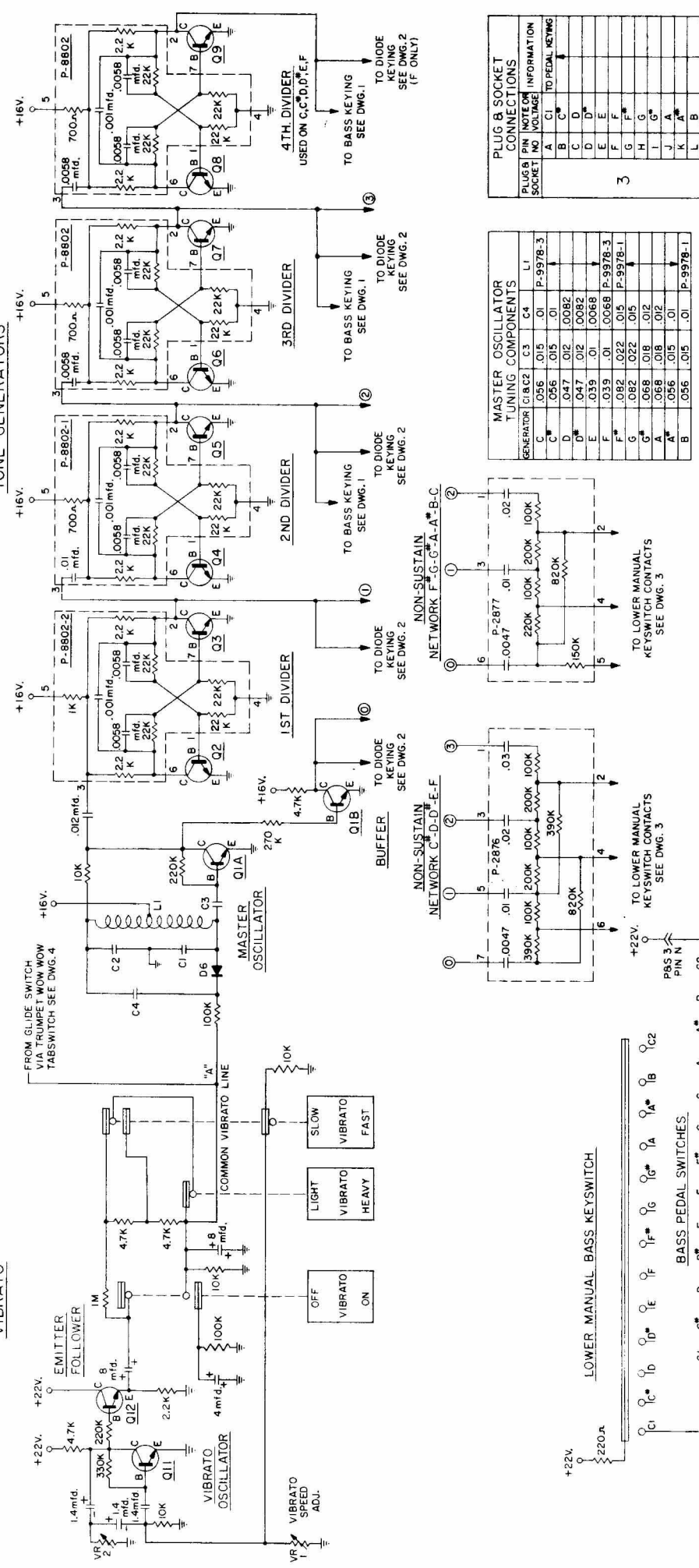


## TABLE OF CONTENTS

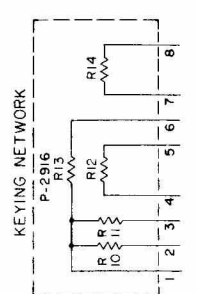
SCHEMATIC DIAGRAMS		<u>PAGE</u>
Drawing #1	Tone Generator Vibrato and Bass . . . . .	2
Drawing #2	Percussion, Sustain, Staccato and Upper Manual Diode Keying . . . . .	3
Drawing #3	Upper/Lower Manual Tabswitching and Lower Manual Keyswitches . . . . .	4
Drawing #4	Quality Control . . . . .	5
Drawing #5	Power Supply, Amplifier, Speakers and Reverb . . .	6
DIODE LAYOUTS AND CHARTS		
Diode Layout and Chart (Bass/Pedal) . . . . .		7
Diode Layout and Chart (Keyboard) . . . . .		8 & 9
PHOTOGRAPHS		
Service Access and Circuit Location:		
Organ . . . . .		10
Organ with cover removed and tone generator assembly raised . .		11
Organ with upper manual raised . . . . .		12
Organ with complete chassis assembly raised . . . . .		13
Amplifier and speaker case open . . . . .		14
Printed Circuit Boards, Chassis and Assemblies:		
Power Supply Chassis . . . . .		15
Tone Generator Printed Circuit Board . . . . .		16
Vibrato Printed Circuit Board and Bass Keying Printed Circuit Board . . . . .		17
Percussion Printed Circuit Board . . . . .		18
Reverb Printed Circuit Board . . . . .		19
Quality Control Printed Circuit Board . . . . .		20
Diode Keying Boards . . . . .		21
Expression Pedal Assembly . . . . .		22
Bass Pedal Assembly . . . . .		23

### VIBRATO

### TONE GENERATORS



3 CHART	
KEY	GEN.
A	C
B	D
C	E
D	F
E	G
F	A
G	B
A*	C
B*	D
C*	E
D*	F
E*	G
F*	A
G*	B
A**	C
B**	D
C**	E
D**	F
E**	G
F**	A
G**	B



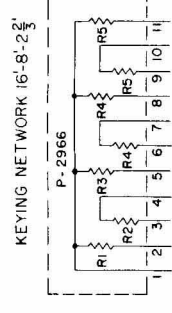
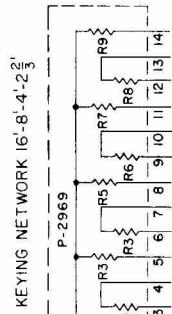
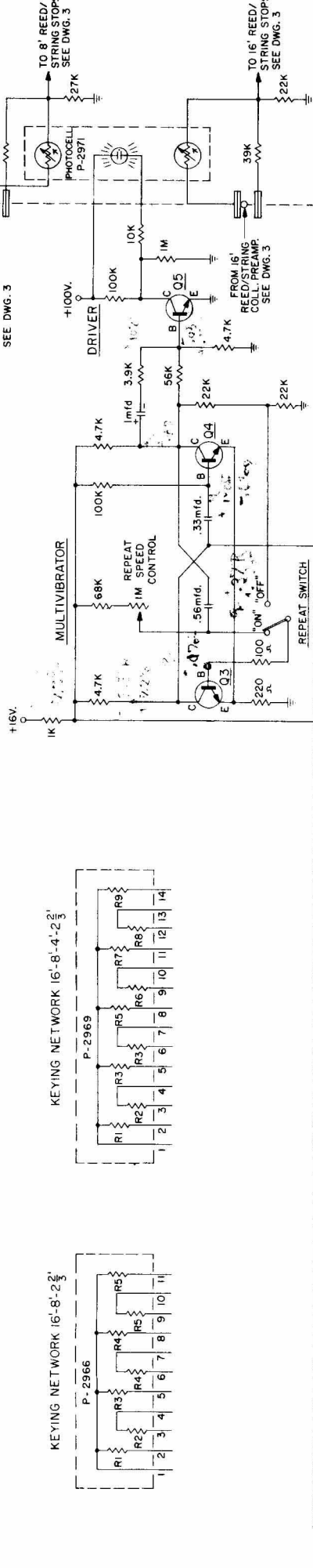
**TONE GENERATOR**  
VIBRATO & BASS  
DWG. NO. 1 MODEL G201

- NOTE:**
- 1. CONNECTIONS BETWEEN TONE GENERATOR OUTPUTS AND NON-SUSTAIN NETWORKS SHOWN WITH CIRCLED NUMBERS.
  - 2. ONE 100K RESISTOR FROM EACH TONE GENERATOR CONNECTS TO 'A'.
  - 3. Q1A, Q1B, Q10, Q11 B Q12 ARE P-8393.
  - 4. Q2 TO Q9 ARE P-8394A.
  - 5. VR10K IS P-8894.
  - 6. D1 TO D6 ARE P-4799.
  - 7. ALL TAB SWITCHES SHOWN IN "ON" POSITION.
  - 8. ALL TAB SWITCHES SHOWN IN "OFF" POSITION.
  - 9. ALL RESISTORS WITH "R" NUMBERS ARE CONTAINED IN NETWORKS.

PLUG & SOCKET NO.	PIN	NOTATION	FUNCTION
A	C1	TO PEDAL KEYS	
B	C	TO PEDAL KEYS	
C	D	TO PEDAL KEYS	
D	D*	TO PEDAL KEYS	
E	E	TO PEDAL KEYS	
F	F	TO PEDAL KEYS	
G	F*	TO PEDAL KEYS	
H	G	TO PEDAL KEYS	
I	G*	TO PEDAL KEYS	
J	A	TO PEDAL KEYS	
K	A*	TO PEDAL KEYS	
L	B	TO PEDAL KEYS	
M	C2	TO PEDAL KEYS	
N	+22V	TO PEDAL KEYS	

**PERCUSSION**

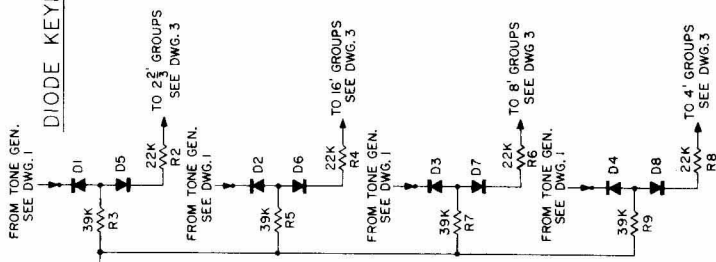
FROM 8'4" REED/STRING COLLECTOR PREAMP. SEE DWG. 3



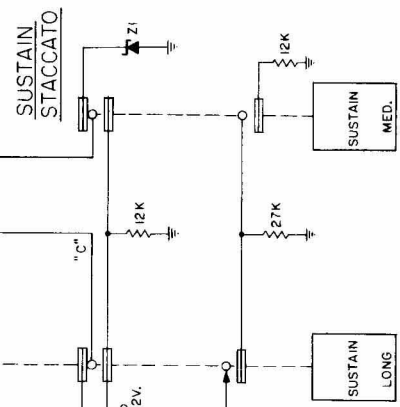
**NOTE:**

1. R1 TO R9 ARE CONTAINED IN KEYING NETWORKS P-2969 OR P-2966.
2. D1 TO D11 ARE P-4799, D12 IS P-2440.
3. Z1 (ZENER DIODE) IS P-1445.
4. Q1 TO Q4 ARE P-8393, Q5 IS P-2888.
5. "A"-PERCUSSION KEYING LINE-ONE 7mfd. CAPACITOR FROM EACH NOTE CONNECTS AT THIS POINT.
6. "B"-ONE OF 37 CONTACTS ON THE STACCATO RELAY.
7. "C"-BIAS VOLTAGE-ONE 56K RESISTOR FROM EACH NOTE CONNECTS AT THIS POINT.
8. "D"-SUSTAIN CONTROL LINE-ONE 2.2K RESISTOR FROM EACH NOTE CONNECTS AT THIS POINT.
9. ALL TAB SWITCHES SHOWN IN "ON" POSITION.
10. ALL KEY SWITCHES SHOWN IN "OFF" POSITION.

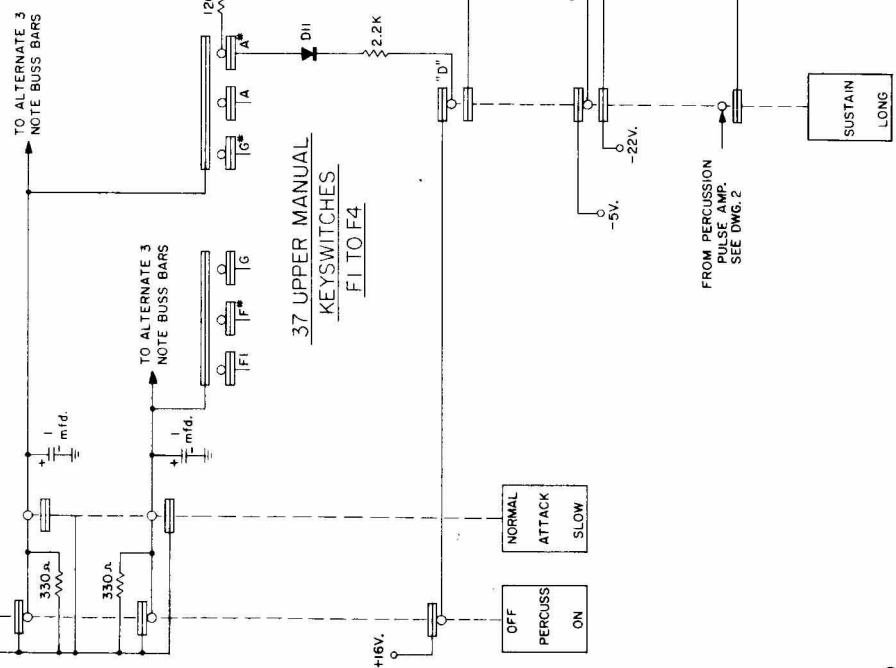
**DIODE KEYING**



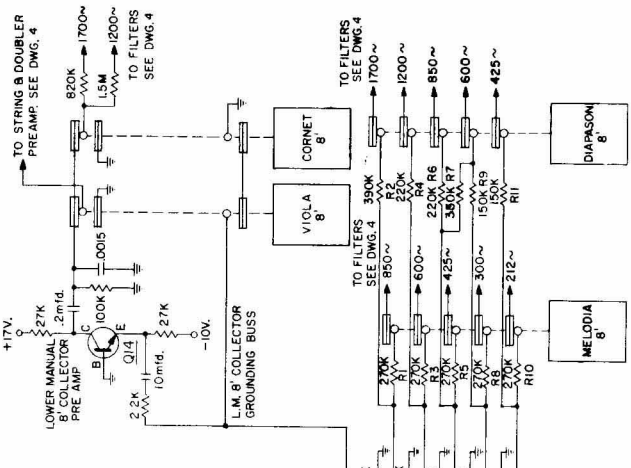
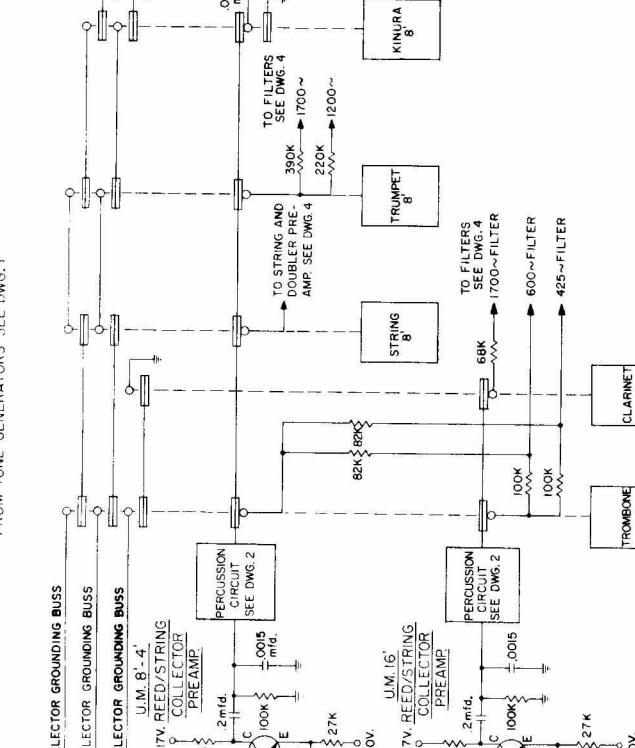
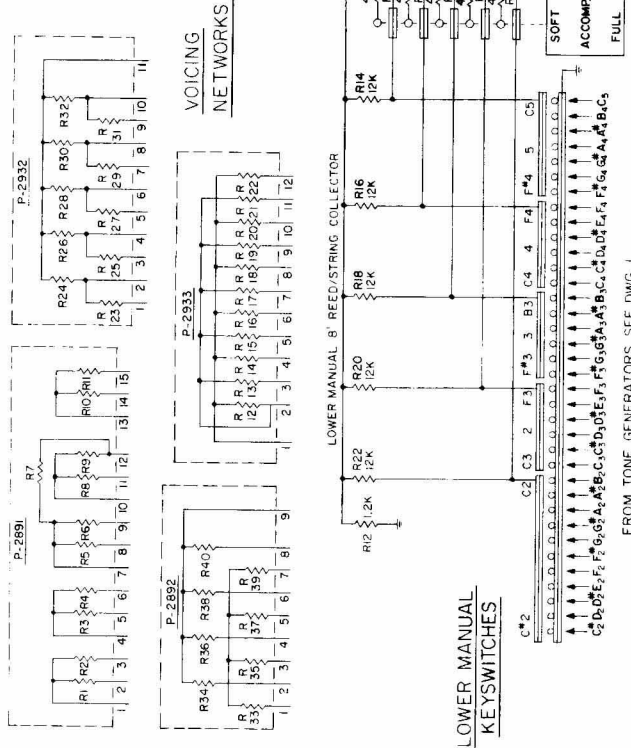
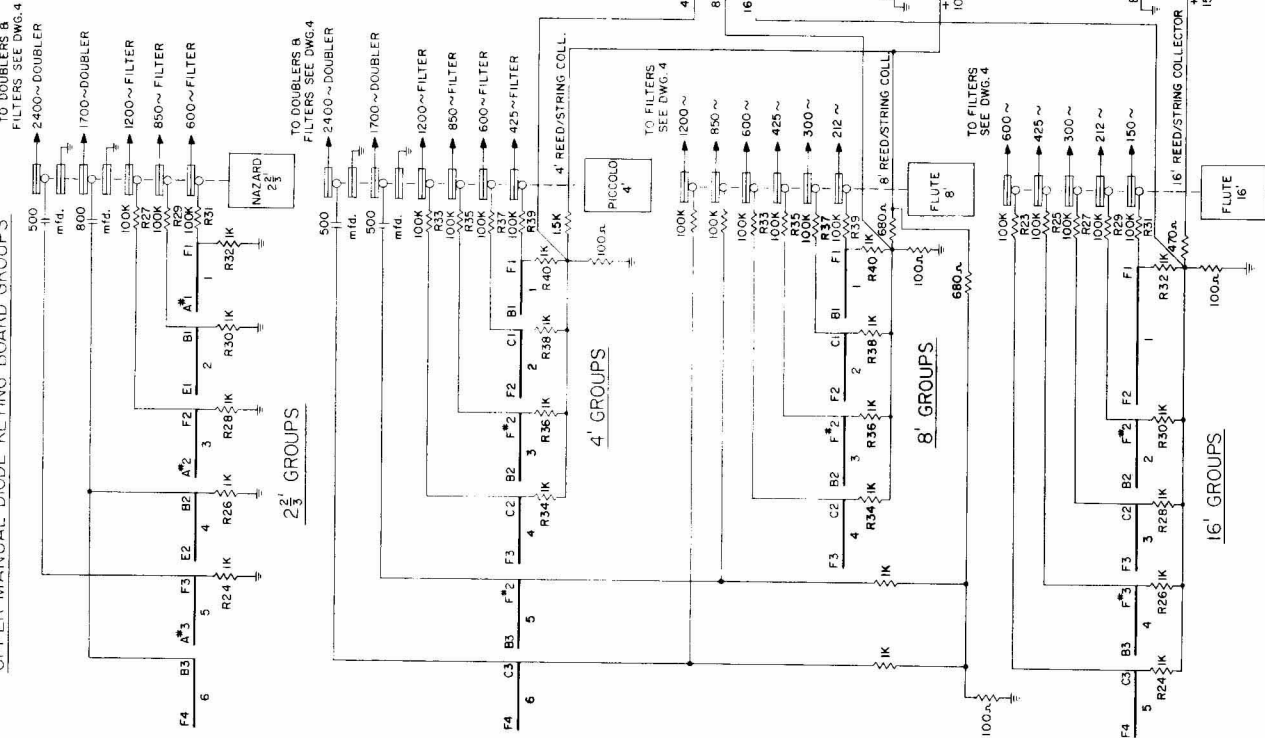
**SUSTAIN STACCATO**



**37 UPPER MANUAL KEYSWITCHES F1 TO F4**



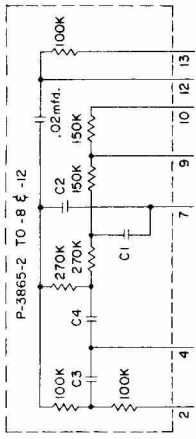
UPPER MANUAL DIODE KEYING BOARD GROUPS



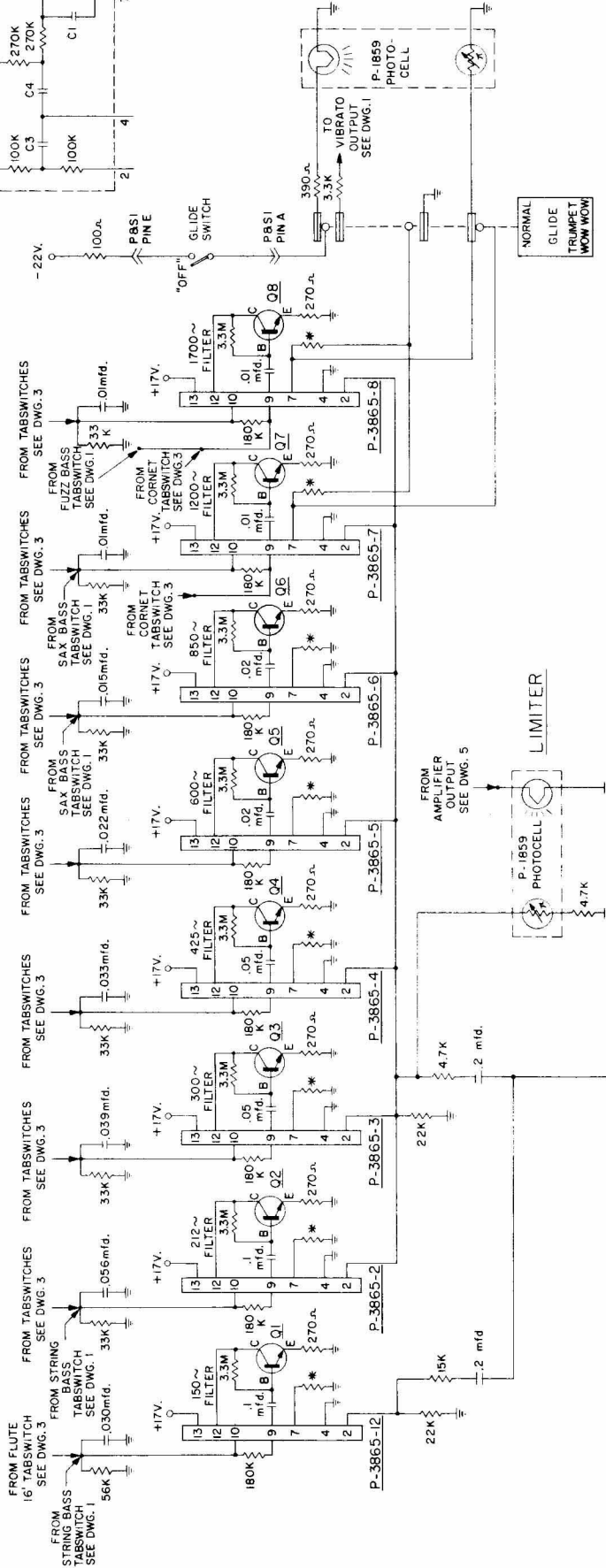
- NOTE:
1. Q12 TO Q14 ARE P-2298
  2. +17V SUPPLY LOCATED ON QUALITY CONTROL BOARD
  3. ALL TAB SWITCHES SHOWN IN "ON" POSITION. ALL KEYSWITCHES SHOWN IN "OFF" POSITION.
  4. ALL RESISTORS WITH "B" NUMBERS ARE CONTAINED IN VOICING NETWORKS. DUPLICATION OF "B" NUMBERS IS DUE TO THE USE OF MORE THAN ONE NETWORK OF THE SAME NUMBER.

UPPER/LOWER MANUAL  
TABSWITCHING 8  
LOWER MANUAL KEYSWITCHES  
DWG. NO. 3  
MODEL G201

**FILTER NETWORK**



**FILTERS**



**PLUG & SOCKET CONNECTIONS**

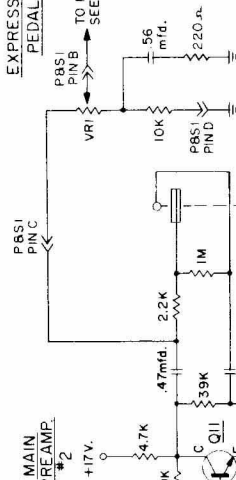
PLUG PIN VOLTAGE	SOCKET INFO	INFORMATION
A -22V.	FROM GLIDE SWITCH	
B AUDIO	FROM EXP. PEDAL TO REVERB	
C AUDIO	FROM G.C. TO EXP. PEDAL	
D GROUND	EXP. PEDAL TO GROUND	
E -22V.	TO GLIDE SWITCH	

**FILTER NETWORK VALUES**

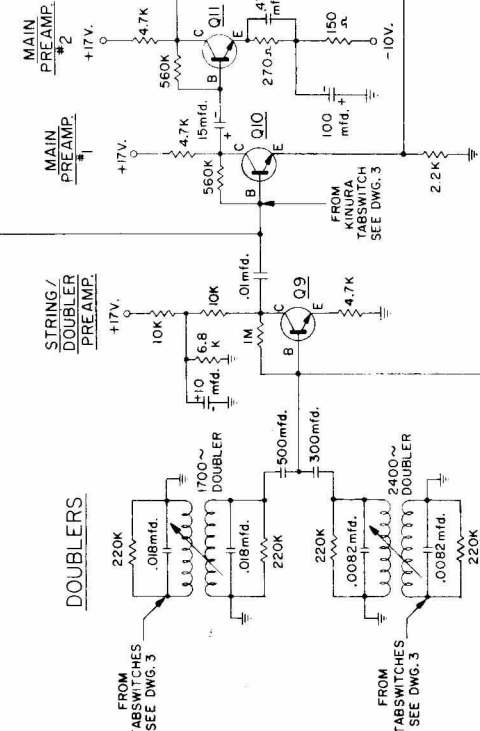
PART NO.	FREQ.	SYMBOL	CAP
P-3865-12	150~	C1-C2	.02
		C3-C4	.047
P-3865-2	212~	C1-C2	.0033
		C3-C4	.0068
P-3865-3	300~	C1-C2	.0022
		C3-C4	.0047
P-3865-4	425~	C1-C2	.0033
		C3-C4	.0015
P-3865-5	600~	C1-C2	.0015
		C3-C4	.0022
P-3865-6	850~	C1-C2	.0015
		C3-C4	.001
P-3865-7	1200~	C1-C2	.0015
		C3-C4	.001
P-3865-8	1700~	C1-C2	.0015
		C3-C4	.001

**NOTE**  
 1. Q1 TO Q8, Q10 & Q11 ARE P-2298.  
 2. Q9 IS P-2873.  
 3. L1 & L2 (DOUBLER COILS) ARE P-6121-1.  
 4. VRI 25K EXPRESSION PEDAL CONTROL P-8800-1.  
 5. \* FACTORY TAILORED RESISTOR.  
 6. ALL TABSWITCHES SHOWN IN "OFF" POSITION.

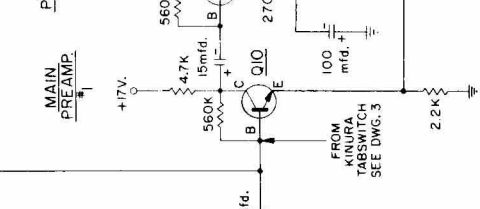
**EXPRESSION PEDAL**



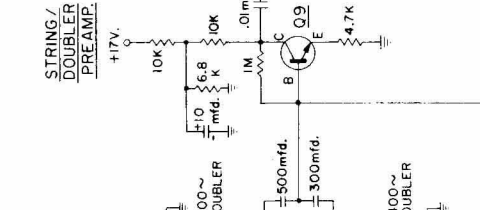
**MAIN PREAMP #2**



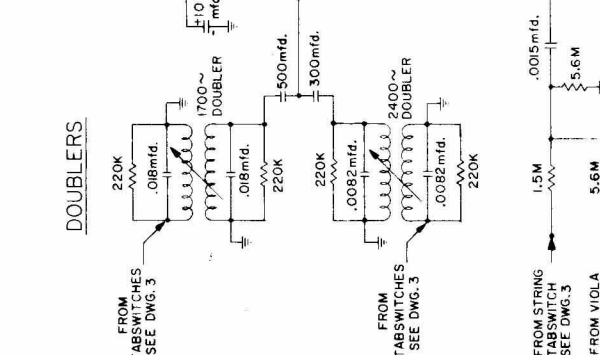
**MAIN PREAMP #1**



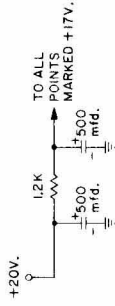
**STRING/DOUBLER PREAMP**



**DOUBLERS**



**+17V. SUPPLY**

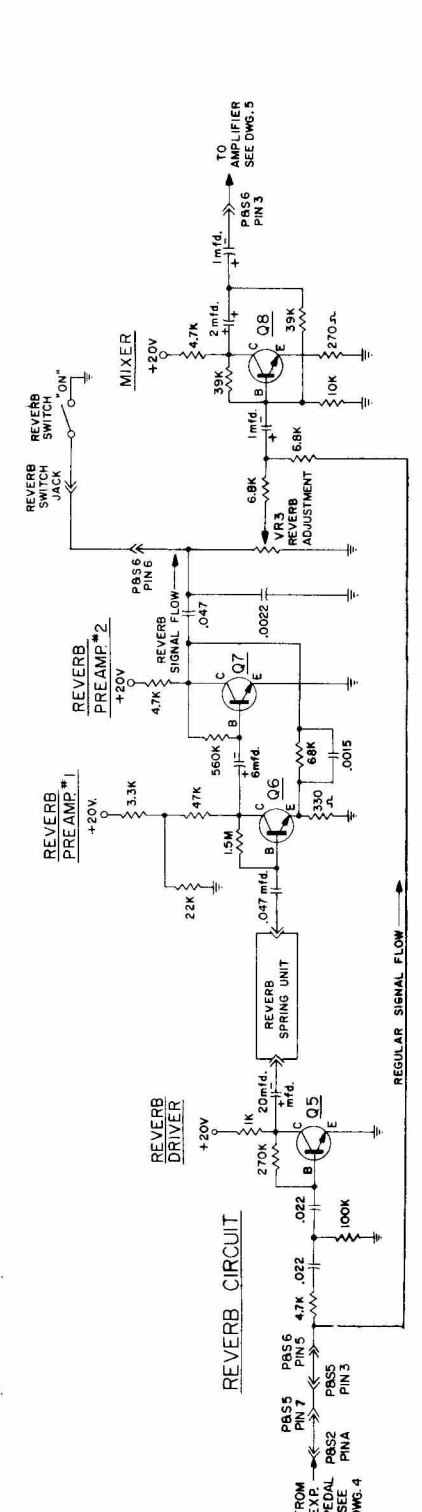
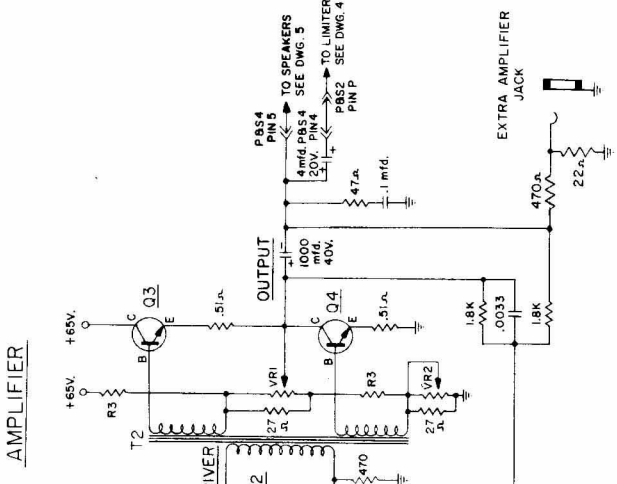
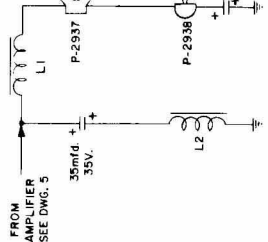
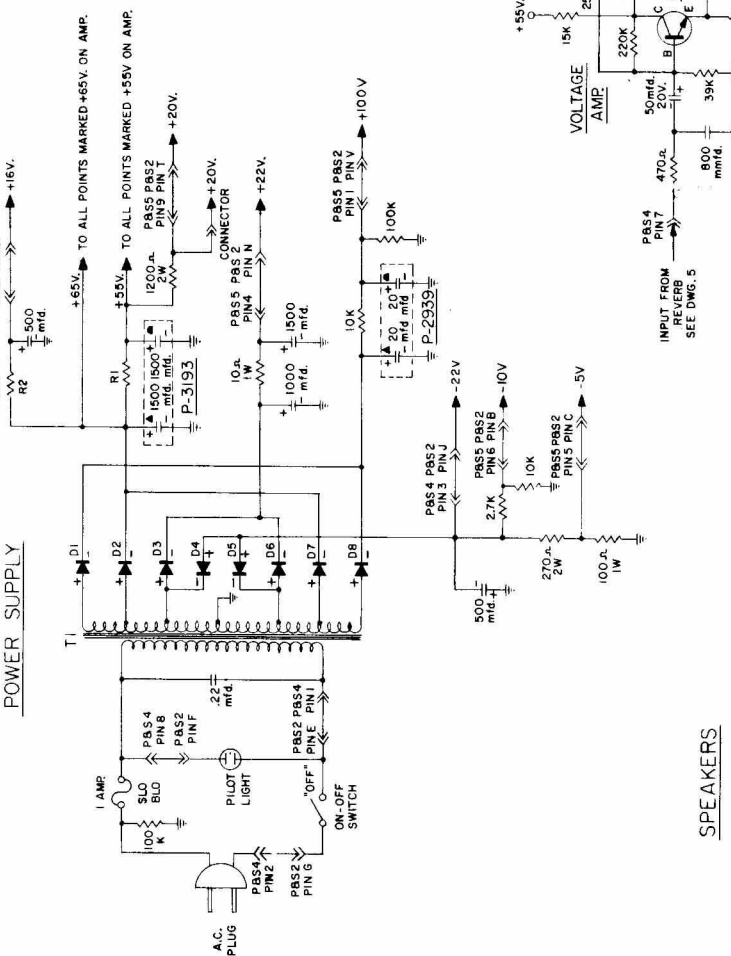


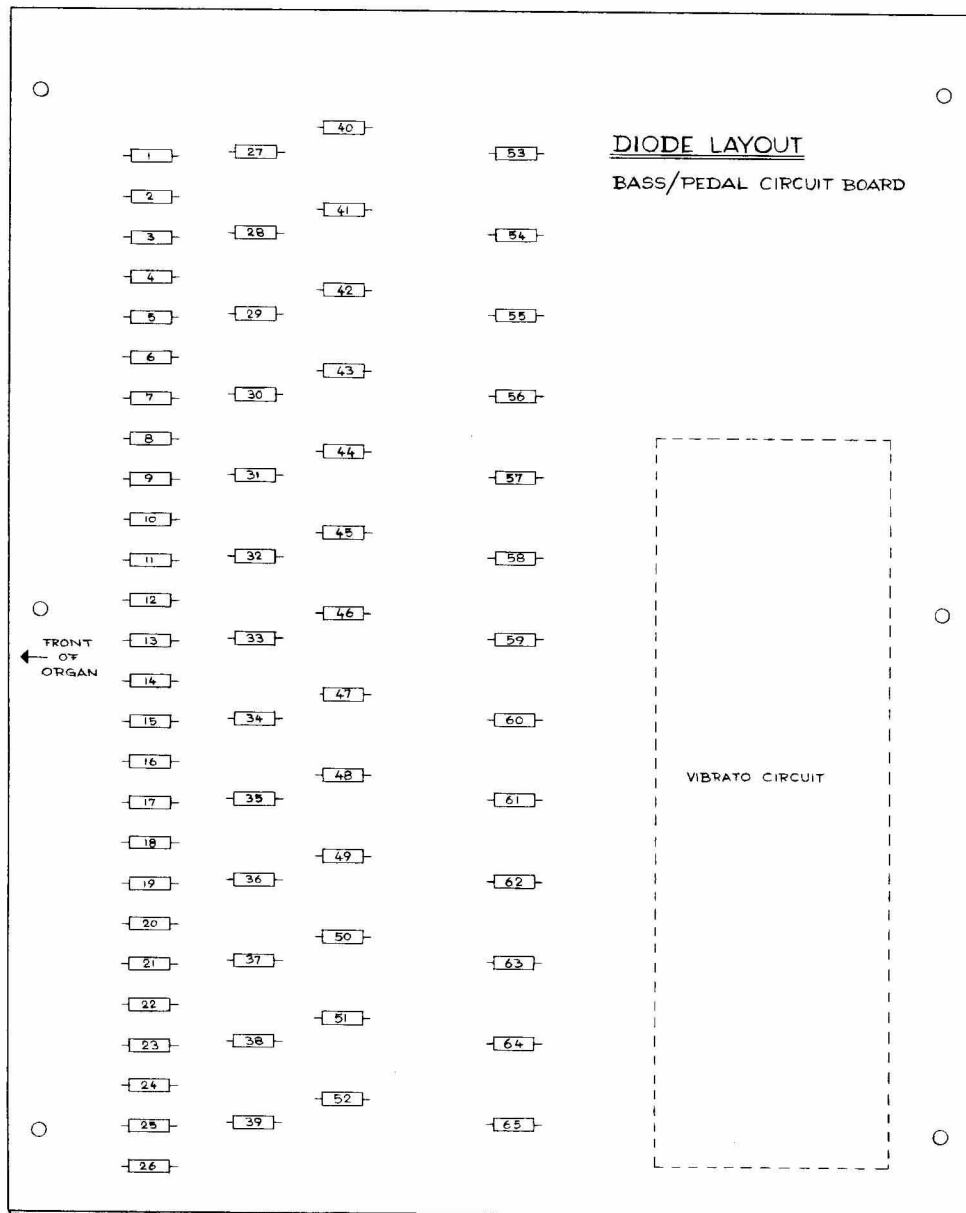
**QUALITY CONTROL**  
 DWG NO. 4 MODEL G201

PLUG & SOCKET CONNECTIONS		INFORMATION	
PLUG SOCKET NO.	VOLTAGE	PLUG SOCKET NO.	VOLTAGE
1	117VAC	1	NOT USED
2	117VAC	2	GND SIGNAL GROUND
3	-22	3	AUDIO OUTPUT FROM REVERB TO AMPLIFIER
4	AUDIO	4	GND SIGNAL GROUND
5	AUDIO	5	AUDIO INPUT TO REVERB
6	AUDIO	6	AUDIO FROM EXPRESSION PEDAL TO REVERB
7	AUDIO	7	-10 TO QUALITY CONTROL & PERCUSSION
8	117VAC	8	GND CHASSIS GROUND
9	117VAC	9	117VAC FROM ON-OFF SWITCH & PILOT LIGHT
10	117VAC	10	117VAC TO ON OFF SWITCH
11	117VAC	11	117VAC TO ON OFF SWITCH
12	117VAC	12	117VAC TO PILOT LIGHT
13	117VAC	13	117VAC TO PILOT LIGHT
14	117VAC	14	117VAC TO PILOT LIGHT
15	117VAC	15	117VAC TO PILOT LIGHT
16	117VAC	16	117VAC TO PILOT LIGHT
17	117VAC	17	117VAC TO PILOT LIGHT
18	117VAC	18	117VAC TO PILOT LIGHT
19	117VAC	19	117VAC TO PILOT LIGHT
20	117VAC	20	117VAC TO PILOT LIGHT
21	117VAC	21	117VAC TO PILOT LIGHT
22	117VAC	22	117VAC TO PILOT LIGHT
23	117VAC	23	117VAC TO PILOT LIGHT
24	117VAC	24	117VAC TO PILOT LIGHT
25	117VAC	25	117VAC TO PILOT LIGHT
26	117VAC	26	117VAC TO PILOT LIGHT
27	117VAC	27	117VAC TO PILOT LIGHT
28	117VAC	28	117VAC TO PILOT LIGHT
29	117VAC	29	117VAC TO PILOT LIGHT
30	117VAC	30	117VAC TO PILOT LIGHT
31	117VAC	31	117VAC TO PILOT LIGHT
32	117VAC	32	117VAC TO PILOT LIGHT
33	117VAC	33	117VAC TO PILOT LIGHT
34	117VAC	34	117VAC TO PILOT LIGHT
35	117VAC	35	117VAC TO PILOT LIGHT
36	117VAC	36	117VAC TO PILOT LIGHT
37	117VAC	37	117VAC TO PILOT LIGHT
38	117VAC	38	117VAC TO PILOT LIGHT
39	117VAC	39	117VAC TO PILOT LIGHT
40	117VAC	40	117VAC TO PILOT LIGHT
41	117VAC	41	117VAC TO PILOT LIGHT
42	117VAC	42	117VAC TO PILOT LIGHT
43	117VAC	43	117VAC TO PILOT LIGHT
44	117VAC	44	117VAC TO PILOT LIGHT
45	117VAC	45	117VAC TO PILOT LIGHT
46	117VAC	46	117VAC TO PILOT LIGHT
47	117VAC	47	117VAC TO PILOT LIGHT
48	117VAC	48	117VAC TO PILOT LIGHT
49	117VAC	49	117VAC TO PILOT LIGHT
50	117VAC	50	117VAC TO PILOT LIGHT
51	117VAC	51	117VAC TO PILOT LIGHT
52	117VAC	52	117VAC TO PILOT LIGHT
53	117VAC	53	117VAC TO PILOT LIGHT
54	117VAC	54	117VAC TO PILOT LIGHT
55	117VAC	55	117VAC TO PILOT LIGHT
56	117VAC	56	117VAC TO PILOT LIGHT
57	117VAC	57	117VAC TO PILOT LIGHT
58	117VAC	58	117VAC TO PILOT LIGHT
59	117VAC	59	117VAC TO PILOT LIGHT
60	117VAC	60	117VAC TO PILOT LIGHT
61	117VAC	61	117VAC TO PILOT LIGHT
62	117VAC	62	117VAC TO PILOT LIGHT
63	117VAC	63	117VAC TO PILOT LIGHT
64	117VAC	64	117VAC TO PILOT LIGHT
65	117VAC	65	117VAC TO PILOT LIGHT
66	117VAC	66	117VAC TO PILOT LIGHT
67	117VAC	67	117VAC TO PILOT LIGHT
68	117VAC	68	117VAC TO PILOT LIGHT
69	117VAC	69	117VAC TO PILOT LIGHT
70	117VAC	70	117VAC TO PILOT LIGHT
71	117VAC	71	117VAC TO PILOT LIGHT
72	117VAC	72	117VAC TO PILOT LIGHT
73	117VAC	73	117VAC TO PILOT LIGHT
74	117VAC	74	117VAC TO PILOT LIGHT
75	117VAC	75	117VAC TO PILOT LIGHT
76	117VAC	76	117VAC TO PILOT LIGHT
77	117VAC	77	117VAC TO PILOT LIGHT
78	117VAC	78	117VAC TO PILOT LIGHT
79	117VAC	79	117VAC TO PILOT LIGHT
80	117VAC	80	117VAC TO PILOT LIGHT
81	117VAC	81	117VAC TO PILOT LIGHT
82	117VAC	82	117VAC TO PILOT LIGHT
83	117VAC	83	117VAC TO PILOT LIGHT
84	117VAC	84	117VAC TO PILOT LIGHT
85	117VAC	85	117VAC TO PILOT LIGHT
86	117VAC	86	117VAC TO PILOT LIGHT
87	117VAC	87	117VAC TO PILOT LIGHT
88	117VAC	88	117VAC TO PILOT LIGHT
89	117VAC	89	117VAC TO PILOT LIGHT
90	117VAC	90	117VAC TO PILOT LIGHT
91	117VAC	91	117VAC TO PILOT LIGHT
92	117VAC	92	117VAC TO PILOT LIGHT
93	117VAC	93	117VAC TO PILOT LIGHT
94	117VAC	94	117VAC TO PILOT LIGHT
95	117VAC	95	117VAC TO PILOT LIGHT
96	117VAC	96	117VAC TO PILOT LIGHT
97	117VAC	97	117VAC TO PILOT LIGHT
98	117VAC	98	117VAC TO PILOT LIGHT
99	117VAC	99	117VAC TO PILOT LIGHT
100	117VAC	100	117VAC TO PILOT LIGHT

- NOTE:
1. D18 D8 P-2440-2
  2. D38 D7 P-2440-1
  3. D5 D4 D56 D6 P-2440
  4. R1 P-6811 35  $\Omega$
  5. R2 P-8667-1
  6. T1 P-2254 T2 P-2951
  7. R3 (2) 600  $\Omega$  RESISTORS IN ONE P-6811-56
  8. L1 P-2918 L2 P-2917
  9. O1 P-8393 O2 P-8890 Q3 R4 Q4 P-3139
  10. O5 O7 O8 P-8393 O6 P-2298
  11. VR1 VR2 P-8863-3 60  $\Omega$
  12. VR3 P-3306-2 100K
  13. R4 P-6811-60 340  $\Omega$

POWER SUPPLY/AMPLIFIER  
SPEAKERS & REVERB  
DWG NO. 5  
MODEL G201

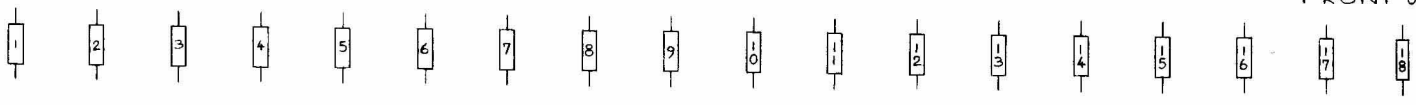




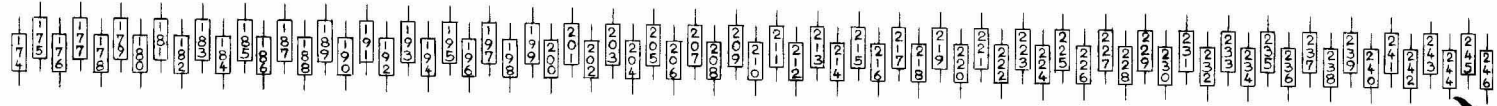
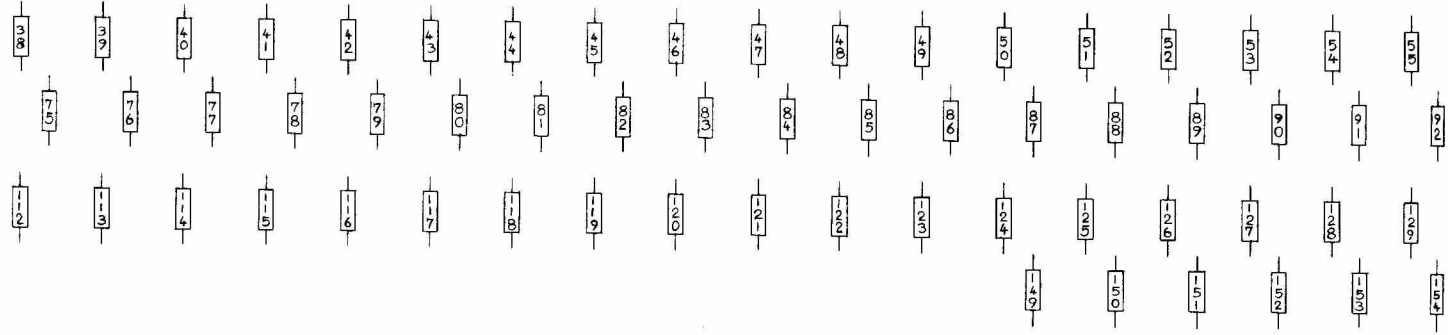
DIODES KEYED			
PEDAL & BASS	8' CONTENT	4' CONTENT	SUSTAIN CONTROL
C <sub>1</sub>	1 & 40	2 & 27	53
C <sup>#</sup>	3 & 41	4 & 28	54
D	5 & 42	6 & 29	55
D <sup>#</sup>	7 & 43	8 & 30	56
E	9 & 44	10 & 31	57
F	11 & 45	12 & 32	58
F <sup>#</sup>	13 & 46	14 & 33	59
G	15 & 47	16 & 34	60
G <sup>#</sup>	17 & 48	18 & 35	61
A	19 & 49	20 & 36	62
A <sup>#</sup>	21 & 50	22 & 37	63
B	23 & 51	24 & 38	64
C <sub>2</sub>	25 & 52	26 & 39	65



FRONT OF

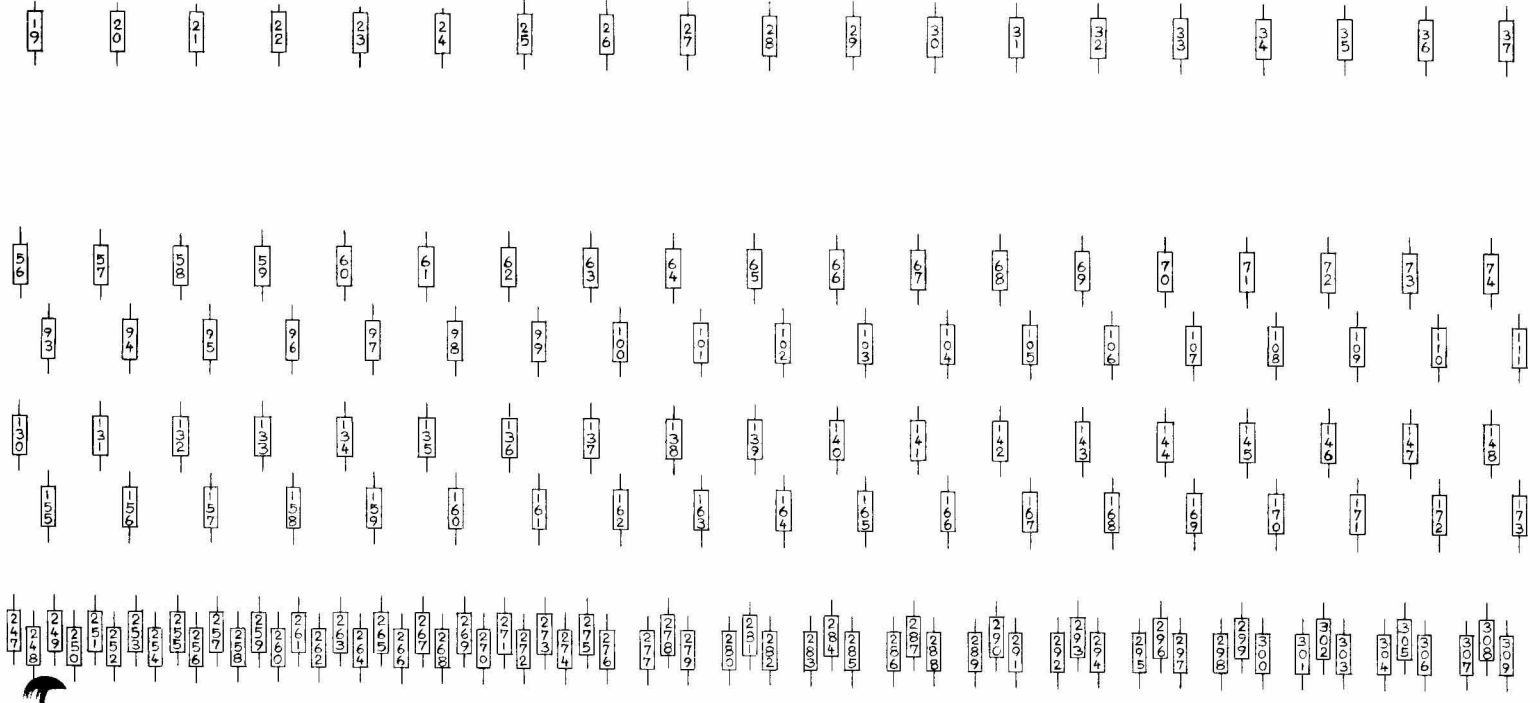


**DIODE LAYOUT**  
DIODE KEYING CIRCUIT BOARD

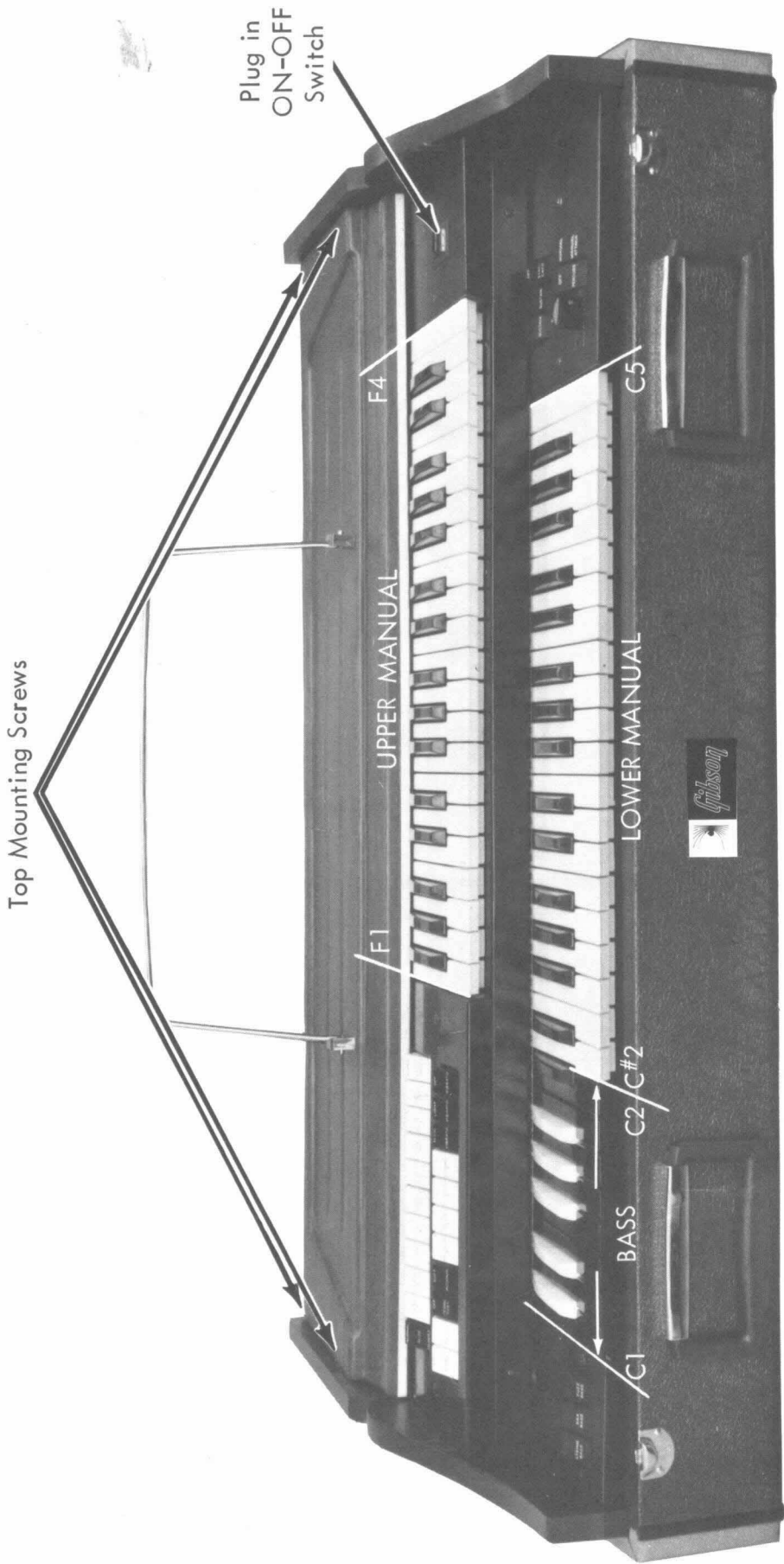


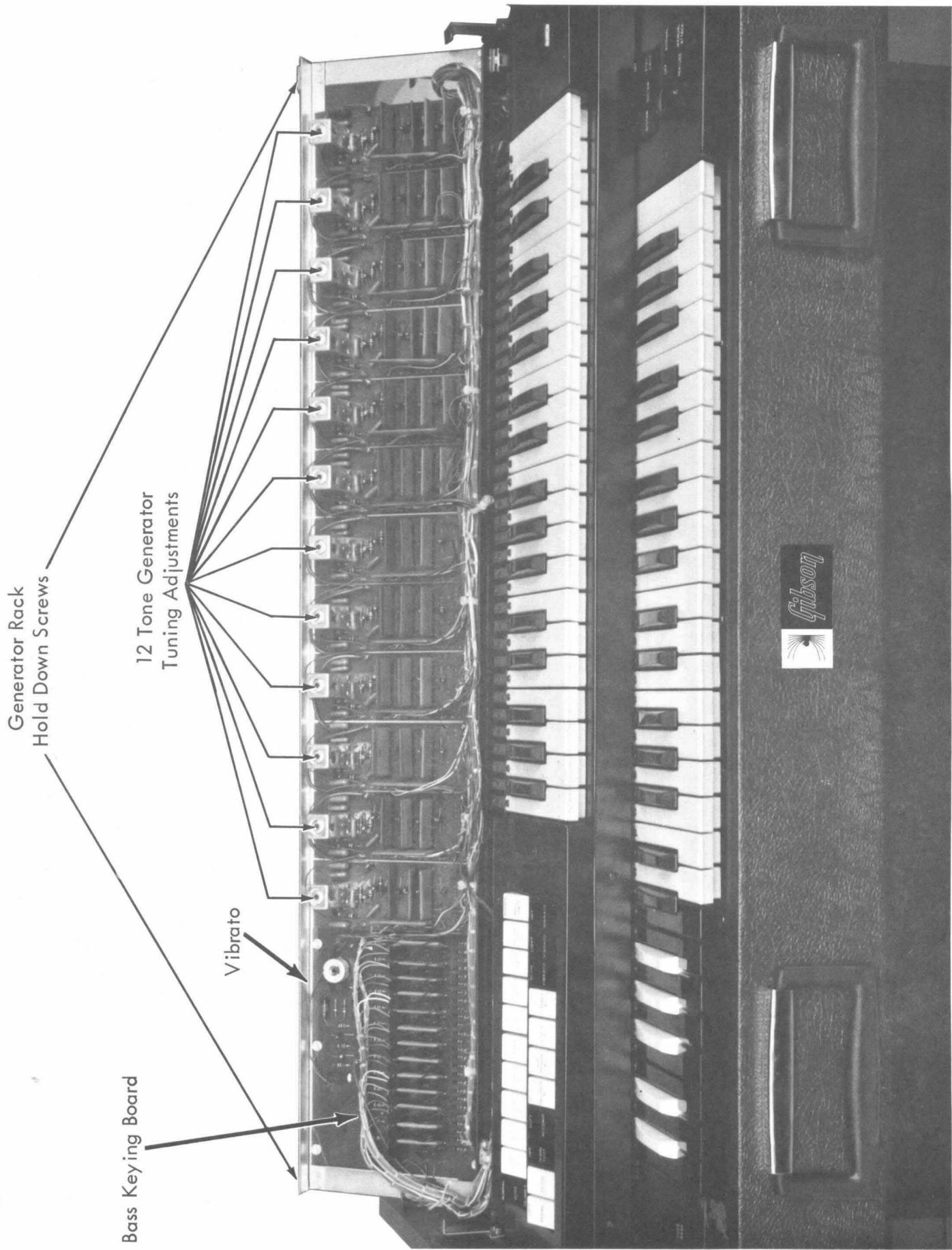
DIODES KEYED					
KEY	16'	8'	4'	2 <sup>2</sup> / <sub>3</sub> '	STACCATO
F <sub>1</sub>	309 & 111	308 & 173	271 & 148	249 & 74	37
F <sub>1</sub> <sup>#</sup>	306 & 110	305 & 172	268 & 147	245 & 73	36
G <sub>1</sub>	303 & 109	302 & 171	265 & 146	241 & 72	35
G <sub>1</sub> <sup>#</sup>	300 & 108	299 & 170	262 & 145	237 & 71	34
A <sub>1</sub>	297 & 107	296 & 169	259 & 144	233 & 70	33
A <sub>1</sub> <sup>#</sup>	294 & 106	293 & 168	256 & 143	229 & 69	32
B <sub>1</sub>	291 & 105	290 & 167	253 & 142	225 & 68	31
C <sub>1</sub>	288 & 104	287 & 166	251 & 141	220 & 67	30
C <sub>1</sub> <sup>#</sup>	286 & 103	284 & 165	247 & 140	215 & 66	29
D <sub>1</sub>	282 & 102	281 & 164	243 & 139	210 & 65	28
D <sub>1</sub> <sup>#</sup>	279 & 101	278 & 163	239 & 138	205 & 64	27
E <sub>1</sub>	276 & 100	275 & 162	235 & 137	200 & 63	26
F <sub>2</sub>	307 & 99	272 & 161	231 & 136	195 & 62	25
F <sub>2</sub> <sup>#</sup>	304 & 98	269 & 160	227 & 135	191 & 61	24
G <sub>2</sub>	301 & 97	266 & 159	222 & 134	187 & 60	23
G <sub>2</sub> <sup>#</sup>	298 & 96	263 & 158	217 & 133	183 & 59	22
A <sub>2</sub>	295 & 95	260 & 157	212 & 132	179 & 58	21
A <sub>2</sub> <sup>#</sup>	292 & 94	257 & 156	207 & 131	175 & 57	20
B <sub>2</sub>	289 & 93	254 & 155	202 & 130	228 & 56	19

ORGAN



DIODES KEYED					
KEY	16'	8'	4'	2 2/3'	STACCATO
C <sub>2</sub>	286 & 92	250 & 154	197 & 129	223 & 55	18
C# <sub>2</sub>	283 & 91	246 & 153	192 & 128	218 & 54	17
D <sub>2</sub>	280 & 90	242 & 152	188 & 127	213 & 53	16
D# <sub>2</sub>	277 & 89	238 & 151	184 & 126	208 & 52	15
E <sub>2</sub>	274 & 88	234 & 150	180 & 125	203 & 51	14
F <sub>3</sub>	273 & 87	230 & 149	176 & 124	198 & 50	13
F# <sub>3</sub>	270 & 86	224 & 123	224 & 123	193 & 49	12
G <sub>3</sub>	267 & 85	219 & 122	219 & 122	189 & 48	11
G# <sub>3</sub>	264 & 84	214 & 121	214 & 121	185 & 47	10
A <sub>3</sub>	261 & 83	209 & 120	209 & 120	181 & 46	9
A# <sub>3</sub>	258 & 82	204 & 119	204 & 119	177 & 45	8
B <sub>3</sub>	255 & 81	199 & 118	199 & 118	226 & 44	7
C <sub>3</sub>	252 & 80	194 & 117	194 & 117	221 & 43	6
C# <sub>3</sub>	248 & 79	190 & 116	190 & 116	216 & 42	5
D <sub>3</sub>	244 & 78	186 & 115	186 & 115	211 & 41	4
D# <sub>3</sub>	240 & 77	182 & 114	182 & 114	206 & 40	3
E <sub>3</sub>	236 & 76	178 & 113	178 & 113	201 & 39	2
F <sub>4</sub>	232 & 75	174 & 112	174 & 112	196 & 38	1



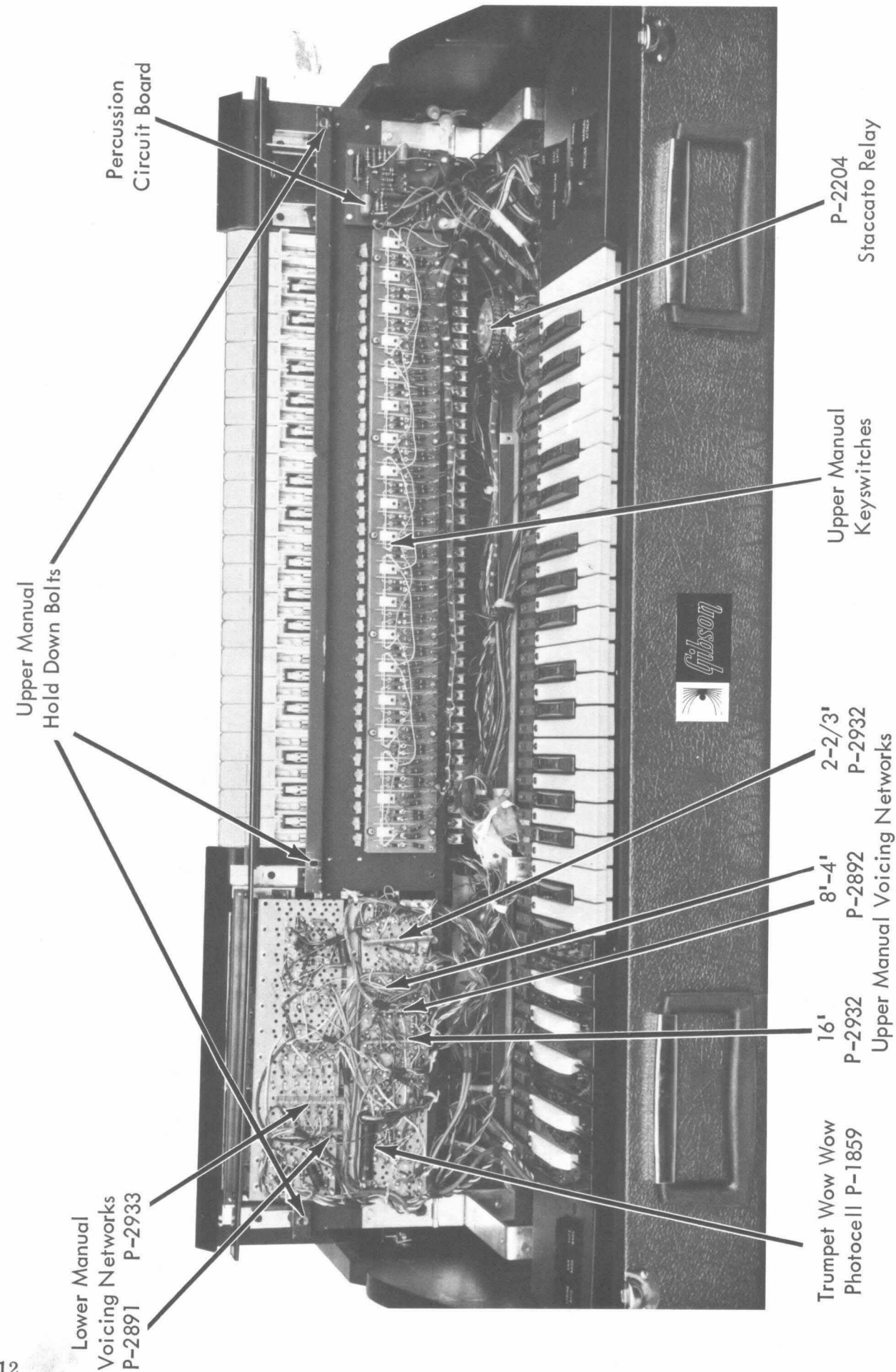


Generator Rack  
Hold Down Screws

12 Tone Generator  
Tuning Adjustments

Vibrato

Bass Keying Board



Percussion  
Circuit Board

Upper Manual  
Hold Down Bolts

Lower Manual  
Voicing Networks  
P-2891 P-2933

Trumpet Wow Wow  
Photoce II P-1859

16'  
P-2932

8'-4'  
P-2892

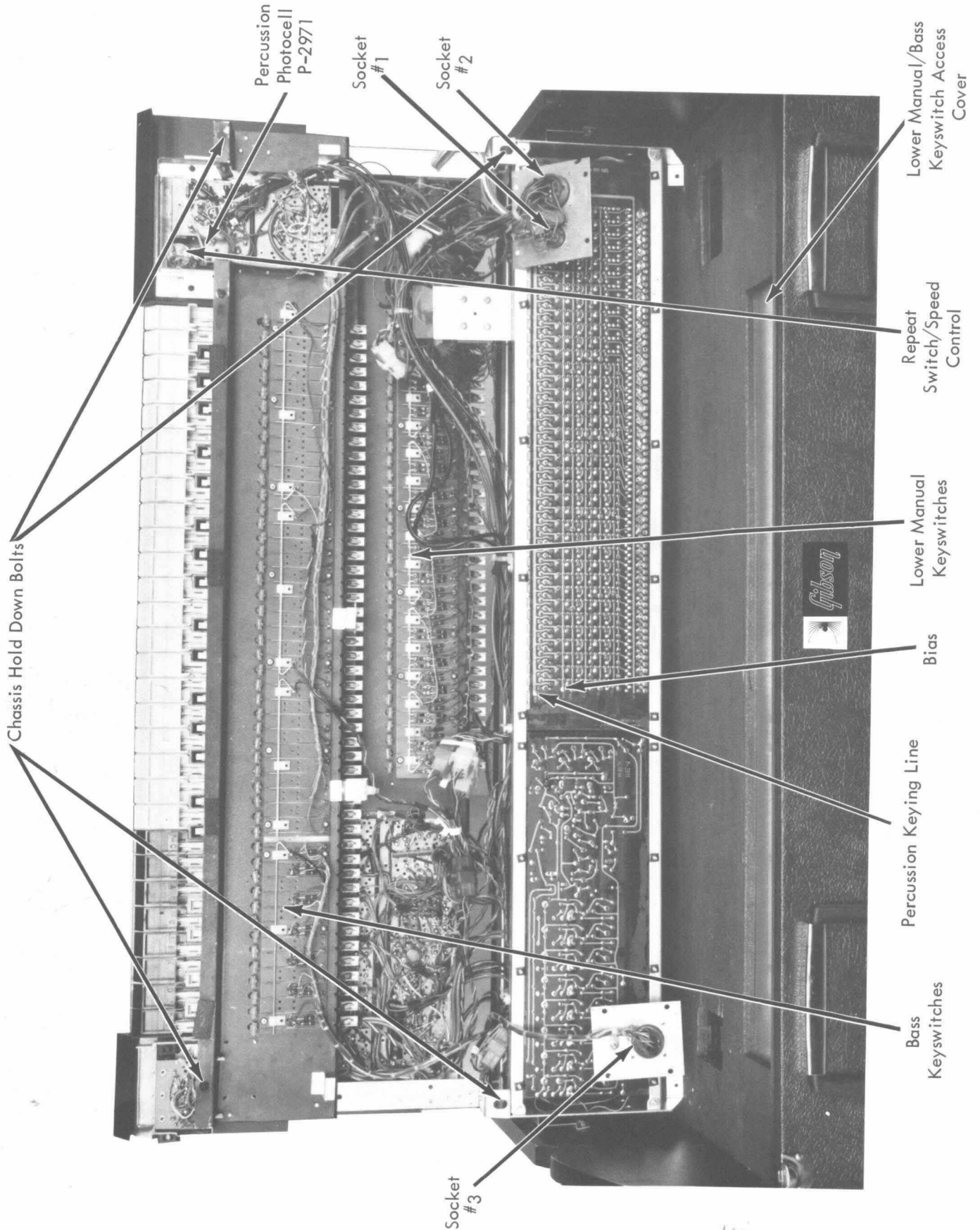
2-2/3'  
P-2932

Upper Manual Voicing Networks

Upper Manual  
Keyswitches

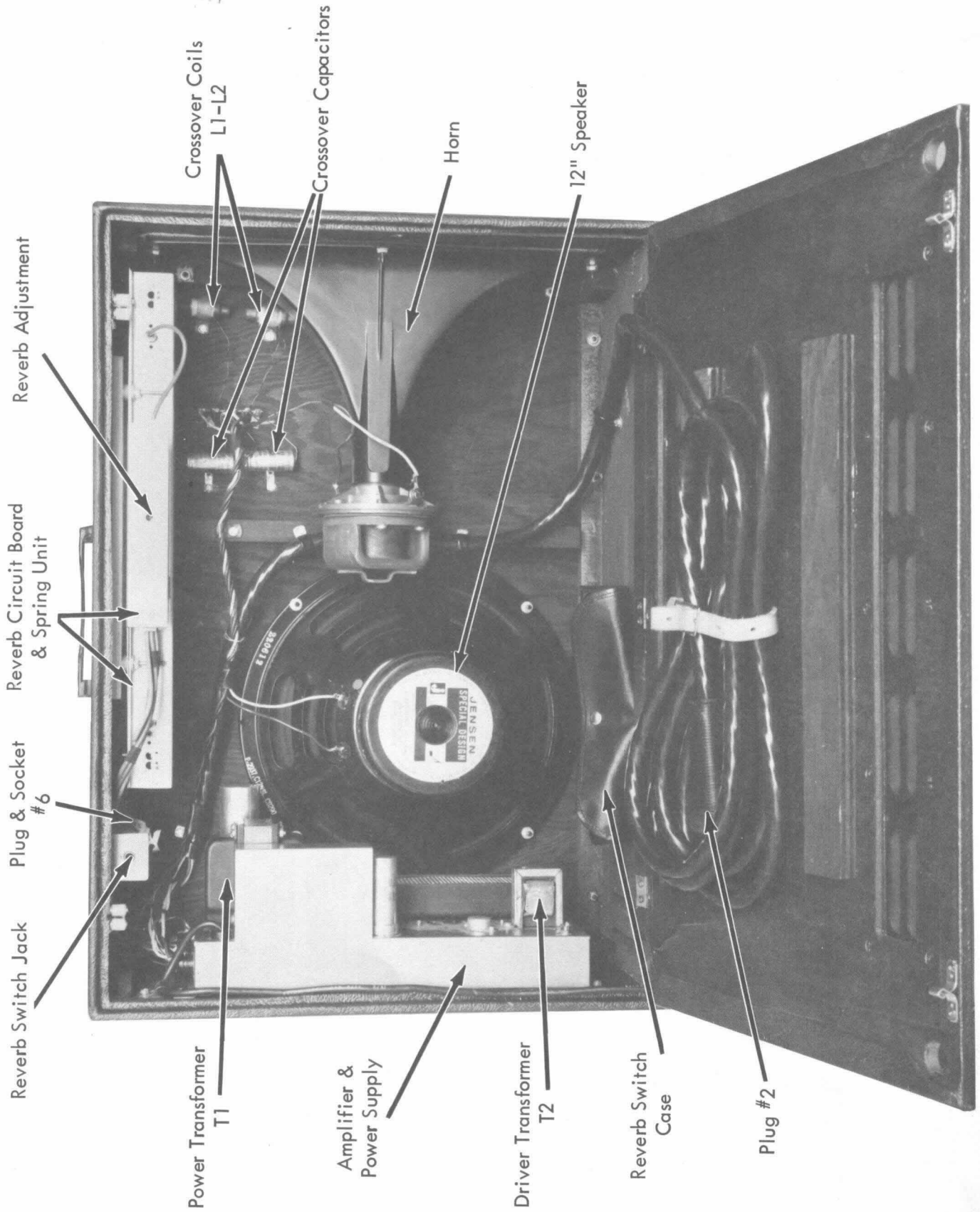
P-2204  
Staccato Relay

Note:  
To Gain Access to the Upper Manual Hold Down Bolts  
Remove the Upper Manual Left and Right Check Blocks.

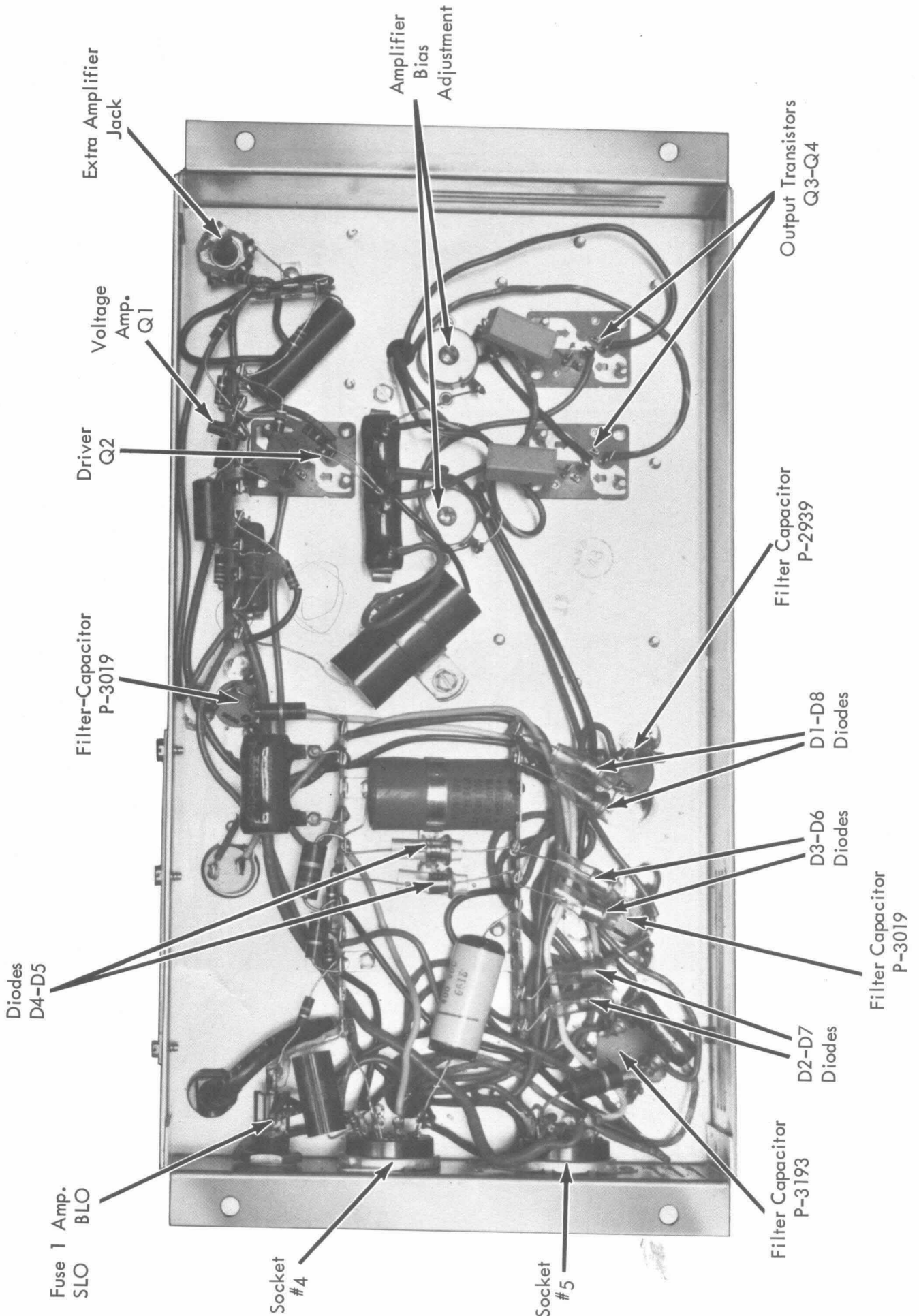


Note: To Gain Access to the Front Chassis Hold Down Bolts  
 Remove the Lower Manual Left and Right Check Blocks.

Amplifier & Speaker Case

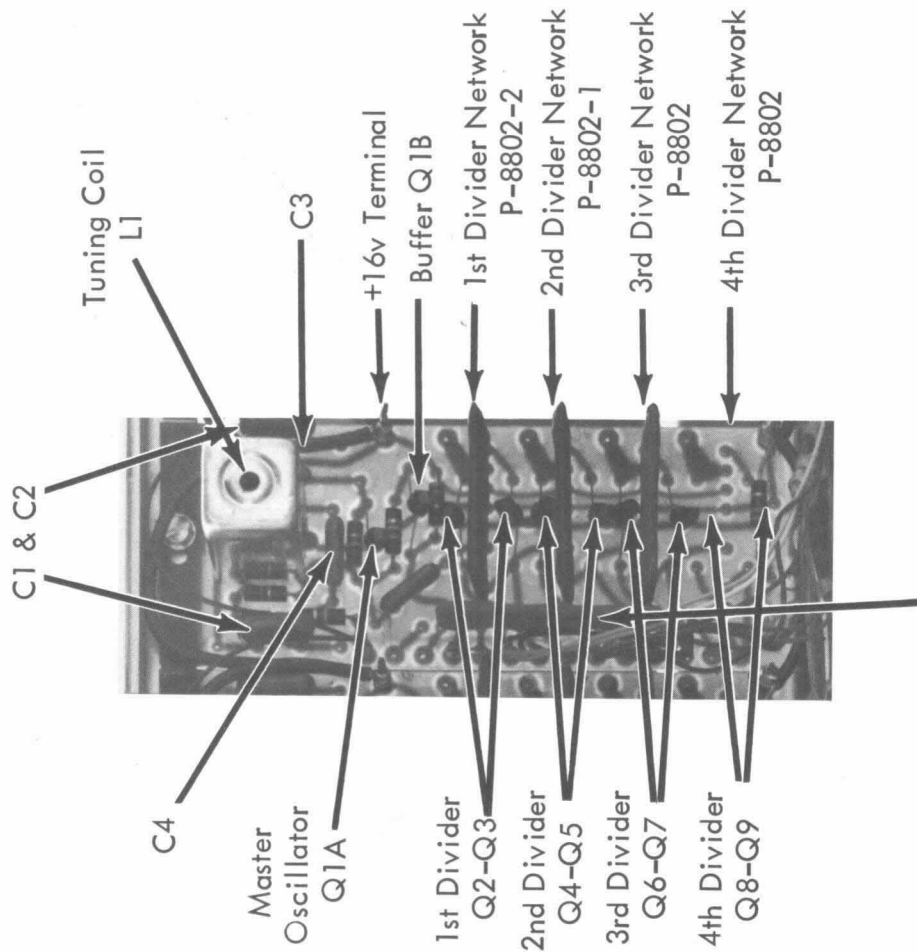


Amplifier & Power Supply





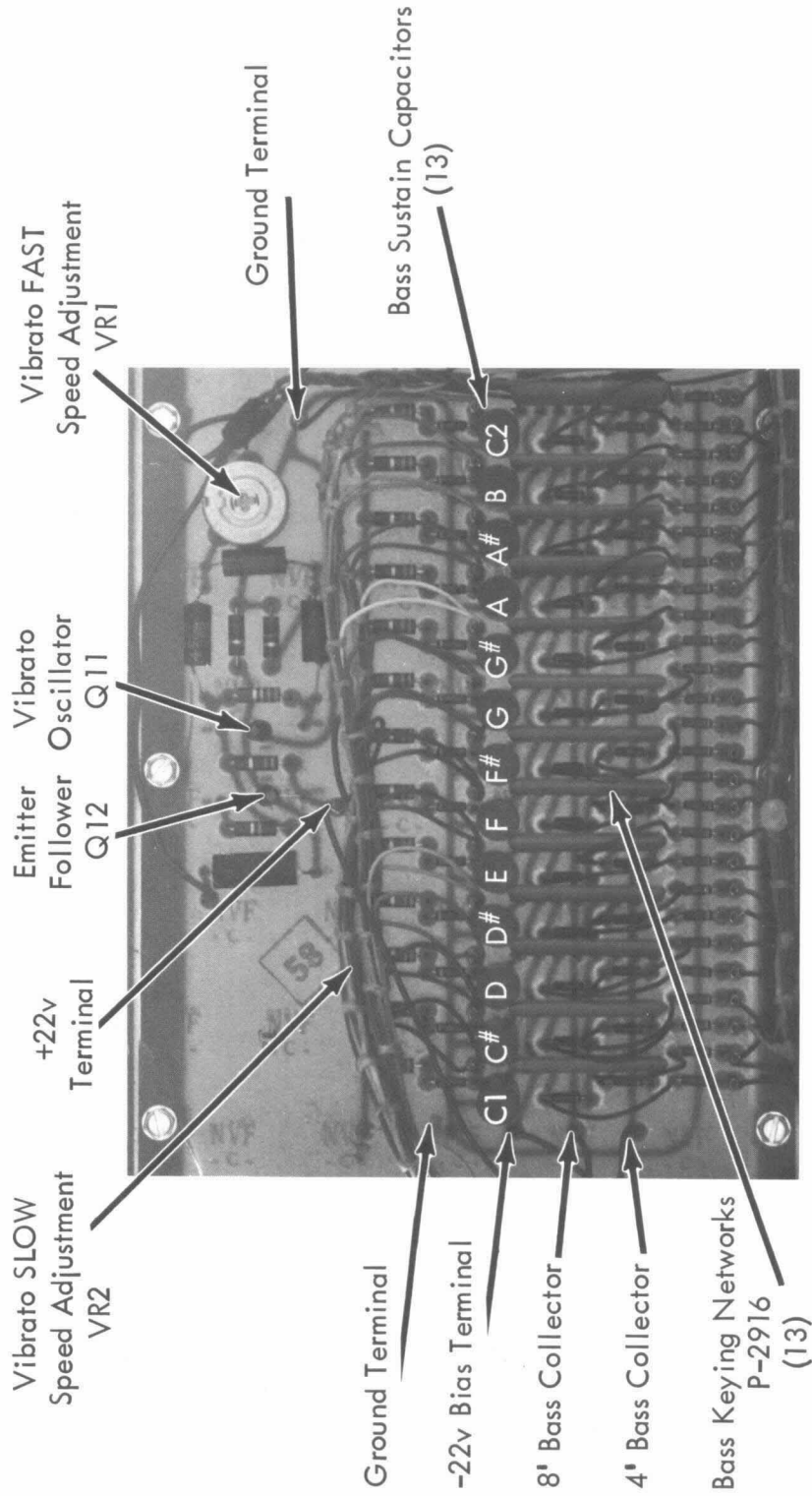
Tone Generator Board



Note:  
4th Divider used on C-F  
tone generators only.

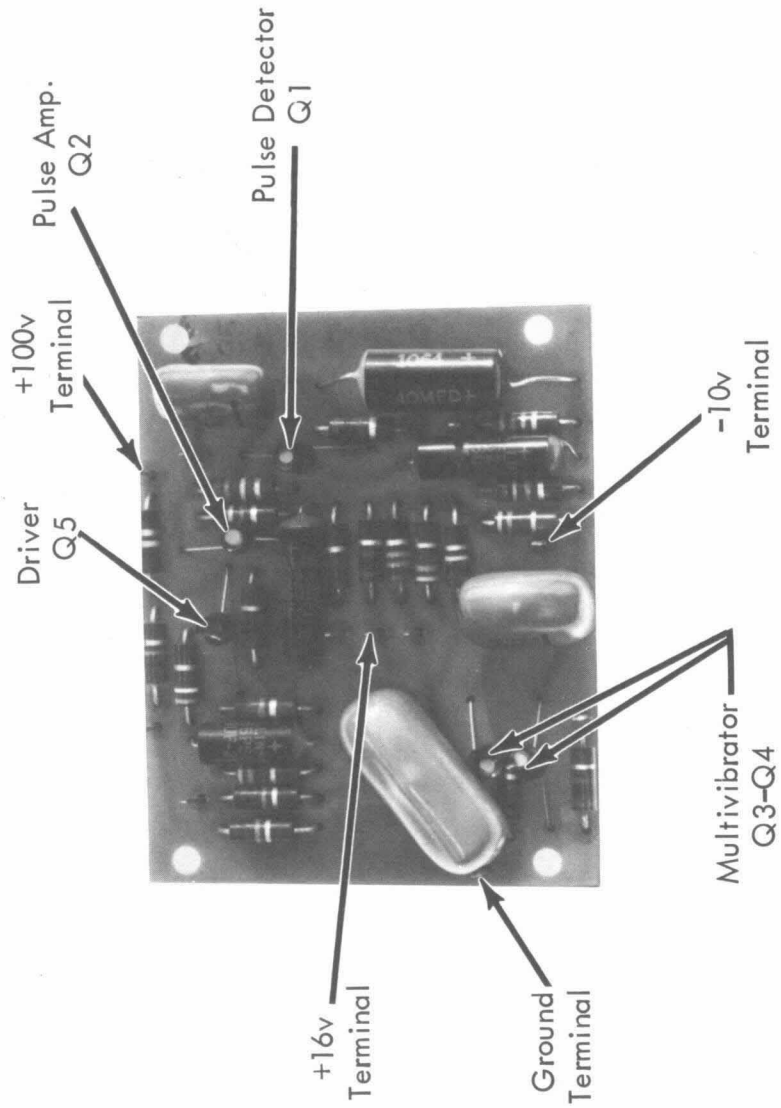
Non Sustain  
Network  
P-2876 or P-2877

# BASS KEYING BOARD

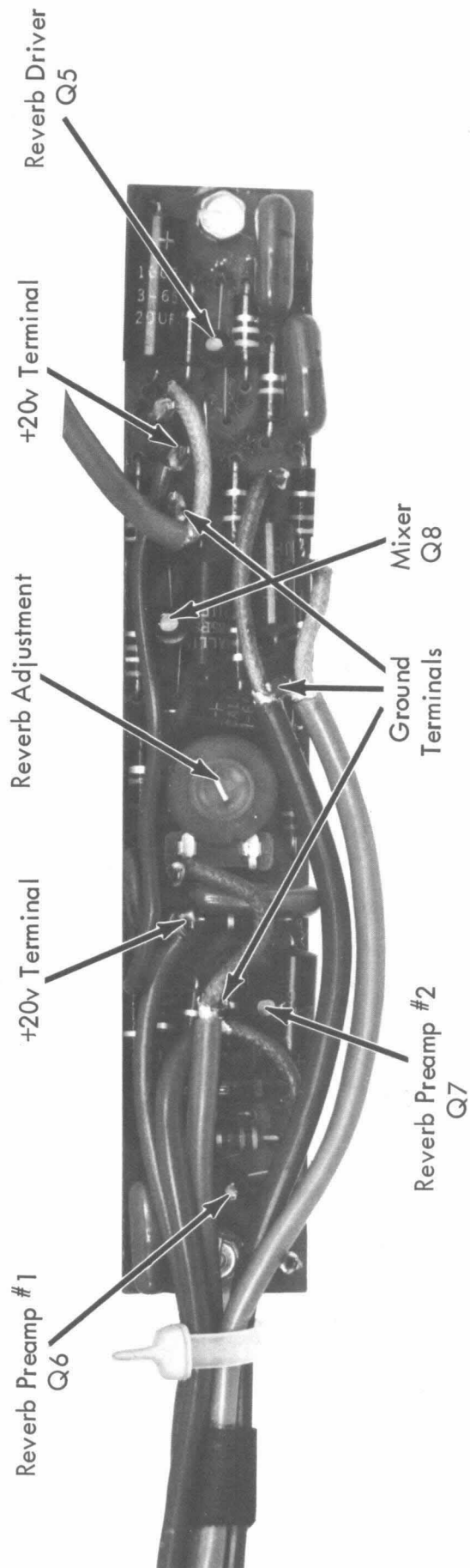


**IMPORTANT:** Adjust Vibrato slow speed before adjusting Vibrato fast speed. Q11 will not oscillate if either adjustment is extreme.

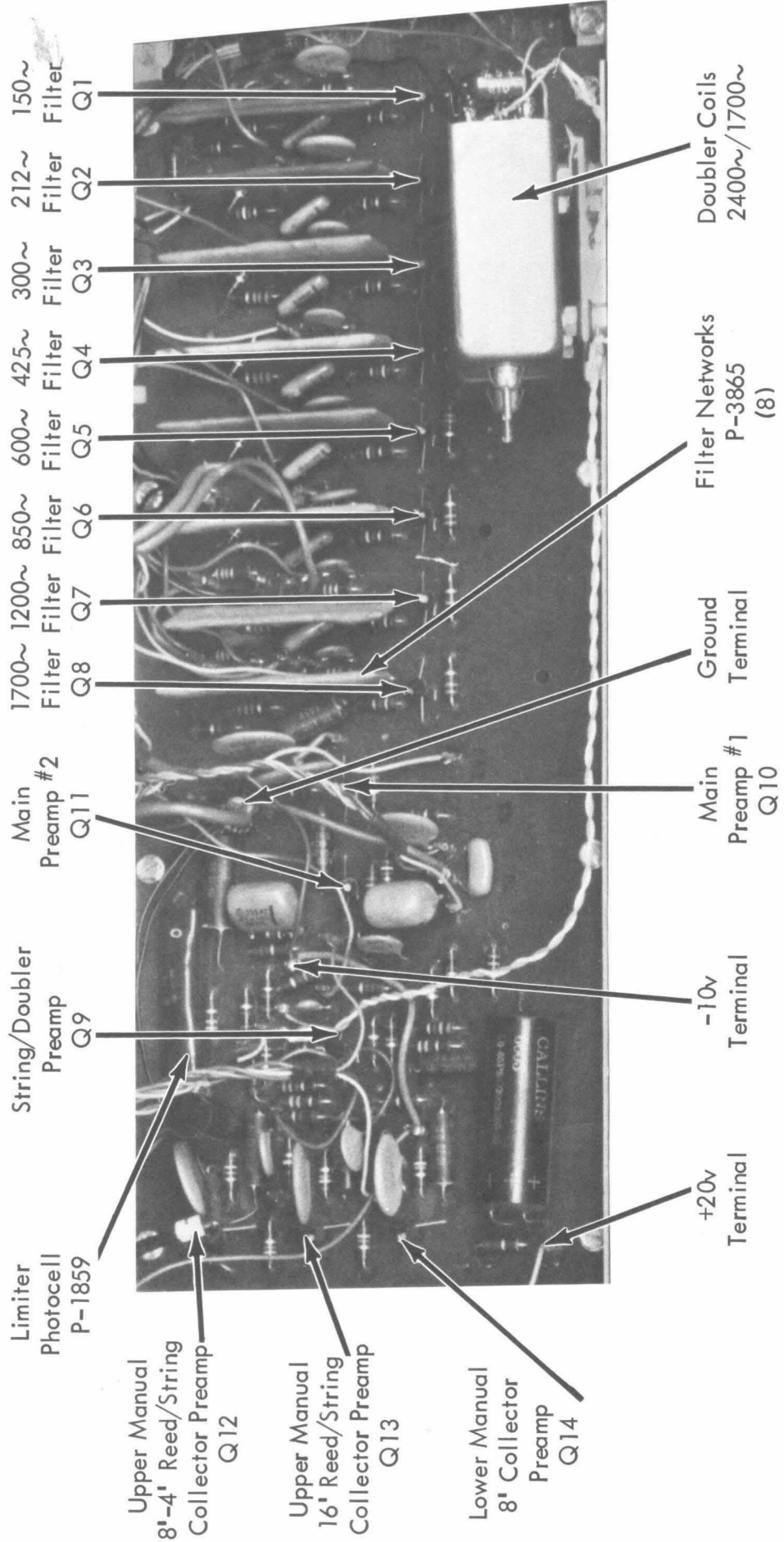
Percussion Board



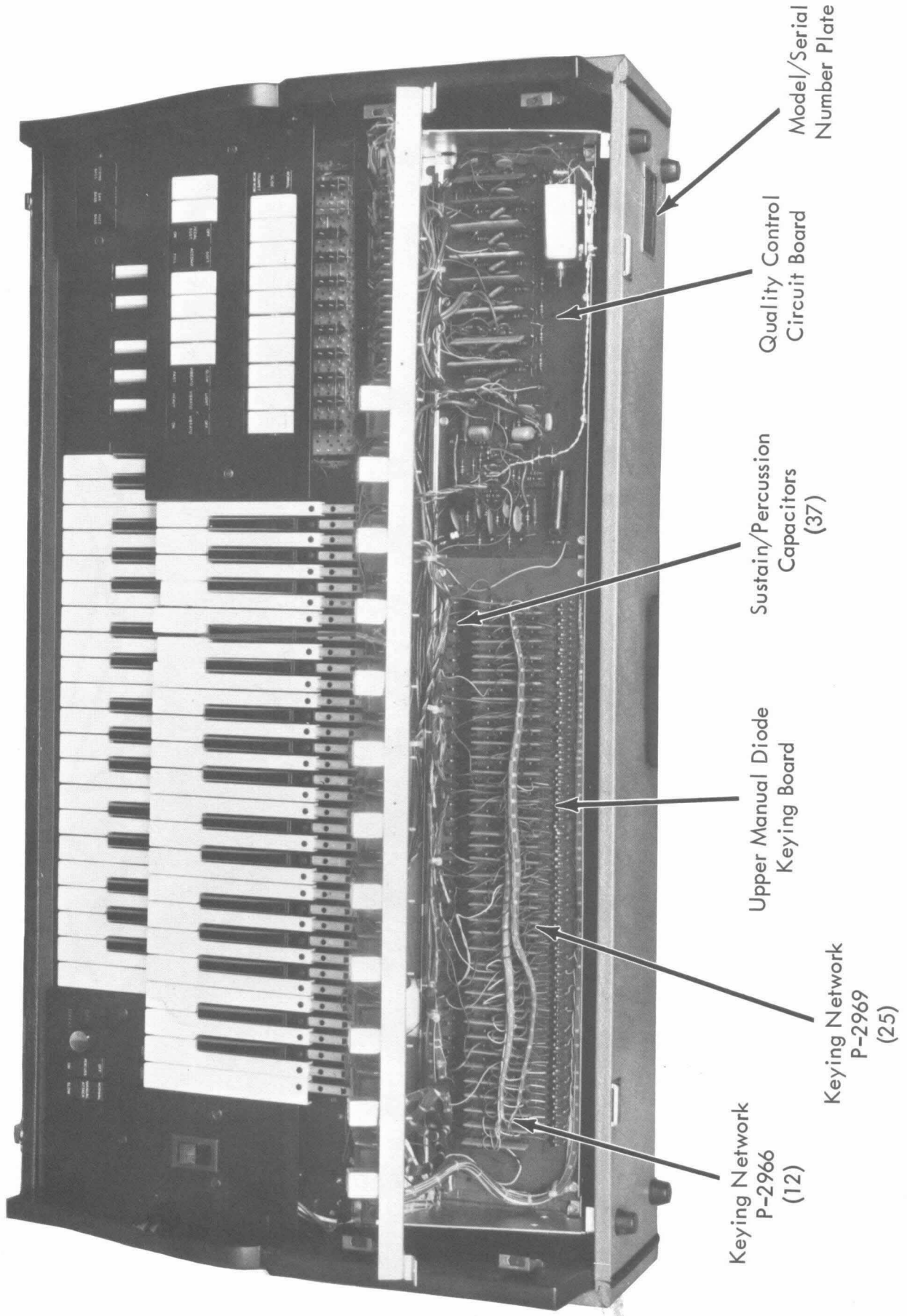
Reverb Circuit Board



Quality Control  
Circuit Board



DIODE KEYING BOARDS



Keying Network  
P-2966  
(12)

Keying Network  
P-2969  
(25)

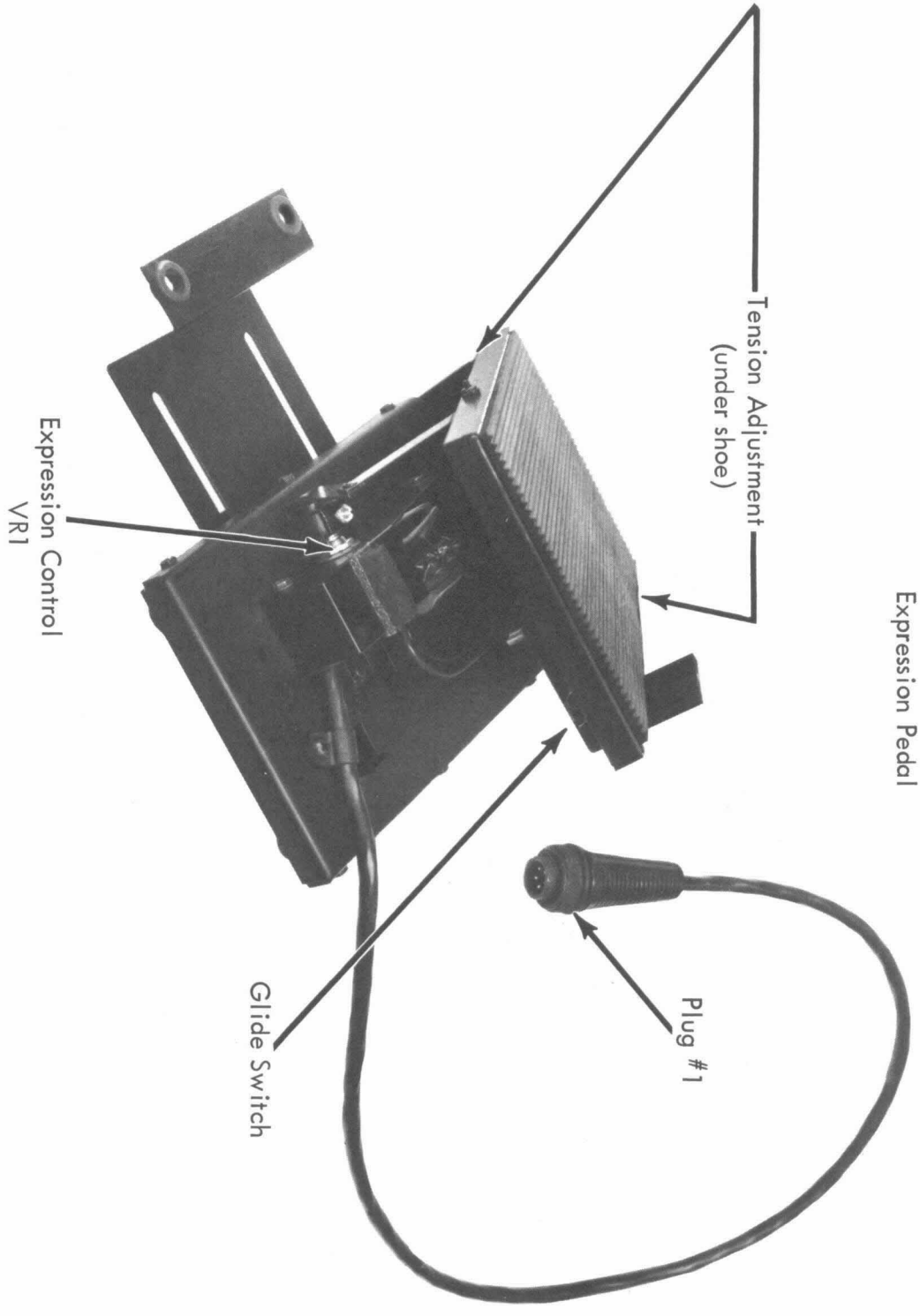
Upper Manual Diode  
Keying Board

Sustain/Percussion  
Capacitors  
(37)

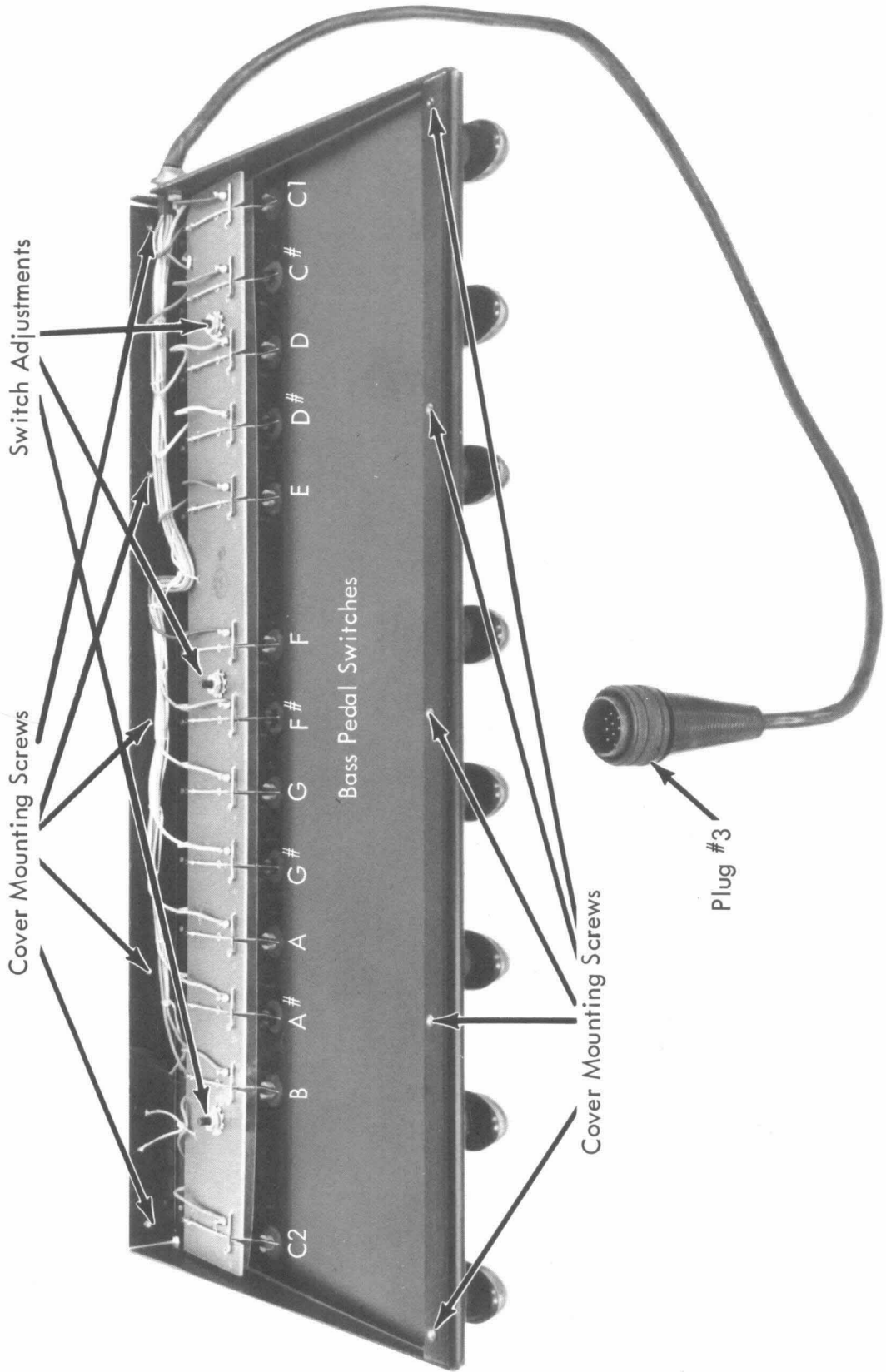
Quality Control  
Circuit Board

Model/Serial  
Number Plate


### Expression Pedal



Bass Pedal Keyboard







GIBSON, INC., 7373 NORTH CICERO, LINCOLNWOOD, ILLINOIS 60646

Printed in U.S.A.