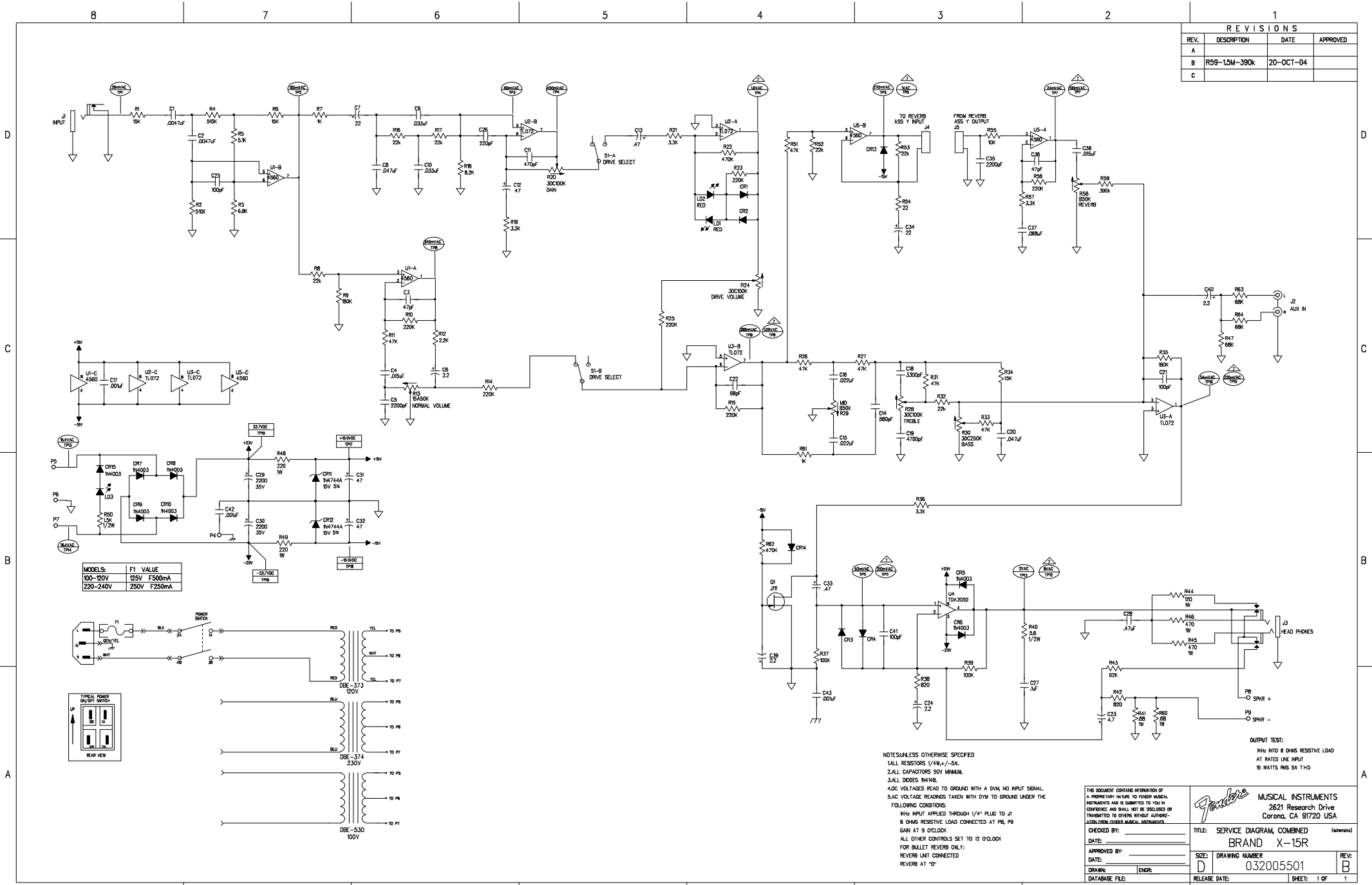
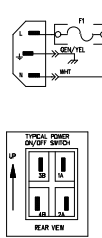


REVISIONS			
REV.	DESCRIPTION	DATE	APPROVED
A			
B	R59-15M-390K	20-OCT-04	
C			



MODEL S	F1 VALUE
100-120V	125V F500mA
220-240V	250V F250mA



NOTES: UNLESS OTHERWISE SPECIFIED
 1. ALL RESISTORS 1/4W, +/-5%
 2. ALL CAPACITORS 50V MINIMUM
 3. ALL DIODES 1N4148
 4. 0.01 VOLTAGES READ TO GROUND WITH A DVM, NO INPUT SIGNAL.
 5. AC VOLTAGE READINGS TAKEN WITH DVM TO GROUND UNDER THE FOLLOWING CONDITIONS:
 1KHz INPUT APPLIED THROUGH 1/4" PLUG TO J1
 B OHMS RESISTIVE LOAD CONNECTED AT P8, P9
 GAIN AT 9 O'CLOCK
 ALL OTHER CONTROLS SET TO 12 O'CLOCK
 FOR BULLET REVERB ONLY:
 REVERB UNIT CONNECTED
 REVERB AT '0'

OUTPUT TEST:
 8 Ohm INTO 8 OHMS RESISTIVE LOAD
 AT RATED LINE INPUT
 15 WATTS RMS SX 1 HD

THE DOCUMENT CONTAINS INFORMATION OF A PROPRIETARY NATURE TO FENDER MUSICAL INSTRUMENTS AND IS SUBMITTED TO YOU IN CONFIDENCE AND SHALL NOT BE DISCLOSED OR TRANSMITTED TO OTHERS WITHOUT AUTHORIZATION FROM FENDER MUSICAL INSTRUMENTS.		Fender MUSICAL INSTRUMENTS 2621 Research Drive Corona, CA 91720 USA	
CHECKED BY:	DATE:	TITLE: SERVICE DIAGRAM, COMBINED (continued)	REV: B
APPROVED BY:	DATE:	SIZE: D	DRAWING NUMBER: 032005501
DRAWN:	ENGR:	RELEASE DATE:	SHEET: 1 OF 1
DATABASE FILE:			