




Ludwig

Ludwig Drum Company
P.O. Box 310, Elkhart, IN 46515
www.ludwig-drums.com

DRUMS & HARDWARE



FOREWORD BY WILLIAM F. LUDWIG III

100 years of Ludwig Drums. It seems so surreal to me, but then it's always been a part of my life. As I look back, I find it hard to believe that so much has changed and yet so much has remained the same. My grandfather, William F. Ludwig Sr., started this company to make new and innovative equipment for himself -an active, gigging drummer. He always insisted on the best raw materials to make top-quality products, but more importantly, he insisted on quality people to make percussion instruments that SOUND the way he wanted HIS drums to sound!

My father carried that commitment forward and as one that got to see it all and be part of it behind-the-scenes, I can safely say that anything that bore our family name had to be something a drummer could play with pride.

As the saying goes, the musicians have changed, but the song remains the same. As we move into Ludwig's second century, I am amazed at the lengths that Ludwig continues to go in upholding my family's commitment to the highest standards in the percussion industry. As you will see in the pages of this catalog, Ludwig is celebrating this important milestone in the history of percussion in grand style. The 3-ply concepts established in the company's infancy are taken to new heights with Legacy Exotic, commemorative pieces like the Gold Triumphant and Black Beauty are crafted more exquisitely than ever and the "Ludwig Sound" is enlarged even further with new horizons in shell technology.

We are a family of drummers dedicated to serving the needs of every player. As the torch is passed to the next generation, our Legacy rolls forward with my family's ideals intact. Today's Ludwig Team is totally committed to maintaining the standards my family set to establish Ludwig as the first name in quality and performance.

Now, as we celebrate this unique moment in drum history, I hope you will join me in saluting our tradition of excellence.

BE A LEGEND. JOIN THE FAMILY.

William Ludwig III



LEGACY EXOTIC

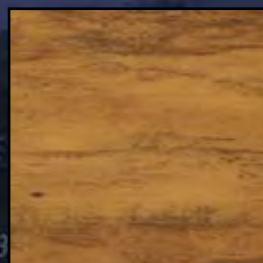
SERIES DRUMS

TOMORROW'S VINTAGE, TODAY.



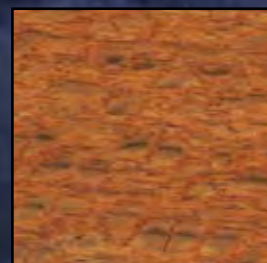
SHELL: Exotic Veneer over 1/32" Maple Outer Ply, 1/8" American Poplar Core Ply, 1/16" Maple Inner Ply, 1/8" Solid Maple Reinforcement Rings.

After locating several felled logs from across the globe, three exotic hardwoods made the final cut for their visual elegance and tonal contribution to the Legacy shell:



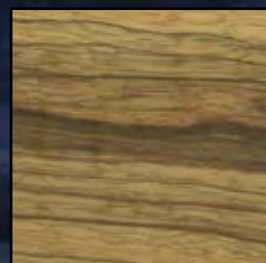
Sumauma - A dark Amazon hardwood with a deep horizontal grain and marbled textural figuring to compliment its complex visual variation.

Finishes include Redburst, Supernatural (natural wood with a hint of dark at each end), Natural Gloss and Black/Natural Burst.



Lacewood - A lighter Australian hardwood with a complex, shifting quilted nature. The heavy grain in Lacewood is likened to fish scales, in that it appears to "move" when light catches it.

Finishes include Natural Gloss, Natural/Green "Gator-fade", Honeyburst and Deep Mahogany/Red-Natural Burst.



Black Limba - The most complex of the Legacy veneers, African Black Limba's vertical grain is offset by its vibrant diagonal quilting pattern.

Finish options include Natural/Mahogany Burst, Gloss Natural, Yellow-to-Red "Tequilla Sunrise", and Deep Red Reverse-Burst.



Legacy Exotic Sumauma in Redburst (A3) Lacquer*

Shown: 20x22" bass drum (LLB402XXA3), 6.5x14" snare drum (LLS464XXA3), 7x10" tom with Vibra-Band (LLT470XXA3WR), 8x12" tom with Vibra-Band (LLT482XXA3WR), 12x14" floor tom (LLF424XXA3) and 14x16" floor tom (LLF446XXA3)



The stunning appearance of these inaugural Legacy Exotic kits will be enhanced with the addition of the 100th Anniversary badge on all kits manufactured in 2009. Available in an expanded array of Legacy component sizes and in limited supply, Legacy Exotic is the perfect addition to Ludwig's illustrious vintage tradition.

LEGACY CLASSIC

SERIES DRUMS

A TRUE AMERICAN CLASSIC



SHELL: Vintage-style wrap over 1/16" Maple Outer Ply, 1/8" American Poplar Core Ply, 1/16" Maple Inner Ply, 1/4" Solid Maple Reinforcement Rings.

Incorporating many of the same methods used throughout Ludwig's long and illustrious history, the exclusive Legacy Classic shells are made from choice cuts of hand-selected North American hardwoods. A core ply of premium Poplar yields warmth and resonance while cross-laminated inner and outer plies of Maple deliver power and clarity. This proven design is then augmented with 1/4" single-ply Maple reinforcement hoops and rounded classic-cut bearing edges for thundering lows and pronounced articulation, suitable for any musical style.

Not merely a blast from the past, Legacy drums take full advantage of state-of-the-art manufacturing techniques with rigorous attention to detail. The Legacy Classic Series are now available in expanded sizes and finish options for the consummate professional.

Tradition, Craftsmanship and Visionary Excellence; these are the values at the center of Ludwig's classic legacy. With these values comes a commitment as true as the care and pride that goes into each drum, hand-crafted at Ludwig's manufacturing facility in Monroe, North Carolina.

Combining the benefits of today's most advanced manufacturing processes with the experience that comes with a century of drum making, Ludwig's Legacy Classic Series revive the distinctive sound of the world's most famous drums. These custom-built American-made drums are a modern interpretation of the legendary Ludwig shells that set the standard for popular music throughout the 20th Century.

*Legacy Classic in Silver Sparkle**

Shown: 14x22" bass drum (LLB342XX0S), 8x12" (LLT382XX0SWR), and 9x13" (LLT393XX0SWR) toms, 14x14" (LLF344XX0S) and 16x16" (LLF366XX0S) floor toms and a 5x14" (LLS354XX0S) snare drum



LIVERPOOL

The Kit That Launched **4** A Revolution

Legacy Classic Liverpool 4*

Shown: 14x22" bass drum (LLB342RC1QWC),
16x16" floor tom (LLF366XX1QWC),
9x13" tom (LLT393LM1QWC),
and 5x14" snare (LLS354XX1Q)



LEGACY CLASSIC

SERIES DRUMS

COMPONENT DRUMS

Bass Drums

Model	Size
14x18"	LLB348XX
14x20"	LLB340XX
14x22"	LLB342XX
14x24"	LLB344XX
14x26"	LLB346XX
18x22"	LLB382XX
18x24"	LLB384XX
20x22"	LLB302XX

Floor Toms

Model	Size
14x14"	LLF344XX
16x16"	LLF366XX
16x18"	LLF368XX

Toms

Model	Size
8x10"	LLT380XX_WR
8x12"	LLT382XX_WR
9x12"	LLT392XX_WR
9x13"	LLT393XX_WR
10x13"	LLT303XX_WR
10x14"	LLT304XX_WR

Snares

Model	Size
5x14"	LLS354XX
6.5x14"	LLS364XX

VINTAGE WRAPS

Legacy Classic component drums are available in an expanded array of sizes and Vintage Wrapped finishes to suit any playing style.



White Marine Pearl (0P)



Black Oyster Pearl (0O)



Champagne Sparkle (0C)



Silver Sparkle (0S)



Red Sparkle (27)



Gold Sparkle (33)



Green Sparkle (54)



Blue Sparkle (32)

Liverpool 4: 3-ply Maple/Poplar/Maple, 1-ply Reinforcement rings, Original Black Oyster Pearl Finish



February 9, 1964. Black Oyster Pearl had been available as a Ludwig finish before this date, but a well-televised performance by a certain band from Liverpool made it a phenomenon. In the spirit of the original "Ringo Kit", Ludwig is proud to present the Liverpool 4 in Original Black Oyster Pearl finish. The Liverpool 4 has the configuration and 3-ply shell heard most on the timeless recordings of yesterday. It's the first Legacy kit to feature standard-sized Classic lugs and our new Rail Console tom mount. The first 100 sets will feature Ludwig's 100th Anniversary badge on each drum, making them another benchmark in the classic Ludwig timeline.

*Outfits shown do not include cymbals or hardware

STAINLESS STEEL KIT ANNIVERSARY EDITION

VISION. TRADITION. PRECISION. POWER.



*Anniversary Edition Stainless Steel 3-pc. Pro Beat Kit w/ Brass Hardware**

Shown: 14x24" bass drum (LB844XXSB), 16x16" floor tom (LF866XXSB) and 9x13" tom (LT893LMSSB). Shown with optional chrome plated brass snare (LB402BBTWM)



*Anniversary Edition Brushed Stainless Steel Pro Beat Kit w/ Chrome Hardware**

Shown: 14x24" bass drum (LB844XXSB), 9x13" tom (LT893LMSB) and 16x16" floor tom (LF866XXSB.) Shown with optional chrome plated brass snare (LB402BTDWM)

Stainless Steel: .5mm Stainless Steel in Two Finish Options



The 1970's were a time of great innovation at Ludwig's Damen Ave. facility. True to Ludwig's tradition of innovation, Stainless Steel kits were forged for unprecedented volume, sustain, and power in heavy music. Ludwig's new Anniversary Edition Stainless Steel Pro Beat outfit is a true testament to our timeless roots. Only 100 kits will be made available, all of them hand-rolled and tooled by Drumsmith Ronn Dunnett. The first 50 feature a polished stainless steel finish and brass hardware; the second 50 with a brushed stainless steel finish and chrome hardware. This ultra-thin stainless shell and bearing edge of each drum create a tone of such enormity that they simply have to be experienced to be believed.

CLASSIC MAPLE

SERIES DRUMS

Inspired by the drum construction from Ludwig's golden era, Classic Maple options are limited only by your imagination. With dozens of configurations, component sizes, current or classic hardware choices and finish possibilities, the player is completely in control of how the drum looks, plays and performs.

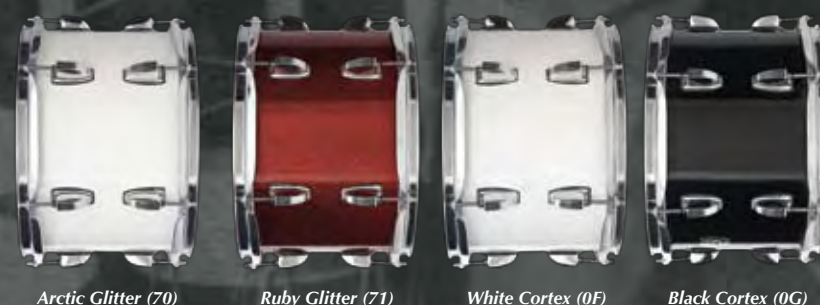
Ludwig also offers eight Classic Maple complete outfit packages in wide varieties, which consist of four, five and six-piece configurations for easy ordering. Each Classic Maple outfit or component comes standard with Mini-Classic lugs and Elite tom brackets and spurs. Options of yesterday such as Ludwig Classic

Lugs and Brackets, single-piece "Long" lugs, Heavy-Duty Curved Spurs and Modular mounts and holders are also readily available.

Choose from 25 eye-catching finishes varying from Vintage Pearl and Sparkle Wraps, Gloss Lacquers and exclusive Exotic Veneers, all of which demand attention.

No matter the playing style or preference, Classic Maple takes the options that discerning players demand and puts them right in the pocket of the player.

CLASSIC MAPLE SERIES FINISHES



CLASSIC MAPLE SHELL CONSTRUCTION



Proudly made in Monroe, North Carolina, Ludwig takes great care in selecting only the finest quality materials for Classic Maple drums.

This process starts with select North American maple. The maple is cut into panels. The outside panel is 1.8 mm thick, two ply, cross laminated maple. Cross lamination is the process in which the panels are made of two glued plies of wood, with the grain direction of one ply at 90 degrees in relation to the grain direction of the adjacent ply. The outside grain runs circumferential with the shell.

The center panel is 2.4 mm thick, three ply, cross laminated maple. The middle ply runs circumferential with the shell and the outer plies are at 90 degrees. The inside panel is 1.8 mm thick, two ply, cross laminated maple. The inside grain runs circumferential with the shell. This gives the 7-ply shells a total thickness of 6 mm.

The bearing edges are cut to a 45 degree angle within 1/16" from the outside edge. The sharp edges are rounded by light sanding for a smooth even surface. This process results in what is the unmistakable signature Ludwig sound.

CLASSIC MAPLE SERIES COMPONENT DRUMS

Bass Drums

Model	Size
LB848	14x18"
LB868	16x18"
LB840	14x20"
LB860	16x20"
LB880	18x20"
LB842	14x22"
LB862	16x22"
LB882	18x22"
LB844	14x24"
LB864	16x24"
LB884	18x24"
LB846	14x26"
LB866	16x26"

Floor Toms

Model	Size
LF824	12x14"
LF844	14x14"
LF835	13x15"
LF845	14x15"
LF846	14x16"
LF866	16x16"
LF868	16x18"

Toms

Model	Size
LT886	8x6"
LT888	8x8"
LT870	7x10"
LT880	8x10"
LT890	9x10"
LT882	8x12"
LT892	9x12"
LT802	10x12"
LT812	11x12"
LT893	9x13"
LT803	10x13"
LT813	11x13"

Toms

Model	Size
LT823	12x13"
LT804	10x14"
LT814	11x14"
LT824	12x14"
LT834	13x14"
LT844	14x14"
LT825	12x15"
LT835	13x15"
LT845	14x15"
LT846	14x16"
LT866	16x16"

CLASSIC MAPLE

SERIES DRUMS

BIG BEAT

L8625EM (w/ hardware)
L8625EX (shell pack)

16x22" bass drum, 16x16" floor tom,
9x13", 8x12" toms, 5x14" Supra-Phonic
snare drum

Features: Elite floor tom legs and brackets,
Mini-Classic lugs, Elite spurs, Elite tom
brackets with add-on tom holders, 900
Series stands, LM815FPR Pro bass pedal

Shown in Quilted Makoré with optional
Vibra-Bands.



This oval badge replicates one of Ludwig & Ludwig's earliest badge designs from the 1920's and comes standard on Classic Maple drums with exotic finishes.

The low-mass Mini-Classic lug is standard on Classic Maple outfits and components.

POWER 4

L8444LM (w/ hardware)
L8444LX (shell pack)

18x24" bass drum, 16x16" floor tom, 11x13" tom, 8x14" matching
snare drum

Features: Classic floor tom legs and brackets, heavy duty curved spurs,
900 Series double braced stands, LM815FPR Pro bass pedal, vintage
logo bass head

Shown in Indigo Sparkle with optional Classic lugs.

CLASSIC MAPLE

SERIES DRUMS

2 UP 2 DOWN

L8646EM (w/ hardware)
L8646EX (shell pack)

16x24" bass drum, 14x16", 12x14" floor toms, 9x12",
8x10" toms, matching 5x14" snare drum

Features: Elite floor tom legs and brackets, Mini-Classic lugs,
Elite spurs, Elite tom brackets with add-on tom holders, 900
Series stands, LM815FPR Pro bass pedal

Shown in Gold Sparkle with optional Vibra-Bands.



VIBRA-BAND TOM MOUNTING SYSTEM

Introducing Ludwig's new Vibra-Band tom mounting system, featuring a sleek, small profile mounting plate. The Vibra-Band allows the drum to "float" freely for maximum uninhibited resonance.

Available sizes and model numbers:

- L084R - 8"
- L106R - 10"
- L126R - 12"
- L136R - 13"
- L148R - 14"
- L168R - 16"



FAST 5

L8725EM (w/ hardware)
L8725EX (shell pack)

18x22" bass drum, 13x15" floor tom, 9x12", 7x10"* toms, matching
5x14" snare drum

Features: Elite floor tom legs and brackets, Mini-Classic lugs, Elite
spurs, Elite tom brackets with add-on tom holders, 900 Series stands,
LM815FPR Pro bass pedal

*7x10" tom available with Mini-Classic lugs only

Shown in Sunset Diamond Pearl with optional Vibra-Bands.

CLASSIC MAPLE

SERIES DRUMS

FAB FOUR

L8024LM (w/ hardware)
L8024LX (shell pack)

14x22" bass drum, 16x16" floor tom, 9x13" tom, 6.5x14" matching snare drum

L8004 (not pictured)
14x20" bass drum (Elite spurs only), 14x14" floor tom, 8x12" tom, 5x14" matching snare drum

Features: Classic floor tom legs and brackets, Mini-Classic lugs, heavy duty curved spurs, 800 Series single braced stands, single Rocker tom holder with 9.5mm arms, Speed King bass pedal, vintage logo bass drum head

Shown in Black Oyster Pearl



ZEP SET

L8264LM (w/ hardware)
L8264LX (shell pack)

14x26" bass drum, 16x18", 16x16" floor toms, 12x14" tom, 6.5x14" Supra-Phonic snare drum

Features: Classic floor tom legs and brackets, Mini-Classic lugs, Elite spurs, 900 Series double braced stands, Speed King bass pedal

Shown in Green Sparkle



POWER

L8825EM (w/ hardware)
L8825EX (shell pack)

18x22" bass drum, 16x16" floor tom, 10x13", 9x12" toms, 6.5x14" Supra-Phonic snare drum

Features: Elite floor tom legs and brackets, Elite spurs, Elite tom brackets and Classic double tom holder, 900 Series stands, Classic double tom holder with 10.5mm arms, LM815FPR Pro bass pedal

Shown in Black Diamond Pearl with optional Vibra-Bands and Classic Lugs.



Ludwig VISTALITE

Original. Explosive. Legendary.

There are many imitators but none compare to the original Ludwig Vistalite Plexiglas® drums. Originally introduced in 1972, the tradition of outstanding sound projection and power along with the renowned see-through appeal transcends time.

Vistalite drums are available in 4 colors: Amber (47), Blue (55), Yellow (56) and Clear (38). Piece together your own custom drum kit from the many available components or put yourself behind one of two standard outfits.

Lay down the "Hammer of the Gods" sound on an Amber Zep Set, or make yourself visible behind the timeless "Big Beat" 5-piece set.

Vistalite drums feature the popular 70's vintage blue/olive badges. Component drums come standard with Mini-Classic lugs. Large Classic lugs are also available.

COMPONENT DRUMS

Bass Drum*		Floor Toms		Toms**		Snares	
Model	Size	Model	Size	Model	Size	Model	Size
LB944V	14x24"	LF944V	14x14"	LT980V	8x10"	LS901V	5x14"
LB962V	16x22"	LF966V	16x16"	LT982V	8x12"	LS903V	6.5x14"
		LF968V	16x18"	LT993V	9x13"		
				LT904V	10x14"		

*With or without bass drum mounting plate

**Vibra-Bands with classic tom brackets are an option

JELLY BEAN*

Custom set shown with 16x22" bass drum, 16x16", 14x14" floor toms, 8x12" tom, 6.5x14" snare

Features: Classic tom legs and brackets, Mini-Classic lugs, (large Classic lugs can be ordered as option), single tom holder, vintage blue/olive badges



ZEP SET*

L8264LM47 (w/ hardware)
L8264LX47 (shell pack)

14x26" bass drum, 16x18", 16x16" floor toms, 10x14" tom, 6.5x14" Supra-Phonic snare drum

Features: Classic tom legs and brackets, Classic lugs, bass drum T-rod and Gold Sparkle inlay bass hoops, vintage blue/olive badges, 900 Series stands, LM815FPR Pro bass pedal

Shown in Amber

Not Shown:
Vistalite Big Beat
L9125LM (w/ hardware)
L9125LX (shell pack)

16x22" bass drum, 16x16" floor tom, 9x13", 8x12" toms, 5x14" matching snare

Features: Classic tom legs and brackets, Mini-Classic lugs, (large Classic lugs can be ordered as option) Vibra-Band mounts standard, LR2980MT double tom holder with 9.5mm arms, vintage blue/olive badges, 800 Series single braced stands, Speed King Pedal

Carl Palmer photo credit © Mary Ann Burns

Centennial series drums

BUILT FOR THE ROAD



SHELL: 6-ply North American Maple (8-ply on bass and snare drums)

With the touring player's demands in mind, Ludwig presents the new Centennial Series. Combining the warmth and projection of quality North American Maple shells in a choice of 4 custom configurations, Centennial delivers reliability and the legendary Ludwig sound in one exceptional package.

CENTENNIAL SERIES FINISHES



Green Sparkle (G)



Natural Maple (N)



Charcoal Shadow (B)

PRE-CONFIGURED DRUM SETS

Groover

LRC20:
20x20" bass drum, 13x16" floor tom, 8x12" tom, 6.5x13" snare drum

Optional add-on component LRC1314F:
13x14" floor tom

Arena

LRC24:
20x24" bass drum, 15x16" floor tom, 8x12" tom, 6.5x14" snare drum

Optional add-on component LRC1618F:
16x18" floor tom

Powerdrive

LRC22:
20x22" bass drum, 14x16" floor tom, 8x12" tom, 6.5x14" snare drum

Optional add-on component LRC1314F:
13x14" floor tom

2 Up 2 Down

LRC22:
20x22" bass drum, 14x16" floor tom, 8x12" tom, 6.5x14" snare drum

Optional add-on component LRC1314F:
13x14" floor tom

Optional add-on component LRC7510T:
7.5x10" tom

COMPONENT DRUMS

Bass Drums		Floor Toms	
Model	Size	Model	Size
LRC2020B	20x20"	LRC1618F	16x18"
LRC2222B	20x22"	LRC1314F	13x14"
LRC2024B	20x24"		

Toms		Snare Drums	
Model	Size	Model	Size
LRC1014T	10x14"	LRC6513S	6.5x13"
LRC0913T	9x13"	LRC6514S	6.5x14"
LRC7510T	7.5x10"		
LRC0708T	7x8"		

Centennial in Silver Sparkle (S)*

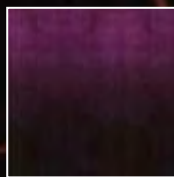
Features: LRC22 core pack with the addition of LRC2022B 20x22" bass drum, LRC1314F 13x14" floor tom, LRC0913T 9x13" tom and LRC7510T 7.5x10" tom

*Outfits shown do not include cymbals or hardware

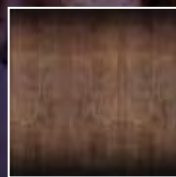
EPIC X-OVER

SERIES DRUMS

EPIC X-OVER SERIES FINISHES



Purple Passion (PP)



Natural/Blackburst (NB)

The hallmark of the Ludwig sound has always begun with the shell. As we enter the 101st year of our manufacturing history, Ludwig returns to its roots by experimenting with multiple-wood shell compositions for new horizons in tonal variety. The result is Epic, a new series of drums crafted for every player from the gigging workhorse to the seasoned pro.

SHELL: Walnut Inner/Outer, Poplar Core, 3-ply Birch Reinforcement Rings

American Walnut is known not only for its dark color and grain, but also for its deep tonality and warmth. The new Epic X-Over expands on darker overtones by employing a Poplar core to an inner and outer Walnut shell. 3-ply Birch reinforcement rings are added for extra definition and focus, resulting in a sound that speaks in the lower register with power and clarity. Optional 7.5x10" rack toms and 13x14" floor toms are available to further expand the tonal range of three configured shell packs. Three new finish options create a stunning look.



Epic X-Over Arena kit (LRX24AX) in Redburst (RB)*

Features: 20x24" virgin kick drum, a 6.5x14" snare, 8x12" tom and 16x16" floor tom (Shown with optional 13x14" floor tom)



Epic X-Over Striped Jazzette kit in Natural (LRS18JXN)*

Features: 14x18" kick drum w/new Rail Console tom holder, 5x14" snare, 8x12" tom and 14x14" floor tom

Segmented inner shell creates a unique tone never before heard.



Jazzette Kit features unique bass drum lift for better sound.



SHELL: Walnut/Maple/Walnut Inner and Outer, Poplar Core, 3-ply Birch Reinforcement Rings

Segmented shell crafting is an exciting concept that incorporates the dark quality of Walnut inner/outer plies fused with the warmth of North American Maple inner/outer plies to create a whole new tonal as well as visual experience. This magic combination combined with 3-ply Birch reinforcement rings and Poplar core plies results in a sound and look that is unparalleled in drum making. The perfect balance between rumbling lows and sparkling highs is achieved with the Epic X-Over Striped Series. Available only in a natural gloss finish and three classic Ludwig configurations, X-Over Striped is simply the best of all worlds.

EPIC

SERIES DRUMS

Taking the focused cutting tone of Birch and fusing it with the warmer qualities of Maple, Epic Series drums produce a wet and powerful sound. Epic's new ultra-thin 6-ply shell vibrates at an even rate, sculpting a rich balance between subtlety and pure sonic force. 2.5mm snare hoops (2mm on toms), new Classic Keystone low-mass lugs and Vintage Bronze hardware augment four classic high-gloss finishes for a unique look and feel. In addition to three 6/4/5* set-ups offered during our Anniversary year, Epic also features two classic 4-piece shell packs. All of the exciting innovations of the Epic Series place these drums truly at home in the Ludwig Legacy.

Epic Series ProBeat kit (LCEP24BX) in Natural/Blackburst (BB)*

Features: 14x24" kick drum, a 5x14" snare, 7x10" and 8x12" toms and 14x14" and 16x16" floor toms



SHELL: Birch Inner and Outer, Maple Core, Thin 6-ply Shell



Epic Series Modular kit (LCEP20MX) in Blue Fade (BL)*

Features: two connectable 8x20" kicks, a 6x13" snare, 7x10" and 7x12" toms, and 12x14" and 13x16" floor toms

Also available in Tobacco Fade (TB).

Epic Modular: All Birch, 7-pc. Shell Pack

Any drum set can be flexible in its set-up, but how many kits can be so flexible that they are completely different every time? Epic Modular fits the bill, coming standard with two rack toms, two floor toms and two 8x20" kick drums that connect together for one massive sound.

Played separately as a double bass set, Epic Modular's twin kick drums have just the right amount of punch, while their shallow depth makes faster rebounds a reality.



*For a limited time, qualifying Epic, Element Lacquer and Element Series 5-piece drum sets will include an additional tom at no extra cost. Offer subject to change without notice, pricing and participation may vary, see www.ludwig-drums.com for details.

Arranging the included rack and floor toms in a myriad of patterns creates multiple creative set-ups for gigging drummers. The drums can also be configured into two separate kits for small club performance or for interactive teaching.

EPIC SERIES FINISHES (all with Vintage Bronze Hardware)

Attic White (AW)



Mahogany Burst (MF)



Red Fade (DR)

*Outfits shown do not include cymbals or hardware

ELEMENT SE

SERIES DRUMS

Element SE - or Special Edition - is a destination for specialized collaboration kits, showcasing an evolving array of customized features for the gigging player. Limited to shorter production runs, these specialized shell packs are just as likely to disappear as quickly as they came.

The Element SE is the ultimate canvas for acclaimed tattoo artist Corey Miller. His black and white tattoo flash is set against a backdrop of pre-aged Nicotine Pearl wrap. This limited kit is beautifully enhanced with black hardware. The shallow toms and ultra-deep kick and snare deliver a massive punch.

*Element SE Corey Miller kit (LRE22COREY)**

Features: 22x22" kick drum, a 7x14" snare, 8x12" tom and 14x16" floor tom

This familiar bandana pattern is strikingly accentuated with an Emerald Green sparkle finish. This outfit features select hardwood shells, a 22x22" kick and our new Micro-Classic Lug. The Element SE Bandana outfit offers boutique looks and sound without the high-end cost.

*Element SE Bandana Sparkle kit (LRE22BDANA)**

Features: 22x22" kick drum, a 6.5x14" snare, 8x12" tom, and 14x16" floor tom

Photo credits: © Robert Downs



ELEMENT SERIES DRUMS

Element Lacquer drums employ two Poplar plies at the core of its thin, 6-ply shell. This adds a warmer fundamental tone to the bite and volume of its inner Birch plies. The stunning nature of four available high-gloss finishes over Marbled Birch wood is accentuated by our new Classic Keystone lugs, 2.5mm snare and tom hoops and options like black hardware (limited on select finishes.) In addition to three available 6/4/5* packages, Element also features the Emo four piece shell pack with a massive 22x20" kick drum (not shown).

ELEMENT LACQUER FINISHES



Black-Green Fade w/ Black Hardware (BG)

Natural Burst w/ Chrome Hardware (NB)

Red Reverse w/ Chrome Hardware (RO)



SHELL: Marbled Birch Inner and Outer, thin 6-ply shell with Poplar Core



SHELL: Thin 6-ply select Hardwood Shells

Right out of the gate, Element Series drums offers a dazzling array of custom inspired options to the student-level player. Vibra-Band suspension mounts, our new Classic Keystone lug and two new finishes are only the beginning and combine to make Element Series the perfect choice for the next step.

ELEMENT FINISHES



Wine (4)

Black (1)

White (3)



Element Lacquer Series Power Fusion Kit (LCB22PX) in Black/Grey Burst (BF)*

Features: 18x22" kick, a 5x14" snare, 7x8", 8x10" and 9x12" toms, and a 14x16" floor tom

Element Series Power (LCE22RX) configuration in Orange (5)*

Features: 18x22" kick, a 6.5x14" snare, 8x10", 9x12", and 10x13" toms, and a 16x16" floor tom

*Outfits shown do not include cymbals or hardware

*Outfits shown do not include cymbals or hardware

ACCENT CS 100 SERIES

POWER

Accent CS Combo Power - LC1251

16x22" kick, 16x16" floor tom,
11x13" tom, 10x12" tom, 6.5x14"
snare drum

Not Shown:

Accent CS Combo Jazz - LC105

16x20" bass drum, 14x14" floor tom,
8x12" tom, 8x10" tom, 5x14" snare drum

Ludwig offers three fantastic options in our most affordable line for the young drummer: the Accent Nomad outfit for the early beginner, the Accent CS Combo Jazz and the CS Combo Power for drummers needing a full-sized drum set-up.

Features 9-ply, 8mm select hardwood veneers with the choice durable PVC finishes, including Black (1) and Wine Red (4), both with chrome hardware, and new White (8) and Metallic Purple (6) both with black hardware. Outfit comes with a lightweight, sturdy double braced hardware package and single braced throne. Cymbals not included.



NOMAD

Accent CS Combo - LC135

14x18" bass drum, 12x14" floor tom, 8x12" tom,
8x10" tom, 5x13" snare drum

Shown In Black

Available only in Black and Wine



JUNIOR KIT

The Junior Kit has all the features of a full-sized outfit, sized for drummers 4-8 years old.

LJR106

10x16" bass drum, 10x13" floor tom, 5x10" tom,
5x8" tom, 4x12" snare drum

Throne & cymbals included

Shown In Wine Red

Available in Wine Red, Black and Blue

Ludwig Drum Company
presents
THE SNARE DRUMS
OF A CENTURY
Collection

In celebration of the emblems that defined a drum-making legacy, Ludwig presents this exclusive assortment of Limited Production Anniversary Edition snare drums.

The 1928 Gold Triumphal Reissue



As the crown jewel of the collection, every component of the Triumphal is hand-tooled by a single craftsman in the Italian Alps to be absolutely true to the specifics of the original. Each drum is uniquely engraved with a year in Ludwig's history. Features include a hand-engraved 24k gold-plated spun brass shell, matching engraved hoops, cable-wound snare wires and vintage strainer. This drum is limited to 100 pieces worldwide.

Visit www.goldtriumphal.com for more details on this unique piece of Ludwig history.

The 100th Anniversary Black Beauty



Recording and touring artists consider The Black Beauty to be a true necessity. The 6.5x14" Anniversary Edition boasts a seamless black nickel plated brass shell with the most elaborate engraving in Black Beauty history, hand-tooled by artisan John Aldridge. Production is limited to 100 pieces worldwide.



The Chief - Titanium Supraphonic Drums



Available in the original 6.5x14" and new 5.5x14" editions and featuring Imperial Lugs, beaded Dunnett Classic .035" titanium shell, piston throw-off and adjustable air-vent, "The Chief" offers a wide tuning range and amplified crisp tone. A specially minted drum badge featuring Bill Ludwig II commemorates his historical contributions to drums and drumming.

The 100th Anniversary Black Magic



Often described as "The Working Drummer's Black Beauty", the face of its black nickel plated brass shell is laser-engraved to pinpoint accuracy, revealing the beauty beneath the tone. Die-cast hoops and tube lugs are standard.

Ludwig
Signature Artist
COLLECTION



THE ALEX VAN HALEN
LIMITED EDITION
SIGNATURE SNARE DRUM



Since 1978, Alex Van Halen's snare sound has been an unmistakable fingerprint in rock and roll drumming. To celebrate 30 years of rock solid partnership, Ludwig and Alex present this hand-signed Special Edition drum. This unique snare combines 15-ply of rare Honduran Santos Rosewood, Ludwig's classic Millennium strainer, 40-strand snare wires and custom appointments which Alex has meticulously overseen. Production is limited to only 100 pieces.



INTRODUCING THE BUN E. CARLOS SIGNATURE SNARE DRUM



OF ALL THE SNARES IN HIS COLLECTION...
HE CHOSE THIS ONE.



Few know Ludwig drums like Cheap Trick drummer Bun E. Carlos. A noted Ludwig collector and connoisseur since 1966, Bun E. has played Ludwig drums of every kind on Platinum albums and endless sold out tours.



For his new signature snare drum, Bun E. chose his favorite elements from his snare archives and combined them in one exclusive model. Beginning with a 3-ply Legacy shell for tone, Bun E. chose 8 Classic lugs, triple flanged hoops, Millennium strainer and a Glass Glitter Citrus Mod finish. This drum carries a signature sound as unique as the player whose name is on it. Limited to 100 pieces, each drum is numbered and signed by Bun E. himself.

Ludwig Black Beauty SNARE DRUMS

One of the primary reasons Ludwig is “the most famous name on drums” is the legendary Black Beauty Snare Drum. The brass shell is constructed of a single sheet of brass that is machine drawn and spun into a seamless beaded drum, then black nickel plated with a beautifully exquisite finish. The shell provides a warm, round metallic tone.

With any of the three strainer options of P85 Supra-Phonic, P86 Millennium or P70 Super-Sensitive strainers, the Black Beauty responds with excellent sensitivity at all volumes. Choose from Imperial or tube lugs, die cast or triple-flanged hoops and a smooth or hand hammered shell. The 70 year tradition of the Ludwig Black Beauty carries on as the ultimate snare drum in the industry.



Brass on Brass

Black Beauty - LB416BT

Features: brass plated P86 Millennium snare strainer, brass plated P33 butt plate, brass tube lugs, brass die cast batter and snare hoops



LB553B - 3.5x13"



LB416 - 5x14"



Hammered Shell

LB417KT - 6.5x14"

Features: hammered shell, tube lugs, P85 Supra-Phonic strainer

Ludwig Supraphonic SNARE DRUMS

Performance proven to be the sound that fueled the most hit recordings in history, the Ludwig LM400 and LM402 are the snare drum choice of the pros.

From Jazz to Metal, Ludwig 400 Series Snare Drums provide the perfect sound in the studio or on stage. The USA made chrome plated seamless aluminum shells produce a bright, crisp cutting sound, with the perfect balance of full resonant tone and snare crack.

The LM400 and LM402 are available with Imperial lugs or tube lugs and smooth or hammered shells.



LM400 - 5x14"



LM402 - 6.5x14"



LM411 - 6.5x14"
Features a Super Sensitive strainer

Chrome-Plated Brass Snare

LB402BBTWM

Features: spun seamless brass shell, brass plated P86 Millennium snare strainer, brass plated P33 butt plate, brass tube lug, brass die cast batter and snare hoops



Ludwig

SNARE DRUMS

Bronze Snare Drums



LB550 - 5x14"



LB552KT - 6.5x14"
Hammered shell with tube lugs

A softer, darker alloy generally used for cymbal making, bronze presents a unique blend of metal snare projection and the warmer tones of a wood drum. Ludwig's seamless shell is available in a choice of flawless smooth finish for ultimate resonance, or the unique, drier properties of the hammered shell. Options include standard 2.3mm triple-flanged or die-cast hoops, Imperial or tube-style lugs and Classic P85 or Millennium P86 snare strainers. Bronze snares are also available with Super-Sensitive snare strainer.

Acrolite Snare Drum



LM404 - 5x14"



LM405 - 6.5x14"

Once perceived as a student-level snare drum, the sound of the Ludwig Acrolite Snare has become an artist favorite for bright, dry response and articulate play. Featuring the signature "Black Galaxy" finish, Classic lugs and unique black/white vent badge, Acrolite's seamless aluminum shell reflects Ludwig excellence in quality and leaves no question that it is simply a tremendous snare drum at any level.

Ludwig

SNARE DRUMS

Classic Maple Snare Drums

Ludwig's wood snares have remained popular throughout the company's 100-year history and were the drums that helped establish the fat backbeat and deep grooves of pop and R&B music in the 1970's and 80's.

The Classic Maple 7-ply all-maple shell features the clarity and warmth players have come to expect from maple drums, plus the projection and musicality that has maintained Ludwig's reputation for snare drum innovation and excellence.

Available in a wide selection of sounds, sizes and styles, from piccolo, standard and deep models. From lacquer, exotic and wrapped finishes, Ludwig Classic Maple snares are the new Classics of today. Sizes not shown: 6x13", 3x13" and 3.5x14".



LS403TD - 6.5x14"
Brass die-cast hoops, brass tube lugs, brass plated P86 Millennium strainer and butt plate
Shown in Cherry Lacquer Stain



LS462 - 6x12"
Shown in Red Sparkle



LS403 - 6.5x14"
Shown in Green Sparkle



LS484 - 8x14"
Shown in White Marine Pearl



LS401 - 5x14"
P86 Millennium Strainer
Shown in Champagne Sparkle

Ludwig SNARE DRUMS

Exotic Wood Snare Drums

Ludwig's exotic wood snare drum line offers a stunning array of exclusive veneers selected from Steinway Piano in Boston, MA. From figured woods like Birdseye Maple and Waterfall Bubinga, to quilted woods like Makoré and Sapele, all exotic snares feature 8-ply of maple with an outer ply of exotic veneer. Available options include tube-style lugs, die-cast hoops and brass hardware.



LS403TD50WMB
Birdseye Maple



LS403TD65WM
Sapele Pomele



LS403TD53WMB
African Waterfall Bubinga



LS403TD62WM
Makoré (African Cherry)



LS403TD67WM
Santos Rosewood



LS403TD70WMB
Arctic Glitter

Epic Centurian Exotic Snares

Further pushing the Epic shell hybrid concept, Centurian models give discerning players the choice of 10-ply Bubinga, 12-ply Sapele with Maple reinforcement rings, or 8-ply American Walnut Burl over Canadian Maple. These 6.5x14" models come standard with tube lugs and 2.3mm hoops. (Pictured with die-cast hoops.)



LCEX6514TXWA
American Walnut/Maple

LCEX6514TXSA
Sapele

LCEX6514TXBU
Bubinga

Black Magic SNARE DRUMS

Ludwig has always been the leader in black nickel plated snare drums. We now bring more of that signature sound and quality to the table with Black Magic Snare Drums. Available in three sizes, Black Magic is accentuated with matching tube lugs and die-cast hoops. This is classic nickel over brass tone that drummers have come to expect from Ludwig.



LW5514 - 5.5x14"

LW6514 - 6.5x14"

LW0713 - 7x13"

Additional Ludwig Snare Drums

From beginner to gigging player, Ludwig offers a variety of snare drums at a great value that fit all types of playing styles. From the metallic crisp pop of the steel shell Rocker, to the deep punchy tone of the brass shell snares, to the warm round tone of the bronze shell and the solid crack of the Rocker Elite Piccolo Snare. It's all here and it's all Ludwig.



Rocker Metal Snare
LR719 - 6.5x14", LR720 - 5x14"



Chrome Steel Snare
LM302 - 6.5x14", LM300 - 5x14"



Bronze Snare
LM306 - 6.5x14", LM305 - 5x14"



Brass Snare Drum
LM304 - 6.5x14", LM303 - 5x14"



Accent CS Steel Shell - Chrome plated
LC054S - 5x14"



Natural Finish Only
LRS313EC - 3x13"



900, 800 & 700 SERIES

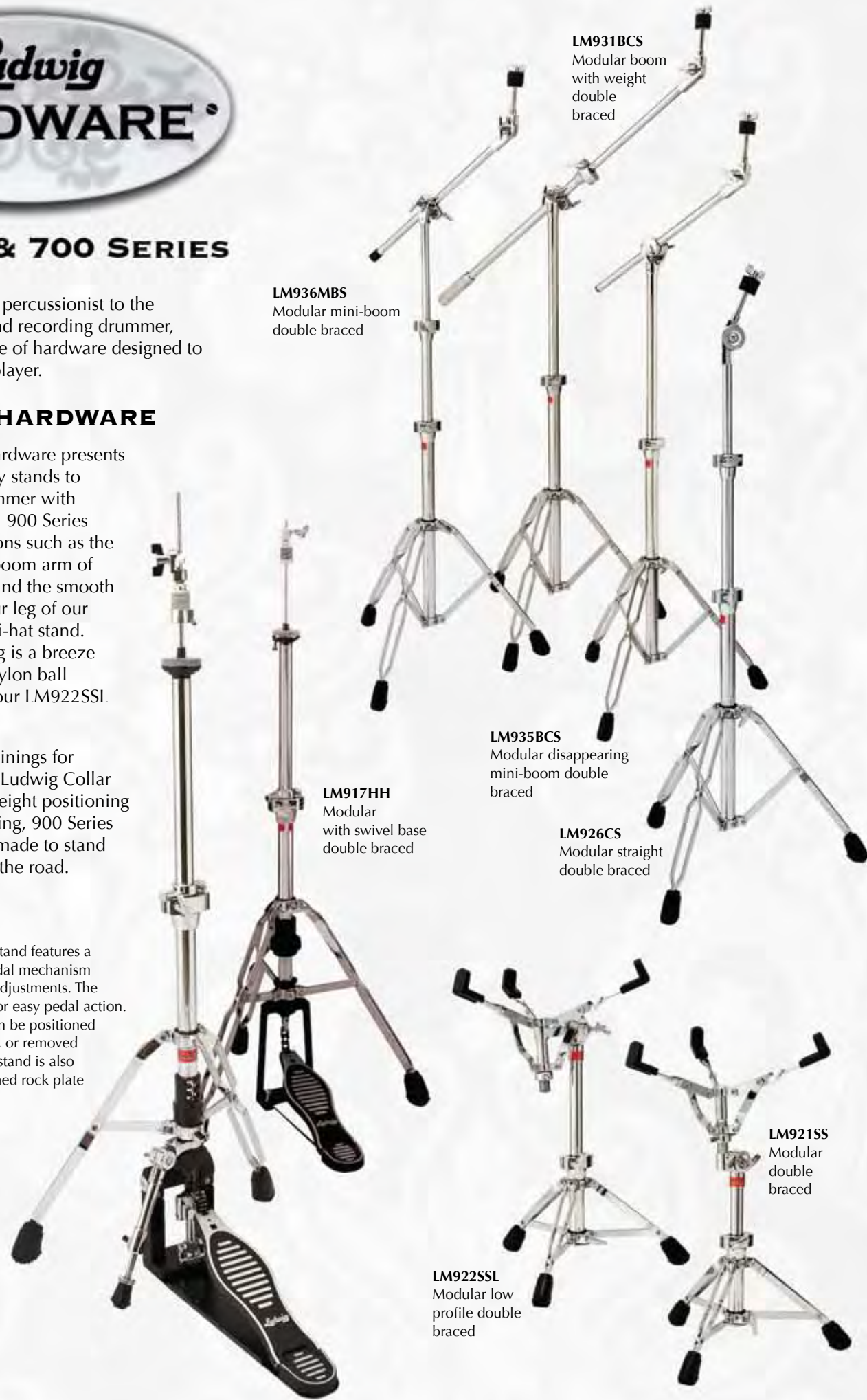
From the student-level percussionist to the professional touring and recording drummer, Ludwig offers a full line of hardware designed to fit the needs of every player.

900 SERIES HARDWARE

Ludwig's 900 Series hardware presents a full line of road ready stands to equip the gigging drummer with versatility and stability. 900 Series hardware offers functions such as the disappearing cymbal boom arm of the LM935BCS stand and the smooth action and flexible spur leg of our LM918HH Pro Float hi-hat stand. Snare drum positioning is a breeze with the low-profile, nylon ball positioning system of our LM922SSL snare stand.

Featuring nylon inner linings for smooth operation, the Ludwig Collar Clamp for stress-free height positioning and triple chrome plating, 900 Series Modular Hardware is made to stand up to the challenge of the road.

The LM918HH Pro Float stand features a smooth floating action pedal mechanism with six possible tension adjustments. The cam lever system allows for easy pedal action. The additional spur leg can be positioned on either side of the stand, or removed completely. The Pro Float stand is also equipped with a Velcro-lined rock plate for added stability.



LM936MBS
Modular mini-boom
double braced

LM931BCS
Modular boom
with weight
double
braced

LM917HH
Modular
with swivel base
double braced

LM935BCS
Modular disappearing
mini-boom double
braced

LM926CS
Modular straight
double braced

LM921SS
Modular
double
braced

LM922SSL
Modular low
profile double
braced

800 SERIES HARDWARE

Sturdy and reliable, 800 Series stands feature the same cymbal, hi-hat and snare drum support as the 900 Series, but with single braced legs for reduced weight. Ideal for repeated set-up and tear-down, 800 Series is heavy in function, but lighter for the load."

LM817HH
Modular
with swivel base
single braced

LM831BCS
Modular boom
with weight

LM836MBS
Modular
mini-boom
single
braced

LM826CS
Modular straight
single braced

LM822SSL
Modular
low profile
single braced

700 SERIES HARDWARE

When the gig calls for a light-weight alternative to the normal bulkiness of tour-class stands, 700 Series cymbal, cymbal boom, snare and hi-hat stands offer the durability and rigid strength of double braced hardware, with thinner diameter piping and fixtures.

LC716HH
Classic
double
braced

LC736MBS
Classic
mini-boom
double
braced

LC726CS
Classic
straight
double
braced

LC722SSL
Classic
low profile
double
braced

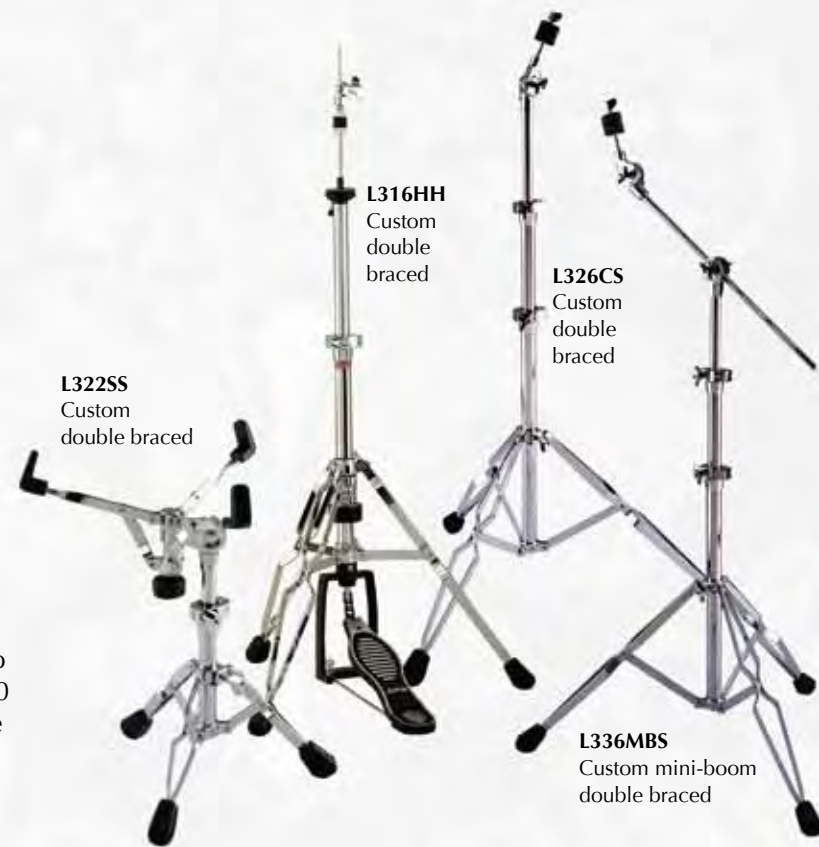
LT126CS
Flat base
lightweight
straight single
braced



300, 400 & 200 SERIES

300 SERIES HARDWARE

Pro features don't always have a high price tag attached. Ludwig 300 Series hardware features the functionality, heavy tubing and sturdy, double braced legs that are normally only found on high-end stands. From the disappearing boom arm on the L336MBS cymbal stand, to the multi-tension control on the L316HH hi-hat stand, 300 Series hardware puts tour-strength gear in the hands of the drummer at an astonishing price.



L322SS
Custom double braced

L316HH
Custom double braced

L326CS
Custom double braced

L336MBS
Custom mini-boom double braced

400 SERIES HARDWARE

For the up-and-coming drummer, 400 Series stands are made to be accessible without sacrificing the elements needed to take real punishment. Performance-proven features include hide-away boom tilters, double-braced legs, basket-style snare stand adjustments and reinforced locking mechanisms for secure positioning.



L426CS
400 Series straight double braced

L416HH
400 Series double braced

L436MBS
400 Series boom double braced

L422SS
400 series double braced

L236MBS
Combo lightweight boom double braced

L216HH
Combo lightweight double braced

L226CS
Combo lightweight double braced

L222SS
Combo lightweight double braced



200 SERIES HARDWARE

A standard hardware package for the beginning player, 200 Series stands combine form and function with sturdy construction. A great start for drummers of any age.

THRONES

Not Shown:

LM448TH
Seat Case - Specify Finish (Classic Wrap Only)



L351TH
Saddle style - wide double braced with fabric top



LM450TH
Modular - wide double braced with fabric seat



L348TH
Round - double braced with fabric top



L347TH
Custom - double braced



LR246TH
Rocker - double braced



LM446TH
Modular - double braced



L350TH
Round - wide double braced with fabric top



L349TH
Saddle style - standard double braced with fabric top



LM449THB
Modular bicycle style with back double braced



TOM STANDS & HOLDERS

Not Shown:

LC641TSE
Accent double tom stand with 10.5mm L-arms - double braced

LM541TSE
Tall double tom stand for 10.5mm Elite mounts - double braced

L355STH
Accent CS add-on 10.5mm L-arm/ball single tom holder

PC1176
Custom double tom holder with 10.5mm L-arm/ball

LM444TSR
Low double tom stand for 9.5mm L-arm mounts - double braced

LC343TSM
Low double tom stand for modular mounts - single braced

LC341TSM
Tall double tom stand for modular mounts - single braced

LM441TSM
Tall double tom stand for modular mounts - double braced

LM443TSM
Low double tom stand for modular mounts - double braced

LC155STH
Rocker post style single tom holder

LR2991MT
Elite single tom holder with 10.5 mm L-arm



LR255STH
Rocker single tom add-on holder with 9.5mm L-arm/ball

LR254STH
Elite single tom holder with 10.5 mm L-arm/ball



LR257STH
Elite single tom add-on holder with 10.5mm L-arm/ball

LR256STH
Rocker single tom add-on holder with 9.5mm L-arm/ball



L345TS
Custom double tom stand double braced



LC344TSR
Low double tom stand for 9.5mm with L-arm mounts single braced



LC342TSR
Tall double tom stand for 9.5mm with L-arm mounts single braced



LM442TSR
Tall double tom stand for 9.5mm with L-arm mounts double braced



LM543TSE
Low double tom stand for 10.5mm Elite mounts double braced



LR2980MT
Rocker double tom holder with 9.5mm L-arm/ball



LR2992MT
Classic double tom holder with 10.5mm L-arm/ball



LM3002MT
Modular double tom holder with tube style

LR2981MT
Rocker single tom holder w/ 9.5mm L-arm/ball

SPEED KING PEDAL

The Speed King pedal revolutionized the drumming industry and enabled drummers to play more fluently. Famous for speed and precision, some of the most legendary names in drumming use the Speed King for its smooth feel and powerful response. Designed with a reverse double compression spring mechanism, solid metal construction, direct link drive and a classic felt beater. Speed King. Experience what legends play.



L201
Speed King

LUDWIG PRO PEDAL

Ludwig Pro Pedals are the next generation of design. The LM815FPR Single and LM812FPR Double Pedals offer rock plate technology for the ultimate in stability. Pro pedals feature a double chain drive, reversible pedal beater, a side adjustment hoop mount, a stylish footboard and fast, smooth cam action mechanics. These Pro Pedals also include Pedal Bags for the gigging drummer.

Not Shown:

LM811RP
Rock Plate Add-On



LM812FPR
Ludwig Pro double pedal (includes bag)



LM815FPR
Ludwig Pro pedal with Rock Plate (includes bag)



L312FPR
Ludwig Pro double pedal



LC614FP
Classic



L415FPR
400 Series



L315FP
Custom pedal with Rock Plate



L215FP
Combo



MISCELLANEOUS HARDWARE



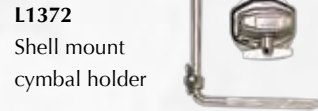
LM451CH
Modular add-on
cymbal holder



LM463AXH
Stationary Hi-Hat



LR251CH
Rocker add-on
cymbal holder



L1372
Shell mount
cymbal holder

LM472SPH
Stackable cymbal
arm attachment



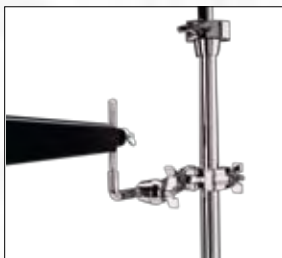
LM471SPH
Splash cymbal holder
10.5mm post



LM470SPH
Splash cymbal
holder



LM473CBH
Add-On Cowbell
Holder Attaches to
Cymbal Stand



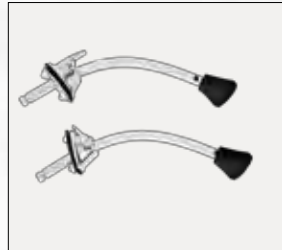
LM474CBH
Add-On Cowbell
Holder Attaches to
Bass Hoop



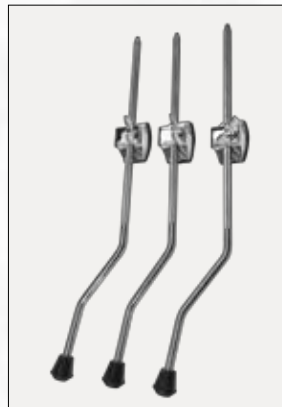
LR2974SP
Elite Kick Spur



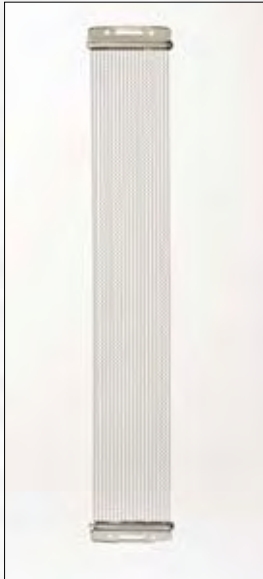
LC1308SP
Classic Curved
Disappearing
Spur (Pair)



LC5024TL
Elite 10.5mm
20.5"
Tom Legs &
Brackets (3)



L1930
20 Strand Thin Wire
Snares, 14" Metal End



L1232
20 Strand Wire Snares,
14" Swivel Mounted



P85
Standard Throw



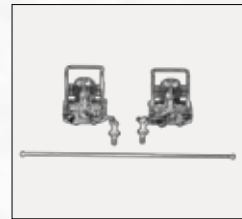
P86
Millennium Snare
Strainer
(Chrome)



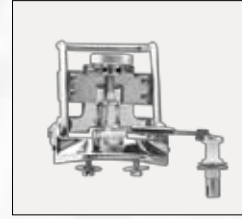
P32
Snare Butt for P85,
P86, P80



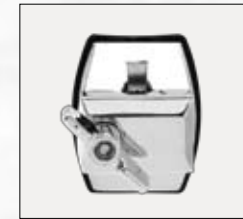
P80
USA Classic Piccolo
Snare Throw Off



P70
Super Sensitive
Throw Off for 5x14"



P47
Snare Butt for
Super Sensitive P70



P7185AP
Elite Tom Mounting
Bracket



P7184A
Elite Bass Mounting
Plate



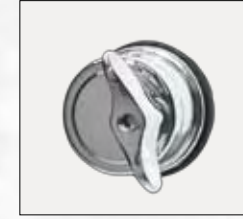
P1610D
Ludwig Bass Drum
Mounting Plate



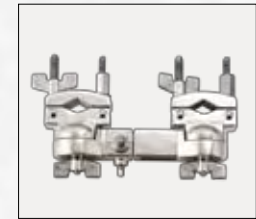
P1762B
Modular Tom Mount
Bracket



P1765B
Modular Bass
Drum
Mounting Bracket



PC1020
Accent CS Combo
Floor Tom Bracket



LM453CLU
Modular Universal
Clamp



L2508
Clutch For All
Modular & Classic
Stands



L2509
Quick Release Hi-
Hat Clutch



L2510
Sure Hi-Hat
Clutch



L1283
Hard Felt Beater



P40662
Internal Tone
Control

Not Shown:

- P86B** - Millennium Snare Strainer (Brass Plated)
- P33** - Die Cast Snare Butt for P85, P86, P80
- P33B** - Die Cast Snare Butt for P85, P86, P80 (Brass Plated)
- P82** - Rocker, Rocker Elite Metal Snare Drum Throw Off
- L1929** - 12 Strand Heavy Wired Snares 14" Metal End
- L1224** - 18 Strand Wire Snares, 14" Swivel Mounted
- PC1068** - Accent CS Combo Tom Bracket
- P1216D** - Ludwig Tom & Floor Tom Leg Bracket
- P41** - Standard Drum Key

- P71** - Super Sensitive Throw Off for 6.5x14"
- L111** - Torque Wrench
- L112** - Spin Key
- LC5023TL** - Classic 9.5mm 23" Tom Legs & Brackets (3)
- L1280** - Reversible Nylon/Hard Felt Beater
- L1285** - Lambs Wool Speed King Beater
- L1286** - Hard Felt Speed King Beater
- L1304BA** - Bass Drum Anchor

Ludwig ACCESSORIES

DRUMHEADS

Whatever playing situation you're in, Ludwig has a drumhead made just for you. All Ludwig WeatherMaster® Drumheads feature our exclusive Headlock System and low profile collar, designed for even tuning and "no pull out" tensioning.



Vintage Front Bass Drum Head

Ludwig's re-issue of the stylish Vintage Logo Drumheads are an exact replica of the heads that adorned the famous drum sets of the sixties. These heads are smooth white and feature the black "script" logo at the top.



Black Heavy Bass Drum Head

Ludwig Black Bass drum heads offer excellent response and durability for any concert setting indoor or outdoor. These heads are ideal for extra projection.



White Coated Heavy Bass Drum Head

These 10ml heads are heavy coated for extra depth, as well as warmth and focus. Ludwig's Heavy Coated Heads provide the sound and durability you've come to expect from Ludwig Weather Master Heads.



Power Collar Clear Bass Drum Head

Reduce unwanted overtones with Ludwig's Power Collar Head. These heads feature a clear heavy weight 10ml single ply material with an outer tone ring.



Silver Dot Heavy Bass Drum Head

A heavy clear one ply head with a silver reinforced center dot. Ludwig's Silver Dot Heads are a favorite amongst marching percussionist and heavy hitters alike.

DRUM STICKS & BRUSHES

Drumsticks

Model No.	Wood Tip	Nylon Tip	Description
L-7A	L-7AN		Small Olive Bead, 15-3/8" & .500 diameter
L-Jazz			Small Barrel Bead, 16-1/8" & .550 diameter
L-Rock	L-Rock-N		Large Acorn Bead, 16-3/8" & .550 diameter
L-5A	L-5AN		Medium Olive Bead, 15-3/8" & .575 diameter
L-5B	L-5BN		Large Acorn Bead, 16-1/8" & .600 diameter
L-SD1			Large Barrel Bead, 16-3/8" & .630 diameter
L-2B	L-2BN		Large Acorn Bead, 16" & .650 diameter
L-MS1			Large Ball Bead 16" & .700 diameter
L-3S			X-Large Barrel Bead, 16-1/2" & .700 diameter

Wire Brushes

Model No.	Description
L-194	Red-Grooved Handle w/ Ball End
L-206	Clear Plastic Handle w/ Loop End
L-191	Red-Grooved Handle w/ Loop End
L-195	White Plastic Handle w/ Loop End
L-190	Red-Ribbed Handle w/ Loop End

THE 100TH ANNIVERSARY KOSKIN SNARE BAG



Protect your investment with this exquisite snare drum bag, embossed for a limited time with the 100th Anniversary Logo. Koskin is a water-resistant synthetic that looks and feels like leather, but with a higher level of durability. The bag is padded on all sides with 1" of foam and lined with a plush fleece for protecting finishes. Fits up to a 6.5x14" drum, comes with luggage handle and detachable shoulder strap. Available in black with white lining.

PADDED GIG BAGS



Ludwig offers high quality gig bags at competitive prices with value added features that will provide the gigging drummer a good investment in protecting their drums.

Ludwig's Padded Gig Bags feature a sturdy handle for lifting, heavy duty zippers, adjustable shoulder strap for easy carrying, a metal snap hooks and rings, as well as double stitched webbed handles with black rubber tubing comfort grips. The snare drum bags also include a handy detachable shoulder strap. All Gig Bags are black.

SIDE PROTECTION SYSTEM BAGS



Ludwig's Side Protection System Bags feature durable plush lining and padded shoulder straps. Side Protection Bags also have the size stitched on the front.

Other features of Ludwig Gig Bags include metal snap hooks and rings, as well as double stitched webbed handles with black rubber tubing comfort grips. The snare drum bags also include a handy detachable shoulder strap. All SPS bags are black.

Gig Bags	Gig Bags "SPS"	Description
LXC1G	LXCSP	Gig Bag Cymbal 22"
LXC2G		Gig Bag Cymbal 22" w/ Stick Bag
LXS3G		Gig Bags Drum Set - Fits 18x22", 16x16", 11x13", 10x12", 6.5x14"
LX510G	LX510SP	Gig Bag Snare 5x10"
LX512G	LX512SP	Gig Bag Snare 5x12"
LX613G	LX613SP	Gig Bag Snare 6.5x13"
	LX514SP	Gig Bag Snare 5.5x14"
LX614G	LX614SP	Gig Bag Snare 6.5x14"
LX814G	LX814XP	Gig Bag Snare 8x14"
LX08G		Gig Bag Tom 8x8"
LX10G		Gig Bag Tom 9x10"
	LX10SP	Gig Bag Tom 10x10"
LX12G	LX12SP	Gig Bag Tom 10x12"
LX13G	LX13SP	Gig Bag Tom 11x13"
LX14G	LX14SP	Gig Bag Tom 14x14"
LX15G	LX15SP	Gig Bag Tom 13x15"
LX16G	LX16SP	Gig Bag Tom 16x16"
LX18G		Gig Bag Tom 16x18"
	LX18SP	Gig Bag Tom 18x18"
LX20G		Gig Bag Tom 18x20"
LX18BG		Gig Bag Bass 18x18"
	LX20SP	Gig Bag Bass 18x20"
LX22G	LX22SP	Gig Bag Bass 18x22"
LX24G	LX24SP	Gig Bag Bass 18x24"
LX25G	LX25SP	Gig Bag Hardware 36"
LX29G	LX27SP	Gig Bag Double Pedal
	LX31SP	Gig Bag Bongo 9x7"
LX30G		Gig Bag Drum Sticks, Economy
LX31G		Gig Bag Drum Sticks, Premium





John Fred Young
Black Stone Cherry



Kyle Peek
David Cook



Alex Rodriguez
Saosin



David Goodstein
Josh Kelly
Ryan Cabrera



Brad Morgan
The Drive-By Truckers



Joey Cassata
ZO2



Brian St. Clair
Local H



Jonny Basofin
The Changes



Chad Kinner
Jon McLaughlin



Patrick Wilson
Weezer



Michael D'Amico
Brian Wilson



Cary LaScala
The Frail/Bellavista



Fab Moretti
The Strokes



Steve Fidyk



Jason Boesel
Rilo Kiley



Scott Churilla
The Supersuckers



Clive Deamer
Robert Plant



Daxx Nielsen
Brandi Carlisle



Scott Reeder
Fu Man Chu



Steve Riley
LA Guns



Dusty Watson
Agent Orange



Kurt Dahle
The New Pornographers



Fred Eltringham
The Wallflowers



Randy Lane
Pat Travers



Jason Sutter
Chris Cornell



Jeff Freidl
Ashes Divide



Paul Simmons
Reverend Horton Heat



Ron Gannaway
Gretchen Wilson



Steve Misamore
Dierks Bentley



John Cowill
The Beach Boys



Pat Petrillo



John Spittle
Trace Adkins



Tony Snow
Dramarama



Jess Margera
CKY



Rob Jensen
The Sleepwalkers
The Dan Smart Field Auxillary



David Parks
LoCash Cowboys



Ben Sesar
Brad Paisley



Anthony Buruclich
The Bravery



Chris Deaner
Independent
Kelly Clarkson



Alicia Warrington
Independent
Tracy Chapman



Mario Calire
Ozomatli



Ralph Castelli
RAIN



Sam Fogarino
Interpol



Tony Hammons
Montgomery Gentry



Al Wilson
Taylor Swift



JJ Johnson
John Mayer



Jon "Bermuda" Schwartz
"Weird Al" Yankovic



Ned Brower
Rooney



Dustin Hengst
Damone



Franklin Vanderbilt
Lenny Kravitz



Ryan Hoyle
Collective Soul



Carl Palmer
Asia/ELP



Matt Sorum
Velvet Revolver



Alan White
Yes



Steve Gorman
The Black Crowes



Patrick Keeler
The Raconteurs



Tre Cool
Green Day



Bobby Rondinelli
Over The Rainbow



Corey Miller



Butch Miles



Ringo Starr



Jason Bonham
Led Zeppelin



Bun E. Carlos
Cheap Trick
Tinted Windows



Alex Van Halen
Van Halen



Ed Shaughnessy



Jason McGerr
Death Cab For Cutie



Clayton Cameron



Frankie Banali
Quiet Riot



Bryan Hitt
REO Speedwagon



Jim Riley
Rascal Flatts



BE A LEGEND. JOIN THE FAMILY.